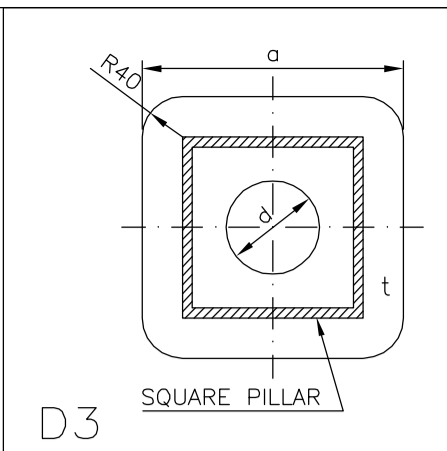


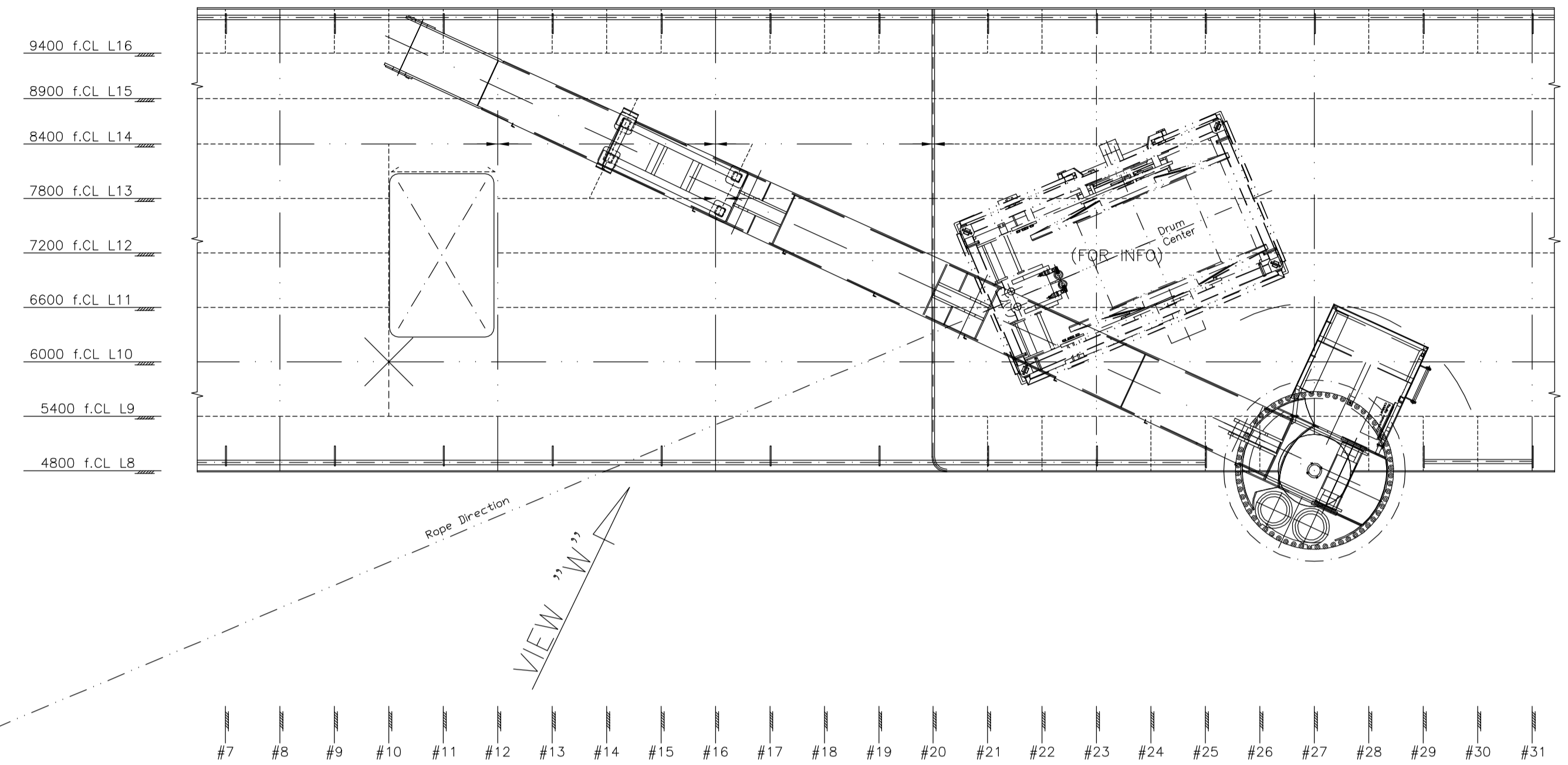
Square Pillar	t	a	d
80x8	12	160	-
100x8	12	180	-
100x10	14	180	-
120x8	12	200	40
120x10	14	200	40
140x8	12	220	60
140x10	14	220	60
150x10	14	230	70
160x10	14	240	80
180x10	14	260	90
180x12.5	20	260	90
200x12.5	20	280	100



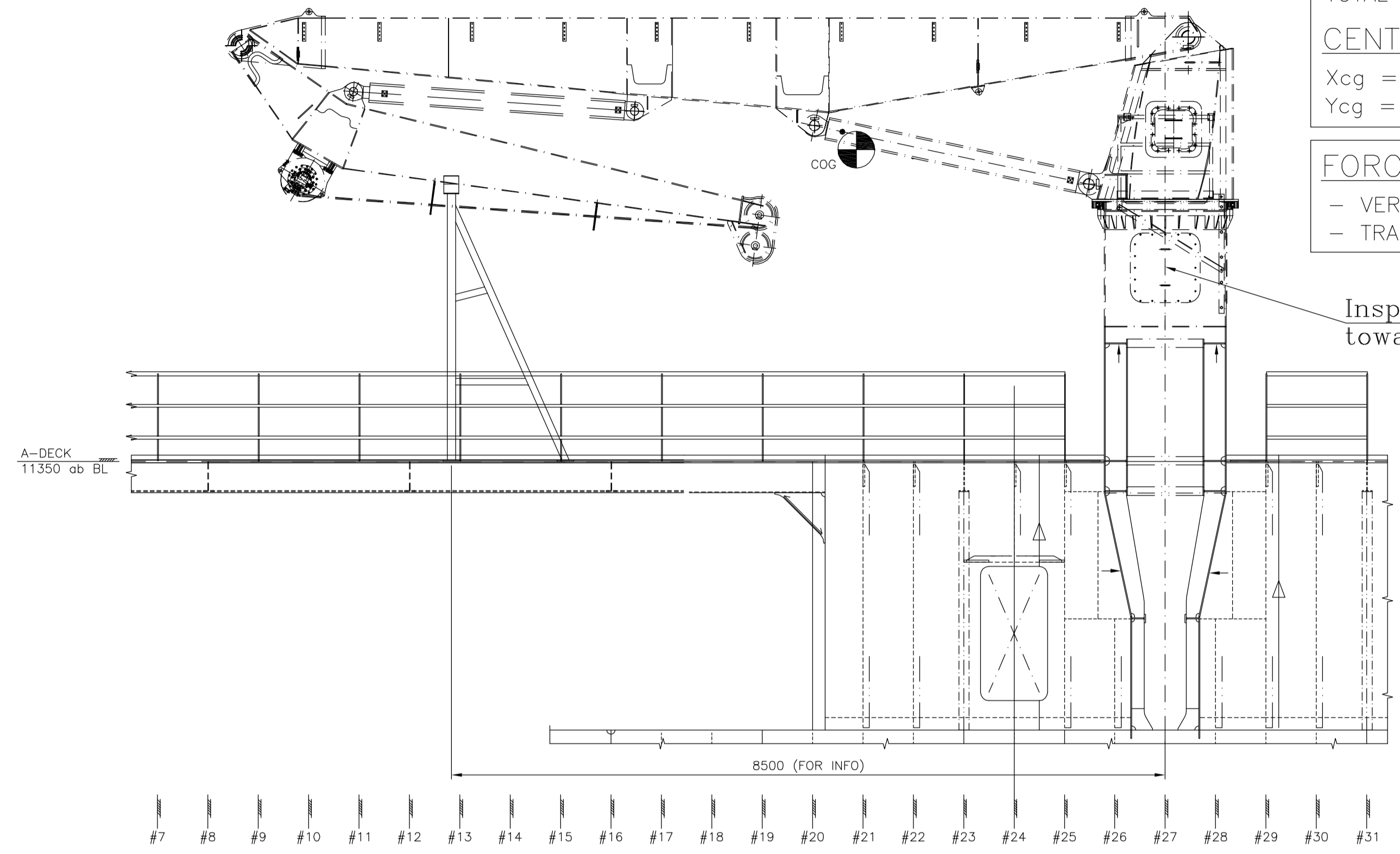
TOTAL WEIGHT OF CRANE APPROX. 13t
 CENTRE OF GRAVITY:
 $X_{cg} = 3679 \text{ mm}$
 $Y_{cg} = 2113 \text{ mm}$

FORCES ACTING ON CRADLE:
 - VERTICAL: $F_v = 73 \text{ kN}$
 - TRANSVERSE: $F_t = 83 \text{ kN}$

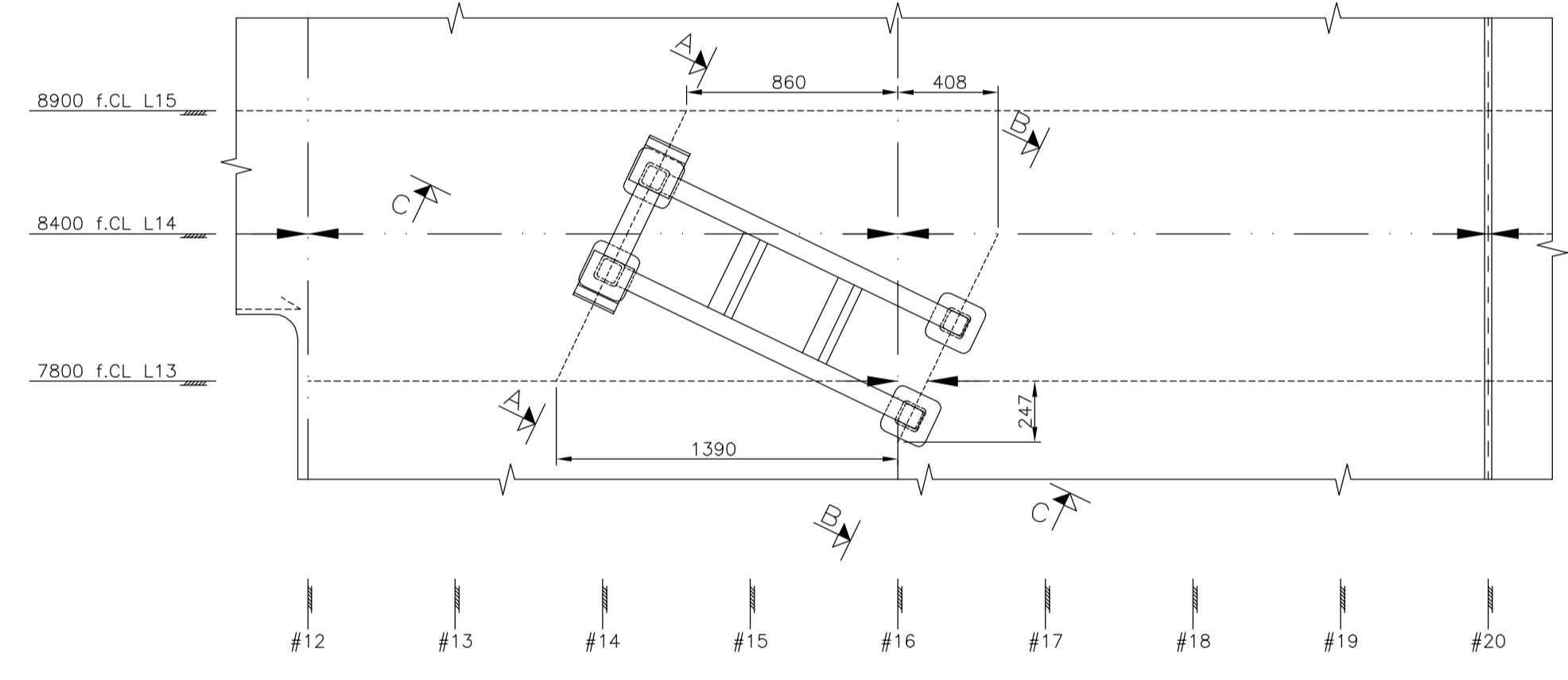
Inspection hatch
 towards outboard



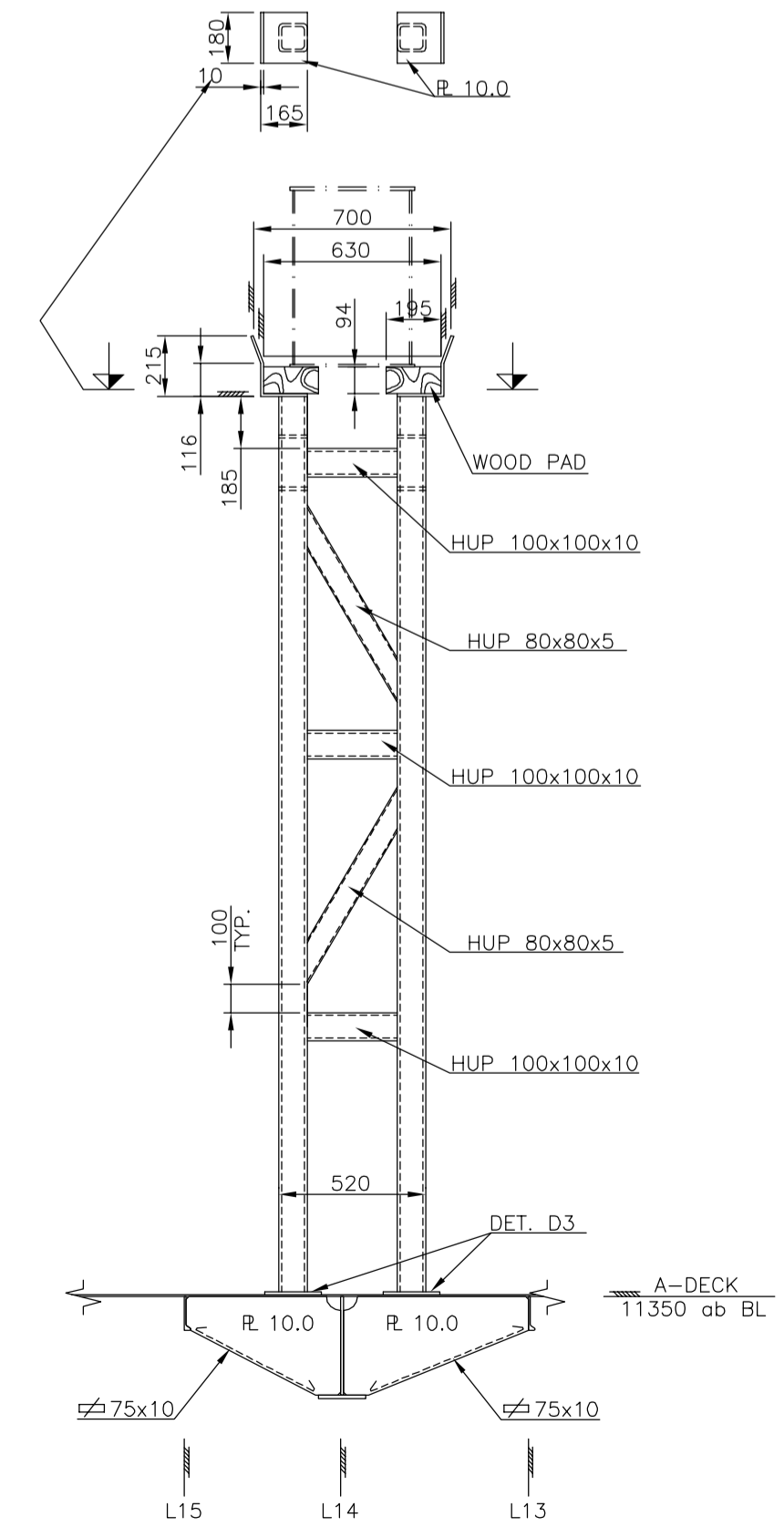
VIEW ON A-DECK 11350 ab. BL PS



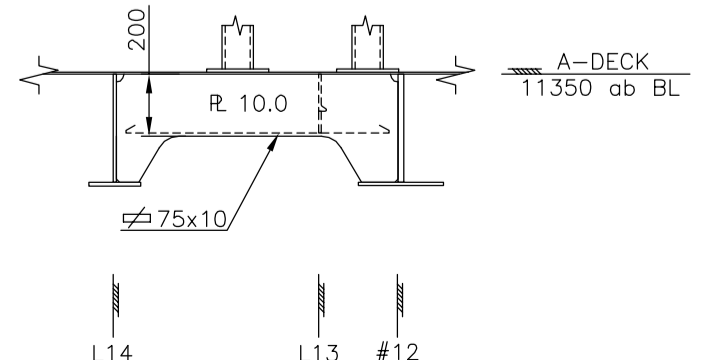
VIEW "W"



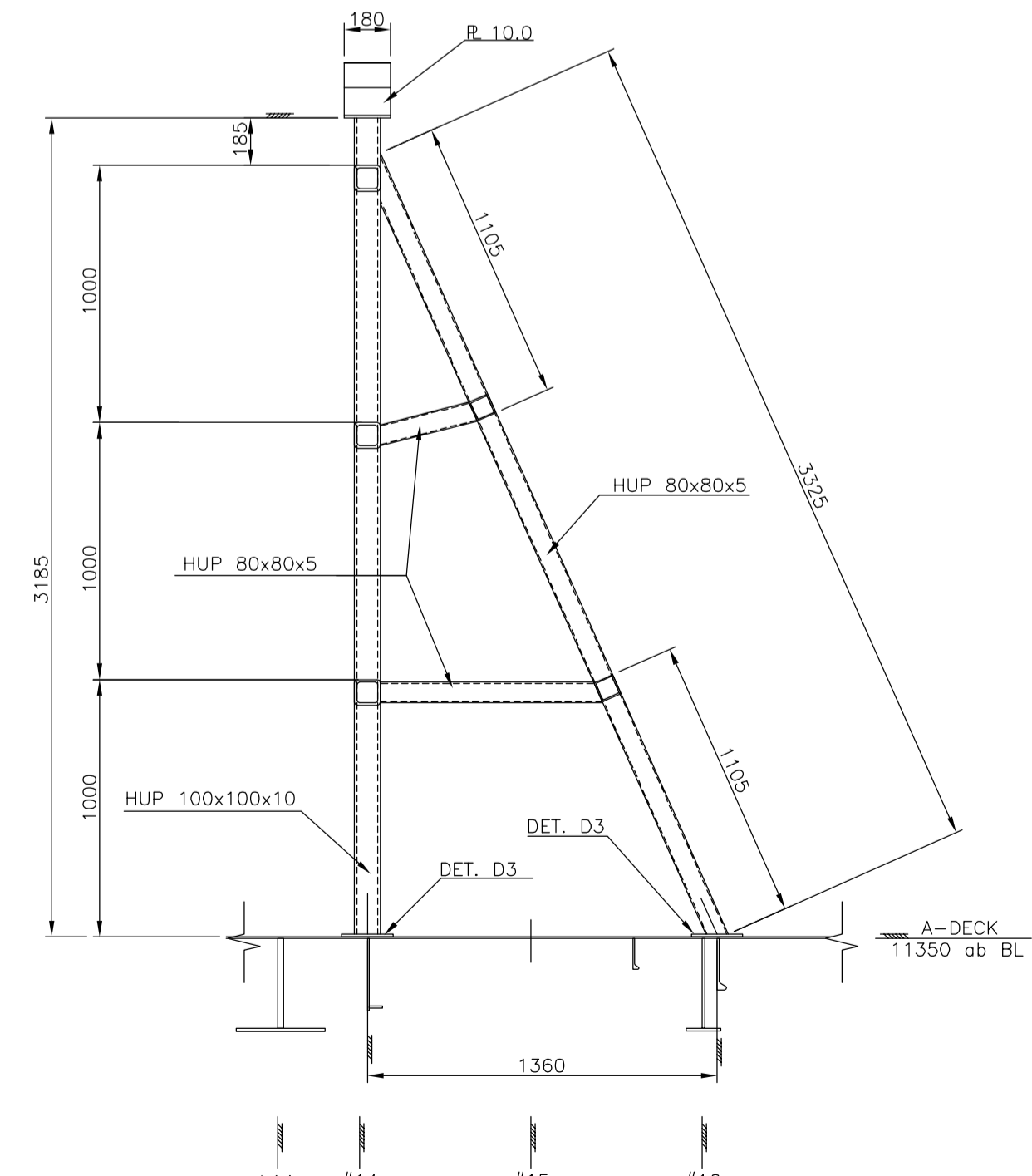
A-DECK 11350 ab. BL PS
 TRANSV.GIRDERS W350x8/FL120x10 (FOR INFO)
 LONG.GIRDERS W350x10/FL150x12(FOR INFO)
 LONGITUDINALS HP120x6 (FOR INFO)
 SCALE 1:25



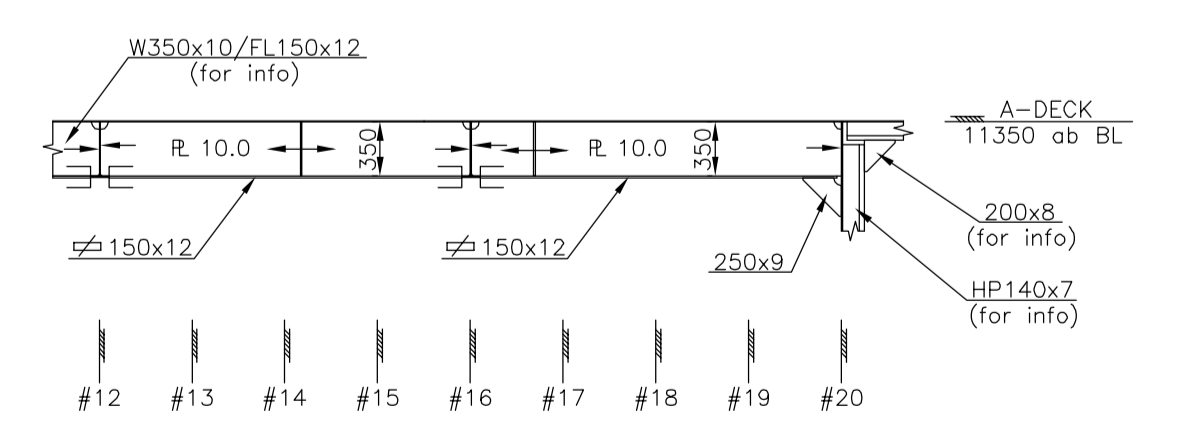
SECTION A-A
 SCALE 1:25



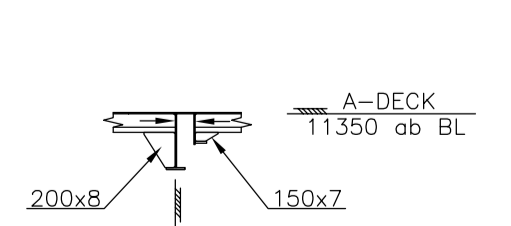
SECTION B-B
 SCALE 1:25



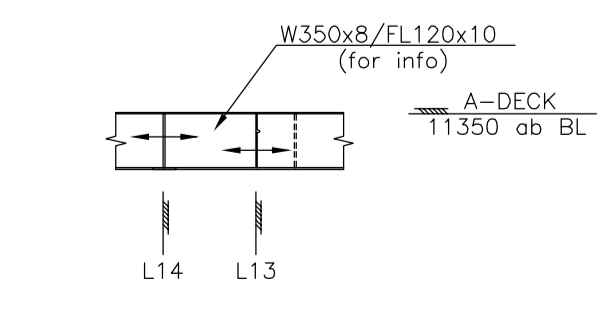
SECTION C-C
 SCALE 1:25



SECTION 8400 OFF CL PS



SECTION 7800 OFF CL PS



SECTION #16

WELDING:
 -DOUBLE CONTINUOUS FILLET WELDS ACC. TABLE BELOW (U.N.O.):

PLATE THICKNESS (mm)	WELD (throat th.)
t < 10	3.5
10 ≤ t ≤ 12	4.5
12 < t ≤ 15	5.5
15 < t ≤ 20	8.0
t > 20	10.0

NOTE:
 1. FRAME SPACING : 600 mm.
 2. MATERIAL: NV-A - U.N.O.

REFERENCE DRAWINGS:
 4239-103-002 ARRANGEMENT ON A-DECK
 4239-207-001 PROFILE & PLANS
 4239-533-001 RAILING AND STANCHIONS ARR. DETAILS
 4239-263-007 FOUNDATION CRANE A-DECK #27
 "MACGREGOR" DWG. C.1610.188.GA (REV.1)
 - HMC 1610 LK 50-17(MR9) - GENERAL ARRANGEMENT

Yard no: 156

13.08.14 PL	Approved Class/Date	Approved Owner/Date	Appr. Authorities/Date	Approved/Date	Approved/Date	Checked V&S/Date
17.10.12 JM						
AS-BUILT	TEBMA SHIPYARDS LTD THIRD FLOOR, K-ALEELI CENTRE, 145 MONTHEIM ROAD, CHENNAI-600 008.					SCALE 1:50
Owner comment updated	GEOTECH. RESEARCH VESSEL VS482 GTRV					DATE 20.12.2010.
Description	FOUNDATION CRANE CRADLE A-DECK #15					SFI 263
ARCHIVE	WÄRTSILÄ					FORMAT A1 READY FOR NC/SO
REPLACE	Wärtsilä Ship Design 6419 FITJAR, NORWAY TEL +47 53 45 70 00 FAX +47 53 45 70 01 shipdesign.norway@wartsila.com					REV. B
REPLACE	4239-263-018.dwg					DRAWING NO. 263-018
REPLACE	INFO					SHEET 1/1