

2013 / MAN R6-800

SPECIFICATION



Model: MAN-D2876LE423

Year: 2013

Config./Cyl.:R6-800

Disp.per.Cyl.l: 2,1

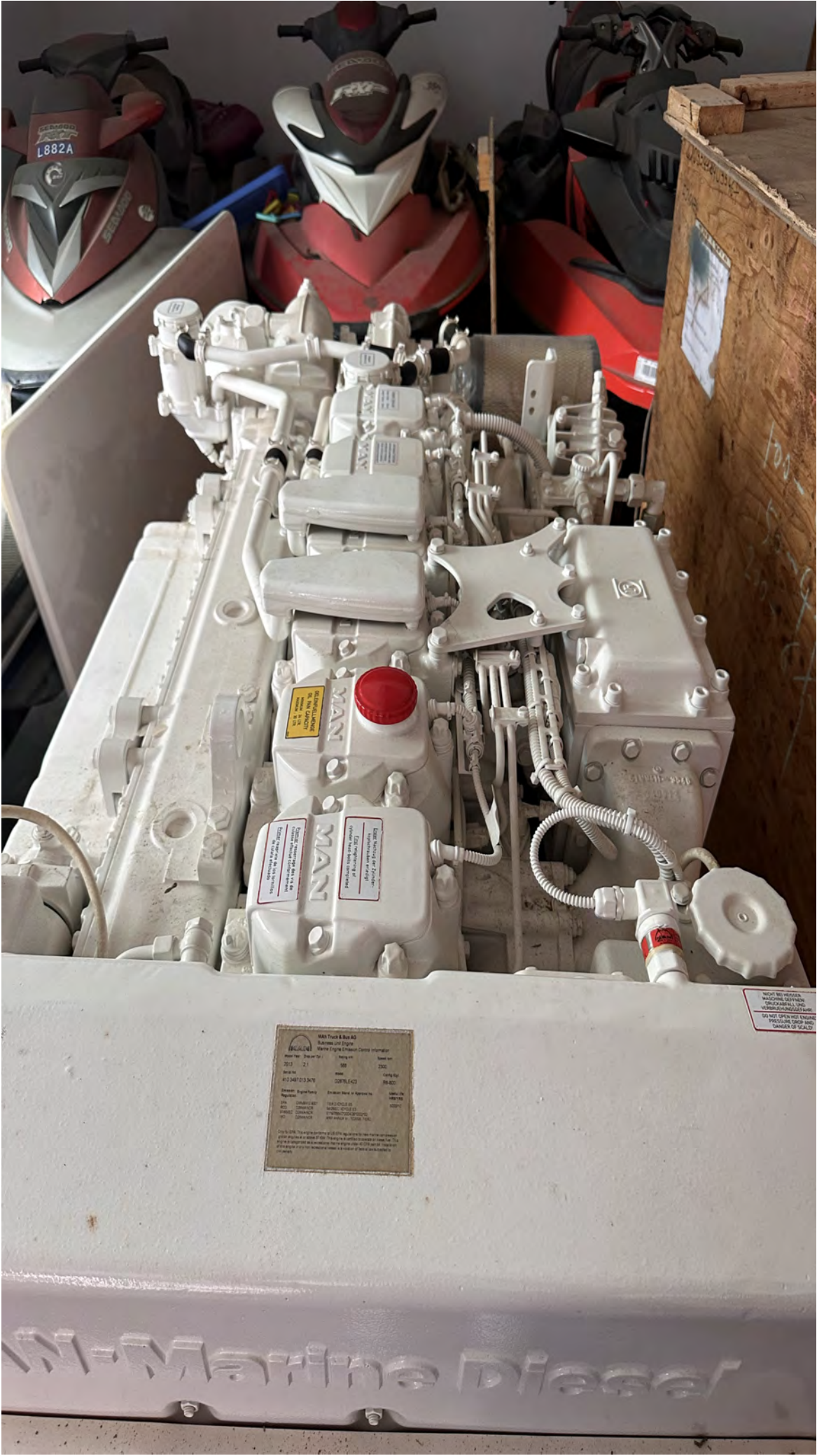
Quantity: 6

Useful life(HRS/YRS): 5000/10

Speed rpm: 2300

Rating kw: 588

Serial No: 410 3497 013 3476



MAN Truck & Bus AG
Business Unit Engine
Marine Engine Division Contact information
Model No. 2100 21 160 2000
Serial No. 21 160 2000
410 2487 210 2478 CONTACT 86-800

Engine	Original Power	Division Head or Approved by	MAN Diesel
MAN	2100 21 160 2000	MAN Diesel	86-800
MAN	2100 21 160 2000	MAN Diesel	86-800
MAN	2100 21 160 2000	MAN Diesel	86-800

Do not open the engine cover until the engine has cooled down. The engine cover is hot and can cause serious burns. The engine cover is hot and can cause serious burns. The engine cover is hot and can cause serious burns.

DO NOT REMOVE
THIS LABEL
DO NOT OPEN THE ENGINE
COVER UNTIL THE
ENGINE HAS COOLED DOWN
TO PREVENT BURNS
OR INJURY TO THE
SKIN OR EYES.

MAN-Marine Diesel

GALLERY





GALLERY



GALLERY



GALLERY





MAN Truck & Bus AG
Business Unit Engine
Marine Engine Emission Control Information

Model-Year	Disp.per Cyl. l	Rating kW	Speed rpm
2013	2,1	588	2300

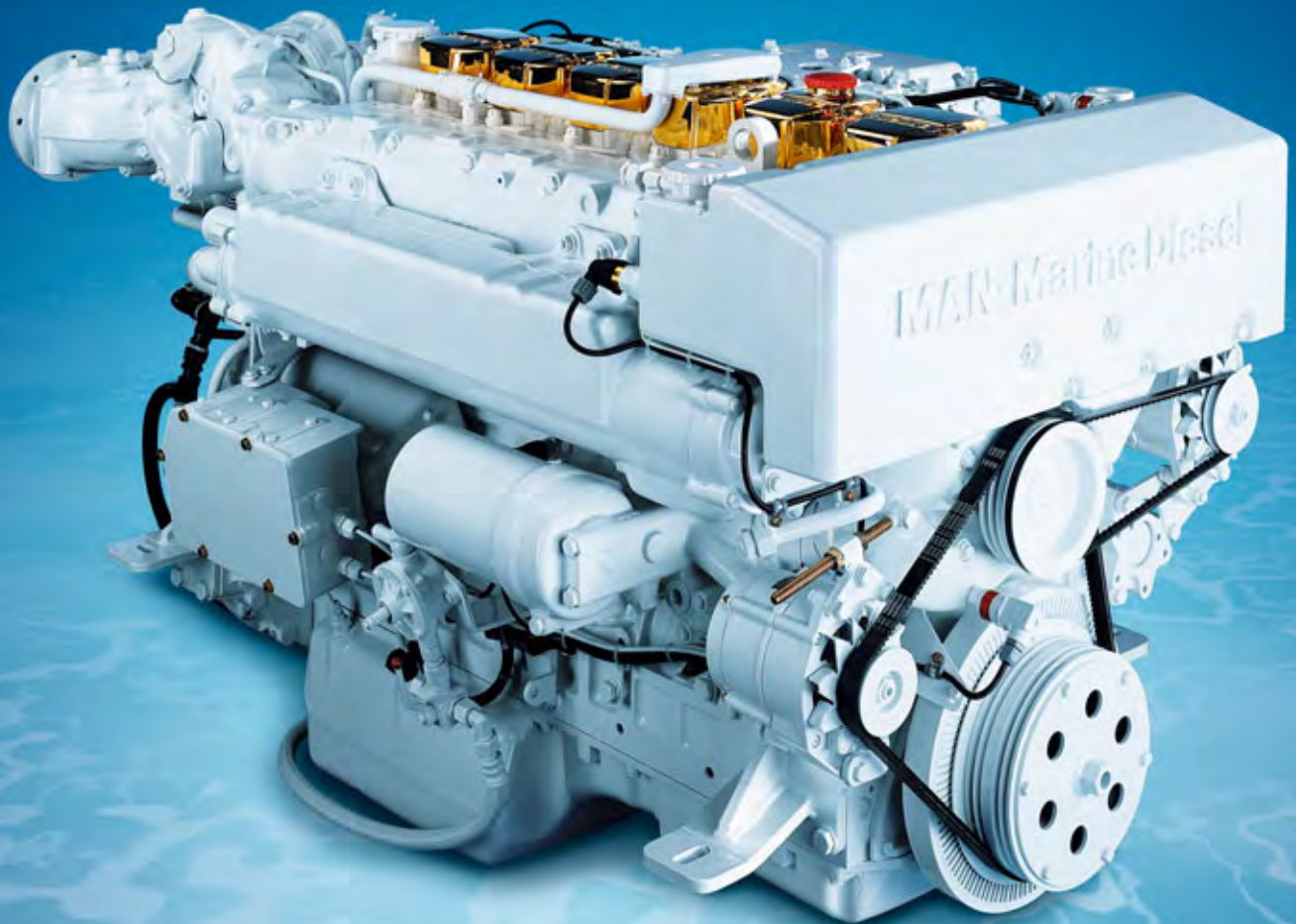
Serial No	Model	Config./Cyl.
410 3497 013 3476	D2876LE423	R6-800

Emission Regulation	Engine Family	Emission Stand. or Approval no.	Useful life HRS/YRS
EPA	DMNBN12 8001	TIER 2 /CYCLE E5	5000/10
RCD	D28MAINCR	94/25/EC /CYCLE E3	
97/68/EC	D28MAINCR	E1*97/68VC*2004/26*0003*02	
IMO	D28MAINCR	MRP ANNEX VI - TC2008 -TIER2	

Only for EPA: This engine conforms to US EPA regulations for new marine compression ignition engines at or above 37 KW. This engine is certified to operate on diesel fuel. This engine is categorized as a recreational marine engine under 40 CFR part 94. Installation of this engine in any non recreational vessel is a violation of federal law subjected to civil penalty.

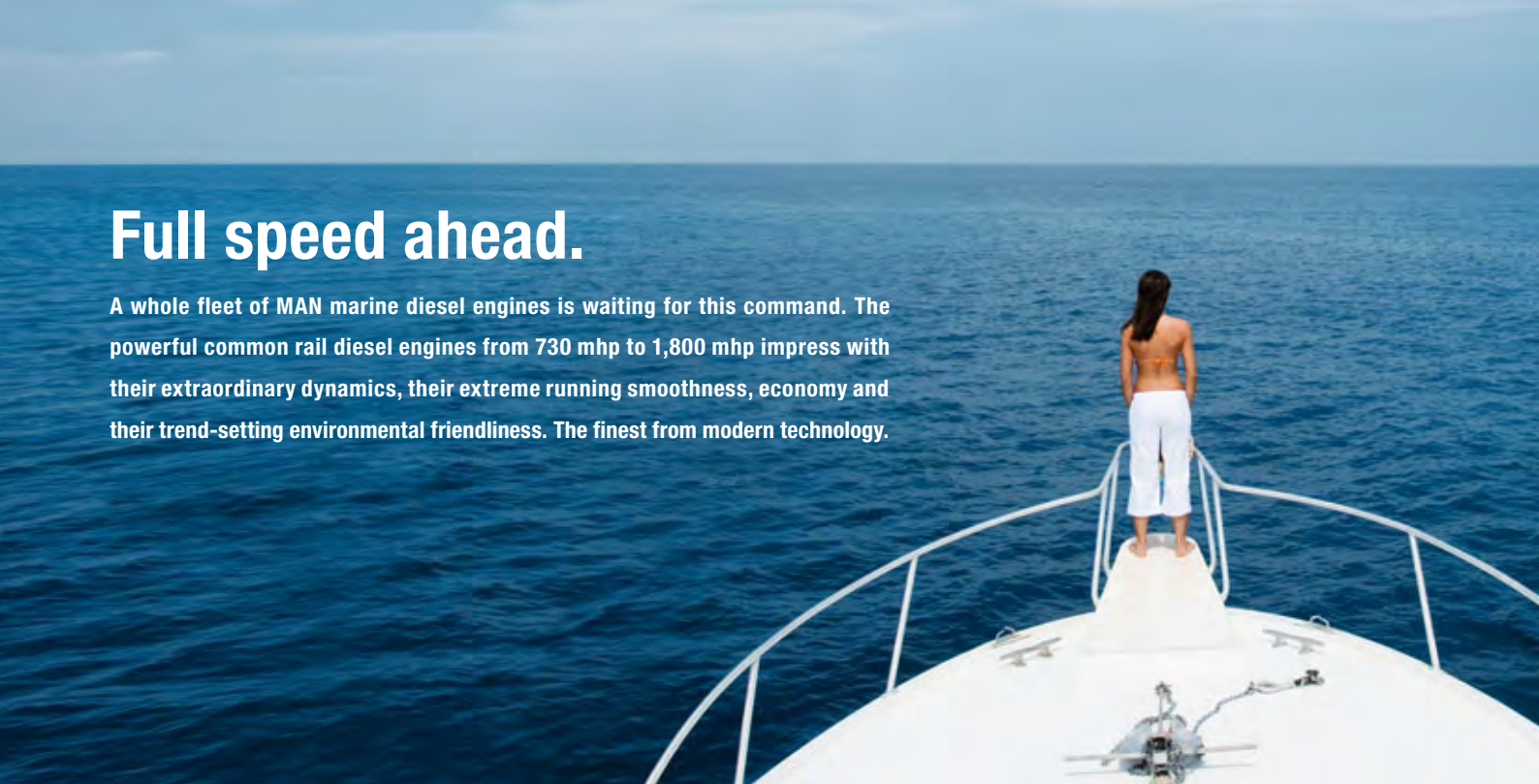
R6-800

MAN high speed marine diesel engines
for light duty applications.



Full speed ahead.

A whole fleet of MAN marine diesel engines is waiting for this command. The powerful common rail diesel engines from 730 mhp to 1,800 mhp impress with their extraordinary dynamics, their extreme running smoothness, economy and their trend-setting environmental friendliness. The finest from modern technology.



Engine description R6-800.

Characteristics

Cylinders and arrangement	6 cylinders in-line
Operation mode	4-stroke diesel engine watercooled exhaust turbocharger with intercooler
Number of valves	4 valves per cylinder
Fuel system	Common Rail direct fuel injection with electronic control
Engine lubrication	Closed system with forced feeding, oil cooling and filtering
Type of cooling	Heat exchanger with engine and seawater circuit
Engine electric	Electronic injection control Electronic engine monitoring including diagnostic unit
Exhaust gas status	IMO/MARPOL 73/78, EPA Tier 2 (only for private use), SAV, Recreational Craft Directive 94/25/EC
Fuel	DIN EN 590

Dimensions

A-Overall width of engine	mm	882
B-Overall length of engine	mm	1,605
C-Overall height of engine	mm	977
D-Top of engine to crankshaft centre	mm	655
E-Length of engine from front end to edge of flywheel housing	mm	1,320

For detailed examinations of installation dimensions, please order drawings from our factory.

MAN engines have outstanding qualities

- High tractive power even at low speeds
- Powerful acceleration and rapid reaction to commands
- High performance combined with low weight
- Compact, space-saving design
- Large operation range owing to low consumption
- Low running costs and long service life
- Low emission values
- World-wide service network with rapid supply of spare parts

Technical data

Type of engine		R6-800
Displacement	l	12.82
Maximum output to DIN ISO 3046-1 ¹	kW (mhp)	588 (800)
Rated speed	rpm	2,300
Maximum torque	Nm	2,700
at speed	rpm	1,200 - 2,100
Weight (dry)	kg	1,305
Fuel consumption at rated power	l/h	158

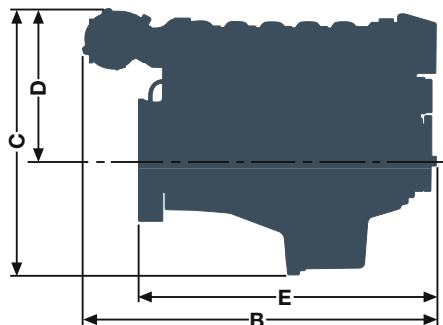
¹ The ratings are only for operation of private yachts.

Definition of light duty operation

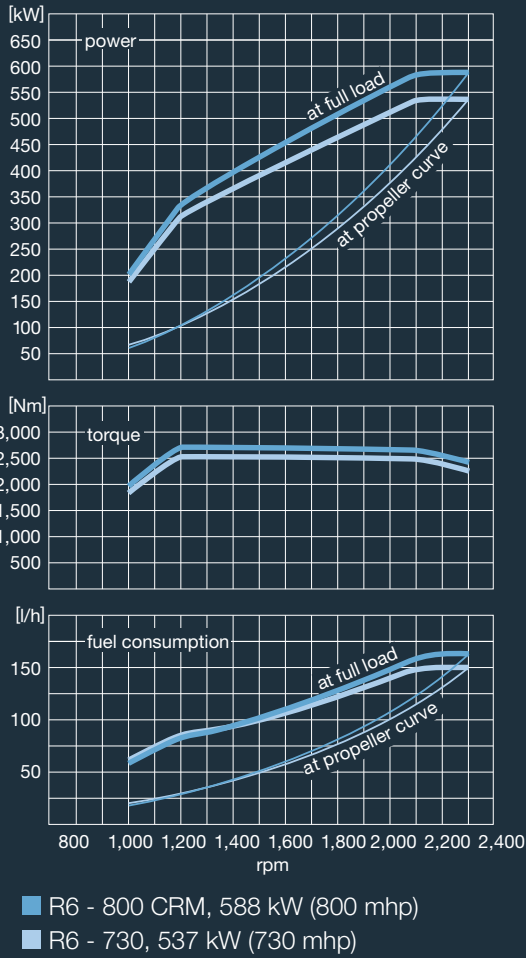
Annual operating hours	< 1,000
Percentage of time at full load	≤ 20%
Average load application	≤ 50%
Particular operation conditions	no wide-open throttle below rated speed

Typical applications

- Escort boats and patrol boats
- Ambulance boats
- Pleasure crafts
- Police boats



Power charts.



MAN Diesel SE

Vogelweiherstrasse 33
 90441 Nuremberg, Germany
 Phone +49 911 420-0
highspeed@mandiesel.com
www.mandiesel.com