





CHARGING AIR



STARTING AIR



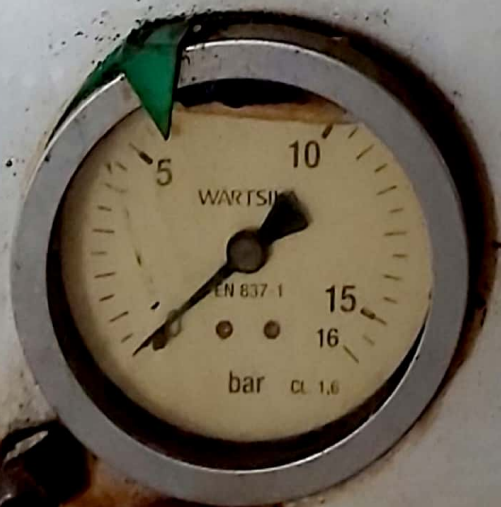
LT - WATER



1 bar = 0,1 MPa  $\approx$  1 kp/cm<sup>2</sup>



HT - WATER



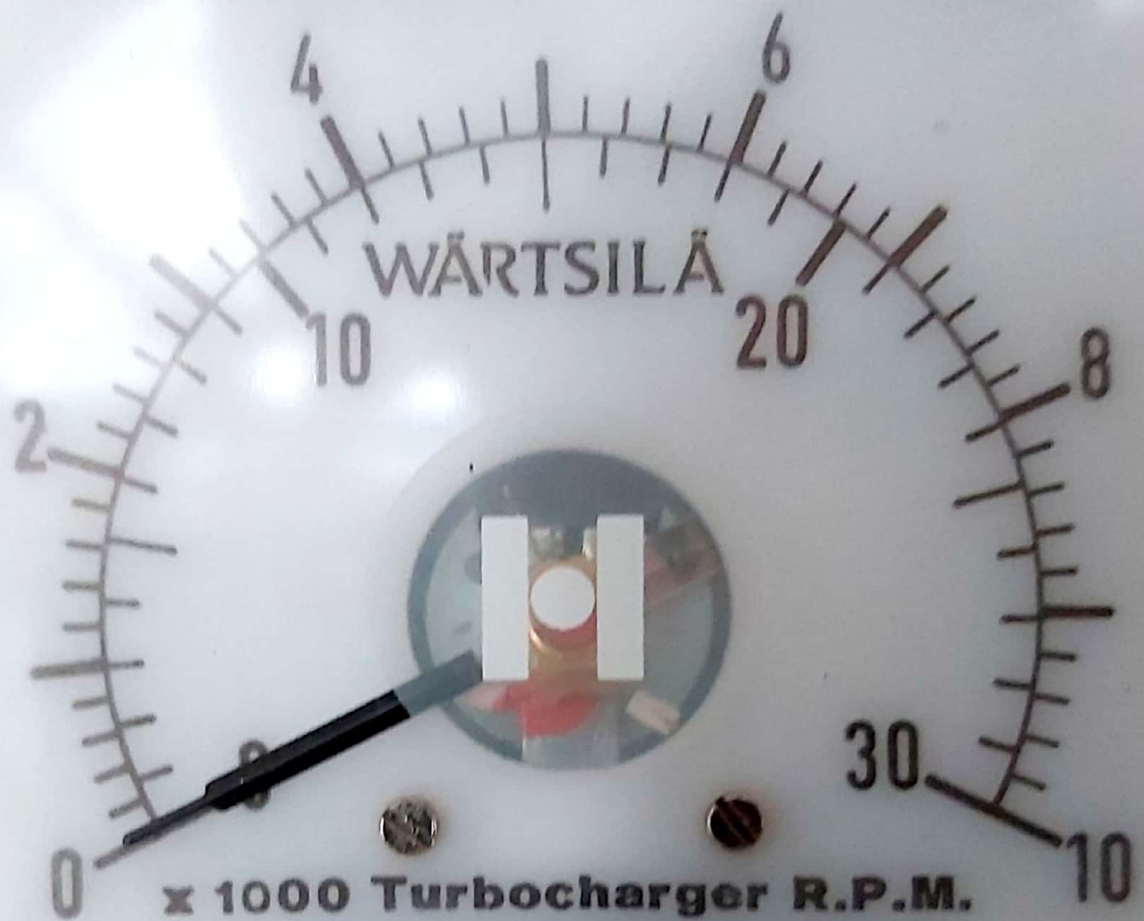
LUBRICATING OIL



x 1000 Turbocharger R.P.M.  
x 100 Engine R.P.M.

0018820 h

WÄRTSILÄ



x 1000 Turbocharger R.P.M.  
x 100 Engine R.P.M.

0018820 h

WÄRTSILÄ



x 1000 Turbocharger R.P.M.

x 100 Engine R.P.M.

0018820 h

WÄRTSILÄ