



# Permian

INTERNATIONAL ENERGY SERVICES



# AUCTION

June 16<sup>th</sup> & 17<sup>th</sup>

2026

- **Tuesday:**
  - 9:00 AM (CST) - *Live Auction*
  - 12:00 PM (CST) - *Ring 2*
- **Wednesday:**
  - 9:00 AM (CST) - *Online Only*

**AUCTION TO BE HELD  
4006 SCR 1232 MIDLAND TX 79706**

Preview Available Starting  
June 8th



2013 NATIONAL NBT-40 TON CRANE  
MTD ON 2013 PETERBILT 367

Steve Taylor: (432) 448-0406 • Michael Hardwick: (432) 448-3208  
Kevin Johnson: (318) 230-1477 • Rick Russell: (940) 841-3428



**(1 OF 3) 2012 MUSTANG 550 DD**  
**104-275K 5-AXLE WS RIGS**



**(3) KW BOBTAIL & FLATBED**  
**CHEMICAL TREATER TRUCKS**



**2018 Peterbilt NBT-40 Crane Truck**



**2013 National NBT-40 Crane Truck**



**NATIONAL 800D 23-TON ON 2012-13 WESTERN STARS**



**2017 PETERBILT NOV WIRELINE TRUCK**



**(12) 2018-2023 FORD & CHEVY 2500**  
**4X4 PICKUPS**



**Eagle 550 WS Rig, (2022 CAT IV,**  
**Fully Tooled & Field Ready**

# Yard # 1 - Midland TX



(2 OF 5) CAT EXCAVATORS



2021-2022 CAT 336D2 EXCAVATORS 1,700 HRS!



JCB 300T SKID STEER, 600 HRS.



JOHN DEERE 331G, 80 HRS!!



2011 RELIABLE PUMPS RD300 10,000PSI HYDROSTATIC TEST TR



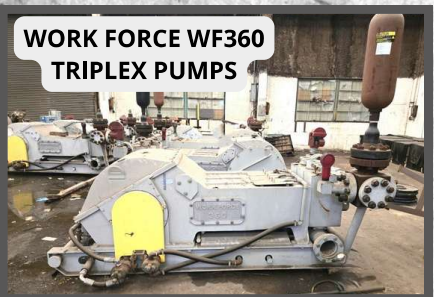
(MULTIPLE) 2015 HD 30K GVWR GOOSNECK TRAILERS



2019 RWN 600HP Water Transfer Pumps, 360 HRS!



NLB 10K WP HYDRO TEST UNIT ON 2019 LOAD TRAIL GOOSNECK



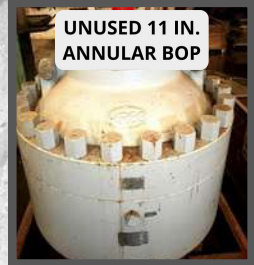
WORK FORCE WF360 TRIPLEX PUMPS



MCKISSICK 74-A 150-TON BLOCK WITH 2024 Cert.



(2) MCKISSICK 100-TON BLOCKS WITH 2026 Cert.



UNUSED 11 IN. ANNULAR BOP



96' X 250K LB. MAST WITH CAT IV



MCKISSICK 73-A 150-TON BLOCK REBUILT WITH PAPERWORK

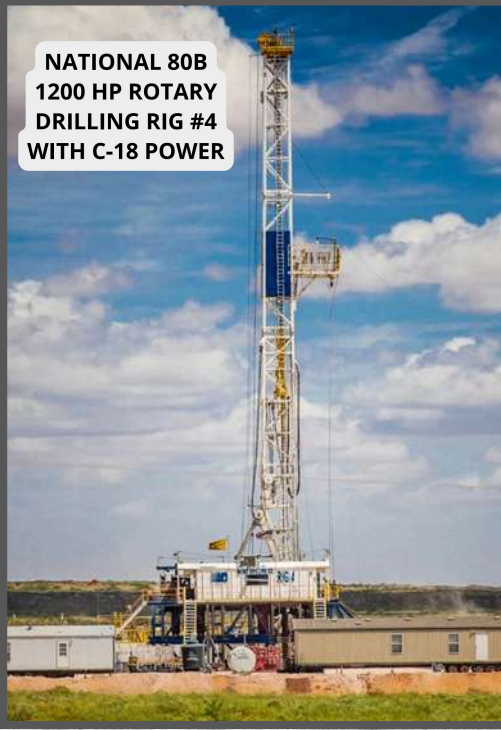


Kenworth T800 Haul Trucks

# Yard # 2 - Hobbs, NM

Michael Hardwick  
432-448-3208

**NATIONAL 80B  
1200 HP ROTARY  
DRILLING RIG #4  
WITH C-18 POWER**



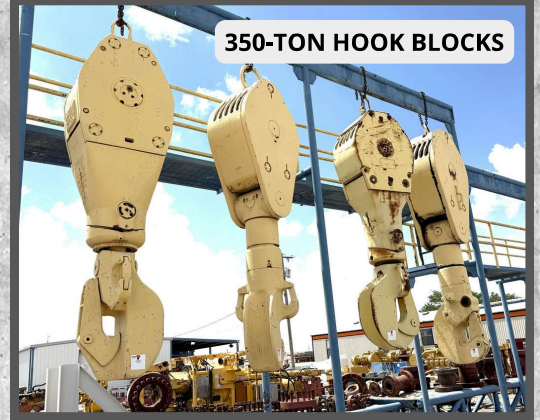
**OWI 1500 HP  
DIESEL ELEC. Partial  
Drilling Rig Pckg.  
Rig #1**



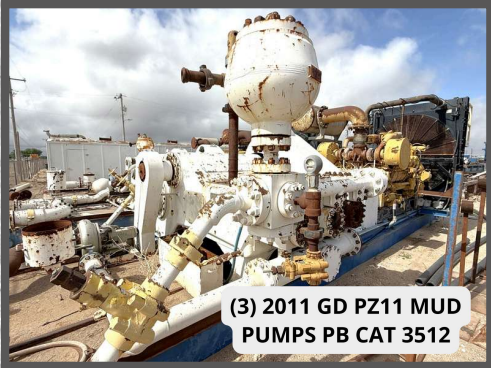
**BRIDGES 1000 HP  
ROTARY DRILLING  
RIG #6 WITH C-18  
POWER**



**350-TON HOOK BLOCKS**



**(3) 2011 GD PZ11 MUD  
PUMPS PB CAT 3512**



**CAMERON, HYDRIL, &  
TOWNSEND 11IN-13.58IN  
ANNULAR & DBL BOP'S**



**(2) CAT 455-KW GEN HOUSE  
PB CAT C15 530-HP**



**2014 Veristic Rig  
Walker System**



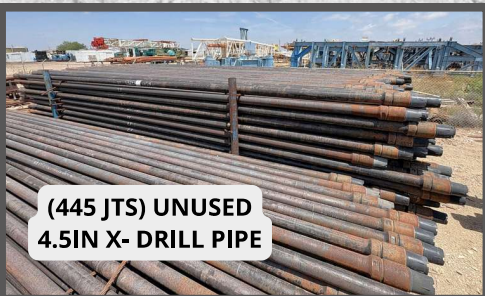
**2014 INTEGRATED  
DRIVE SYSTEMS 4X3  
SCR HOUSE**



**(5) CAT 3512 MUD PUMP ENGINES**



**(445 JTS) UNUSED  
4.5IN X- DRILL PIPE**



**4.5IN G-105 16.60#  
R2 Drill Pipe**



**(478 JTS) 5IN G-105  
DRILL PIPE**





**(1 OF 2) CANRIG 1050E-500 500-TON 6-58" REG 5K WP TOP DRIVE ASSEMBLY**



**2008 VARCO 500-TON TOP DRIVE SKIDDED**



**(2) TESCO 500-TON ECO 900-HP TOP DRIVE ASSEMBLIES**

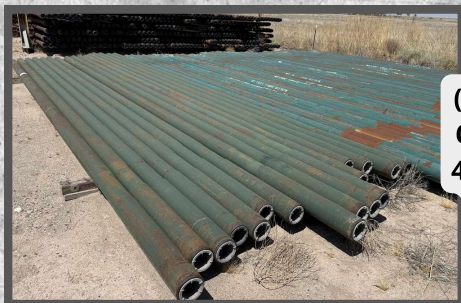
**(1 OF 2) TESCO 250-TON EMI 400-HP TOP DRIVE (RECERT OCT. 2014)**



**CATERPILLAR C32 ACERT 1200-HP HYDRAULIC POWER UNIT F/ CANRIG TOP DRIVE SKIDDED**



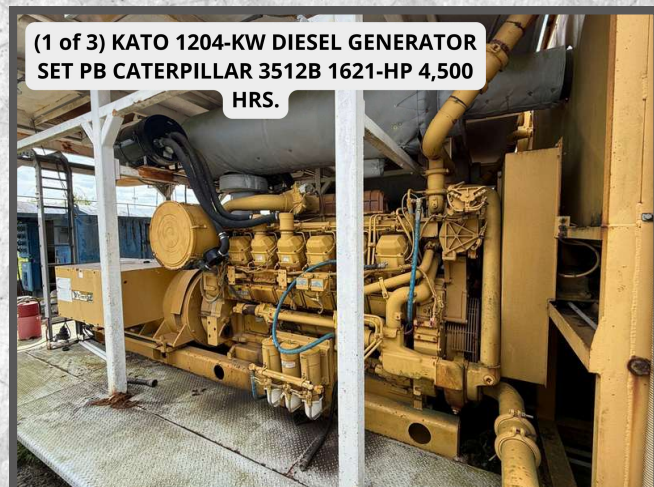
**(40) (UNUSED) 6.5 IN. OD X 31 FT. 4 IN. IF & 4.5 IN. XH CONNS, w/ Slip Recess, DRILL COLLARS**



**Yard # 12 - Port Allen, LA**



**NATIONAL 110-UE DRILLING DRAWWORKS**



**(1 of 3) KATO 1204-KW DIESEL GENERATOR SET PB CATERPILLAR 3512B 1621-HP 4,500 HRS.**

**Yard # 16 - Odessa, Tx**

**Michael Hardwick 432-448-3208**

**Walker Neer Apache 500HP Drilling Rig Pckg. With Venturetech XK-250 Top Drive**



**Venturtech HPU & Rig Components**



**(2) Tesco EMI-250 Ton Top Drives**



**Yard # 10 - Odessa, Tx**

**Kevin Johnson 318-230-1477**

**(1 of 2) CONTINENTAL EMSCO FB-1600 5K WP TRIPLEX MUD PUMP W AC ELECTRIC MOTOR**



**2009 TSC WF700 5K WP TRIPLEX PUMP**

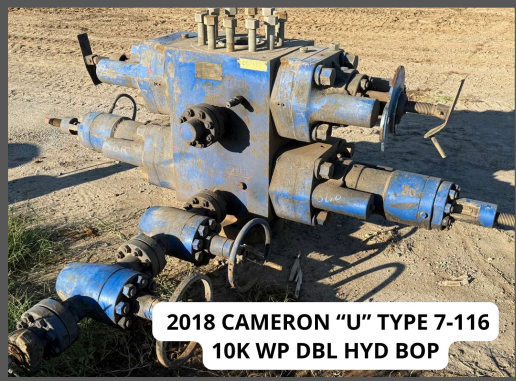


**2013 NOV BRANDT 120X67X66 SHALE SHAKER**



**KAISER M52A2 5-TON 6X6 TRUCK TRACTOR**





2018 CAMERON "U" TYPE 7-116  
10K WP DBL HYD BOP



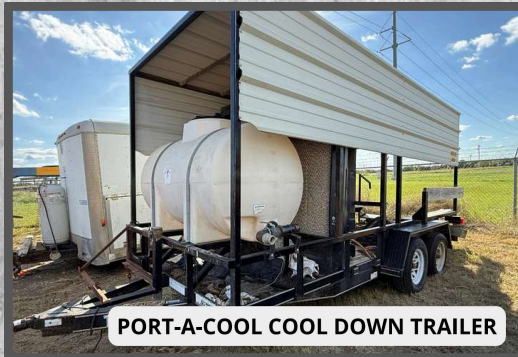
2008 MCKISSICK 84-A 30" 150-TON  
WELL SERVICE BLOCK



2006 PARKER TRAILERS  
DOGHOUSE W A.C & HEAT



190-BBL 2-COMP REVERSE PIT W  
GAS BUSTER & IRON RACK



PORT-A-COOL COOL DOWN TRAILER



1993 MACK RD690S  
MACK E7-300, 75-BBL  
VACUUM TRUCK



2011 KENWORTH T800  
CUMMINS ISX 80-BBL  
VACUUM TRUCK



CATERPILLAR C15 540-HP W  
ALLISON CLT5860 DB



FRANKS EXPLORER III 96'-215K  
WELL SERVICE RIG



2008 LOADCRAFT 550 DD 96'-225K  
WELL SERVICE RIG



10'-40' EXTENDABLE  
ALUMINUM RIG LADDERS

**Yard # 6 - Powell, WY**

**Kevin Johnson 318-230-1477**



**FRANKS EXPLORER III 1287160 DTD-HT  
96'-215K 4-AXLE WS RIG**



**1984 FRANKS  
MOBILRIG 300 1287160  
DTD-HT 96'-215K 4-  
AXLE WS RIG**



**2006 Haulmark 16' TA BP  
Dog House Trailer**



**2013 PIPE TRIPPER 40' HYD  
PIPE HANDLER**



**2015 Interstate 16' ta BP  
Doghouse Trailer**



**1980 FRANKS MOBILRIG 300 1287-160  
DD 96'-215K 4-AXLE WS RIG**



**1984 FRANKS MOBILRIG 300 1287-160  
DD 96'-215K 4-AXLE WS RIG**

**Yard # 8 - Williston, ND**

**Kevin Johnson 318-230-1477**



**THIBS 32' X 96" DUAL TA  
GOOSENECK TRAILER**



**2008 INTERSTATE CARGO 16' X  
84" TA BP DOGHOUSE TRAILER**



**(3) 14' ALUMINUM RIG LADDERS**

# Yard # 5 Gillette, WY

Kevin Johnson 318-230-1477

1984 CRANE CARRIER W5384A DD 108'-267K  
5-AXLE WS RIG



MCKISSICK 83-AWT 100 Ton  
Well Service Block

## Yard # 19 Ross, ND

Michael Hardwick  
432-448-3208

JWS 165 Pump



TEE Triplex Pump



## Yard # 17 Big Piney, WY

Michael Hardwick  
432-448-3208



2014 Watson Hopper Pay Zone 550 DD WS  
Rig, 108' x 300k Mast

Mainland WS ROD Rig  
71' x 150k Mast  
2025 Cat IV



## Yard # 14 - Artesia, NM

Michael Hardwick 432-448-3208



HOPPER HOIST GXXTA WS RIG,  
96 x 245K MAST, W TOOLS

(2) HOPPER HOIST GXXTA WS  
RIG, 96' MAST, W TOOLS



SKYTOP DD WS RIG W TOOLS

**Yard # 3 - Ft. Worth, TX**

**Michael Hardwick 432-448-3208**

**2008 Kenworth T800 1.5 Inch Coil Tubing Truck**



**2005 International Bobtail Bulk Cement Truck**



**2006 Kenworth T800 1.5 Inch Coil Tubing Truck**



**1999 Peterbilt 379 Slick Back Winch Truck**



**(2) NOV MT-1602 Frac Blenders, QSK 19 Engines**



**(2) NOV Hydration Units Low Hrs.**



**Yard # 11 - Artesia, NM Canary**

**Michael Hardwick 432-448-3208**

**(5) Crew Pickup Trucks**



**Yale 7k Forklift, Diesel**



**(2) 10k Water Jetting Trls.**



**2009 Ford F-450**



**Monorail Trailers**



# July 17<sup>th</sup> - Online Only

- **Canary Well Head Liquidation**

Yard # 9 - Odessa, TX  
Yard # 11 - Artesia, NM  
Yard # 1 - Midland, TX

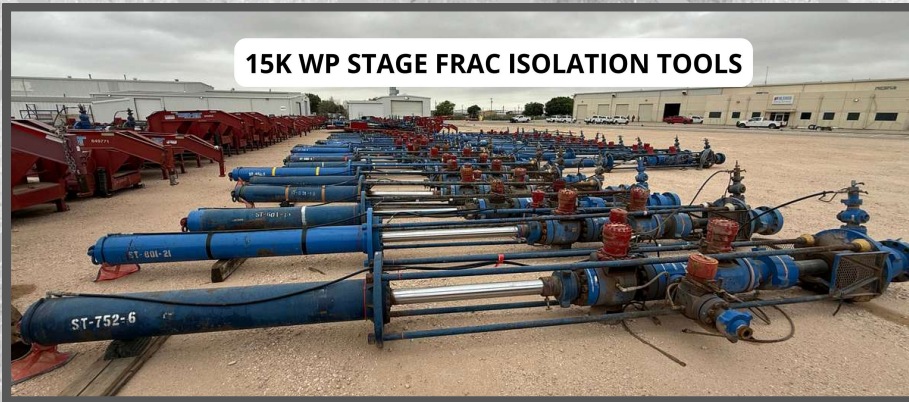
**Michael Hardwick**  
**432-448-3208**



7in 10k x 10ft Spools

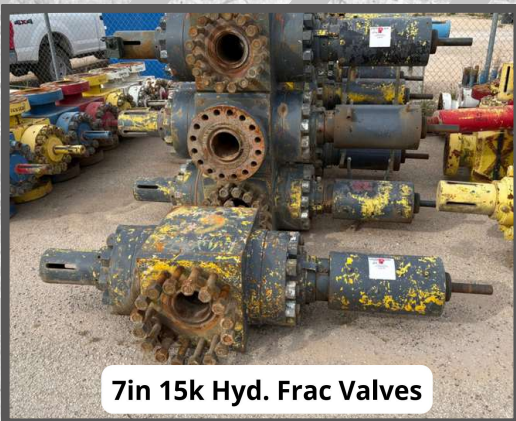


(15) Meyer's 3 & 4 Station Closing Units



15K WP STAGE FRAC ISOLATION TOOLS

- **Wireline Tools**
- **Rod Fishing Tools**
- **ESP Componentets**
- **New Surplus Parts**
- **Casing Elevators**



7in 15k Hyd. Frac Valves



7in 10k Frac Valves



7in 10k Frac Tree's



7in 10k Fluid Crosses with Gate Valves



BJ 250 - 500 Ton Slip Type Casing Elevators



Casing Heads



SEE YOU



**JUNE 16<sup>TH</sup> & 17<sup>TH</sup>**

**AT THE AUCTION!**



**Equipmentfacts**

[permianint.com](http://permianint.com)

**proxibid**

*Auctioneer: Rick Russell TX LIC: 11287*



SCAN TO VIEW INVENTORY  
PHOTOS, VIDEOS, & REGISTER  
FOR ONLINE BIDDING

[PERMIANINT.COM](http://permianint.com)

**NEXT AUCTION  
AUGUST 11<sup>TH</sup> 2026**