

1

2

3

4

5

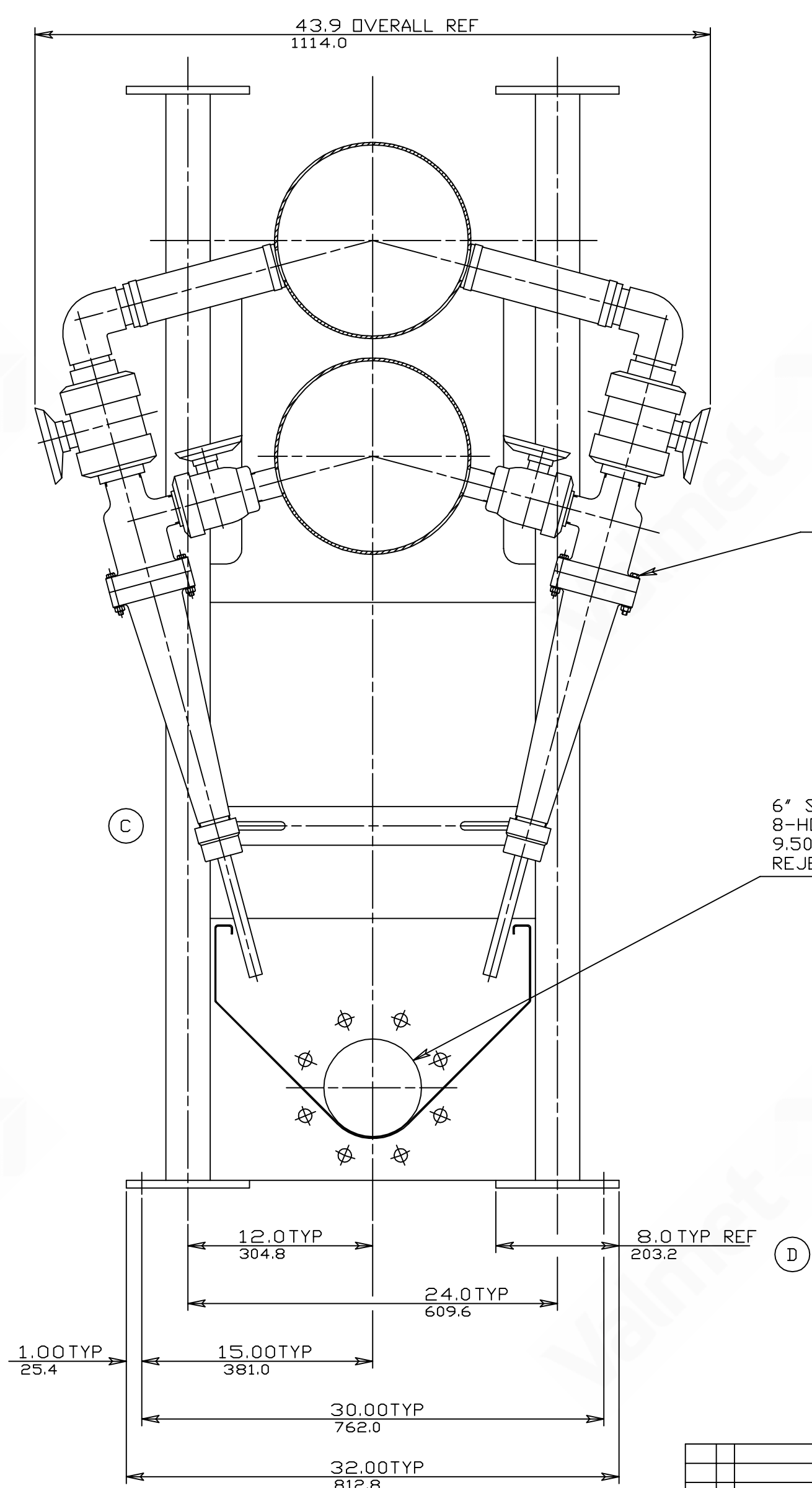
1

2

3

4

5



.312-18 STAINLESS STEEL  
SCREWS WITH NUTS.  
6-REQ'D PER CLEANER REF

6" STD 150# CONNECTION  
8-HOLES, .875 DIA ON A  
9.500 DIA BC REF.  
REJECTS CONNECTION

NOTES:

1. IF LESS THAN 40 CLEANERS ARE REQUIRED, CLEANERS ARE TO BE OMITTED FROM INLET/OUTLET CONNECTION END OF CLEANER STAND AND UNUSED NIPPLES ON HEADER PIPES ARE TO BE PLUGGED.
2. LIFT STAND FROM LIFTING LUGS. DO NOT LIFT FROM HEADER PIPES.
3. MILL PIPING SHOULD BE INDEPENDENTLY SUPPORTED.
4. FOR OPERATING AND  $\Delta P$  PRESSURES, SEE CUSTOMER CERTIFICATION SHEETS.
5. NO FLUSH WATER REQUIRED FOR CLEANERS.
6. MINIMUM CLEARANCE AROUND CLEANERS FOR OPERATION AND MAINTENANCE IS 2 FEET (610 MM).
7. THIS DWG HAS DUAL  $\frac{\text{INCH}}{\text{MM}}$  DIMENSIONS.
8. WEIGHTS:  
EST. WGT W/O STOCK = 1917 LBS (870 KG).  
EST. WGT W/STOCK = 3606 LBS (1636 KG).  
(FILLED UP TO VALVES)

SECTION "A" - "A"  
(SCALE 1:5)

				UNLESS OTHERWISE SPECIFIED:	© THIS PRINT IS THE PROPERTY OF BELOIT CORPORATION. THE INFORMATION THEREON IS SUBMITTED IN CONFIDENCE.				SIMILAR TO DRAWING NO. 79-123078	CONTROL NO.	WEIGHT	QTY. REQ	WANTED
-	REDRAWN ON CADRA	26-JAN-98	SRN	MACHINING TOLERANCES IN/MM	UNIT OF MEASURE	IN	1000	EXCEPT AS NOTED	PROJECTION	SHOP ORDER /CHARGE NO.	GEN'L ARRANGEMENT & INSTALLATION		
D	ADDED 8.0 DIMENSION	21-DEC-94	TR	1. DR 1.000 = ±.040,±1.00 mm	DATE					FIRST USED DRAWING NO. L/A	40 CLEANER MODULE		
C	REV. NOTE 2/ADDED LIFTING LUGS	04-SEP-91	MJC	1.00 DR 1.000 = ±.010,±0.25 mm						DATE 16-NOV-89	POSIFLOW 60 CLEANER		
C	UPDATE PICTURE TO LATEST DESIGN	04-SEP-91	MJC	1.000 DR 1.000 = ±.005,±0.13 mm									
REV	ALTERATIONS	DATE	BY	FOR CUTOFF, FABRICATION AND CASTING TOLERANCES AND STD SHOP PRACTICES, SEE FACTORY MANUAL.	BELOIT CORPORATION				B/M MODE D	DRAWN SLH	CHK'D AJH	APP'V'D JR	ENG JAW
SUPERSEDES				SUPERSEDED BY						I.E. -	SCALE 1:8	SH 1 OF 2	D79-123079
				ANGULARITY TOLERANCES ± 1/2°									

ADRA

REV D LEVEL