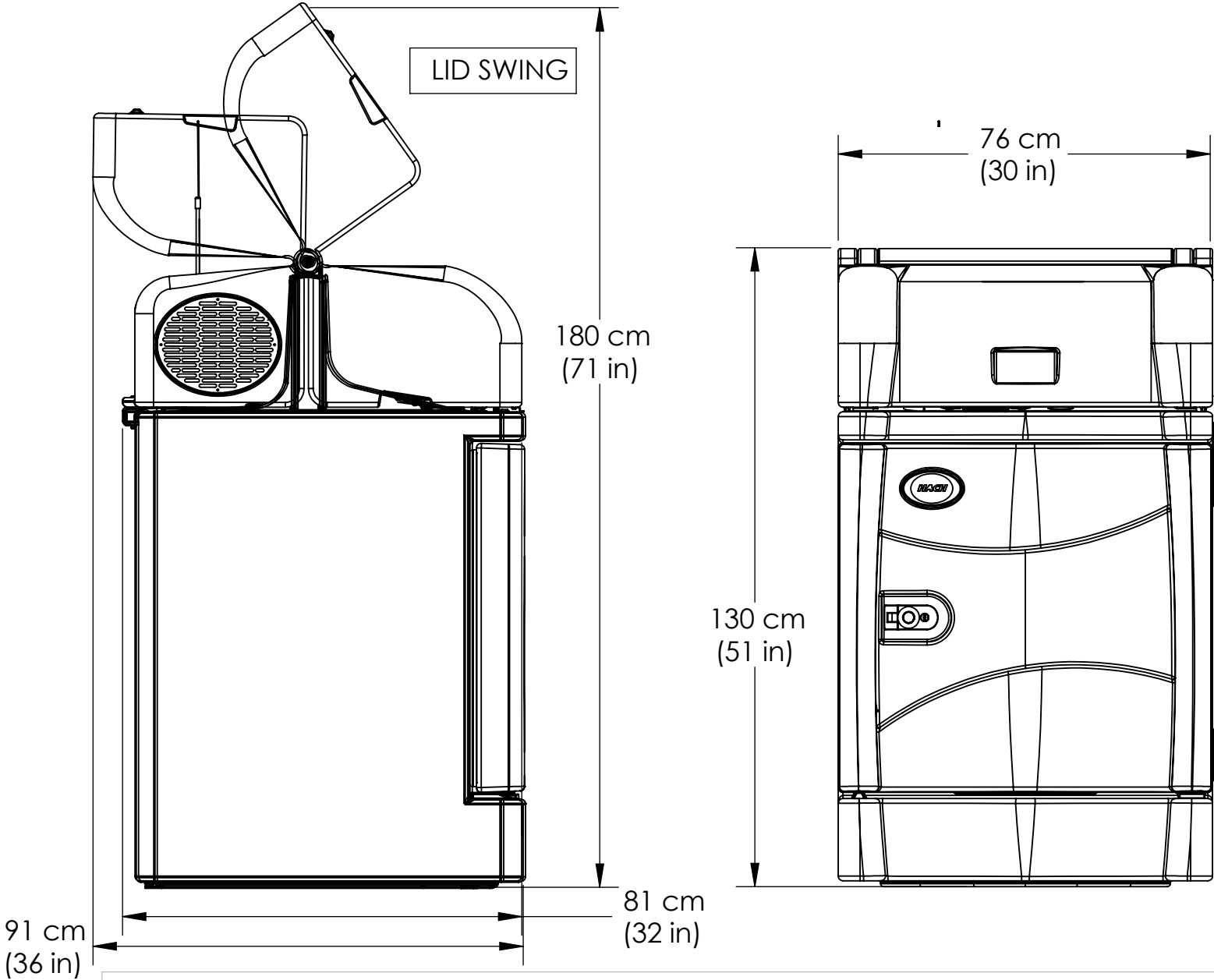



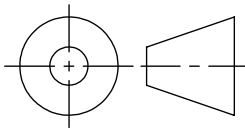
PARAMETER	115V MODEL	230V MODEL
POWER PLUG/CORD LENGTH	NEMA 5-15P/ 6 FT NOMINAL	CEE 7-7 (EU1-16P)/6FT NOMINAL
INPUT AC POWER	115VAC ± 10% / 60Hz	230VAC ± 10% / 50Hz
AC LOAD CURRENT (INCLUDES COMPRESSOR RUN-CURRENT) *STANDARD PRODUCT (STD) *STD + OPTIONAL CONTROLLER HEATER	4.2 A 6.4 A	2.7 A 4.1 A
COMPRESSOR MOTOR LOCKED ROTOR CURRENT	7.1 A	7.6 A
OVERCURRENT PROTECTION * HEATERS, COMPRESSOR, CONDENSER FAN *AC-DC POWER SUPPLY	7.5 A SINGLE-POLE CIRCUIT BREAKER T2A, 250VAC FUSE (2)	5 A DOUBLE-POLE CIRCUIT BREAKER T2A, 250VAC FUSE (2)
CLEARANCES	AT LEAST 15cm (6 INCHES) TO SIDE AND REAR WALLS	
WEIGHT ENVIRONMENTAL	86 KG (190 LBS)	
* INSTALL CATEGORY	II	
* POLLUTION DEGREE	2	
*ELEVATION	2000 METERS MAX. (6562 FEET)	
*OPERATING TEMPERATURE STANDARD PRODUCT (STD) STD + AC BACKUP BATTERY STD + OPTIONAL CONTROLLER HEATER STD + CONTROLLER HEATER + BACKUP BATTERY	0 TO 50 °C (32 TO 122 °F) 0 TO 40 °C (23 TO 104 °F) -40 TO 50 °C (-40 TO 122 °F) -15 TO 40 °C (5 TO 104 °F)	
*STORAGE TEMPERATURE	-40 TO 60 °C (-40 TO 140 °F)	
*RELATIVE HUMIDITY	0 TO 95%	
INSULATION THICKNESS	MINIMUM THICKNESS IS 2" ON TOP, BOTTOM, AND SIDES OF REFRIGERATOR CABINET	

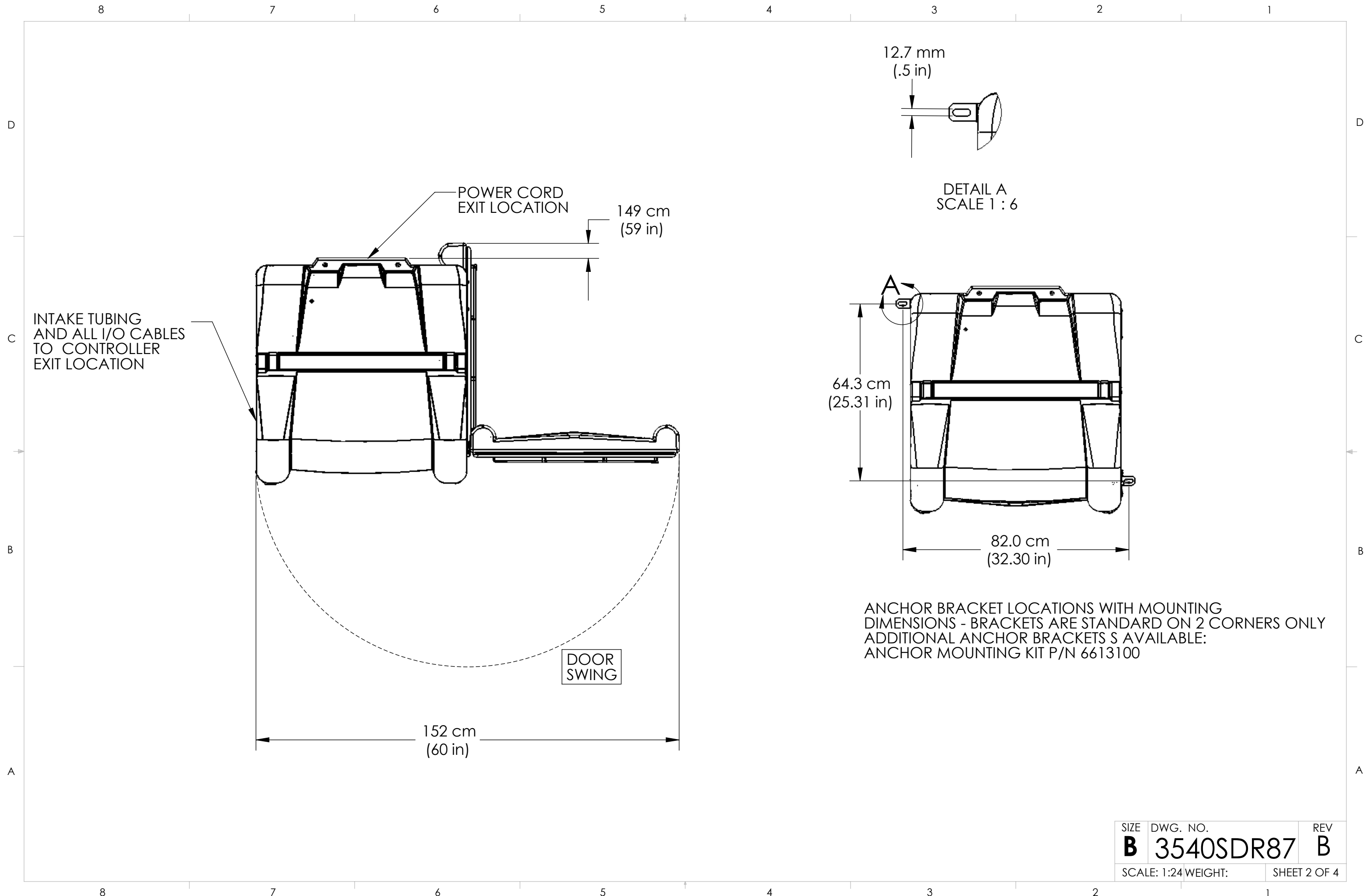
NOTE: THIS PRODUCT IS NOT INTENDED FOR USE WITH A SPLIT-PHASE (3-WIRE, SINGLE-PHASE, MID-POINT NEUTRAL) AC POWER SYSTEM. USE THIS PRODUCT ONLY WITH A 3-WIRE HOT/NEUTRAL/GROUND) POLARIZED AC POWER SYSTEM. BE SURE THAT ACCESS TO THE POWER CORD PLUG IS NOT BLOCKED OR OBSTRUCTED. THE AWRS SAMPLER IS NOT PROVIDED WITH A POWER SWITCH. THE CORD PLUG SERVES AS THE LOCAL DISCONNECT.

REVISION		
REV	DESCRIPTION	APPROVED
B	12-625	LAURA STEELE



NOTICE--HACH COMPANY CLAIMS PROPRIETARY RIGHTS IN THE INFORMATION DISCLOSED ON THIS DRAWING. IT IS ISSUED IN CONFIDENCE FOR ENGINEERING INFORMATION ONLY AND MAY NOT, IN WHOLE OR IN PART, BE USED TO MANUFACTURE ANYTHING, WHETHER OR NOT SHOWN HEREON, REPRODUCED OR DISCLOSED TO ANYONE WITHOUT DIRECT PERMISSION FROM HACH COMPANY.

MATERIAL	UNLESS OTHERWISE SPECIFIED:			NAME	DATE	 <div>HACH COMPANY 5600 LINDBERGH DR. LOVELAND, CO. 80539</div>		
	DIMENSIONS ARE IN INCHES TOLERANCES: .X = ±.03 .XX = ±.01 .XXX = ±.005 ANGLES = ±.25°			DRAWN	KJ 06/19/08			
				ENGINEER	KJ 06/19/08			
				THIRD ANGLE PROJECTION			TITLE:	
INTERPRET GEOMETRIC TOLERANCING PER: ANSI Y14.5M 1994						AWRS SUBMITTAL DRAWING		
DO NOT SCALE DRAWING						SIZE	DWG. NO.	REV
						B	3540SDR87	B
			SCALE: 1:1		WEIGHT:	SHEET 1 OF 4		



SIZE	DWG. NO.	REV
B	3540SDR87	B
SCALE: 1:24 WEIGHT:		SHEET 2 OF 4

8

7

6

5

4

3

2

1

D

D

TOP MOUNTED
COMPRESSOR/CONDENSER
WITH FAN LOCATED
IN THIS COMPARTMENT

VENT LOCATION
(BOTH SIDES)

INTAKE TUBING
AND ALL I/O CABLES
TO CONTROLLER
EXIT LOCATION

OPTIONAL LATCH
FOR TOP COMPARTMENT
PN 5697700

COMPRESSION
GASKET
DOOR SEAL

LOCKABLE LATCH
ON REFRIGERATOR
COMPARTMENT

4 ADJUSTABLE
LEVELING FEET
(ONE ON EACH
CORNER OF CABINET)

37.7 IN.
POWER CORD
EXIT LOCATION

16.1 IN.
POWER CORD
EXIT LOCATION

BACK VIEW
W/ BACK COMPARTMENT OPEN

C

B

A

SIZE	DWG. NO.	REV
B	3540SDR87	B
SCALE: 1:24 WEIGHT:		SHEET 3 OF 4

2

1

ALL WEATHER SAMPLER CABINET SEISMIC ANCHORAGE CALCULATIONS

CONCLUSIONS FROM SEISMIC CALCULATIONS:
Sufficient anchorage of the AWRS unit installed in a zone with the greatest seismic forces requires the use of 4 anchors - 3/8" Hilti KWIK Bolt TZ304 Stainless Steel Expansion Anchors.
The anchors must have a minimum embedment of 2 inches into concrete at least 5 inches from the edge of the concrete pad.
The concrete must have a strength of at least 3,000 psi with a minimum thickness of 4 inches.

See following pages for more details.

SIZE B	DWG. NO. 3540SDR87	REV B
SCALE: 1:24 WEIGHT:		SHEET 4 OF 4