

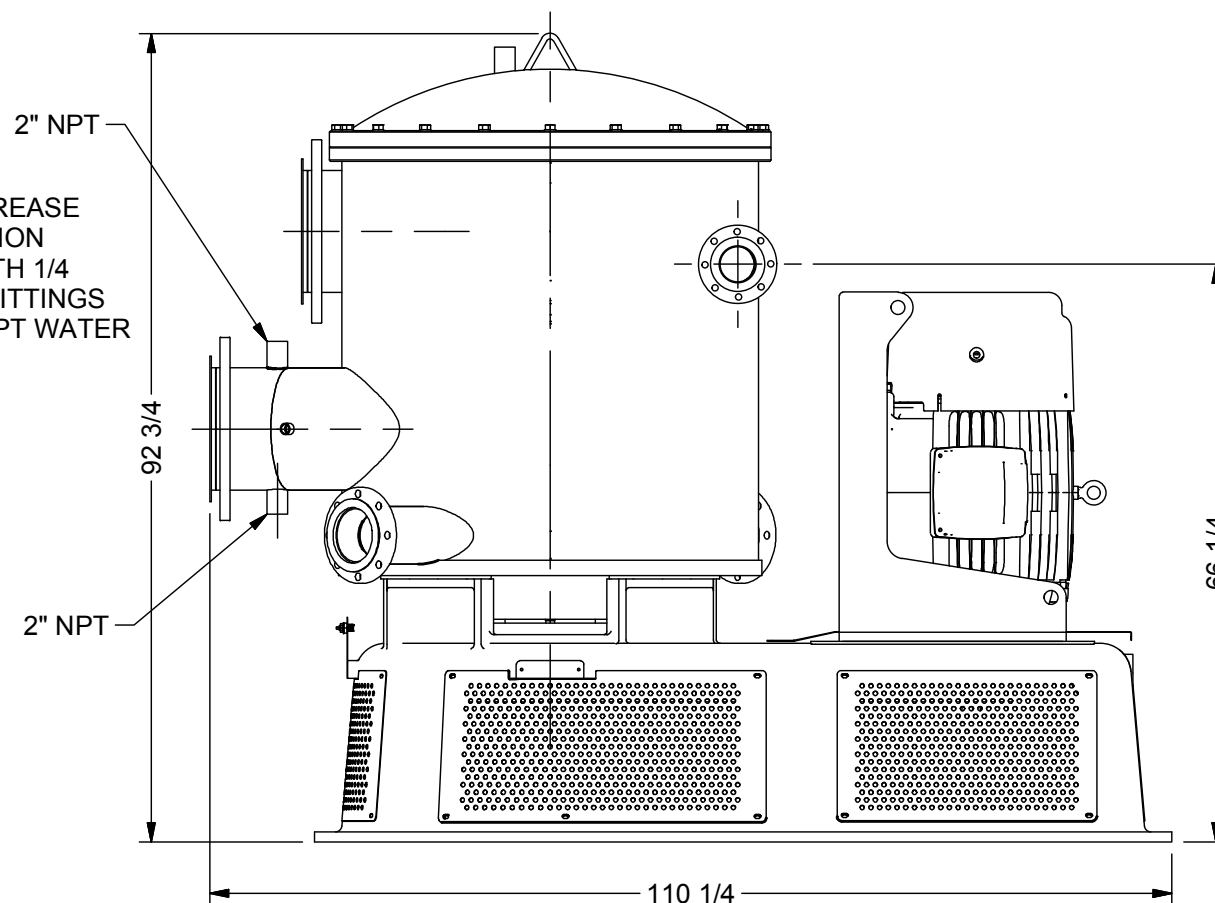
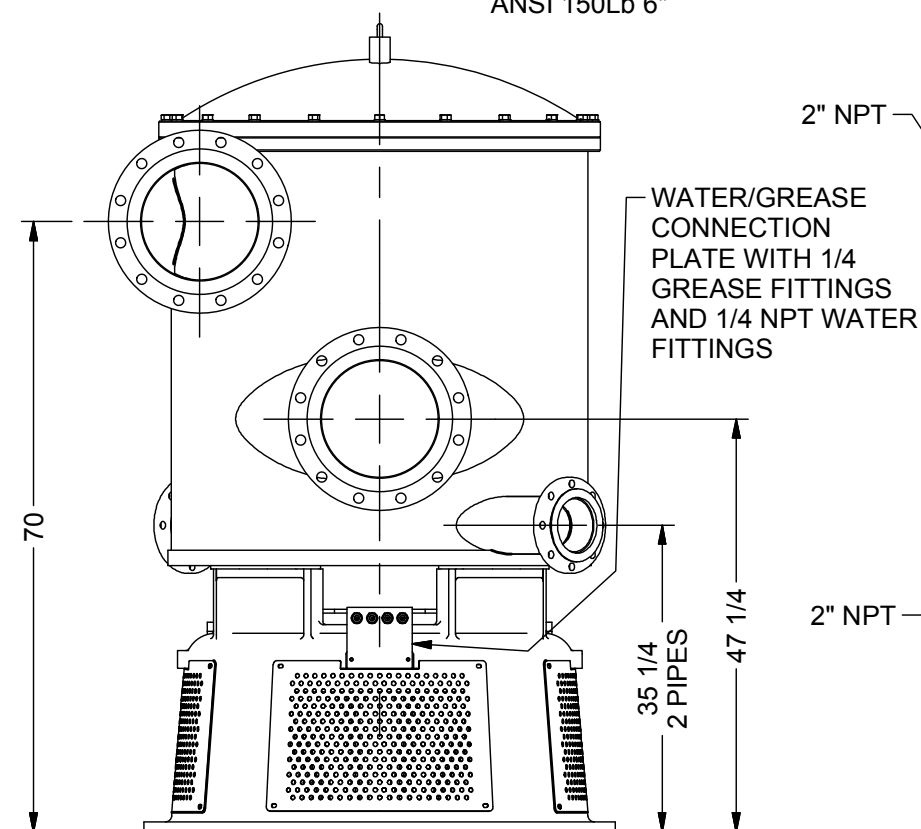
ROTOR ROTATION: CLOCKWISE (view from top)  
ROTOR TURN SPEED: 23 m/s (540 RPM)

MAIN MOTOR (PREPARED BY AFT)  
MAKER: US MOTORS  
MODEL: 8P200P2C  
OUTPUT: 200 HP  
POLE: 4  
VOLTAGE: 460V  
FREQUENCY: 60 Hz

WEIGHT (ABOUT)  
OPERATING WEIGHT: 14025lbs (6375kg)  
MAX. DESIGNING PRESSURE 0.5 MPa (72psig)  
MAX. DESIGNING TEMPERATURE: 80°C (176°F)

COLORS  
MACHINE: AFT BLUE  
SAFETY COVER: SAFETY YELLOW

NOTE: FOUNDATION, PIPING AND WIRING  
ARE PREPARED BY CUSTOMER




MATERIAL:  
-LID: STAINLESS STEEL  
-HOUSING: CORROSION RESISTANT STEEL  
-SCREEN & MOTOR MOUNT: IRON

Please return the signed Specifications  
(Approval Drawing) by \_\_\_\_\_

Acknowledged and approved by \_\_\_\_\_

Signature: \_\_\_\_\_ Date: \_\_\_\_\_

QTY:		DES: I.PAQUETTE		AFT LENNOXVILLE	
REF:		CREATION DATE 09/12/2017	125	BIRD CENTRISORTER M800 CAPITAL EQUIPEMENT <b>APPROVAL DRAWING</b>	
MATERIAL				DRAWING NUMBER <b>CE-0009_X-1</b>	REVISION <b>0</b>
ALL DIMENSIONS ARE IN INCH					SHEET <b>1 / 1</b>