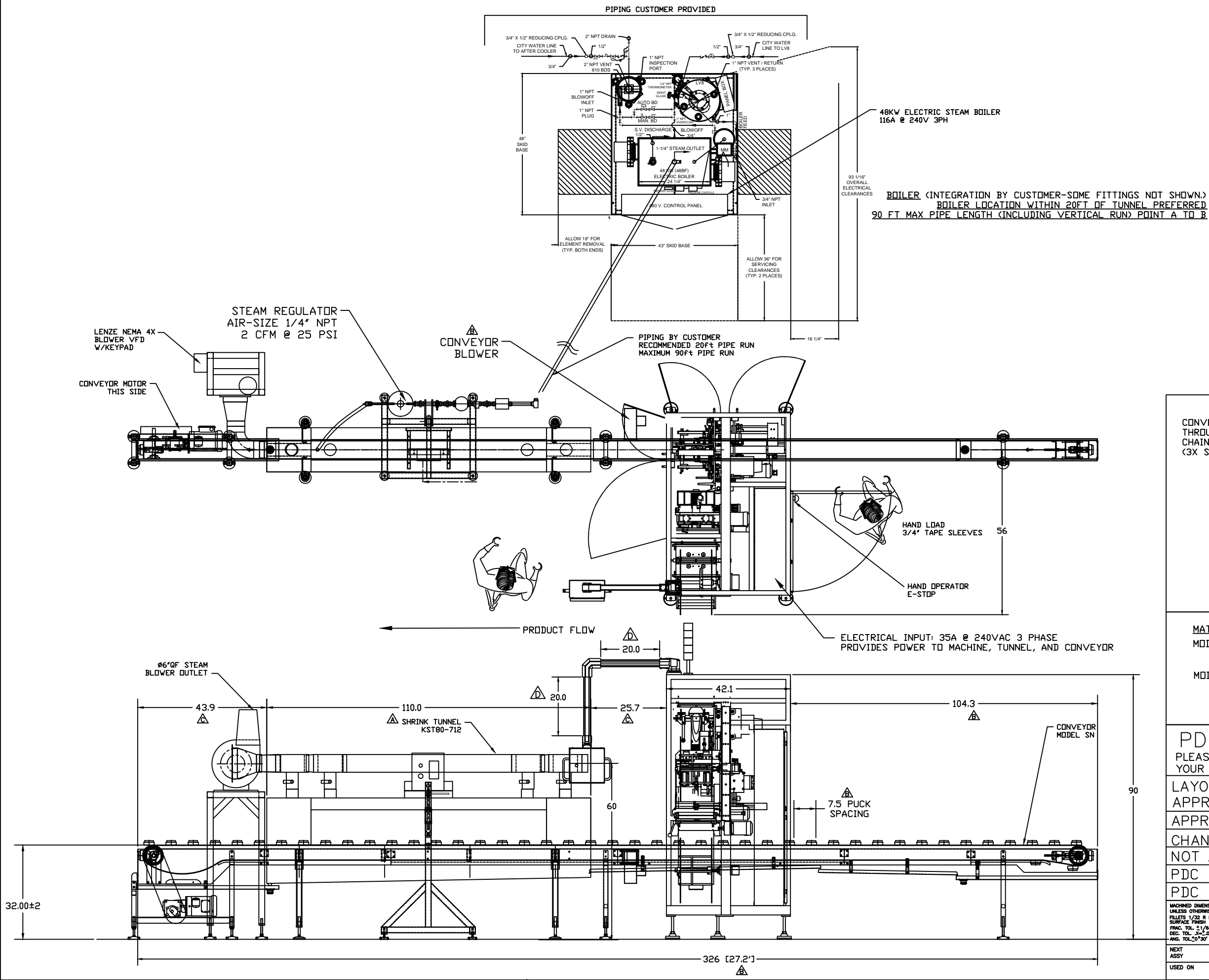
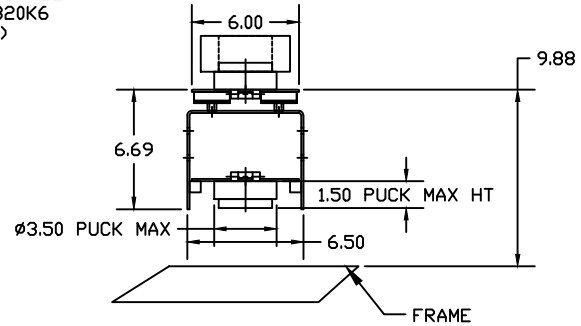


REVISIONS			
SYM	DESCRIPTION	DATE	BY
A	KST-80 was KST-55	08/14/15	DJB
B	27ft length; 7.5" spacing; add blower	08/18/15	RM
C	Adjust conv section seams and tunnel location	08/18/15	RM
D	HMI ARM DIMENSIONS MODIFIED	9/16/15	JAD/LU



CONVEYOR SECTION  
THROUGH TUNNEL.  
CHAIN: LF820K6  
(3X SCALE)



**MATERIALS**  
MODEL KST55-712 304 STAINLESS STEEL  
COPPER  
MODEL SN-20 304 STAINLESS STEEL  
UHMW  
PHENOLIC

**PDC APPROVAL DRAWING COPY**  
PLEASE SIGN & RETURN ONE COPY. KEEP ONE COPY FOR  
YOUR RECORDS.

LAYOUT DRAWING APPROVALS	REV.	SIGNATURE	DATE
APPROVED AS IS	-	---	//
CHANGES REQ'D.			
NOT APPROVED			
PDC MECH ENG		RMorse	8/18/15
PDC ELEC ENG		---	//

MACHINED DIMENSIONS UNLESS OTHERWISE SPECIFIED: FILLET 1/32 R EDGES BREAK .005 SURFACE FINISH 32 MICROFINISH FRAC. TOL. 21/64 DEC. TOL. .0005 .001 .002 .005 ANG. TOL. 20'30"		TITLE R250, W/STEAM TUNNEL PRESTO TAPE		PDC INTERNATIONAL CORPORATION 8 SHEEHAN AVENUE NORWALK, CONNECTICUT 06854 USA	
NEXT ASSY	SCALE 1:16	DWN JAD	DATE 8/6/15	SIZE	DRAWING NUMBER
USED ON	QTY	CHKD	DATE	D	INR250Presto1245
		APPR	DATE		ISSUE