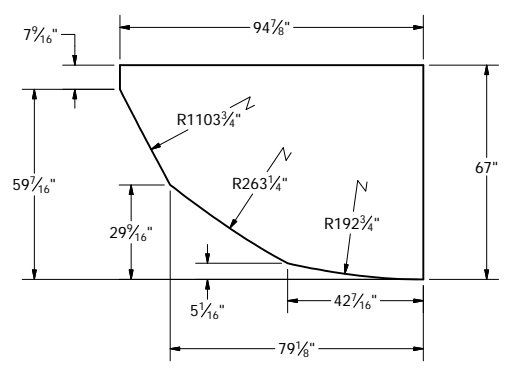
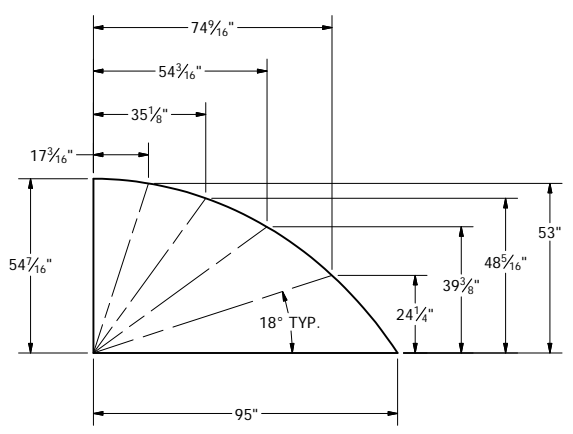


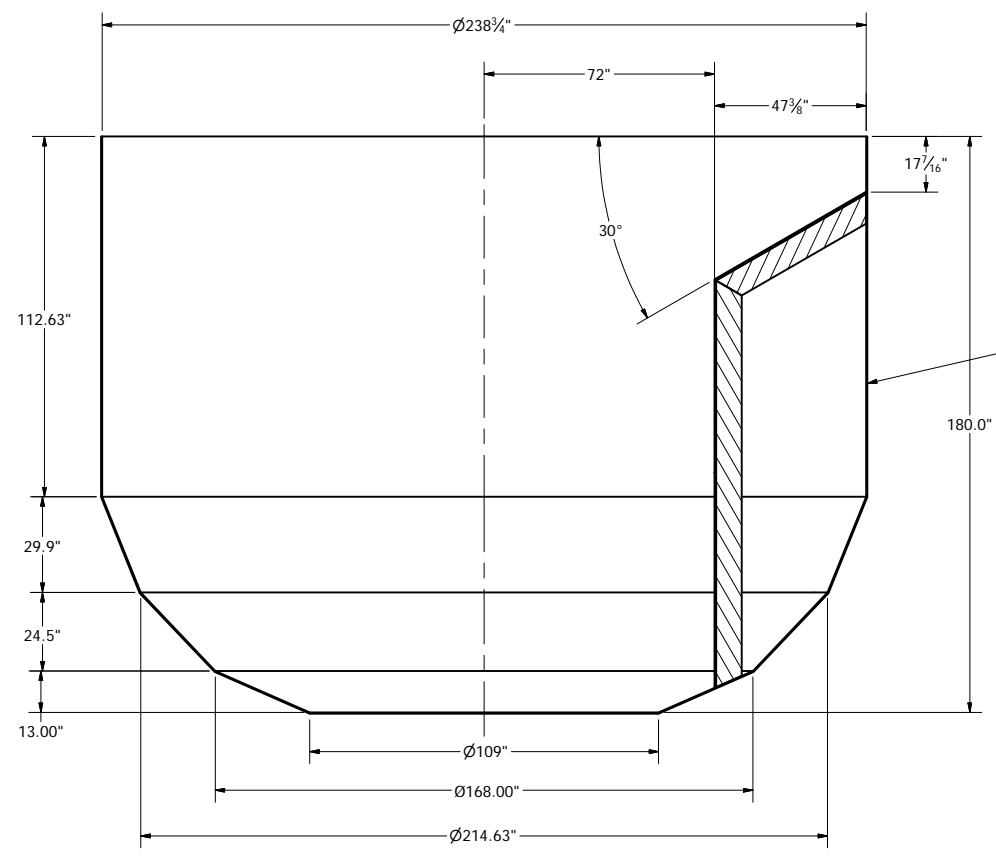
PARTS LIST			
ITEM	QTY	MATERIAL	DESCRIPTION
1	1	Stainless Steel	EXISTING PULPER TUB
2	2	Stainless Steel, 304L	PLATE, 3/8" TK. PER DETAIL ITEM #2
3	2	Stainless Steel, 304L	PLATE, 3/8" TK. PER DETAIL ITEM #3
4	2	Stainless Steel, 304L	PLATE, 3/8" X 60" X 94-7/8"
5	1	Steel, Mild	W8 X 31# X 54-1/8" LG
6	1	Steel, Mild	W8 X 31# X 127" LG
7	2	Steel, Mild	W8 X 31# X 50-3/4" LG
8	2	Steel, Mild	W8 X 31# X 125" LG



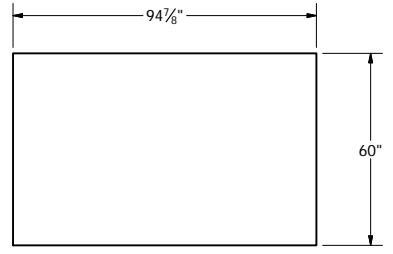
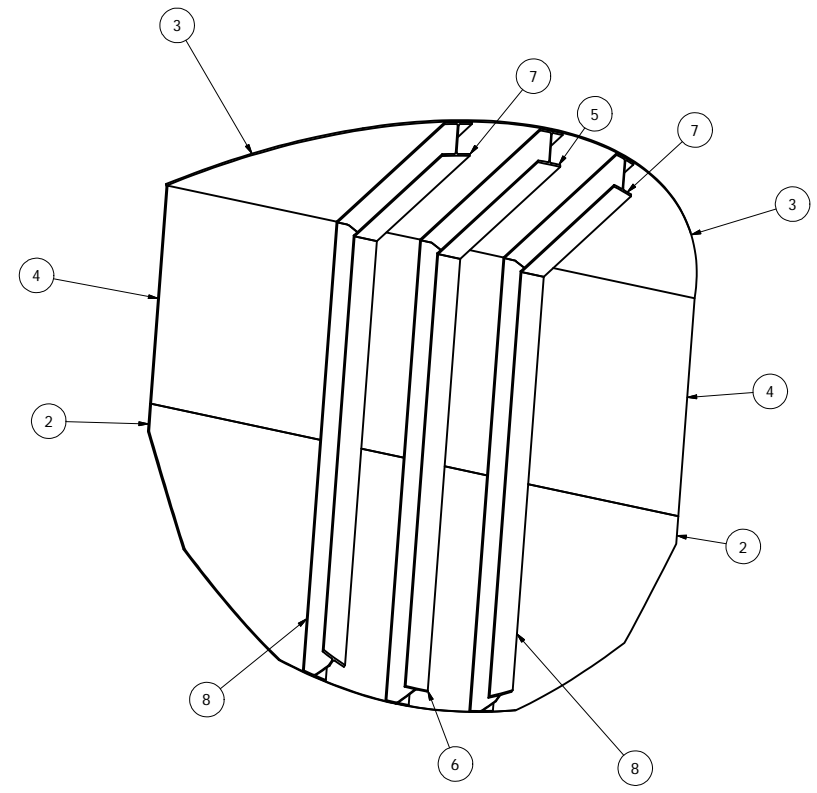
DETAIL ITEM #2
(2) REQ., 3/8" TK., 304L
APPROX. 720#/EA



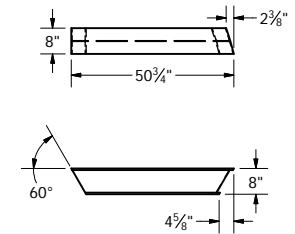
DETAIL ITEM #3
(2) REQ., 3/8" TK., 304L
APPROX. 525#/EA



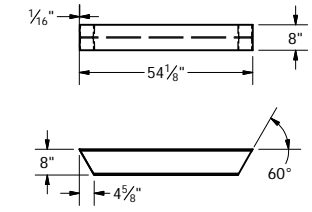
TYP. HALF SECTION VIEW



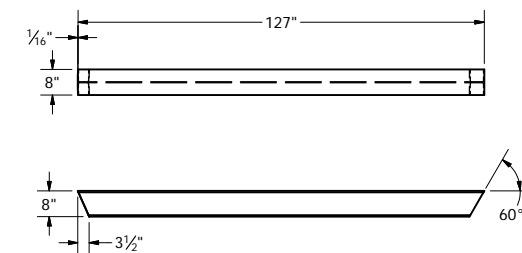
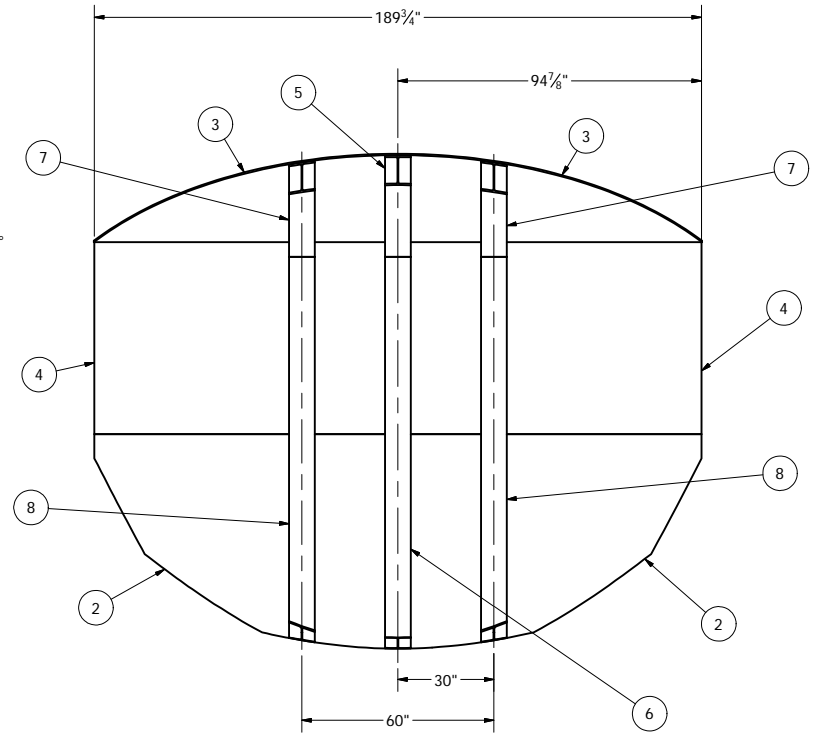
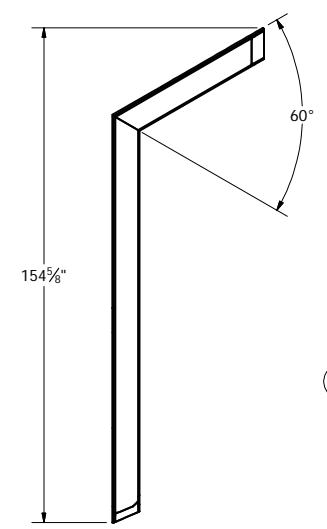
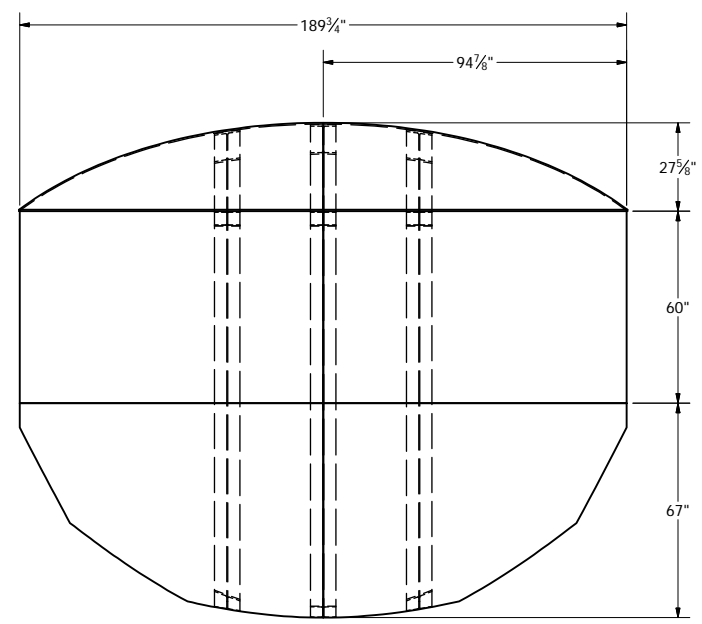
DETAIL ITEM #4
(2) REQ., 3/8" TK., 304L
APPROX. 825#/EA



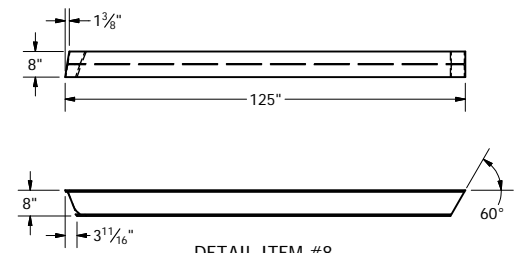
DETAIL ITEM #7
(2) REQ., STEEL
(1) AS SHOWN - (1) OPP. HAND



DETAIL ITEM #5
(1) REQ., STEEL



DETAIL ITEM #6
(1) REQ., STEEL



DETAIL ITEM #8
(2) REQ., STEEL
(1) AS SHOWN - (1) OPP. HAND

<p align="center">CONFIDENTIAL</p> <p><small>THIS DRAWING AND THE ARTICLE(S) IT DEPICTS ARE THE PROPERTY OF MTR ENTERPRISES, LLC. THEY MAY NOT BE DISCLOSED OR USED BY ANYONE WITHOUT THE EXPRESSED WRITTEN CONSENT OF MTR ENTERPRISES, LLC.</small></p>		 <p>MTR Martco New Components - Rebuilds - Repairs</p>	
<p>WEIGHT: 21041.348 lbmass SHEET 1 OF 1</p> <p align="center">STANDARD TOLERANCE UNLESS OTHERWISE SPECIFIED</p> <p>ONE (1) DECIMAL DIM. +/- 0.050" ANGLES +/- 1/2</p> <p>TWO (2) DECIMAL DIM. +/- 0.010" UNFINISHED SURFACES +/- 0.125"</p> <p>THREE (3) DECIMAL DIM. +/- 0.003" FRACTIONAL DIM. +/- 1/32"</p>		<p>TITLE D-CHORD WALL - 20' PULPER FITCHBURG PAPERBOARD</p>	
<p>NO FINISH NORMALLY REQUIRED. CLEAN UP ONLY TO MAINTAIN DIMENSIONAL STABILITY OR TO REMOVE UNUSUAL SURFACE IRREGULARITIES.</p>	<p>DRAWN BY dan miller</p>	<p>DRAWN DATE 2/26/2018</p>	<p>CHK BY</p>
		<p>CHK DATE</p>	<p>DWG. NO. 550-C-982</p>
			<p>REV.</p>