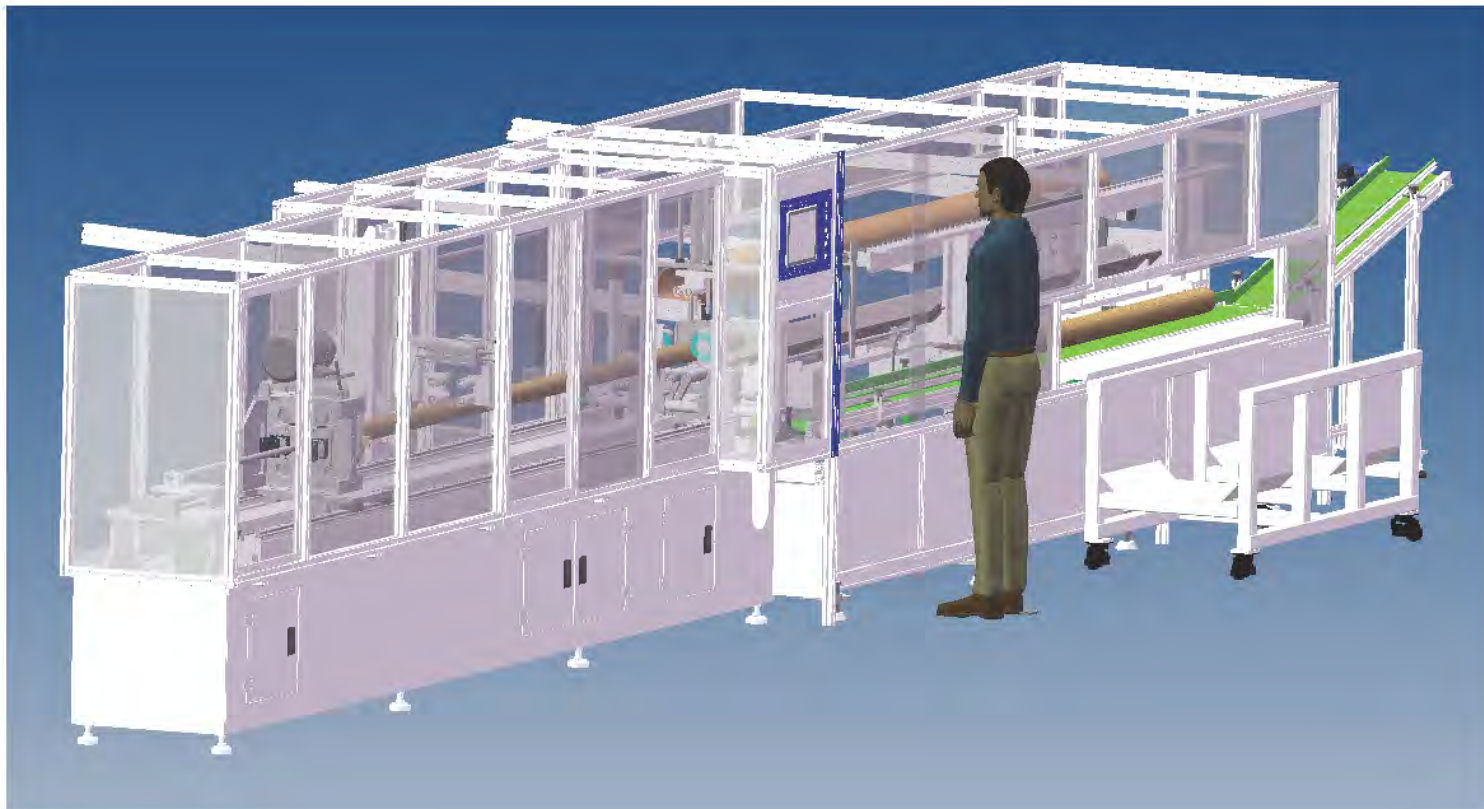




Visicut 3850 INSTALLATION

Fully Automatic Paper Core Cutting Machine



Please refer to the Safety Notice before Installation.

Installation

Index of Contents

4.1	Precautions	-----
4.2	Unit weight information	-----
4.3	Ground plan	-----
4.4	Installation information	-----

Unpacking, transport and movements of the machine.

No person should be allowed to be next to the machine while executing the above.

Environment temperature: 0 °F- 104 °F, relative humidity below 85%.

Avoid strong electromagnetic interference around the machine.

Do not open the electrical case when the machine is powered, only professional people can operate the electrical installations.

After unloading

- Lifting equipment for 5 tons is required.
- Remove all packing.
- Check machine and spare parts in view of probable damages.
- Check completeness of spare parts.

In case of damage please inform the below mentioned companies in written form:

- Railway company, truck forwarder or shipping company
- Insurance company
- Berkeley Machinery

Installation location and condition

- Vibration-free
- Floor should allow for the weight of the machine - without any movement
- No need to fix it with screws and bolts into the ground after machine leveling.

After the installation

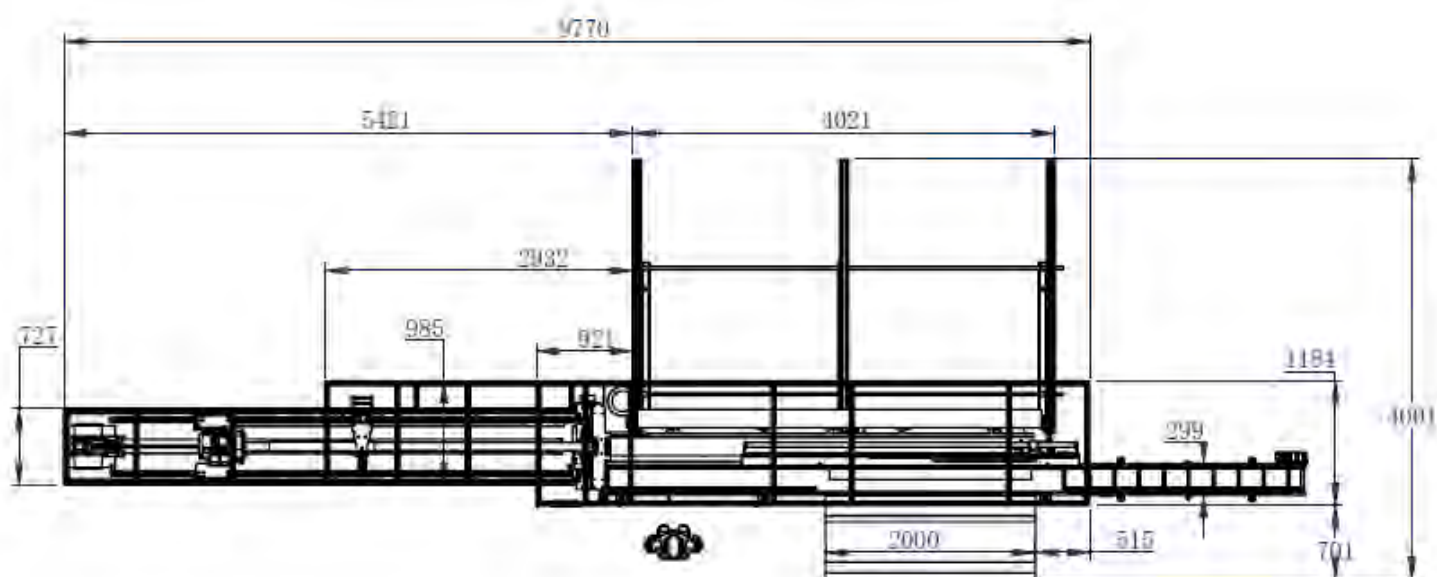
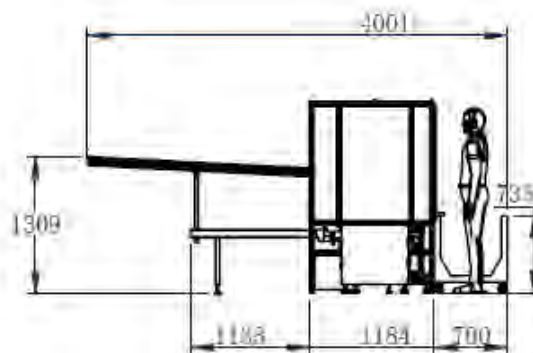
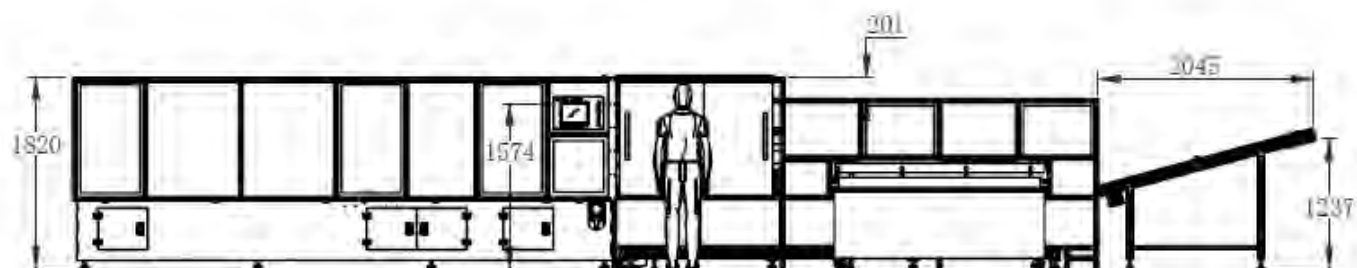
- Removal of anti-corrosive grease and oil should be done with kerosene or benzene
- Do not use sharp tools when removing

Unit weight information

One Package total gross weight is 2 tons



Floor plan



Unit: mm

The connection of electric power and compressed air to the machine should only be performed by an authorized technician.

The electric plan must be used.

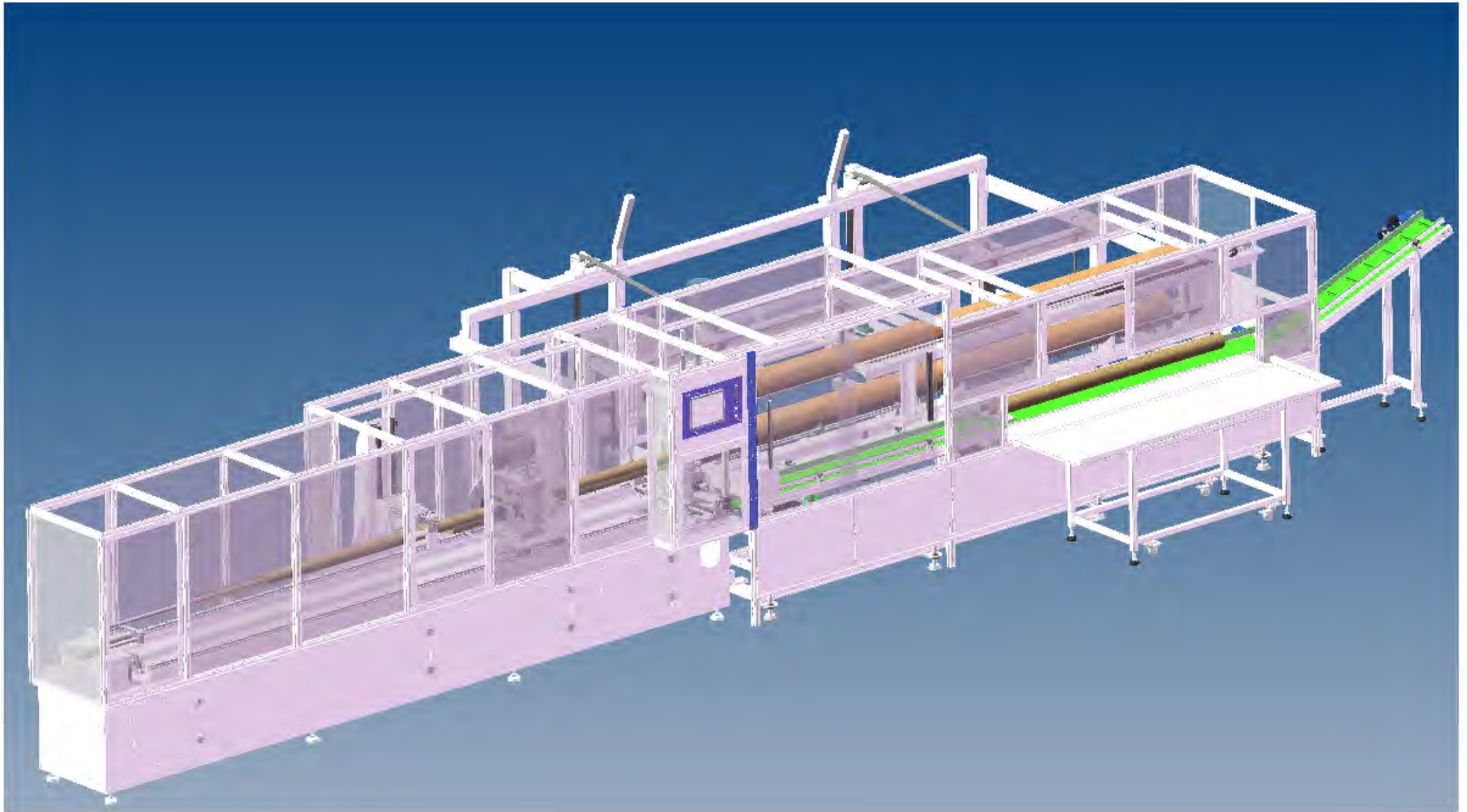
Installation

Before Loading the layout photo





With Autoloader Drawing



The machine will be wrapped as follows:

Core Cutter Package total gross weight is 2 ton

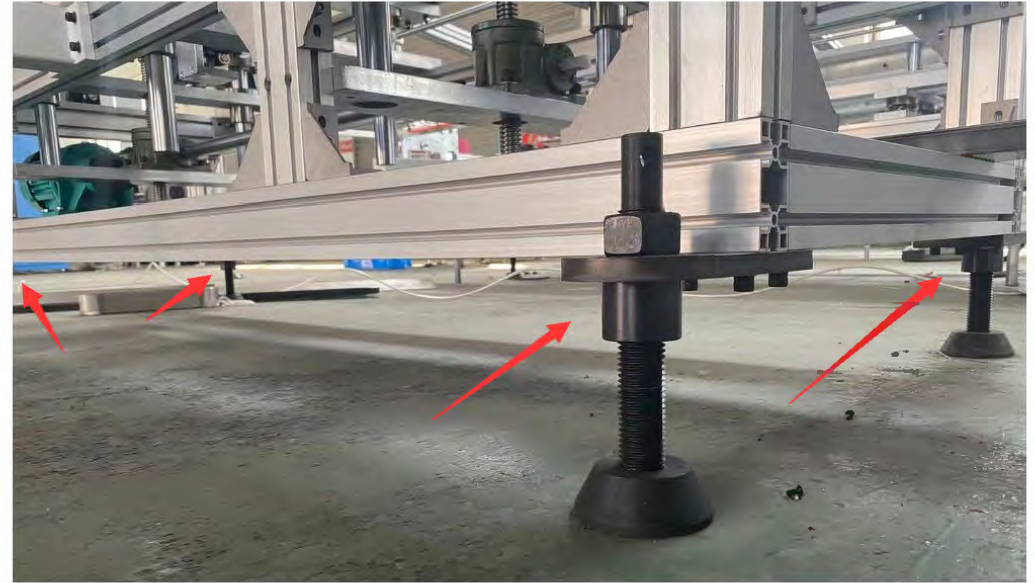


Autoloader Package total gross weight is 1 ton

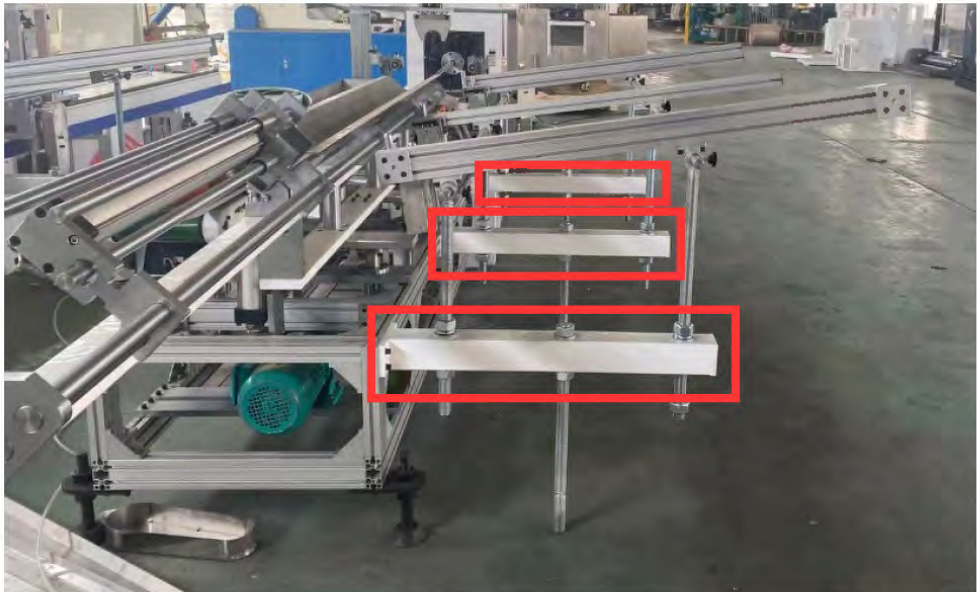


1. First Step - Installing Loading and Unloading Stand

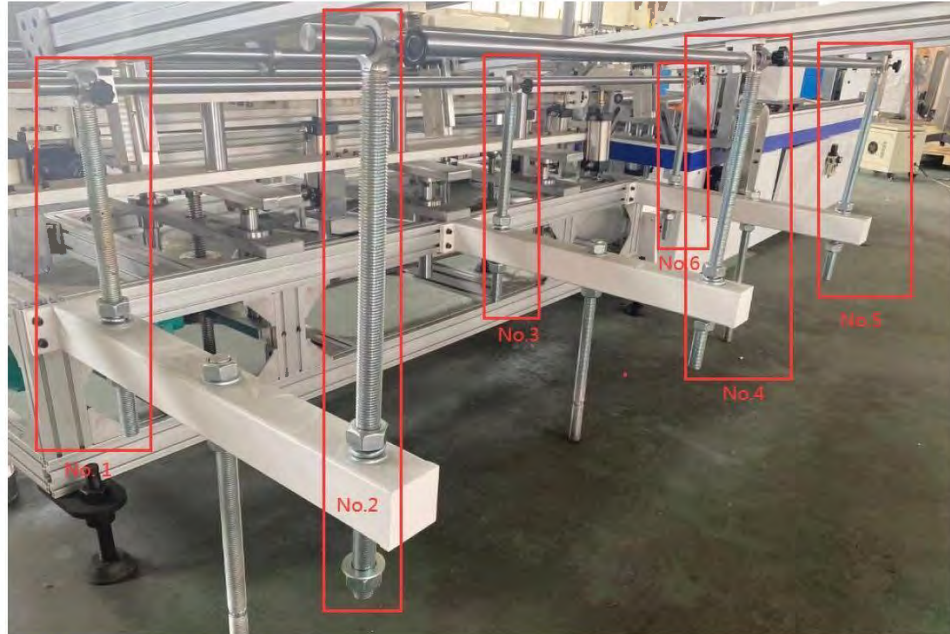
1.1 Installing the footplates / 4 pcs footplates



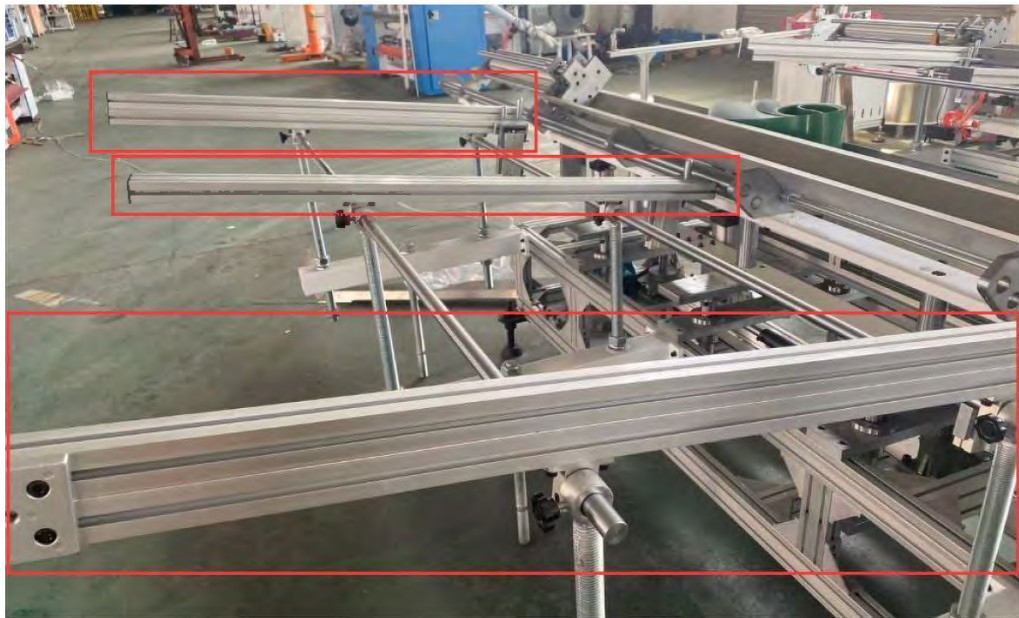
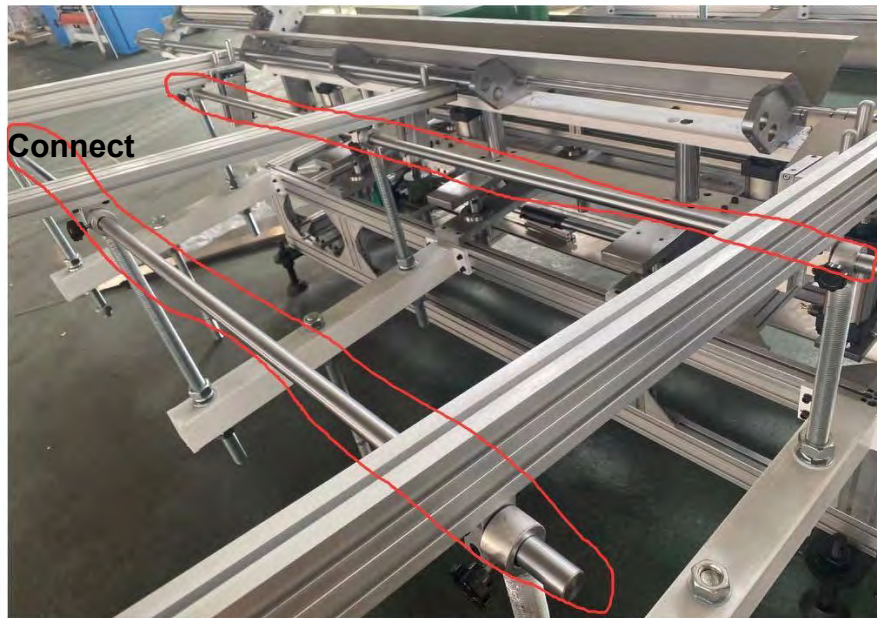
1.2 Installing the white supporter / Each Supporter include 4 pcs screws



1.3 Installing the Lift Screw Rod



1.4 Installing the Rods and Bevel Stick Together

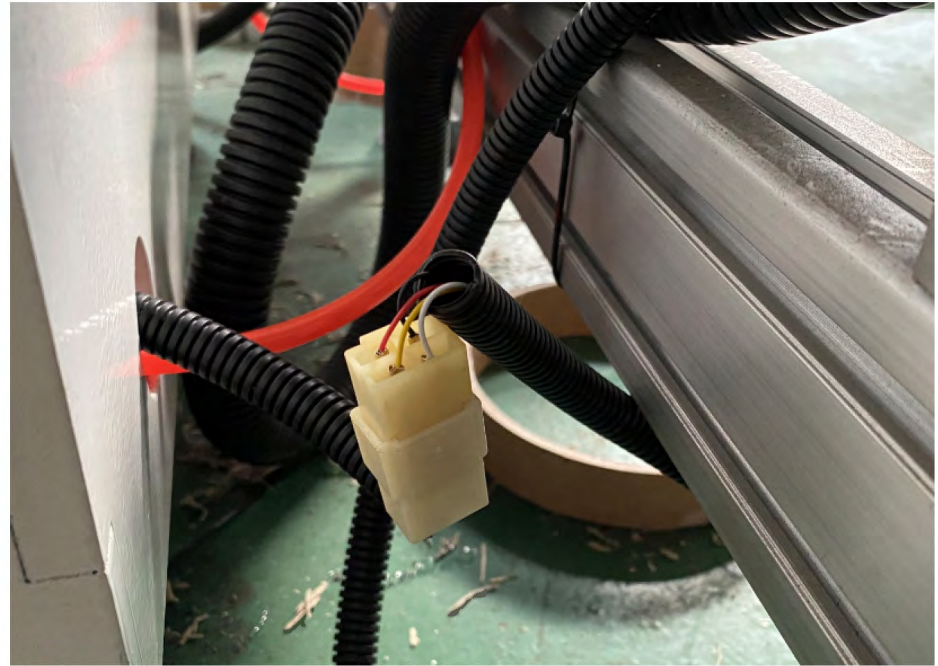
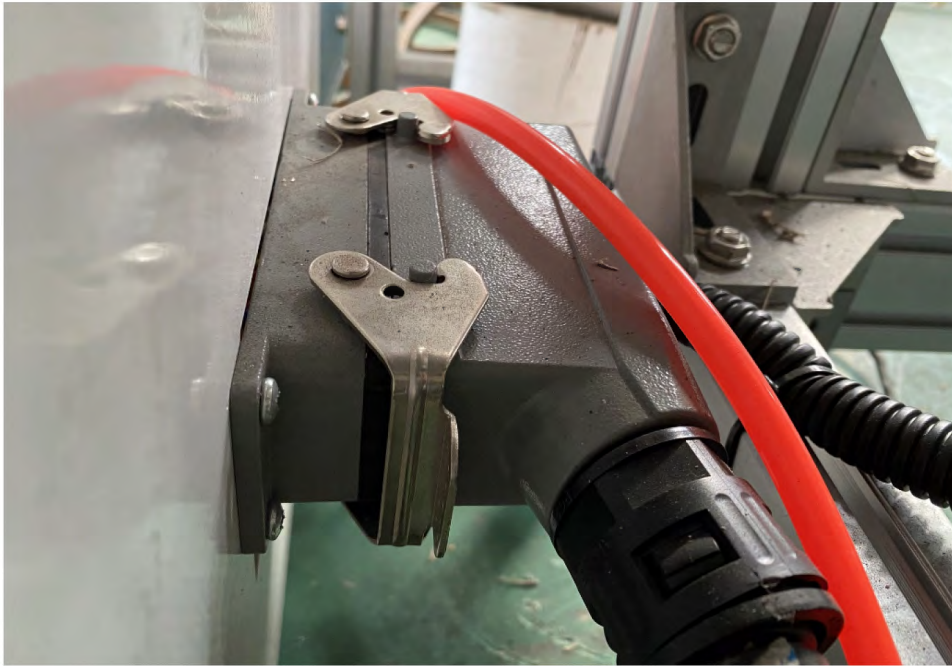




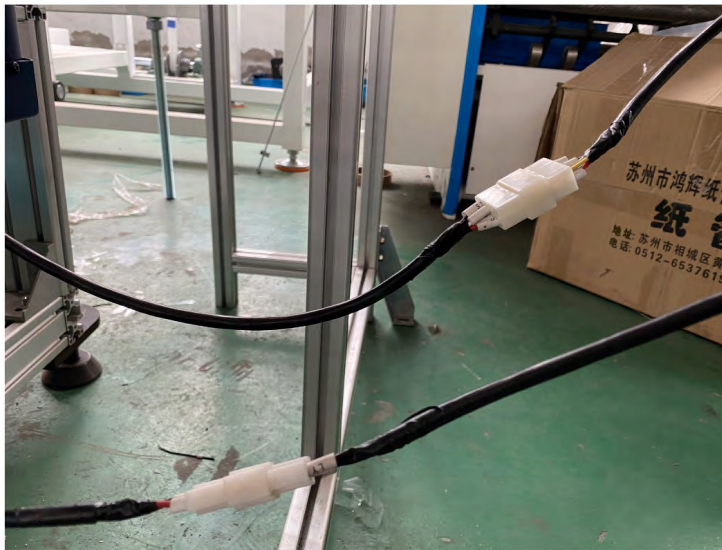
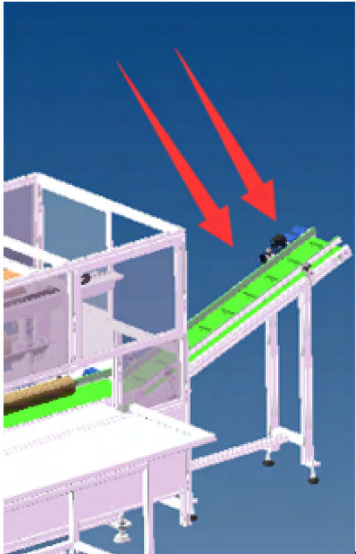
1.5 Connecting the air tube



2. Connecting Loading & Unloading Stand with Cutter Unit



3. Connecting Smaller Core Tube stand with Transfer Belt



4. Connecting The Core Loader – You can connect it with machine directly according to following drawing

