

---

## Dragon Products and Industries

---

- Plant Locations: Silsbee and La Porte, Texas

### **500 BARREL SMOOTH WALL LIQUID STORAGE TANK SPECIFICATIONS**

<u>FLOOR:</u>	1/4 PL, 4" V-bottom with integral formed side channels
<u>FLOOR SUPPORT:</u>	10" channel longitudinal runners with 8" channel and formed 1/4 PL channel crossmembers
<u>WALLS:</u>	1/4 PL solid welded, smooth inside, with formed channel supports outside
<u>ROOF:</u>	2 - step design, 1/4 PL solid welded with channel supports outside
<u>FRONT/REAR:</u>	1/4 PL solid welded, smooth inside, with formed channel supports outside
<u>DRAIN/FILL:</u>	4" drain at floor each end w/valve, 3" fill elbow at roof, 4" flange w/valve on front - flanged on inside, 8" flange on front w/blind cover plate - flanged on inside, 4" flange w/blind cover plate on roof, 2" coupling w/plug on roof, 4" coupling w/plug on roof, PV vent on roof
<u>MANWAY:</u>	21" manway on front, side, rear and roof
<u>PICK UP:</u>	Standard 5th wheel king pin
<u>WELDS:</u>	All welds <u>continuous</u> except substructure crossmembers
<u>AXLE:</u>	22,500 lb axle with air brakes, 11.00X22.5 tires on steel disc wheels
<u>ACCESS:</u>	Front ladder and stairway with grating walkway to roof manway, stationary and fold down handrail system
<u>HYDRO TESTING:</u>	Full capacity test @ 3 psi
<u>DIMENSIONS:</u>	Overall; 42' long, 8'-6" wide, 11' high 500 barrel capacity

MEMBER OF THE MODERN GROUP / CORPORATE OFFICE

Express Mail: 1655 Louisiana, Beaumont, Texas 77701 • Regular Mail: P.O. Box 790, Beaumont, Texas 77704  
(409) 833-2665 • 1-800-231-8198 • FAX (409) 833-3170 • email: sales@modernusa.com



---

## Dragon Products and Industries

---

- Plant Locations: Silsbee and La Porte, Texas

ACCESSORIES:

Pressure/vacuum relief vent, ball float level gauge (installed)

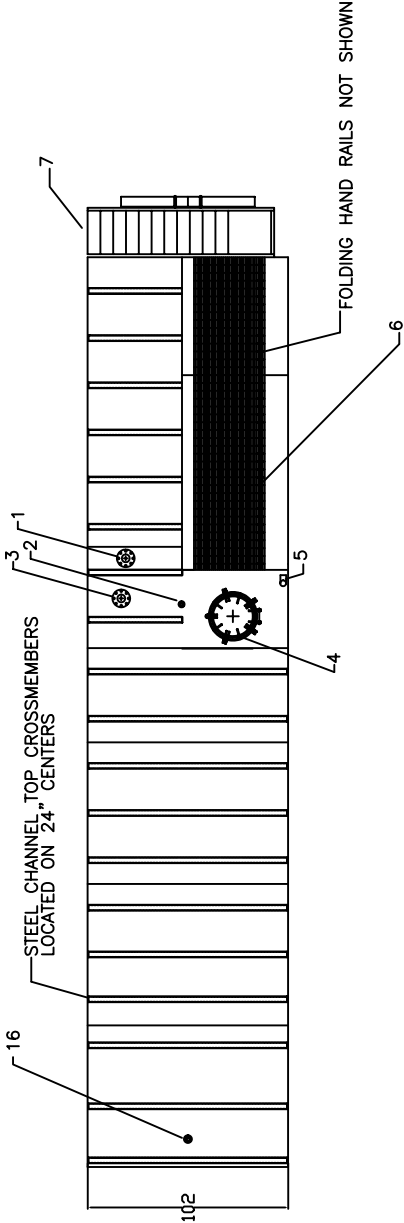
COATINGS:

Steel grit blast inside and out, 100 percent solids epoxy chemical resistant interior lining @ 20 mil DFT, exterior coated with high solids rust inhibiting polyurethane @ 5 mil DFT

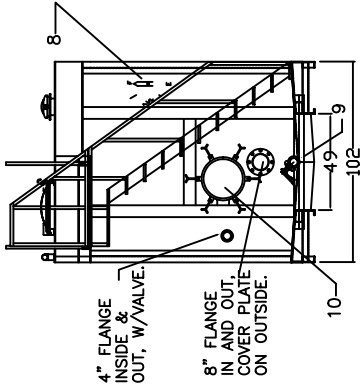
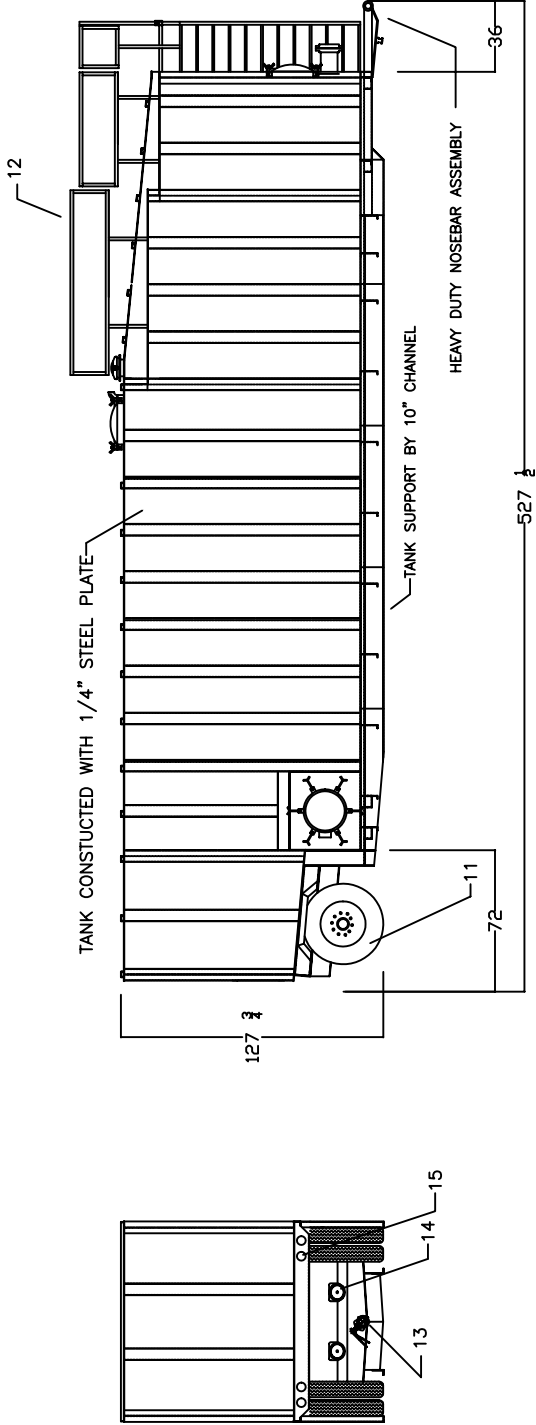
MEMBER OF THE MODERN GROUP / CORPORATE OFFICE

Express Mail: 1655 Louisiana, Beaumont, Texas 77701 • Regular Mail: P.O. Box 790, Beaumont, Texas 77704  
(409) 833-2665 • 1-800-231-8198 • FAX (409) 833-3170 • email: [sales@modernusa.com](mailto:sales@modernusa.com)

CAUTION: THIS LIQUID STORAGE TANK MUST BE EMPTY FOR TRANSPORT



- 1) FLANGE MOUNT BLAYLOCK LL10 P/V VENT
- 2) 160Z PRESSURE, 0.40Z VAC SETTING
- 3) 2" COUPLING W/PLUG
- 4) 4" FLANGE W/BLIND COVER
- 5) 21" MANWAY DOMED LID AND BARS
- 6) 3" ELBOW FILL LINE W/CAP
- 7) SAFETY WALK WAY (36" GRATING)
- 8) ACCESS STAIRS
- 9) LEVEL GAUGE W/8" STAINLESS STEEL BALL
- 10) 1/4" SUPPORT HOLDS BALL 1" MINIMUM OFF FLOOR
- 11) FRONT DRAIN W/VALVE, PLUG, CHAIN
- 12) 21" MANWAY, DOMED LID (2)
- 13) 11.00 X 22.5 TUBLESS TIRE ON 10 HOLE STEEL WHEEL
- 14) FOLDING HAND RAILS
- 15) 4" FLANGE, VALVE, THREADED FLANGE, PLUG, CHAIN
- 16) REMOTE OPERATION HANDLE
- 17) 25K AXLE, AUTOMATIC SLACK ADJUSTERS, TOP MOUNTED
- 18) 30 SERVICE CHAMBERS, OUTBOARD DRUMS, HUTCH
- 19) 9700 SUSPENSION, 3 LEAF HIGH ARCH SPRINGS
- 20) DOT TAIL LIGHTS AND LOWER MARKER LIGHTS, NO TOP LIGHTS
- 21) 4" COUPLING W/PLUG



STANDARD FEATURES:

- 1/4" STEEL PLATE TANK CONSTRUCTION
- SMOOTH INTERIOR WALLS FOR EASIER CLEANING
- V - BOTTOM FLOOR FOR BETTER DRAINAGE
- 3" FILL LINE
- MANWAYS CONVENIENTLY LOCATED ON FRONT, SIDE, REAR AND TOP
- 4" DRAINS AND FRONT INLET/OUTLET
- HEAVY DUTY NOSEBAR ASSEMBLY

- CUSTOM OPTIONS:
- INSIDE WALL COATING (PER CUSTOMER'S SPECIFICATIONS)
  - FITTINGS (PER CUSTOMER'S SPECIFICATIONS)
  - VALVES (PER CUSTOMER'S SPECIFICATIONS)
  - OTHER OPTIONS AVAILABLE ON REQUEST
  - SPECIFIC OR PECULIAR DESIGN MODIFICATIONS ARE WELCOME

PROPERTY OF <b>MODERN MFG., INC.</b> BEAUMONT TEXAS	
SCALE N.T.S.	<b>**SALES**</b>
DATE 11/13/02	DESIGNED BY E.L.W. DWG. BY E.L.W.
500 BARREL LIQUID STORAGE TANK	
SHORT VERSION	DWG NO. 00000186