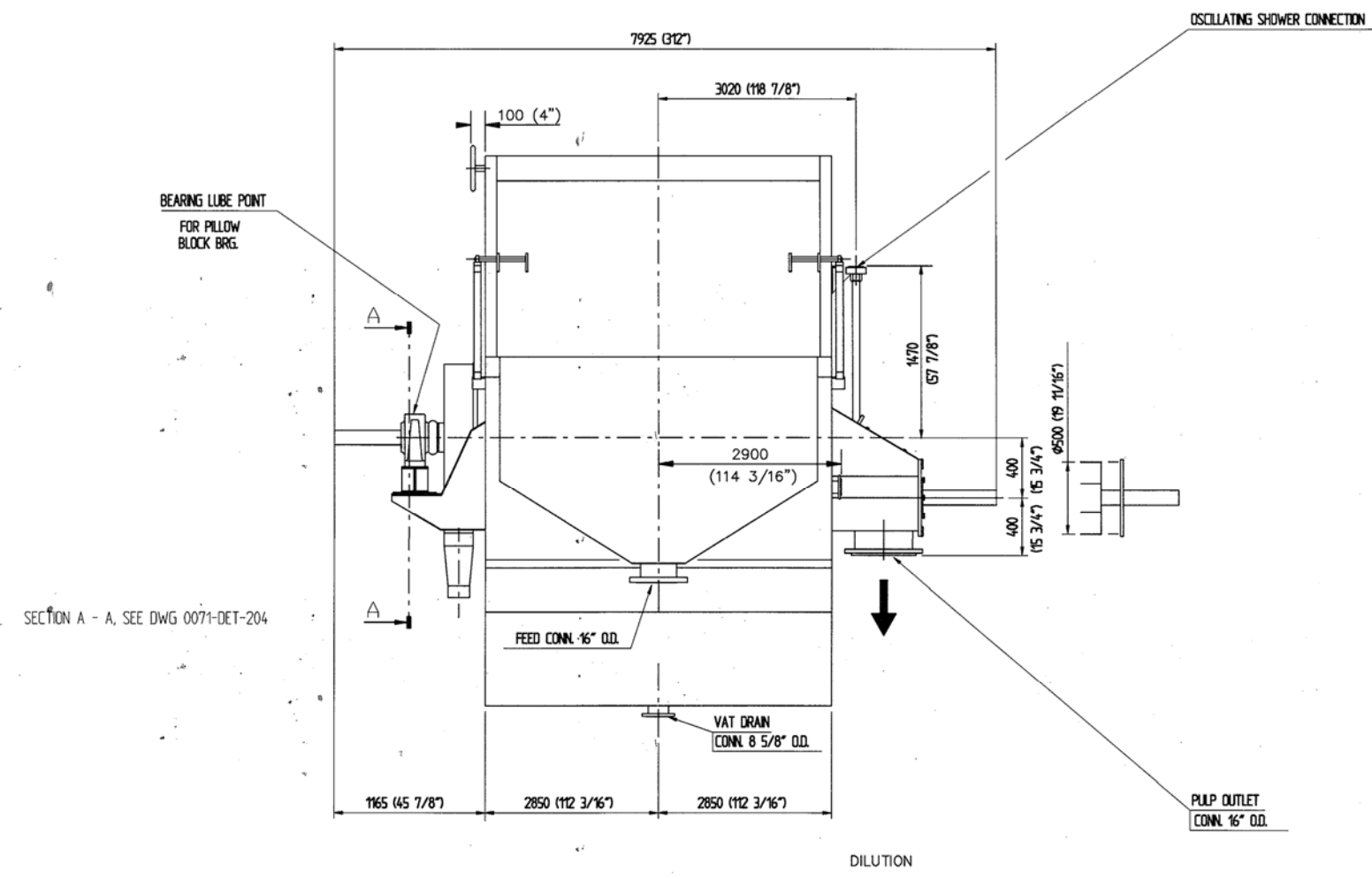
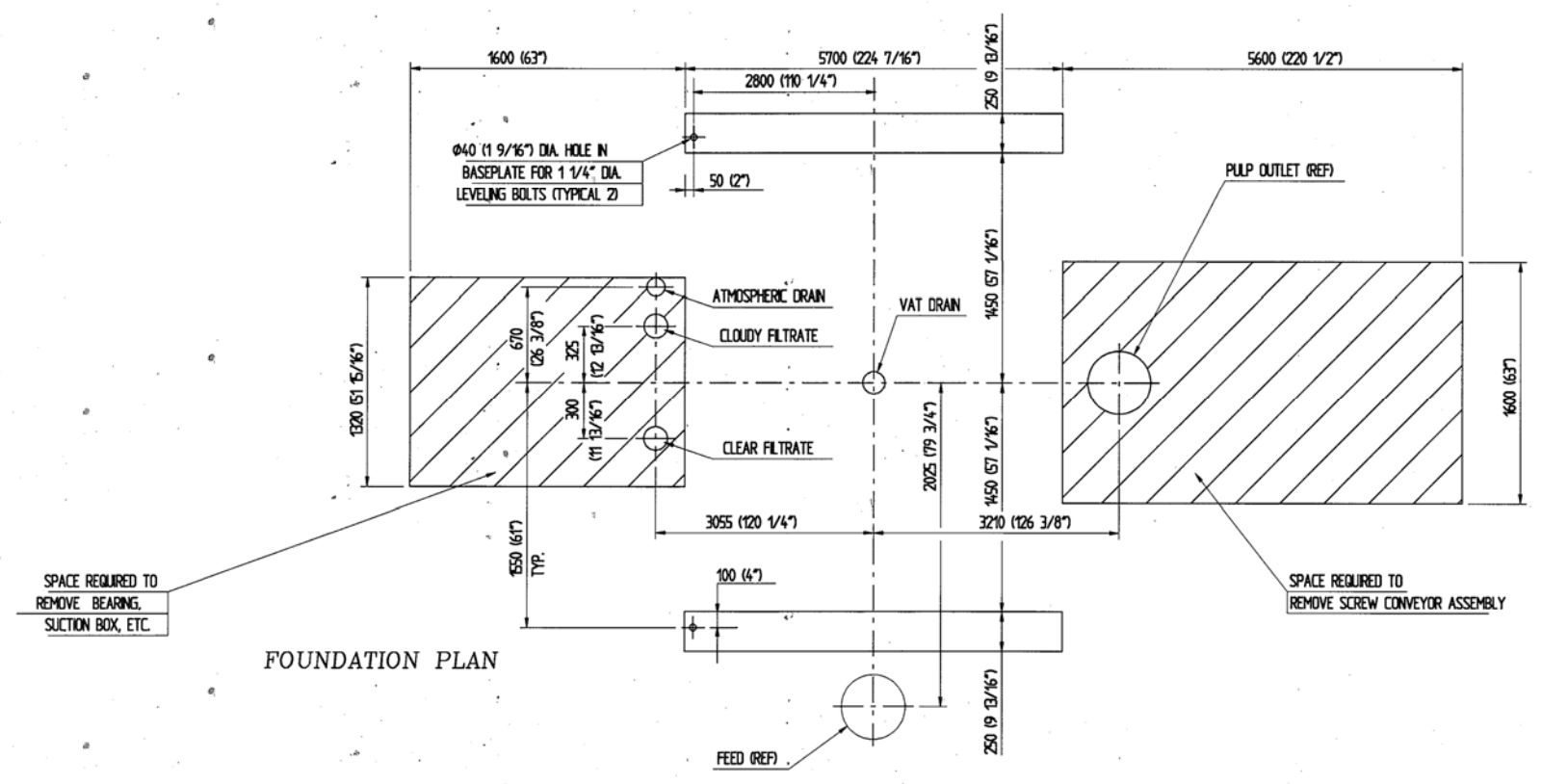


Rev.	Revision	Date	Revised	Approved
0	FOR APPROVAL	4/2/92	R.W.	
1	CERTIFIED	5/13/92	R.W.	<i>[Signature]</i>



NOTES:  
 1) ALL FLANGES ARE TO BE 150 LBS. (VANSTONE TYPE) PER ANSI B16.5.



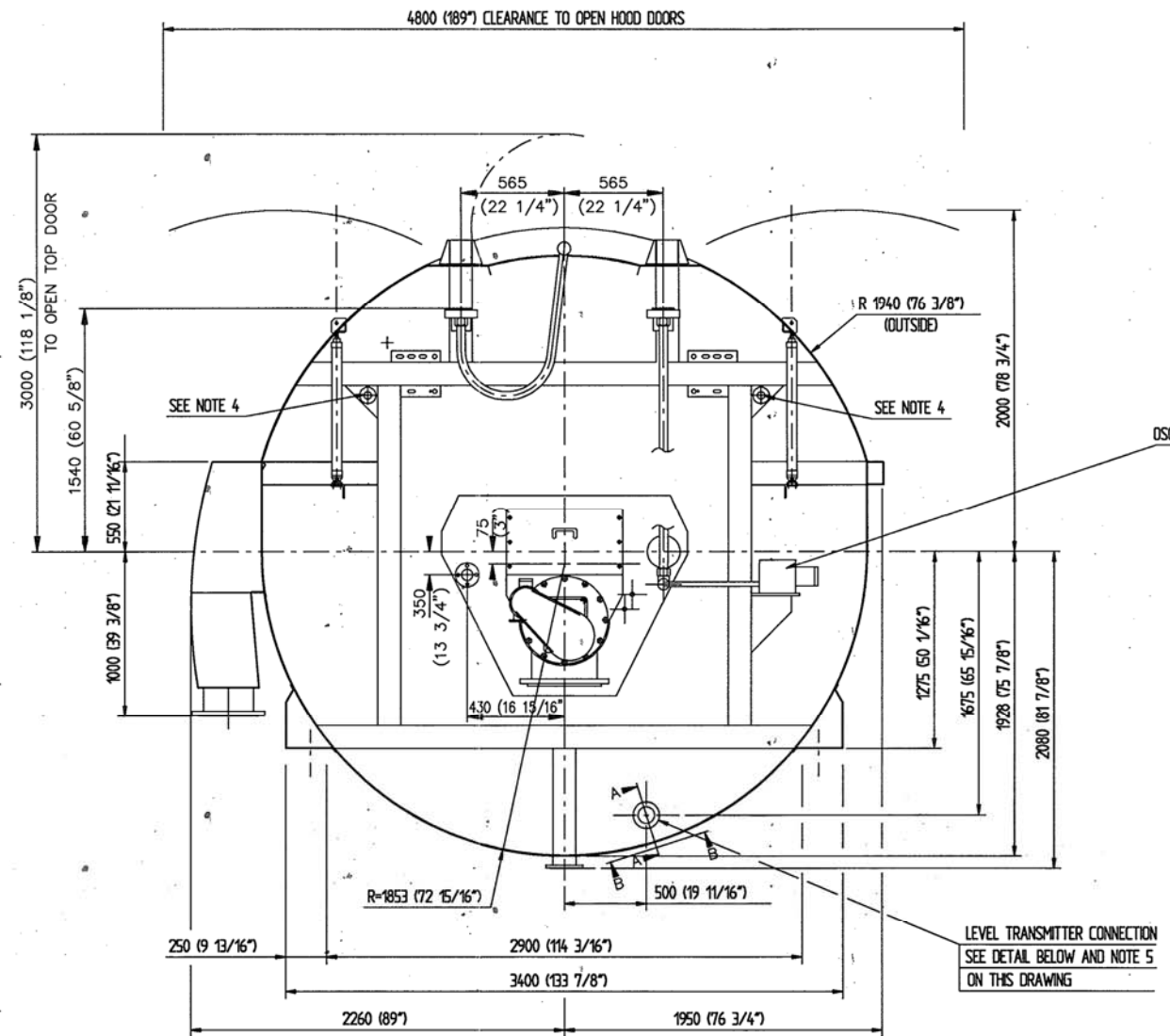
*[Stamp: CERTIFIED]*  
 5/14/92  
*[Signature]*

SCOTT PAPER COMPANY  
 S.D. WARREN DIVISION  
 MOBILE, ALABAMA  
 NO.4 PAPER MACHINE SAVEALL

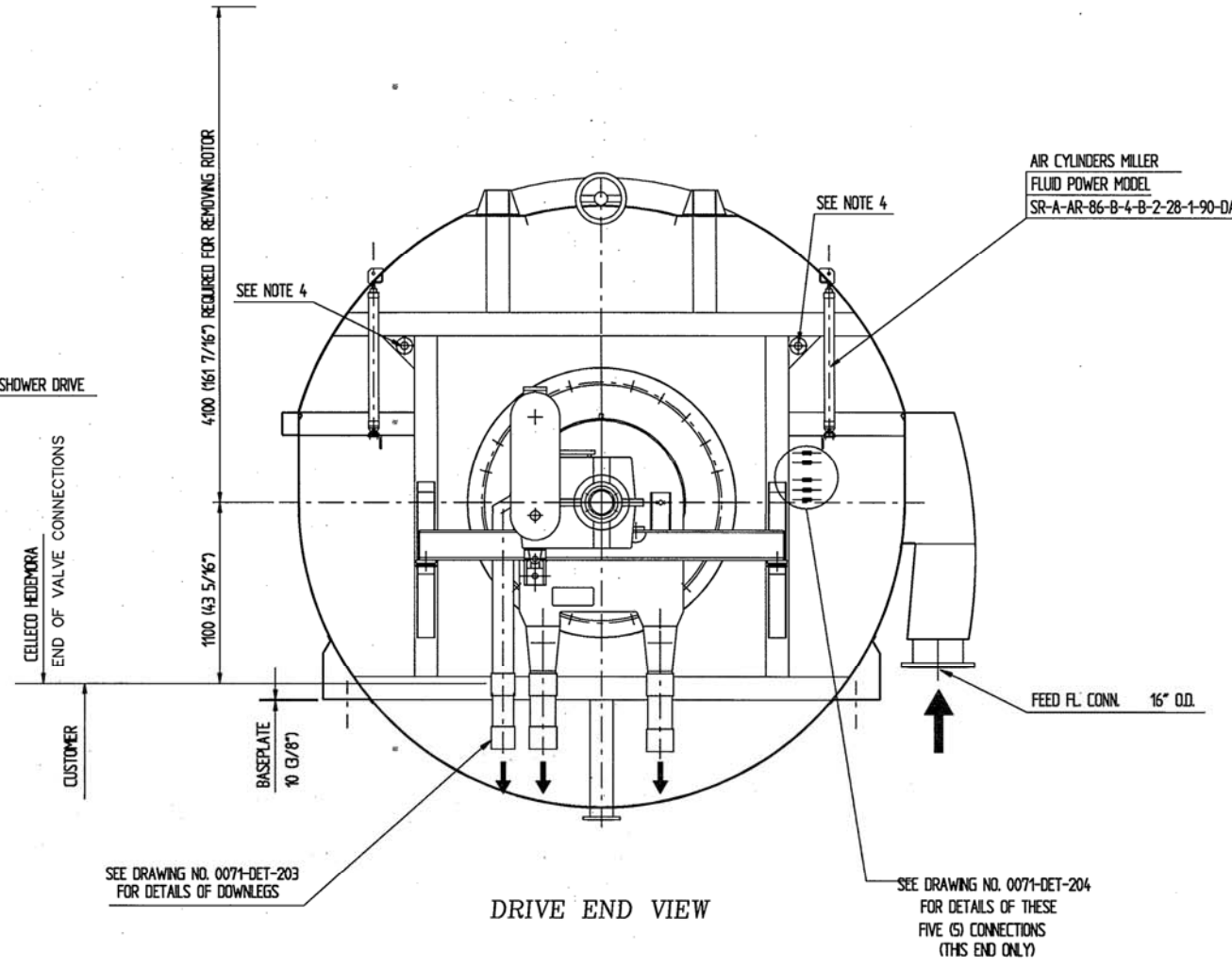
CDP2-A-0071	Equipment No.	Net weight	Operating weight
Order number			
Drawn R.W.	Scale N/A	QTY. ORDERED	
Approved	Date 3/26/92	FILE 0071	
CDP SIDE VIEW		Customer P.O. No. M041331-E-00100	
Model No. 3ML2-16(15)	REF. DWG. NO. SIDE	Drawing No. 0071-CDP-206	REV. 1
Pitch 300			

This document and its contents are the property of Celteco AB and must not be copied, reproduced, transmitted or disclosed to any third party without the consent of Celteco AB. contravention will be prosecuted.

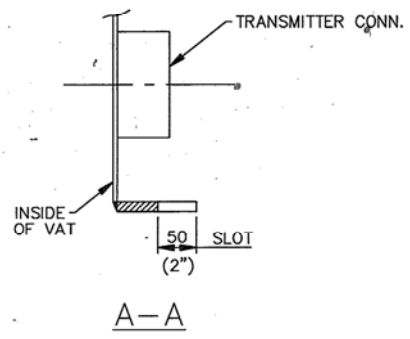
Rev.	Revision	Date	Rev'd	Approved
0	FOR APPROVAL	4/2/92	R.W.	
1	CERTIFIED	5/13/92	R.W.	<i>CJF</i>



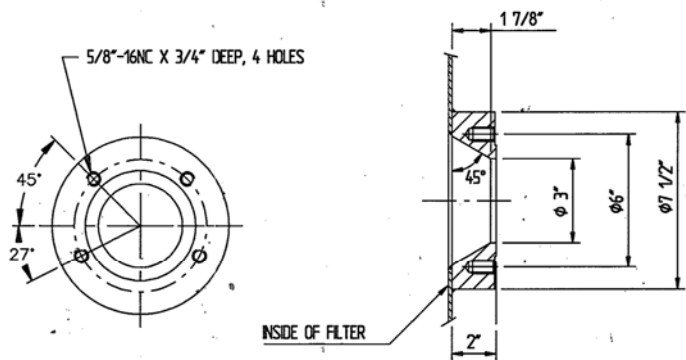
DISCHARGE END VIEW



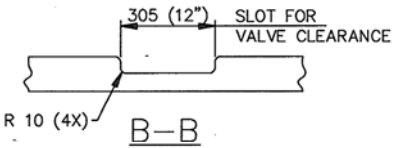
DRIVE END VIEW



LEVEL TRANSMITTER CONNECTION DETAIL



MATERIAL TO BE SAME AS FILTER VAT



NOTES:

- 1- ALL FLANGES ARE ANSI 150 LBS. (VANSTONE TYPE) PER ANSI B165
- 2- THIS CENTERDISC CDP HAS EQUAL LOAD DISTRIBUTION ALONG BOTH BASEPLATES.
- 3- 6" CLEARANCE FROM ROTOR TO BOTTOM OF VAT
- 4- LIFTING POINT. THE ENTIRE ASSEMBLED FILTER CAN BE LIFTED USING THESE POINTS. THE LIFTING HORN IS 1 3/4" DIAMETER AND EXTENDS 4". USE A SPREADER BAR WHEN LIFTING THIS FILTER
- 5- THIS FLANGE IS DESIGNED FOR A DEZURIK 3" FIGURE 850 LEVEL TRANSMITTER ISOLATION VALVE OR EQUAL.

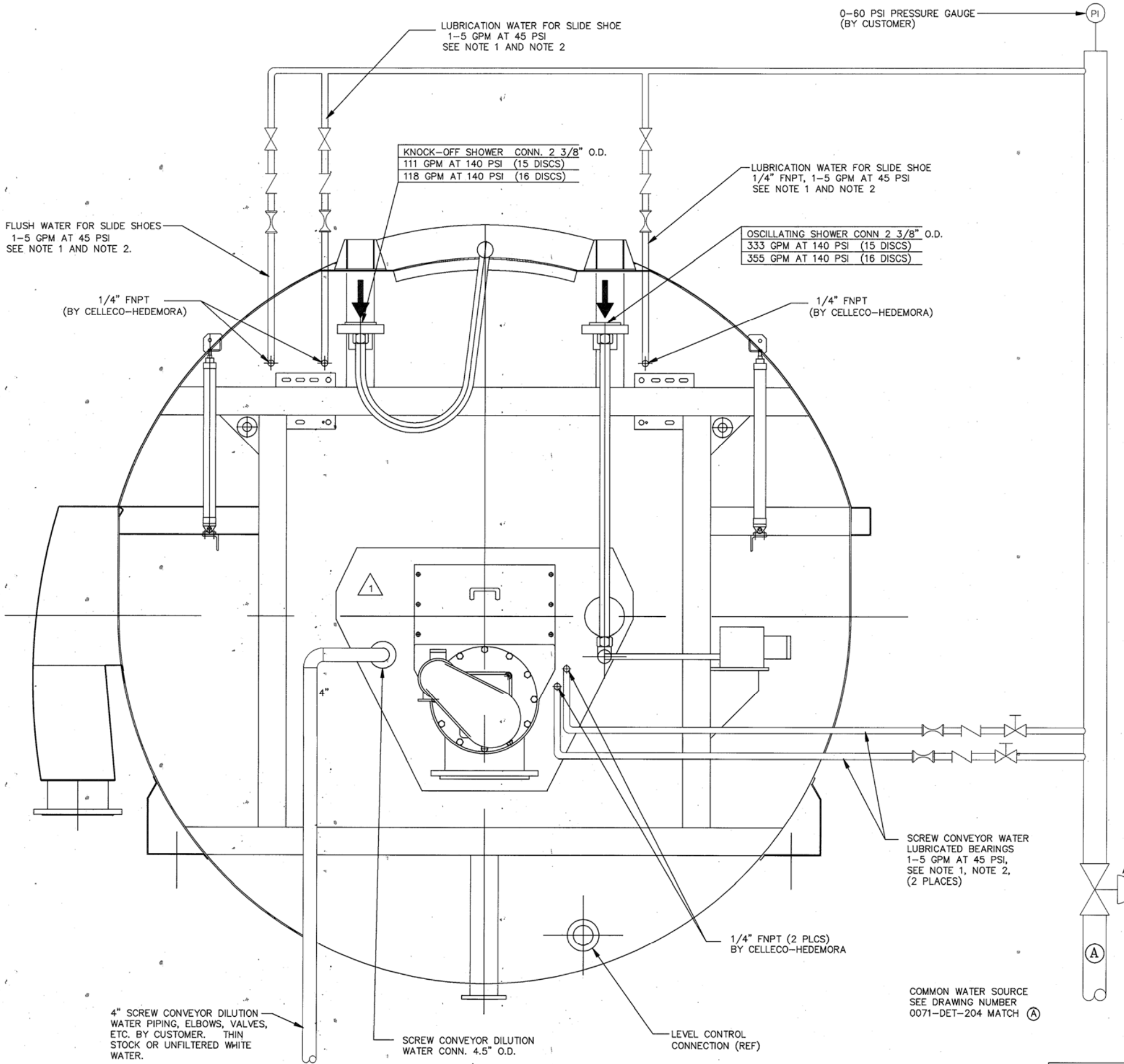
ROTOR DIAMETER 3560 (140 3/16")  
 ROTOR WITHOUT SEGMENTS WEIGHT 7260 LBS  
 SCREW CONVEYOR WEIGHT 2200 LBS  
 FILTER NET WEIGHT 15,400 LBS  
 FILTER OPERATING WEIGHT 104,500 LBS

This document and its contents are the property of Cellego AB and must not be copied, reproduced, transmitted or disclosed to any third party without the consent of Cellego AB. Contravention will be prosecuted.

*5/11/92*  
*Luke Jensen*

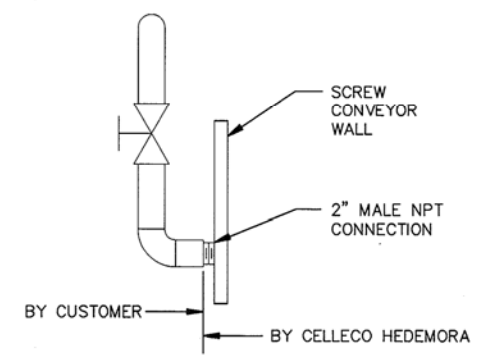
<b>SCOTT PAPER COMPANY</b> <b>S.D. WARREN DIVISION</b> <b>MOBILE, ALABAMA</b> NO.4 PAPER MACHINE SAVEALL			
CDP2-A-0071	Equipment No	Net weight	Operating weight
Order number	Equipment No	Net weight	Operating weight
Drawn R.W.	Scale N/A	QTY. ORDERED	<b>CELLEGO HEDEMORA</b> ATLANTA U.S.A.
Approved	Date 3/26/92	FILE 0071	Customer P.O. No. M041331-E-00100
CDP END ELEVATIONS		Model No. 3ML2-16(15)	
Pitch 300	REF. DWG. NO. END	Drawing No. 0071-CDP-207	REV. 1

Rev.	Revision	Date	Revised	Approved
0	RECOMMENDED DESIGN	4/2/92	R.W.	
1	CHANGED DILUTION CONN.	5/13/92	R.W.	CJZ



NOTES:

- 1) 3/8" BALL VALVE, 3/8" CHECK VALVE, 3/8" FLOW INDICATOR (ROTOMETER RECOMMENDED), 3/8" TUBING FITTINGS, ETC., BY CUSTOMER.
- 2) FILTERED MILL WATER SHALL BE OF THE QUALITY USED FOR PUMP AND AGITATOR GLAND SEAL WATER.
- 3) ALL FLANGES ARE TO BE 150 LBS (VANSTONE TYPE) PER ANSI B11.5



SIDE VIEW OF 4" SCREW CONVEYOR DILUTION PIPING. BY CUSTOMER

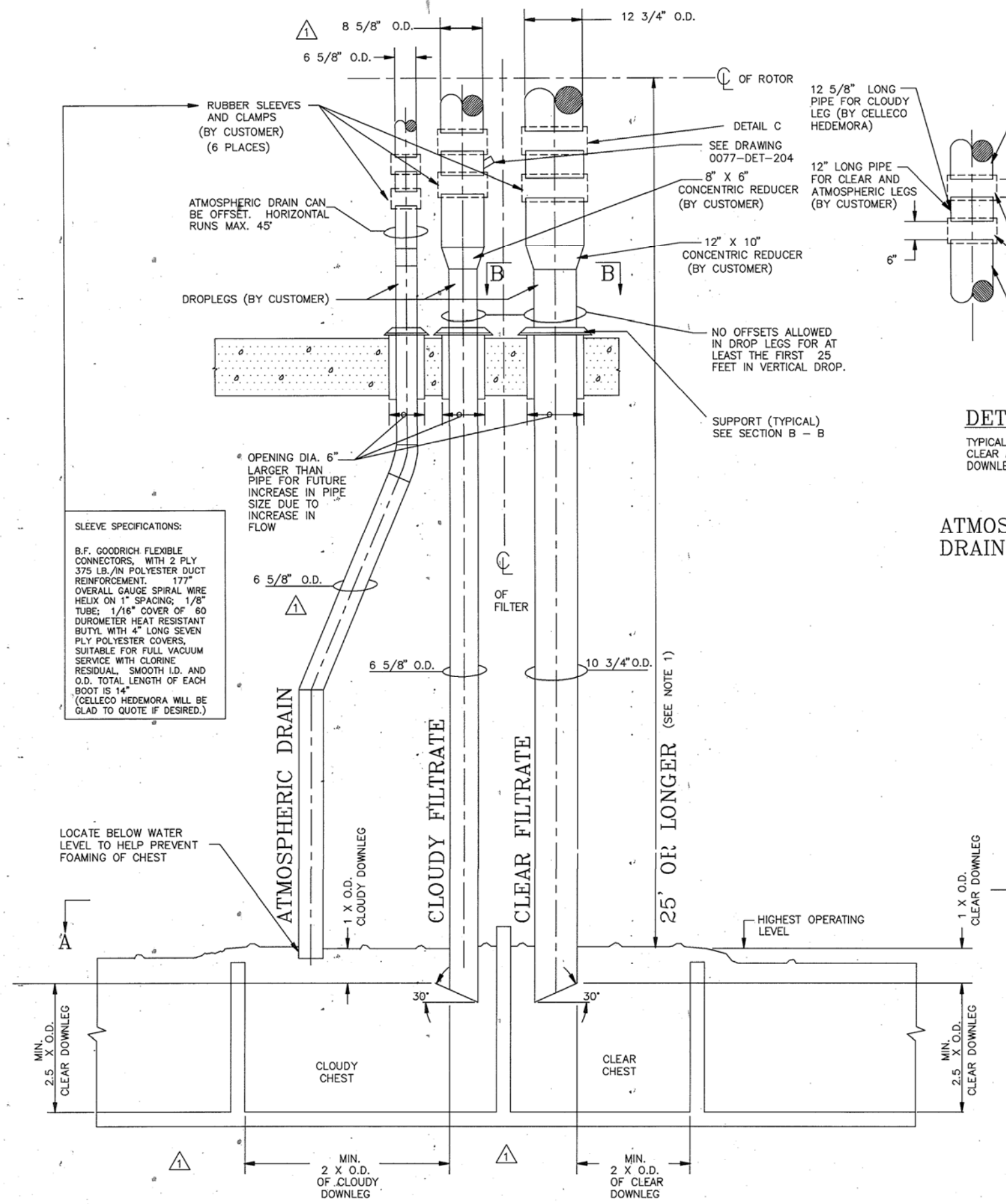
MANUFACTURERS  
RECOMMENDED  
DESIGN  
DATE: 5/4/92  
BY: [Signature]

SCOTT PAPER COMPANY  
S.D. WARREN DIVISION  
MOBILE, ALABAMA  
NO.4 PAPER MACHINE SAVEALL

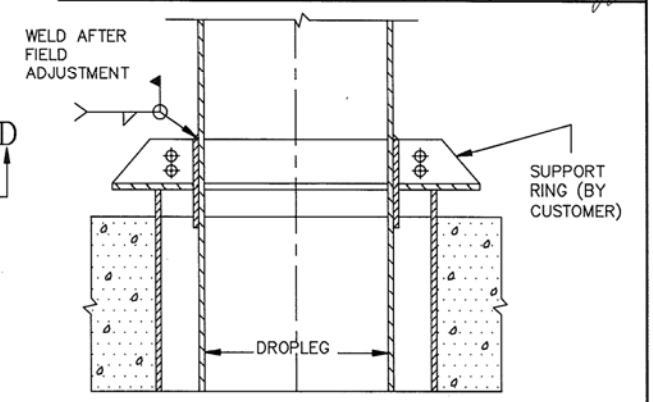
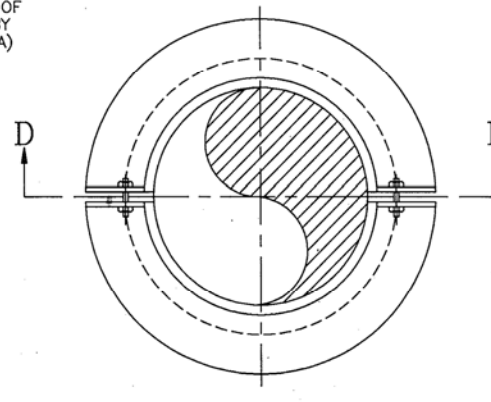
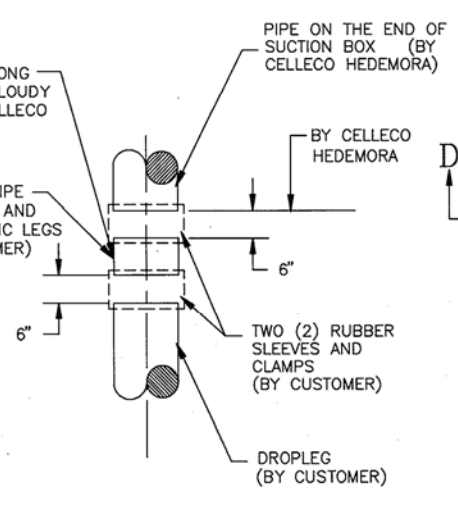
CDP2-A-0071	Order number	Equipment No
R.W.	N/A	QTY. ORDERED
Approved	3/26/92	FILE 0071
CDP HOSE CONNECTIONS		Customer P.O. No. M041331-E-00100
Model No.	3ML2-16(15)	Drawing No.
Pitch	300	REF. DWG. NO. END
		0071-DET-202
		REV. 1

This document and its contents are the property of Cellego AB and must not be copied, reproduced, transmitted or disclosed to any third party without the consent of Cellego AB, contravention will be prosecuted.

Rev.	Revision	Date	Revised	Approved
0	RECOMMENDED DESIGN	4/2/92	R.W.	
1	CHANGED SEAL PIT DESIGN	5/13/92	R.W.	
2	ENGINEERING CHANGES	8/3/92	R.W.	<i>CH</i>



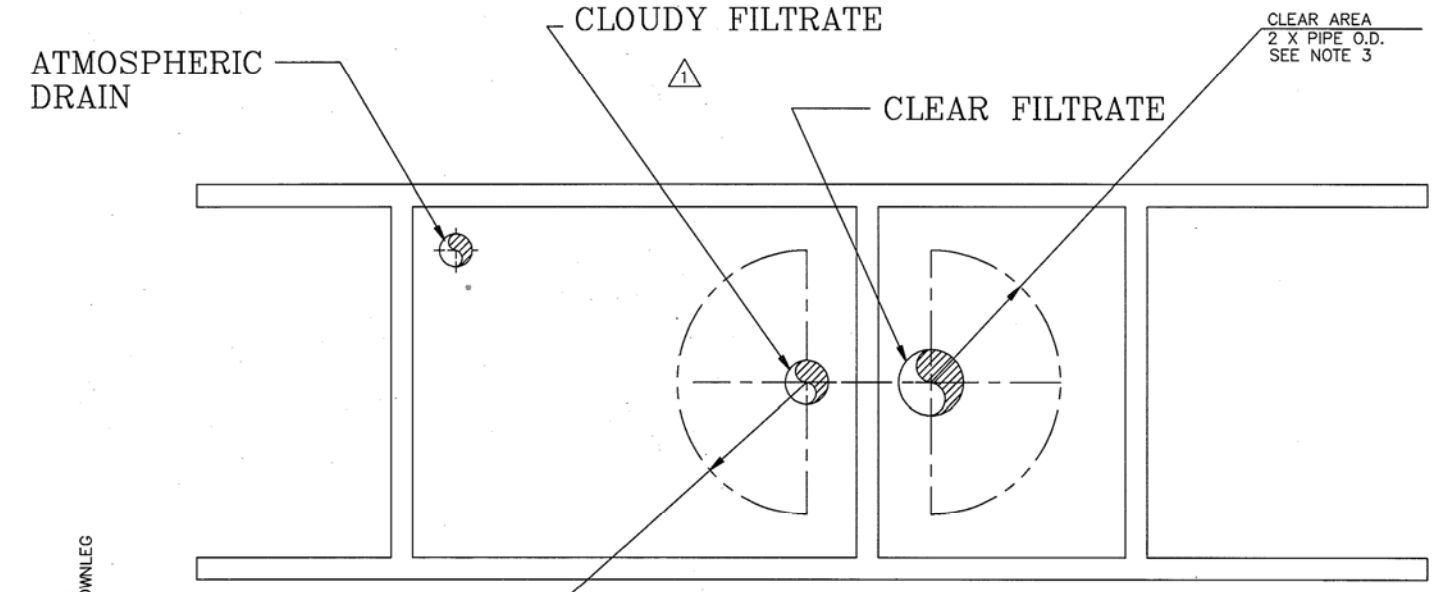
**SLEEVE SPECIFICATIONS:**  
 B.F. GOODRICH FLEXIBLE CONNECTORS, WITH 2 PLY 375 LB./IN POLYESTER DUCT REINFORCEMENT. 177" OVERALL GAUGE SPIRAL WIRE HELIX ON 1" SPACING; 1/8" TUBE; 1/16" COVER OF 60 DUROMETER HEAT RESISTANT BUTYL WITH 4" LONG SEVEN PLY POLYESTER COVERS, SUITABLE FOR FULL VACUUM SERVICE WITH CHLORINE RESIDUAL. SMOOTH I.D. AND O.D. TOTAL LENGTH OF EACH BOOT IS 14" (CELLECO HEDEMORA WILL BE GLAD TO QUOTE IF DESIRED.)



**DETAIL C**  
 TYPICAL ATMOSPHERIC, CLEAR AND CLOUDY DOWNLEGS

**SECTION B - B**  
 TYPICAL ALL 3 DOWNLEGS (DETAIL DESIGN BY CUSTOMER)

**SECTION D - D**  
 (DETAIL DESIGN BY CUSTOMER)



**SECTION A - A**

**NOTES**

1. A STRAIGHT VERTICAL DROP IN CLOUDY AND CLEAR DOWNLEGS IS REQUIRED OR CONTACT CELLECO HEDEMORA FOR RECOMMENDATIONS
2. IF FLUCTUATIONS OF MORE THAN TWO (2) FEET OCCUR IN THE CHESTS, AN ALTERNATE DESIGN WILL HAVE TO BE USED. CONTACT CELLECO HEDEMORA FOR RECOMMENDATIONS.
3. IF CLEAR AREA REQUIREMENT CANNOT BE MET, CONTACT CELLECO HEDEMORA FOR RECOMMENDATIONS.
4. IT IS FELT THAT IT WOULD BE BENEFICIAL TO ALL PARTIES FOR CELLECO HEDEMORA TO REVIEW PIPING DRAWINGS AROUND THE CENTERDISC FILTER. WITHOUT REVIEW OF THE PIPING AND THE INSTRUMENTATION, CELLECO HEDEMORA WILL NOT ASSUME ANY RESPONSIBILITY FOR PERFORMANCE GUARANTEES OR RUNABILITY.

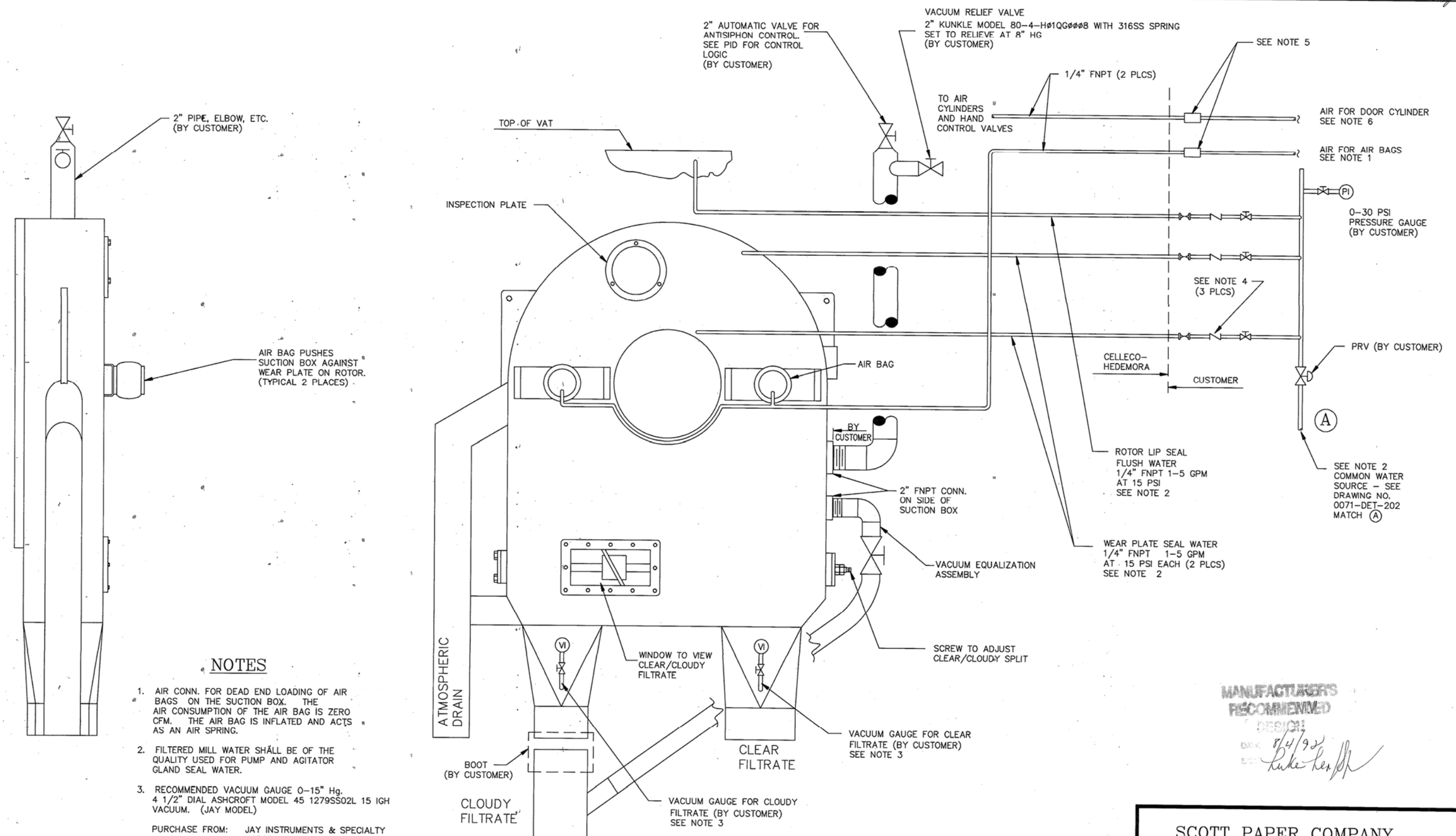
**MANUFACTURERS RECOMMENDED DESIGN**  
 DATE: 8/4/92  
 SIGN: *Luke Haff*

**SCOTT PAPER COMPANY**  
**S.D. WARREN DIVISION**  
**MOBILE, ALABAMA**  
 NO.4 PAPER MACHINE SAVEALL

CDP2-A-0071	Order number	Equipment No	Net weight	Operating weight
R.W.	Scale	N/A	QTY. ORDERED	<b>CELLECO HEDEMORA</b>
Approved	Date	3/26/92	FILE	0071
<b>CDP DROPLEG DETAILS</b>			Customer P.O. No.	
Model No. 3ML2-16(15)			M041331-E-00100	
Pitch 300			REF. DWG. NO.	DROPLEG
			Drawing No.	0071-DET-203
			REV.	2

This document and its contents are the property of Cellico AB and must not be copied, reproduced, transmitted or disclosed to any third party without the consent of Cellico AB. Contravention will be prosecuted.

Rev.	Revision	Date	Revised	Approved
0	RECOMMENDED DESIGN	4/2/92	R.W.	
1	ENGINEERING CHANGES	8/3/92	R.W.	<i>CP</i>



- NOTES**
- AIR CONN. FOR DEAD END LOADING OF AIR BAGS ON THE SUCTION BOX. THE AIR CONSUMPTION OF THE AIR BAG IS ZERO CFM. THE AIR BAG IS INFLATED AND ACTS AS AN AIR SPRING.
  - FILTERED MILL WATER SHALL BE OF THE QUALITY USED FOR PUMP AND AGITATOR GLAND SEAL WATER.
  - RECOMMENDED VACUUM GAUGE 0-15" Hg. 4 1/2" DIAL ASHCROFT MODEL 45 1279SS02L 15 IGH VACUUM. (JAY MODEL)  
PURCHASE FROM: JAY INSTRUMENTS & SPECIALTY NORCROSS, GEORGIA (404) 449-4400  
ATTN: MARY POTTER OR TED WILSON
  - ALTERNATE VACUUM GAUGE IS STANDARD 0-30" Hg VACUUM GAUGE PER CUSTOMER'S SPECIFICATIONS. 1/4" PIPE, ELBOW, BALL VALVE, ETC. BY CUSTOMER.

- NOTES (CONTINUED)**
- SEPARATE FILTER, REGULATOR, LUBRICATOR TO BE SUPPLIED FOR EACH CONNECTION BY CUSTOMER. AIR TO THE AIR BAGS REQUIRE A FILTER AND REGULATOR, BUT NO LUBRICATOR.
  - AIR CONNECTION FOR HOOD DOOR AIR CYLINDERS 60 PSI DESIGN, 90 PSI MAXIMUM AIR CONSUMPTION 150 CFM PER DOOR (2 CYLINDERS) ASSUMING FIVE (5) SECONDS TO OPEN.

MANUFACTURER'S  
RECOMMENDED  
DESIGN  
DATE 8/4/92  
BY Luke Her...

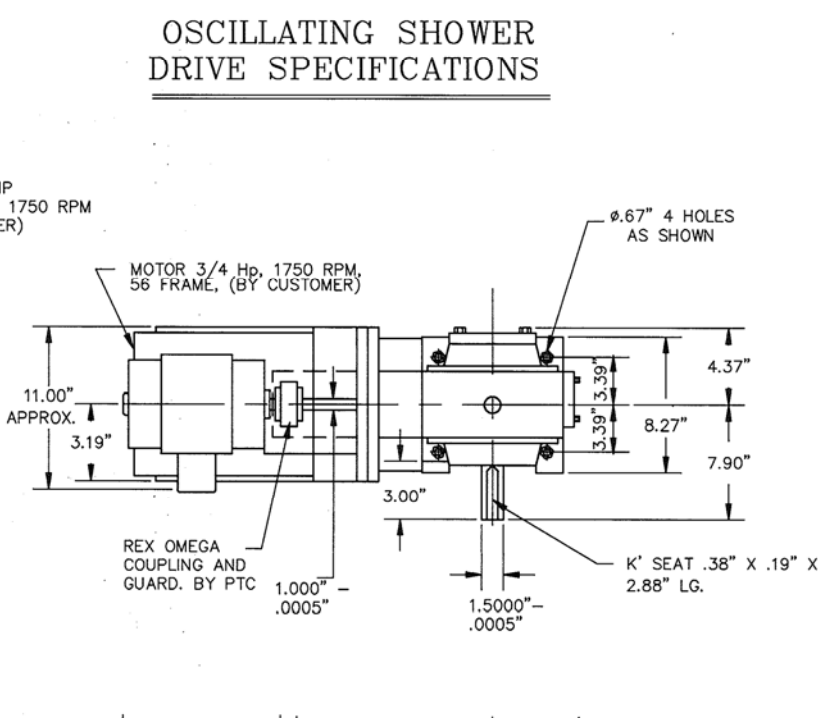
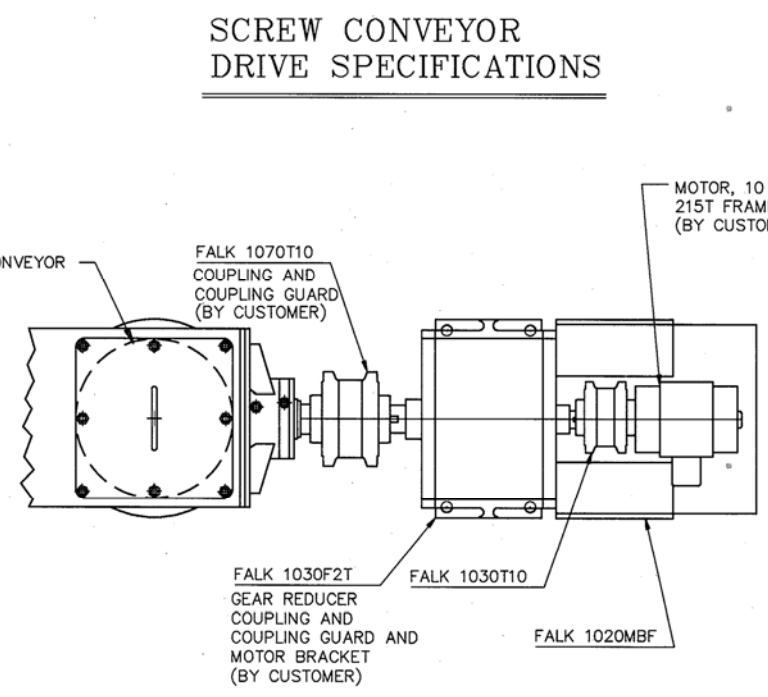
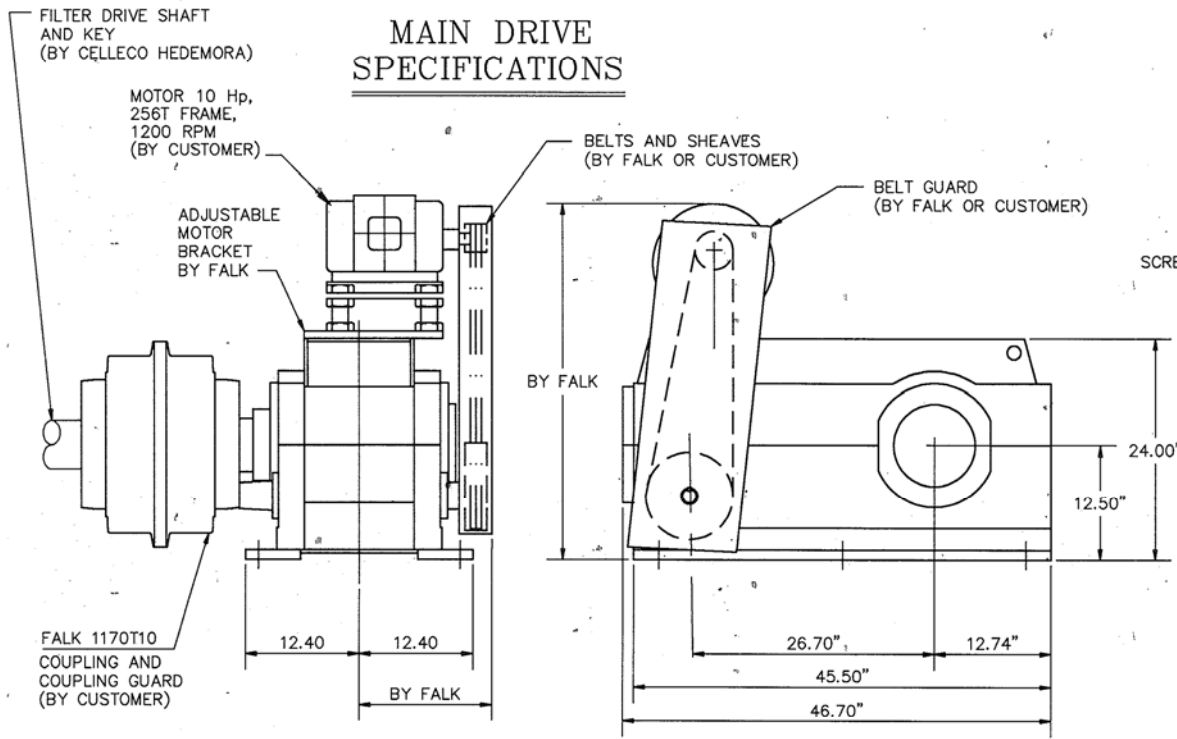
SCOTT PAPER COMPANY  
S.D. WARREN DIVISION  
MOBILE, ALABAMA  
NO.4 PAPER MACHINE SAVEALL

CDP2-A-0071	Order number	Equipment No
Drawn R.W.	Scale N/A	DATE ORDERED
Approved	Date 3/26/92	FILE 0071
CDP SUCTION BOX		Customer P.O. No. M041331-E-00100
Model No. 3ML2-16(15)	Drawing No.	REV. 1
Pitch 300	REF. DWG. NO. SUCTION	0071-DET-204

ALFA-LAVAL  
CELLECO HEDEMORA  
ATLANTA U.S.A.

This document and its contents are the property of Cellego AB and must not be copied, reproduced, transmitted or disclosed to any third party without the consent of Cellego AB. Construction will be prosecuted.

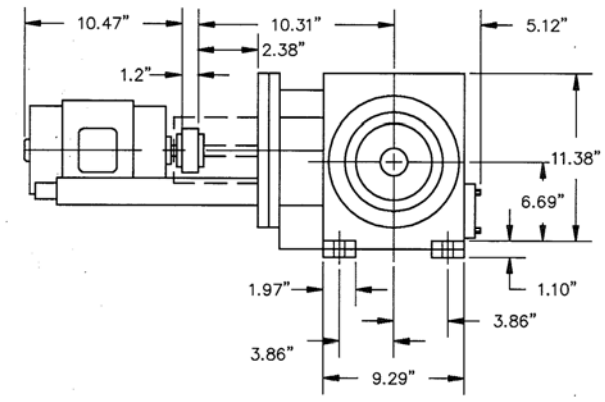
Rev.	Revision	Date	Revised	Approved
0	RECOMMENDED DESIGN	4/2/92	R.W.	



**REDUCER**

MANUFACTURER	FALK CORPORATION
DRIVE SIZE	425A4
ASSEMBLY	19
EXACT RATIO	340.9:1
MAXIMUM INPUT RPM TO REDUCER	692
MAXIMUM OUTPUT RPM FROM REDUCER	2.00 (APPROX.)
THERMAL HP CAPACITY	GREATER THAN MECHANICAL HP
MINIMUM SERVICE FACTOR	1.5 (BASED ON REQUIRED TORQUE)
OUTPUT TORQUE	338000 INCH-POUNDS
MAXIMUM HORSEPOWER CAPACITY	16.8 (692 RPM INPUT)
SHEAVE RATIO	2.6:1 (APPROX.)*
MOTOR SHEAVE SIZE	BY FALK AT A LATER DATE
MOTOR SHEAVE BUSHING AND BORE	BY FALK AT A LATER DATE
REDUCER SHEAVE SIZE	BY FALK AT A LATER DATE
REDUCER SHEAVE BUSHING AND BORE	BY FALK AT A LATER DATE
VEE-BELT SIZE	BY FALK AT A LATER DATE
DRIVE ASSEMBLY WEIGHT	BY FALK AT A LATER DATE
OIL CAPACITY	BY FALK AT A LATER DATE
BORE OF COUPLING ON REDUCER OUTPUT SHAFT	5.75 INCHES
BORE OF COUPLING ON FILTER DRIVE SHAFT	INFO. AT A LATER DATE

MANUFACTURER	FALK CORPORATION
DRIVE SIZE	1030 FZ2
ASSEMBLY	
EXACT RATIO	6.283:1
INPUT RPM TO REDUCER	1750 RPM
THERMAL HP CAPACITY	MORE THAN 15.9
MINIMUM SERVICE FACTOR	1.5
OUTPUT TORQUE	4400 INCH-POUNDS
MAXIMUM HP CAPACITY	15.9
REDUCER WEIGHT	185 POUNDS (REDUCER, COUPLING, BRACKET, WITHOUT MOTOR)
OIL CAPACITY	INFO. AT A LATER DATE
BORE OF COUPLING ON REDUCER OUTPUT SHAFT	1.75 INCHES
BORE OF COUPLING ON SCREW CONVEYOR SHAFT	INFO. AT A LATER DATE



MANUFACTURER	PT COMPONENTS, INC.
DRIVE SIZE	MWH085
ASSEMBLY	2B
ACTUAL RATIO	223.1:1
INPUT RPM TO REDUCER	1750
MINIMUM SERVICE FACTOR	2
OUTPUT TORQUE	4959 INCH-POUNDS
MAXIMUM HP CAPACITY	0.94
DRIVE WEIGHT	120 POUNDS (WITHOUT MOTOR)
OIL CAPACITY	2 QUARTS

**VARIABLE SPEED DRIVE**

THE MAXIMUM RPM OF THE FILTER IS 2.0 AND THE MINIMUM RPM IS 0.3. TO OBTAIN THIS, THE MOTOR WILL BE CONTROLLED BY A VARIABLE FREQUENCY A-C DRIVE SUPPLIED BY THE CUSTOMER. IT IS ASSUMED THAT THE MAXIMUM MOTOR SPEED WILL BE 1800 RPM AND THE MINIMUM MOTOR SPEED IS 300 RPM.

THE MAIN DRIVE MOTOR, OSCILLATING SHOWER DRIVE MOTOR AND SCREW CONVEYOR DRIVE MOTOR ARE SUPPLIED BY THE CUSTOMER.

THIS MACHINE IS A CONSTANT TORQUE, VARIABLE HORSEPOWER UNIT. THE ELECTRONIC VARIABLE SPEED DRIVE SHOULD BE DESIGNED FOR THE APPLICATION.

This document and its contents are the property of Cellico AB and must not be copied, reproduced, transmitted or disclosed to any third party without the consent of Cellico AB. Contravention will be prosecuted.

SCOTT PAPER COMPANY  
S.D. WARREN DIVISION  
MOBILE, ALABAMA  
NO.4 PAPER MACHINE SAVEALL

CDP2-A-0071

Order number	Equipment No
Drawn R.W.	Scale N/A
Approved	QTY. ORDERED
Date 3/26/92	FILE 0071

CELLECO HEDEMORA  
ATLANTA U.S.A.

Customer P.O. No. M041331-E-00100

CDP DRIVE  
Model No. 3ML2-16(15)  
Pitch 300

REF. DWG. NO.  
0071-DET-205

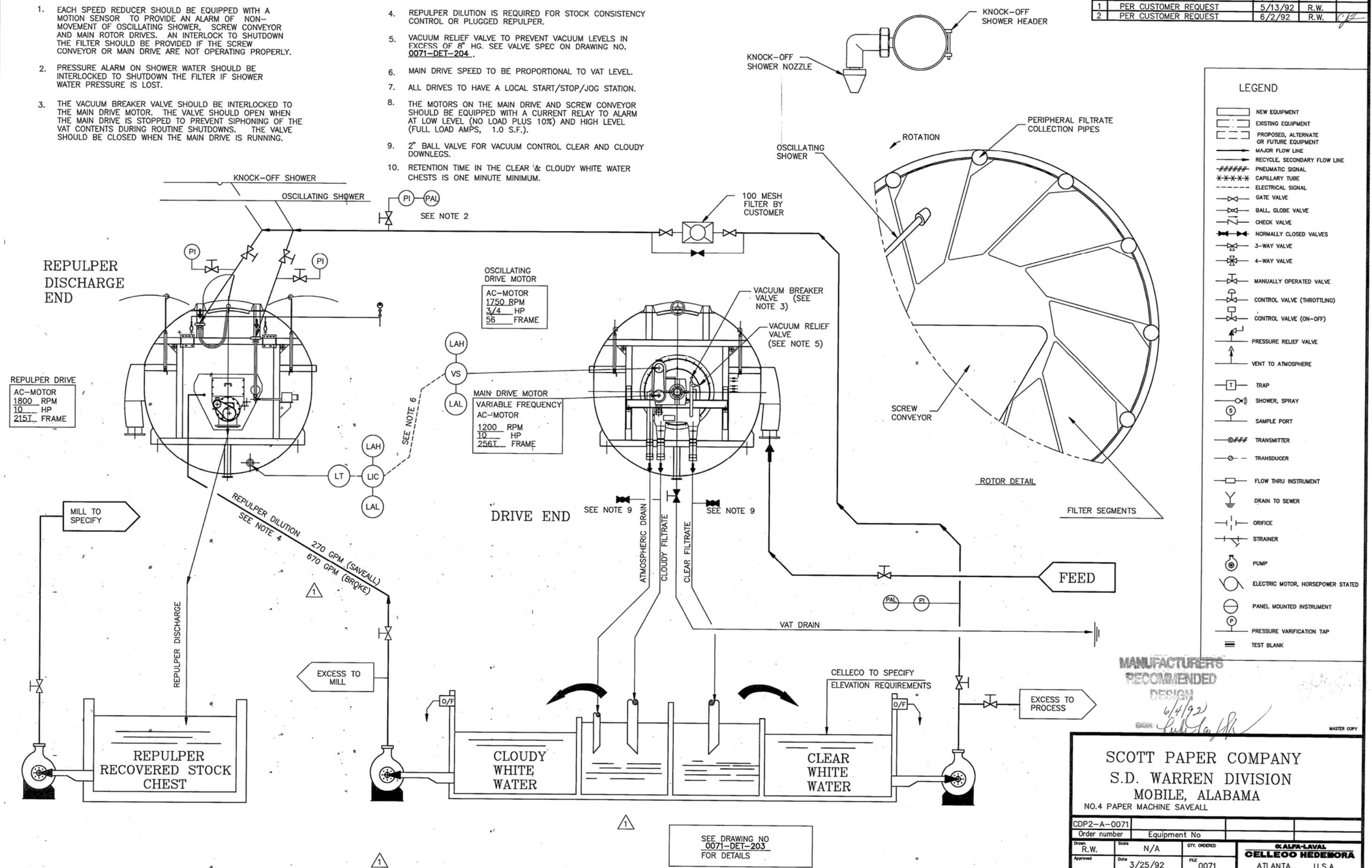
REV. 0



**NOTES**

- EACH SPEED REDUCER SHOULD BE EQUIPPED WITH A MOTION SENSOR TO PROVIDE AN ALARM OF NON-MOVEMENT OF OSCILLATING SHOWER, SCREW CONVEYOR AND MAIN ROTOR DRIVES. AN INTERLOCK TO SHUTDOWN THE FILTER SHOULD BE PROVIDED IF THE SCREW CONVEYOR OR MAIN DRIVE ARE NOT OPERATING PROPERLY.
- PRESSURE ALARM ON SHOWER WATER SHOULD BE INTERLOCKED TO SHUTDOWN THE FILTER IF SHOWER WATER PRESSURE IS LOST.
- THE VACUUM BREAKER VALVE SHOULD BE INTERLOCKED TO THE MAIN DRIVE MOTOR. THE VALVE SHOULD OPEN WHEN THE MAIN DRIVE IS STOPPED TO PREVENT SIPHONING OF THE VAT CONTENTS DURING ROUTINE SHUTDOWNS. THE VALVE SHOULD BE CLOSED WHEN THE MAIN DRIVE IS RUNNING.
- REPULPER DILUTION IS REQUIRED FOR STOCK CONSISTENCY CONTROL OR PLUGGED REPULPER.
- VACUUM RELIEF VALVE TO PREVENT VACUUM LEVELS IN EXCESS OF 8" HG. SEE VALVE SPEC ON DRAWING NO. 0071-DET-204.
- MAIN DRIVE SPEED TO BE PROPORTIONAL TO VAT LEVEL.
- ALL DRIVES TO HAVE A LOCAL START/STOP/JOG STATION.
- THE MOTORS ON THE MAIN DRIVE AND SCREW CONVEYOR SHOULD BE EQUIPPED WITH A CURRENT RELAY TO ALARM AT LOW LEVEL (NO LOAD PLUS 10%) AND HIGH LEVEL (FULL LOAD AMPS, 1.0 S.F.).
- 2" BALL VALVE FOR VACUUM CONTROL CLEAR AND CLOUDY DOWNLEGS.
- RETENTION TIME IN THE CLEAR & CLOUDY WHITE WATER CHESTS IS ONE MINUTE MINIMUM.

Rev.	Revision	Date	Revised	Approved
0	RECOMMENDED DESIGN	4/2/92	R.W.	
1	PER CUSTOMER REQUEST	5/13/92	R.W.	
2	PER CUSTOMER REQUEST	6/2/92	R.W.	



REPULPER DISCHARGE END

REPULPER DRIVE  
AC-MOTOR  
1800 RPM  
10 HP  
215T FRAME

OSCILLATING DRIVE MOTOR  
AC-MOTOR  
1750 RPM  
3/4 HP  
56 FRAME

MAIN DRIVE MOTOR  
VARIABLE FREQUENCY  
AC-MOTOR  
1200 RPM  
10 HP  
256T FRAME

MANUFACTURER'S  
RECOMMENDED  
DESIGN

6/4/92  
SIGN: [Signature]

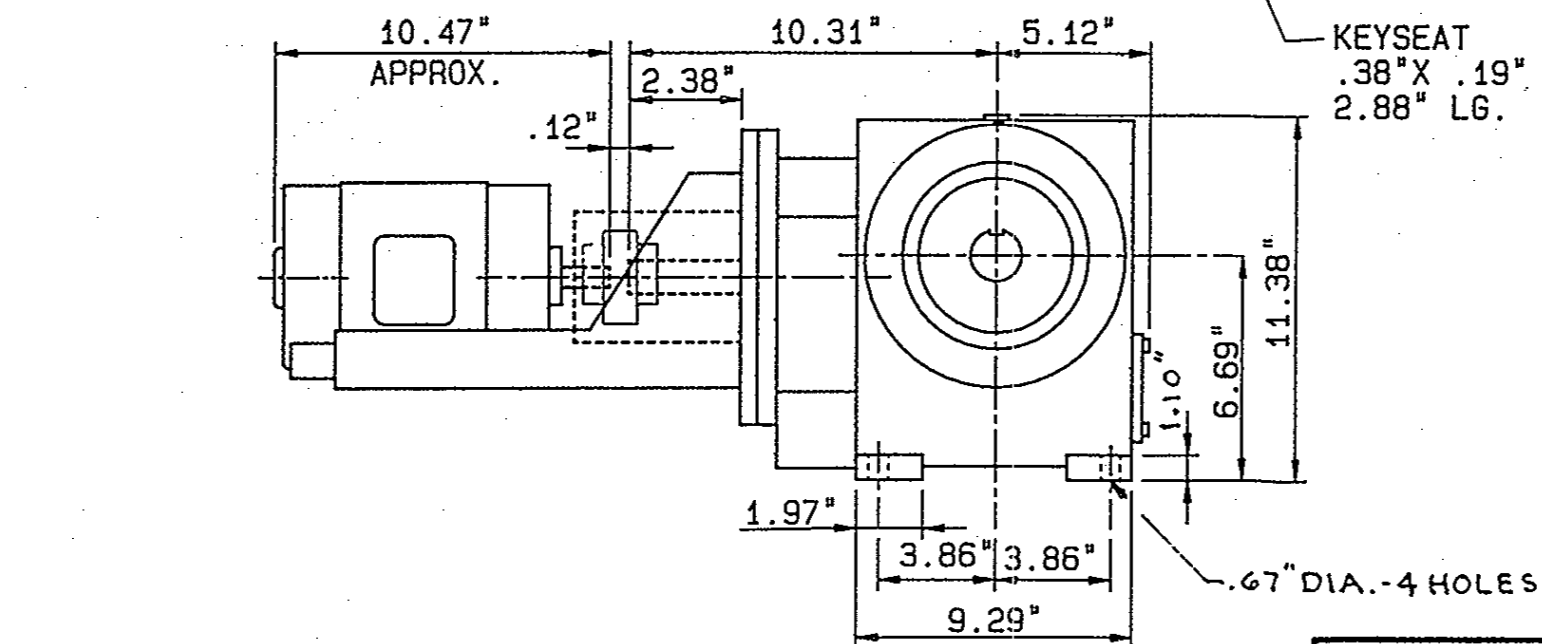
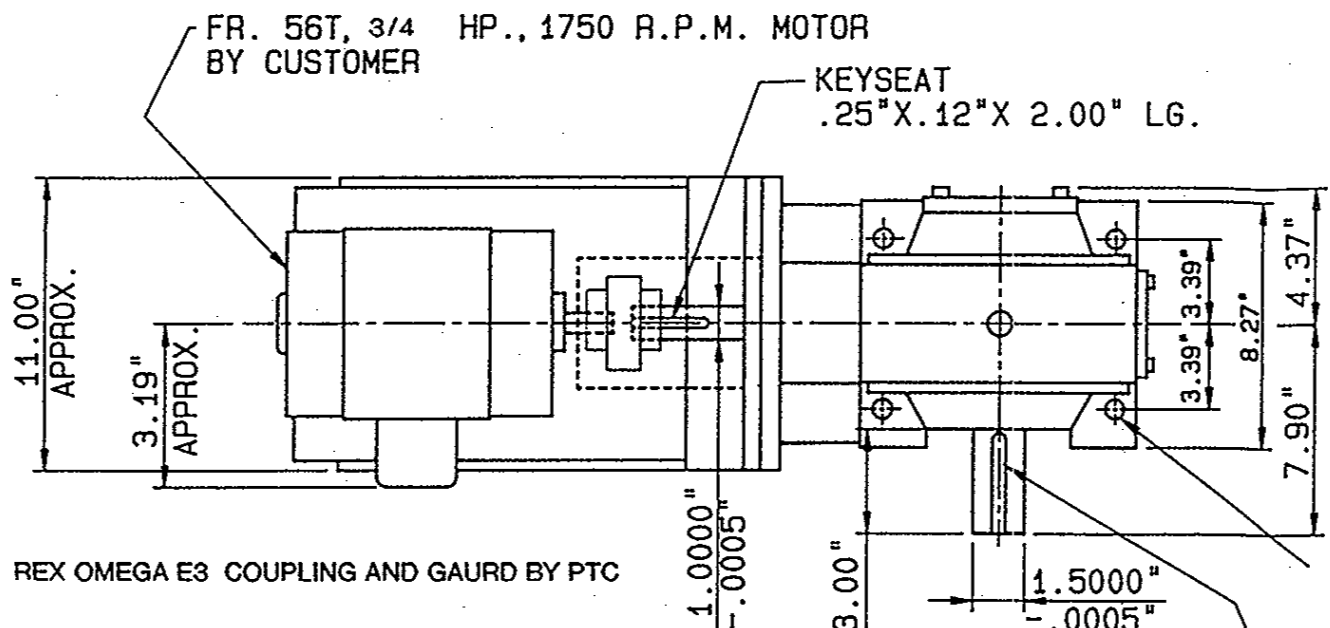
SCOTT PAPER COMPANY  
S.D. WARREN DIVISION  
MOBILE, ALABAMA  
NO.4 PAPER MACHINE SAVEALL

CDP2-A-0071	Order number	Equipment No.	QTY. ORDERED	ALFA-LAVAL CELLECO HEDEMORA
Drawn: R.W.	Scale: N/A	DATE: 3/25/92	FILE: 0071	ATLANTA U.S.A.
Approved:				Customer P.O. No. M041331-E-00100
Model No. 3ML2-16(15)	Pitch 300	REF. DWG. NO. PID	Drawing No. 0071-PID-201	REV. 2

PROCESS DESIGN: 327.8 BDSTPD/4968 USGPM/1.10%/120F/300 CSF (BROKE)  
133.1 BDSTPD/3559 USGPM/0.62%/120F/240 CSF (SAVEALL)

SEE DRAWING NO  
0071-DET-203  
FOR DETAILS

This document and its contents are the property of Celloco AB and must not be copied, reproduced, transmitted or disclosed to any third party without the consent of Celloco AB, otherwise it will be prosecuted.



IDENTIFICATION		MATERIAL LIST				
GROUP	PIECE	QUAN.	SPECIFICATION		REFERENCE	SYM BOL
			DWG OR PART NO.	NAME, DESCRIPTION, MATERIAL		

CERTIFIED CORRECT FOR CELLECO HEDEMORA CUST. ORDER 0200071-A-5643  
 SIZE MWH085 ASSY 1B EXACT RATIO 223.1 INPUT RPM 1750 OUTPUT RPM 7.8  
 INPUT HP .94 SERVICE FACTOR 1.0 OUTPUT TORQUE (LB. IN.) 4959

CERTIFIED BY R. W. GREENLEAF DATE 9-6-90  
 CUSTOMER APPROVAL: BY \_\_\_\_\_ DATE \_\_\_\_\_

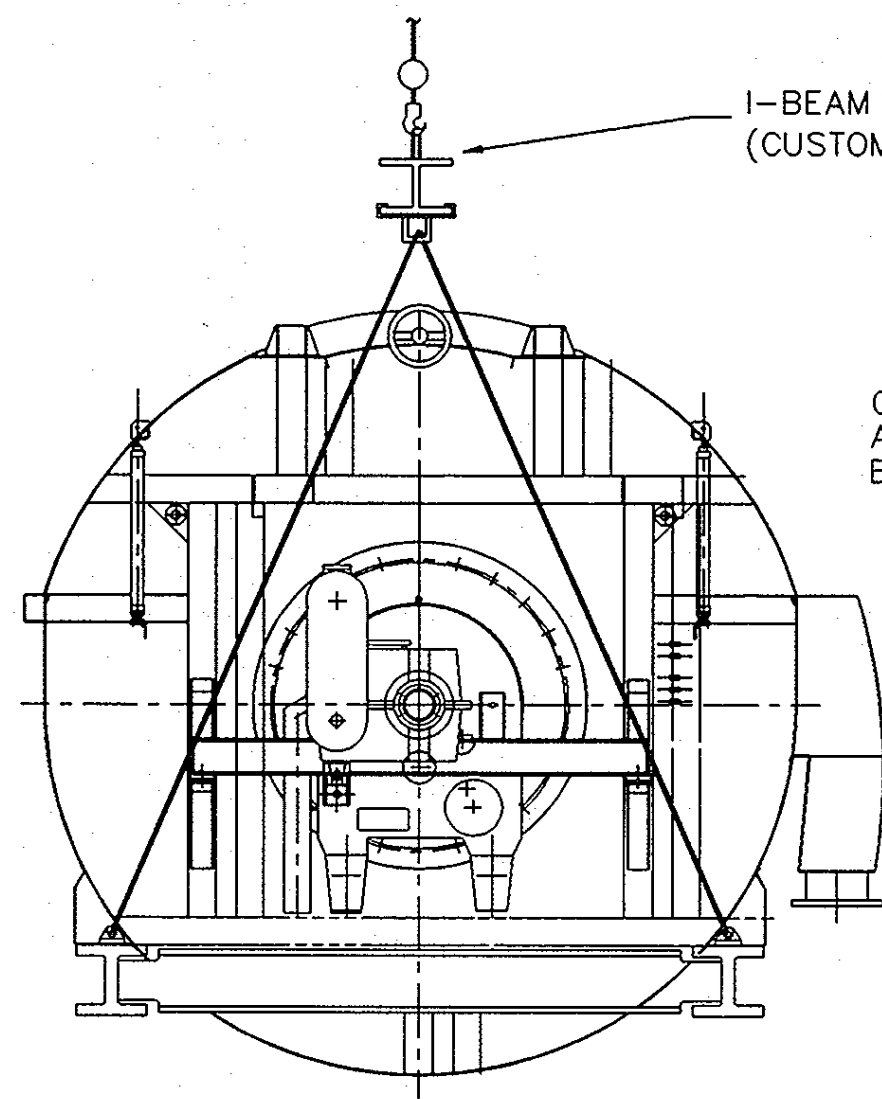
SCOTT PAPER  
 MOBILE, AL  
 CDP2-A-0071

DECIMAL DIMENSION TOLERANCES EXCEPT AS SPECIFIED							X	X	X	
2 PL	3 PL	4 PL	CSTG.	WLDT.	ANG.	FIN.				
TITLE										
CERTIFIED DIMENSIONS										
MWH085XB1B0056225										
L-B DR. DIV. ORDER# 252220							REV.	DATE	DESCRIPTION OF REVISION	
THIS DRAWING IS THE PROPERTY OF REXNORD CORPORATION AND TRANSMITTED IN CONFIDENCE. AND THE REPRODUCTION, USE, OR DISCLOSURE, IN WHOLE OR IN PART, OF THE DESIGN AND DETAILS CONTAINED HEREIN IS PROHIBITED WITHOUT THE WRITTEN PERMISSION OF REXNORD CORPORATION										
DRAWN R. GREENLEAF		CHECKED NEWTON		APPROVED KURTZ		REFERENCE				
DATE 9-6-90		SCALE 1/2		Rexnord Corporation Link-Belt Drive Division				<h1>7789X397</h1>		

133341

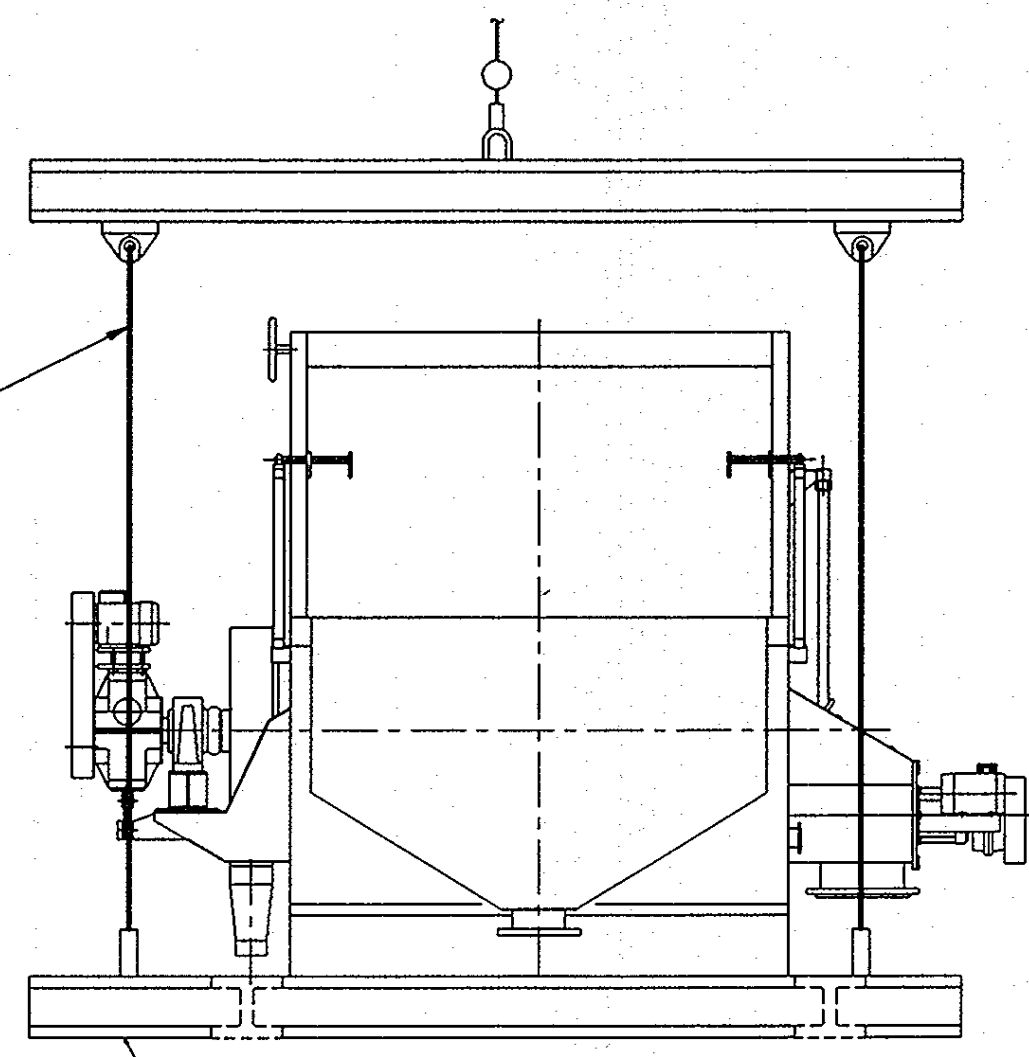






I-BEAM SPREADER BAR  
(CUSTOMER SUPPLY)

CABLES SIZED  
AND PROVIDED  
BY CUSTOMER



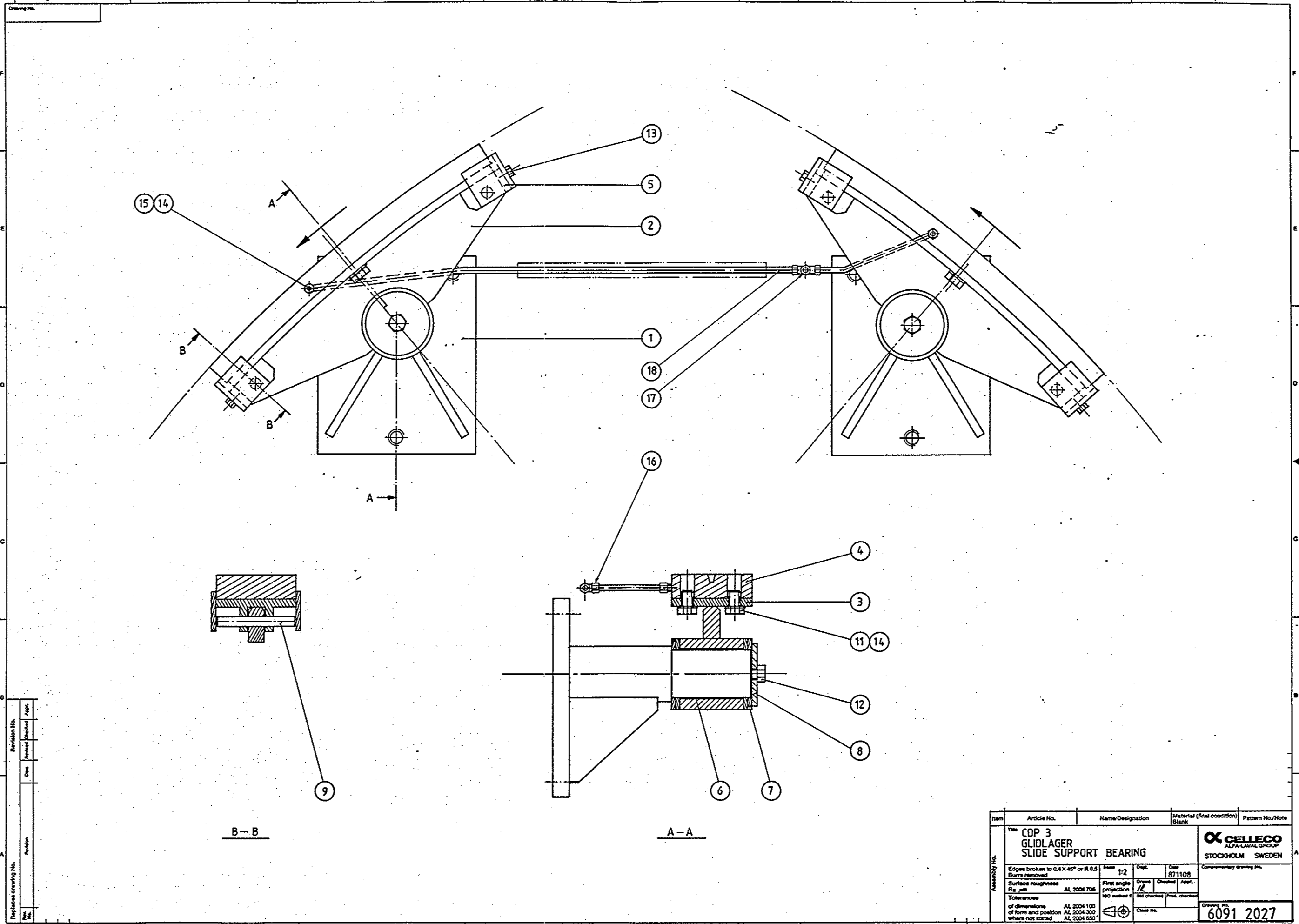
I-BEAM LIFTING CRADLE  
(DESIGNED AND PROVIDED BY CUSTOMER)

Only to the extent expressly agreed by us this document may constitute contractual obligation on our part.

This document and its contents are our exclusive property and must not be copied, reproduced, transmitted or communicated to any other party or used for purposes not expressly permitted by us.

Replaces drawing No.	Revision No.	Checked	Appr.
	Rev. No.	Revised	
	Date		
	Revision		

Qty	Item	Article No.	Name/Designation	Material (final condition) Blank	Pattern No./Note
Title		<b>CDP LIFTING CRADLE</b>			<b>ALFA-LAVAL</b> <b>CELLECO HEDENORA</b> ATLANTA U.S.A.
Assembly No.	Edges broken to 0.4x45° or R 0.5	Scale	Dept.	Date	Complementary drawing No.
	Burrs removed	First angle projection ISO method E	Drawn	Checked	
	Surface roughness Ra μm		AL 2004 705	Std checked	Prod. checked
	Tolerances of dimensions of form and position where not stated	AL 2004 100 AL 2004 300 AL 2004 650	Class No.		

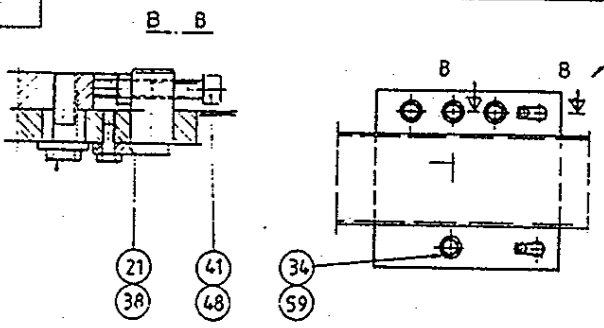
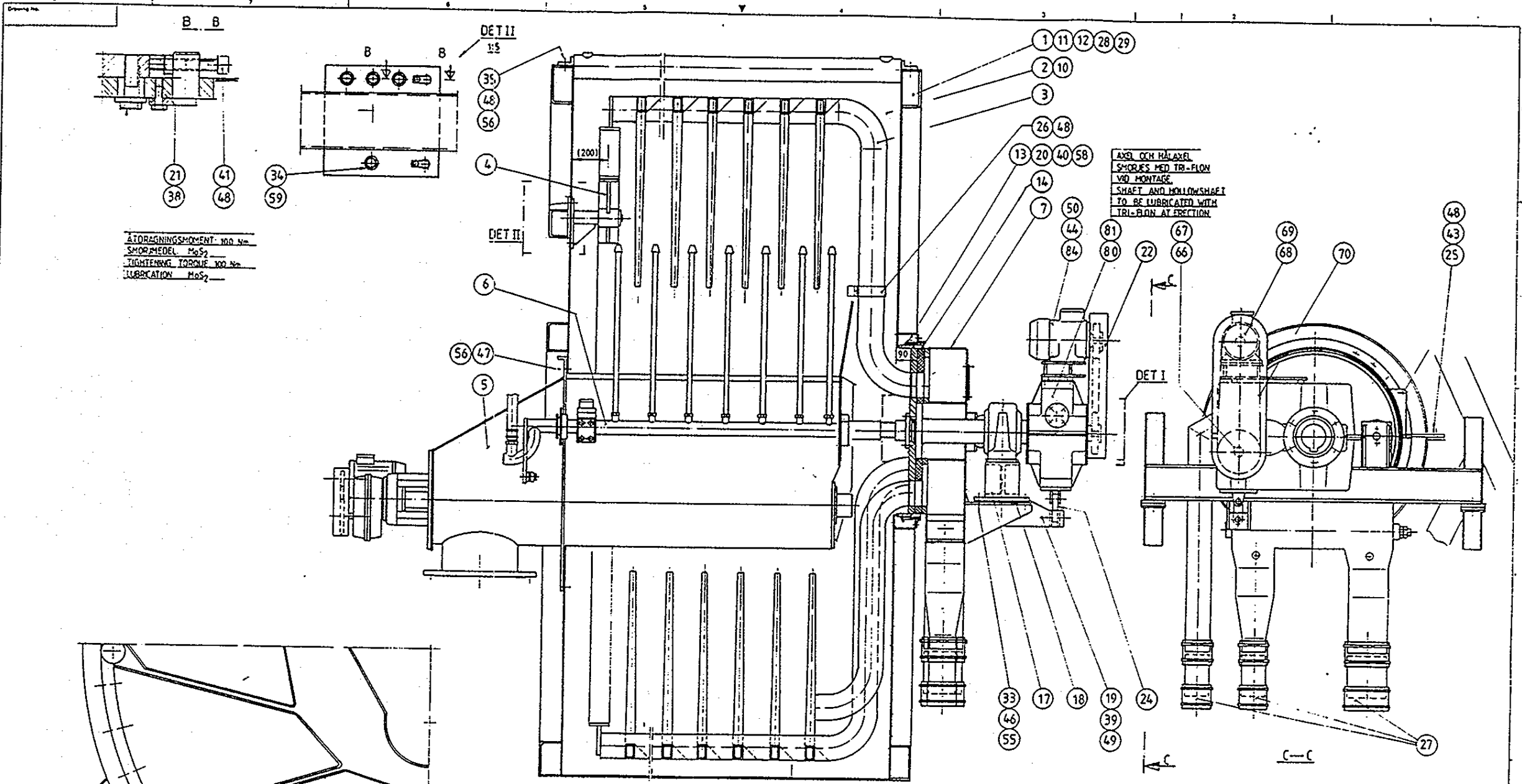


This document and its contents are the exclusive property of Alfa Laval and shall not be copied, reproduced, or disseminated in any form or by any means without the prior written permission of Alfa Laval.

Revision No.	Date	Revised By/Checked	Appr.

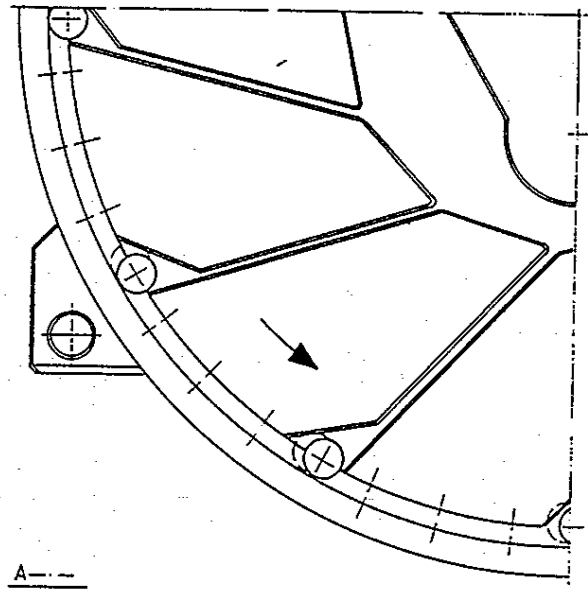
Item	Article No.	Name/Designation	Material (Final condition)	Pattern No./Note
The		<b>COP 3</b>		
		<b>GLIDLAGER</b>		
		<b>SLIDE SUPPORT BEARING</b>		
				<b>CELECO</b> ALFA-LAVAL GROUP STOCKHOLM SWEDEN
Assembly No.	Edges broken to 0.4 x 45° or R 0.5 Burrs removed	Scale 1:2	Drawn 871108	Complementary drawing No.
	Surface roughness Ra µm AL 2004 706	First angle projection	Checked 1/2	
	Tolerances of dimensions AL 2004 100 of form and position AL 2004 300 where not stated AL 2004 650	ISO surface 2	3rd checked (Prod. checked)	
			Clear No.	6091 2027





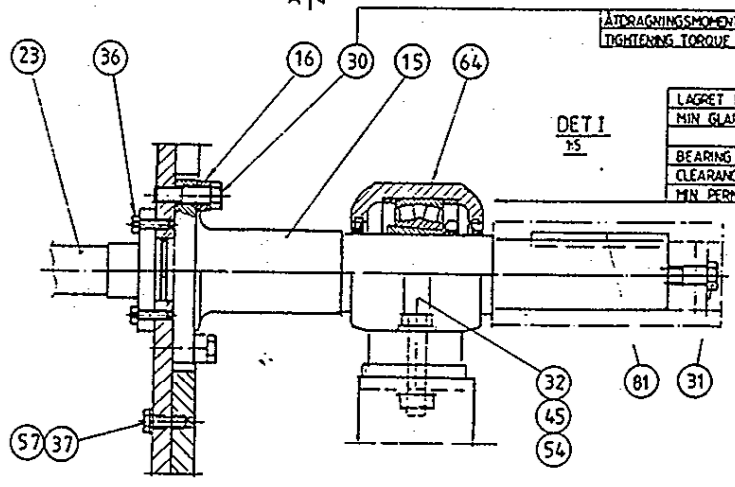
ÅTORAGNINGSMOMENT 100 Nm  
 SMORMEDEL MoS<sub>2</sub>  
 TIGHTENING TORQUE 100 Nm  
 LUBRICATION MoS<sub>2</sub>

AXEL OCH HÅLAXEL  
 SMORRES MED TRI-FLOW  
 VID MONTAGE  
 SHAFT AND HOLLOWSHAFT  
 TO BE LUBRICATED WITH  
 TRI-FLOW AT MOUNTING



ÅTORAGNINGSMOMENT 250 Nm SMORMEDEL MoS<sub>2</sub>  
 TIGHTENING TORQUE 250 Nm LUBRICATION MoS<sub>2</sub>

LAGRET MONTERAS MED EN RADIELL GLAPPHINSKING ±0,065 - 0,090 mm  
 MIN GLAPP MONTERAT : 0,055 mm  
 BEARING TO BE MOUNTED WITH A REDUCTION IN RADIAL INTERNAL  
 CLEARANCE OF: 0,065 - 0,090 mm  
 MIN PERMISSIBLE FINAL CLEARANCE AFTER MOUNTING BEARING : 0,055 mm

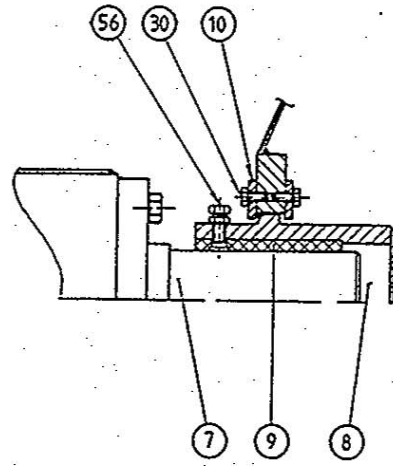
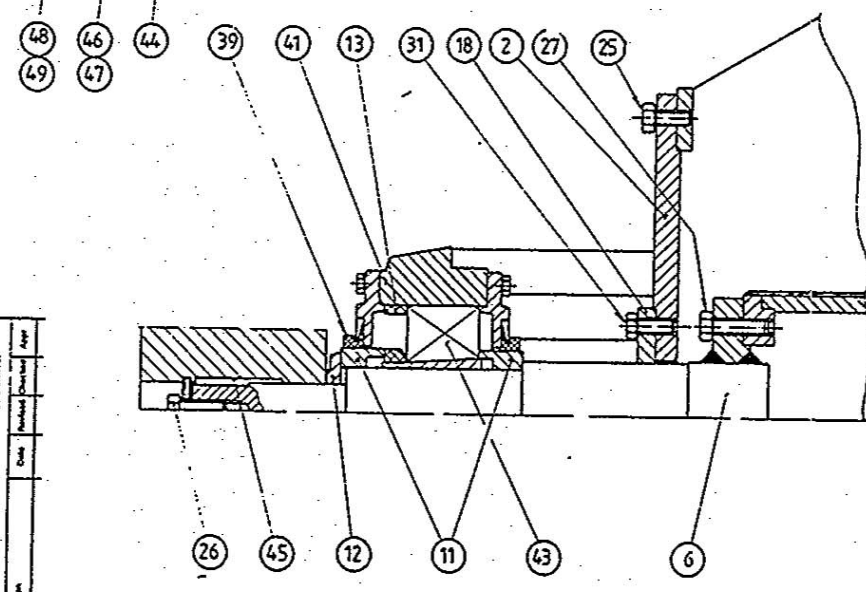
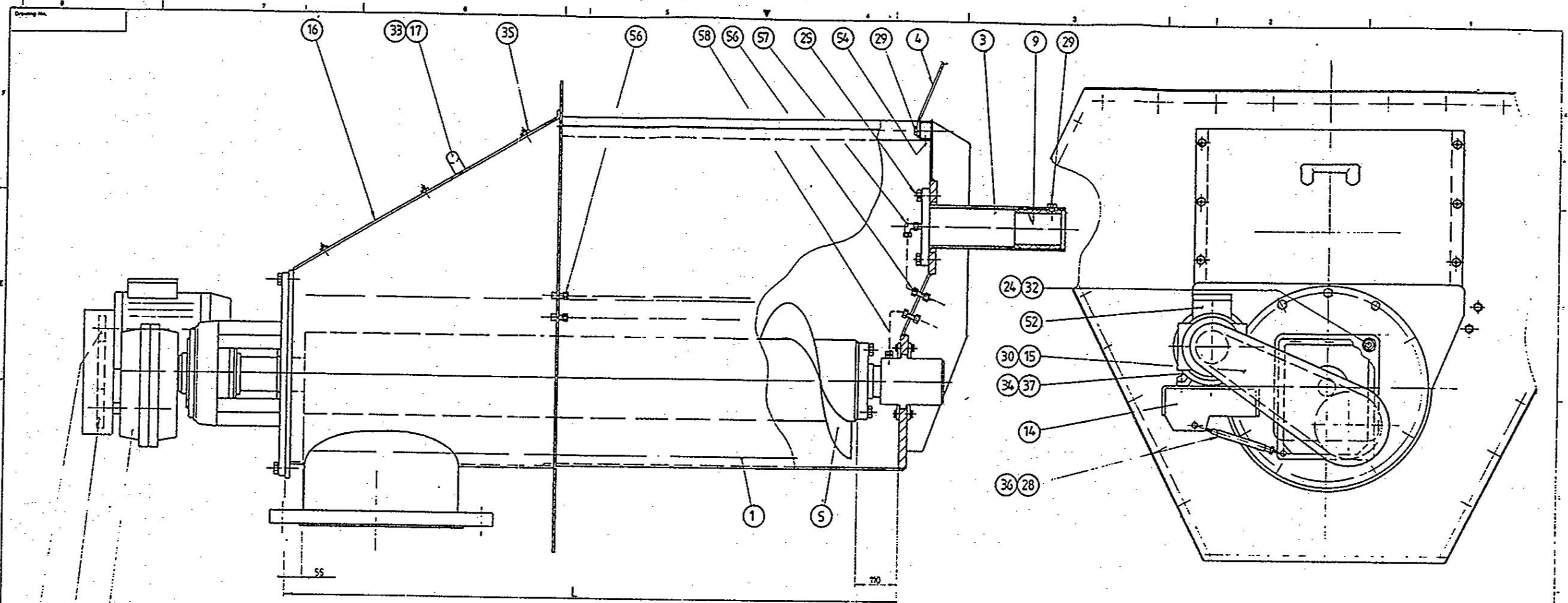


Revision No.	Revision	Date	Author	Checked	Approved
1					

Item	Article No.	Name/Designation	Material (Final condition)	Pattern No./Note
The CENTERDISC CDP 3-Smst Assy				
Edges broken to 0,4 x 45° or R 0,5				
Burns removed				
Surface roughness Ra μm	AL 2004 705	First angle projection	Scale: Overall Ass'y	Date: 88 04 05
Tolerances	AL 2004 100	3rd angle projection		
of dimensions	AL 2004 100			
of form and position	AL 2004 300			
where not stated	AL 2004 800			
Drawing No. 6091 2060				







- I LAGER MONTERAS MED RADELL GLÄPPMINSKNING  $\pm 0.045 - 0.060$  mm MIN GLÄPP MONTERAT  $0.025$  mm
- II LAGER OCH TÄTNINGSRINGAR INPACKAS MED FETT: SKF LGHT 3 EL. MOTSVARANDE
- I BEARINGS TO BE MOUNTED WITH A REDUCTION IN RADIAL INTERNAL CLEARANCE OF  $0.0018'' - 0.0025''$  MIN PERMISSIBLE FINAL CLEARANCE AFTER MOUNTING BEARINGS  $0.0014''$
- II BEARINGS AND SEALS TO BE FILLED WITH GREASE SKF LGHT 3 OR EQ.

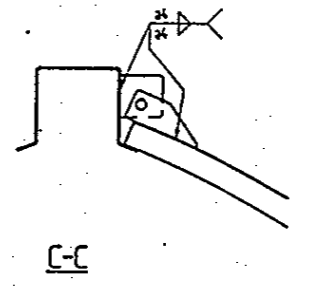
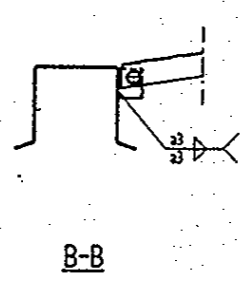
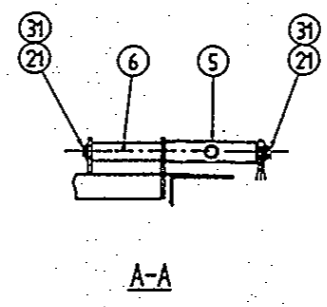
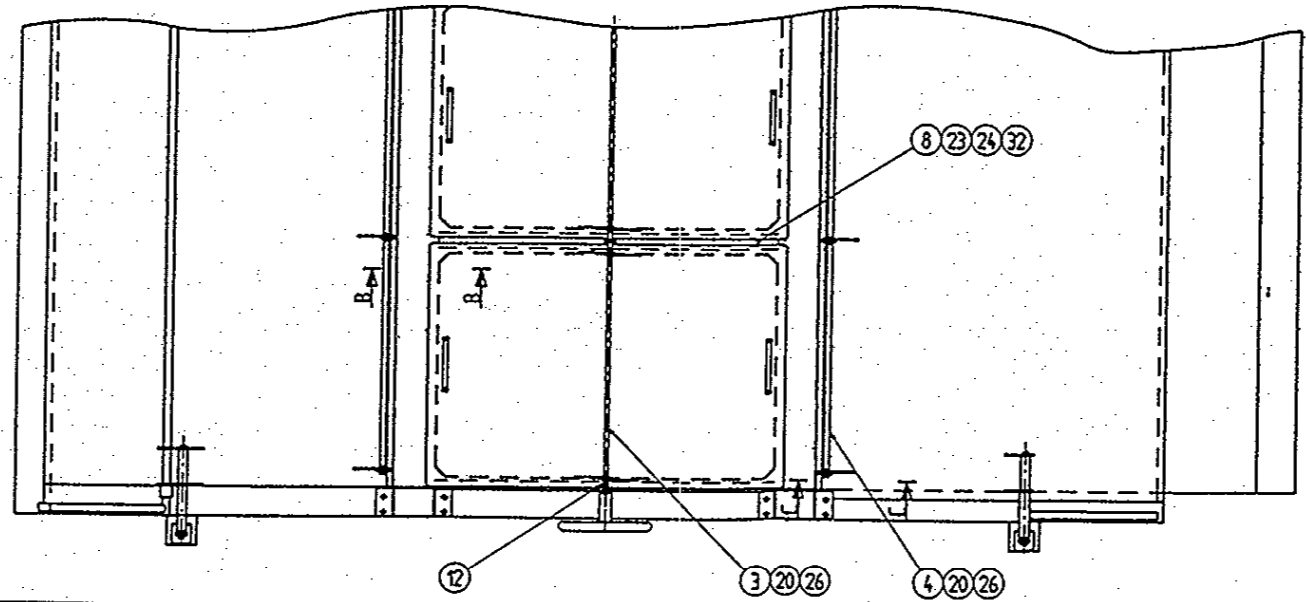
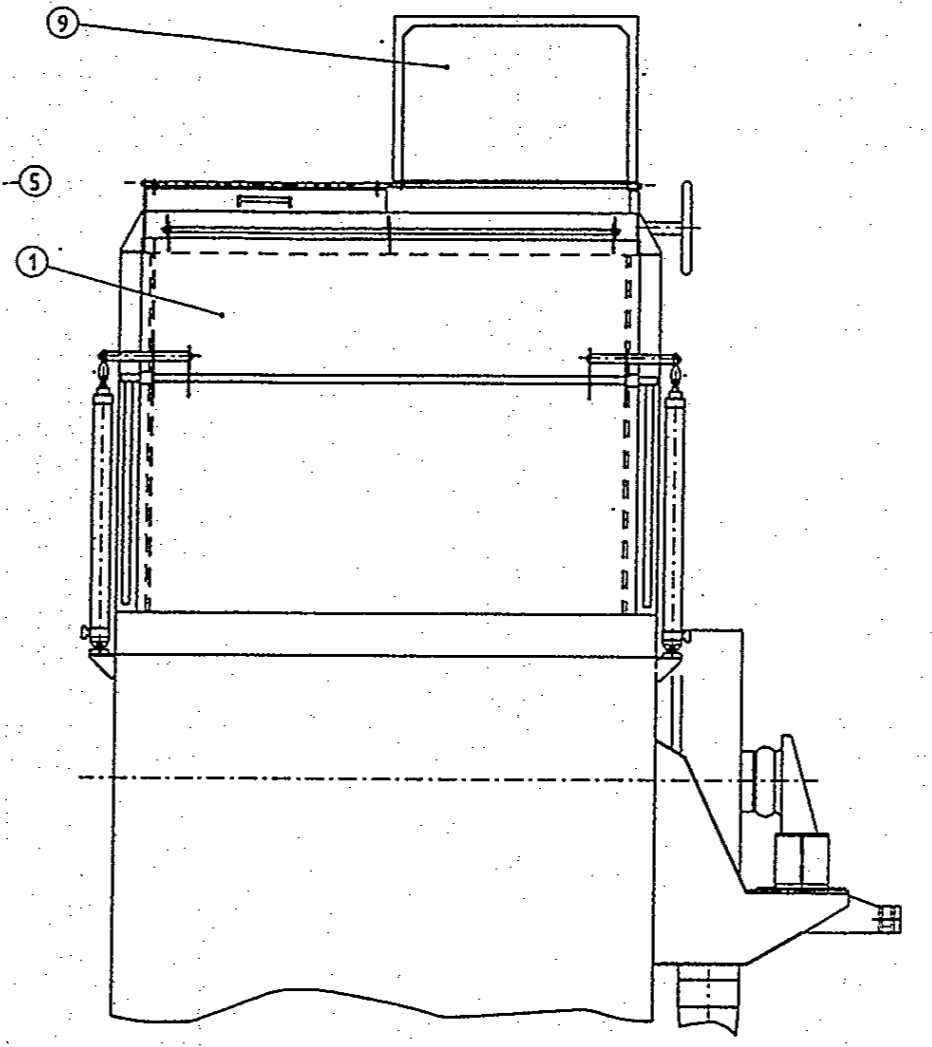
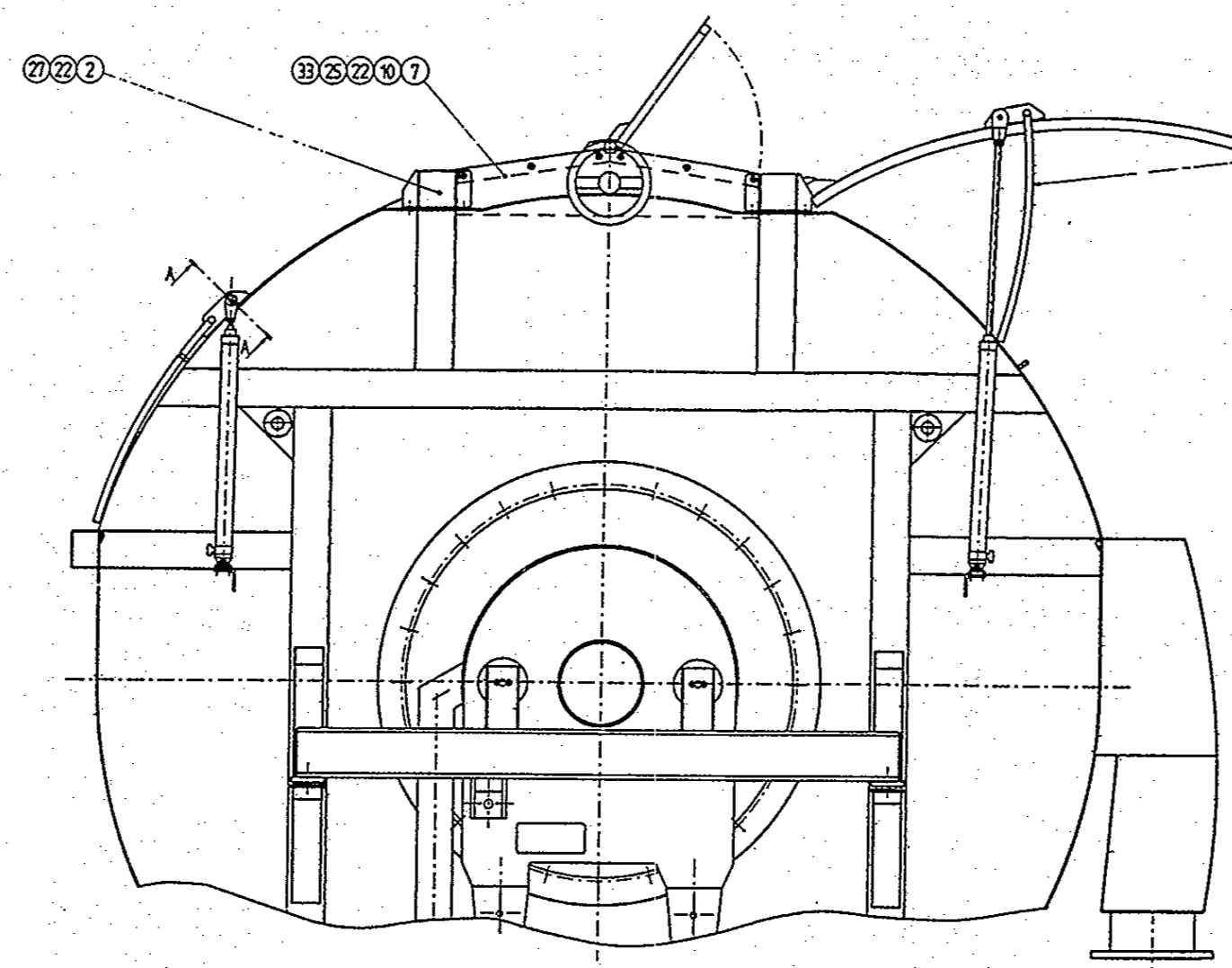
Reproduction of this drawing without the written permission of the manufacturer is prohibited.

Revision No.	1
Author	
Check	
Approved	

Item	Article No.	Name/Designation	Material (Final condition)	Part No./Note
		<b>CDP 3</b>		
		<b>UTMATNINGSTRÄG</b>		
		<b>OUTFEED VAT</b>		
		Smst Assy		
		ALUMINUM GROUP		
		STOCKHOLM SWEDEN		
Quantity	15	15	15	15
Surface roughness	AL 2004 705	First angle projection	ISO method B	
Tolerances	AL 2004 100	of form and position	AL 2004 300	where not stated
		AL 2004 650		
		6091 2070		



AUTOCAD



1:1  
 1:2  
 1:3  
 1:4  
 1:5  
 1:6  
 1:7  
 1:8  
 1:9  
 1:10  
 1:11  
 1:12  
 1:13  
 1:14  
 1:15  
 1:16  
 1:17  
 1:18  
 1:19  
 1:20  
 1:21  
 1:22  
 1:23  
 1:24  
 1:25  
 1:26  
 1:27  
 1:28  
 1:29  
 1:30  
 1:31  
 1:32  
 1:33  
 1:34  
 1:35  
 1:36  
 1:37  
 1:38  
 1:39  
 1:40  
 1:41  
 1:42  
 1:43  
 1:44  
 1:45  
 1:46  
 1:47  
 1:48  
 1:49  
 1:50  
 1:51  
 1:52  
 1:53  
 1:54  
 1:55  
 1:56  
 1:57  
 1:58  
 1:59  
 1:60  
 1:61  
 1:62  
 1:63  
 1:64  
 1:65  
 1:66  
 1:67  
 1:68  
 1:69  
 1:70  
 1:71  
 1:72  
 1:73  
 1:74  
 1:75  
 1:76  
 1:77  
 1:78  
 1:79  
 1:80  
 1:81  
 1:82  
 1:83  
 1:84  
 1:85  
 1:86  
 1:87  
 1:88  
 1:89  
 1:90  
 1:91  
 1:92  
 1:93  
 1:94  
 1:95  
 1:96  
 1:97  
 1:98  
 1:99  
 1:100

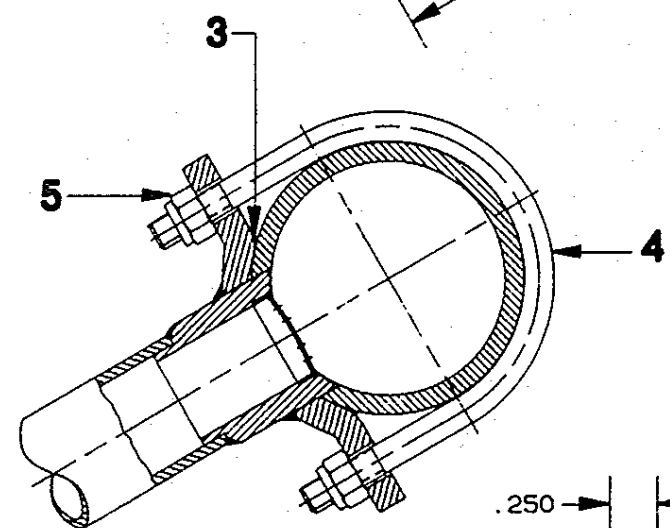
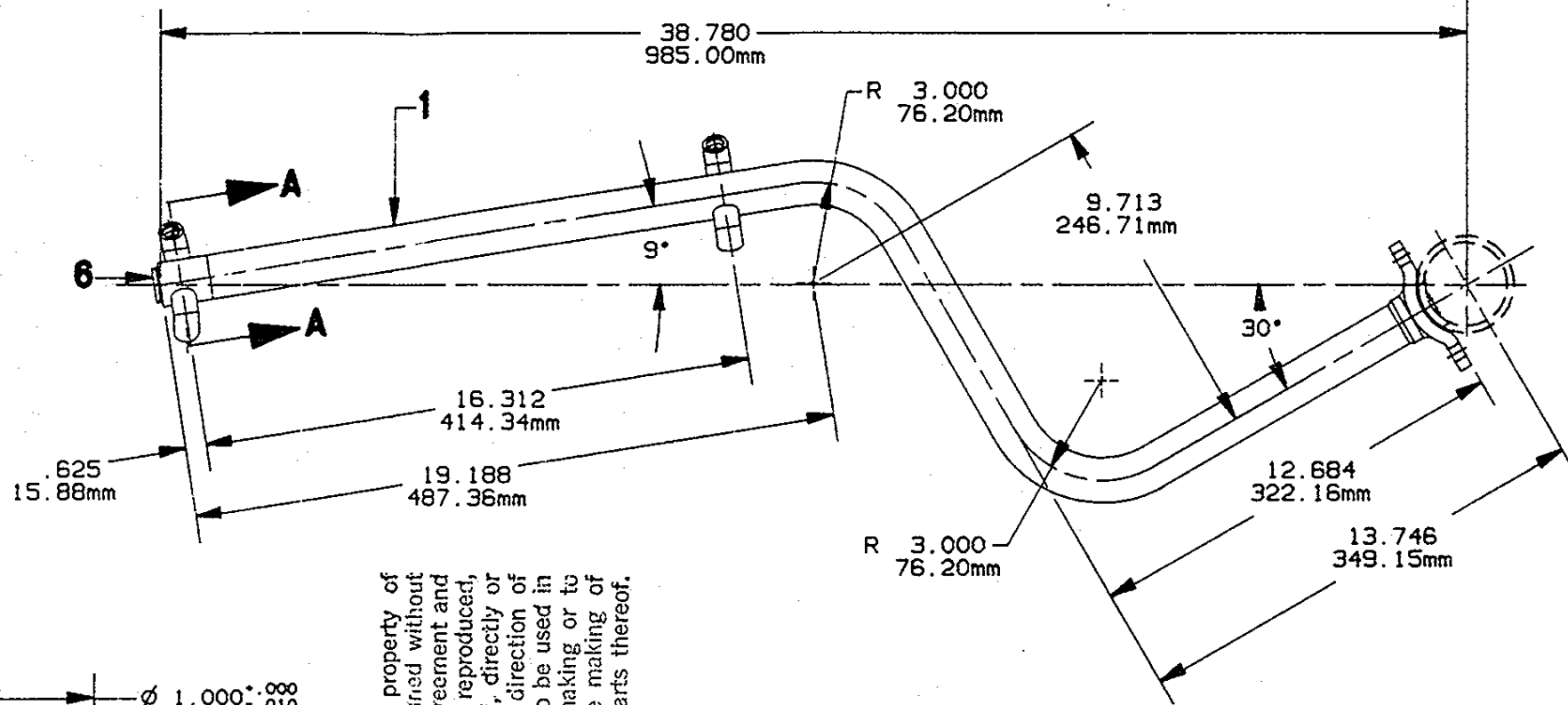
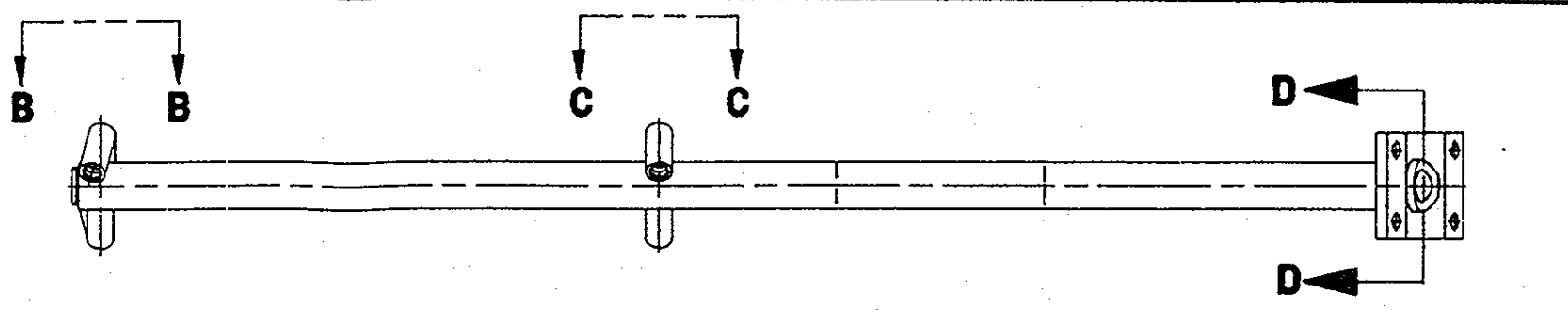
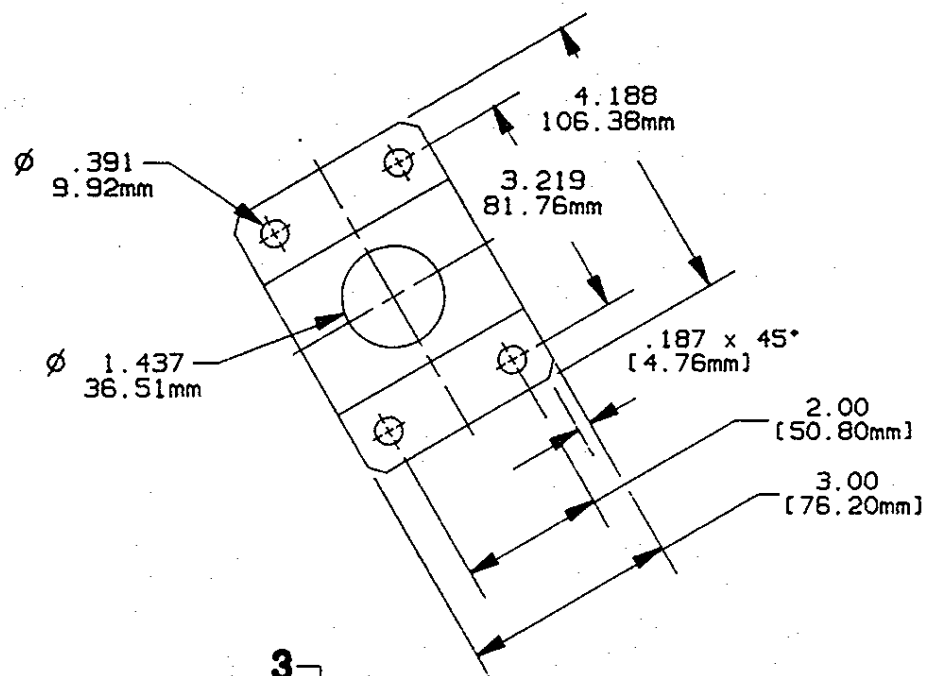
№	Имя	Art. №	Имя/Описание	Исполн. и/или автор	Дата
1	Исполнитель				
2	Проверенный				
3	Утвержденный				
4	Специальный				
5	Специальный				
6	Специальный				
7	Специальный				
8	Специальный				
9	Специальный				
10	Специальный				
11	Специальный				
12	Специальный				
13	Специальный				
14	Специальный				
15	Специальный				
16	Специальный				
17	Специальный				
18	Специальный				
19	Специальный				
20	Специальный				
21	Специальный				
22	Специальный				
23	Специальный				
24	Специальный				
25	Специальный				
26	Специальный				
27	Специальный				
28	Специальный				
29	Специальный				
30	Специальный				
31	Специальный				
32	Специальный				
33	Специальный				
34	Специальный				
35	Специальный				
36	Специальный				
37	Специальный				
38	Специальный				
39	Специальный				
40	Специальный				
41	Специальный				
42	Специальный				
43	Специальный				
44	Специальный				
45	Специальный				
46	Специальный				
47	Специальный				
48	Специальный				
49	Специальный				
50	Специальный				
51	Специальный				
52	Специальный				
53	Специальный				
54	Специальный				
55	Специальный				
56	Специальный				
57	Специальный				
58	Специальный				
59	Специальный				
60	Специальный				
61	Специальный				
62	Специальный				
63	Специальный				
64	Специальный				
65	Специальный				
66	Специальный				
67	Специальный				
68	Специальный				
69	Специальный				
70	Специальный				
71	Специальный				
72	Специальный				
73	Специальный				
74	Специальный				
75	Специальный				
76	Специальный				
77	Специальный				
78	Специальный				
79	Специальный				
80	Специальный				
81	Специальный				
82	Специальный				
83	Специальный				
84	Специальный				
85	Специальный				
86	Специальный				
87	Специальный				
88	Специальный				
89	Специальный				
90	Специальный				
91	Специальный				
92	Специальный				
93	Специальный				
94	Специальный				
95	Специальный				
96	Специальный				
97	Специальный				
98	Специальный				
99	Специальный				
100	Специальный				

60915048

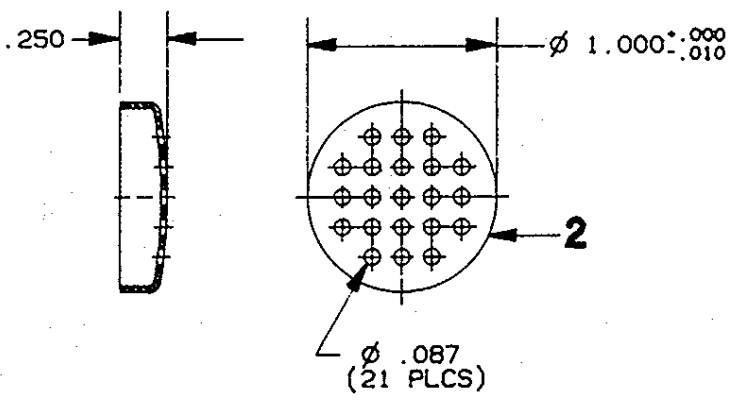






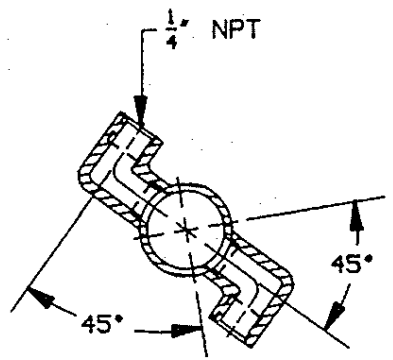


**SECTION D-D**

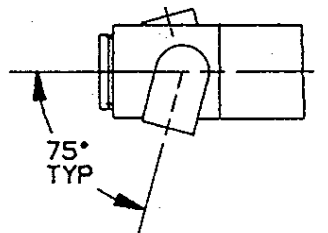


This drawing is the exclusive property of Spraying Systems Co. and is loaned without other considerations than the agreement and condition that it is not to be reproduced, copied or otherwise disposed of, directly or indirectly, and except upon the direction of Spraying Systems Co., it is not to be used in whole or in part to assist in making or to furnish any information for the making of drawings, prints, apparatus or parts thereof.

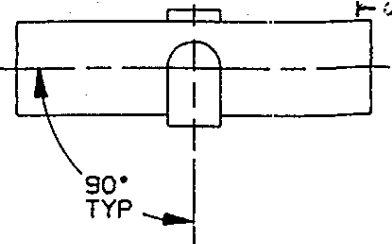
ITEM	QTY	PART NUMBER	DESCRIPTION
6	1	28046-109	HEX HEAD PLUG
5	4	27095-14	SELF LOCKING NUTS (OPTIONAL)
4	2	28170-101	U-BOLTS (OPTIONAL)
3	1	27098-04	O-RING
2	1	28250-101	SCREEN
1	1	28249-003	SPRAY PIPE ASSY



**SECTION A-A**



**VIEW B-B**

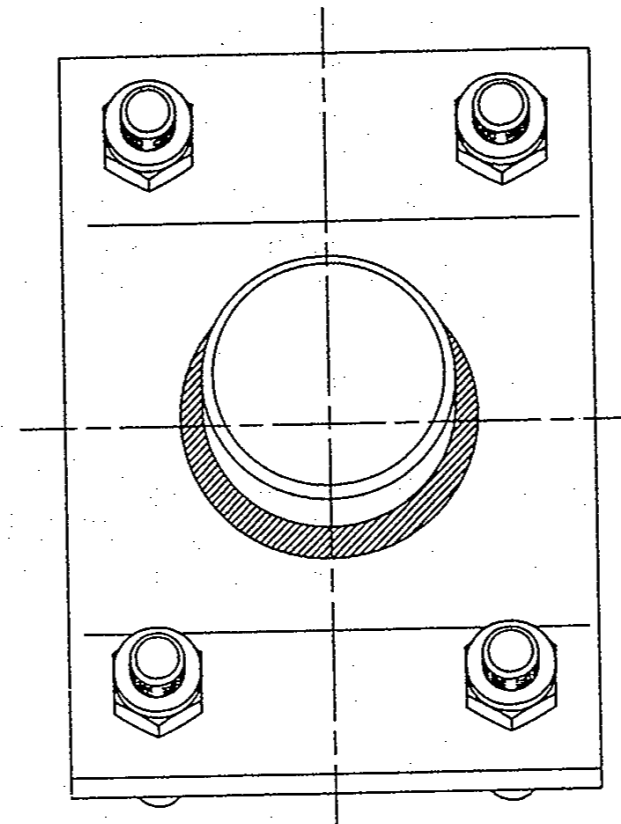
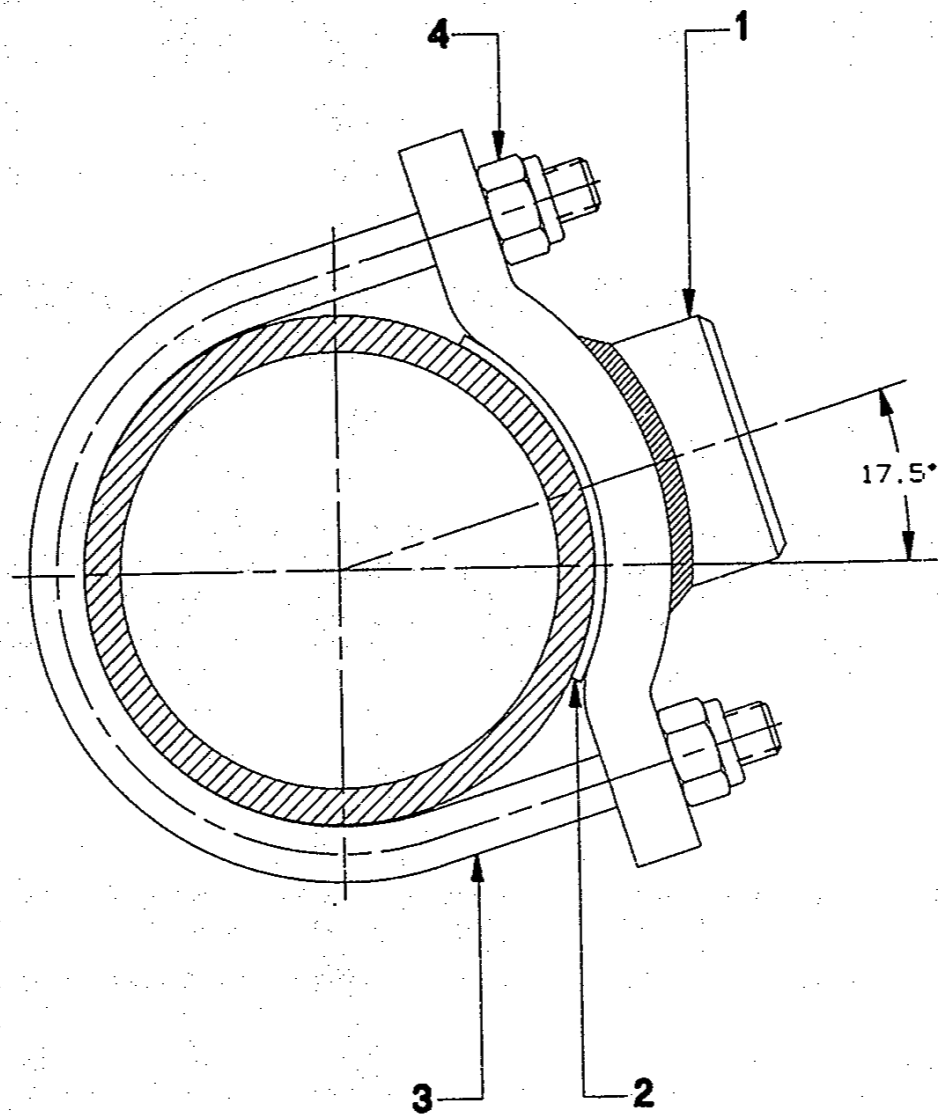


**VIEW C-C**

**OSCILLATING SHOWER PIPE**

MODEL NO.	DESCRIPTION	REF.	DOCUMENT NO.
	<b>PRODUCT OUTLINE</b>		<b>L 27794-03</b>
	<b>SPRAY PIPE (DISC FILTER)</b>		SHEET 1 OF 1 REV. A
		DATE 08/07/92	<b>Spraying Systems Co.</b> East Coast Facility • Hudson, NH 03051


BRUNING 75767

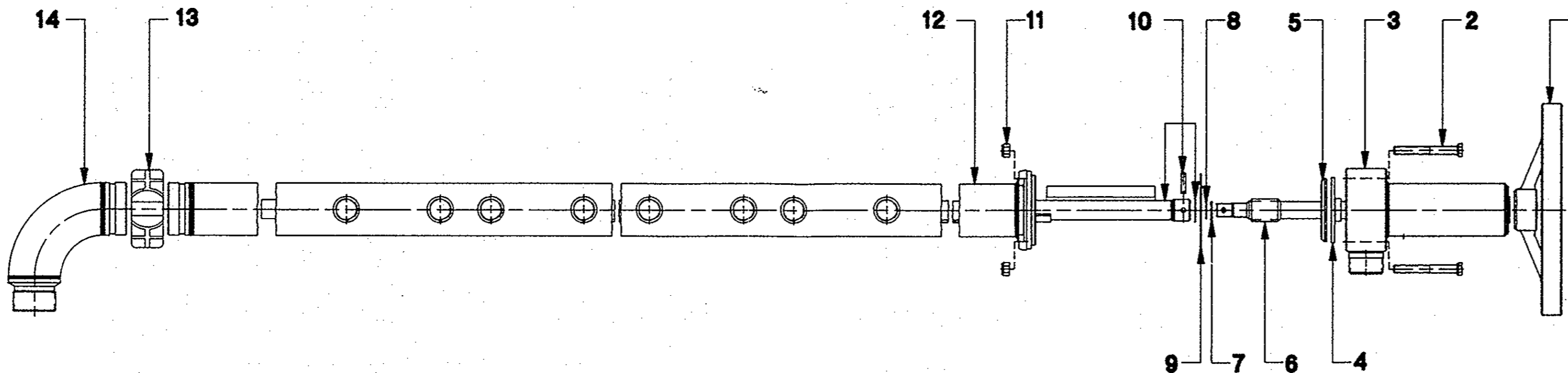


This drawing is the exclusive property of Spraying Systems Co. and is loaned without other considerations than the agreement and condition that it is not to be reproduced, copied or otherwise disposed of, directly or indirectly, and except upon the direction of Spraying Systems Co. It is not to be used in whole or in part to avert, making or to furnish any information for the making of drawings, prints, apparatus or parts thereof.

4	4	27095-14	SELF LOCKING NUTS (OPTIONAL)
3	2	28170-101	U-BOLTS (OPTIONAL)
2	1	27098-04	O-RING
1	1	28249-005	PLUG WELD ASSEMBLY
ITEM	QTY	PART NUMBER	DESCRIPTION

#### OSCILLATING SHOWER PLUG

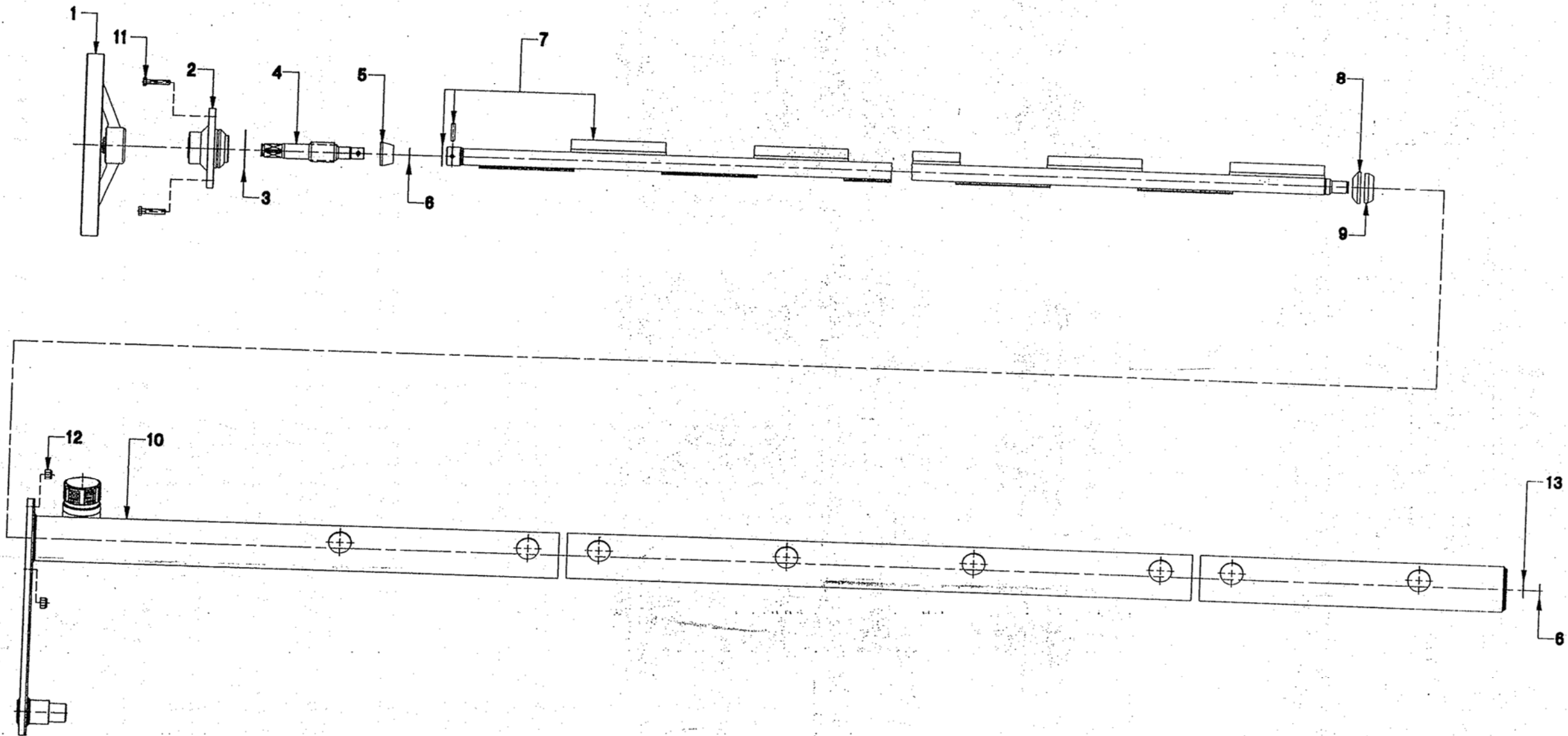
MODEL NO.	DESCRIPTION <b>PRODUCT OUTLINE</b>	REF.	DOCUMENT NO. <b>L27794-05</b>	APP. <i>[Signature]</i>
	<b>PLUG ASSEMBLY</b>		SHEET <b>1</b> OF <b>1</b> REV. <b>A</b>	
		DATE 08/07/92	 <b>Spraying Systems Co.</b> <small>East Coast Facility • Hudson, NH 03051</small>	



14	1	28194-002	INLET ASSEMBLY
13	1	28130-106	2-1/2 VICTAULIC COUPLING
12	1	28116-316	PIPE ASSEMBLY
11	4	27095-17	7/16-14 SELF LOCKING NUT
10	1	28117-033	BRUSH ASSEMBLY
9	1	27098-02	O-RING
8	1	27037-01	RETAINING RING
7	1	27035-01	WASHER
6	1	27047-02	SHAFT
5	1	27034-02	VALVE SEAL
4	1	27033-02	BACK-UP RING
3	1	28193-002	VALVE HOUSING ASSEMBLY
2	4	28122-214	7/16-14 HEX HEAD CAP SCREW
1	1	27099-02	HANDWHEEL ASSEMBLY
ITEM	QTY	PART NUMBER	DESCRIPTION

This drawing is the exclusive property of Spraying Systems Co. and is loaned without other considerations than the agreement and condition that it is not to be reproduced, copied or otherwise disposed of, directly or indirectly, and except upon the direction of Spraying Systems Co., it is not to be used in whole or in part to assist in making or to furnish any information for the making of drawings, prints, apparatus or parts thereof.

MODEL NO.	DESCRIPTION	REF.	DOCUMENT NO.	APPR.
	<b>SPARE PARTS LISTS</b>		<b>L28192-316</b>	
	<b>KNOCK-OFF HEADER</b>		SHEET <b>1</b> OF <b>1</b> REV. <b>A</b>	
		DATE 08/04/92	<b>Spraying Systems Co.</b> <small>East Coast Facility • Hudson, NH 03051</small>	



ITEM	QTY	PART NUMBER	DESCRIPTION
13	1	27035-01	WASHER
12	4	27095-13	5/16 -18 SELF LOCKING NUTS
11	4	28113-209	5/16 -18 HEX HD CAP SCREW
10	1	28238-316	PIPE ASSEMBLY
9	1	27034-03	VALVE SEAL
8	1	27033-03	BACK-UP RING
7	1	28115-316	BRUSH ASSEMBLY
6	2	27037-01	RETAINING RING
5	1	27908-01	STOP
4	1	27047-01	SHAFT
3	1	27098-05	O-RING
2	1	28238-001	VALVE HOUSING ASSEMBLY
1	1	27099-02	HANDWHEEL ASSEMBLY

This drawing is the exclusive property of Spraying Systems Co. and is loaned without other considerations than the agreement and condition that it is not to be reproduced, copied or otherwise disposed of, directly or indirectly, and except upon the direction of Spraying Systems Co., it is not to be used in whole or in part to assist in making or to furnish any information for the making of drawings, prints, apparatus or parts thereof.

MODEL NO.	DESCRIPTION	REF.	DOCUMENT NO.
	<b>PRODUCT OUTLINE</b> <b>OSCILLATING</b> <b>HEADER</b>		<b>L 28241-016</b>
		DATE	SHEET 1 OF 1 REV. A
		08/06/92	Spraying Systems Co.