



VIDA BEM

2,000 HP Drilling Rig Package

National 1320 UE

This document is the confidential and proprietary property of VIDA BEM LLC. It may contain technical information, service descriptions, and commercial cost estimates pertaining to VIDA BEM LLC products and services that are confidential. No part of this document may be reproduced, transmitted, or used for other than the designated purposes without prior permission of VIDA BEM LLC.

Disclaimer / Confidentiality Statement

This document is strictly private and confidential, and is being submitted for the sole purpose of responding to an expression of interest related to the sale of rig equipment being offered by VIDA BEM, LLC. This document contains information that is proprietary and confidential ("Confidential Information") and is being provided for the sole purpose of evaluating this equipment package. Confidential Information includes information relating to the goods, equipment, and/ or services referred to in the proposal, but is not limited to, specifications, designs, drawings, product data, manufacturing processes, installation methods, price lists, technical information, visually transmitted information, trade secrets, software, firmware, and other confidential or proprietary information forming part of this document.

By continuing past this notice to review you agree to keep this information confidential and agree to limit disclosure of the information to only those authorized employees and representatives who need to know the information in order to evaluate this equipment package.

In addition, you agree not to; (i) disclose the information contained in this document to any third parties; (ii) use the information for any purpose other than to evaluate the equipment acquisition; (iii) use the information in any other way that might be prejudicial or detrimental to VIDA BEM, LLC and (iv) copy, distribute or reproduce the contents of the proposal information in whole or part.

In the event this equipment package is not considered any further and / or your client is not considered for the award letter, you agree to destroy this document in digital and hard copy forms, and all complete or partial replications or excerpts taken from it, or to return the same to VIDA BEM, LLC.

The equipment owner owns its patents, copyrights, commercial secrets, technology, knowledge, information of any nature ("Intellectual Property"), revealed in connection with the subject matter of this proposal and nothing contained in the same shall be considered as an authorization or transference or license or property rights or rights of any nature of a party towards the other in any matter related with Intellectual Property.

All operating and controls systems mentioned in this document are used for identification purposes only and may be trademarks of their respective owners.

This equipment package is subject to a mutually agreed definitive agreement between our companies, and while the intent is to eventually negotiate and execute the same at a later date, it is expressly understood that this is an equipment description document only and no liability or obligation of any nature whatsoever is intended to be created hereunder.

This document is the confidential and proprietary property of VIDA BEM LLC. It may contain technical information, service descriptions, and commercial cost estimates pertaining to VIDA BEM LLC products and services that are confidential. No part of this document may be reproduced, transmitted, or used for other than the designated purposes without prior permission of VIDA BEM LLC.

This document is the confidential and proprietary property of VIDA BEM LLC. It may contain technical information, service descriptions, and commercial cost estimates pertaining to VIDA BEM LLC products and services that are confidential. No part of this document may be reproduced, transmitted, or used for other than the designated purposes without prior permission of VIDA BEM LLC.

TABLE OF CONTENTS

1.0 HISTORY
2.0 TECHNICAL OVERVIEW
3.0 GENERAL LAYOUT
3.1 PIT FLOW DIAGRAM
3.2 GENERAL CLASSIFICATION CRITERIA
4.0 CROWN BLOCK
5.0 MAST
6.0 SUBSTRUCTURE
7.0 DRAWWORKS
8.0 DRAWWORKS POWER
9.0 AUXILLARY BRAKE
10.0 BRAKE CONTROL SYSTEM
11.0 COOLING SYSTEM
12.0 DRILLERS CONSOLE
13.0 HOISTING EQUIPMENT
14.0 DEADLINE ANCHOR
15.0 DRILL LINE
16.0 AIR HOIST
17.0 MAN RIDING WINCH/MANLIFTER
18.0 ROTARY EQUIPMENT
19.0 MASTER BUSHING and BOWLS
20.0 TOP DRIVE
21.0 SWIVEL and ACCESSORIES
22.0 WELL CONTROL EQUIPMENT
23.0 ACCUMULATOR UNIT
24.0 CHOKE MANIFOLD
25.0 POOR BOY MUD GAS SEPARATOR
26.0 RIG POWER/GENERATORS
27.0 GENERATOR

This document is the confidential and proprietary property of VIDA BEM LLC. It may contain technical information, service descriptions, and commercial cost estimates pertaining to VIDA BEM LLC products and services that are confidential. No part of this document may be reproduced, transmitted, or used for other than the designated purposes without prior permission of VIDA BEM LLC.

28.0 POWER DISTRIBUTION

29.0 RIG LIGHTING

30.0 MUD PUMP & HIGH-PRESSURE LINES

30.1 PERFORMANCE RATING

30.2 MUD PUMP POWER #1

30.3 MUD PUMP #2

30.4 PERFORMANCE RATING

30.5 MUD PUMP POWER #2

30.6 MUD PUMP #3

30.7 PERFORMANCE DATA

30.8 MUD PUMP POWER #3

31.0 CHARGING PUMPS

32.0 HIGH PRESSURE MUD LINES

32.1 STAND PIPE MANIFOLD

33.0 MUD TANK MUD HANDLING

33.1 SETTLING/ INTERMEDIATE TANK

33.2 ACTIVE / MIXING TANK

33.3 SPARE TANK

33.4 WATER TANK #1

33.5 WATER TANK #2

33.6 WATER TANK #3

33.7 TRIP TANK

34.0 MUD HANDLING

34.1 SHALE SHAKER POWER 1

34.2 SHALE SHAKER POWER 2

34.3 SHALE SHAKER POWER 3

35.0 DESANDER UNIT



This document is the confidential and proprietary property of VIDA BEM LLC. It may contain technical information, service descriptions, and commercial cost estimates pertaining to VIDA BEM LLC products and services that are confidential. No part of this document may be reproduced, transmitted, or used for other than the designated purposes without prior permission of VIDA BEM LLC.

35.1 DESANDER UNIT

36.0 VACUUM D-GASSER

37.0 MUD AGITATORS

38.0 MUD HOPPER

39.0 COMPRESSOR ROOM

40.0 INSTRUMENTATION

REFERENCES



This document is the confidential and proprietary property of VIDA BEM LLC. It may contain technical information, service descriptions, and commercial cost estimates pertaining to VIDA BEM LLC products and services that are confidential. No part of this document may be reproduced, transmitted, or used for other than the designated purposes without prior permission of VIDA BEM LLC.

1.0 HISTORY

YEAR OF CONSTRUCTION:

REFURBISHED AND UPGRADED: 2014

LAST CAT IV: 2014

LAST WELL DRILLED: 2010

DATE RETURNED TO YARD: 2013

Component	Original Manufacture Estimate	Refurbishment Year	Details/Notes
Crown Block	~1985 (1980–1990)	2014	Model: Lee C. Moore 60" X 7W X 454 Ton, S/N T-3930. Serial suggests late-1980s build (sequential to T-3839 ~1980s rigs). Built to API RP 8B; MPI inspection in Dec 2012–Jan 2013 confirms pre-refurb age.
Mast	~1985 (1980–1990)	2014	Model: Lee C. Moore Cantilever, 147 ft, 1,000,000 lbs hook load. Matches 1980s-era cantilever designs (post-1938 innovation peak); similar 142 ft masts from that decade in sales records.
Substructure (Sub Base)	~1985 (1980–1990)	2014	Model: Lee C. Moore Singleshot, 600,000 lbs static load. "Singleshot" design typical of 1980s mobile land rigs; aligns with era's focus on efficient substructures for 2000 HP setups.
Drawworks	~1978 (1975–1985)	2014	Model: National 1320UE, 200,000 lbs max pull, 2 x 750 HP input. 1320UE series produced mid-1970s onward; comparable units in sales from 1979 rigs. Equipped with Elmagco brakes (common 1970s pairing).

***Proof of Funds must be presented prior to scheduling an inspection**

***Inspection at buyer expense.**

***Inspection Note: We have access to inspection agency in country if required and can also mobilize the last rigging team and supervisor should you need the unit reassembled at a new location (Service at an additional cost and not included in quoted price)**

This document is the confidential and proprietary property of VIDA BEM LLC. It may contain technical information, service descriptions, and commercial cost estimates pertaining to VIDA BEM LLC products and services that are confidential. No part of this document may be reproduced, transmitted, or used for other than the designated purposes without prior permission of VIDA BEM LLC.

2.0 TECHNICAL OVERVIEW

NATIONAL 1320 UE (2000 HP)

Rating: 2,000 HP

Hook load: 1,000,000 lbs @ 12 lines

Drilling Depth: 20,000 ft

Year of Refurbish: 2014

Last CAT IV: **2014**

MAST

Type: Lee C. Moore Cantilever

Height: 147 ft

Base: 30 ft

N.G.C: 1,330,000 lbs.

Hook Load: 1,000,000 lbs.

SUBSTRUCTURE

Type: Lee C. Moore Slingshot

Height: 25 ft + 5 subbase-skidding

Casing load: 1,000,000 lbs.

Setback: 600,000 lbs.

DRAWWORKS

Type: National 1320 UE

Horse power rating: 2,000 HP

Max line pull: 98,900 lbs.

Drilling Line Diameter: 1-1/2"

Auxiliary Brake: Elmagco Baylor 7040

Input Power: Two (2) GE752 Motos, Rated at 1000 HP Each



This document is the confidential and proprietary property of VIDA BEM LLC. It may contain technical information, service descriptions, and commercial cost estimates pertaining to VIDA BEM LLC products and services that are confidential. No part of this document may be reproduced, transmitted, or used for other than the designated purposes without prior permission of VIDA BEM LLC.

TOP DRIVE

Type: VARCO TDS-11-SA

Capacity: 1,000,000 lbs.

Torque: 37,500 ft. lbs.

ROTARY TABLE

Type: National D-375

Table opening: 37-1/2"

TRAVELING EQUIPMENT

Traveling Block: Continental EMSCO RA52-6

Capacity: 1,000,000 lbs.

RIG POWER

Engine type: Caterpillar D399PC

Horsepower rating: 4 x 1,260 HP each

Generator type: KATO 1030

Generator Rating: 4 x 1,287 kVA

Voltage: 600/440, 60 Hz

SCR Unit: Ross Hill 1201

MCC: 480 Volt

MUD SYSTEM

Pump Type: Weatherford MP 16

Horsepower rating: 2 x 1,600 HP

Pump type: National 1700P

Horsepower rating: 1 x 1,700 HP

Standpipe pressure: 5,000 psi

Shale Shaker Type: Derrick

Shale Shaker: 3 x Linear Motion

Active mud system: 1,800 bbl.



This document is the confidential and proprietary property of VIDA BEM LLC. It may contain technical information, service descriptions, and commercial cost estimates pertaining to VIDA BEM LLC products and services that are confidential. No part of this document may be reproduced, transmitted, or used for other than the designated purposes without prior permission of VIDA BEM LLC.



1-800-957-2391

BOP EQUIPMENT:

Annular: 21-1/4" x 2,000 PSI

Double Ram: 12-5/8" x 5,000 PSI

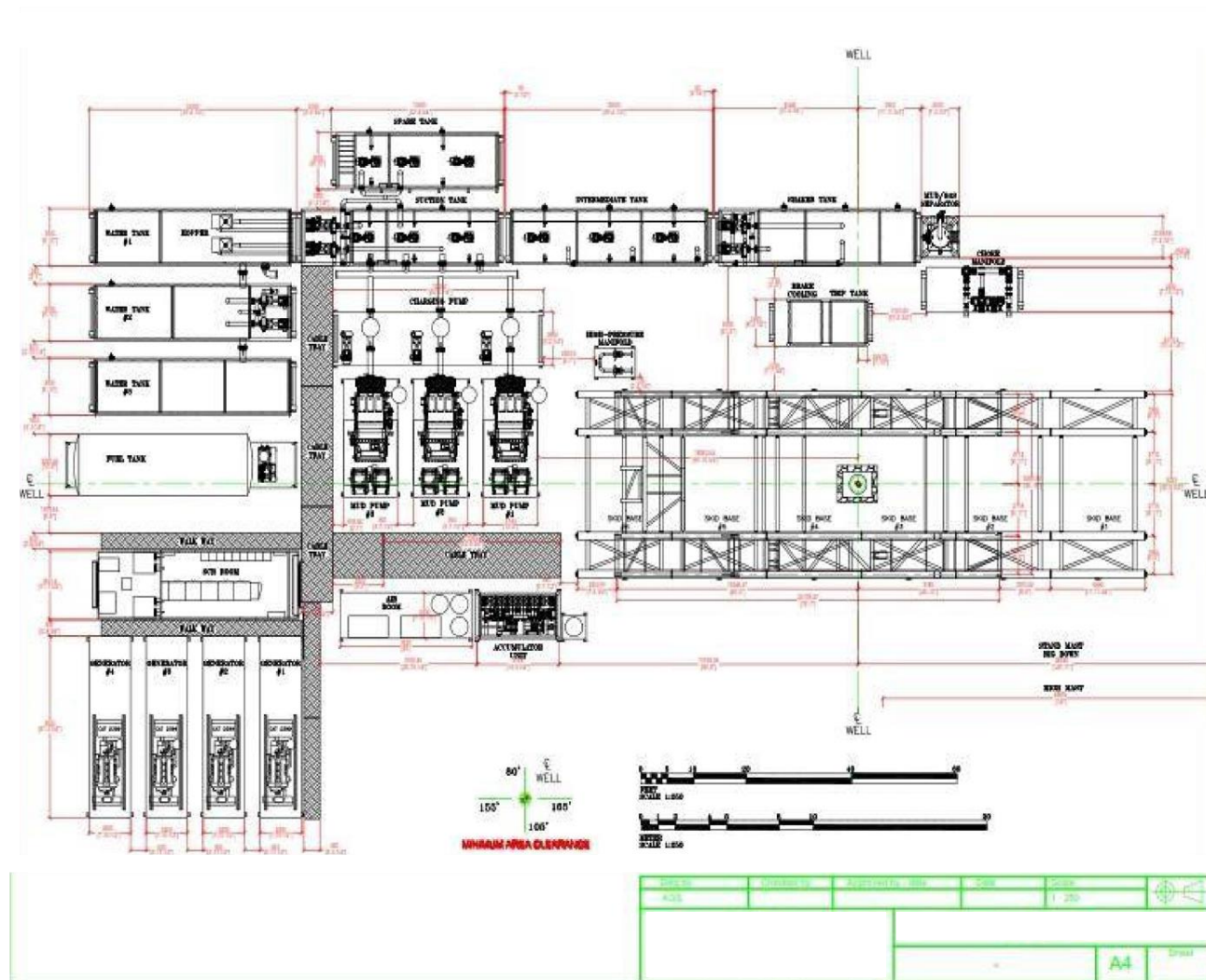
CAMP EQUIPMENT

TBD



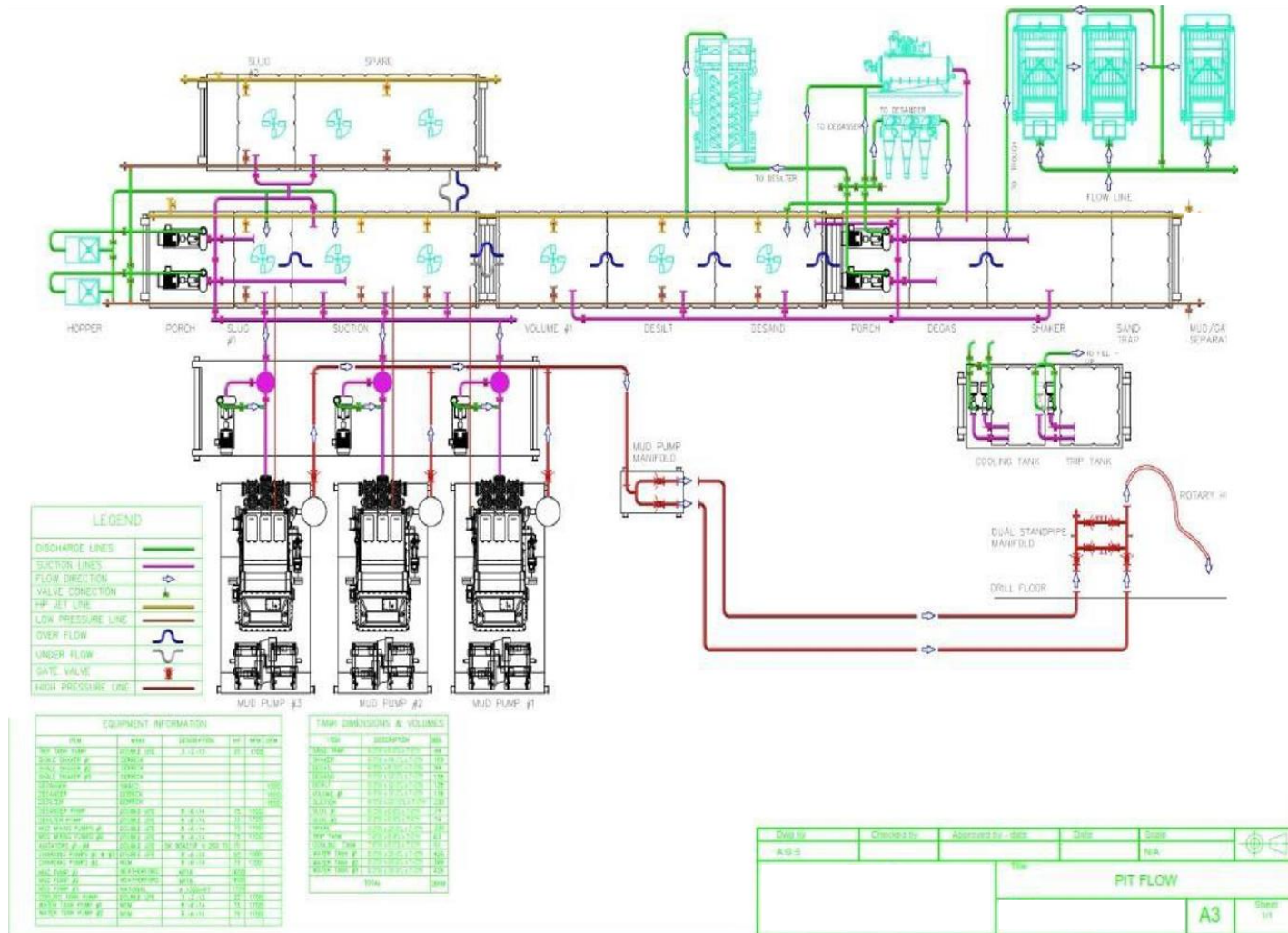
This document is the confidential and proprietary property of VIDA BEM LLC. It may contain technical information, service descriptions, and commercial cost estimates pertaining to VIDA BEM LLC products and services that are confidential. No part of this document may be reproduced, transmitted, or used for other than the designated purposes without prior permission of VIDA BEM LLC.

3.0 GENERAL LAYOUT

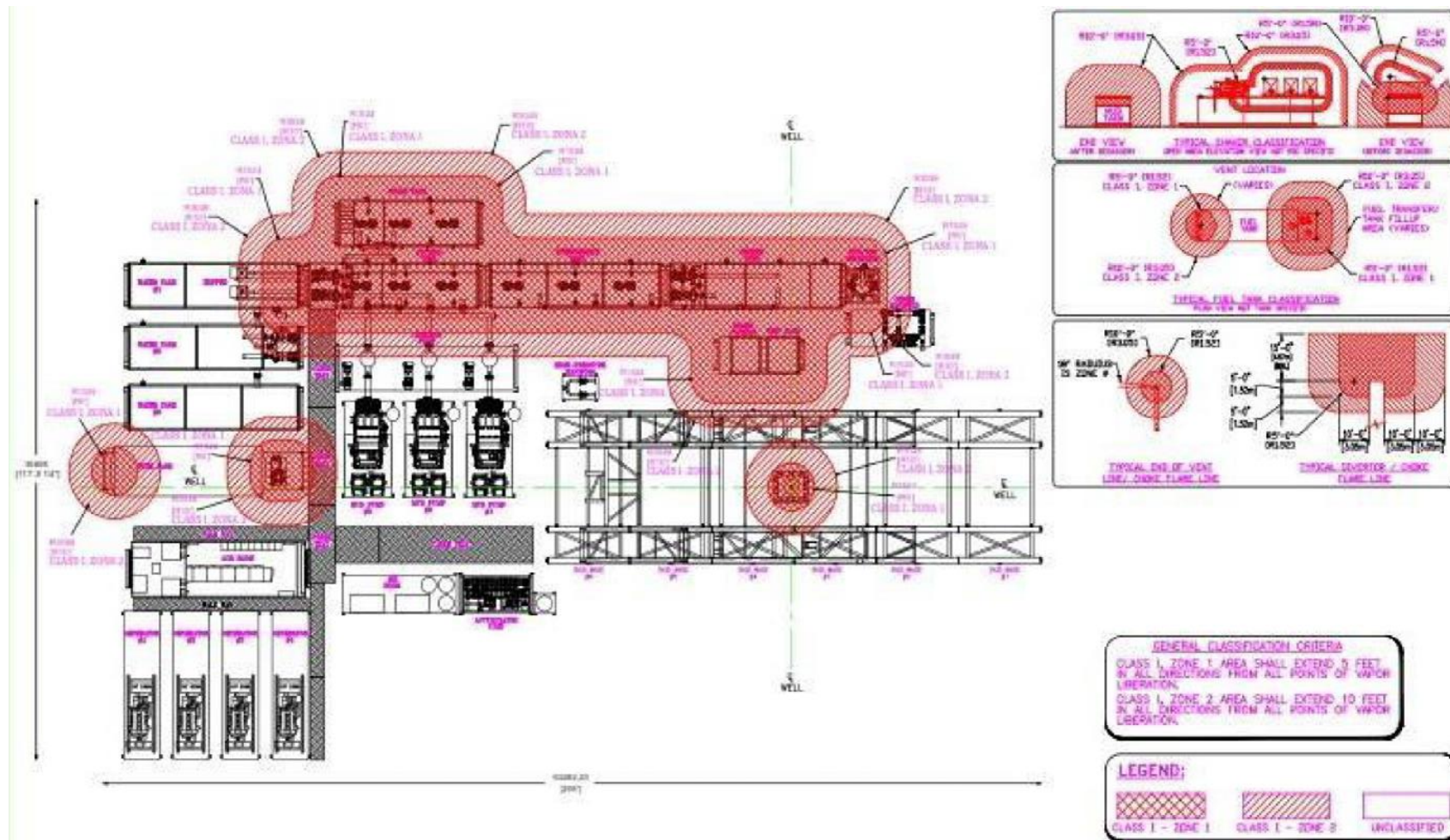


This document is the confidential and proprietary property of VIDA BEM LLC. It may contain technical information, service descriptions, and commercial cost estimates pertaining to VIDA BEM LLC products and services that are confidential. No part of this document may be reproduced, transmitted, or used for other than the designated purposes without prior permission of VIDA BEM LLC.

3.1 PIT FLOW DIAGRAM



3.2 GENERAL CLASSIFICATION CRITERIA



This document is the confidential and proprietary property of VIDA BEM LLC. It may contain technical information, service descriptions, and commercial cost estimates pertaining to VIDA BEM LLC products and services that are confidential. No part of this document may be reproduced, transmitted, or used for other than the designated purposes without prior permission of VIDA BEM LLC.

4.0 CROWN BLOCK

The crown block is a fixed part of the drilling rig hoisting system; and the crown block, together with drawworks and traveling part of the hoisting system, will help to accomplish the drilling, tripping in and out, running casing and trouble removal



MAKE/MODEL:

LEE C. MOORE 60" X 7W X 454 Ton S/N. T-3930

Built as per API Standart	API RP 8B
Max Capacity	1,000,000 lbs.
Crown Sheave	6 EA Sheave 60"
Roller Bearing	P/N LM251649 NW, Cone – LM 251610 D Cup.
Grease Seal	P/N: CE7023
Groove Line	1-1/2"
Fast Line	1 EA Sheave 60"
Roller Bearing	P/N: NA-8575-SW Cone – NA8520 B Cup.
Grease Seal	P/N: CE7019
Lifting	2 EA Snatch Block With Shackle P/N 109224
Arte	1 EA Lighting KURN-150
Lamp	1 EA Signal lamp
Dimensions	7'-10" X 7' X 8'-3"

This document is the confidential and proprietary property of VIDA BEM LLC. It may contain technical information, service descriptions, and commercial cost estimates pertaining to VIDA BEM LLC products and services that are confidential. No part of this document may be reproduced, transmitted, or used for other than the designated purposes without prior permission of VIDA BEM LLC.

5.0 MAST

Mast is the key component of the drilling rig to place the crown block, traveling block for lifting and lower drill tools, setback stand, lowering casing and handling the trouble.



MAKE/MODEL

LEE C. MOORE CANTILEVER147 FT

Built as per API Standard	API RP 4G
Gross Nominal Cap.	1,330,000 lbs.
Clear Height of Mast	147 ft
Base	30 ft
Max. Line on Traveling Block	12 lines with 1-1/2" Drilling Line
Racking Platform Cap.	242 stands of 5" drill pipe and 10 stands of 9" drill collars
Racking Platform Adjustment	80'-4" to 87'
Sheave Rising Line	6 ea. Sheave 36"
	Bearing P/N: NA 8575 SW – NA 8520 D
	Grease Seal P/N: CE7019
Wire Rope Rising Line	2-1/4" Wire rope, Open spelter socket-Open Length 142ft (1) ea.
	2-1/4" Wire rope, Open Spelter socket-Close Spelter Socket. Length 123 ft. (1) ea.
	2-1/4" Wire rope, Open spelter socket-Closed Spelter Socket. Length 60 ft (2 ea.)

This document is the confidential and proprietary property of VIDA BEM LLC. It may contain technical information, service descriptions, and commercial cost estimates pertaining to VIDA BEM LLC products and services that are confidential. No part of this document may be reproduced, transmitted, or used for other than the designated purposes without prior permission of VIDA BEM LLC.

6.0 SUBSTRUCTURE

Substructures are the structural components of land and water-based oil platforms which support the derrick, mast, or other rig components, as well as providing storage space below the main deck.



MAKE/MODEL

LEE C. MOORE BHL SELF ELEVATING 25 FT HEIGHT FLOOR + 5 FT BASE SKIDDING SYSTEM

Built as per API Standard	API RP 4G
Casing Load	1,000,000 lbs.
Set Back Capacity	600,000 lbs.
Clear Height	30ft (25ft height + 5 ft base skidding beam)
Clear height under rotary beams	26 ft
BOP Handling & Lifting System	Tracking beams mounted Ingersoll Rand 25 Ton (2 each)
Dimension Structure	72'-7" X 31'-10" X 25'
Dimension Base Skidding	107'-10" x 32'-1" x 5'
Hydraulic Jack Skidding	4 each
Stairway	2 each
Stairway With Ramp	L: 1280 cm, W: 253cm, H:96 cm (1each)
Dog House	1 Each
Cat Walk	L: 1842 ca, W: 140cm, H: 102cm (1 Unit)

This document is the confidential and proprietary property of VIDA BEM LLC. It may contain technical information, service descriptions, and commercial cost estimates pertaining to VIDA BEM LLC products and services that are confidential. No part of this document may be reproduced, transmitted, or used for other than the designated purposes without prior permission of VIDA BEM LLC.

7.0 DRAWWORKS

Drawworks is the primary hoisting machinery component of a rotary drilling rig. Its main function is to provide a means of raising and lowering the traveling block. The wire-rope drill line winds on the drawworks drum and over the crown block to the traveling block, allowing the drill string to be moved up and down as the drum turns.



MAKE/MODEL

NATIONAL 1320 UE (2000HP) S/N: 1148N

HP Rating	2000 HP
Catheads	National B-1, Two (2), Break-out and Make-up Torque Tight
Hoisting Capacity	1,044,500 lbs.
Max Drilling Depth	20,000 ft
Max Line Pull	98,900 lbs.
Main Drum Groove	1-1/2"
Universal Disc Brake	1 National Type 1320 UDBE drawwork EPL-872
	1 Each Hydraulic power unit universal disk Brake P/N 2110148
Crown Block Safety Device	1 each Crown Block Monitoring Electronic System (Anti fall collision)
Automatic Emergency Braking	
Dimensions	25' X 13'-11" x 9'-6"

This document is the confidential and proprietary property of VIDA BEM LLC. It may contain technical information, service descriptions, and commercial cost estimates pertaining to VIDA BEM LLC products and services that are confidential. No part of this document may be reproduced, transmitted, or used for other than the designated purposes without prior permission of VIDA BEM LLC.

8.0 DRAWWORKS POWER

DC Traction Motors (2 each)



MAKE / MODEL

GENERAL ELECTRIC GE752 MOTOR SERIES

1.0 DC DW-A	
HP Rating	1000 HP
Make/Type	GE752 Motor Series
Serial Number	7503404
Electric Blower Motor	
HP Rating	10 HP
Make/Type	Marathon Electric U063A215TTGN6501
Serial Number	C0310449 04/27-06
2.0 DC DW-A	
HP Rating	1000 HP
Make/Type	GE752 Motor Series
Serial Number	
Electric Blower Motor	
HP Rating	10 HP
Make/Type	Marathon Electric U063A215TTGN6501
Serial Number	C0310449 04/27-08

This document is the confidential and proprietary property of VIDA BEM LLC. It may contain technical information, service descriptions, and commercial cost estimates pertaining to VIDA BEM LLC products and services that are confidential. No part of this document may be reproduced, transmitted, or used for other than the designated purposes without prior permission of VIDA BEM LLC.

9.0 AUXILLARY BRAKE



MAKE / MODEL

BAYLOR ELMAGCO 7040

Torque at 50 RPM (HOT)	84,000 lbs./ft
Make/Type	Baylor Company Elmagco 7040
Serial Number	10062W
Input Volts	250 VDC
Input Amps	72
Max Rpm	375
Cooling System	Water
Max Temp	165 F
Drilling Depth Capacity	20,000 ft (with 20 lbs./ft drill pipe)
Number of Magnets	2
Number of Coils	4
Shaft Size	7-1/2" O.D. with 1-1/4" dia. Taper per foot
Bearing	2 each Spherical Roller Bearings. P/N 1030-20-0002

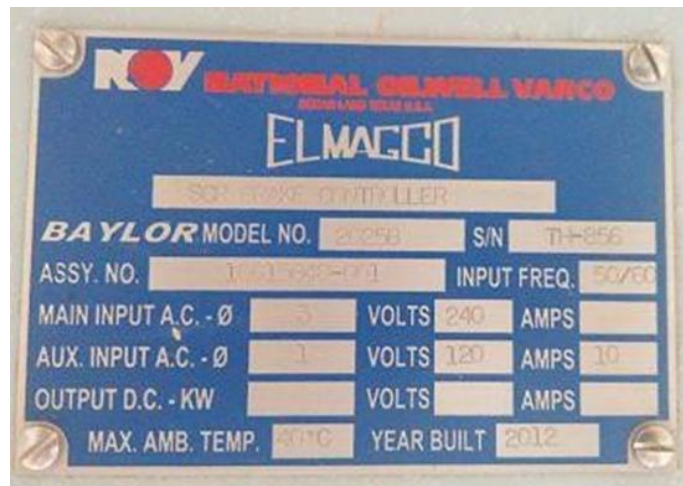
This document is the confidential and proprietary property of VIDA BEM LLC. It may contain technical information, service descriptions, and commercial cost estimates pertaining to VIDA BEM LLC products and services that are confidential. No part of this document may be reproduced, transmitted, or used for other than the designated purposes without prior permission of VIDA BEM LLC.

10.0 BRAKE CONTROL SYSTEM



BRAKE CONTROLLER SYSTEM

Make/Type	National Oilwell Varco Elmagco Baylor 2025B
Serial Number	TH-856
Input Frequency	50/60
Input Voltage	240
Assembly Number	10015648-001
Max Temp	40 C



This document is the confidential and proprietary property of VIDA BEM LLC. It may contain technical information, service descriptions, and commercial cost estimates pertaining to VIDA BEM LLC products and services that are confidential. No part of this document may be reproduced, transmitted, or used for other than the designated purposes without prior permission of VIDA BEM LLC.

11.0 COOLING SYSTEM



MAKE / MODEL

BRAKE COOLING

Capacity	51 bbls.
Make/Type	Air Blower System Electric
Dimensions	7'-7" X 6' X 7'
Brake Cooling Pump No 1	
Motor Electric	Marathon Electric E547 284TTGN6533
Rating HP	20 HP
Serial Number	C0185417 02/14/05
Centrifugal	Double life 118
Serial Number	14715
Size	3" X 2" X 8"
Brake Cooling Pump No 2	
Motor Electric	Marathon Electric E547 284TTGN6533
Rating HP	20 HP
Serial Number	C0185417 02/14/02
Centrifugal	Double life 118
Serial Number	14716
Size	3" X 2" X 8"

This document is the confidential and proprietary property of VIDA BEM LLC. It may contain technical information, service descriptions, and commercial cost estimates pertaining to VIDA BEM LLC products and services that are confidential. No part of this document may be reproduced, transmitted, or used for other than the designated purposes without prior permission of VIDA BEM LLC.

12.0 DRILLERS CONSOLE

NATIONAL® TYPE 1320-UE DRAWWORKS

RATED FOR 2000 COMBINED MOTOR HORSEPOWER
MAXIMUM RECOMMENDED LOADS

DRUM CLUTCH		LOW		HIGH	
TRANSMISSION		LOW	HIGH	LOW	HIGH
TOTAL LOAD — THOUSANDS POUNDS	8 LINES	6 6 0	4 1 5	2 7 0	1 7 0
	10 LINES	8 0 5	5 0 5	3 3 0	2 0 5
	12 LINES	9 4 0	5 9 0	3 8 0	2 4 0

THESE LOADS ARE THE HEAVIEST THAT CAN BE HANDLED WITHIN THE DESIGNED CAPACITY OF THE DRAWWORKS REGARDLESS OF THE POWER AVAILABLE. WITH LESS THAN 2000 HORSEPOWER, LOADS MAY BE LIMITED BY MOTOR HORSEPOWER.

National Supply Company

Division of Armco Steel Corporation
PITTSBURGH, U.S.A.

646024

MAKE / MODEL:

NATIONAL –OILWELL

S/N : T-2451 & T-2488

Auxiliary Control Cabinet	1 Each P/N 649873
Main Control Collum	1 Each P/N 703305-9G
Monitor PLC	1 Each SIEMENS
Serial Number	T-2451 and T-2488

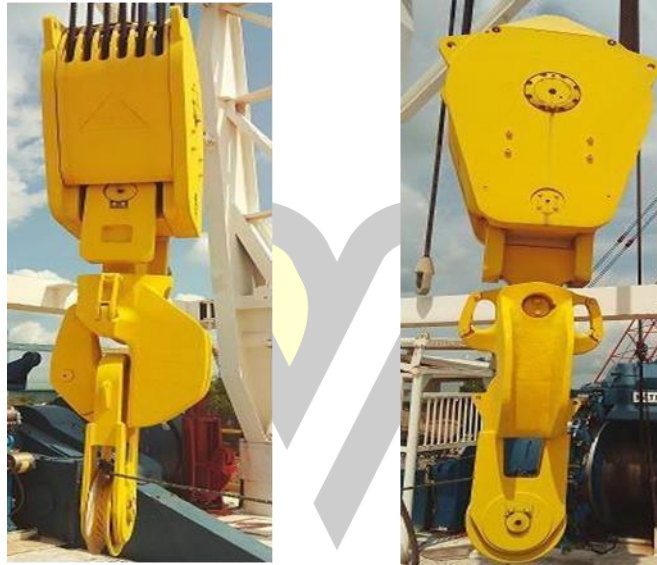
This document is the confidential and proprietary property of VIDA BEM LLC. It may contain technical information, service descriptions, and commercial cost estimates pertaining to VIDA BEM LLC products and services that are confidential. No part of this document may be reproduced, transmitted, or used for other than the designated purposes without prior permission of VIDA BEM LLC.

13.0 HOISTING EQUIPMENT

Traveling blocks are one of the hoisting equipment of drilling rig. They are the traveling system of drilling rig.

During normal drilling operation, they are mainly used for suspending the drill stem.

Traveling blocks are available for use with hooks that meet API specifications or are equivalent to API Spec.



MAKE/MODEL

CONTINENTAL EMSCO RA-52-6 HOOK BJ 5500

Built as per API Standard	API RP 8B
Hook Load Capacity	1,000,000 lbs.
Traveling Block Sheave	6 Each 52" Roller Bearing P/N LM 249747 NW, Cone – LM 249710 D Cup. Grease Seal P/N: CE7023
Hook Model	BJ 5500 (500 Ton)
Groove Line Size	1-1/2"
Shaft Center Pin Diameter	10"
Equalizer	1 each
Dimensions	13'-4" X 4'-8" X 2'-8"
Serial Number	121

This document is the confidential and proprietary property of VIDA BEM LLC. It may contain technical information, service descriptions, and commercial cost estimates pertaining to VIDA BEM LLC products and services that are confidential. No part of this document may be reproduced, transmitted, or used for other than the designated purposes without prior permission of VIDA BEM LLC.

14.0 DEADLINE ANCHOR

Deadline anchor is used to tie down the drill line and measure the load suspended from the top drive (i.e., hook load). The wire drum attached to the anchor is designed to rotate during a slip-and-cut procedure.



MAKE / MODEL

NATIONAL OILWELL type EB S/N: T-5504

Built as per API standard	API RP 8B
Load Cell Effective Area	36,767 Inches
Line Pull Capacity	100,000 lbs.
Drum Diameter	28"
Wire Line Size	1-1/4" , 1-3/8" , 1-1/2" up to 1-5/8"
Dial Part Line	8, 10, 12, 14
Load Sensor	National E80 Tension S/N: 3408
Weight Indicator Model	75/100

This document is the confidential and proprietary property of VIDA BEM LLC. It may contain technical information, service descriptions, and commercial cost estimates pertaining to VIDA BEM LLC products and services that are confidential. No part of this document may be reproduced, transmitted, or used for other than the designated purposes without prior permission of VIDA BEM LLC.

15.0 DRILLING LINE

A wire rope hoisting line, reeved on sheaves of the crown block and traveling block (in effect a block and tackle). Its primary purpose is to hoist or lower drill pipe or casing from or into a well. Also, a wire rope used to support the drilling tools.



MAKE / MODEL:

BLUE STRAND WIRE ROPE 6 X 19S IWRC

Built as per API Standard	API Spec. 9A
Length of Each	7,500 ft
Nominal Diameter	1-1/2"
Measured Diameter	39.16mm
Construction	6 X 19S
Main Core	IWRC
Lay	RHOL
Tensile	EIPS Ung
Minimum Breaking Force	103.0 Ton (1010 kn)
Measured Breaking Force	104.0 Ton (1020 kn)

This document is the confidential and proprietary property of VIDA BEM LLC. It may contain technical information, service descriptions, and commercial cost estimates pertaining to VIDA BEM LLC products and services that are confidential. No part of this document may be reproduced, transmitted, or used for other than the designated purposes without prior permission of VIDA BEM LLC.

16.0 AIR HOIST



1 Unit Ingersoll Rand K4UL 4,000lbs	1 Unit Ingersoll Rand K6UL 10,000lbs
Brand: Ingersoll Rand	Brand: Ingersoll Rand
Model: K4UL	Model: K6UL
Weight: 1,265 lbs.	Weight: 1,550 lbs.
Line Pull: 4,000 lbs (1,8 ton) Line Speed 125 (fpm)	Line Pull: 10,000 lbs (4,5 ton) Line Speed 55 (fpm)
Nominal Capacity-Drum Root Diameter: 8-5/8" Drum	Nominal Capacity-Drum Root Diameter: 13" Drum
Length 20"	Length 14-1/8"
Drum Flange 19"	Drum Flange 23-1/2"
Wire Rope Diameter: 1/2"	Rope Diameter: 3/4"
Motor HP: 16	Motor HP: 247
Average CFM Required: 480	Average CFM Required: 600
Full Drum Capacity 1,427' -1/2" wire rope	Full Drum Capacity 1,070' -3/4" wire rope
First Drum Layer @ 90 PSI, Max Stall Pull 10,000 lbs.	First Drum Layer @ 90 PSI, Max Stall Pull 15,000 lbs.
Top Drum Layer @ 90 PSI, 4,000 lbs.	Top Drum Layer @ 90 PSI, 10,000 lbs.

This document is the confidential and proprietary property of VIDA BEM LLC. It may contain technical information, service descriptions, and commercial cost estimates pertaining to VIDA BEM LLC products and services that are confidential. No part of this document may be reproduced, transmitted, or used for other than the designated purposes without prior permission of VIDA BEM LLC.

17.0 MAN RIDING WINCH/MANLIFTER



MANLIFTER 336 Lbs (152kg) CAPACITY

Brand: RAM WINCH HOIST Model	AML366AK
Weight	1250 lbs.
Line Pull	336 lbs.
Line Speed	90 ft/mt
Drum Length	24" Wire Rope Diameter 3/8"
Drum Storage	250 ft Average
CFM Required	110 Arg.
Length Drill Floor	425

This document is the confidential and proprietary property of VIDA BEM LLC. It may contain technical information, service descriptions, and commercial cost estimates pertaining to VIDA BEM LLC products and services that are confidential. No part of this document may be reproduced, transmitted, or used for other than the designated purposes without prior permission of VIDA BEM LLC.

18.0 ROTARY EQUIPMENT

A rotary rig is the equipment used for drilling in most wells, which includes an engine and a hoisting, rotating and mud circulating system.

ROTARY TABLE

A rotary table is a mechanical device on a drilling rig that provides clockwise rotational force to the drill string to facilitate the process of drilling a borehole. Rotary speed is the number of times the rotary table makes one full revolution in one minute (rpm).



MAKE / MODEL

NATIONAL OILWELL D-375 ROTARY

Built as per API Standard	API Spec. 7K
Size Opening on Table	37-1/2"
Max. Torque	43,200 ft/lbs. at 100 RPM
Max. Speed	350 RPM
Static Load Capacity	1,400,000 lbs.
Dimensions	90" X 76" X 29"

This document is the confidential and proprietary property of VIDA BEM LLC. It may contain technical information, service descriptions, and commercial cost estimates pertaining to VIDA BEM LLC products and services that are confidential. No part of this document may be reproduced, transmitted, or used for other than the designated purposes without prior permission of VIDA BEM LLC.

19.0 MASTER BUSHING and BOWLS



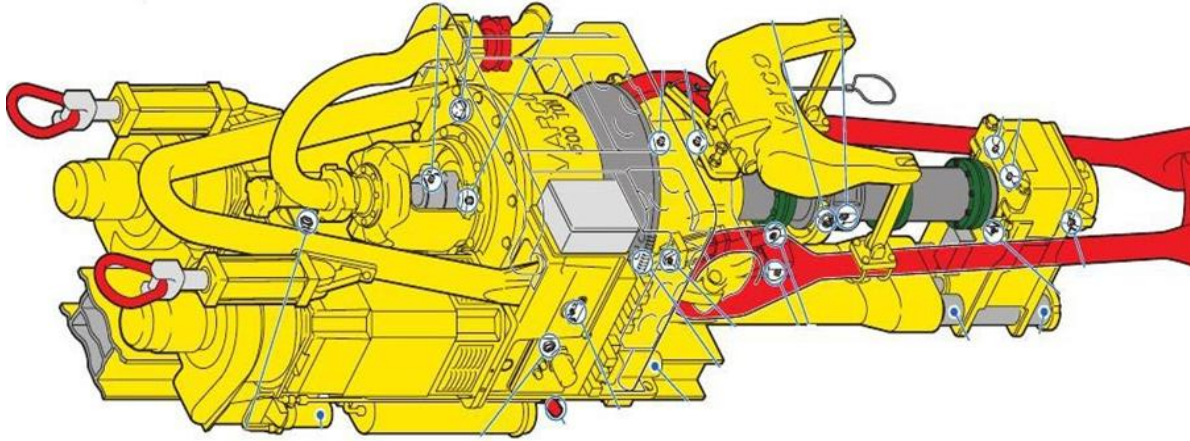
Make/Type	MPCH Series (NOV)
Static Load Capacity	500 Ton
Master Bushing	To run casing 4-1/2", 7", 9-5/8", 13-5/8", 20"
Insert Bowls	To run drill string 3-1/2", 5", 6-1/2", 6-3/4", 8"
Maximum Speed	350 RPM
Serial Number	162

VIDA BEM

This document is the confidential and proprietary property of VIDA BEM LLC. It may contain technical information, service descriptions, and commercial cost estimates pertaining to VIDA BEM LLC products and services that are confidential. No part of this document may be reproduced, transmitted, or used for other than the designated purposes without prior permission of VIDA BEM LLC.

20.0 TOP DRIVE

A top drive is a mechanical device on a drilling rig that provides clockwise torque to the drill string to drill a borehole. It is an alternative to the rotary table and kelly drive. It is located at the swivel's place below the traveling block and moves vertically up and down the derrick.



MAKE / MODEL

NATIONAL OIL WELL VARCO TDS-11SA

Drive Type	Electrical
Pipe Range OD	3-1/2" to 5"
Hoist Capacity	500 Ton
Horse Power	800 HP
Drilling Torque	37,100 ft at 110 RPM
Make Up Torque	MAX 55,000 ft/lbs.
Break Out Torque	MAX 65,000 ft/lbs.
Pressure Rating	7,500 PSI
RPM Rating	228 RPM

This document is the confidential and proprietary property of VIDA BEM LLC. It may contain technical information, service descriptions, and commercial cost estimates pertaining to VIDA BEM LLC products and services that are confidential. No part of this document may be reproduced, transmitted, or used for other than the designated purposes without prior permission of VIDA BEM LLC.

21.0 SWIVEL and ACCESSORIES



MAKE / MODEL

NATIONAL OILWELL P- 500

NATIONAL OILWELL P- 500	
Built as per API Standard	API RP 8B
Rating Capacity	500 Ton
Working Pressure	5000 PSI
Gooseneck Opening	3" Quick Opening
KELLY	
Type	Hexagonal
Size	5-1/4" and 3-1/2"
Length	40 ft
KELLY SPINER	
Make/Type	OWI 1500
HP Rating	35 HP
Maximum Torque	105 ft-lbs
Pressure Rating	120 PSI
Maximum Speed	200 RPM
KELLY BUSHING	
Built as per API Standard	API Spec. 7K
Make/Type	National Oilwell
Model/Type	27-HDP Heavy Duty
Size of Kelly	3' to 6"
CONNECTION	
Upper Kelly Cock	Type Ball, Size 8", Connection 6-5/8" LH
Lower Kelly Cock	Type Ball, Size 5" and 3-1/2", Connection 4-1/2" IF 3-1/2" IF
Kelly Saver Sub	Size 5" and 3-1/2", Connection 4-1/2" IF and 3-1/2" IF

This document is the confidential and proprietary property of VIDA BEM LLC. It may contain technical information, service descriptions, and commercial cost estimates pertaining to VIDA BEM LLC products and services that are confidential. No part of this document may be reproduced, transmitted, or used for other than the designated purposes without prior permission of VIDA BEM LLC.

22.0 WELL CONTROL EQUIPMENT

A blowout preventer (BOP) is a large, specialized valve or similar mechanical device, used to seal, control and monitor oil and gas wells to prevent blowouts, the uncontrolled release of crude oil and/or natural gas from a well. They are usually installed in stacks of other valves.

Blowout preventers were developed to cope with extreme erratic pressures and uncontrolled flow (formation kick) emanating from a well reservoir during drilling. Kicks can lead to a potentially catastrophic event known as a blowout. In addition to controlling the downhole (occurring in the drilled hole) pressure and the flow of oil and gas, blowout preventers are intended to prevent tubing (e.g. drill pipe and well casing), tools and drilling fluid from being blown out of the wellbore (also known as bore hole, the hole leading to the reservoir) when a blowout threatens. Blowout preventers are critical to the safety of crew, rig (the equipment system used to drill a wellbore) and environment, and to the monitoring and maintenance of well integrity; thus blowout preventers are intended to provide fail-safety to the systems that include them.



This document is the confidential and proprietary property of VIDA BEM LLC. It may contain technical information, service descriptions, and commercial cost estimates pertaining to VIDA BEM LLC products and services that are confidential. No part of this document may be reproduced, transmitted, or used for other than the designated purposes without prior permission of VIDA BEM LLC.

23.0 ACCUMULATOR UNIT

An accumulator or Koomey unit is a unit used to hydraulically operate Rams BOP, Annular BOP, HCR and some hydraulic equipment. There are several of high-pressure cylinders that store gas (in bladders) and hydraulic fluid or water under pressure for hydraulic activated systems. The primary purpose of this unit is to supply hydraulic power to the BOP stack in order to close/open BOP stack for both normal operational and emergency situation. Stored hydraulic in the system can provide hydraulic power to close BOPs in well control operation, therefore, kick volume will be minimized. The accumulator should have sufficient volume to close/open all preventers and accumulator pressure must be maintained all time. According to API RP53, your reservoir tank should have a total volume at least 2 times of usable volume to close all BOP equipment.



MAKE / MODEL

KOOMEY TYPE 80 MC240-11ST S/N 15385-01

Built as per API Standard	API Spec. 16D
Capacity of Reservoir Tank	350 Gallons
Accumulator Bottles	24 Bottles
Maximum Number of Valves	7
Working Pressure	3,000 PSI
Air Operated Pump Modules	3
Electric Driven Pump	1 Unit
Model/Type	US Electrical 256T Serial Number: R-7509-00-229
HP Rating	20 HP
Conventional Air Remote Panel	1 Unit on the rig floor (S/N 0326)

This document is the confidential and proprietary property of VIDA BEM LLC. It may contain technical information, service descriptions, and commercial cost estimates pertaining to VIDA BEM LLC products and services that are confidential. No part of this document may be reproduced, transmitted, or used for other than the designated purposes without prior permission of VIDA BEM LLC.

24.0 CHOKE MANIFOLD

A choke manifold is used to lower the pressure from the well head. It consists of a set of high-pressure valves and at least two chokes. These chokes can be fixed or adjustable or a mix of both. The redundancy is needed so that if one choke has to be taken out of service, the flow can be directed through another one. By lowering pressure, the retrieved gases can be flared off on site.



MAKE / MODEL

CHOKE MANIFOLD NL SHAFFER 15,000 PSI

Built as Per API Standard	API Spec. 6A
Choke Line Size	3-1/16"
Material Class	EE-NL
Pressure Rating	15,000 PSI WP
Manifold Choke Size	2-1/16" – 15,000 PSI
Number of Inlets	2 Inlets
Number of Outlets	3 Outlets
Hydraulic Choke	2 each, Size 2-1/16" – 15,000 PSI
Choke Control Panel	Not Available

This document is the confidential and proprietary property of VIDA BEM LLC. It may contain technical information, service descriptions, and commercial cost estimates pertaining to VIDA BEM LLC products and services that are confidential. No part of this document may be reproduced, transmitted, or used for other than the designated purposes without prior permission of VIDA BEM LLC.

25.0 POOR BOY MUD GAS SEPARATOR

Mud Gas Separator is commonly called a gas-buster or poor boy degasser. It captures and separates the large volumes of free gas within the drilling fluid. If there is a "kick" situation, this vessel separates the mud and the gas by allowing it to flow over baffle plates. The gas then is forced to flow through a line, venting to a flare. A "kick" situation happens when the annular hydrostatic pressure in a drilling well temporarily (and usually relatively suddenly) falls below that of the formation, or pore, pressure in a permeable section downhole, and before control of the situation is lost.



MAKE / MODEL

GN Solids Control GNZYQ1000 S/N:41301003

Built as per API Standard	API Spec. 16A
Capacity	200-280 m3/h
Tank Diameter	1000 mm
Tank Pressure	<1.0 Mpa
Inlet Size	DN 150 (6")
Outlet Size	DN 250 (10")
Vent Line	DN 200 (8")
Dimensions	2000 mm X 2000 mm X 8087 mm
Weight	3394 kg

This document is the confidential and proprietary property of VIDA BEM LLC. It may contain technical information, service descriptions, and commercial cost estimates pertaining to VIDA BEM LLC products and services that are confidential. No part of this document may be reproduced, transmitted, or used for other than the designated purposes without prior permission of VIDA BEM LLC.

26.0 RIG POWER/GENERATORS



CATERPILLAR D399 PC	
SERIAL NUMBER	36Z02081
SERIAL NUMBER	36Z01742
SERIAL NUMBER	36Z02080
SERIAL NUMBER	36Z01743

Built as per API Standard	API RP 07C-11F
Fuel Type	Diesel
Governor	Woodward E8250
Engine Arrangement	5N7278
Air Cleaner	Dry Type
Starter	24 Volt Electric Starter
Cooling	Radiator Cooled
RPM	1,200
Horse Power Rating	1,260 HP
Voltage	227/480
Frequency	60 Cycles/HZ

This document is the confidential and proprietary property of VIDA BEM LLC. It may contain technical information, service descriptions, and commercial cost estimates pertaining to VIDA BEM LLC products and services that are confidential. No part of this document may be reproduced, transmitted, or used for other than the designated purposes without prior permission of VIDA BEM LLC.

27.0 GENERATOR



KATO GENERATOR	
SERIAL NUMBER	84891-1
SERIAL NUMBER	84891-2
SERIAL NUMBER	84891-3
SERIAL NUMBER	84891-4

Built as per API Standard	API RP 07C-11F
Type No	21022
Model Number	1030-680361111
KVA Cont.	1,287.5
RPM	1,200
Phase	3
Amperes	1,240
Volt	247/600
EXC. Arm "C" Number	12090-42
EXC. Fld "C" Number	12058-42
HZ	60
Fuel Tank Capacity 100 TON	Not Available

This document is the confidential and proprietary property of VIDA BEM LLC. It may contain technical information, service descriptions, and commercial cost estimates pertaining to VIDA BEM LLC products and services that are confidential. No part of this document may be reproduced, transmitted, or used for other than the designated purposes without prior permission of VIDA BEM LLC.

28.0 POWER DISTRIBUTION

SCR/VFD SYSTEM

Power Control Rooms are perfectly aligned AC or DC based power distribution systems built from self-developed main components and are designed for handling rough drilling applications.



MAKE / MODEL

ROSS HILL 1201 S/N :5550-2

Date of Manufacture	10-1980
Generator Cubicel	4 Unit
SCR Cubicel	5 Unit
Lighting Cubicel	1 Unit
MCC Control Panel	66
Frequency	60 HZ
MCC Unit Voltage	480 VOLTS
Lighting Transformer	150 Kva, 600V/120V
Feeder Transformer	600/480 Volt, 1600 amp
Cooling Air Conditioner	A/C #1
Model	D2EZ060A464
Serial Number	N1K0312188
Cooling Air Conditioner	A/C #2
Model	D2EZ060A464
Serial Number	N1B1787902

This document is the confidential and proprietary property of VIDA BEM LLC. It may contain technical information, service descriptions, and commercial cost estimates pertaining to VIDA BEM LLC products and services that are confidential. No part of this document may be reproduced, transmitted, or used for other than the designated purposes without prior permission of VIDA BEM LLC.

29.0 RIG LIGHTING



EXPLOSION AND GAS PROOF LIGHTING

Make / Model: AZZ R-A-L XP SERIES XP800-4-2L-U	
Mast Derrick	8 Each
Substructure	4 Each
Accumulator Unit	1 Each
Mud Pump Area	3 Each (not available)
Water Tank	3 Each
Shaker Tank	3 Each
Intermediate Tank	3 Each (not available)
Active Tank	3 Each (not available)
Spare tank	2 Each (not available)
Mixing Pump	1 Each (not available)
Desilter Pump	1 Each (not available)
Dog House	3 Each
Air Compressor	2 Each
Make / Model: AZZ R-A- L AFL110S48 T66	
Rig Floor	6 Each
Choke Manifold	2 Each (not available)
Tank	1 Each (not available)
Catwalk/Piperack	6 Each
EMERGENCY LIGHTS	
Make / Model: AZZ R-A-L XPEM(XP800-4-2L-U-EM)	
Engine Room	4 Each (not available)
Rig Floor	1 Each (not available)
Koomey Unit	1 Each (not available)
Dog House	1 Each (not available)
Mud Tank	2 Each (not available)
Walk Way/Stairs	2 Each (not available)
NOTE	
GENERATOR: AZZ R-A-L MAR8004UL	24 Each

This document is the confidential and proprietary property of VIDA BEM LLC. It may contain technical information, service descriptions, and commercial cost estimates pertaining to VIDA BEM LLC products and services that are confidential. No part of this document may be reproduced, transmitted, or used for other than the designated purposes without prior permission of VIDA BEM LLC.

30.0 MUD PUMP & HIGH-PRESSURE LINES

A mud pump (sometimes referred to as a mud drilling pump or drilling mud pump), is a reciprocating piston/plunger pump designed to circulate drilling fluid under high pressure (up to 7,500 psi (52,000 kPa)) down the drill string and back up the annulus. A mud pump is an important part of the equipment used for oil well drilling



MAKE / MODEL

WEATHERFORD MP16 S/N :W-75

MUD PUMP #1	
Built as per API Standard	
Rated Power	1600 HP
Max Crank Speed	120 RPM
Stroke Length	12"
Max Piston Size	7"
Pulsation Dampener	HYDRIL K20-5000 (20 GAL) S/N: 145653
Max Rated Pressure	5000 PSI
Fluid End	FB1600
Suction Connections	12" Flanged (3)
Discharge Connections	5-1/8" (2)
Internal Gear Ratio	4.230:1
Crankcase Oil Capacity	100 GAL
Input Shaft Diameter	8-1/2"
Rod Washer	Marathon Electric 5HP, S/N: C0165444
Centrifugal Pump	MCM 118, 1"X1.5" , S/N: 4963

This document is the confidential and proprietary property of VIDA BEM LLC. It may contain technical information, service descriptions, and commercial cost estimates pertaining to VIDA BEM LLC products and services that are confidential. No part of this document may be reproduced, transmitted, or used for other than the designated purposes without prior permission of VIDA BEM LLC.

30.1 PERFORMANCE RATING

MP16		Pump speed (spm)	120	115	110	100	90	80
		Input power (HP/kW)*	1,568 1,169	1,502 1,121	1,437 1,072	1,306 975	1,176 877	1,045 780
Piston size (in.)	Rated pressure (psi/MPa)	Displacement (gal/rev)	Output (gal/min, bbl/min)					
7.00	3,360 23.2	5.998	720 17.1	690 16.4	660 15.7	600 14.3	540 12.9	480 11.4
6.50	3,900 26.9	5.171	621 14.8	595 14.2	569 13.5	517 12.3	465 11.1	414 9.9
6.00	4,575 31.5	4.406	529 12.6	507 12.1	485 11.5	441 10.5	397 9.4	353 8.4
5.75	4,980 34.3	4.047	486 11.6	465 11.1	445 10.6	405 9.6	364 8.7	324 7.7
5.50	5,000 34.5	3.703	444 10.6	426 10.1	407 9.7	370 8.8	333 7.9	296 7.1
5.25	5,000 34.5	3.374	405 9.6	388 9.2	371 8.8	337 8.0	304 7.2	270 6.4

VIDA BEM

This document is the confidential and proprietary property of VIDA BEM LLC. It may contain technical information, service descriptions, and commercial cost estimates pertaining to VIDA BEM LLC products and services that are confidential. No part of this document may be reproduced, transmitted, or used for other than the designated purposes without prior permission of VIDA BEM LLC.

30.2 MUD PUMP POWER #1



MAKE / MODEL

GENERAL ELECTRIC GE752 MOTOR SERIES

#1 DC MP1	
HP Rating	1,000 HP
Make/Type	GE752 Motor Series
S/N	41540270
Electric Motor Blower	
HP Rating	10 HP
Make/Type	Marathon Electric U063A 215TTGN6501
S/N	C0366119
#2 DC MP1	
HP Rating	1,000 HP
Make/Type	GE752 Motor Series
S/N	50720499
Electric Motor Blower	
HP Rating	10 HP
Make/Type	Marathon Electric U063A 215TTGN6501
S/N	C0293631

This document is the confidential and proprietary property of VIDA BEM LLC. It may contain technical information, service descriptions, and commercial cost estimates pertaining to VIDA BEM LLC products and services that are confidential. No part of this document may be reproduced, transmitted, or used for other than the designated purposes without prior permission of VIDA BEM LLC.

30.3 MUD PUMP #2



MAKE / MODEL

WEATHERFORD MP16 S/N :W-76

MUD PUMP #1	
Built as per API Standard	
Rated Power	1600 HP
Max Crank Speed	120 RPM
Stroke Length	12"
Max Piston Size	7"
Pulsation Dampener	MATTCO 5520 (20 GAL) S/N: 200456
Max Rated Pressure	5000 PSI
Fluid End	FB1600
Suction Connections	12" Flanged (3)
Discharge Connections	5-1/8" (2)
Internal Gear Ratio	4.230:1
Crankcase Oil Capacity	100 GAL
Input Shaft Diameter	8-1/2"
Rod Washer	Marathon Electric 5HP, S/N: C0165232
Centrifugal Pump	MCM 118, 1"X1.5" , S/N: 14762

This document is the confidential and proprietary property of VIDA BEM LLC. It may contain technical information, service descriptions, and commercial cost estimates pertaining to VIDA BEM LLC products and services that are confidential. No part of this document may be reproduced, transmitted, or used for other than the designated purposes without prior permission of VIDA BEM LLC.

30.4 PERFORMANCE RATING

MP16		Pump speed (spm)	120	115	110	100	90	80
		Input power (HP/kW)*	1,568 1,169	1,502 1,121	1,437 1,072	1,306 975	1,176 877	1,045 780
Piston size (in.)	Rated pressure (psi/MPa)	Displacement (gal/rev)	Output (gal/min, bbl/min)					
7.00	3,360 23.2	5.998	720 17.1	690 16.4	660 15.7	600 14.3	540 12.9	480 11.4
6.50	3,900 26.9	5.171	621 14.8	595 14.2	569 13.5	517 12.3	465 11.1	414 9.9
6.00	4,575 31.5	4.406	529 12.6	507 12.1	485 11.5	441 10.5	397 9.4	353 8.4
5.75	4,980 34.3	4.047	486 11.6	465 11.1	445 10.6	405 9.6	364 8.7	324 7.7
5.50	5,000 34.5	3.703	444 10.6	426 10.1	407 9.7	370 8.8	333 7.9	296 7.1
5.25	5,000 34.5	3.374	405 9.6	388 9.2	371 8.8	337 8.0	304 7.2	270 6.4

VIDA BEM

This document is the confidential and proprietary property of VIDA BEM LLC. It may contain technical information, service descriptions, and commercial cost estimates pertaining to VIDA BEM LLC products and services that are confidential. No part of this document may be reproduced, transmitted, or used for other than the designated purposes without prior permission of VIDA BEM LLC.

30.5 MUD PUMP POWER #2



MAKE / MODEL

GENERAL ELECTRIC GE752 MOTOR SERIES

#1 DC MP2-A	
HP Rating	1,000 HP
Make/Type	GE752 Motor Series
S/N	4773
Electric Motor Blower	
HP Rating	10 HP
Make/Type	Marathon Electric U063A 215TTGN6501
S/N	C0310449 04/27/01
#2 DC MP2-B	
HP Rating	1,000 HP
Make/Type	GE752 Motor Series
S/N	7690439
Electric Motor Blower	
HP Rating	10 HP
Make/Type	Marathon Electric U063A 215TTGN6501
S/N	C0310449 04/27/03

This document is the confidential and proprietary property of VIDA BEM LLC. It may contain technical information, service descriptions, and commercial cost estimates pertaining to VIDA BEM LLC products and services that are confidential. No part of this document may be reproduced, transmitted, or used for other than the designated purposes without prior permission of VIDA BEM LLC.

30.6 MUD PUMP #3



MAKE / MODEL

NATIONAL OIL WELL A1700-PT S/N 257

MUD PUMP #3	
Built as per API Standard	
Rated Power	1700 HP
Max Crank Speed	150 RPM
Stroke Length	12"
Max Piston Size	7-1/2"
Pulsation Dampener	MATTCO 5520 (20 GAL) S/N: 200390
Max Rated Pressure	5000 PSI
Fluid End	SW A1700-PT
Suction Connections	10" Flanged (3)
Discharge Connections	5" (2)
Internal Gear Ratio	4.5:1
Crankcase Oil Capacity	72 GAL
Input Shaft Diameter	
Rod Washer	Marathon Electric 5HP, S/N:
Centrifugal Pump	MCM 118, 1"X1.5" , S/N:

This document is the confidential and proprietary property of VIDA BEM LLC. It may contain technical information, service descriptions, and commercial cost estimates pertaining to VIDA BEM LLC products and services that are confidential. No part of this document may be reproduced, transmitted, or used for other than the designated purposes without prior permission of VIDA BEM LLC.

30.7 PERFORMANCE DATA

Performance Data ENGLISH UNITS

Piston Size Inches	Maximum Pressure PSI	DISPLACEMENT Gallons Per Minute at Pump Speeds (rpm)*				
		50	75	100	125	150
5	5000**	153	230	306	383	459
5½	4723	185	278	370	463	555
5¾	4321	202	304	405	506	607
6	3968	220	330	441	551	661
6½	3381	259	388	517	646	776
6¾	3135	279	418	558	697	837
7	2915	300	450	600	750	900
7¼	2718	322	483	643	804	965
7½	2540	344	516	689	861	1033
Brake Horsepower Input		567	850	1133	1417	1700

METRIC UNITS

Piston Size mm	Maximum Pressure kPa	DISPLACEMENT Litres Per Second at Pump Speeds (r/min)*				
		50	75	100	125	150
127	34474**	9.65	14.51	19.31	24.16	28.96
140	32564	11.67	17.54	23.34	29.21	35.02
146	29792	12.74	19.18	25.55	31.92	38.30
152	27358	13.88	20.82	27.82	34.76	41.70
165	23311	16.34	24.48	32.62	40.76	48.96
171	21615	17.60	26.37	35.20	43.97	52.81
178	20098	18.93	28.39	37.85	47.32	56.78
184	18740	20.32	30.47	40.57	50.72	60.88
191	17513	21.70	32.55	43.47	54.32	65.17
Kilowatt Input		423	634	845	1057	1268

*Based on 90% Mechanical and 100% Volumetric Efficiency

**5,000 psi (34474 kPa) is Limited to Fluid End Rating

VIDA BEM

This document is the confidential and proprietary property of VIDA BEM LLC. It may contain technical information, service descriptions, and commercial cost estimates pertaining to VIDA BEM LLC products and services that are confidential. No part of this document may be reproduced, transmitted, or used for other than the designated purposes without prior permission of VIDA BEM LLC.

30.8 MUD PUMP POWER #3



MAKE / MODEL

GENERAL ELECTRIC GE752 MOTOR SERIES

#1 DC MP3-A	
HP Rating	1,000 HP
Make/Type	GE752 Motor Series
S/N	105-257-00
Electric Motor Blower	
HP Rating	10 HP
Make/Type	Marathon Electric U063A 215TTGN6501
S/N	C0306316 05/04/02
#2 DC MP3-B	
HP Rating	1,000 HP
Make/Type	GE752 Motor Series
S/N	7503405
Electric Motor Blower	
HP Rating	10 HP
Make/Type	Marathon Electric U063A 215TTGN6501
S/N	C0306316 05/04/01

This document is the confidential and proprietary property of VIDA BEM LLC. It may contain technical information, service descriptions, and commercial cost estimates pertaining to VIDA BEM LLC products and services that are confidential. No part of this document may be reproduced, transmitted, or used for other than the designated purposes without prior permission of VIDA BEM LLC.

31.0 CHARGING PUMPS



CHARGING PUMP #1

Electric Motor	
HP Rating	50 HP
Make/Type	WEG Electric T3C
S/N	05012XP3E365T
Centrifugal	
Size	8" X 6" X 14"
Make/Type	Double Life 250
S/N	14696



CHARGING PUMP #2

Electric Motor	
HP Rating	75 HP
Make/Type	General Electric
S/N	5KE365CC205P
Centrifugal	
Size	8" X 6" X 14"
Make/Type	MCM 250
S/N	34328



CHARGING PUMP #3

Electric Motor	
HP Rating	50 HP
Make/Type	WEG Electric T3C
S/N	05012XP3E365T
Centrifugal	
Size	8" X 6" X 14"
Make/Type	Double Life 250
S/N	146860



This document is the confidential and proprietary property of VIDA BEM LLC. It may contain technical information, service descriptions, and commercial cost estimates pertaining to VIDA BEM LLC products and services that are confidential. No part of this document may be reproduced, transmitted, or used for other than the designated purposes without prior permission of VIDA BEM LLC.

32.0 HIGH PRESSURE MUD LINES



HIGH-PRESSURE DISCHARGE MANIFOLD

Built as per API Standard	API Spec 7K
Max Rated Pressure	5000 PSI
Pipe	5"
Gate Valve	2 Each
Vibrator Hose	5" – 5000 WP

This document is the confidential and proprietary property of VIDA BEM LLC. It may contain technical information, service descriptions, and commercial cost estimates pertaining to VIDA BEM LLC products and services that are confidential. No part of this document may be reproduced, transmitted, or used for other than the designated purposes without prior permission of VIDA BEM LLC.

32.1 STAND PIPE MANIFOLD

This manifold is at upstream side of the mud pumps. its purpose is to divert the flow of mud in desired path. towards the drill line or toward the drill string it also has the connection ports where pressure the temperature sensor are connected.



Built as per API Standard	API Spec 7K
Max Rated Pressure	5000 PSI
Pipe	5"
Gate Valve	6 Each

This document is the confidential and proprietary property of VIDA BEM LLC. It may contain technical information, service descriptions, and commercial cost estimates pertaining to VIDA BEM LLC products and services that are confidential. No part of this document may be reproduced, transmitted, or used for other than the designated purposes without prior permission of VIDA BEM LLC.

33.0 MUD TANK MUD HANDLING

SHAKER TANK



Max Capacity	307 bbls.
Dimension	9'-3" W X 39'-4" L X 7'-0" H
Sand Trap Cap.	61 bbls
Degasser Tank Cap	83 bbls
Shaker Suction Tank Cap.	159 bbls

33.1 SETTLING/ INTERMEDIATE TANK



Max Capacity	414 bbls (3 Compartments)
Dimension	9'-3" W X 39'-4" L X 7'-0" H
Desander Tank Cap.	138 bbls
Desilter Tank Cap.	138 bbls
Suction Tank Cap.	138 bbls

This document is the confidential and proprietary property of VIDA BEM LLC. It may contain technical information, service descriptions, and commercial cost estimates pertaining to VIDA BEM LLC products and services that are confidential. No part of this document may be reproduced, transmitted, or used for other than the designated purposes without prior permission of VIDA BEM LLC.

33.2 ACTIVE / MIXING TANK



Max Capacity	309 bbls
Dimension	9'-3" W X 39'-4" L X 7'-0" H
Mixing Tank Cap.	235 bbls.
Slug Tank Cap	74 bbls

33.3 SPARE TANK



Max Capacity	304 bbls
Dimension	9'-3" W X 32'-9" L X 7'-0" H
Mixing Tank Cap.	230 bbls.
Slug Tank Cap	74 bbls

This document is the confidential and proprietary property of VIDA BEM LLC. It may contain technical information, service descriptions, and commercial cost estimates pertaining to VIDA BEM LLC products and services that are confidential. No part of this document may be reproduced, transmitted, or used for other than the designated purposes without prior permission of VIDA BEM LLC.

33.4 WATER TANK #1



Max Capacity	426 bbls
Dimensions	9'-3" W X 39'-4" L X 7'-0" H

33.5 WATER TANK #2



Max Capacity	399 bbls
Dimensions	9'-3" W X 39'-4" L X 7'-0" H

This document is the confidential and proprietary property of VIDA BEM LLC. It may contain technical information, service descriptions, and commercial cost estimates pertaining to VIDA BEM LLC products and services that are confidential. No part of this document may be reproduced, transmitted, or used for other than the designated purposes without prior permission of VIDA BEM LLC.

33.6 WATER TANK #3



Max Capacity	426 bbls
Dimensions	9'-3" W X 39'-4" L X 7'-0" H

WATER PUMP #1

Electric Motor	
HP Rating	50 HP
Make/Type	Marathon E572
S/N	C0189782 02/20/04
Centrifugal	
Size	8" X 6" X 14"
Make/Type	MCM 250
S/N	15191



WATER PUMP #2

Electric Motor	
HP Rating	50 HP
Make/Type	Marathon E572
S/N	C0189782 02/20/04
Centrifugal	
Size	8" X 6" X 14"
Make/Type	MCM 250
S/N	15190



This document is the confidential and proprietary property of VIDA BEM LLC. It may contain technical information, service descriptions, and commercial cost estimates pertaining to VIDA BEM LLC products and services that are confidential. No part of this document may be reproduced, transmitted, or used for other than the designated purposes without prior permission of VIDA BEM LLC.

33.7 TRIP TANK



Max Capacity	63 bbls
Dimensions	7'-6" W X 6'-8" L X 7'-0" H

TRIP TANK PUMP #1

Electric Motor	
HP Rating	20 HP
Make/Type	Marathon E572
S/N	C0185417 02/12/08
Centrifugal	
Size	3" X 2" X 13"
Make/Type	Double Life 118
S/N	14714



TRIP TANK PUMP #2

Electric Motor	
HP Rating	20 HP
Make/Type	Marathon E572
S/N	C0186823
Centrifugal	
Size	3" X 2" X 13"
Make/Type	Double Life 118
S/N	14713

This document is the confidential and proprietary property of VIDA BEM LLC. It may contain technical information, service descriptions, and commercial cost estimates pertaining to VIDA BEM LLC products and services that are confidential. No part of this document may be reproduced, transmitted, or used for other than the designated purposes without prior permission of VIDA BEM LLC.

34.0 MUD HANDLING

SHALE SHAKER 3 EACH



MAKE / MODEL

DERRICK 58 FLO-LINE CLEANER PLUS

S/N	1555
S/N	1710
S/N	1967

Dimensions	73" W X 127" L X 84" H
Screen Angle	-15 to 5 Degrees
Rotating Speed of Exciting Vibrator	1800 RPM
Power	2 X 2.5 HP Electric Motors
Handling Capacity	900 GPM
Weight	2724 kg
Size Solids Removal	>40 Microns

This document is the confidential and proprietary property of VIDA BEM LLC. It may contain technical information, service descriptions, and commercial cost estimates pertaining to VIDA BEM LLC products and services that are confidential. No part of this document may be reproduced, transmitted, or used for other than the designated purposes without prior permission of VIDA BEM LLC.

34.1 SHALE SHAKER POWER 1



VIBRATOR MOTOR SHAKER #1.A	
HP Rating	2.5 HP
Make/Type	DERRICK SG2X- 460/480-60 VIBRATOR
S/N	E1039
RPM	1800

VIBRATOR MOTOR SHAKER #1.B	
HP Rating	2.5 HP
Make/Type	DERRICK SG2X- 460/480-60 VIBRATOR
S/N	E1004
RPM	1800

VIDA BEM

This document is the confidential and proprietary property of VIDA BEM LLC. It may contain technical information, service descriptions, and commercial cost estimates pertaining to VIDA BEM LLC products and services that are confidential. No part of this document may be reproduced, transmitted, or used for other than the designated purposes without prior permission of VIDA BEM LLC.

34.2 SHALE SHAKER POWER 2



VIBRATOR MOTOR SHAKER #2.A	
HP Rating	2.5 HP
Make/Type	DERRICK SG2X- 460/480-60 VIBRATOR
S/N	E1049
RPM	1800

VIBRATOR MOTOR SHAKER #2.B	
HP Rating	2.5 HP
Make/Type	DERRICK SG2X- 460/480-60 VIBRATOR
S/N	E1048
RPM	1800

VIDA BEM

This document is the confidential and proprietary property of VIDA BEM LLC. It may contain technical information, service descriptions, and commercial cost estimates pertaining to VIDA BEM LLC products and services that are confidential. No part of this document may be reproduced, transmitted, or used for other than the designated purposes without prior permission of VIDA BEM LLC.

34.3 SHALE SHAKER POWER 3



VIBRATOR MOTOR SHAKER #3.A	
HP Rating	2.5 HP
Make/Type	DERRICK SG2X- 460/480-60 VIBRATOR
S/N	E1081
RPM	1800

VIBRATOR MOTOR SHAKER #3.B	
HP Rating	2.5 HP
Make/Type	DERRICK SG2X- 460/480-60 VIBRATOR
S/N	E1083
RPM	1800

VIDA BEM

This document is the confidential and proprietary property of VIDA BEM LLC. It may contain technical information, service descriptions, and commercial cost estimates pertaining to VIDA BEM LLC products and services that are confidential. No part of this document may be reproduced, transmitted, or used for other than the designated purposes without prior permission of VIDA BEM LLC.

35.0 DESANDER UNIT



MAKE / MODEL

DERRICK VERTICAL DESANDER 10" INLINE

Dimensions	74-1/4" W X 39" L X 89-7/8" H
Size Solids Removal	40-100 Microns
Cone	3 Each
Handling Capacity	500 GPM Per Cone at 75 ft of head
Weight	680 kg

DESANDER CENTRIFUGAL PUMP

Electric Motor	
HP Rating	75 HP
Make/Type	Marathon E576A
S/N	C0186429
Centrifugal	
Size	8" X 6" X 14"
Make/Type	Double Life 250
S/N	14694



This document is the confidential and proprietary property of VIDA BEM LLC. It may contain technical information, service descriptions, and commercial cost estimates pertaining to VIDA BEM LLC products and services that are confidential. No part of this document may be reproduced, transmitted, or used for other than the designated purposes without prior permission of VIDA BEM LLC.

35.1 DESANDER UNIT



MAKE / MODEL

BRANDT DESILTER SE-20 4" HYDROCYCLONES

Dimensions	32" W X 104-1/2" L X 51" H
Feed Pipe	8"
Overflow Pipe	8"
Trough Angle	15 Degrees
Size Solids Removal	20-74 Microns
Cone	20 Each
Handling Capacity	60 GPM Per Cone at 75 ft of head
Weight	

DESILTER CENTRIFUGAL PUMP

Electric Motor	
HP Rating	75 HP
Make/Type	Marathon E576A
S/N	C0192437
Centrifugal	
Size	8" X 6" X 14"
Make/Type	Double Life 250
S/N	14695



This document is the confidential and proprietary property of VIDA BEM LLC. It may contain technical information, service descriptions, and commercial cost estimates pertaining to VIDA BEM LLC products and services that are confidential. No part of this document may be reproduced, transmitted, or used for other than the designated purposes without prior permission of VIDA BEM LLC.

36.0 VACUUM D-GASSER



MAKE / MODEL

SWACO HORIZONTAL D-GASSER

Dimensions	42" W X 157" L X 87" H
Pipe In	8"
Pipe Discharge	6"
Weight	1520 kg
Handling Capacity	1000 gpm

VACUUM PUMP



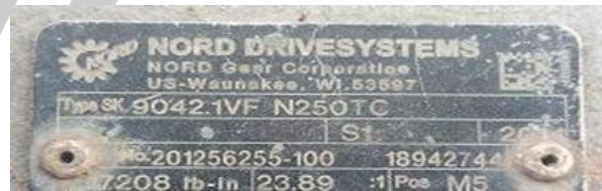
Electric Motor	
HP Rating	3 HP
Make/Type	TOSHIBA B0034YKI 2A02R
S/N	980520884
RPM	1730
AIR COMPRESSOR	
Make/Type	INGERSOLL-RAND TYPE30
S/N	

This document is the confidential and proprietary property of VIDA BEM LLC. It may contain technical information, service descriptions, and commercial cost estimates pertaining to VIDA BEM LLC products and services that are confidential. No part of this document may be reproduced, transmitted, or used for other than the designated purposes without prior permission of VIDA BEM LLC.

37.0 MUD AGITATORS

9 Each Make/Model Double Life

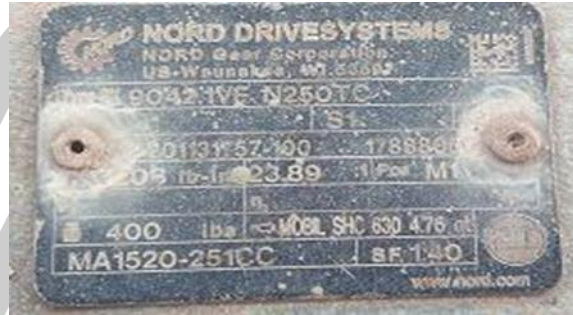
MUD AGITATOR # 1	
Electric Motor	
HP Rating	15 HP (3Phase)
Make/Type	BALDOR T3C Hazardous
S/N	Z1403280120
RPM	1760
Gearbox	
Make/Type	NORD Drive Systems
S/N	18924744
POS	M5
Gear Ratio	23.89:1
Oil type	Mobile SHC630
Torque Rating	208 lb-in
Output Speed	73 RPM



VIDA BEM

This document is the confidential and proprietary property of VIDA BEM LLC. It may contain technical information, service descriptions, and commercial cost estimates pertaining to VIDA BEM LLC products and services that are confidential. No part of this document may be reproduced, transmitted, or used for other than the designated purposes without prior permission of VIDA BEM LLC.

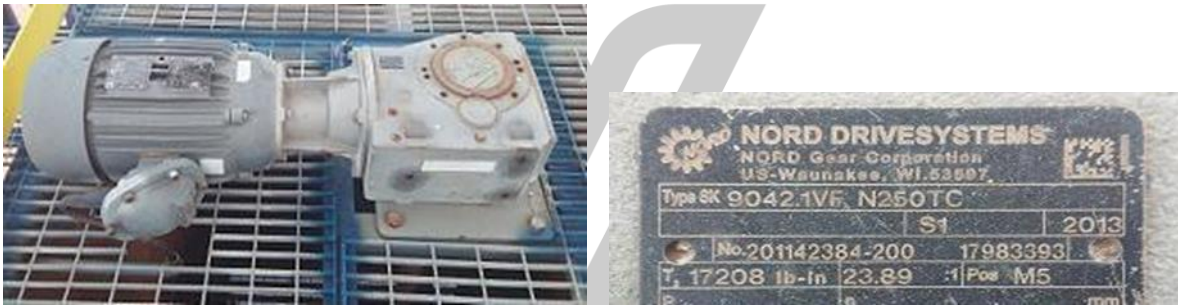
MUD AGITATOR # 2	
Electric Motor	
HP Rating	15 HP (3Phase)
Make/Type	BALDOR T3C Hazardous
S/N	Z1403280130
RPM	1760
Gearbox	
Make/Type	NORD Drive Systems SK9042.1VF N250TC
S/N	1788850
POS	M5
Gear Ratio	23.89:1
Oil type	Mobile SHC630
Torque Rating	208 lb-in
Output Speed	73 RPM



VIDA BEM

This document is the confidential and proprietary property of VIDA BEM LLC. It may contain technical information, service descriptions, and commercial cost estimates pertaining to VIDA BEM LLC products and services that are confidential. No part of this document may be reproduced, transmitted, or used for other than the designated purposes without prior permission of VIDA BEM LLC.

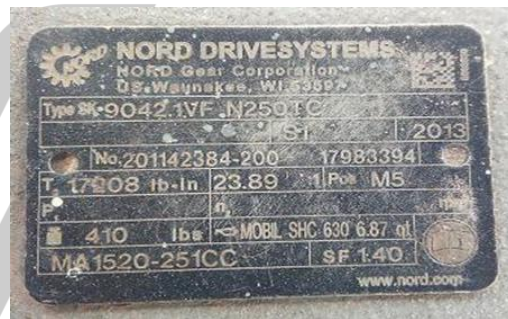
MUD AGITATOR # 3	
Electric Motor	
HP Rating	15 HP (3Phase)
Make/Type	BALDOR T3C Hazardous
S/N	Z1403280135
RPM	1760
Gearbox	
Make/Type	NORD Drive Systems SK9042.1VF N250TC
S/N	17983393
POS	M5
Gear Ratio	23.89:1
Oil type	Mobile SHC630
Torque Rating	208 lb-in
Output Speed	73 RPM



VIDA BEM

This document is the confidential and proprietary property of VIDA BEM LLC. It may contain technical information, service descriptions, and commercial cost estimates pertaining to VIDA BEM LLC products and services that are confidential. No part of this document may be reproduced, transmitted, or used for other than the designated purposes without prior permission of VIDA BEM LLC.

MUD AGITATOR # 4	
Electric Motor	
HP Rating	15 HP (3Phase)
Make/Type	BALDOR T3C Hazardous
S/N	Z10611976
RPM	1760
Gearbox	
Make/Type	NORD Drive Systems SK9042.1VF N250TC
S/N	17983394
POS	M5
Gear Ratio	23.89:1
Oil type	Mobile SHC630
Torque Rating	208 lb-in
Output Speed	73 RPM



VIDA BEM

This document is the confidential and proprietary property of VIDA BEM LLC. It may contain technical information, service descriptions, and commercial cost estimates pertaining to VIDA BEM LLC products and services that are confidential. No part of this document may be reproduced, transmitted, or used for other than the designated purposes without prior permission of VIDA BEM LLC.

MUD AGITATOR # 5	
Electric Motor	
HP Rating	15 HP (3Phase)
Make/Type	BALDOR T3C Hazardous
S/N	Z1403280100
RPM	1760
Gearbox	
Make/Type	NORD Drive Systems SK9042.1VF N250TC
S/N	18950434
POS	M5
Gear Ratio	23.89:1
Oil type	Mobile SHC630
Torque Rating	208 lb-in
Output Speed	73 RPM



VIDA BEM

This document is the confidential and proprietary property of VIDA BEM LLC. It may contain technical information, service descriptions, and commercial cost estimates pertaining to VIDA BEM LLC products and services that are confidential. No part of this document may be reproduced, transmitted, or used for other than the designated purposes without prior permission of VIDA BEM LLC.

MUD AGITATOR # 6	
Electric Motor	
HP Rating	15 HP (3Phase)
Make/Type	BALDOR T3C Hazardous
S/N	Z10611986
RPM	1760
Gearbox	
Make/Type	NORD Drive Systems SK9042.1VF N250TC
S/N	17557365
POS	M5
Gear Ratio	23.89:1
Oil type	Mobile SHC630
Torque Rating	208 lb-in
Output Speed	73 RPM



This document is the confidential and proprietary property of VIDA BEM LLC. It may contain technical information, service descriptions, and commercial cost estimates pertaining to VIDA BEM LLC products and services that are confidential. No part of this document may be reproduced, transmitted, or used for other than the designated purposes without prior permission of VIDA BEM LLC.

MUD AGITATOR # 7	
Electric Motor	
HP Rating	15 HP (3Phase)
Make/Type	BALDOR T3C Hazardous
S/N	Z10611981
RPM	1760
Gearbox	
Make/Type	NORD Drive Systems SK9042.1VF N250TC
S/N	18942745
POS	M5
Gear Ratio	23.89:1
Oil type	Mobile SHC630
Torque Rating	208 lb-in
Output Speed	73 RPM



VIDA BEM

This document is the confidential and proprietary property of VIDA BEM LLC. It may contain technical information, service descriptions, and commercial cost estimates pertaining to VIDA BEM LLC products and services that are confidential. No part of this document may be reproduced, transmitted, or used for other than the designated purposes without prior permission of VIDA BEM LLC.

MUD AGITATOR # 8	
Electric Motor	
HP Rating	15 HP (3Phase)
Make/Type	BALDOR T3C Hazardous
S/N	Z1403280140
RPM	1760
Gearbox	
Make/Type	NORD Drive Systems SK9042.1VF N250TC
S/N	1895043
POS	M5
Gear Ratio	23.89:1
Oil type	Mobile SHC630
Torque Rating	208 lb-in
Output Speed	73 RPM



This document is the confidential and proprietary property of VIDA BEM LLC. It may contain technical information, service descriptions, and commercial cost estimates pertaining to VIDA BEM LLC products and services that are confidential. No part of this document may be reproduced, transmitted, or used for other than the designated purposes without prior permission of VIDA BEM LLC.

MUD AGITATOR # 9	
Electric Motor	
HP Rating	15 HP (3Phase)
Make/Type	BALDOR T3C Hazardous
S/N	Z1403280110
RPM	1760
Gearbox	
Make/Type	NORD Drive Systems SK9042.1VF N250TC
S/N	17983374
POS	M5
Gear Ratio	23.89:1
Oil type	Mobile SHC630
Torque Rating	208 lb-in
Output Speed	73 RPM



VIDA BEM

This document is the confidential and proprietary property of VIDA BEM LLC. It may contain technical information, service descriptions, and commercial cost estimates pertaining to VIDA BEM LLC products and services that are confidential. No part of this document may be reproduced, transmitted, or used for other than the designated purposes without prior permission of VIDA BEM LLC.

38.0 MUD HOPPER



MAKE / MODEL

HOPPER VENTURY 6"

Dimension	X45" L X40"
Pipe In	6"
Pipe Discharge	6"
Handling Capacity	1000 GPM

MUD HOPPER PUMP #1

Electric Motor	
HP Rating	75 HP
Make/Type	Marathon E576A
S/N	C0192437
Centrifugal	
Size	8" X 6" X 14"
Make/Type	Double Life 250
S/N	14695



MUD HOPPER PUMP #2

Electric Motor	
HP Rating	75 HP
Make/Type	Marathon E576A
S/N	C0192437
Centrifugal	
Size	8" X 6" X 14"
Make/Type	Double Life 250
S/N	14695



This document is the confidential and proprietary property of VIDA BEM LLC. It may contain technical information, service descriptions, and commercial cost estimates pertaining to VIDA BEM LLC products and services that are confidential. No part of this document may be reproduced, transmitted, or used for other than the designated purposes without prior permission of VIDA BEM LLC.

39.0 COMPRESSOR ROOM



MAKE / MODEL

SULLAIR WS5500

AIR COMPRESSOR #1	
Make & Type	SULLAIR WS5508 AC
Serial Number	37214040729
Air Press	115/125 PSI

AIR COMPRESSOR #2	
Make & Type	SULLAIR WS5508 AC
Serial Number	37214040730
Air Press	115/125 PSI

AIR TANK (3 UNIT)	
Capacity	285.3 Gal
Working Pressure	145 PSI
Design Temp	250 C
Weight	525 kg (1 Unit)

This document is the confidential and proprietary property of VIDA BEM LLC. It may contain technical information, service descriptions, and commercial cost estimates pertaining to VIDA BEM LLC products and services that are confidential. No part of this document may be reproduced, transmitted, or used for other than the designated purposes without prior permission of VIDA BEM LLC.

VACUUM PUMP	
Disel Engine	
HP Rating	14 HP
Make & Type	YANMAR TF160-EIS
Serial Number	D42843
Max RPM	1600 RPM



VIDA BEM

This document is the confidential and proprietary property of VIDA BEM LLC. It may contain technical information, service descriptions, and commercial cost estimates pertaining to VIDA BEM LLC products and services that are confidential. No part of this document may be reproduced, transmitted, or used for other than the designated purposes without prior permission of VIDA BEM LLC.

40.0 INSTRUMENTATION

DRILLER'S CONSOLE DISPLAY

Make &Type :

- a. Weight Indicator
- b. Rotary RPM meter
- c. Rotary Torque meter
- d. Pump pressure Indicator
- e. Pump Stroke Counter
- f. Pump Stroke totalizer
- g. Pit Level Indicator
- h. Tong Torque Indicator
- i. Compressed air Pressure
- j. Electrical Power system
- k. Trip Tank Volume
- l. Alarm System
- m. Emergency shutdown
- n. Remote Control BOP
- o. HDI drilling console gauge display

This document is the confidential and proprietary property of VIDA BEM LLC. It may contain technical information, service descriptions, and commercial cost estimates pertaining to VIDA BEM LLC products and services that are confidential. No part of this document may be reproduced, transmitted, or used for other than the designated purposes without prior permission of VIDA BEM LLC.

REFERENCES

Description	Manual Book	Part List	Status	Remarks
CROWN BLOCK	-	Drawing LEE C. MOORE. TEIKOKU OIL CO.LTD JAPAN. 7-60" Sheave CROWN BLOCK	√	
MAST	-	Drawing LEE C. MOORE. TEIKOKU OIL CO.LTD JAPAN. 147' PLUS 25' HIGH FLOOR BEAM LEG MAST	√	
SUBSTRUCTURE	-	Drawing LEE C. MOORE. TEIKOKU OIL CO.LTD JAPAN. 72'-7-1/8" LG X 31'-10" WIDE X 4'-6" HIGH	√	
DRAWWORKS	1. GENERAL SERVICE MANUAL NATIONAL DRAWWORKS 2. UNIVERSAL DISCBRAKE MANUAL EPL-1124 (NOV) 3. BAYLOR ELMAGCO BRAKE MANUAL	1. 1320 UE DRAWWORKS PARTS LIST EPL 462- 1 2. NATIONAL DISC BRAKE 1320 UDBE PARTS LIST 3. BAYLOR ELMAGCO 7040 PARTS LIST	√	
HOISTING EQUIPMENT	1. EMSCO RA-52-6-500 TB BLOCK C & O 2. INGERSOLL-RAND K4U-K4UL-K5U- K5UL-K6UL MANUAL 3. RAM CATALINA AML336AK MANUAL	1. EMSCORA-52-6 PARTS LIST 2. NATIONAL OILWELL HA131T PARTS LIST	√	

This document is the confidential and proprietary property of VIDA BEM LLC. It may contain technical information, service descriptions, and commercial cost estimates pertaining to VIDA BEM LLC products and services that are confidential. No part of this document may be reproduced, transmitted, or used for other than the designated purposes without prior permission of VIDA BEM LLC.

ROTARY EQUIPMENT	1. NATIONAL OILWELL TYPE P SWIVELS MANUAL	1. NATIONAL D-375 PARTS LIST EPL- 927 2. NATIONAL P-500 PARTS LIST EPL 894	√	
------------------	---	---	---	--

WELL CONTROL	1. MANUAL TYPE 80 KOOMEY 2. MUD GAS SEPARATOR GN USER MANUAL	1. KOOMEY TYPE 80 PARTS INDEX 2. PARTS LIST NL SHAFFER	√	
Description	Manual Book	Part List	Status	Remarks
GENSETS	1. SERVICE MANUAL D379, D398, & D399 2. INSTRUCTION MANUAL KATO AC GENERATOR	1. Caterpillar Critical Parts 2. PARTS LIST KATO AC GENERATOR	√	
POWER DISTRIBUTION	1. ROSS HILL MANUAL 2. AZZ RIG-A-LITE MANUAL	1. DRAWING ROSS HILL JOB #11-1017 AMERIMEX POWER SYSTEM	√	
MUD PUMP	1. OILWELL A1700PT C&O 2. WEATHERFORD MP-16 MANUAL	1. OILWELL A1700PT PARTS LIST	√	

This document is the confidential and proprietary property of VIDA BEM LLC. It may contain technical information, service descriptions, and commercial cost estimates pertaining to VIDA BEM LLC products and services that are confidential. No part of this document may be reproduced, transmitted, or used for other than the designated purposes without prior permission of VIDA BEM LLC.

SOLID CONTROL	1. SHAKER MANUAL 2. DESANDER MANUAL 3. MANUAL SUPER G2 4. VACUUM D-GASSER MANUAL 5. AGITATOR DOUBLE LIFE MANUAL 6. CENTRIGUGAL MANUAL MCM & DOUBLE LIFE	-	✓	
AC & DC MOTOR	1. HIGH TORQ GE752 MANUAL 2. MARATHON ELECTRICMANUA L 3. BALDOR ELECTRIC MANUAL	1.752ARB2 PARTS MANUAL	✓	



This document is the confidential and proprietary property of VIDA BEM LLC. It may contain technical information, service descriptions, and commercial cost estimates pertaining to VIDA BEM LLC products and services that are confidential. No part of this document may be reproduced, transmitted, or used for other than the designated purposes without prior permission of VIDA BEM LLC.



1-800-957-2391

TO SCHEDULE AN INSPECTION PLEASE CONTACT

Jose Lozano

Founder

VIDA BEM LLC

Office: 800 957 2391

Cell: 661 303 3190 (What's APP)

Email: jlozano@vidabem.us

Visit Us: www.vidaeq.com



Subject to prior sale and or other disposition.

Purchasing Party is responsible for verifying accuracy of information provided. All Items to be quoted in US currency. All prices and availability are subject to change without notice and are subject to applicable sales tax. Title to all goods listed remain with the seller until the purchase price is fully paid. Equipment is purchased as is, where is, without warranty unless otherwise specified. Use hours are estimate hours as of the date of this posting and are not guaranteed. Equipment pictured may contain attachments and/or accessories not priced in this offer. **Sale subject to terms and conditions on final bill of sale.**

This document is the confidential and proprietary property of VIDA BEM LLC. It may contain technical information, service descriptions, and commercial cost estimates pertaining to VIDA BEM LLC products and services that are confidential. No part of this document may be reproduced, transmitted, or used for other than the designated purposes without prior permission of VIDA BEM LLC.