



**Rig 2**

**2018 Oil Works Inc. 1500 HP DC ELECTRIC RIG**

**YOM: 2018**

This document is the confidential and proprietary property of VIDA BEM LLC. It may contain technical information, service descriptions, and commercial cost estimates pertaining to VIDA BEM products and services that are confidential. No part of this document may be reproduced, transmitted, or used for other than the designated purposes without prior permission of VIDA BEM LLC.



## Disclaimer / Confidentiality Statement

This document is strictly private and confidential, and is being submitted for the sole purpose of responding to an expression of interest (February, 2025) related to the sale of rig equipment being offered by VIDA BEM, LLC. This document contains information that is proprietary and confidential ("Confidential Information") and is being provided for the sole purpose of evaluating this equipment package. Confidential Information includes information relating to the goods, equipment, and/ or services referred to in the proposal, but is not limited to, specifications, designs, drawings, product data, manufacturing processes, installation methods, price lists, technical information, visually transmitted information, trade secrets, software, firmware, and other confidential or proprietary information forming part of this document.

By continuing past this notice to review you agree to keep this information confidential and agree to limit disclosure of the information to only those authorized employees and representatives who need to know the information in order to evaluate this equipment package.

In addition, you agree not to; (i) disclose the information contained in this document to any third parties; (ii) use the information for any purpose other than to evaluate the rig equipment acquisition; (iii) use the information in any other way that might be prejudicial or detrimental to VIDA BEM, LLC and (iv) copy, distribute or reproduce the contents of the proposal information in whole or part.

In the event this equipment package is not considered any further and / or your client is not considered for the award letter, you agree to destroy this document in digital and hard copy forms, and all complete or partial replications or excerpts taken from it, or to return the same to VIDA BEM, LLC.

The rig owner owns its patents, copyrights, commercial secrets, technology, knowledge, information of any nature ("Intellectual Property"), revealed in connection with the subject matter of this proposal and nothing contained in the same shall be considered as an authorization or transference or license or property rights or rights of any nature of a party towards the other in any matter related with Intellectual Property.

All operating and controls systems mentioned in this document are used for identification purposes only and may be trademarks of their respective owners.

This equipment package is subject to a mutually agreed definitive agreement between our companies, and while the intent is to eventually negotiate and execute the same at a later date, it is expressly understood that this is an equipment description document only and no liability or obligation of any nature whatsoever is intended to be created hereunder.

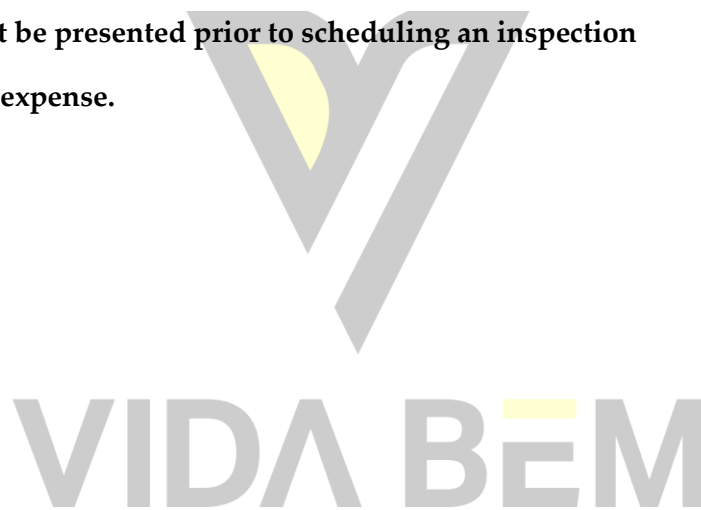
This document is the confidential and proprietary property of VIDA BEM LLC. It may contain technical information, service descriptions, and commercial cost estimates pertaining to VIDA BEM products and services that are confidential. No part of this document may be reproduced, transmitted, or used for other than the designated purposes without prior permission of VIDA BEM LLC.

This document is the confidential and proprietary property of VIDA BEM LLC. It may contain technical information, service descriptions, and commercial cost estimates pertaining to VIDA BEM products and services that are confidential. No part of this document may be reproduced, transmitted, or used for other than the designated purposes without prior permission of VIDA BEM LLC.



**HISTORY****YEAR OF CONSTRUCTION:** 2018**LAST WELL DRILLED:** 7/2025**NOTE: Approximately 6-7 years remaining to CAT IV.**

There are no major repairs required to the rig. Minor repairs of course but on a case by case basis to be expected when disassembly and reassembly occurs. Minor repairs should be considered as installation cost.

**Proof of Funds must be presented prior to scheduling an inspection****Inspection at buyer expense.**

Subject to prior sale and or other disposition.

Purchasing Party is responsible for verifying accuracy of information provided. All Items to be quoted in US currency. All prices and availability are subject to change without notice and are subject to applicable sales tax. Title to all goods listed remain with the seller until the purchase price is fully paid. Equipment is purchased as is, where is, without warranty unless otherwise specified. Use hours are estimate hours as of the date of this posting and are not guaranteed. Equipment pictured may contain attachments and/or accessories not priced in this offer. Sale subject to terms and conditions on final bill of sale.

This document is the confidential and proprietary property of VIDA BEM LLC. It may contain technical information, service descriptions, and commercial cost estimates pertaining to VIDA BEM products and services that are confidential. No part of this document may be reproduced, transmitted, or used for other than the designated purposes without prior permission of VIDA BEM LLC.



## 2018 RIG 2 1,500 HP DC ELECTRIC RIG

### DRAWWORKS

National P-110UE

Input Power: 1,500 hp

Main Brake: 1,500 hp Baylor Break 6032 (Dynomatic) Aux

Parking Brakes: OWI band brake system

### SUBSTRUCTURE

OWI Box on Box Floor Height: 28'

Clear Height (beneath rotary beams): 23' Rotary Capacity: 1,000,000 lbs.

Max Pipe Setback: 750,000 lbs.

### WALKING SYSTEM

OWI Stealth Stompers

### ROTARY TABLE

Gardner Denver 27.5

### HYDRAULIC CATWALK

Forum Pipe Wrangler

### MAST

142' OWI

Drill Line: 1-3/8"

Racking Capacity: 22,000' of 5 1/2" DP

### TOP DRIVE

**CanRig 1250 AC 500 Ton Max Speed:** 225 rpm Continuous Drill Torque: 65,300 ft-lbs. Max Torque (Make/Break): 95,000/ 128,800 ft-lbs. (2) 400 hp AC induction motor & drive system w/ PLC Integral 525 ton big shorty 5x42 block assembly

This document is the confidential and proprietary property of VIDA BEM LLC. It may contain technical information, service descriptions, and commercial cost estimates pertaining to VIDA BEM products and services that are confidential. No part of this document may be reproduced, transmitted, or used for other than the designated purposes without prior permission of VIDA BEM LLC.



## **BLOCK**

IDECO, 500 Ton

## **POWER SYSTEM**

(3) 3512 Caterpillar

Max hp 1500

Max Torque 4580

Max RPM 1200

1365 KW x 3

## **SCR HOUSE**

OMRON 3X4 with Auto Start, Auto Sync, and 3 Pump Capacity

## **MUD PUMP #1**

Gardner Denver PZ-11 Stroke: 11"

Input Power: (1) 1,600

Pressure Rating: 7,500 psi (51.7 MPa)

## **MUD PUMP #2**

Gardner Denver PZ-11 Stroke: 11"

Input Power: (1) 1,600

Pressure Rating: 7,500 psi (51.7 MPa)

## **MUD PUMP #3**

Gardner Denver PZ-11 Stroke: 11"

Input Power: (1) 1,600

Pressure Rating: 7,500 psi (51.7 MPa)

This document is the confidential and proprietary property of VIDA BEM LLC. It may contain technical information, service descriptions, and commercial cost estimates pertaining to VIDA BEM products and services that are confidential. No part of this document may be reproduced, transmitted, or used for other than the designated purposes without prior permission of VIDA BEM LLC.



## **MUD TANKS**

Three Tanks w/ 1,500 bbls total capacity Shakers: (2x) Derrick Shale Shakers FLC 503

**PREMIX TANK:** 580 BBLS

**TRIP TANK:** 80 bbls

**MUD GAS SEPARATOR:** (x1) Mi Swaco 48" (122cm) OD x 120" (305cm) tall

## **BOP**

13 5/8 Shaffer Annular 5000psi

13 5/8 Cameron Type-U Double Ram 10000psi

13 5/8 Cameron Type -U Single 10000psi

## **ACCUMULATOR**

Scarborough 400 Gallons 7stations, (x4) pneumatic pumps and (x1) electric triplex pump

## **CHOKE MANIFOLD**

Total Oilfield 4 1/16 HCR with 4 1/16 x 2 1/16 wings 10000 Manual Chokes

## **MISCELLANEOUSE:**

**Water Tank:** 1,000 bbls

**Fuel Tank:** 12,000 Gals

**Screw Compressor** - None at this time

## **TOOL / STORAGE / CAMP**

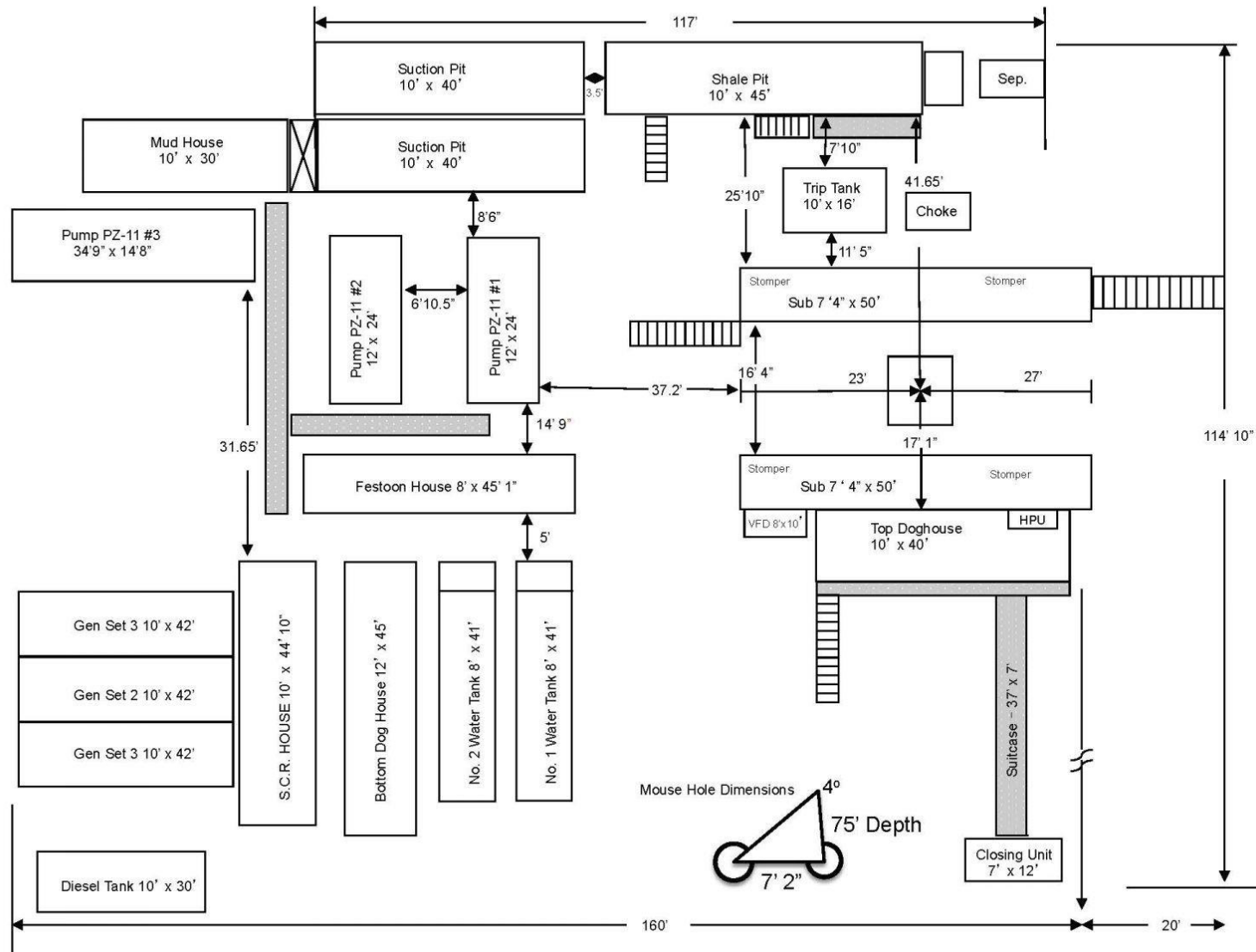
Parts Storage Room and Tool House Room Rig Manager Trailer: One 14' x 62' Mobil Home

**PIPE** (Not Included)

This document is the confidential and proprietary property of VIDA BEM LLC. It may contain technical information, service descriptions, and commercial cost estimates pertaining to VIDA BEM products and services that are confidential. No part of this document may be reproduced, transmitted, or used for other than the designated purposes without prior permission of VIDA BEM LLC.



# Rig No. 2



This document is the confidential and proprietary property of VIDA BEM LLC. It may contain technical information, service descriptions, and commercial cost estimates pertaining to VIDA BEM products and services that are confidential. No part of this document may be reproduced, transmitted, or used for other than the designated purposes without prior permission of VIDA BEM LLC.



## RIG INVENTORY DETAILS

Rig 2 Inventory						
Mo.	Da.	Yr.	Rig Classifications	Size Crews		
04	05	2019	OWI Diesel Electric Walking	4 or 5 men (including driller)		
Depth Rating		22,000 Feet		Rating Elevation		
DP Capacity		22,000 5 1/2 DP		3600 Feet		
Major Components		Drawworks	Rotary	Pump # 1	Pump # 2	Pump # 3
Make		National	Gardner Denver	Gardner Denver	Gardner Denver	Gardner Denver
Type		P-110-UE	27.5	PZ 11	PZ 11	PZ 11
Manufacturer's Max. Input HP Rating		1500		7500 PSI Fluid Ends 1600	7500 PSI Fluid Ends 1600	7500 PSI Fluid Ends 1600
Independent Power Number				1	1	1
Make				GE	GE	GE
Type				752 Series	752 Series	752 Series
Total Max. HP (hoisting for Dwks.) (continuous for other)				1000	1000	1000
Derrick: OWI Height: 142 Gross Nominal Capacity: 1,000,000 SHL 12 Lines						
Substructure: OWI Height 30' KB 28' BOP Clearance 22'						
Traveling Block Description						
Size wire line: 1 3/8in No. of Sheaves: 10 Make: National Type: Ideal Capacity: 500 tons						
Minimum Capacity Traveling Component (Top Drive, Hook, Block, Swivel)						
Top Drive: Make: Canrig Type: 1250AC 500Ton						
Block Make: IDECO Type: Big Shorty Capacity: 500 tons						
Blowout Prevention Description (13 5/8 10000 also available upon request)						
Number	Size, inches	Make	Type	Wrkg Pressure, psi	BOP Accumulator	
1	13 5/8	Shaffer	Annular	5000	Make: Koomey	
1	13 5/8	Shaffer	LWS	5000	Type: Custom 6 valve	
KILL AND CHOKE MANIFOLD				Total Usable Vol. 210 gal		
4 1/16"HCR WITH 4 1/16" X 2 1/16" WINGS				Precharge Press Rating 1500 lbs		
Drill Pipe and Collars						
Contractor agrees to provide 100,000 # of overpull at all times.						
Drill Pipe Length (feet)	OD, inches	Wt./ft.	Grade	Tool Jt. Type		Ft. since Insp.
10000	5	19.5	G-105			
10000	5	19.5	S-135			
Additional Rental Pipe Available						
Drill Collar Length (feet)	OD, inches	ID, inches	Wt./ft.	Joint Description		Footage Since Inspection
Additional Rental Collars Available						
Steel Pits						
3 Pits	Total volume of Active Mud Tanks 1500 Bbl		Premix Pit 580bbbls TripTank 80bbbls			
2 X Derrick Shale Shakers FLC503						

This document is the confidential and proprietary property of VIDA BEM LLC. It may contain technical information, service descriptions, and commercial cost estimates pertaining to VIDA BEM products and services that are confidential. No part of this document may be reproduced, transmitted, or used for other than the designated purposes without prior permission of VIDA BEM LLC.



**RIG PICTURES**

# VIDA BEM

This document is the confidential and proprietary property of VIDA BEM LLC. It may contain technical information, service descriptions, and commercial cost estimates pertaining to VIDA BEM products and services that are confidential. No part of this document may be reproduced, transmitted, or used for other than the designated purposes without prior permission of VIDA BEM LLC.





# VIDA BEM

This document is the confidential and proprietary property of VIDA BEM LLC. It may contain technical information, service descriptions, and commercial cost estimates pertaining to VIDA BEM products and services that are confidential. No part of this document may be reproduced, transmitted, or used for other than the designated purposes without prior permission of VIDA BEM LLC.





# VIDA BEM

This document is the confidential and proprietary property of VIDA BEM LLC. It may contain technical information, service descriptions, and commercial cost estimates pertaining to VIDA BEM products and services that are confidential. No part of this document may be reproduced, transmitted, or used for other than the designated purposes without prior permission of VIDA BEM LLC.





# VIDA BEM

This document is the confidential and proprietary property of VIDA BEM LLC. It may contain technical information, service descriptions, and commercial cost estimates pertaining to VIDA BEM products and services that are confidential. No part of this document may be reproduced, transmitted, or used for other than the designated purposes without prior permission of VIDA BEM LLC.





# VIDA BEM

This document is the confidential and proprietary property of VIDA BEM LLC. It may contain technical information, service descriptions, and commercial cost estimates pertaining to VIDA BEM products and services that are confidential. No part of this document may be reproduced, transmitted, or used for other than the designated purposes without prior permission of VIDA BEM LLC.





# VIDA BEM

This document is the confidential and proprietary property of VIDA BEM LLC. It may contain technical information, service descriptions, and commercial cost estimates pertaining to VIDA BEM products and services that are confidential. No part of this document may be reproduced, transmitted, or used for other than the designated purposes without prior permission of VIDA BEM LLC.





# VIDA BEM

This document is the confidential and proprietary property of VIDA BEM LLC. It may contain technical information, service descriptions, and commercial cost estimates pertaining to VIDA BEM products and services that are confidential. No part of this document may be reproduced, transmitted, or used for other than the designated purposes without prior permission of VIDA BEM LLC.





This document is the confidential and proprietary property of VIDA BEM LLC. It may contain technical information, service descriptions, and commercial cost estimates pertaining to VIDA BEM products and services that are confidential. No part of this document may be reproduced, transmitted, or used for other than the designated purposes without prior permission of VIDA BEM LLC.





**VIDA BEM**

This document is the confidential and proprietary property of VIDA BEM LLC. It may contain technical information, service descriptions, and commercial cost estimates pertaining to VIDA BEM products and services that are confidential. No part of this document may be reproduced, transmitted, or used for other than the designated purposes without prior permission of VIDA BEM LLC.





This document is the confidential and proprietary property of VIDA BEM LLC. It may contain technical information, service descriptions, and commercial cost estimates pertaining to VIDA BEM products and services that are confidential. No part of this document may be reproduced, transmitted, or used for other than the designated purposes without prior permission of VIDA BEM LLC.





This document is the confidential and proprietary property of VIDA BEM LLC. It may contain technical information, service descriptions, and commercial cost estimates pertaining to VIDA BEM products and services that are confidential. No part of this document may be reproduced, transmitted, or used for other than the designated purposes without prior permission of VIDA BEM LLC.





# VIDA BEM

This document is the confidential and proprietary property of VIDA BEM LLC. It may contain technical information, service descriptions, and commercial cost estimates pertaining to VIDA BEM products and services that are confidential. No part of this document may be reproduced, transmitted, or used for other than the designated purposes without prior permission of VIDA BEM LLC.





# VIDA BEM

This document is the confidential and proprietary property of VIDA BEM LLC. It may contain technical information, service descriptions, and commercial cost estimates pertaining to VIDA BEM products and services that are confidential. No part of this document may be reproduced, transmitted, or used for other than the designated purposes without prior permission of VIDA BEM LLC.





# VIDA BEM

This document is the confidential and proprietary property of VIDA BEM LLC. It may contain technical information, service descriptions, and commercial cost estimates pertaining to VIDA BEM products and services that are confidential. No part of this document may be reproduced, transmitted, or used for other than the designated purposes without prior permission of VIDA BEM LLC.





# VIDA BEM

This document is the confidential and proprietary property of VIDA BEM LLC. It may contain technical information, service descriptions, and commercial cost estimates pertaining to VIDA BEM products and services that are confidential. No part of this document may be reproduced, transmitted, or used for other than the designated purposes without prior permission of VIDA BEM LLC.





VIDA BEM

This document is the confidential and proprietary property of VIDA BEM LLC. It may contain technical information, service descriptions, and commercial cost estimates pertaining to VIDA BEM products and services that are confidential. No part of this document may be reproduced, transmitted, or used for other than the designated purposes without prior permission of VIDA BEM LLC.





# VIDA BEM

This document is the confidential and proprietary property of VIDA BEM LLC. It may contain technical information, service descriptions, and commercial cost estimates pertaining to VIDA BEM products and services that are confidential. No part of this document may be reproduced, transmitted, or used for other than the designated purposes without prior permission of VIDA BEM LLC.





# VIDA BEM

This document is the confidential and proprietary property of VIDA BEM LLC. It may contain technical information, service descriptions, and commercial cost estimates pertaining to VIDA BEM products and services that are confidential. No part of this document may be reproduced, transmitted, or used for other than the designated purposes without prior permission of VIDA BEM LLC.





# VIDA BEM

This document is the confidential and proprietary property of VIDA BEM LLC. It may contain technical information, service descriptions, and commercial cost estimates pertaining to VIDA BEM products and services that are confidential. No part of this document may be reproduced, transmitted, or used for other than the designated purposes without prior permission of VIDA BEM LLC.





# VIDA BEM

This document is the confidential and proprietary property of VIDA BEM LLC. It may contain technical information, service descriptions, and commercial cost estimates pertaining to VIDA BEM products and services that are confidential. No part of this document may be reproduced, transmitted, or used for other than the designated purposes without prior permission of VIDA BEM LLC.





This document is the confidential and proprietary property of VIDA BEM LLC. It may contain technical information, service descriptions, and commercial cost estimates pertaining to VIDA BEM products and services that are confidential. No part of this document may be reproduced, transmitted, or used for other than the designated purposes without prior permission of VIDA BEM LLC.





This document is the confidential and proprietary property of VIDA BEM LLC. It may contain technical information, service descriptions, and commercial cost estimates pertaining to VIDA BEM products and services that are confidential. No part of this document may be reproduced, transmitted, or used for other than the designated purposes without prior permission of VIDA BEM LLC.





This document is the confidential and proprietary property of VIDA BEM LLC. It may contain technical information, service descriptions, and commercial cost estimates pertaining to VIDA BEM products and services that are confidential. No part of this document may be reproduced, transmitted, or used for other than the designated purposes without prior permission of VIDA BEM LLC.





# VIDA BEM

This document is the confidential and proprietary property of VIDA BEM LLC. It may contain technical information, service descriptions, and commercial cost estimates pertaining to VIDA BEM products and services that are confidential. No part of this document may be reproduced, transmitted, or used for other than the designated purposes without prior permission of VIDA BEM LLC.





# VIDA BEM

This document is the confidential and proprietary property of VIDA BEM LLC. It may contain technical information, service descriptions, and commercial cost estimates pertaining to VIDA BEM products and services that are confidential. No part of this document may be reproduced, transmitted, or used for other than the designated purposes without prior permission of VIDA BEM LLC.





# VIDA BEM

This document is the confidential and proprietary property of VIDA BEM LLC. It may contain technical information, service descriptions, and commercial cost estimates pertaining to VIDA BEM products and services that are confidential. No part of this document may be reproduced, transmitted, or used for other than the designated purposes without prior permission of VIDA BEM LLC.





# VIDA BEM

This document is the confidential and proprietary property of VIDA BEM LLC. It may contain technical information, service descriptions, and commercial cost estimates pertaining to VIDA BEM products and services that are confidential. No part of this document may be reproduced, transmitted, or used for other than the designated purposes without prior permission of VIDA BEM LLC.





# VIDA BEM

This document is the confidential and proprietary property of VIDA BEM LLC. It may contain technical information, service descriptions, and commercial cost estimates pertaining to VIDA BEM products and services that are confidential. No part of this document may be reproduced, transmitted, or used for other than the designated purposes without prior permission of VIDA BEM LLC.





# VIDA BEM

This document is the confidential and proprietary property of VIDA BEM LLC. It may contain technical information, service descriptions, and commercial cost estimates pertaining to VIDA BEM products and services that are confidential. No part of this document may be reproduced, transmitted, or used for other than the designated purposes without prior permission of VIDA BEM LLC.





# VIDA BEM

This document is the confidential and proprietary property of VIDA BEM LLC. It may contain technical information, service descriptions, and commercial cost estimates pertaining to VIDA BEM products and services that are confidential. No part of this document may be reproduced, transmitted, or used for other than the designated purposes without prior permission of VIDA BEM LLC.





# VIDA BEM

This document is the confidential and proprietary property of VIDA BEM LLC. It may contain technical information, service descriptions, and commercial cost estimates pertaining to VIDA BEM products and services that are confidential. No part of this document may be reproduced, transmitted, or used for other than the designated purposes without prior permission of VIDA BEM LLC.

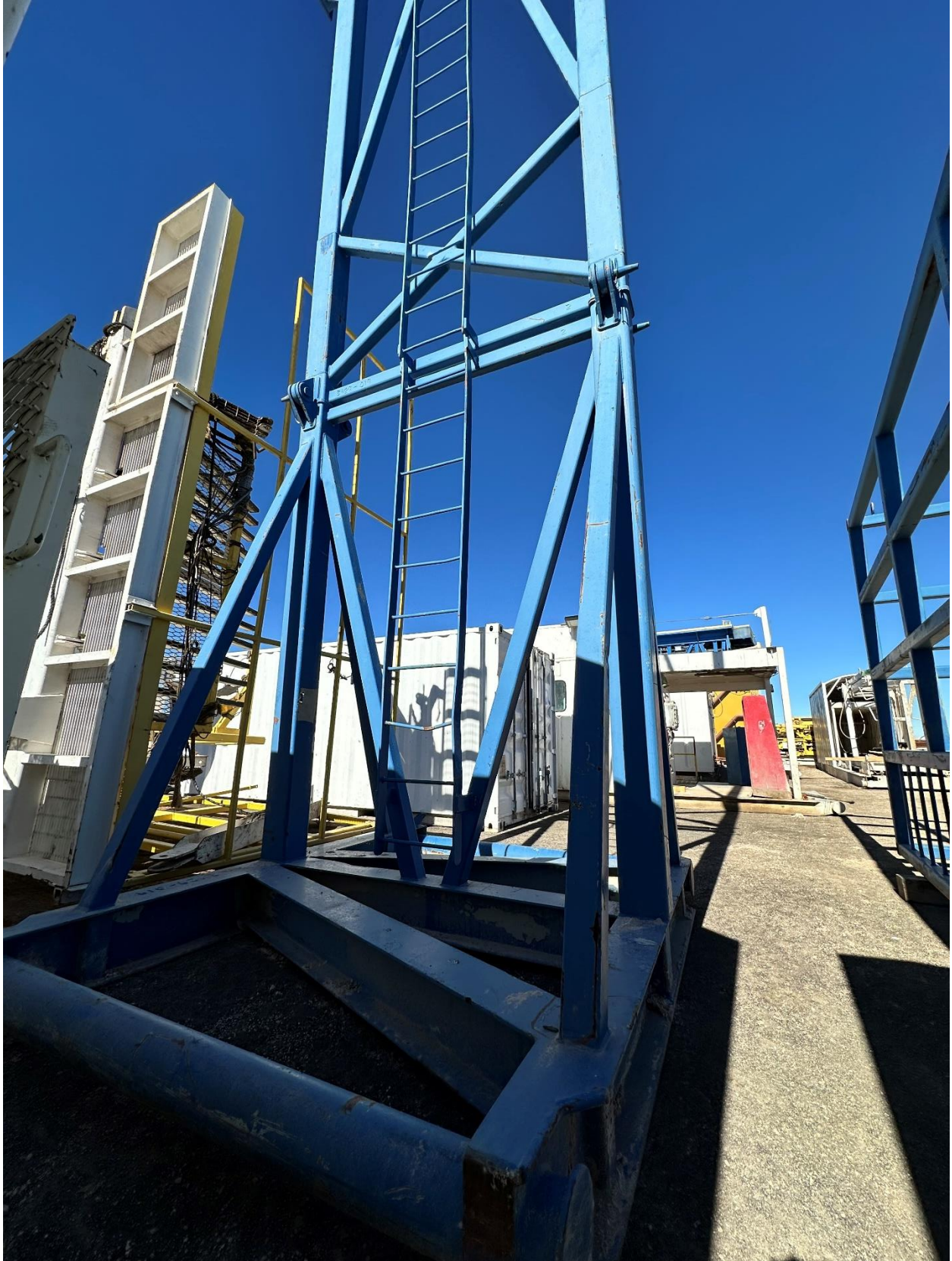




# VIDA BEM

This document is the confidential and proprietary property of VIDA BEM LLC. It may contain technical information, service descriptions, and commercial cost estimates pertaining to VIDA BEM products and services that are confidential. No part of this document may be reproduced, transmitted, or used for other than the designated purposes without prior permission of VIDA BEM LLC.





This document is the confidential and proprietary property of VIDA BEM LLC. It may contain technical information, service descriptions, and commercial cost estimates pertaining to VIDA BEM products and services that are confidential. No part of this document may be reproduced, transmitted, or used for other than the designated purposes without prior permission of VIDA BEM LLC.





# VIDA BEM

This document is the confidential and proprietary property of VIDA BEM LLC. It may contain technical information, service descriptions, and commercial cost estimates pertaining to VIDA BEM products and services that are confidential. No part of this document may be reproduced, transmitted, or used for other than the designated purposes without prior permission of VIDA BEM LLC.





This document is the confidential and proprietary property of VIDA BEM LLC. It may contain technical information, service descriptions, and commercial cost estimates pertaining to VIDA BEM products and services that are confidential. No part of this document may be reproduced, transmitted, or used for other than the designated purposes without prior permission of VIDA BEM LLC.





# VIDA BEM

This document is the confidential and proprietary property of VIDA BEM LLC. It may contain technical information, service descriptions, and commercial cost estimates pertaining to VIDA BEM products and services that are confidential. No part of this document may be reproduced, transmitted, or used for other than the designated purposes without prior permission of VIDA BEM LLC.





This document is the confidential and proprietary property of VIDA BEM LLC. It may contain technical information, service descriptions, and commercial cost estimates pertaining to VIDA BEM products and services that are confidential. No part of this document may be reproduced, transmitted, or used for other than the designated purposes without prior permission of VIDA BEM LLC.





VIDA BEM

This document is the confidential and proprietary property of VIDA BEM LLC. It may contain technical information, service descriptions, and commercial cost estimates pertaining to VIDA BEM products and services that are confidential. No part of this document may be reproduced, transmitted, or used for other than the designated purposes without prior permission of VIDA BEM LLC.





VIDA BEM

This document is the confidential and proprietary property of VIDA BEM LLC. It may contain technical information, service descriptions, and commercial cost estimates pertaining to VIDA BEM products and services that are confidential. No part of this document may be reproduced, transmitted, or used for other than the designated purposes without prior permission of VIDA BEM LLC.





1-800-957-2391

**To Schedule an Inspection Please Contact:**

Jose Lozano

Founder

VIDA BEM LLC

Office: 800 957 2391

Tel: 661 303 3190

Cell: 661 303 3190

Email: [jlozano@vidabem.us](mailto:jlozano@vidabem.us)

Visit Us: [www.vidaeq.com](http://www.vidaeq.com)

Subject to prior sale and or other disposition.

Purchasing Party is responsible for verifying accuracy of information provided. All Items to be quoted in US currency. All prices and availability are subject to change without notice and are subject to applicable sales tax. Title to all goods listed remain with the seller until the purchase price is fully paid. Equipment is purchased as is, where is, without warranty unless otherwise specified. Use hours are estimate hours as of the date of this posting and are not guaranteed. Equipment pictured may contain attachments and/or accessories not priced in this offer. Sale subject to terms and conditions on final bill of sale.

This document is the confidential and proprietary property of VIDA BEM LLC. It may contain technical information, service descriptions, and commercial cost estimates pertaining to VIDA BEM products and services that are confidential. No part of this document may be reproduced, transmitted, or used for other than the designated purposes without prior permission of VIDA BEM LLC.