



# VIDA BEM

## IDS 2,000 HP AC DRILLING RIG

This document is the confidential and proprietary property of VIDA BEM LLC. It may contain technical information, service descriptions, and commercial cost estimates pertaining to VIDA BEM products and services that are confidential. No part of this document may be reproduced, transmitted, or used for other than the designated purposes without prior permission of VIDA BEM LLC.

## Disclaimer / Confidentiality Statement

This document is strictly private and confidential, and is being submitted for the sole purpose of responding to an expression of interest (March, 2025) related to the sale of rig equipment being offered by VIDA BEM, LLC. This document contains information that is proprietary and confidential ("Confidential Information") and is being provided for the sole purpose of evaluating this equipment package. Confidential Information includes information relating to the goods, equipment, and/ or services referred to in the proposal, but is not limited to, specifications, designs, drawings, product data, manufacturing processes, installation methods, price lists, technical information, visually transmitted information, trade secrets, software, firmware, and other confidential or proprietary information forming part of this document.

By continuing past this notice to review you agree to keep this information confidential and agree to limit disclosure of the information to only those authorized employees and representatives who need to know the information in order to evaluate this equipment package.

In addition, you agree not to; (i) disclose the information contained in this document to any third parties; (ii) use the information for any purpose other than to evaluate the rig equipment acquisition; (iii) use the information in any other way that might be prejudicial or detrimental to VIDA BEM, LLC and (iv) copy, distribute or reproduce the contents of the proposal information in whole or part.

In the event this equipment package is not considered any further and / or your client is not considered for the award letter, you agree to destroy this document in digital and hard copy forms, and all complete or partial replications or excerpts taken from it, or to return the same to VIDA BEM, LLC.

The equipment owner owns its patents, copyrights, commercial secrets, technology, knowledge, information of any nature ("Intellectual Property"), revealed in connection with the subject matter of this proposal and nothing contained in the same shall be considered as an authorization or transference or license or property rights or rights of any nature of a party towards the other in any matter related with Intellectual Property.

All operating and controls systems mentioned in this document are used for identification purposes only and may be trademarks of their respective owners.

This equipment package is subject to a mutually agreed definitive agreement between our companies, and while the intent is to eventually negotiate and execute the same at a later date, it is expressly understood that this is an equipment description document only and no liability or obligation of any nature whatsoever is intended to be created hereunder.

This document is the confidential and proprietary property of VIDA BEM LLC. It may contain technical information, service descriptions, and commercial cost estimates pertaining to VIDA BEM products and services that are confidential. No part of this document may be reproduced, transmitted, or used for other than the designated purposes without prior permission of VIDA BEM LLC.

This document is the confidential and proprietary property of VIDA BEM LLC. It may contain technical information, service descriptions, and commercial cost estimates pertaining to VIDA BEM products and services that are confidential. No part of this document may be reproduced, transmitted, or used for other than the designated purposes without prior permission of VIDA BEM LLC.

## HISTORY:

**Year of manufacture: 2015**

**Year of Refurbishment: 2023**

**Year of CAT IV: 2023**

- This rig package has been completely recertified and is ready to work today.



This document is the confidential and proprietary property of VIDA BEM LLC. It may contain technical information, service descriptions, and commercial cost estimates pertaining to VIDA BEM products and services that are confidential. No part of this document may be reproduced, transmitted, or used for other than the designated purposes without prior permission of VIDA BEM LLC.

## 2000 AC Electric Drilling Rig Specifications

**MAST:** Gemini 142' Telescoping Mast w/ 850,000# hook load, 30,000ft racking capacity w/ 5in DP & 25,000ft w/ 5.5in DP. Top Drive & Block Transport in the mast; Raises and lowers using newly re-manufactured hydraulic cylinders. Structural work and 10-year Cat IV inspection completed by Oil Works Inc. a 4F API Licensed Facility

**DRAWWORKS:** IDS AC 2000hp w/ 1-3/8" Tuf-Flex DLX compacted drilling line- capable of 680,000# pull on 8 line; New Drill Max 2300hp AC motor w/ whisper clean blower system. Cat IV inspection with New Wichita 436 Air Max Brake

**ENGINES/GENERATOR:** Four (4) Caterpillar 3512C diesel engines each rated at 1476HP; Engines unitized with 1365kW generators; Includes 12,000-gallon fuel tank

**SUBSTRUCTURE:** Gemini 28.5' Substructure w/ 24' clear working height, 850,000# rotary load & 750,000# setback load; utilizes a 6' tall x 8' wide x 50' long pony sub, primary sub raises and lowers using newly re-manufactured hydraulic cylinders. Structural work and 10-year CAT IV completed by Oil Works Inc.

**ROTARY:** Newly Re-manufactured TFI 37-1/2in rotary table independently driven by (1) hydraulic Hagglund motor

**TOP DRIVE:** GDS GDM-500Ton, New CAT IV OEM rebuild- integrated hydraulic IBOP

**TRAVELING BLOCK:** One (1) 500-ton, 6 sheave block w/ 12 line string-up; New CAT IV rebuild

**DRILLER CONTROLS:** New Schlumberger Precise Fit electronic driller, Cyber Chair control system and VFD House; AC drives regulation for Drawworks, Mud Pumps & Top Drive, integrated with PLC technology; 4160V power distribution Reel Rig System. 3000KVA Transformer.

**BOP:** Fully Re-manufacture CAT IV re-certification

One (1) Cameron Type U 13-5/8" 10M Single

One (1) Cameron Type U 13-5/8" Double

One (1) Cameron Type U 13-5/8" 5M t-90 Annular

One (1) Mud Cross

One (1) 4-1/16 10M HCR & Manual Choke,

Two (2) 2-1/16 10M manual choke valves & 10M check valve

This document is the confidential and proprietary property of VIDA BEM LLC. It may contain technical information, service descriptions, and commercial cost estimates pertaining to VIDA BEM products and services that are confidential. No part of this document may be reproduced, transmitted, or used for other than the designated purposes without prior permission of VIDA BEM LLC.



**1-800-957-2391**

**CHOKE MANIFOLD:** Fully re-manufactured CAT IV 4-1/16" 10M choke manifold, hard line wall thickness inspection, 6in buffer tank

**ACCUMULATOR:** Fully re-manufactured CAT IV re-certification R&T Controls 6-Station accumulator w/ PLC & HMI touchscreen remote

**MUD PUMPS:** Three (3) 1600hp Triplex AC pumps w/ 7500 psi working system pressure. Full inspection reports on gear end and seat deck inspections & NDE inspections performed on fluid ends. New pony rods, piston rods, and liner washer system.

**MUD SYSTEM:** 850 BBL total active capacity; Two (2) covered 425 BBL tanks w/ round bottom and electric agitators for optimum mixing/blending and ease of clean out; Each tank contains two (2) 5x6x14 75hp centrifugal pumps; Hopper is remote for ease of use with bulk tanks; three (3) derrick Hyperpool shakers and one (1) Derrick Vacu-Flo 1200 degasser, fully inspected by OEM and are utilized on a hydraulically raised mud processing skid; A separate skid incorporates one (1) 100bbl total trip tank split to 50bbl systems w/ 2x3x12 40hp centrifugal pump; One (1) 48" 1200gpm Mud/Gas separator. All motors passing electrical inspection, all new centrifugal pumps, all valves new and all rubber goods replaced on entire mud system. New hopper assemblies from Process solutions International.

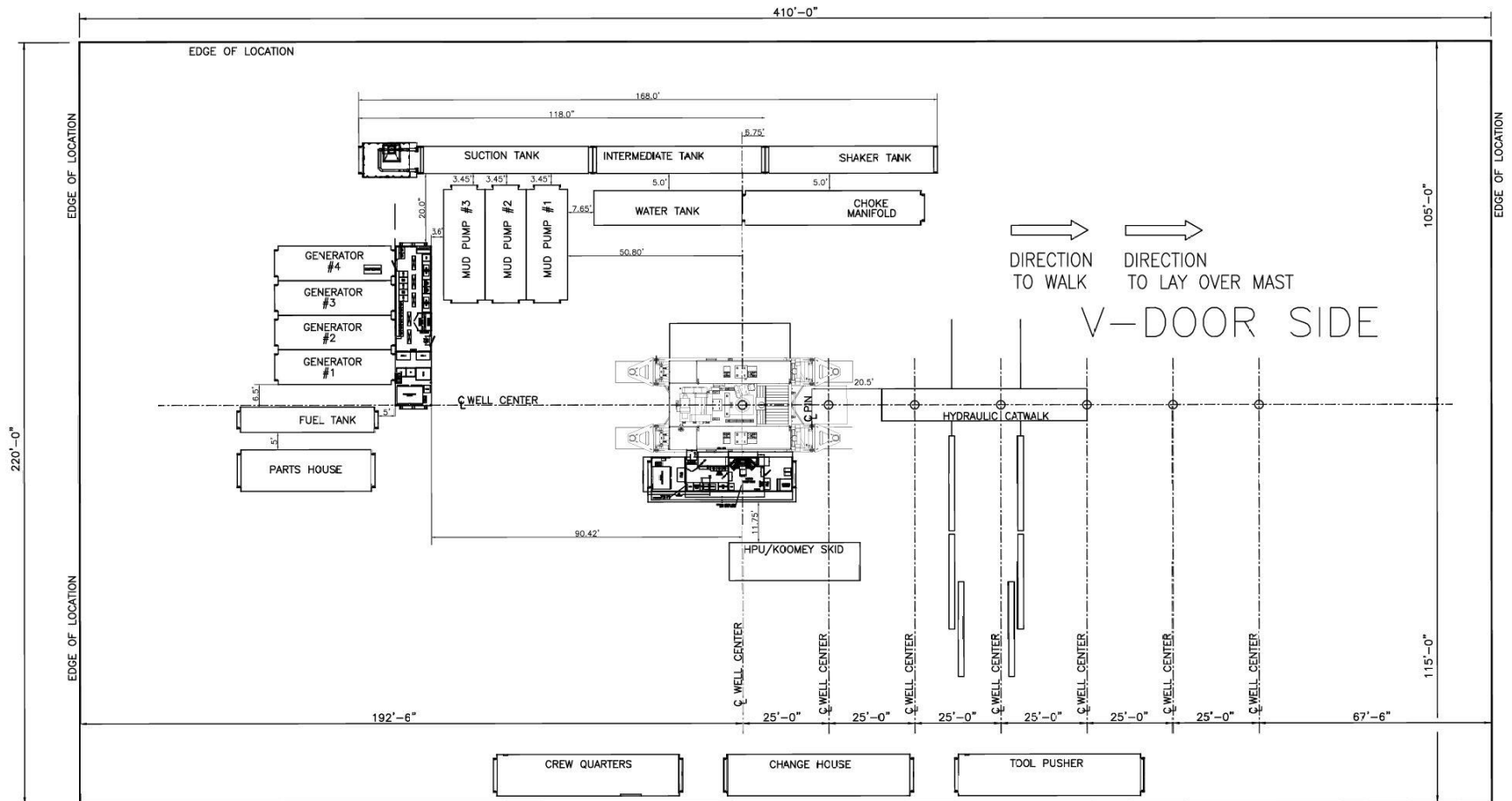
#### **AUXILLARY EQUIPMENT**

- New Oil Works Upgraded walking system X&Y axis capable 300ton/foot rating-remote system operated
- Upgraded rebuild Canrig 3000 hydraulic catwalk w/ independent walking capability upgraded for 28-32ft floor height
- New FR-100/120 compact Hydraulic Pipe Wrench
- Rig Manager, Crew Quarters & Meeting/Change House w/HVAC and 480/240 transformer
- Full Camera and intercom system - 9 cameras: 2 in mast, 1 on catwalk, 3 for pit area and BOP and 1 over each mud pump. Wireless rig manager monitor system.
- 409 BBL, water tank complete with porch extension containing two (2) modular 2x3x12 40hp centrifugal pumps
- Motorized Drill Line Spool
- Full Sala Fall protection system throughout rig with newly certified components
- Two (2) Braden PD-12 Floor winches certified for man-rider use
- One (1) PD-4 Boom Winch

This document is the confidential and proprietary property of VIDA BEM LLC. It may contain technical information, service descriptions, and commercial cost estimates pertaining to VIDA BEM products and services that are confidential. No part of this document may be reproduced, transmitted, or used for other than the designated purposes without prior permission of VIDA BEM LLC.



# WELL LOCATION PLOT



This document is the confidential and proprietary property of VIDA BEM LLC. It may contain technical information, service descriptions, and commercial cost estimates pertaining to VIDA BEM products and services that are confidential. No part of this document may be reproduced, transmitted, or used for other than the designated purposes without prior permission of VIDA BEM LLC.

## 2000 HP DRILLING RIG (TOTAL LOADS ESTIMATE)

The weight and dimension information provided are believed to be accurate estimates of each load.

LOAD #	LOAD DESCRIPTION	WEIGHT LBS	DIMENSIONS		
			LENGTH (ft)	WIDTH (ft)	HEIGHT (ft)
1	GENERATOR SKID	58,500	LEGAL	10'	12'
2	GENERATOR SKID	58,500	LEGAL	10'	12'
3	GENERATOR SKID	58,500	LEGAL	10'	12'
4	GENERATOR SKID	58,500	LEGAL	10'	12'
5	MUD PUMP	115,000	LEGAL	12'	12'6"
6	MUD PUMP	115,000	LEGAL	12'	12'6"
7	MUD PUMP	115,000	LEGAL	12'	12'6"
8	MUD TANK	77,500	LEGAL	12'	11'9"
9	MUD TANK	77,500	LEGAL	12'	11'9"
10	DRAWWORKS	100,000	LEGAL	13'10"	9'
11	WATER TANK	22,820	LEGAL	10'	11'6"
12	SCR HOUSE	97,660	LEGAL	12'	11'4"
13	TOOL HOUSE	58,660	LEGAL	12'	10'10"
14	DRILLERS CABIN	26,000	LEGAL	10'	9'10"
15	PUSHERS HOUSE	73,750	LEGAL	12'6"	10'8"
16	CREW HOUSE	73,500	LEGAL	14'3"	11'2"
17	MANIFOLD SKID	62,300	LEGAL	11'6"	11'2"
18	HYDRAULIC UNIT	77,450	LEGAL	12'	12'
19	DRILLERS SIDE SUBSTRUCTURE	102,100	LEGAL	8'5"	8'6"
20	ODS SUBSTRUCTURE	88,740	LEGAL	8'5"	8'6"
21	PAYNE UNIT/JUNK BOX	75,000	LEGAL	13'1"	11'4"
22	SHAKER SKID	75,000	LEGAL	14'	11'4"
23	FUEL TANK	37,500	LEGAL	11'	10'4"
24	MCC SKID	22,870	LEGAL	10'5"	12'
25	CENTER SUB	87,420	LEGAL	14'	11'11"
26	WALKING BEAM	40,000	LEGAL	7'	10'
27	WALKING FRAME & FOOT (2)	15,000 lbs EACH	LEGAL	10'	8'6"
28	MAST CROWN	135,000	LEGAL	13'11"	16'
29	MAST BOTTOM SECTION	137,000	LEGAL	13'11"	16'

This document is the confidential and proprietary property of VIDA BEM LLC. It may contain technical information, service descriptions, and commercial cost estimates pertaining to VIDA BEM products and services that are confidential. No part of this document may be reproduced, transmitted, or used for other than the designated purposes without prior permission of VIDA BEM LLC.



1-800-957-2391

## RIG INVENTORY

Equipment	Description		Certification Year	Notes
Mast	Manufacture	GEMINI 142'		10 Year CAT IV Complete
	Model	Telescoping		Raises and lowers using newly re-manufactured hydraulic cylinders
	Year			
	Height	142 feet		
	Racking Capacity	25,000 feet of 5.5" pipe	30,000 feet of 5" pipe	
	Rating	850,000 pounds		
Substructure	Manufacture	NOV		
	Year	2010		
	Height	25 feet		
	Clear Height	21 feet 6 inches		
	Rotary Load	750,000 pounds		Sub raises and lowers with hydraulic cylinders
	Setback Load	500,000 pounds		
Draw works	Manufacture	IDS		Cat IV inspection with new bearings
	Hours	25 hours since rebuild		New Wichita 436 Air Max Brake
	Model	AC 2000HP		
	Year			
	Motor Manufacture	Drill Max 2300hp AC		New Motor
	Motor Model	GEQ		
	Motor Year			

This document is the confidential and proprietary property of VIDA BEM LLC. It may contain technical information, service descriptions, and commercial cost estimates pertaining to VIDA BEM products and services that are confidential. No part of this document may be reproduced, transmitted, or used for other than the designated purposes without prior permission of VIDA BEM LLC.



	<b>Horsepower</b>	<b>2300 HP</b>		
	<b>Drill Line</b>	<b>1-3/8 inch</b>		<b>Tuf-Flex DLX compacted drilling line</b>
<b>Top Drive</b>	<b>Manufacture</b>	<b>GDS</b>		<b>New CAT IV OEM rebuild</b>
	<b>Hours</b>	<b>25 Hours</b>		
	<b>Model</b>	<b>GDM 500</b>		
	<b>Year</b>			
	<b>Rating</b>	<b>500 Ton</b>		
	<b>Motor Manufacture</b>	<b>GE B20</b>		
	<b>Motor HP</b>	<b>1200</b>		<b>AC Motor</b>
<b>Top Drive VFD</b>	<b>Manufacture</b>	<b>Omron</b>		
	<b>Year</b>			
<b>Generators</b>	<b>Quantity</b>	<b>4</b>		<b>Includes 12,000-gallon fuel tank</b>
	<b>Engine 1 HRS</b>	<b>20,729</b>		
	<b>Engine 2 HRS</b>	<b>20,640</b>		
	<b>Engine 3 HRS</b>	<b>28,646</b>		
	<b>Engine 4 HRS</b>	<b>23,832</b>		
	<b>Engine Manufacture</b>	<b>Caterpillar</b>		
	<b>Engine Model</b>	<b>3512</b>		
	<b>Engine Year</b>			
	<b>Horsepower</b>	<b>1476 each</b>		<b>w/Air Start</b>
	<b>kW</b>	<b>1375 each</b>		
	<b>kVa</b>			
	<b>Fuel</b>	<b>Diesel</b>		

This document is the confidential and proprietary property of VIDA BEM LLC. It may contain technical information, service descriptions, and commercial cost estimates pertaining to VIDA BEM products and services that are confidential. No part of this document may be reproduced, transmitted, or used for other than the designated purposes without prior permission of VIDA BEM LLC.

	Generator Manufacture	KATO		
	Generator Model	AA27647015		
	Generator Year			
<b>Mud Pumps</b>	<b>Quantity</b>	<b>3</b>		
	MP 1 HRS	10,599		Rebuilt
	MP 2 HRS	6,473		Rebuilt
	MP 3 HRS	10,637		
	Pump Manufacture	BOMCO		
	Pump Model	F-1600 Triplex		
	Pump Year			
	Fluid End			
	Motor Manufacture	GE Drilling Drives		
	Motor Model	GEB 29-A1		AC Traction Motor
	Motor Year	2009		
	Motor Volts	577 each		
	Motor Amps	1375 each		
	Horsepower	1500 each		
<b>Mud Tanks</b>	<b>Quantity</b>	<b>2</b>		<b>Round bottom tanks</b>
	Volume	425 bbl. each		
	Dimensions	12' x 53'		
	Agitators	Seven (7) Total		
	Gun Lines	None (Round bottom tanks)		
	Ports	Five (5) discharge		

This document is the confidential and proprietary property of VIDA BEM LLC. It may contain technical information, service descriptions, and commercial cost estimates pertaining to VIDA BEM products and services that are confidential. No part of this document may be reproduced, transmitted, or used for other than the designated purposes without prior permission of VIDA BEM LLC.

	Pump Quantity	2 each		
	Pump Size	5x6x14		
	Pump Motor	75 HP		
Mud System	Shakers	Three (3) Derrick Hyperpool Shakers		
	Degasser	Derrick Vacu-Flo		
	Degasser Capacity	1200 GPM		
	De-silter			
	Mud/Gas Separator	One (1) 48"		1200 GPM
	Trip Tank	One (1) 100 bbl. with 2x3 40 HP pump		
Crown	Manufacture	NOV		
	Year			
Rotary Table	Manufacture	TFI ZP375		Re-manufactured
	Size	37-1/2"		
	Motor	Hagglund		
BOP	Manufacture	CAMERON		
	Year	2014		
	Model	Cameron Type U 13-5/8" 10M Single		Fully Re-manufacture CAT IV re-certification
		Cameron Type U 13-5/8" Double		Fully Re-manufacture CAT IV re-certification
		Cameron Type U 13-5/8" 5M t-90 Annular		Fully Re-manufacture CAT IV re-certification
		One (1) NOV BOP Handler		

This document is the confidential and proprietary property of VIDA BEM LLC. It may contain technical information, service descriptions, and commercial cost estimates pertaining to VIDA BEM products and services that are confidential. No part of this document may be reproduced, transmitted, or used for other than the designated purposes without prior permission of VIDA BEM LLC.

Accumulator	Manufacture	Consolidated Pressure Control		Fully re-manufactured CAT IV re-certification
	Year			
	Model	6 Station		
Choke Manifold	Manufacture	Orion	Fully re-manufactured CAT IV	
	Year			
	Model	4-1/16" 10K		
Iron Roughneck	Manufacture	FORUM		NEW
	Year	???		
	Model	FR 100/120		
	Size Range	4" to 8-1/2"		
	Make Up Torque	80,000 ft-lbs		
	Break Out Torque	100,000 ft-lbs		
Blocks	Manufacture	American Block	New CAT IV rebuild	6 sheave block w/ 12 line string-up
	Year	???		
	Model	500 Ton		
	Capacity	500 Ton		
Additional Equipment	75-foot walking system			
	New Oil Works Upgraded walking system X&Y axis capable 300ton/foot rating-remote system operated			
	Upgraded rebuild CANRIG 3000 hydraulic catwalk w/ independent			

This document is the confidential and proprietary property of VIDA BEM LLC. It may contain technical information, service descriptions, and commercial cost estimates pertaining to VIDA BEM products and services that are confidential. No part of this document may be reproduced, transmitted, or used for other than the designated purposes without prior permission of VIDA BEM LLC.

	walking capability upgraded for 28-32ft floor height		
	New FR-100/120 compact Hydraulic Pipe Wrench		
	Rig Manager, Crew Quarters & Meeting/Change House w/HVAC and 480/240 transformer		
	Full Camera and intercom system - 9 cameras: 2 in mast, 1 on catwalk, 3 for pit area and BOP and 1 over each mud pump. Wireless rig manager monitor system.		
	409 BBL, water tank complete with porch extension containing two (2) modular 2x3x12 40hp centrifugal pumps		
	Full Sala Fall protection system throughout rig with newly certified components		
	Two (2) Braden PD-12 Floor winches certified for man-rider use, One (1) PD-4 Boom Winch		

This document is the confidential and proprietary property of VIDA BEM LLC. It may contain technical information, service descriptions, and commercial cost estimates pertaining to VIDA BEM products and services that are confidential. No part of this document may be reproduced, transmitted, or used for other than the designated purposes without prior permission of VIDA BEM LLC.

## MAJOR COMPONENT HOURS

**1. IDS DRAWWORKS, 2000-HP,** (1) NEW GEQ DRILL MAX 2300HP AC TRACTION MOTOR W/

WHISPER QUIET BLOWER SYSTEM, 436 WICHITA AIR MAX BRAKE, S/N- IDS15005031,  
HOURS SINCE RE-BUILD/RECERT- <25HRS

**2. (4) CATERPILLAR 3512 DIESEL ENGINES** EACH RATED AT 1476-HP, W/ AIR START, SKID

MOUNT ENCLOSURES, W/ GENERATORS- (4) KATO ENGINEERING, MODEL AA27647015,  
WEG 1375-KW GENERATORS, UNITIZED, W/ ENGINES

ENGINE 1 S/N- LLA02740, HRS- 20,729

ENGINE 2 S/N- LLA02749, HRS- 20,640

ENGINE 3 S/N- LLA04822 HRS- 28,646

ENGINE 4 S/N- LLA04536, HRS- 23,832

**3. (3) BOMCO, F-1600, TRIPLEX MUD PUMPS 7500 PSI,** GEB-29 AC TRACTION MOTOR, 1500-HP, 6" CERAMIC LINERS, 6 X 5 X 14 CHARGING PUMP, 1 X 1.5C LINER WASHING PUMP.

MP 1 S/N- M02-2003, HRS/REBULD- 10,599

MP 2 S/N- SB06-046, HRS/REBUILD- 6,473

MP 3 S/N- 14-005, HRS- 10,637

**4. GDM 500ton TOP DRIVE,** LEVEL 4 RECERTIFICATION COMPLETED AUGUST 2023, 1200HP AC MOTOR, S/N #47 HRS- <25HRS

This document is the confidential and proprietary property of VIDA BEM LLC. It may contain technical information, service descriptions, and commercial cost estimates pertaining to VIDA BEM products and services that are confidential. No part of this document may be reproduced, transmitted, or used for other than the designated purposes without prior permission of VIDA BEM LLC.





This document is the confidential and proprietary property of VIDA BEM LLC. It may contain technical information, service descriptions, and commercial cost estimates pertaining to VIDA BEM products and services that are confidential. No part of this document may be reproduced, transmitted, or used for other than the designated purposes without prior permission of VIDA BEM LLC.





This document is the confidential and proprietary property of VIDA BEM LLC. It may contain technical information, service descriptions, and commercial cost estimates pertaining to VIDA BEM products and services that are confidential. No part of this document may be reproduced, transmitted, or used for other than the designated purposes without prior permission of VIDA BEM LLC.





This document is the confidential and proprietary property of VIDA BEM LLC. It may contain technical information, service descriptions, and commercial cost estimates pertaining to VIDA BEM products and services that are confidential. No part of this document may be reproduced, transmitted, or used for other than the designated purposes without prior permission of VIDA BEM LLC.



This document is the confidential and proprietary property of VIDA BEM LLC. It may contain technical information, service descriptions, and commercial cost estimates pertaining to VIDA BEM products and services that are confidential. No part of this document may be reproduced, transmitted, or used for other than the designated purposes without prior permission of VIDA BEM LLC.





This document is the confidential and proprietary property of VIDA BEM LLC. It may contain technical information, service descriptions, and commercial cost estimates pertaining to VIDA BEM products and services that are confidential. No part of this document may be reproduced, transmitted, or used for other than the designated purposes without prior permission of VIDA BEM LLC.



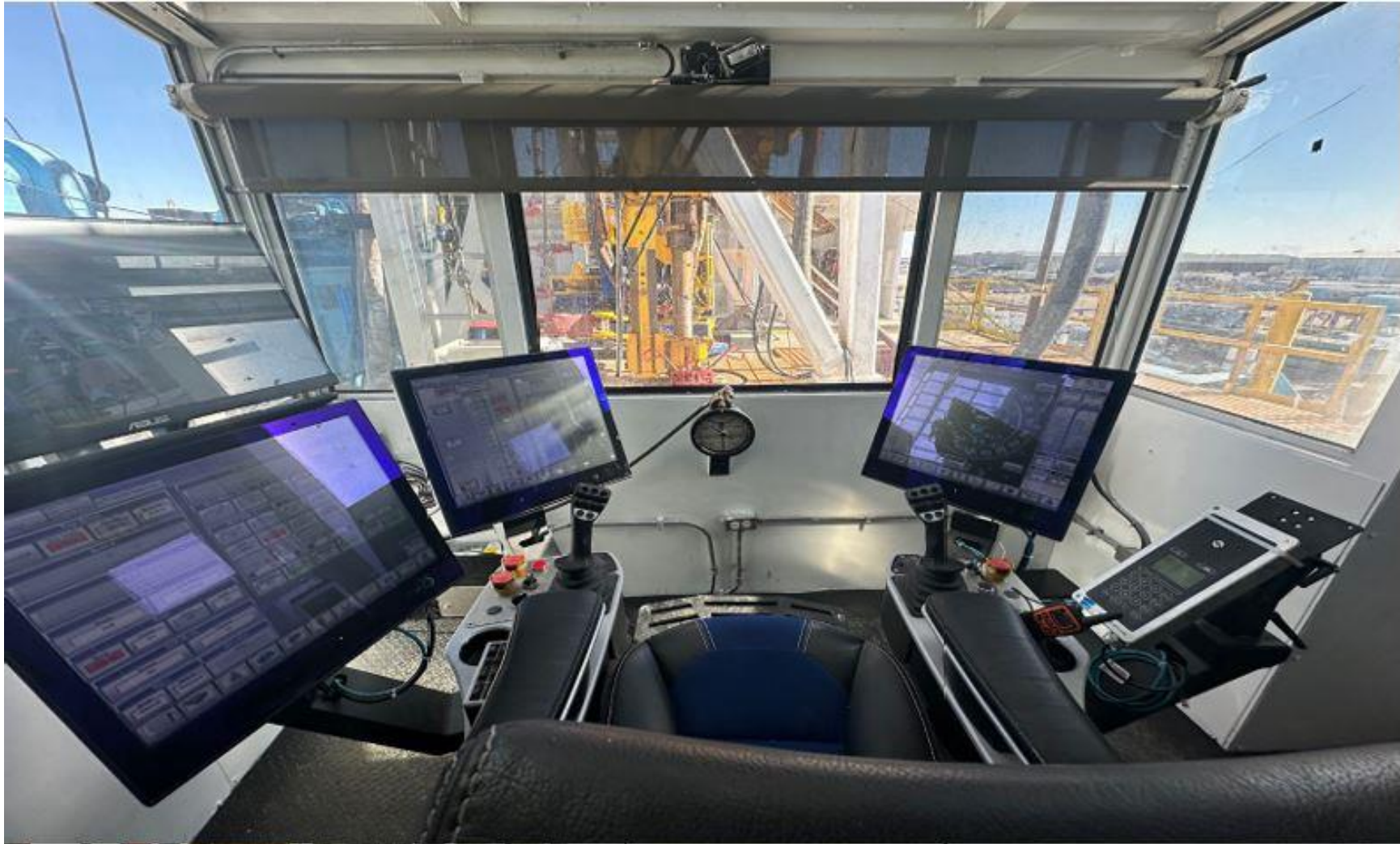


This document is the confidential and proprietary property of VIDA BEM LLC. It may contain technical information, service descriptions, and commercial cost estimates pertaining to VIDA BEM products and services that are confidential. No part of this document may be reproduced, transmitted, or used for other than the designated purposes without prior permission of VIDA BEM LLC.





This document is the confidential and proprietary property of VIDA BEM LLC. It may contain technical information, service descriptions, and commercial cost estimates pertaining to VIDA BEM products and services that are confidential. No part of this document may be reproduced, transmitted, or used for other than the designated purposes without prior permission of VIDA BEM LLC.



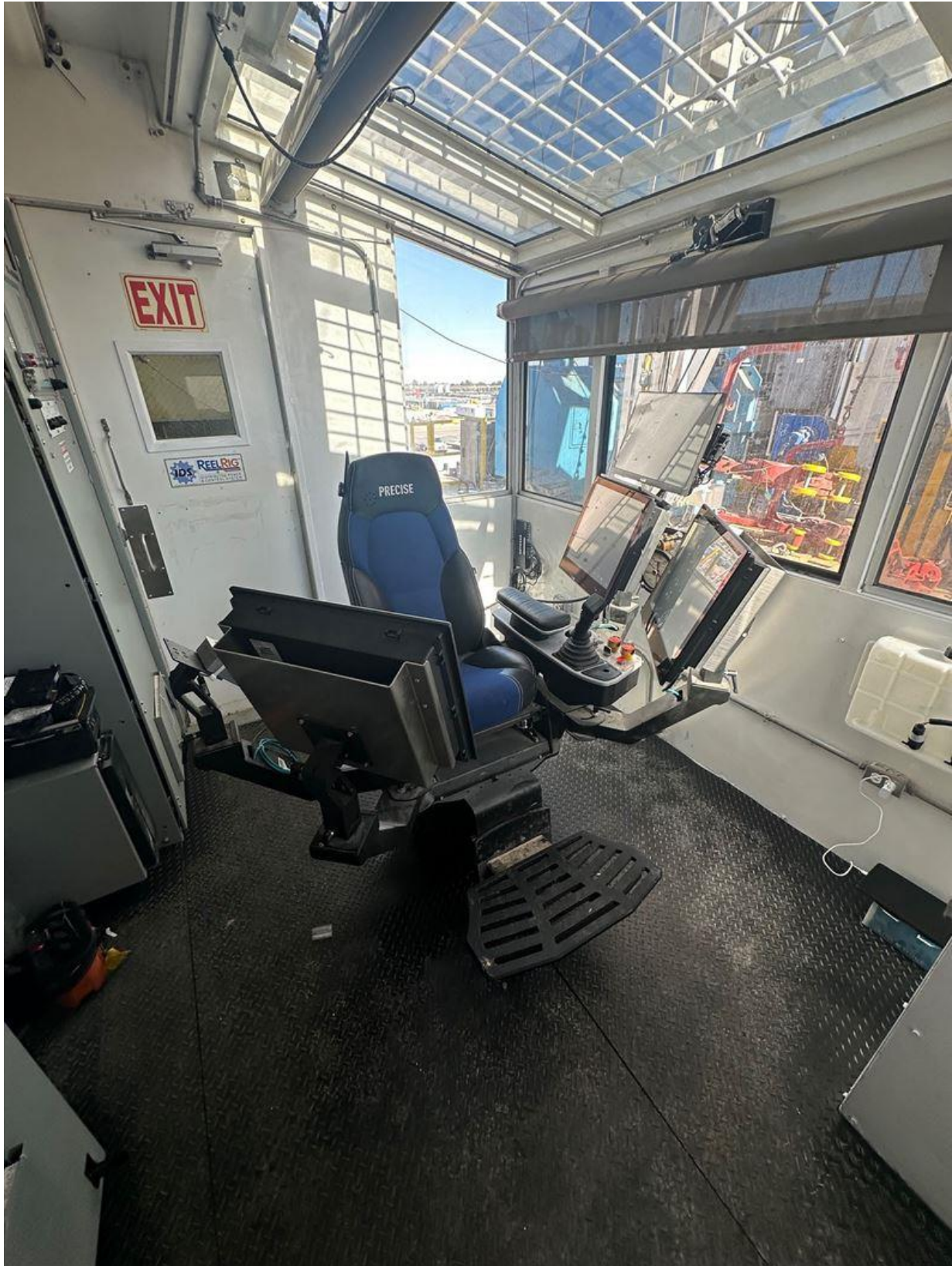
This document is the confidential and proprietary property of VIDA BEM LLC. It may contain technical information, service descriptions, and commercial cost estimates pertaining to VIDA BEM products and services that are confidential. No part of this document may be reproduced, transmitted, or used for other than the designated purposes without prior permission of VIDA BEM LLC.





This document is the confidential and proprietary property of VIDA BEM LLC. It may contain technical information, service descriptions, and commercial cost estimates pertaining to VIDA BEM products and services that are confidential. No part of this document may be reproduced, transmitted, or used for other than the designated purposes without prior permission of VIDA BEM LLC.





This document is the confidential and proprietary property of VIDA BEM LLC. It may contain technical information, service descriptions, and commercial cost estimates pertaining to VIDA BEM products and services that are confidential. No part of this document may be reproduced, transmitted, or used for other than the designated purposes without prior permission of VIDA BEM LLC.





This document is the confidential and proprietary property of VIDA BEM LLC. It may contain technical information, service descriptions, and commercial cost estimates pertaining to VIDA BEM products and services that are confidential. No part of this document may be reproduced, transmitted, or used for other than the designated purposes without prior permission of VIDA BEM LLC.



This document is the confidential and proprietary property of VIDA BEM LLC. It may contain technical information, service descriptions, and commercial cost estimates pertaining to VIDA BEM products and services that are confidential. No part of this document may be reproduced, transmitted, or used for other than the designated purposes without prior permission of VIDA BEM LLC.





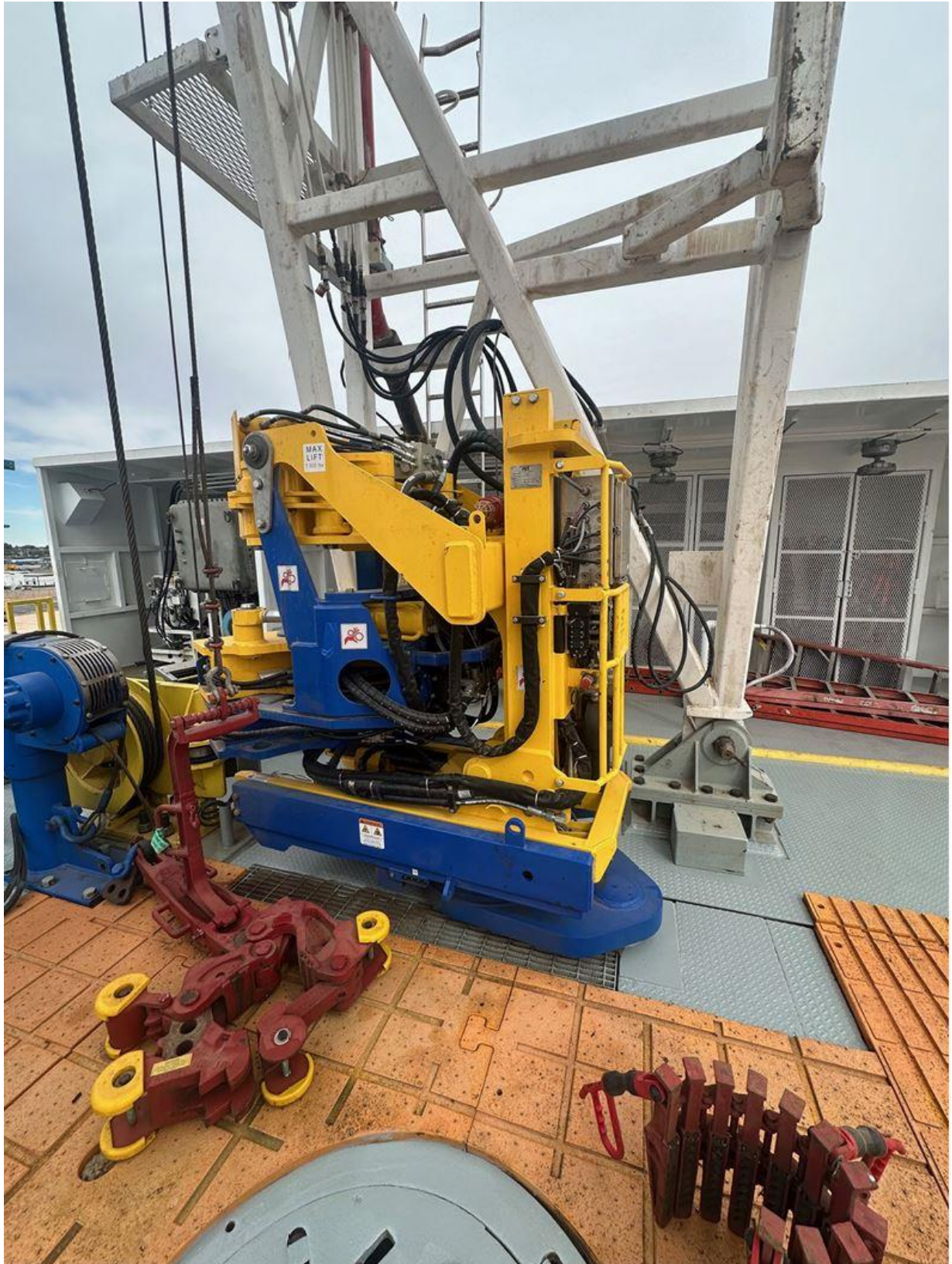
This document is the confidential and proprietary property of VIDA BEM LLC. It may contain technical information, service descriptions, and commercial cost estimates pertaining to VIDA BEM products and services that are confidential. No part of this document may be reproduced, transmitted, or used for other than the designated purposes without prior permission of VIDA BEM LLC.





This document is the confidential and proprietary property of VIDA BEM LLC. It may contain technical information, service descriptions, and commercial cost estimates pertaining to VIDA BEM products and services that are confidential. No part of this document may be reproduced, transmitted, or used for other than the designated purposes without prior permission of VIDA BEM LLC.





This document is the confidential and proprietary property of VIDA BEM LLC. It may contain technical information, service descriptions, and commercial cost estimates pertaining to VIDA BEM products and services that are confidential. No part of this document may be reproduced, transmitted, or used for other than the designated purposes without prior permission of VIDA BEM LLC.





This document is the confidential and proprietary property of VIDA BEM LLC. It may contain technical information, service descriptions, and commercial cost estimates pertaining to VIDA BEM products and services that are confidential. No part of this document may be reproduced, transmitted, or used for other than the designated purposes without prior permission of VIDA BEM LLC.



This document is the confidential and proprietary property of VIDA BEM LLC. It may contain technical information, service descriptions, and commercial cost estimates pertaining to VIDA BEM products and services that are confidential. No part of this document may be reproduced, transmitted, or used for other than the designated purposes without prior permission of VIDA BEM LLC.





This document is the confidential and proprietary property of VIDA BEM LLC. It may contain technical information, service descriptions, and commercial cost estimates pertaining to VIDA BEM products and services that are confidential. No part of this document may be reproduced, transmitted, or used for other than the designated purposes without prior permission of VIDA BEM LLC.





This document is the confidential and proprietary property of VIDA BEM LLC. It may contain technical information, service descriptions, and commercial cost estimates pertaining to VIDA BEM products and services that are confidential. No part of this document may be reproduced, transmitted, or used for other than the designated purposes without prior permission of VIDA BEM LLC.



This document is the confidential and proprietary property of VIDA BEM LLC. It may contain technical information, service descriptions, and commercial cost estimates pertaining to VIDA BEM products and services that are confidential. No part of this document may be reproduced, transmitted, or used for other than the designated purposes without prior permission of VIDA BEM LLC.





This document is the confidential and proprietary property of VIDA BEM LLC. It may contain technical information, service descriptions, and commercial cost estimates pertaining to VIDA BEM products and services that are confidential. No part of this document may be reproduced, transmitted, or used for other than the designated purposes without prior permission of VIDA BEM LLC.



This document is the confidential and proprietary property of VIDA BEM LLC. It may contain technical information, service descriptions, and commercial cost estimates pertaining to VIDA BEM products and services that are confidential. No part of this document may be reproduced, transmitted, or used for other than the designated purposes without prior permission of VIDA BEM LLC.





This document is the confidential and proprietary property of VIDA BEM LLC. It may contain technical information, service descriptions, and commercial cost estimates pertaining to VIDA BEM products and services that are confidential. No part of this document may be reproduced, transmitted, or used for other than the designated purposes without prior permission of VIDA BEM LLC.





This document is the confidential and proprietary property of VIDA BEM LLC. It may contain technical information, service descriptions, and commercial cost estimates pertaining to VIDA BEM products and services that are confidential. No part of this document may be reproduced, transmitted, or used for other than the designated purposes without prior permission of VIDA BEM LLC.



This document is the confidential and proprietary property of VIDA BEM LLC. It may contain technical information, service descriptions, and commercial cost estimates pertaining to VIDA BEM products and services that are confidential. No part of this document may be reproduced, transmitted, or used for other than the designated purposes without prior permission of VIDA BEM LLC.





This document is the confidential and proprietary property of VIDA BEM LLC. It may contain technical information, service descriptions, and commercial cost estimates pertaining to VIDA BEM products and services that are confidential. No part of this document may be reproduced, transmitted, or used for other than the designated purposes without prior permission of VIDA BEM LLC.





This document is the confidential and proprietary property of VIDA BEM LLC. It may contain technical information, service descriptions, and commercial cost estimates pertaining to VIDA BEM products and services that are confidential. No part of this document may be reproduced, transmitted, or used for other than the designated purposes without prior permission of VIDA BEM LLC.





This document is the confidential and proprietary property of VIDA BEM LLC. It may contain technical information, service descriptions, and commercial cost estimates pertaining to VIDA BEM products and services that are confidential. No part of this document may be reproduced, transmitted, or used for other than the designated purposes without prior permission of VIDA BEM LLC.





This document is the confidential and proprietary property of VIDA BEM LLC. It may contain technical information, service descriptions, and commercial cost estimates pertaining to VIDA BEM products and services that are confidential. No part of this document may be reproduced, transmitted, or used for other than the designated purposes without prior permission of VIDA BEM LLC.





This document is the confidential and proprietary property of VIDA BEM LLC. It may contain technical information, service descriptions, and commercial cost estimates pertaining to VIDA BEM products and services that are confidential. No part of this document may be reproduced, transmitted, or used for other than the designated purposes without prior permission of VIDA BEM LLC.



This document is the confidential and proprietary property of VIDA BEM LLC. It may contain technical information, service descriptions, and commercial cost estimates pertaining to VIDA BEM products and services that are confidential. No part of this document may be reproduced, transmitted, or used for other than the designated purposes without prior permission of VIDA BEM LLC.





This document is the confidential and proprietary property of VIDA BEM LLC. It may contain technical information, service descriptions, and commercial cost estimates pertaining to VIDA BEM products and services that are confidential. No part of this document may be reproduced, transmitted, or used for other than the designated purposes without prior permission of VIDA BEM LLC.





This document is the confidential and proprietary property of VIDA BEM LLC. It may contain technical information, service descriptions, and commercial cost estimates pertaining to VIDA BEM products and services that are confidential. No part of this document may be reproduced, transmitted, or used for other than the designated purposes without prior permission of VIDA BEM LLC.



1-800-957-2391

**To Schedule an Inspection Please Contact:**

Jose Lozano

Founder

VIDA BEM LLC

Office: 800 957 2391

Tel: 661 303 3190

Cell: 661 303 3190

Email: [jlozano@vidabem.us](mailto:jlozano@vidabem.us)

Visit Us: [www.vidaeq.com](http://www.vidaeq.com)



This document is the confidential and proprietary property of VIDA BEM LLC. It may contain technical information, service descriptions, and commercial cost estimates pertaining to VIDA BEM products and services that are confidential. No part of this document may be reproduced, transmitted, or used for other than the designated purposes without prior permission of VIDA BEM LLC.