



VIDA BEM

**2000 HP JACK UP RIG**

**MOBILE JACK-UP CANTILEVER DRILLING RIG**

This document is the confidential and proprietary property of VIDA BEM LLC. It may contain technical information, service descriptions, and commercial cost estimates pertaining to VIDA BEM products and services that are confidential. No part of this document may be reproduced, transmitted, or used for other than the designated purposes without prior permission of VIDA BEM LLC.

## Disclaimer / Confidentiality Statement

This document is strictly private and confidential, and is being submitted for the sole purpose of responding to an expression of interest related to the sale of rig equipment being offered by VIDA BEM, LLC. This document contains information that is proprietary and confidential ("Confidential Information") and is being provided for the sole purpose of evaluating this equipment package. Confidential Information includes information relating to the goods, equipment, and/ or services referred to in the proposal, but is not limited to, specifications, designs, drawings, product data, manufacturing processes, installation methods, price lists, technical information, visually transmitted information, trade secrets, software, firmware, and other confidential or proprietary information forming part of this document.

By continuing past this notice to review you agree to keep this information confidential and agree to limit disclosure of the information to only those authorized employees and representatives who need to know the information in order to evaluate this equipment package.

In addition, you agree not to; (i) disclose the information contained in this document to any third parties; (ii) use the information for any purpose other than to evaluate the equipment acquisition; (iii) use the information in any other way that might be prejudicial or detrimental to VIDA BEM, LLC and (iv) copy, distribute or reproduce the contents of the proposal information in whole or part.

In the event this equipment package is not considered any further and / or your client is not considered for the award letter, you agree to destroy this document in digital and hard copy forms, and all complete or partial replications or excerpts taken from it, or to return the same to VIDA BEM, LLC.

The equipment owner owns its patents, copyrights, commercial secrets, technology, knowledge, information of any nature ("Intellectual Property"), revealed in connection with the subject matter of this proposal and nothing contained in the same shall be considered as an authorization or transference or license or property rights or rights of any nature of a party towards the other in any matter related with Intellectual Property.

All operating and controls systems mentioned in this document are used for identification purposes only and may be trademarks of their respective owners.

This equipment package is subject to a mutually agreed definitive agreement between our companies, and while the intent is to eventually negotiate and execute the same at a later date, it is expressly understood that this is an equipment description document only and no liability or obligation of any nature whatsoever is intended to be created hereunder.

This document is the confidential and proprietary property of VIDA BEM LLC. It may contain technical information, service descriptions, and commercial cost estimates pertaining to VIDA BEM products and services that are confidential. No part of this document may be reproduced, transmitted, or used for other than the designated purposes without prior permission of VIDA BEM LLC.

This document is the confidential and proprietary property of VIDA BEM LLC. It may contain technical information, service descriptions, and commercial cost estimates pertaining to VIDA BEM products and services that are confidential. No part of this document may be reproduced, transmitted, or used for other than the designated purposes without prior permission of VIDA BEM LLC.

## HISTORY

**YEAR OF CONSTRUCTION:** 1971

**REFURBISHED AND UPGRADED:** 2015

Last class survey was conducted in August 2015. Major Renovation was made in 2015, with small part-time jobs and preventive maintenance were done within the subsequent years. Last condition assessment was conducted in December 2017.

**LAST INSPECTION:** December, 2017

**Flag:** Panama

**Builder:** Upper Clyde Shipbuilders LTD, Scotland

**Status:** Expired 2020, ABS Class Certification

**ABS Class Notations:** A1, Self Elevating Drilling Unit, AMS

**Proof of Funds must be presented prior to scheduling an inspection**

**Inspection at buyer expense.**

Subject to prior sale and or other disposition.

Purchasing Party is responsible for verifying accuracy of information provided. All Items to be quoted in US currency. All prices and availability are subject to change without notice and are subject to applicable sales tax. Title to all goods listed remain with the seller until the purchase price is fully paid. Equipment is purchased as is, where is, without warranty unless otherwise specified. Use hours are estimate hours as of the date of this posting and are not guaranteed. Equipment pictured may contain attachments and/or accessories not priced in this offer. Sale subject to terms and conditions on final bill of sale.

This document is the confidential and proprietary property of VIDA BEM LLC. It may contain technical information, service descriptions, and commercial cost estimates pertaining to VIDA BEM products and services that are confidential. No part of this document may be reproduced, transmitted, or used for other than the designated purposes without prior permission of VIDA BEM LLC.

## SHIP INFO

IMO number	8753299
MMSI	354620000
Name of the ship	BENNEVIS
Former names	
Vessel type	Self Elevating Drilling Unit
Operating status	Laid up
Flag	Panama
Gross tonnage	7,038 tons
Overall Length	286 ft
Overall Width	141 ft
Year of build	1971
Builder	UPPRER CLYDE SHIPBUILDERS LTD, SCOTLAND
Home port	Current location Red Sea
Description	MOBILE JACK-UP CANTILEVER DRILLING RIG SELF PROPELLED. SELF ELEVATING, 4 LEGS DESIGN CONSTRUCTION YARD: JOHN BROWN, CLYDE, SCOTLAND YEAR OF CONSTRUCTION: 1971

This document is the confidential and proprietary property of VIDA BEM LLC. It may contain technical information, service descriptions, and commercial cost estimates pertaining to VIDA BEM products and services that are confidential. No part of this document may be reproduced, transmitted, or used for other than the designated purposes without prior permission of VIDA BEM LLC.

## TECHNICAL SPECIFICATIONS

### MAIN DIMENSIONS

**OVERALL LENGTH (INCLUDING HELIDECK):** 286 ft

**OVERALL WIDTH (INCLUDING ANCHOR RACKS):** 141 ft

**HULL LENGTH:** 297 ft

**HULL WIDTH:** 141 ft

**HULL DEPTH:** 22 ft

**NUMBER OF LEGS/LENGTH:** 4x356 (INCLUDING SPUD CAN)

**LEG LENGTH AVAILABLE BELOW HULL:** 306 ft (INCLUDING SPUD CAN)

**TYPE OF LEG:** TRIANGULAR TRUSSED

**LIGHT SHIP:** 11,809 lt

**DISPLACEMENT AT LOADLINE:** 11,801 lt

**FUEL CONSUMPTION (AVG. DRILLING):** 90 bbl. / 120 day

**ACCOMMODATION FOR MAXIMUM OF PERSONNEL:** 84

### STORAGE CAPACITIES

**VARIABLE LOAD CAPACITY (EXCLUSIVE OF DRILLING LOADS):** 2789 s tons

**FUEL:** 4,980 bbl.

**DRILLING WATER:** 3,442 bbl.

**PORTABLE WATER:** 700 bbl.

**MUD PROCESSING TANK:** 417 bbl.

**ACTIVE LIQUID MUD:** 1,904 bbl.

This document is the confidential and proprietary property of VIDA BEM LLC. It may contain technical information, service descriptions, and commercial cost estimates pertaining to VIDA BEM products and services that are confidential. No part of this document may be reproduced, transmitted, or used for other than the designated purposes without prior permission of VIDA BEM LLC.

**HELICOPTER LANDING DECK****LOCATION (FRWD/AFT/PORT/STBD): BOW****DIMENSIONS: 72.8 ft****PERIMETER SAFETY NET FITTED****DESIGNED FOR HELICOPTER TYPE: S61N – BELL 212 – DOLPHIN****COVERED BY FOAM FIRE SYSTEM: YES**

This document is the confidential and proprietary property of VIDA BEM LLC. It may contain technical information, service descriptions, and commercial cost estimates pertaining to VIDA BEM products and services that are confidential. No part of this document may be reproduced, transmitted, or used for other than the designated purposes without prior permission of VIDA BEM LLC.

## LOAD LIMITS

Total Variable load 2,789st

## MAXIMUM CANTILEVER LOADS

Hook Load 800,000 lbs.

Rotary Load 800,000 lbs.

Setback load 400,000 lbs.

Cantilever pipe racks 600,000 lbs.

Total hook, rotary, setback (Subject to limitations)

## INDIVIDUAL VARIABLE LIMITS

Tubular in pipe racks about 400st

Liquid mud 1,600 bbl.

Sack Materials about 1400 sacks (for easy handling)

Drill water 3,470 bbl.

Potable water 740 bbl.

Fuel oil 9,637 bbl.

Bulk mud & cement 840 bbl.

Preload & Surge tank 5,354 bbl.

This document is the confidential and proprietary property of VIDA BEM LLC. It may contain technical information, service descriptions, and commercial cost estimates pertaining to VIDA BEM products and services that are confidential. No part of this document may be reproduced, transmitted, or used for other than the designated purposes without prior permission of VIDA BEM LLC.

## **DRILLING EQUIPMENT & LAYOUT**

**DERRICK:** Lee C. Moore, 30 ft X45 ft base x 160 ft high. Rated at 1,300,000 lbs.

**SET BACK CAPACITY:** 175 stands of 5-inch drill pipe and 7 stands of g 1/2-inch collars.

## **DERRICK OUTFIT**

**DEADLINE ANCHOR** – National Type E with Martin Decker E-80 Sensator. Lee C. Moore 3-well.

**500T CROWN BLOCK** equipped with 7 × 60-inch sheaves National 60-G500, 500 t combination hook and travelling block.

**VARCO TOP-DRIVE.** Model TDS-3, drilling system complete with 1000 hp DC drilling motor assembly reduction gears, torque wrench (pipe handler), support and drillers control consol.

Two National Model P-500 swivels.

## **DRAW- WORKS**

National Model 1320 UE driven by two GE 752 DC motors of 1000 hp each. Draw-works complete with Baylor Model 7828 dynamic auxiliary brake.

Lebus grooving for 1 3/8-inch wireline.

National Type B-1 make-up and breakout catheads, and Crown-o-Matic crown block protector.

Halliburton wire line unit complete with 14000 ft of 0.092-inch wire.

TOTCO single shot non- directional survey instrument.

## **ROTARY**

National Type C-375 (37-1/2 inch).

Rotary is complete with Varco 6600 Type MPCH master casing bushing and Varco type HDP roller Kelly bushing (Rotary is available as back – up to Top Drive system if required).

This document is the confidential and proprietary property of VIDA BEM LLC. It may contain technical information, service descriptions, and commercial cost estimates pertaining to VIDA BEM products and services that are confidential. No part of this document may be reproduced, transmitted, or used for other than the designated purposes without prior permission of VIDA BEM LLC.



## **CANTILEVER AND SUB- STRUCTURE SKIDDING**

### **Drilling area**

10 ft to 60 ft outreach and 10ft either side of drill center.

The Cantilever includes a pipe rack. (There is another pipe rack on the main deck)

## **BLOW.OUT PREVENTION & WELL CONTROL**

### **Blow-out Prevention**

Two Double Cameron 13-5/8" Type U. 10,000 psi Working Pressure.

One Hydril 13-5/8", Type GL spherical BOP- 5,000 psi WP annular type.

One Shaffer 20" annular BOP – 2000 psi WP.

### **CHOKE MANIFOLD**

Cameron 3-1/16" – 10,000 Psi W

### **BOP CONTROL**

Koomey Model T-151-60 (160 gals) with remote control Unit Model T .151-80-35

### **DIVERTER**

Hydril 29-1/2", Type MSP- 500 Psi WP.

This document is the confidential and proprietary property of VIDA BEM LLC. It may contain technical information, service descriptions, and commercial cost estimates pertaining to VIDA BEM products and services that are confidential. No part of this document may be reproduced, transmitted, or used for other than the designated purposes without prior permission of VIDA BEM LLC.

## **MUD SYSTEM**

Two National Type 12P-160 Mud Pumps, 5,000 PSI

Two Mission 6" x 8" centrifugal mud mixing Pumps.

Two Mission 6" x 8" centrifugal Pumps for de-sander and de-siller service.

Brandt Dual tandem Screen high speed shale shaker.

Three derrick FloLine Mud Cleaners.

One Demco Model 123 de-sander with three 12" Cones.

One Demco Model 416-h desilter with sixteen 12" Cones.

One MI SWACO mud cleaner with eight 4" Cones.

One atmospheric-type de-gasser with vent line to top of derrick.

One MI-SWACO vacuum- type de-gasser.

## **MUD PROCESSING**

One re-circulating trip tank – 25 bbls.

Four solids removal tanks – 98 bbls each.

Two active mud tanks and two reserve tanks – 400 bbls each.

One pill tank – 50 bbls.

Dual standpipes and standpipe manifold – (5000 psi WP. Two rotary hoses 3-1/2" ID- 5000 psi WP. Six 1400 cu.ft. horizontal pneumatic-type bulk mud/cement storage tanks (three for mud).

Two low pressure bulk air compressors.

Cementing unit with re-circulating mixer.

This document is the confidential and proprietary property of VIDA BEM LLC. It may contain technical information, service descriptions, and commercial cost estimates pertaining to VIDA BEM products and services that are confidential. No part of this document may be reproduced, transmitted, or used for other than the designated purposes without prior permission of VIDA BEM LLC.

**POWER****GENERATORS**

Four Alco Model 215-V-12 diesel-electric engines of 2,250 hp each.

Four GE GT 608 2,250 hp continuous input DC generators for propulsion and drilling.

Two Caterpillar 3516B diesel engine each driving 1825 KW AC generator.

One Caterpillar D399-TA diesel engine driving one 800 KW AC generator.

One Perkins 4236-56 hp diesel engine driving one 30 kW emergency generator.



This document is the confidential and proprietary property of VIDA BEM LLC. It may contain technical information, service descriptions, and commercial cost estimates pertaining to VIDA BEM products and services that are confidential. No part of this document may be reproduced, transmitted, or used for other than the designated purposes without prior permission of VIDA BEM LLC.

## PROPULSION

Provided by twin propellers with power supplied by two GE GT-608 motors of 2,000 hp (Total 8,000 shaft hp).

## JACKING SYSTEM

Electro- hydraulic jacking system operation two jacking cylinders on each of the four triangular legs providing preload pressure of up psi on each leg. Electrical and hydraulic fail-safe 3600 to

## WEIGHTS JACKED UP

Hull and machinery: 8,323st

Maximum Variable: 2,789s1

Total 11,112st

## JACKING CAPACITY

Total jacking: 3,530t/tower

Dead load holding: 7,200t/tower

Jacking Speed: 60ft/hour

**Locking shims are provided for rig moves.**

## SAFETY SYSTEMS

### ABANDONMENT

Two Watercraft totally enclosed lifeboats for 42 men each (84 men total).

Six life rafts for 25 men each (150 men total).

One rescue boat.

108 personnel survival suits.

This document is the confidential and proprietary property of VIDA BEM LLC. It may contain technical information, service descriptions, and commercial cost estimates pertaining to VIDA BEM products and services that are confidential. No part of this document may be reproduced, transmitted, or used for other than the designated purposes without prior permission of VIDA BEM LLC.

## **H2S DETECTION AND PROTECTION**

15 Sabre 20 min breathing device with spare 20 min cinders. Texas A analytical four-point H2S detection system. Portable H2S detectors and five personal dual H2S detectors.

## **COMMUNICATIONS**

ABS- approved GMDSS radio system.

## **NAVIGATION**

Decca RM 729M radar and 01 satellite navigator.

## **ACCOMMODATION**

Fully air-conditioned for 84 people with conference and office space.

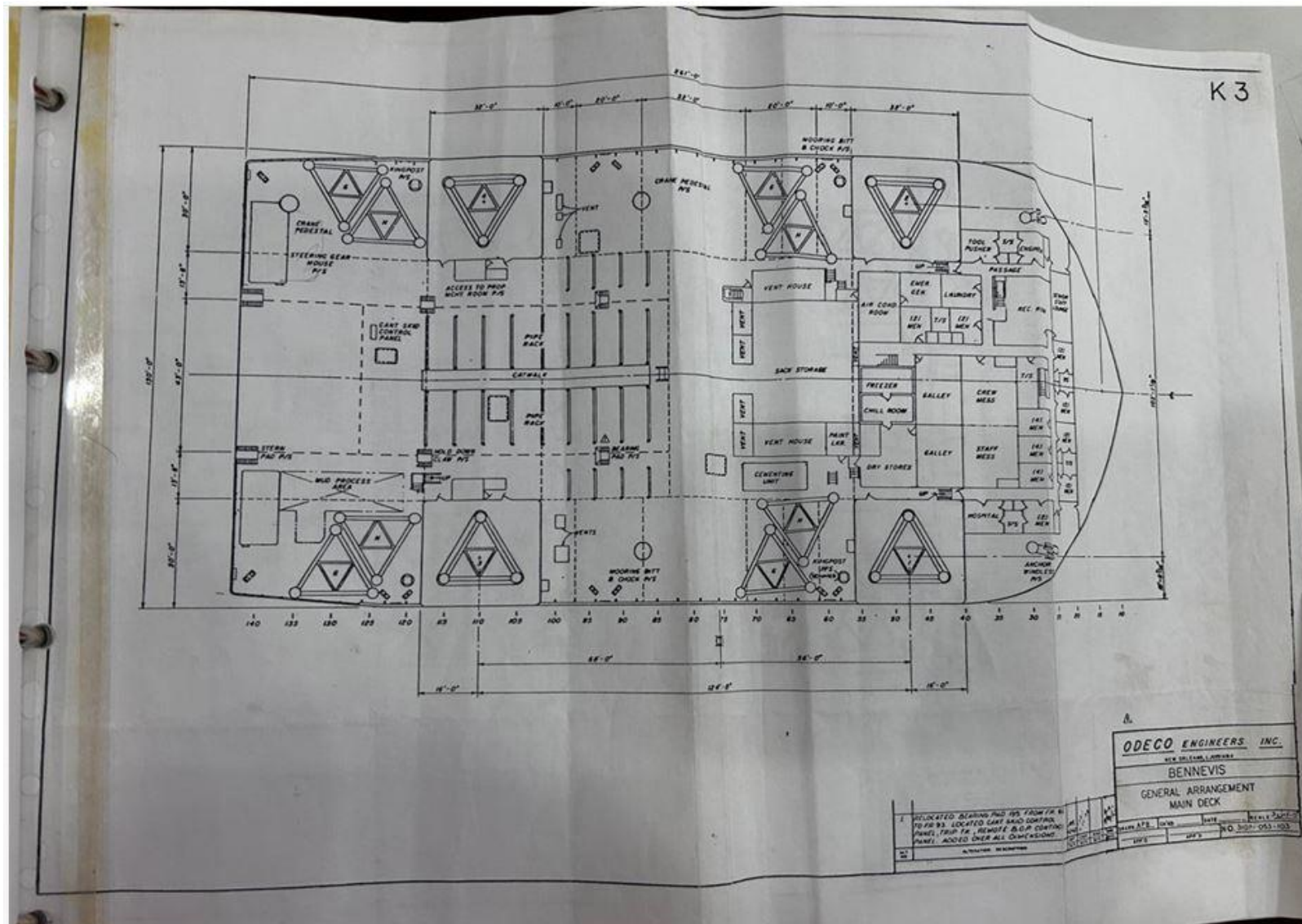


This document is the confidential and proprietary property of VIDA BEM LLC. It may contain technical information, service descriptions, and commercial cost estimates pertaining to VIDA BEM products and services that are confidential. No part of this document may be reproduced, transmitted, or used for other than the designated purposes without prior permission of VIDA BEM LLC.



This document is the confidential and proprietary property of VIDA BEM LLC. It may contain technical information, service descriptions, and commercial cost estimates pertaining to VIDA BEM products and services that are confidential. No part of this document may be reproduced, transmitted, or used for other than the designated purposes without prior permission of VIDA BEM LLC.



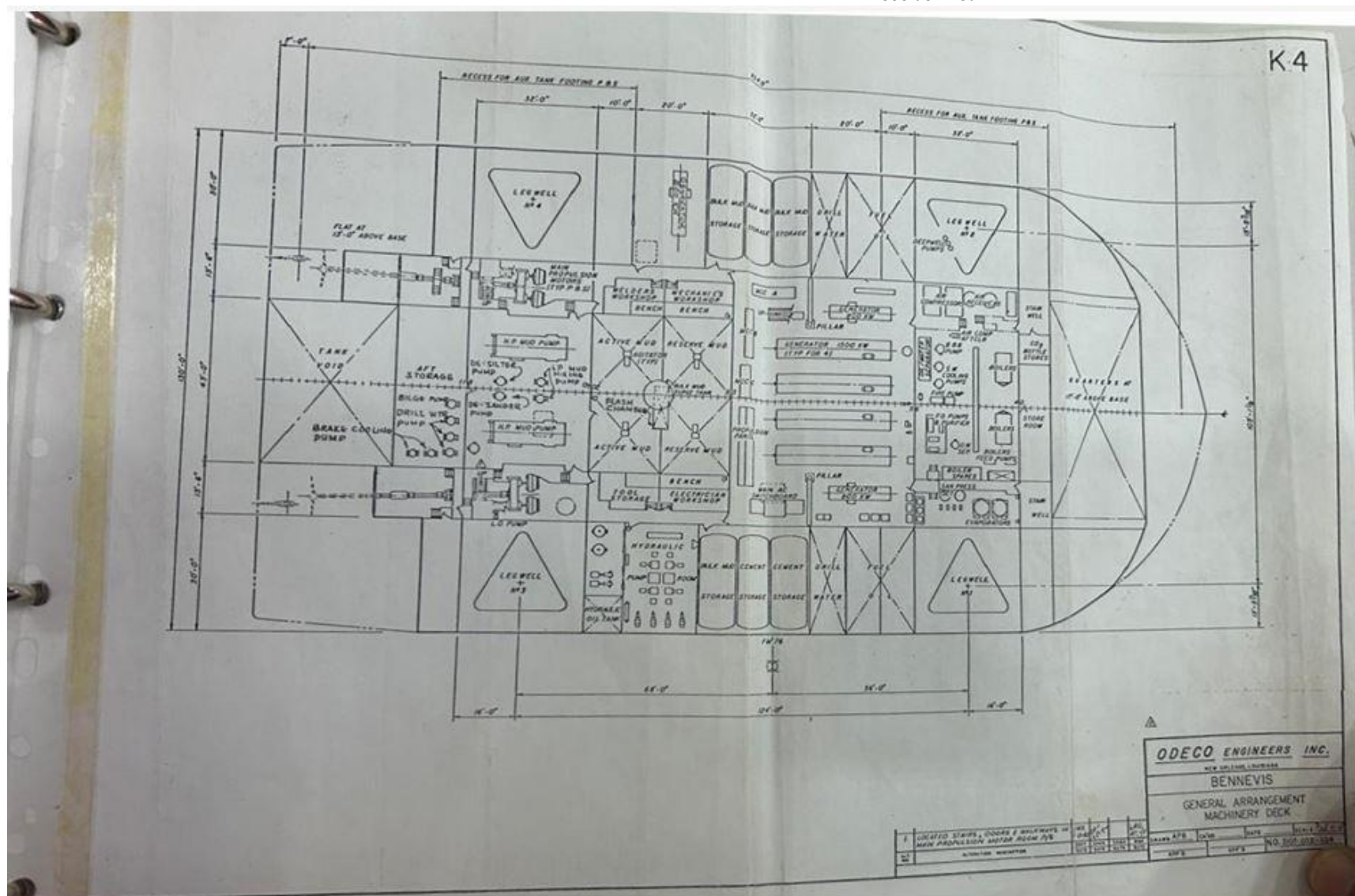


This document is the confidential and proprietary property of VIDA BEM LLC. It may contain technical information, service descriptions, and commercial cost estimates pertaining to VIDA BEM products and services that are confidential. No part of this document may be reproduced, transmitted, or used for other than the designated purposes without prior permission of VIDA BEM LLC.

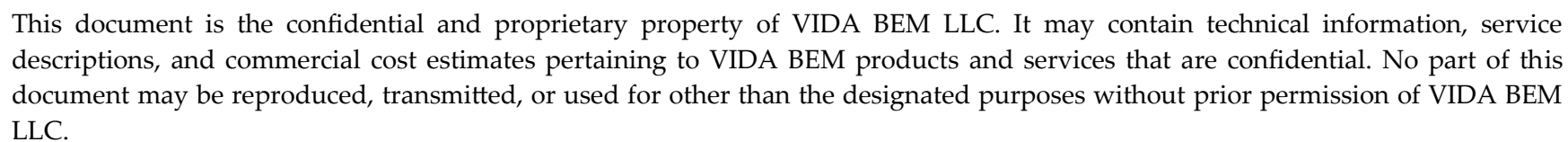


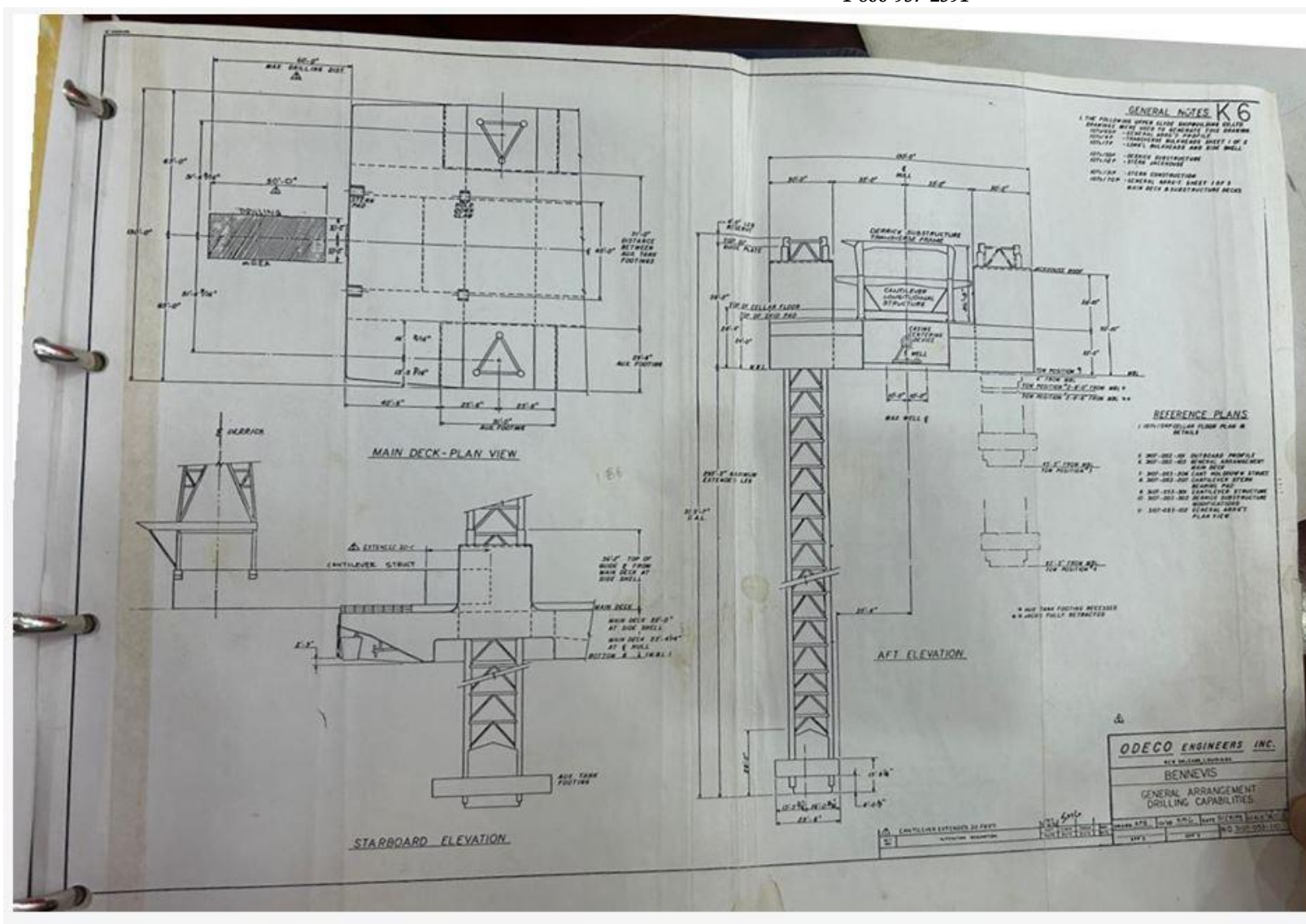
This document is the confidential and proprietary property of VIDA BEM LLC. It may contain technical information, service descriptions, and commercial cost estimates pertaining to VIDA BEM products and services that are confidential. No part of this document may be reproduced, transmitted, or used for other than the designated purposes without prior permission of VIDA BEM LLC.





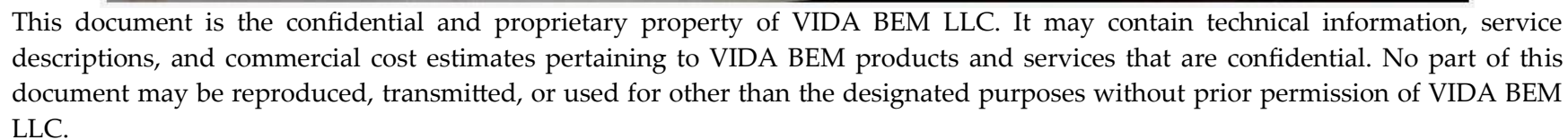
This document is the confidential and proprietary property of VIDA BEM LLC. It may contain technical information, service descriptions, and commercial cost estimates pertaining to VIDA BEM products and services that are confidential. No part of this document may be reproduced, transmitted, or used for other than the designated purposes without prior permission of VIDA BEM LLC.

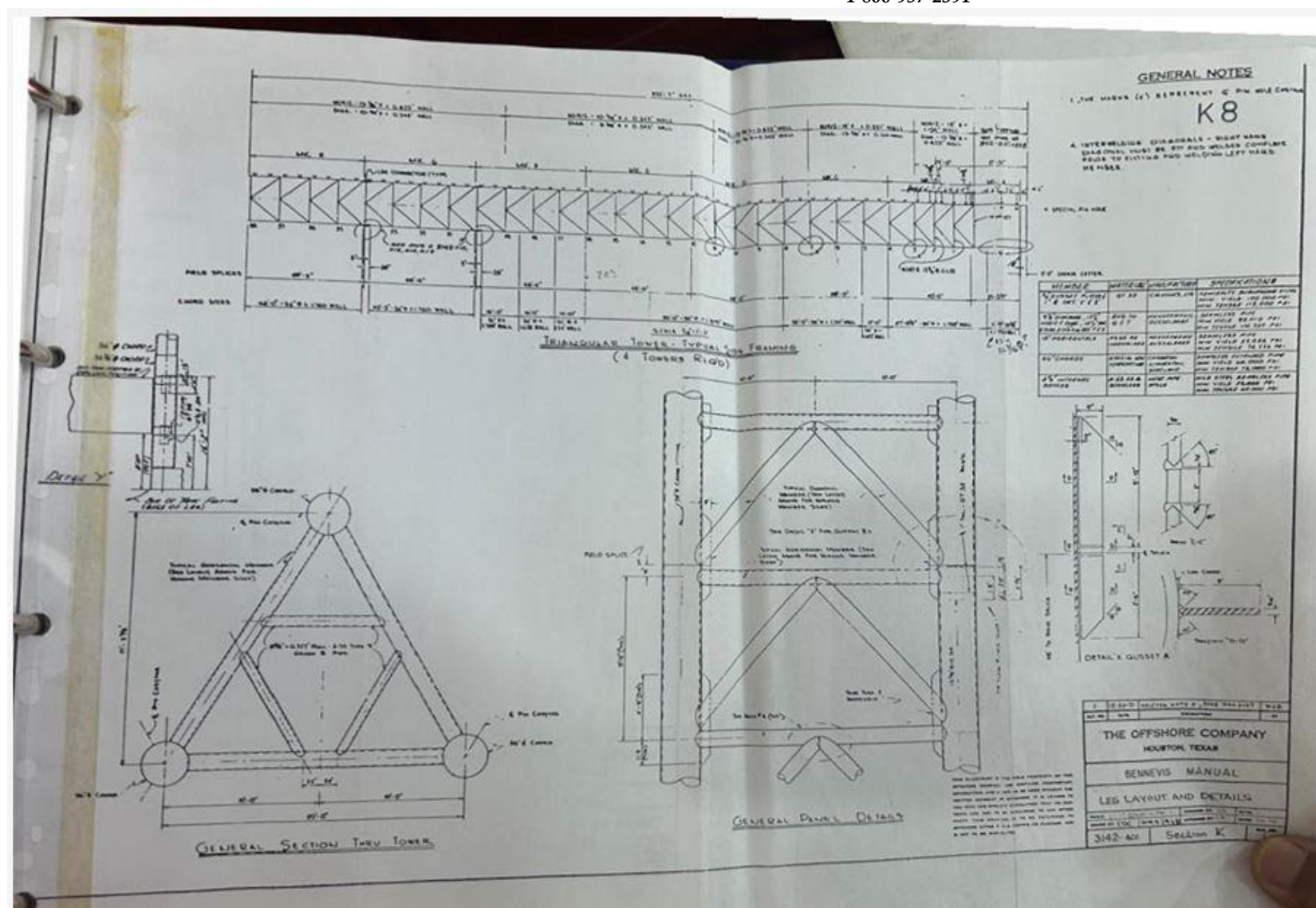




This document is the confidential and proprietary property of VIDA BEM LLC. It may contain technical information, service descriptions, and commercial cost estimates pertaining to VIDA BEM products and services that are confidential. No part of this document may be reproduced, transmitted, or used for other than the designated purposes without prior permission of VIDA BEM LLC.







This document is the confidential and proprietary property of VIDA BEM LLC. It may contain technical information, service descriptions, and commercial cost estimates pertaining to VIDA BEM products and services that are confidential. No part of this document may be reproduced, transmitted, or used for other than the designated purposes without prior permission of VIDA BEM LLC.



B 49

BENNEVIS  
CANTILEVER CONVERSION

TABLE 2 - SUMMARY OF LOADING AND ENVIRONMENTAL CRITERIA, OPERATING \*\*\*

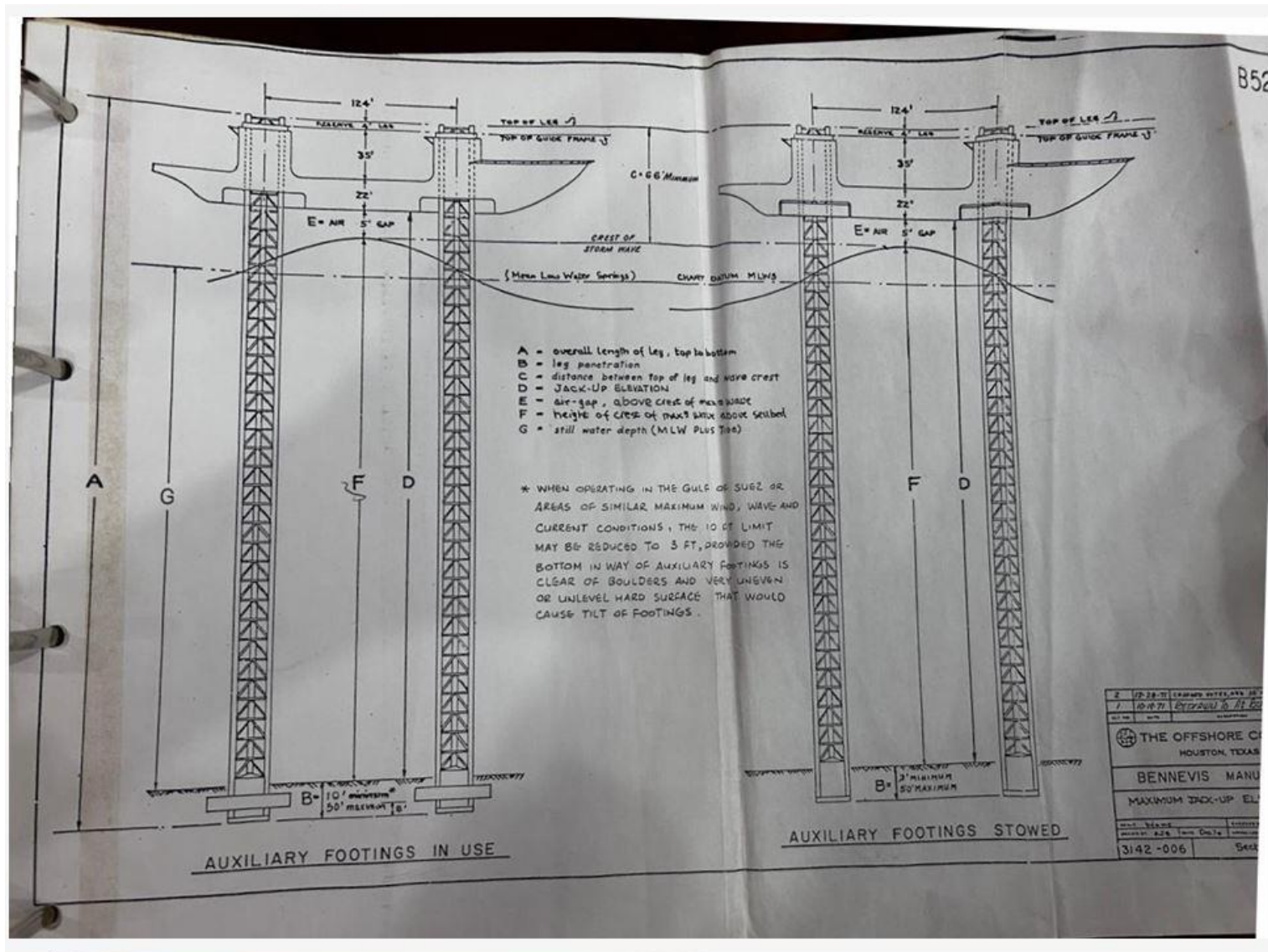
CONDITION (UNITS)	ELEVATED CONDITION LIMITS					
	1	2	3	4	5	6
Water Depth (Ft)	250	220	200	150	125	100
Wave Height (Ft)	30	30	30	30	30	30
Wave Period (Sec)	10	10	10	10	10	10
Soil Penetration (Ft)	7	37	50	50	50	50
Air Gap (Ft)	36	36	37	40	40	45
Wind Speed (Knot)	70	70	70	70	70	70
Current (Knot)	1.5	1.5	1.5	1.5	1.5	1.5
Variable Load* (S. Ton)	1,864	1,864	1,965	2,333	2,425	2,487
Tot. Elev. Load** (S. Ton)	10,255	10,255	10,356	10,724	10,816	10,878
Service Temp. (Deg-Cel)	-10	-10	-10	-10	-10	-10
Leg Length (Ft)	355.58	355.58	355.58	355.58	355.58	355.58

\*Aux. footing attached to leg - If aux. footing is attached to hull, variable load capacity is decreased by 664 S.T.

\*\*Total elevated load only. Does not include weight of legs and aux. footings.

\*\*\* 400 kip substructure load (max) - Note 2 Page 50

This document is the confidential and proprietary property of VIDA BEM LLC. It may contain technical information, service descriptions, and commercial cost estimates pertaining to VIDA BEM products and services that are confidential. No part of this document may be reproduced, transmitted, or used for other than the designated purposes without prior permission of VIDA BEM LLC.



This document is the confidential and proprietary property of VIDA BEM LLC. It may contain technical information, service descriptions, and commercial cost estimates pertaining to VIDA BEM products and services that are confidential. No part of this document may be reproduced, transmitted, or used for other than the designated purposes without prior permission of VIDA BEM LLC.



BENNEVIS

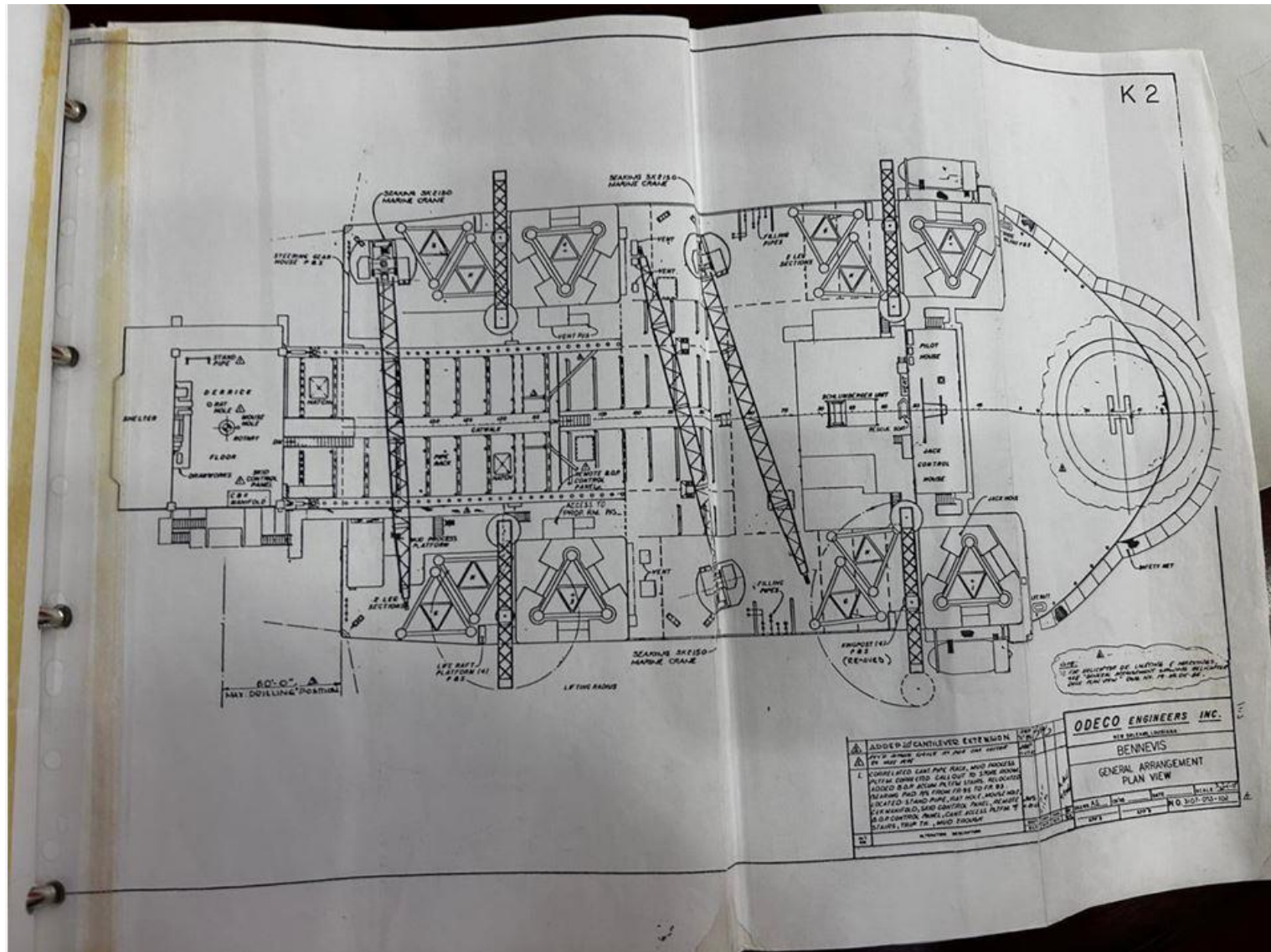
Summary of Field Move Configurations and Limitations

C15

INSTALLED LEG LENGTH	UNDERWAY POSITION	LEG LGTH. BELOW KEEL	TOW POSITION	ALLOWABLE CONDITIONS OF FOOTINGS ON FIELD MOVES		BASIC LEG MOTION GRAPH	SWITCHING OF LOWERING GRAPH	MOTION LIMITS based on 10 sec total period				TRANSITION LIMITS		ACTION TO BE TAKEN IF, WHEN UNDERWAY, IT APPEARS LIKELY THAT MOTION LIMITS WILL BE EXCEEDED FOR ACTUAL CASE	MAXIMUM ACCEPTABLE CONDITIONS	
				AUXILIARY	INTEGRAL			WHILE UNDERWAY		WHEN COMING ON LOCATION		LEG POSITION OR WHEN PULLING LEGS	ROLL OFFICE WITH LEGS IN BOTTOM		WIND	SEA
								FROM BASIC MOTION GRAPH OR LOWERING	FROM BASIC MOTION GRAPH OR LOWERING	FROM BASIC MOTION GRAPH OR LOWERING	FROM BASIC MOTION GRAPH OR LOWERING					
SECTIONS A-F 259'-2"	No 1	0'-6"	NO. 1	NOT NORMALLY AUTHORIZED		A	M	15°					✓ SECURE ALL EQUIPMENT AND DECK OUTFIT FOR STORM CONDITIONS	35	9/10	
	No 2	8'-0"	NO. 2A	PH	E	F		D	11°				SWITCH TO POSITION 3 BEFORE MOTIONS EXCEED 8° OR CHANGE COURSE	37	10/11	
		9'-6"	NO. 2B	PL	F	E		F								
	No 3	45'-5"	NO. 3A	PH	E	F		G	15°				✓ SECURE ALL EQUIPMENT AND DECK OUTFIT FOR STORM CONDITIONS	43	11/12	
SECTIONS A-G 307'-2"	No 1	0'-6"	NO. 1	NOT NORMALLY AUTHORIZED		B	N	7°					SWITCH TO POSITION 3 BEFORE MOTIONS EXCEED 8° OR CHANGE COURSE	27	7/8	
	No 2	8'-0"	NO. 2A	PH	E	F		E	6°				SWITCH TO POSITION 3 BEFORE MOTIONS EXCEED 6° OR CHANGE COURSE	29	8/9	
		9'-6"	NO. 2B	PL	F	E		F								
	No 3	45'-5"	NO. 3A	PH	E	F		H	13°				✓ SECURE ALL EQUIPMENT AND DECK OUTFIT FOR STORM CONDITIONS	35	9/10	
SECTIONS A-H 355'-7"	No 1	0'-6"	NO. 1	NOT NORMALLY AUTHORIZED		C	O	5°					SWITCH TO POSITION 3 BEFORE MOTION EXCEEDS 4°	20'	5/6	
	No 2	8'-0"	NO. 2A	PH	E	F		F	4°				SWITCH TO POSITION 3 BEFORE MOTION EXCEEDS 3°	22'	6/7	
		9'-6"	NO. 2B	PL	E	E										
	No 3	45'-5"	NO. 3A	PH	E	F		I	8°				IF WEATHER CONDITIONS ARE EXPECTED TO PRODUCE LARGER MOTIONS PROCEED TO SHELTERED AREA	28	8	
SECTIONS A-H 355'-7"	No 1	0'-6"	NO. 1	NOT NORMALLY AUTHORIZED		C	O	5°					SWITCH TO POSITION 3 BEFORE MOTION EXCEEDS 4°	20'	5/6	
	No 2	8'-0"	NO. 2A	PH	E	F		F	4°				SWITCH TO POSITION 3 BEFORE MOTION EXCEEDS 3°	22'	6/7	
		9'-6"	NO. 2B	PL	E	E										
	No 3	45'-5"	NO. 3A	PH	E	F		I	8°				IF WEATHER CONDITIONS ARE EXPECTED TO PRODUCE LARGER MOTIONS PROCEED TO SHELTERED AREA	28	8	
SECTIONS A-H 355'-7"	No 1	0'-6"	NO. 1	NOT NORMALLY AUTHORIZED		C	O	5°					SWITCH TO POSITION 3 BEFORE MOTION EXCEEDS 4°	20'	5/6	
	No 2	8'-0"	NO. 2A	PH	E	F		F	4°				SWITCH TO POSITION 3 BEFORE MOTION EXCEEDS 3°	22'	6/7	
		9'-6"	NO. 2B	PL	E	E										
	No 3	45'-5"	NO. 3A	PH	E	F		I	8°				IF WEATHER CONDITIONS ARE EXPECTED TO PRODUCE LARGER MOTIONS PROCEED TO SHELTERED AREA	28	8	
SECTIONS A-H 355'-7"	No 1	0'-6"	NO. 1	NOT NORMALLY AUTHORIZED		C	O	5°					SWITCH TO POSITION 3 BEFORE MOTION EXCEEDS 4°	20'	5/6	
	No 2	8'-0"	NO. 2A	PH	E	F		F	4°				SWITCH TO POSITION 3 BEFORE MOTION EXCEEDS 3°	22'	6/7	
		9'-6"	NO. 2B	PL	E	E										
	No 3	45'-5"	NO. 3A	PH	E	F		I	8°				IF WEATHER CONDITIONS ARE EXPECTED TO PRODUCE LARGER MOTIONS PROCEED TO SHELTERED AREA	28	8	
SECTIONS A-H 355'-7"	No 1	0'-6"	NO. 1	NOT NORMALLY AUTHORIZED		C	O	5°					SWITCH TO POSITION 3 BEFORE MOTION EXCEEDS 4°	20'	5/6	
	No 2	8'-0"	NO. 2A	PH	E	F		F	4°				SWITCH TO POSITION 3 BEFORE MOTION EXCEEDS 3°	22'	6/7	
		9'-6"	NO. 2B	PL	E	E										
	No 3	45'-5"	NO. 3A	PH	E	F		I	8°				IF WEATHER CONDITIONS ARE EXPECTED TO PRODUCE LARGER MOTIONS PROCEED TO SHELTERED AREA	28	8	
SECTIONS A-H 355'-7"	No 1	0'-6"	NO. 1	NOT NORMALLY AUTHORIZED		C	O	5°					SWITCH TO POSITION 3 BEFORE MOTION EXCEEDS 4°	20'	5/6	
	No 2	8'-0"	NO. 2A	PH	E	F		F	4°				SWITCH TO POSITION 3 BEFORE MOTION EXCEEDS 3°	22'	6/7	
		9'-6"	NO. 2B	PL	E	E										
	No 3	45'-5"	NO. 3A	PH	E	F		I	8°				IF WEATHER CONDITIONS ARE EXPECTED TO PRODUCE LARGER MOTIONS PROCEED TO SHELTERED AREA	28	8	
SECTIONS A-H 355'-7"	No 1	0'-6"	NO. 1	NOT NORMALLY AUTHORIZED		C	O	5°					SWITCH TO POSITION 3 BEFORE MOTION EXCEEDS 4°	20'	5/6	
	No 2	8'-0"	NO. 2A	PH	E	F		F	4°				SWITCH TO POSITION 3 BEFORE MOTION EXCEEDS 3°	22'	6/7	
		9'-6"	NO. 2B	PL	E	E										
	No 3	45'-5"	NO. 3A	PH	E	F		I	8°				IF WEATHER CONDITIONS ARE EXPECTED TO PRODUCE LARGER MOTIONS PROCEED TO SHELTERED AREA	28	8	
SECTIONS A-H 355'-7"	No 1	0'-6"	NO. 1	NOT NORMALLY AUTHORIZED		C	O	5°					SWITCH TO POSITION 3 BEFORE MOTION EXCEEDS 4°	20'	5/6	
	No 2	8'-0"	NO. 2A	PH	E	F		F	4°				SWITCH TO POSITION 3 BEFORE MOTION EXCEEDS 3°	22'	6/7	
		9'-6"	NO. 2B	PL	E	E										
	No 3	45'-5"	NO. 3A	PH	E	F		I	8°				IF WEATHER CONDITIONS ARE EXPECTED TO PRODUCE LARGER MOTIONS PROCEED TO SHELTERED AREA	28	8	
SECTIONS A-H 355'-7"	No 1	0'-6"	NO. 1	NOT NORMALLY AUTHORIZED		C	O	5°					SWITCH TO POSITION 3 BEFORE MOTION EXCEEDS 4°	20'	5/6	
	No 2	8'-0"	NO. 2A	PH	E	F		F	4°				SWITCH TO POSITION 3 BEFORE MOTION EXCEEDS 3°	22'	6/7	
		9'-6"	NO. 2B	PL	E	E										
	No 3	45'-5"	NO. 3A	PH	E	F		I	8°				IF WEATHER CONDITIONS ARE EXPECTED TO PRODUCE LARGER MOTIONS PROCEED TO SHELTERED AREA	28	8	
SECTIONS A-H 355'-7"	No 1	0'-6"	NO. 1	NOT NORMALLY AUTHORIZED		C	O	5°					SWITCH TO POSITION 3 BEFORE MOTION EXCEEDS 4°	20'	5/6	
	No 2	8'-0"	NO. 2A	PH	E	F		F	4°				SWITCH TO POSITION 3 BEFORE MOTION EXCEEDS 3°	22'	6/7	
		9'-6"	NO. 2B	PL	E	E										
	No 3	45'-5"	NO. 3A	PH	E	F		I	8°				IF WEATHER CONDITIONS ARE EXPECTED TO PRODUCE LARGER MOTIONS PROCEED TO SHELTERED AREA	28	8	
SECTIONS A-H 355'-7"	No 1	0'-6"	NO. 1	NOT NORMALLY AUTHORIZED		C	O	5°					SWITCH TO POSITION 3 BEFORE MOTION EXCEEDS 4°	20'	5/6	
	No 2	8'-0"	NO. 2A	PH	E	F		F	4°				SWITCH TO POSITION 3 BEFORE MOTION EXCEEDS 3°	22'	6/7	
		9'-6"	NO. 2B	PL	E	E										
	No 3	45'-5"	NO. 3A	PH	E	F		I	8°				IF WEATHER CONDITIONS ARE EXPECTED TO PRODUCE LARGER MOTIONS PROCEED TO SHELTERED AREA	28	8	
SECTIONS A-H 355'-7"	No 1	0'-6"	NO. 1	NOT NORMALLY AUTHORIZED		C	O	5°					SWITCH TO POSITION 3 BEFORE MOTION EXCEEDS 4°	20'	5/6	
	No 2	8'-0"	NO. 2A	PH	E	F		F	4°				SWITCH TO POSITION 3 BEFORE MOTION EXCEEDS 3°	22'	6/7	
		9'-6"	NO. 2B	PL	E	E										
	No 3	45'-5"	NO. 3A	PH	E	F		I	8°				IF WEATHER CONDITIONS ARE EXPECTED TO PRODUCE LARGER MOTIONS PROCEED TO SHELTERED AREA	28	8	
SECTIONS A-H 355'-7"	No 1	0'-6"	NO. 1	NOT NORMALLY AUTHORIZED		C	O	5°					SWITCH TO POSITION 3 BEFORE MOTION EXCEEDS 4°	20'	5/6	
	No 2	8'-0"	NO. 2A	PH	E	F		F	4°				SWITCH TO POSITION 3 BEFORE MOTION EXCEEDS 3°	22'	6/7	
		9'-6"	NO. 2B	PL	E	E										
	No 3	45'-5"	NO. 3A	PH	E	F		I	8°				IF WEATHER CONDITIONS ARE EXPECTED TO PRODUCE LARGER MOTIONS PROCEED TO SHELTERED AREA	28	8	
SECTIONS A-H 355'-7"	No 1	0'-6"	NO. 1	NOT NORMALLY AUTHORIZED		C	O	5°					SWITCH TO POSITION 3 BEFORE MOTION EXCEEDS 4°	20'	5/6	
	No 2	8'-0"	NO. 2A	PH	E	F		F	4°				SWITCH TO POSITION 3 BEFORE MOTION EXCEEDS 3°	22'	6/7	
		9'-6"	NO. 2B	PL	E	E										
	No 3	45'-5"	NO. 3A	PH	E	F		I	8°				IF WEATHER CONDITIONS ARE EXPECTED TO PRODUCE LARGER MOTIONS PROCEED TO SHELTERED AREA	28	8	
SECTIONS A-H 355'-7"	No 1	0'-6"	NO. 1	NOT NORMALLY AUTHORIZED		C	O	5°					SWITCH TO POSITION 3 BEFORE MOTION EXCEEDS 4°	20'	5/6	
	No 2	8'-0"	NO. 2A	PH	E	F		F	4°				SWITCH TO POSITION 3 BEFORE MOTION EXCEEDS 3°	22'	6/7	
		9'-6"	NO. 2B	PL	E	E										
	No 3	45'-5"	NO. 3A	PH	E	F		I	8°				IF WEATHER CONDITIONS ARE EXPECTED TO PRODUCE LARGER MOTIONS PROCEED TO SHELTERED AREA	28	8	
SECTIONS A-H 355'-7"	No 1	0'-6"	NO. 1	NOT NORMALLY AUTHORIZED		C	O	5°					SWITCH TO POSITION 3 BEFORE MOTION EXCEEDS 4°	20'	5/6	
	No 2	8'-0"	NO. 2A	PH	E	F		F	4°				SWITCH TO POSITION 3 BEFORE MOTION EXCEEDS 3°	22'	6/7	
		9'-6"	NO. 2B	PL	E	E										
	No 3	45'-5"	NO. 3A	PH	E	F		I	8°				IF WEATHER CONDITIONS ARE EXPECTED TO PRODUCE LARGER MOTIONS PROCEED TO SHELTERED AREA	28	8	
SECTIONS A-H 355'-7"	No 1	0'-6"	NO. 1	NOT NORMALLY AUTHORIZED		C	O	5°					SWITCH TO POSITION 3 BEFORE MOTION EXCEEDS 4°	20'	5/6	
	No 2	8'-0"	NO. 2A	PH	E	F		F	4°				SWITCH TO POSITION 3 BEFORE MOTION EXCEEDS 3°	22'	6/7	
		9'-6"	NO. 2B	PL	E	E										
	No 3	45'-5"	NO. 3A	PH	E	F		I	8°				IF WEATHER CONDITIONS ARE EXPECTED TO PRODUCE LARGER MOTIONS PROCEED TO SHELTERED AREA	28	8	
SECTIONS A-H 355'-7"	No 1	0'-6"	NO. 1	NOT NORMALLY AUTHORIZED		C	O	5°					SWITCH TO POSITION 3 BEFORE MOTION EXCEEDS 4°	20'	5/6	
	No 2	8'-0"	NO. 2A	PH	E	F		F	4°				SWITCH TO POSITION 3 BEFORE MOTION EXCEEDS 3°	22'	6/7	
		9'-6"	NO. 2B	PL	E	E										
	No 3	45'-5"	NO. 3A	PH	E	F		I	8°				IF WEATHER CONDITIONS ARE EXPECTED TO PRODUCE LARGER MOTIONS PROCEED TO SHELTERED AREA	28	8	
SECTIONS A-H 355'-7"	No 1	0'-6"	NO. 1	NOT NORMALLY AUTHORIZED		C	O	5°					SWITCH TO POSITION 3 BEFORE MOTION EXCEEDS 4°	20'	5/6	
	No 2	8'-0"	NO. 2A	PH	E	F		F	4°				SWITCH TO POSITION 3 BEFORE MOTION EXCEEDS 3°	22'	6/7	
		9'-6"	NO. 2B	PL	E	E										
	No 3	45'-5"	NO. 3A	PH	E	F		I	8°				IF WEATHER CONDITIONS ARE EXPECTED TO PRODUCE LARGER MOTIONS PROCEED TO SHELTERED AREA	28	8	
SECTIONS A-H 355'-7"	No 1	0'-6"	NO. 1	NOT NORMALLY AUTHORIZED		C	O	5°					SWITCH TO POSITION 3 BEFORE MOTION EXCEEDS 4°	20'	5/6	
	No 2	8'-0"	NO. 2A	PH	E	F		F	4°				SWITCH TO POSITION 3 BEFORE MOTION EXCEEDS 3°	22'	6/7	
		9'-6"	NO. 2B	PL	E	E										
	No 3	45'-5"	NO. 3A	PH	E	F		I	8°				IF WEATHER CONDITIONS ARE EXPECTED TO PRODUCE LARGER MOTIONS PROCEED TO SHELTERED AREA	28	8	
SECTIONS A-H 355'-7"	No 1	0'-6"	NO. 1	NOT NORMALLY AUTHORIZED		C	O	5°					SWITCH TO POSITION 3 BEFORE MOTION EXCEEDS 4°	20'	5/6	
	No 2	8'-0"	NO. 2A	PH	E	F		F	4°				SWITCH TO POSITION 3 BEFORE MOTION EXCEEDS 3°	22'	6/7	
		9'-6"	NO. 2B	PL	E	E										
	No 3	45'-5"	NO. 3A	PH	E	F		I	8°				IF WEATHER CONDITIONS ARE EXPECTED TO PRODUCE LARGER MOTIONS PROCEED TO SHELTERED AREA	28	8	
SECTIONS A-H 355'-7"	No 1	0'-6"	NO. 1	NOT NORMALLY AUTHORIZED		C	O	5°					SWITCH TO POSITION 3 BEFORE MOTION EXCEEDS 4°	20'	5/6	
	No 2	8'-0"	NO. 2A	PH	E	F		F	4°				SWITCH TO POSITION 3 BEFORE MOTION EXCEEDS 3°	22'	6/7	
		9'-6"	NO. 2B	PL	E	E										
	No 3	45'-5"	NO. 3A	PH	E	F		I	8°				IF WEATHER CONDITIONS ARE EXPECTED TO PRODUCE LARGER MOTIONS PROCEED TO SHELTERED AREA	28	8	
SECTIONS A-H 355'-7"	No 1	0'-6"	NO. 1	NOT NORMALLY AUTHORIZED		C	O	5°					SWITCH TO POSITION 3 BEFORE MOTION EXCEEDS 4°	20'	5/6	
	No 2	8'-0"	NO. 2A	PH	E	F		F	4°				SWITCH TO POSITION 3 BEFORE MOTION EXCEEDS 3°	22'	6/7	
		9'-6"	NO. 2B	PL	E	E										
	No 3	45'-5"	NO. 3A	PH	E	F		I	8°				IF WEATHER CONDITIONS ARE EXPECTED TO PRODUCE LARGER MOTIONS PROCEED TO SHELTERED AREA	28	8	
SECTIONS A-H 355'-7"	No 1	0'-6"	NO. 1	NOT NORMALLY AUTHORIZED		C	O	5°					SWITCH TO POSITION 3 BEFORE MOTION EXCEEDS 4°	20'	5/6	
	No 2	8'-0"	NO. 2A	PH	E	F		F	4°				SWITCH TO POSITION 3 BEFORE MOTION EXCEEDS 3°	22'	6/7	
		9'-6"	NO. 2B	PL	E	E										
	No 3	45'-5"	NO. 3A	PH	E	F		I	8°				IF WEATHER CONDITIONS ARE EXPECTED TO PRODUCE LARGER MOTIONS PROCEED TO SHELTERED AREA	28	8	
SECTIONS A-H 355'-7"	No 1	0'-6"	NO. 1	NOT NORMALLY AUTHORIZED		C	O	5°					SWITCH TO POSITION 3 BEFORE MOTION EXCEEDS 4°	20'	5/6	
	No 2	8'-0"	NO. 2A	PH	E	F		F	4°				SWITCH TO POSITION 3 BEFORE MOTION EXCEEDS 3°	22'	6/7	
		9'-6"	NO. 2B	PL	E	E										
	No 3	45'-5"	NO. 3A	PH	E	F		I	8°							

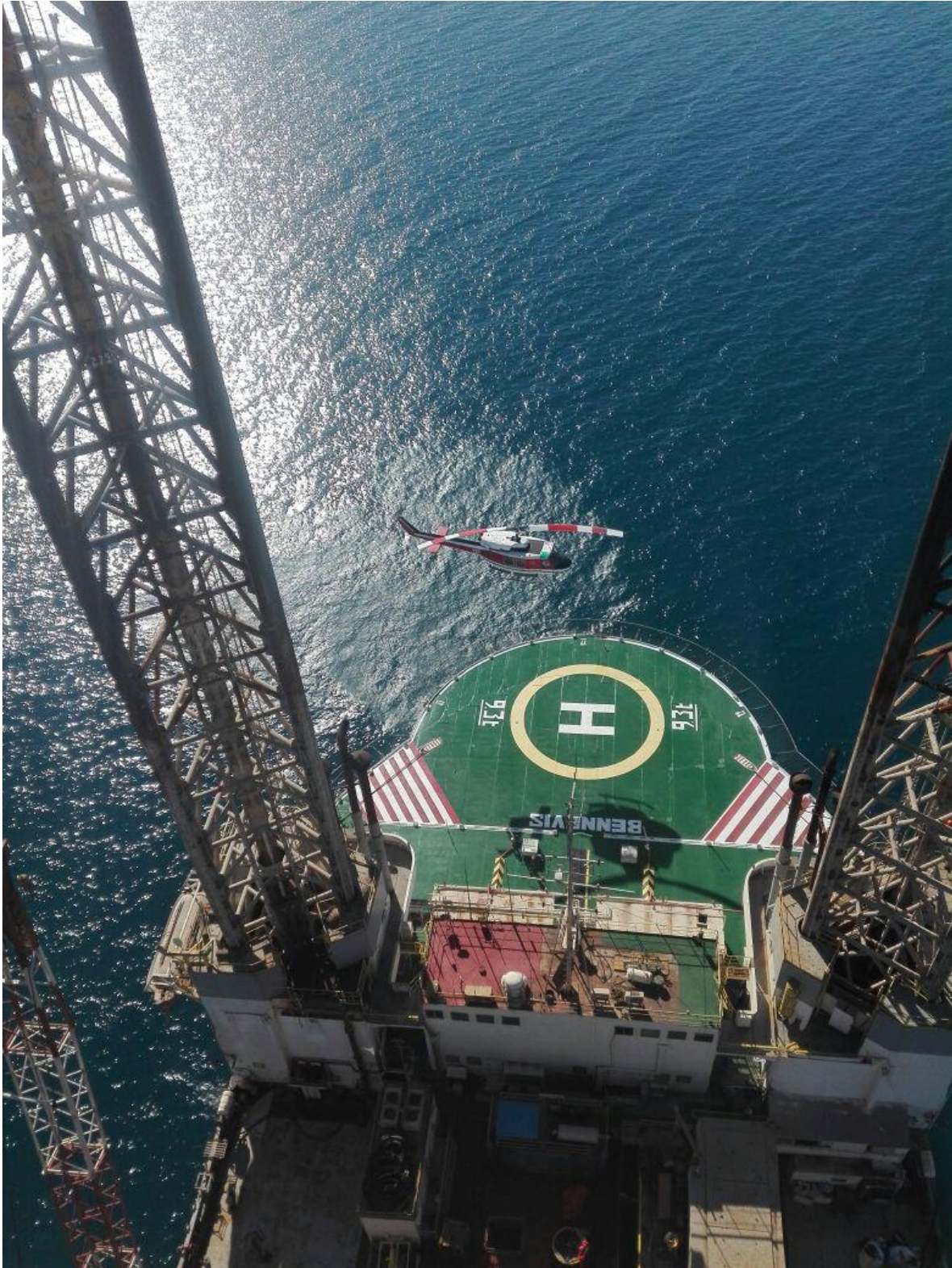
This document is the confidential and proprietary property of VIDA BEM LLC. It may contain technical information, service descriptions, and commercial cost estimates pertaining to VIDA BEM products and services that are confidential. No part of this document may be reproduced, transmitted, or used for other than the designated purposes without prior permission of VIDA BEM LLC.





This document is the confidential and proprietary property of VIDA BEM LLC. It may contain technical information, service descriptions, and commercial cost estimates pertaining to VIDA BEM products and services that are confidential. No part of this document may be reproduced, transmitted, or used for other than the designated purposes without prior permission of VIDA BEM LLC.





This document is the confidential and proprietary property of VIDA BEM LLC. It may contain technical information, service descriptions, and commercial cost estimates pertaining to VIDA BEM products and services that are confidential. No part of this document may be reproduced, transmitted, or used for other than the designated purposes without prior permission of VIDA BEM LLC.





This document is the confidential and proprietary property of VIDA BEM LLC. It may contain technical information, service descriptions, and commercial cost estimates pertaining to VIDA BEM products and services that are confidential. No part of this document may be reproduced, transmitted, or used for other than the designated purposes without prior permission of VIDA BEM LLC.



This document is the confidential and proprietary property of VIDA BEM LLC. It may contain technical information, service descriptions, and commercial cost estimates pertaining to VIDA BEM products and services that are confidential. No part of this document may be reproduced, transmitted, or used for other than the designated purposes without prior permission of VIDA BEM LLC.





This document is the confidential and proprietary property of VIDA BEM LLC. It may contain technical information, service descriptions, and commercial cost estimates pertaining to VIDA BEM products and services that are confidential. No part of this document may be reproduced, transmitted, or used for other than the designated purposes without prior permission of VIDA BEM LLC.



This document is the confidential and proprietary property of VIDA BEM LLC. It may contain technical information, service descriptions, and commercial cost estimates pertaining to VIDA BEM products and services that are confidential. No part of this document may be reproduced, transmitted, or used for other than the designated purposes without prior permission of VIDA BEM LLC.





This document is the confidential and proprietary property of VIDA BEM LLC. It may contain technical information, service descriptions, and commercial cost estimates pertaining to VIDA BEM products and services that are confidential. No part of this document may be reproduced, transmitted, or used for other than the designated purposes without prior permission of VIDA BEM LLC.



This document is the confidential and proprietary property of VIDA BEM LLC. It may contain technical information, service descriptions, and commercial cost estimates pertaining to VIDA BEM products and services that are confidential. No part of this document may be reproduced, transmitted, or used for other than the designated purposes without prior permission of VIDA BEM LLC.





VIDA BEM

This document is the confidential and proprietary property of VIDA BEM LLC. It may contain technical information, service descriptions, and commercial cost estimates pertaining to VIDA BEM products and services that are confidential. No part of this document may be reproduced, transmitted, or used for other than the designated purposes without prior permission of VIDA BEM LLC.



1-800-957-2391

**To Schedule an Inspection Please Contact:**

Jose Lozano

Founder

VIDA BEM LLC

Office: 800 957 2391

Cell: 661 303 3190 (What's APP)

Email: [jlozano@vidabem.us](mailto:jlozano@vidabem.us)

Visit Us: [www.vidaeq.com](http://www.vidaeq.com)

**Subject to prior sale and or other disposition.**

Purchasing Party is responsible for verifying accuracy of information provided. All Items to be quoted in US currency. All prices and availability are subject to change without notice and are subject to applicable sales tax. Title to all goods listed remain with the seller until the purchase price is fully paid. Equipment is purchased as is, where is, without warranty unless otherwise specified. Use hours are estimate hours as of the date of this posting and are not guaranteed. Equipment pictured may contain attachments and/or accessories not priced in this offer. Sale subject to terms and conditions on final bill of sale.

This document is the confidential and proprietary property of VIDA BEM LLC. It may contain technical information, service descriptions, and commercial cost estimates pertaining to VIDA BEM products and services that are confidential. No part of this document may be reproduced, transmitted, or used for other than the designated purposes without prior permission of VIDA BEM LLC.