

VIDA BEM

2000 HP Slot Type

Marathon LeTourneau Class 84

Jack Up

This document is the confidential and proprietary property of VIDA BEM LLC. It may contain technical information, service descriptions, and commercial cost estimates pertaining to VIDA BEM products and services that are confidential. No part of this document may be reproduced, transmitted, or used for other than the designated purposes without prior permission of VIDA BEM LLC.

Disclaimer / Confidentiality Statement

This document is strictly private and confidential, and is being submitted for the sole purpose of responding to an expression of interest related to the sale of rig equipment being offered by VIDA BEM, LLC. This document contains information that is proprietary and confidential ("Confidential Information") and is being provided for the sole purpose of evaluating this equipment package. Confidential Information includes information relating to the goods, equipment, and/ or services referred to in the proposal, but is not limited to, specifications, designs, drawings, product data, manufacturing processes, installation methods, price lists, technical information, visually transmitted information, trade secrets, software, firmware, and other confidential or proprietary information forming part of this document.

By continuing past this notice to review you agree to keep this information confidential and agree to limit disclosure of the information to only those authorized employees and representatives who need to know the information in order to evaluate this equipment package.

In addition, you agree not to; (i) disclose the information contained in this document to any third parties; (ii) use the information for any purpose other than to evaluate the equipment acquisition; (iii) use the information in any other way that might be prejudicial or detrimental to VIDA BEM, LLC and (iv) copy, distribute or reproduce the contents of the proposal information in whole or part.

In the event this equipment package is not considered any further and / or your client is not considered for the award letter, you agree to destroy this document in digital and hard copy forms, and all complete or partial replications or excerpts taken from it, or to return the same to VIDA BEM, LLC.

The equipment owner owns its patents, copyrights, commercial secrets, technology, knowledge, information of any nature ("Intellectual Property"), revealed in connection with the subject matter of this proposal and nothing contained in the same shall be considered as an authorization or transference or license or property rights or rights of any nature of a party towards the other in any matter related with Intellectual Property.

All operating and controls systems mentioned in this document are used for identification purposes only and may be trademarks of their respective owners.

This equipment package is subject to a mutually agreed definitive agreement between our companies, and while the intent is to eventually negotiate and execute the same at a later date, it is expressly understood that this is an equipment description document only and no liability or obligation of any nature whatsoever is intended to be created hereunder.

This document is the confidential and proprietary property of VIDA BEM LLC. It may contain technical information, service descriptions, and commercial cost estimates pertaining to VIDA BEM products and services that are confidential. No part of this document may be reproduced, transmitted, or used for other than the designated purposes without prior permission of VIDA BEM LLC.

This document is the confidential and proprietary property of VIDA BEM LLC. It may contain technical information, service descriptions, and commercial cost estimates pertaining to VIDA BEM products and services that are confidential. No part of this document may be reproduced, transmitted, or used for other than the designated purposes without prior permission of VIDA BEM LLC.

HISTORY

YEAR OF CONSTRUCTION: 1976

REFURBISHED AND UPGRADED: 2018

During its 2018 overhaul, drilling equipment and safety system were upgraded. Navigation systems, GMDSS and solids control equipment are new installed. Additionally, a completely new electrical high pressure cementing unit (with capacity to pump at 14 BPM and density range up to 22 ppg) was installed.

LAST INSPECTION (ABS) January 2019

Flag: Liberian

Design: Marathon LeTourneau Class 84 Jack Up

Builder: Marathon LeTourneau, Shipyard Vicksburg, Mississippi, USA

Status: Expired 2024, ABS Class Certification

ABS Class Notations: A1, Mobile Offshore Drilling Unit (MODU)

Proof of Funds must be presented prior to scheduling an inspection

Inspection at buyer expense.

Subject to prior sale and or other disposition.

Purchasing Party is responsible for verifying accuracy of information provided. All Items to be quoted in US currency. All prices and availability are subject to change without notice and are subject to applicable sales tax. Title to all goods listed remain with the seller until the purchase price is fully paid. Equipment is purchased as is, where is, without warranty unless otherwise specified. Use hours are estimate hours as of the date of this posting and are not guaranteed. Equipment pictured may contain attachments and/or accessories not priced in this offer. Sale subject to terms and conditions on final bill of sale.

This document is the confidential and proprietary property of VIDA BEM LLC. It may contain technical information, service descriptions, and commercial cost estimates pertaining to VIDA BEM products and services that are confidential. No part of this document may be reproduced, transmitted, or used for other than the designated purposes without prior permission of VIDA BEM LLC.

SHIP INFO

IMO number	8753639
MMSI	636012811
Name of the ship	ATLANTIC 7
Former names	ENSCO 69 (2016) PENROD 69 (1993)
Vessel type	Jackup platform
Operating status	Laid up
Flag	Liberia
Gross tonnage	5,336 tons
Length	75 m
Breadth	61 m
Year of build	1976
Builder	LETOURNEAU TECHNOLOGIES - VICKSBURG MS, U.S.A.
Home port	MONROVIA
Description	ATLANTIC 7 is a Jackup platform built in 1976 by LETOURNEAU TECHNOLOGIES - VICKSBURG MS, U.S.A.. Current status: Laid up. Formerly also known as ENSCO 69, PENROD 69. It's gross tonnage is 5336 tons.

This document is the confidential and proprietary property of VIDA BEM LLC. It may contain technical information, service descriptions, and commercial cost estimates pertaining to VIDA BEM products and services that are confidential. No part of this document may be reproduced, transmitted, or used for other than the designated purposes without prior permission of VIDA BEM LLC.

TECHNICAL SPECIFICATIONS

MAIN DIMENSIONS

Length: 247'- 7"; **Breadth:** 227'-5"; **Depth:** 26'

Legs: 3 X 410' Square Truss

Leg Spacing: Longitudinal leg centers 129', transverse leg centers 142'

Spud cans: 46' diameter X 24' high

Slot dimensions: 41' X 50'

Helideck: S-61; Diameter 70'

OPERATIONAL PARAMETERS

Water Depth: 300' (17' – 300')

Maximum Drilling Depth: 20,000' with 5" D.P.

Available length below hull including 5' margin Air Gap: 80'

Transit Speed: 5 knots

Survival Conditions-Criteria Design: 100 Knots; waves period: 13 sec; wave height: 44ft

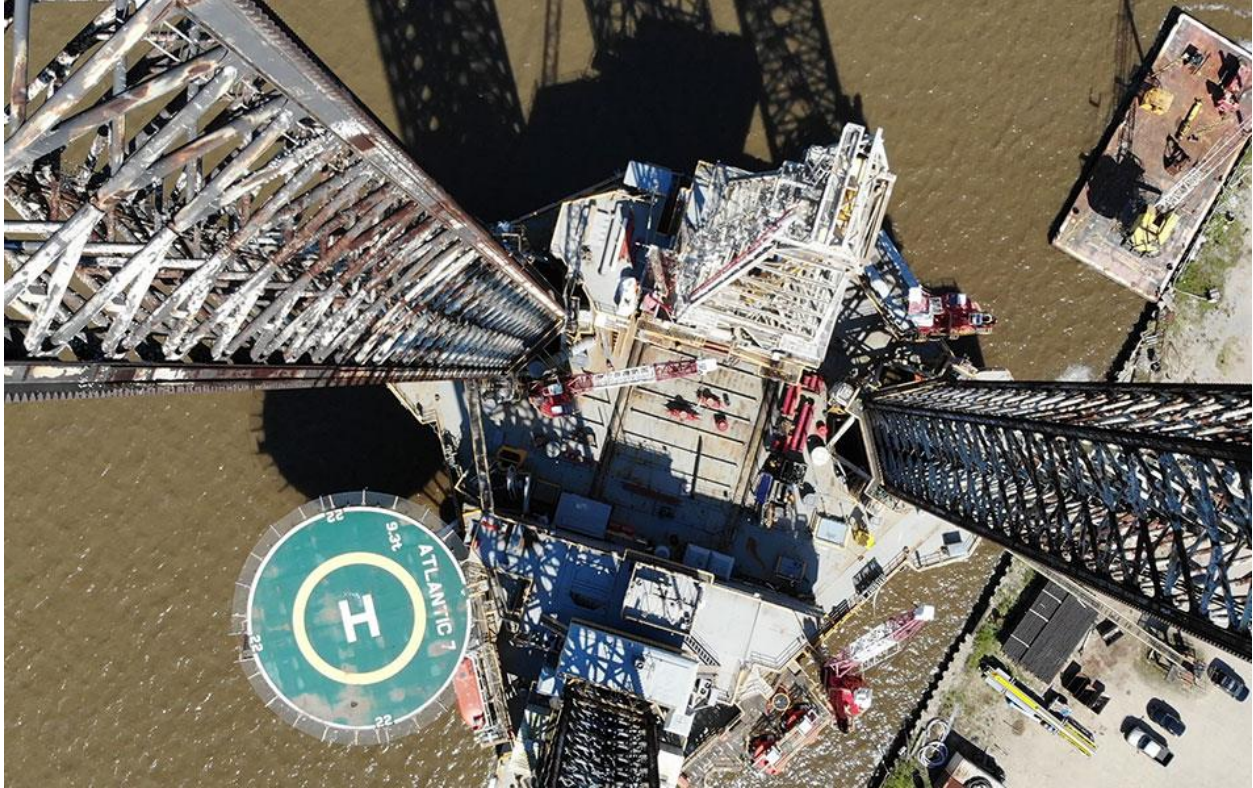
Jacking and skidding system: Marathon LeTourneau AC electric rack and pinion. 90 ft/hr

This document is the confidential and proprietary property of VIDA BEM LLC. It may contain technical information, service descriptions, and commercial cost estimates pertaining to VIDA BEM products and services that are confidential. No part of this document may be reproduced, transmitted, or used for other than the designated purposes without prior permission of VIDA BEM LLC.

DRILLING EQUIPMENT

DERRICK

DRECO 170 ft x 30 ft x 30 ft x 1,500,000 lbs.



Cantilever Load: 1,310,000 lbs.

This document is the confidential and proprietary property of VIDA BEM LLC. It may contain technical information, service descriptions, and commercial cost estimates pertaining to VIDA BEM products and services that are confidential. No part of this document may be reproduced, transmitted, or used for other than the designated purposes without prior permission of VIDA BEM LLC.

DRAWWORKS

1320 x UE 2000HP National Oilwell; wire 1 ½". Electric brake: model 7838 Baylor



VIDA BEM

This document is the confidential and proprietary property of VIDA BEM LLC. It may contain technical information, service descriptions, and commercial cost estimates pertaining to VIDA BEM products and services that are confidential. No part of this document may be reproduced, transmitted, or used for other than the designated purposes without prior permission of VIDA BEM LLC.

ROTORY TABLE

Model C-375 National Oilwell 37 ½", driven by 1 D79 EMD motor



VIDA BEM

This document is the confidential and proprietary property of VIDA BEM LLC. It may contain technical information, service descriptions, and commercial cost estimates pertaining to VIDA BEM products and services that are confidential. No part of this document may be reproduced, transmitted, or used for other than the designated purposes without prior permission of VIDA BEM LLC.

TOP DRIVE

Model TDS-4H Varco BJ 650 TON, with Pipe Handler model PH-85



This document is the confidential and proprietary property of VIDA BEM LLC. It may contain technical information, service descriptions, and commercial cost estimates pertaining to VIDA BEM products and services that are confidential. No part of this document may be reproduced, transmitted, or used for other than the designated purposes without prior permission of VIDA BEM LLC.

TRAVELING BLOCK

Continental Em 760H 650 TON



Crown Block: National OilWell 760FA

VIDA BEM

This document is the confidential and proprietary property of VIDA BEM LLC. It may contain technical information, service descriptions, and commercial cost estimates pertaining to VIDA BEM products and services that are confidential. No part of this document may be reproduced, transmitted, or used for other than the designated purposes without prior permission of VIDA BEM LLC.

MUD PUMPS

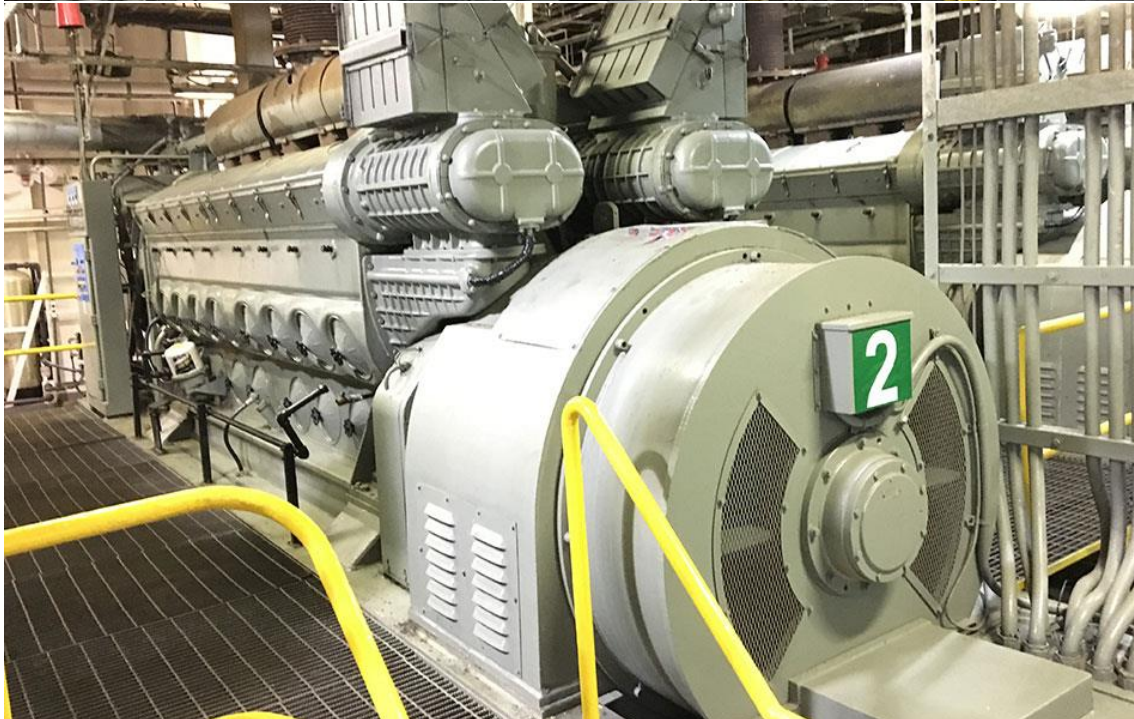
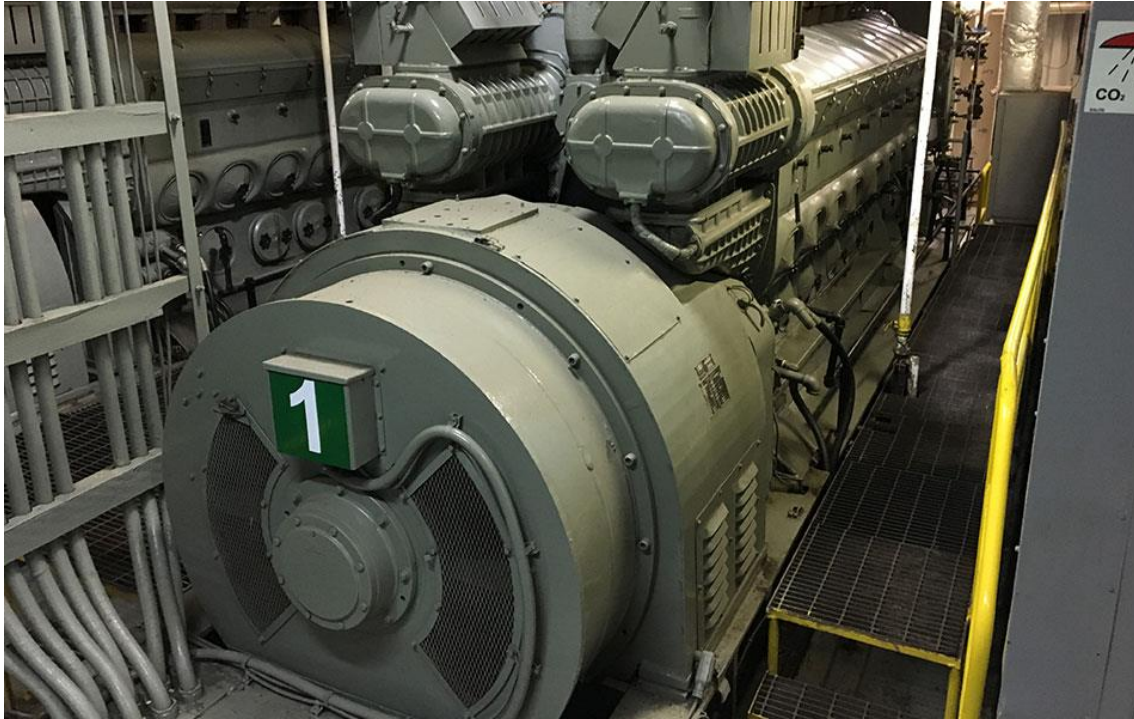
2 National Oilwell modelo 12-P-160 Triplex - 5000 psi. Stand pipe 5 in x 5000 psi



This document is the confidential and proprietary property of VIDA BEM LLC. It may contain technical information, service descriptions, and commercial cost estimates pertaining to VIDA BEM products and services that are confidential. No part of this document may be reproduced, transmitted, or used for other than the designated purposes without prior permission of VIDA BEM LLC.

MAIN POWER

3 EMD 16-645-E8 Engines 6600 HP, generators AB20-N6 x 1,575 kW 600 V



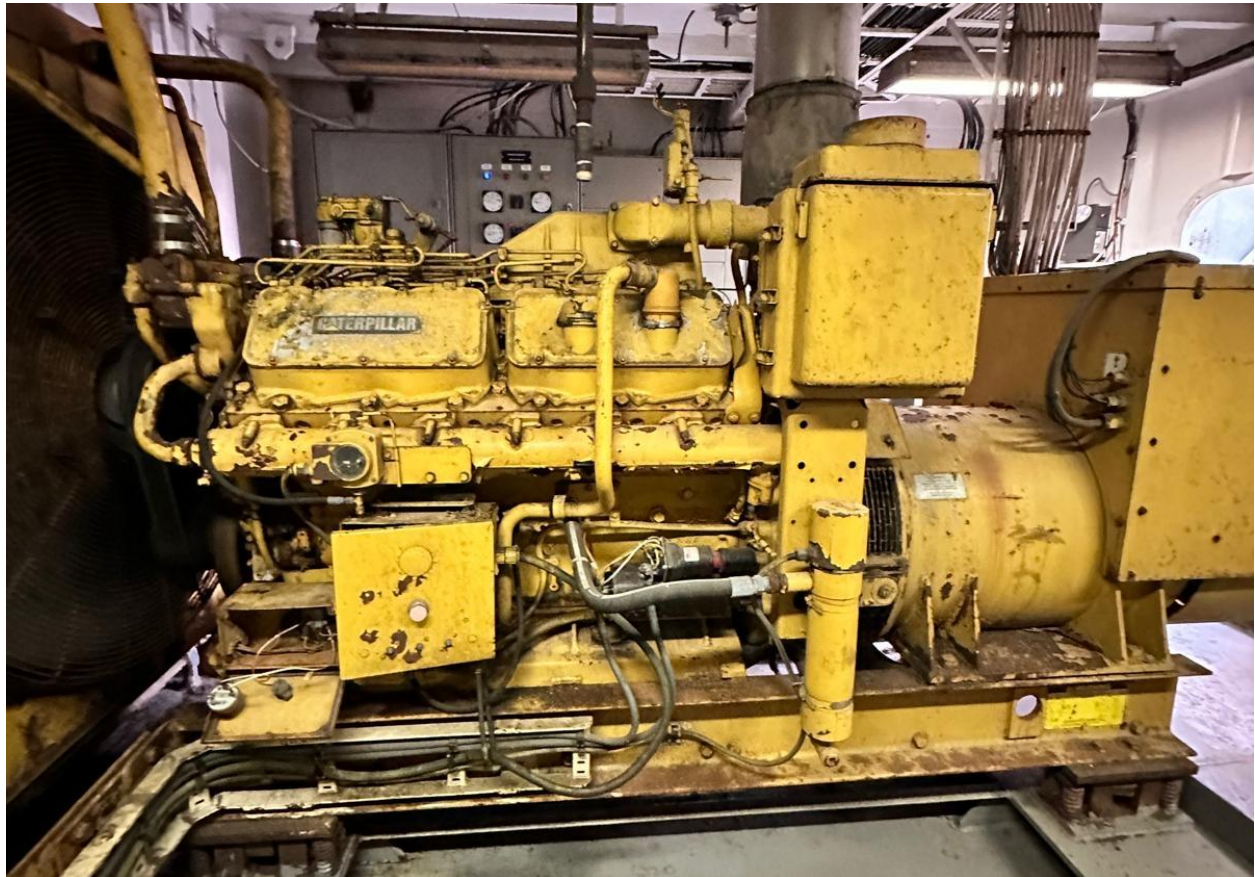
This document is the confidential and proprietary property of VIDA BEM LLC. It may contain technical information, service descriptions, and commercial cost estimates pertaining to VIDA BEM products and services that are confidential. No part of this document may be reproduced, transmitted, or used for other than the designated purposes without prior permission of VIDA BEM LLC.



This document is the confidential and proprietary property of VIDA BEM LLC. It may contain technical information, service descriptions, and commercial cost estimates pertaining to VIDA BEM products and services that are confidential. No part of this document may be reproduced, transmitted, or used for other than the designated purposes without prior permission of VIDA BEM LLC.

EMERGENCY POWER

(1) Cat 3412-TA 719 HP Diesel engine



This document is the confidential and proprietary property of VIDA BEM LLC. It may contain technical information, service descriptions, and commercial cost estimates pertaining to VIDA BEM products and services that are confidential. No part of this document may be reproduced, transmitted, or used for other than the designated purposes without prior permission of VIDA BEM LLC.

CHOKE and KILL MANMIFOLD

3-1/16" x 10,000 psi x 2 HCR & 2 manual



This document is the confidential and proprietary property of VIDA BEM LLC. It may contain technical information, service descriptions, and commercial cost estimates pertaining to VIDA BEM products and services that are confidential. No part of this document may be reproduced, transmitted, or used for other than the designated purposes without prior permission of VIDA BEM LLC.

ADDITIONAL DRILLING EQUIPMENT

Control System: air/electric powered

Hydraulic Catwalk: Model C14, North Rig

Cementing Units: 2 electric triplex pumps. 15000 psi, 14 BPM

CAPACITIES:

- **Liquid Mud:** 1,605 bbls
- **Bulk Mud/ Cement:** 6,240 cu.ft
- **Sacks:** 2,500 sacks
- **Drill Water:** 10,540 bbls
- **Potable Water:** 1,294 bbls
- **Fuel Oil:** 4,727 bbls
- **Base Oil:** 563 bbls
- **Preload Tanks (include combination tanks):** 15,542 kips



This document is the confidential and proprietary property of VIDA BEM LLC. It may contain technical information, service descriptions, and commercial cost estimates pertaining to VIDA BEM products and services that are confidential. No part of this document may be reproduced, transmitted, or used for other than the designated purposes without prior permission of VIDA BEM LLC.

SOLIDS CONTROL EQUIPMENT

- (4) MI SWACO Mongoose PRO Shale Shakers
- (1) MI SWACO Mongoose PRO Mud Cleaner Desilter
- (1) MI SWACO Degaser
- (1) MI SWACO Rig Vacuum



This document is the confidential and proprietary property of VIDA BEM LLC. It may contain technical information, service descriptions, and commercial cost estimates pertaining to VIDA BEM products and services that are confidential. No part of this document may be reproduced, transmitted, or used for other than the designated purposes without prior permission of VIDA BEM LLC.

VESSEL

ACCOMMODATIONS

- 88 berths; main offices, auxiliary offices; mess and galley, meeting room; recreation room and gym, medical office with observation room and bedroom with eight beds for quarantine cases
- **Water Maker:** Model NH75463+APC, FCI
- **Sewage Treatment:** Model RF 4000-M; Red Fox

SECURITY SYSTEMS

Communication and Navigation System GMDSS

Smoke and Heat detection System

CO2 Extinguishing System; Water Extinguishing System with Raw Water System.; Portable extinguishing equipment

Toxic Gas (H₂S) and Combustible Gas (CH₄) Detection System General Alarm System

Emergency Shutdown System

One Lifeboat (63 Man Cap.),

(2) two survival capsules (28 Man Cap. each)

(4) four Life rafts (25 Man Cap. each)

CRANES

- **Model:** PC-120AS Marathon LeTorneau; Boom: 2@ 120' Max. load 90,000 lbs
- **Model:** PC-120AS Marathon LeTorneau; Boom: 1@ 100' Max. load 90,000 lb

This document is the confidential and proprietary property of VIDA BEM LLC. It may contain technical information, service descriptions, and commercial cost estimates pertaining to VIDA BEM products and services that are confidential. No part of this document may be reproduced, transmitted, or used for other than the designated purposes without prior permission of VIDA BEM LLC.



This document is the confidential and proprietary property of VIDA BEM LLC. It may contain technical information, service descriptions, and commercial cost estimates pertaining to VIDA BEM products and services that are confidential. No part of this document may be reproduced, transmitted, or used for other than the designated purposes without prior permission of VIDA BEM LLC.



This document is the confidential and proprietary property of VIDA BEM LLC. It may contain technical information, service descriptions, and commercial cost estimates pertaining to VIDA BEM products and services that are confidential. No part of this document may be reproduced, transmitted, or used for other than the designated purposes without prior permission of VIDA BEM LLC.



This document is the confidential and proprietary property of VIDA BEM LLC. It may contain technical information, service descriptions, and commercial cost estimates pertaining to VIDA BEM products and services that are confidential. No part of this document may be reproduced, transmitted, or used for other than the designated purposes without prior permission of VIDA BEM LLC.



This document is the confidential and proprietary property of VIDA BEM LLC. It may contain technical information, service descriptions, and commercial cost estimates pertaining to VIDA BEM products and services that are confidential. No part of this document may be reproduced, transmitted, or used for other than the designated purposes without prior permission of VIDA BEM LLC.



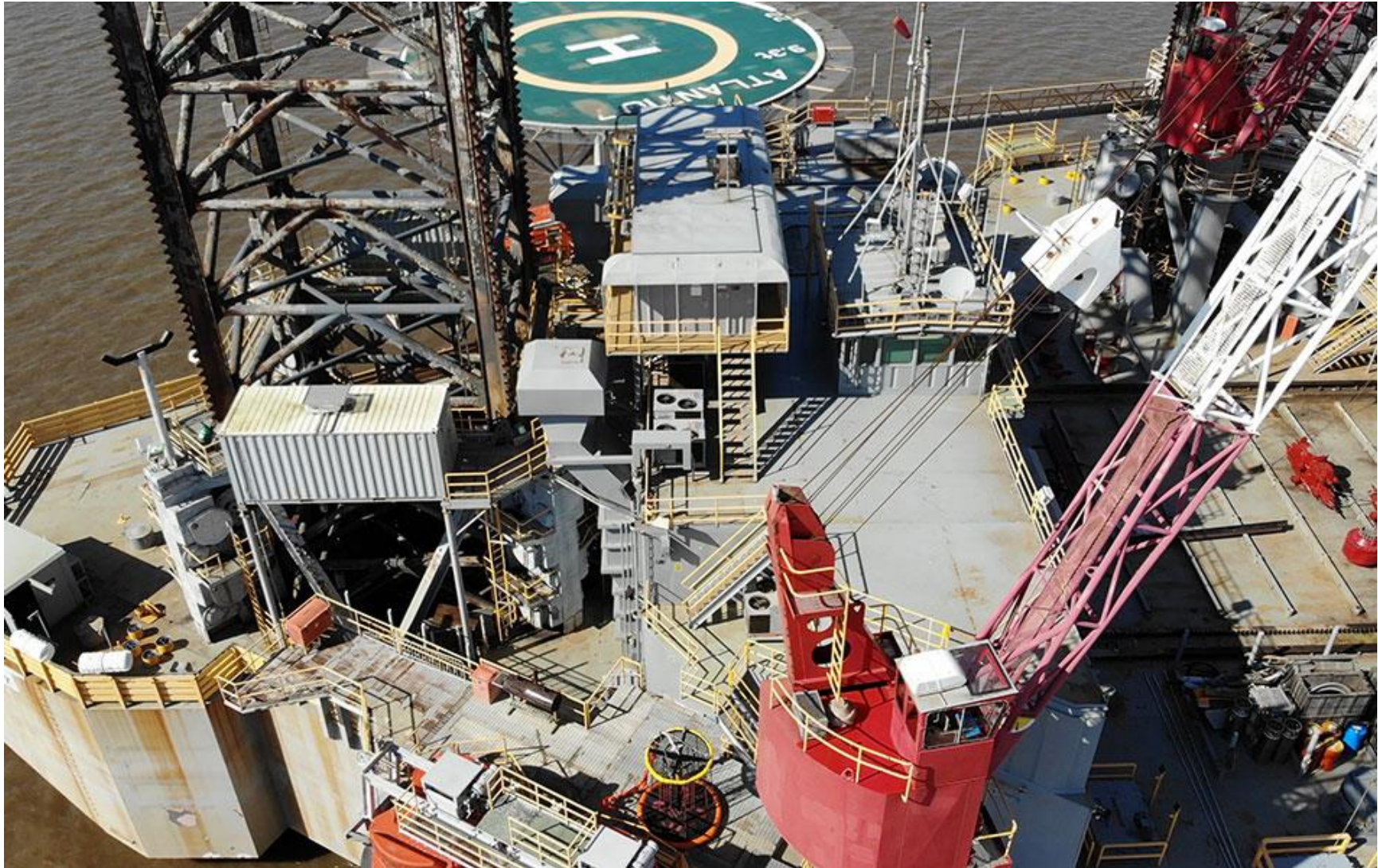
This document is the confidential and proprietary property of VIDA BEM LLC. It may contain technical information, service descriptions, and commercial cost estimates pertaining to VIDA BEM products and services that are confidential. No part of this document may be reproduced, transmitted, or used for other than the designated purposes without prior permission of VIDA BEM LLC.



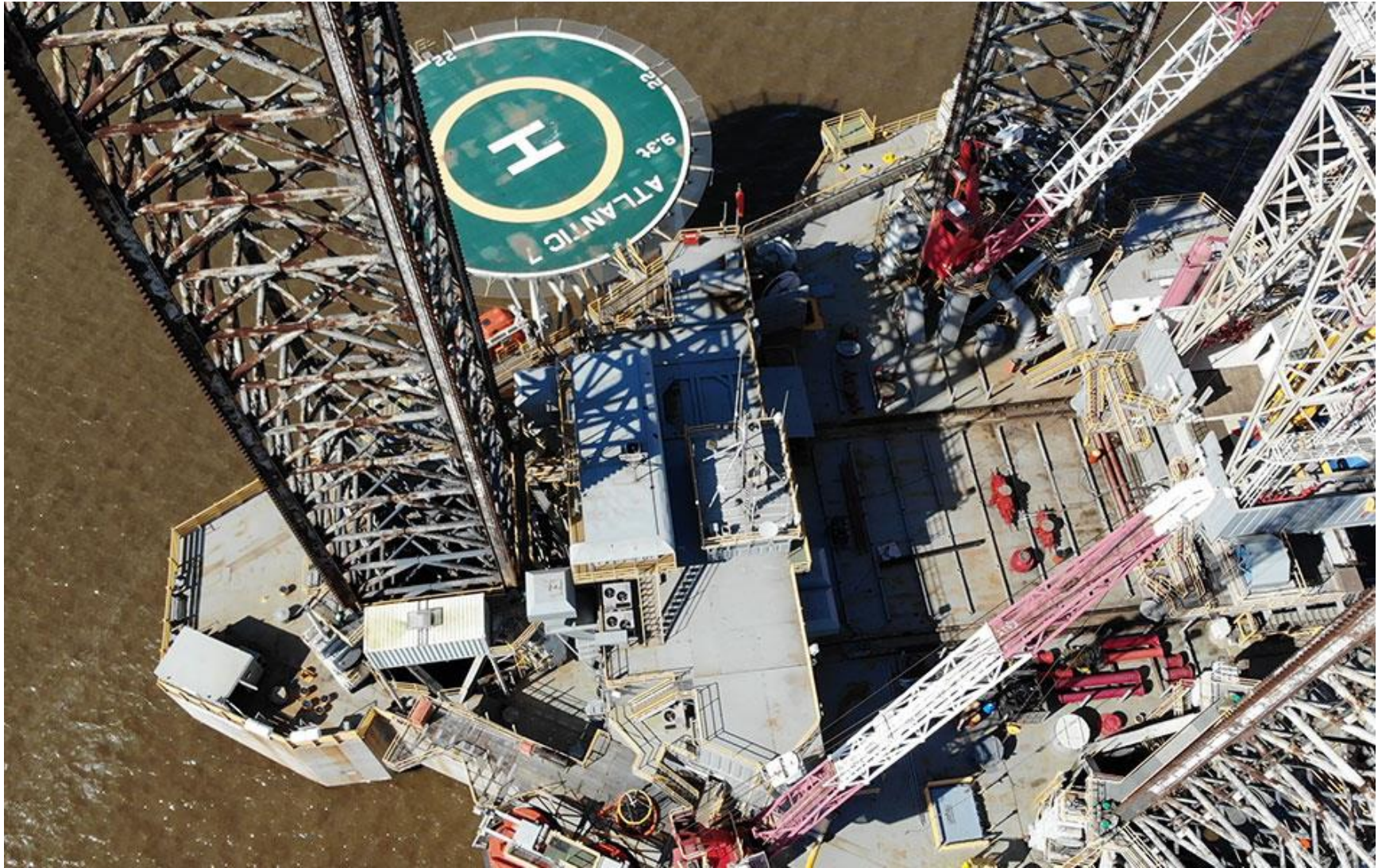
This document is the confidential and proprietary property of VIDA BEM LLC. It may contain technical information, service descriptions, and commercial cost estimates pertaining to VIDA BEM products and services that are confidential. No part of this document may be reproduced, transmitted, or used for other than the designated purposes without prior permission of VIDA BEM LLC.



This document is the confidential and proprietary property of VIDA BEM LLC. It may contain technical information, service descriptions, and commercial cost estimates pertaining to VIDA BEM products and services that are confidential. No part of this document may be reproduced, transmitted, or used for other than the designated purposes without prior permission of VIDA BEM LLC.



This document is the confidential and proprietary property of VIDA BEM LLC. It may contain technical information, service descriptions, and commercial cost estimates pertaining to VIDA BEM products and services that are confidential. No part of this document may be reproduced, transmitted, or used for other than the designated purposes without prior permission of VIDA BEM LLC.



This document is the confidential and proprietary property of VIDA BEM LLC. It may contain technical information, service descriptions, and commercial cost estimates pertaining to VIDA BEM products and services that are confidential. No part of this document may be reproduced, transmitted, or used for other than the designated purposes without prior permission of VIDA BEM LLC.



This document is the confidential and proprietary property of VIDA BEM LLC. It may contain technical information, service descriptions, and commercial cost estimates pertaining to VIDA BEM products and services that are confidential. No part of this document may be reproduced, transmitted, or used for other than the designated purposes without prior permission of VIDA BEM LLC.



This document is the confidential and proprietary property of VIDA BEM LLC. It may contain technical information, service descriptions, and commercial cost estimates pertaining to VIDA BEM products and services that are confidential. No part of this document may be reproduced, transmitted, or used for other than the designated purposes without prior permission of VIDA BEM LLC.



This document is the confidential and proprietary property of VIDA BEM LLC. It may contain technical information, service descriptions, and commercial cost estimates pertaining to VIDA BEM products and services that are confidential. No part of this document may be reproduced, transmitted, or used for other than the designated purposes without prior permission of VIDA BEM LLC.

ACCOMODATIONS



This document is the confidential and proprietary property of VIDA BEM LLC. It may contain technical information, service descriptions, and commercial cost estimates pertaining to VIDA BEM products and services that are confidential. No part of this document may be reproduced, transmitted, or used for other than the designated purposes without prior permission of VIDA BEM LLC.



This document is the confidential and proprietary property of VIDA BEM LLC. It may contain technical information, service descriptions, and commercial cost estimates pertaining to VIDA BEM products and services that are confidential. No part of this document may be reproduced, transmitted, or used for other than the designated purposes without prior permission of VIDA BEM LLC.



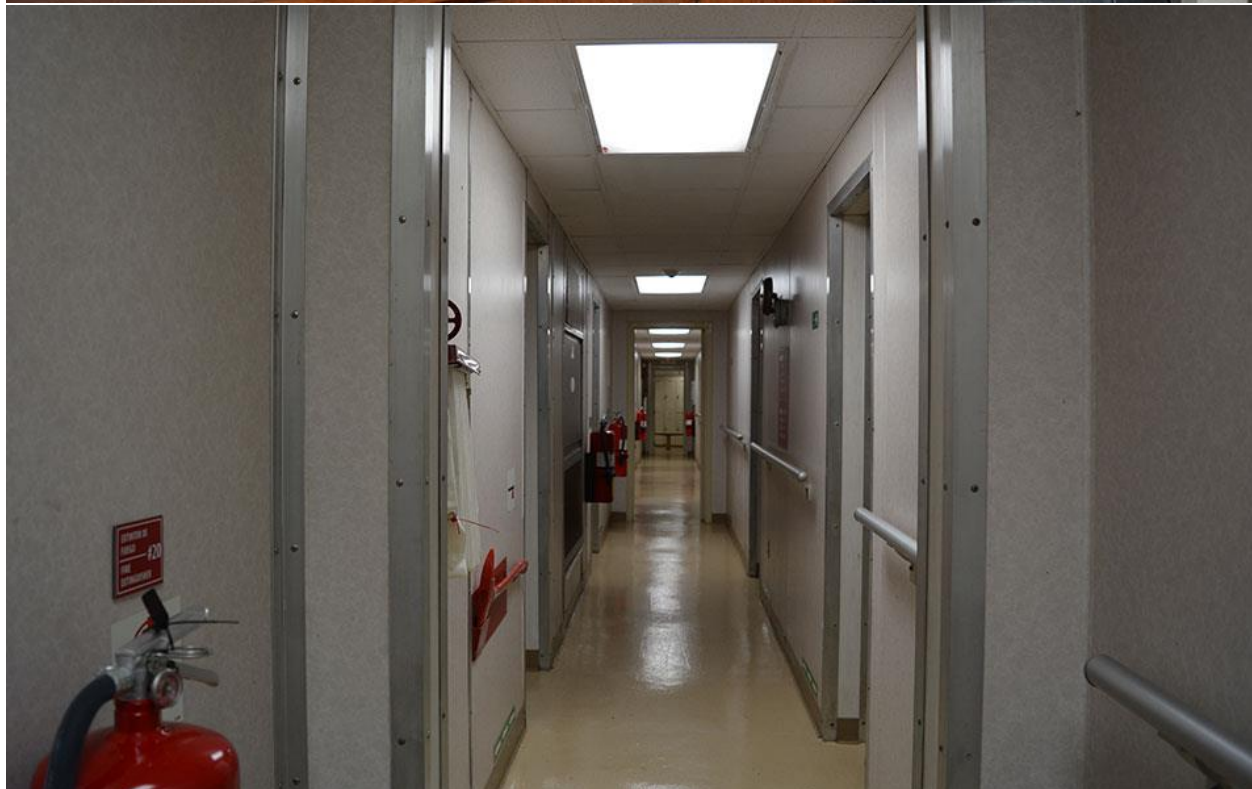
This document is the confidential and proprietary property of VIDA BEM LLC. It may contain technical information, service descriptions, and commercial cost estimates pertaining to VIDA BEM products and services that are confidential. No part of this document may be reproduced, transmitted, or used for other than the designated purposes without prior permission of VIDA BEM LLC.



This document is the confidential and proprietary property of VIDA BEM LLC. It may contain technical information, service descriptions, and commercial cost estimates pertaining to VIDA BEM products and services that are confidential. No part of this document may be reproduced, transmitted, or used for other than the designated purposes without prior permission of VIDA BEM LLC.



This document is the confidential and proprietary property of VIDA BEM LLC. It may contain technical information, service descriptions, and commercial cost estimates pertaining to VIDA BEM products and services that are confidential. No part of this document may be reproduced, transmitted, or used for other than the designated purposes without prior permission of VIDA BEM LLC.



This document is the confidential and proprietary property of VIDA BEM LLC. It may contain technical information, service descriptions, and commercial cost estimates pertaining to VIDA BEM products and services that are confidential. No part of this document may be reproduced, transmitted, or used for other than the designated purposes without prior permission of VIDA BEM LLC.



This document is the confidential and proprietary property of VIDA BEM LLC. It may contain technical information, service descriptions, and commercial cost estimates pertaining to VIDA BEM products and services that are confidential. No part of this document may be reproduced, transmitted, or used for other than the designated purposes without prior permission of VIDA BEM LLC.



This document is the confidential and proprietary property of VIDA BEM LLC. It may contain technical information, service descriptions, and commercial cost estimates pertaining to VIDA BEM products and services that are confidential. No part of this document may be reproduced, transmitted, or used for other than the designated purposes without prior permission of VIDA BEM LLC.



This document is the confidential and proprietary property of VIDA BEM LLC. It may contain technical information, service descriptions, and commercial cost estimates pertaining to VIDA BEM products and services that are confidential. No part of this document may be reproduced, transmitted, or used for other than the designated purposes without prior permission of VIDA BEM LLC.



This document is the confidential and proprietary property of VIDA BEM LLC. It may contain technical information, service descriptions, and commercial cost estimates pertaining to VIDA BEM products and services that are confidential. No part of this document may be reproduced, transmitted, or used for other than the designated purposes without prior permission of VIDA BEM LLC.



This document is the confidential and proprietary property of VIDA BEM LLC. It may contain technical information, service descriptions, and commercial cost estimates pertaining to VIDA BEM products and services that are confidential. No part of this document may be reproduced, transmitted, or used for other than the designated purposes without prior permission of VIDA BEM LLC.



This document is the confidential and proprietary property of VIDA BEM LLC. It may contain technical information, service descriptions, and commercial cost estimates pertaining to VIDA BEM products and services that are confidential. No part of this document may be reproduced, transmitted, or used for other than the designated purposes without prior permission of VIDA BEM LLC.

MAIN DECK



This document is the confidential and proprietary property of VIDA BEM LLC. It may contain technical information, service descriptions, and commercial cost estimates pertaining to VIDA BEM products and services that are confidential. No part of this document may be reproduced, transmitted, or used for other than the designated purposes without prior permission of VIDA BEM LLC.



This document is the confidential and proprietary property of VIDA BEM LLC. It may contain technical information, service descriptions, and commercial cost estimates pertaining to VIDA BEM products and services that are confidential. No part of this document may be reproduced, transmitted, or used for other than the designated purposes without prior permission of VIDA BEM LLC.



This document is the confidential and proprietary property of VIDA BEM LLC. It may contain technical information, service descriptions, and commercial cost estimates pertaining to VIDA BEM products and services that are confidential. No part of this document may be reproduced, transmitted, or used for other than the designated purposes without prior permission of VIDA BEM LLC.



This document is the confidential and proprietary property of VIDA BEM LLC. It may contain technical information, service descriptions, and commercial cost estimates pertaining to VIDA BEM products and services that are confidential. No part of this document may be reproduced, transmitted, or used for other than the designated purposes without prior permission of VIDA BEM LLC.



This document is the confidential and proprietary property of VIDA BEM LLC. It may contain technical information, service descriptions, and commercial cost estimates pertaining to VIDA BEM products and services that are confidential. No part of this document may be reproduced, transmitted, or used for other than the designated purposes without prior permission of VIDA BEM LLC.



This document is the confidential and proprietary property of VIDA BEM LLC. It may contain technical information, service descriptions, and commercial cost estimates pertaining to VIDA BEM products and services that are confidential. No part of this document may be reproduced, transmitted, or used for other than the designated purposes without prior permission of VIDA BEM LLC.



This document is the confidential and proprietary property of VIDA BEM LLC. It may contain technical information, service descriptions, and commercial cost estimates pertaining to VIDA BEM products and services that are confidential. No part of this document may be reproduced, transmitted, or used for other than the designated purposes without prior permission of VIDA BEM LLC.



This document is the confidential and proprietary property of VIDA BEM LLC. It may contain technical information, service descriptions, and commercial cost estimates pertaining to VIDA BEM products and services that are confidential. No part of this document may be reproduced, transmitted, or used for other than the designated purposes without prior permission of VIDA BEM LLC.



This document is the confidential and proprietary property of VIDA BEM LLC. It may contain technical information, service descriptions, and commercial cost estimates pertaining to VIDA BEM products and services that are confidential. No part of this document may be reproduced, transmitted, or used for other than the designated purposes without prior permission of VIDA BEM LLC.



This document is the confidential and proprietary property of VIDA BEM LLC. It may contain technical information, service descriptions, and commercial cost estimates pertaining to VIDA BEM products and services that are confidential. No part of this document may be reproduced, transmitted, or used for other than the designated purposes without prior permission of VIDA BEM LLC.



This document is the confidential and proprietary property of VIDA BEM LLC. It may contain technical information, service descriptions, and commercial cost estimates pertaining to VIDA BEM products and services that are confidential. No part of this document may be reproduced, transmitted, or used for other than the designated purposes without prior permission of VIDA BEM LLC.



This document is the confidential and proprietary property of VIDA BEM LLC. It may contain technical information, service descriptions, and commercial cost estimates pertaining to VIDA BEM products and services that are confidential. No part of this document may be reproduced, transmitted, or used for other than the designated purposes without prior permission of VIDA BEM LLC.

To Schedule an Inspection Please Contact:

Jose Lozano

Founder

VIDA BEM LLC

Office: 800 957 2391

Cell: 661 303 3190 (What's APP)

Email: jlozano@vidabem.us

Visit Us: www.vidaeq.com

Subject to prior sale and or other disposition.

Purchasing Party is responsible for verifying accuracy of information provided. All Items to be quoted in US currency. All prices and availability are subject to change without notice and are subject to applicable sales tax. Title to all goods listed remain with the seller until the purchase price is fully paid. Equipment is purchased as is, where is, without warranty unless otherwise specified. Use hours are estimate hours as of the date of this posting and are not guaranteed. Equipment pictured may contain attachments and/or accessories not priced in this offer. Sale subject to terms and conditions on final bill of sale.

This document is the confidential and proprietary property of VIDA BEM LLC. It may contain technical information, service descriptions, and commercial cost estimates pertaining to VIDA BEM products and services that are confidential. No part of this document may be reproduced, transmitted, or used for other than the designated purposes without prior permission of VIDA BEM LLC.