



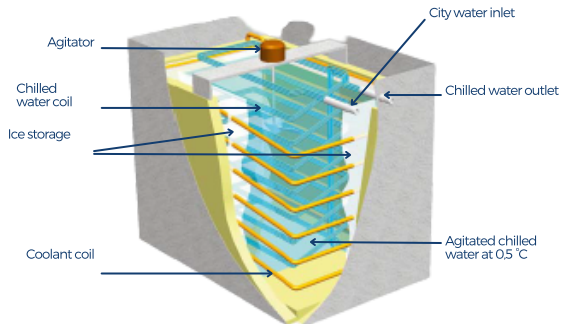
WATER CHILLERS WITH ICE ACCUMULATION

Running in closed
circuit for
perfect hygiene

TO COMBINE WITH OUR WATER METERS



- The water chillers insulated tank contains a double circuit. One coil with the coolant transforms the water stored in the tank into ice
- No contact between chilled water and coolant
- No contact between chilled water and ambient air
- Small size
- Running with the normal water system pressure : no pump needed
- If installation further than 3 m from the water meter, the use of BOA pipe is recommended to ensure the right temperature

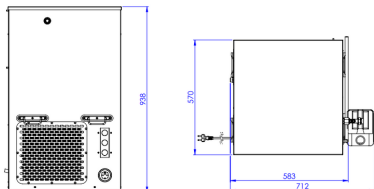


CHARACTERISTICS

When more than 40 litres chilled water is required in an hour at less than 2°C, two water chillers in series are recommended.

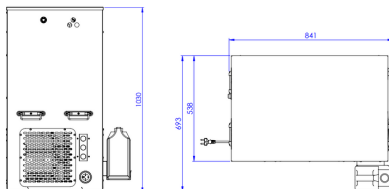
MODEL SP 100

- Power supply : 500 watts
- 75 liters of water available at startup + 25 l / hour
- Speed / 24h : 600 l
- Waiting time for full capacity : 3 hours
- Dimensions (LxHx): 71,2 x 57 x 93,8 cm
- Net weight : 50 kg



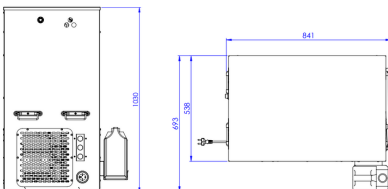
MODEL SP 200

- Power supply : 750 watts
- 250 liters of water available at startup + 40 l / hour
- Speed / 24h : 960 l
- Waiting time for full capacity : 4 hours
- Dimensions (LxHx): 84,1 x 69,3 x 103 cm
- Net weight : 105 kg



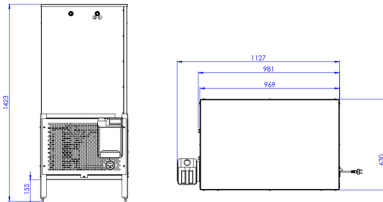
MODEL SP 300

- Power supply : 1000 watts
- 250 liters of water available at startup + 80 l / hour
- Speed / 24h : 1920 l
- Waiting time for full capacity : 4 hours
- Dimensions (LxHx): 84,1 x 69,3 x 103 cm
- Net weight : 120 kg



MODEL SP 400

- Power supply : 2 x 1000 watts
- 480 liters of water available at startup + 160 l / hour
- Speed / 24h : 3840 l
- Waiting time for full capacity : 3 hours
- Dimensions (LxHx): 112,7 x 63 x 142,3 cm
- Net weight : 250 kg



STOPPIL

ZAC du Chêne Saint Flacré
6 rue de la Découverte
77600 Chanteloup-en-Brie - France

Email : commercial@stoppil.fr
Tel. : +33(0) 1 60 31 55 55
Fax. : +33(0) 1 60 31 55 50

www.stoppil-panification.fr



MORE FEATURES

- Outlet temperature (delta 15 °C) : 2-4 °C
- Outlet water pressure (without a pump) : 1-5 bars
- Electricity : 220-240 V single-phase
- Speed (depending on water pressure) : 11-20 l/mn (11 l/mn with a 2 bars pressure)
- Water inlet diameter : R 1/2"
- Mirror polished stainless steel
- Use of city water, pressure of your network

- Conforme norme CE
- Garantie 1 an