



8242 Travelair St., Houston, Texas 77061
Phone: 713-649-6878 | Fax: 713-649-6766

FUEL TRUCK 9283

Unit #: 9283

Manufactured by Garsite

Capacity: 5,000 gallons

DOT 406 Compliant

2 hoses over-the-wing

1 single point

Automatic transmission

Miles 19,292. Hours 9,828

Chassis

Make: International

GVW-LBS: 37000

Engine: International

Engine Model: D210. Engine Family: DT466

Fuel type: Diesel

Tank

Manufacturer: Progress Tank

Shell Material: Aluminum 5454-H32

Head Material: Aluminum 5454-0

Weld Material: ER-5356

Flow Meter System

Flow Meter manufacturer: Liquid Controls

Flow Meter 1 = Meter for Over the wing fueling

**Flow Meter 1 Model: M-7-2 Flow
Meter 1 Max Pressure: 150 PSI Flow
Meter 1 Capacity: 10-100 GPM.**

Flow Meter 2 = Meter for Single Point fueling
Flow Meter 2 Model: M-25-2

**Flow Meter 2 Max Pressure: 150 PSI
Flow Meter 2 Capacity: 30-300 GPM.**

Electronic Meter Register System

**Electronic meter register manufacturer: Liquid Controls
Model of electronic meter register: E365117.**

LectroCount: LCRH

Pump

**Manufacturer: Gormann-Rupp Model:
03H1-GR / S2**

Filter Vessel

**Manufacturer: Facet
Model: HCS-C-333-1436
Flow Rate 300 GPM
Requires the following filters:
- CAA33-5SB (Quantity 4) -
SS622FB-5 (Quantity 1)
Requires the following
gasket: - 669919 (Quantity 1)**

Prist Injection System

Manufacturer: Enraf

Mini-Pak 3000





 **OMEGA**
AVIATION SERVICES INC.





OMEGA
AVIATION SERVICES INC.



Facet

Facet USA, Inc.
9910 E. 56th Street North
Tulsa, OK. 74117-4011 USA
(918) 272-8700 Fax (918) 272-8787

FACET 5th EDITION SPECIFICATIONS

MODEL NO.

HCS-C-333-1436

API-1581 5th EDITION: CATEGORY

C

TYPE

S-LW

FLOW RATE

300 GPM

CERT #

API-5-0753

REPLACE CARTRIDGES @

15PSIG

MODEL NO.

CAA33-5SB

QTY

3

MODEL NO.

SS436FB-5

QTY

1

MODEL NO.

QTY

TORQUE ON ELEMENTS

SCREW BASE / ROD MOUNT

30 lbs / ft

TORQUE ON SEPARATORS

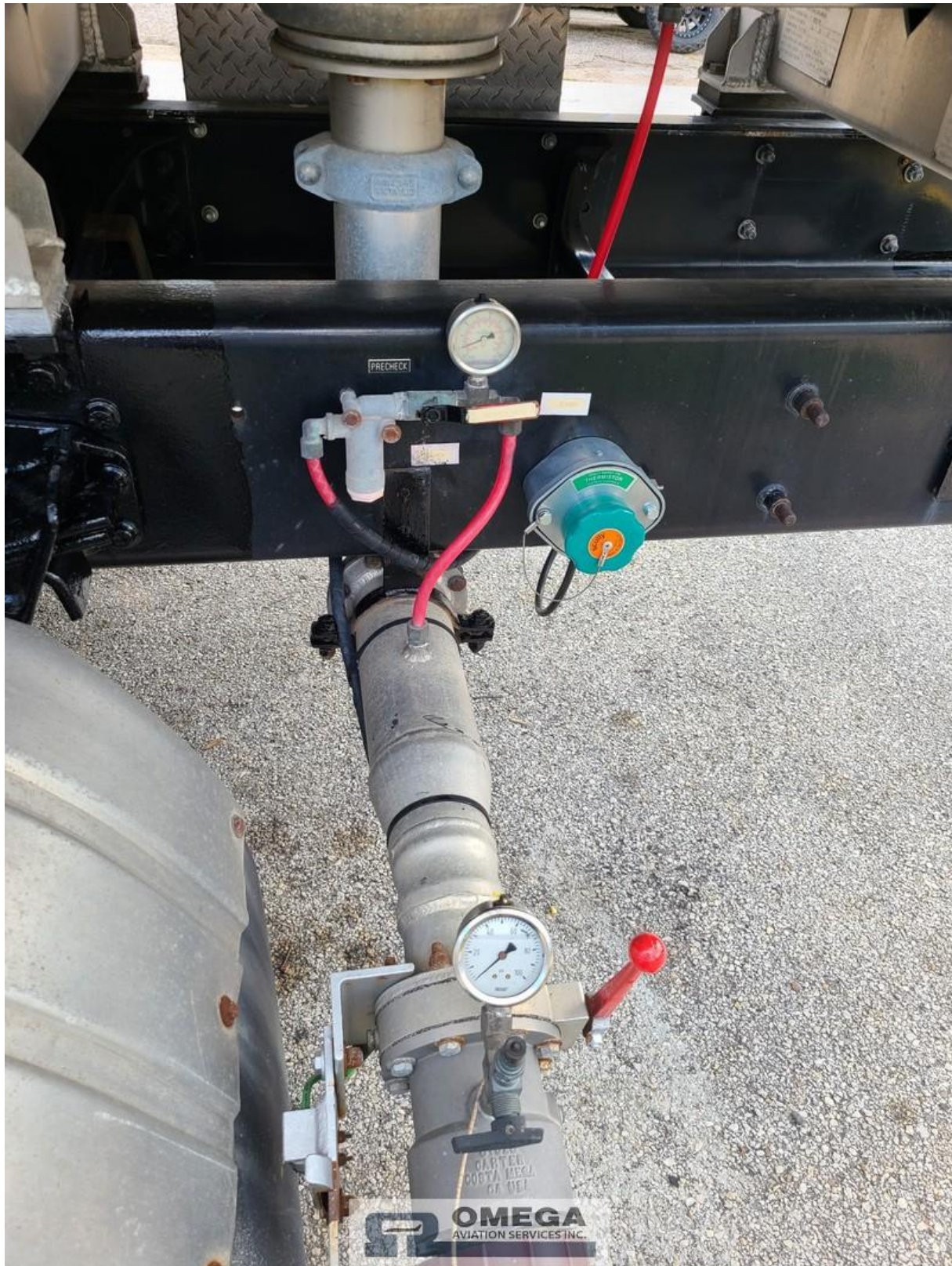
5 lbs / ft

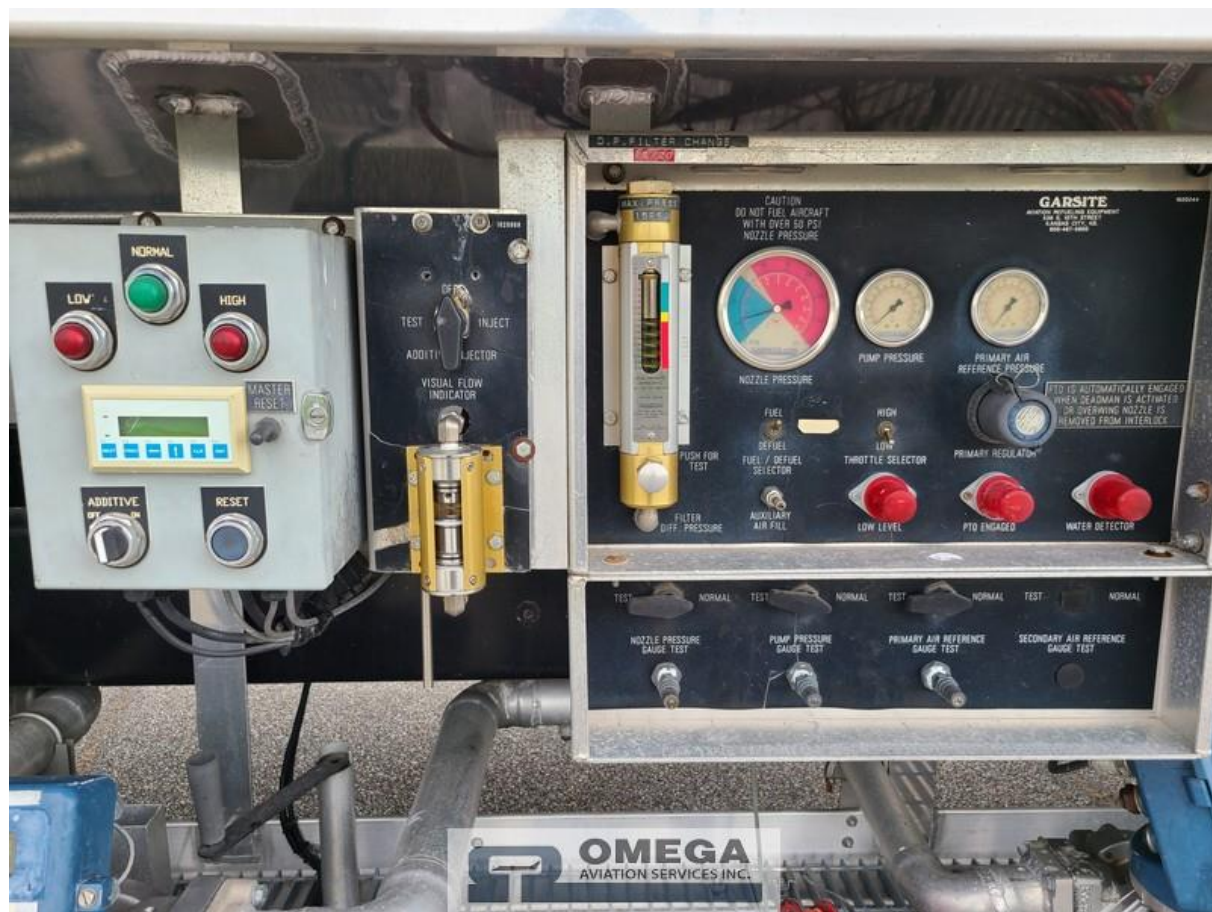
P/N 685803-5



OMEGA
AVIATION SERVICES INC.











CHASSIS-CAB MOD. BY
INTERNATIONAL TRUCK
AND ENGINE CORPORATION
THIS UNIT IS
NOT FOR USE ON

INTERNATIONAL TRUCK AND ENGINE CORPORATION
WARRENVILLE, ILLINOIS **INTERNATIONAL®**

VIN

1HTWAAAR57J459283

DATE MFG.

12-2006

MODEL

7300 SFA 4X2

W.B.

680

PD LOC - DATE



MADE IN THE UNITED STATES OF AMERICA



GARSITE_{LLC.}

Aviation Refueling Equipment

539 S.10th Street, Kansas City, KS 66105
www.garsite.com Toll-Free: 800-467-5600

SERIAL NO. 4991 DATE OF MFG. 10 / 07

MODEL NO. 5MA-300A-MR-ANDAS

ORDER NO.



OMEGA
AVIATION SERVICES INC.











