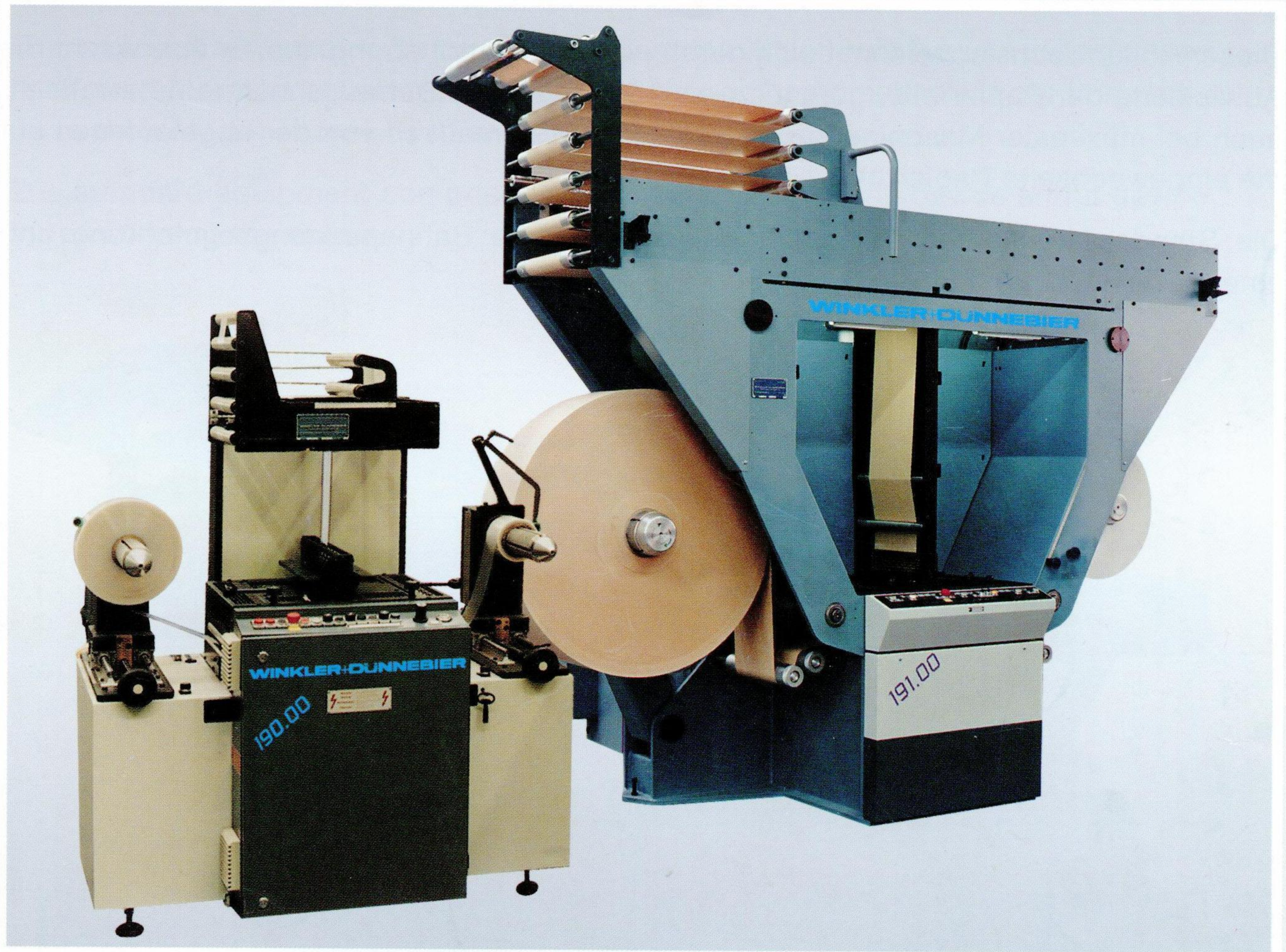


# HELIOS 191

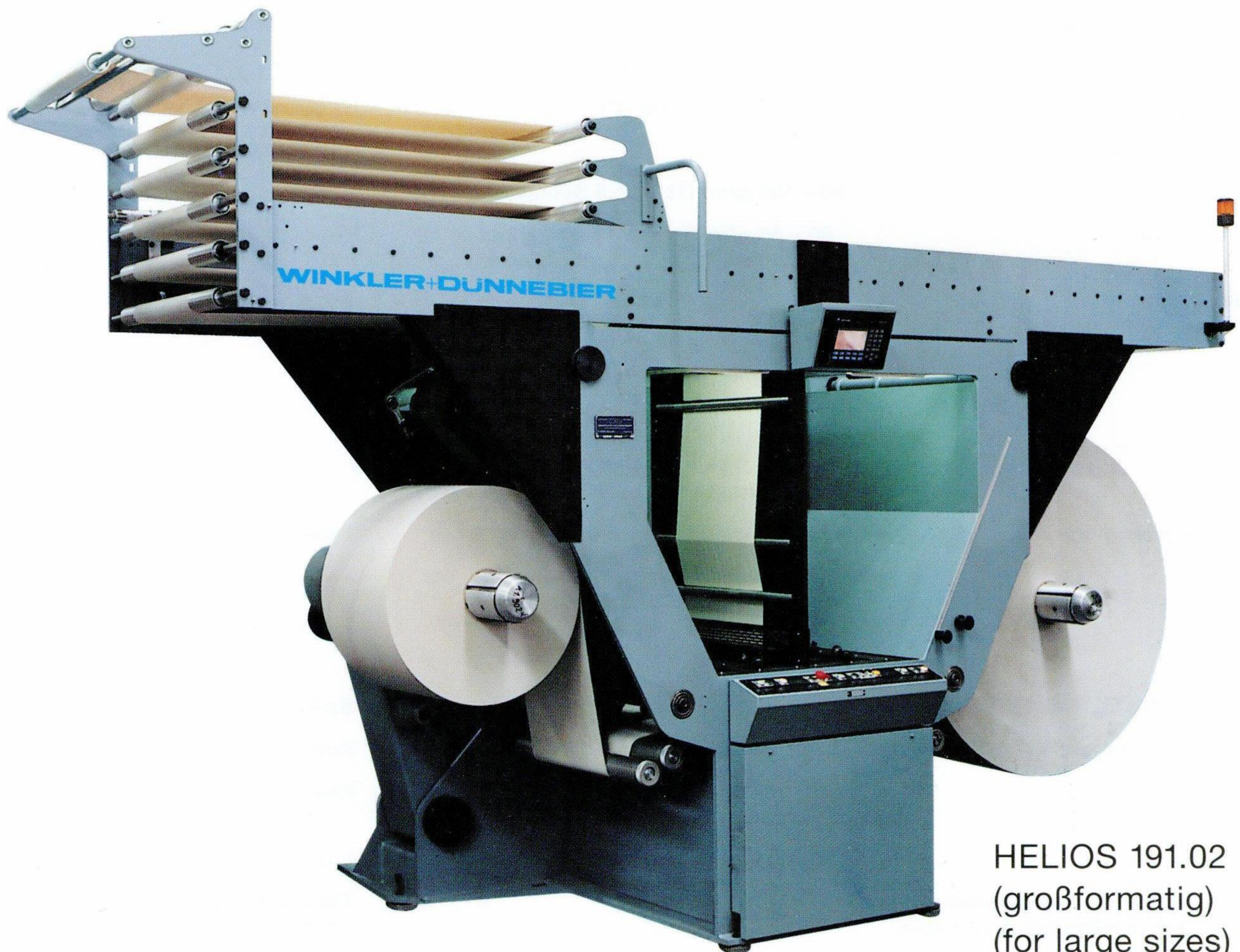


**W+D Splicer for Window Material and  
Silicone Paper Reels HELIOS 190  
W+D Paper Reel Splicers HELIOS 191**

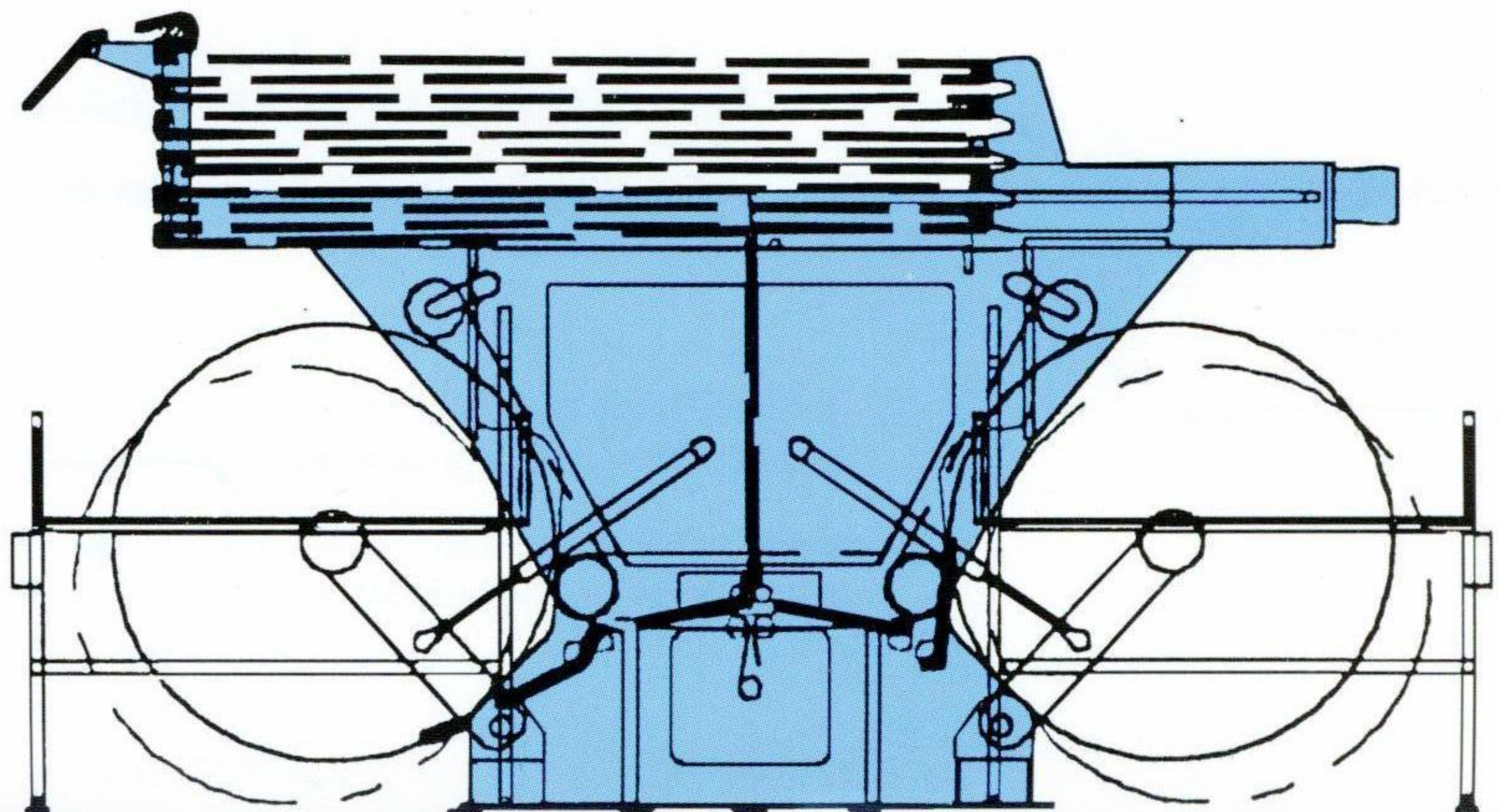


This splicer is remarkable for its ease of operation. It controls the unwinding paper reel, guarantees an equal web tension and changes automatically from the used-up to the new paper reel, even at max. machine speed.

The standard equipment comprises a web-tension adjusting device and a device for positioning the splice.



HELIOS 191.02  
(großformatig)  
(for large sizes)





**Technische Daten:****Papierrollenwechsler  
HELIOS 191.00  
(kleinformatig)**

Rollendurchmesser	max. 1530 mm = 60 1/4"
Rollenbreite	min. 150 mm = 5 29/32" max. 390 mm = 15 11/32"
Rollengewicht	max. 750 kg = (7358 N)
Die Papierrolle muß klanghart und genau rechtwinklig gewickelt sein.	
Wechselgeschwindigkeit	max. 8 m/sec. (480 m/min. = 1574 ft/min.)
Hülsendurchmesser	127 bzw. 153 (5" und 6")
Klebeausführung	überlappt, 30 mm (1 3/16")
Klebebandbreite	30 mm (1 3/16")
Papier	70 – 140 g/m² (18 – 37,5 Substance)
Druckluft (ungeölt)	min. 5 bar / max. 6 bar
Gesamtanschlußwert	19 kVA

**Papierrollenwechsler  
HELIOS 191.02  
(großformatig)**

Rollendurchmesser	max. 1530 mm = 60 1/4"
Rollenbreite	min. 157 mm = 6 3/16" max. 730 mm = 28 3/4"
Rollengewicht	max. 1400 kg = (13734 N)
Die Papierrolle muß klanghart und genau rechtwinklig gewickelt sein.	
Wechselgeschwindigkeit	max. 6,5 m/sec. (390 m/min. = 1279 ft/min.)
Hülsendurchmesser	153 mm
Klebeausführung	überlappt, 30 mm (1 3/16")
Klebebandbreite	30 mm (1 3/16")
Papier	70 – 140 g/m² (18 – 37,5 Substance)
Druckluft (ungeölt)	min. 5 bar / max. 6 bar
Gesamtanschlußwert	35 kVA

**Technical Data:****Paper Reel Splicer  
HELIOS 191.00  
(for small sizes)**

Reel diameter	
Reel width	
Reel weight	
The paper reel has to be wound tightly and must be exactly right angled	
Changing speed	
Core diameter	
Lap joint	
Width of adhesive tape	
Paper weight	
Pressure air (unoiled)	
Total connected load	

**Paper Reel Splicer  
HELIOS 191.02  
(for large sizes)**

Reel diameter	
Reel width	
Reel weight	
The paper reel has to be wound tightly and must be exactly right angled	
changing speed	
Core diameter	
Lap joint	
width of adhesive tape	
Paper weight	
Pressure air (unoiled)	
Total connected load	

