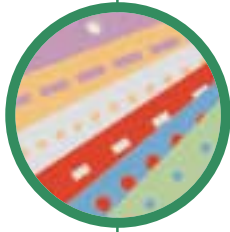


ALPHA-DOC®

NEW MODEL
MKIII



VERSATILE, HANDS-FREE AUTOMATIC DOCUMENT PUNCHING

The remarkable ALPHA-DOC® MKIII combines the versatility and ease of an office machine with the speed and efficiency of an automatic punch – for perfect holes every time. Simply load the tray, push a button and walk away for hands-free punching of pre-collated books, presentations, proposals, reports... and even tabbed sheets.

AUTOMATIC DOCUMENT PUNCHING



ALPHA-DOC®

The ALPHA-DOC® MKIII punches a wide variety of material in virtually any size from 5-1/2" x 5-1/2" up to 13" x 13". Our simplified paper path and unique turnover device with receding stacker provide low waste and assures that pages are kept in perfect pre-collated order.

WHEN SPEED, EASE OF USE AND EFFICIENCY COUNT

With speeds of up to 48,000 sheets per hour, a wide assortment of die patterns available, and super fast changeover times, the ALPHA-DOC® from James Burn will 'punch-up' your document binding productivity without 'punching holes' in your document finishing budget.



DOCUMENT FINISHING SOLUTIONS®

ALPHA-DOC[®]

AUTOMATIC DOCUMENT PUNCHING

MKIII

FEATURES & BENEFITS



User-friendly Touch Key Controls maximize productivity.



Unique turnover device keeps pre-collated work in perfect order, with Receding Stacker.



Top Feed Sheet Pickup with large capacity feeder of up to 14-1/2" pile.

- ◆ **Super Fast** Your productivity will markedly improve with 2 punching speeds of 70 & 80 strokes/minute – up to 48,000 sheets/hr.
- ◆ **Versatile** Punches wide variety of paper stocks and covers...even tabbed sheets...in virtually any size from 5-1/2" x 5-1/2" up to 13" x 13".
- ◆ **Easy to Use** Hands-free operation. Simply load the tray, push a button and walk away. No special training or personnel required.
- ◆ **Simple Formatting** Electronically controlled from user-friendly 'Touch Key' pad. Pre-set standard paper sizes changeover in 2 minutes. Hardened steel dies changeover in 5 minutes.
- ◆ **Top Feed Sheet Pickup** Variable 5 to 10 sheets of 20# Bond with large capacity feeder of up to 14-1/2" pile.
- ◆ **Retractable Pins** Eliminates "nicking" at edge of sheets, producing clean, perfect holes for binding.
- ◆ **Unique Turnover Device** Keeps pre-collated document pages in perfect order, with receding stacker.
- ◆ **Tabbing Device** Punches all standard tab-cut sheets.
- ◆ **Tools Available** Wide choice of round and square hole punching dies including: Wire-O[®]; UniCoil[®]; plastic comb; Velobind[®]; 2, 3, & 4 ring binder; spiral; etc.
- ◆ **Air-Blow Option** Optional air valve attachment helps separate sheets with static buildup. Air not supplied.
- ◆ **Installation** Caster wheels allow quick and easy machine placement.
- ◆ **Voltage Requirements** Quiet 110v single phase 60 Hz. No air required.
- ◆ **Dimensions** 46" H x 72" W x 28" D, with turnover device
- ◆ **Weight** 650 lbs. unpacked



1-800-431-4610 / FAX 1-800-562-8630 / www.wire-o.com

© 2001 JBI. "Alpha-Doc", "Wire-O", "UniCoil", and "Document Finishing Solutions" are registered trademarks of James Burn International. JBI reserves the right to change or alter its specifications as part of its continuous improvement effort.

AN OFFICIAL
Lhermite
PUNCHING PRODUCT

Printed in the USA 2.5M08/01