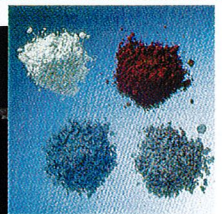
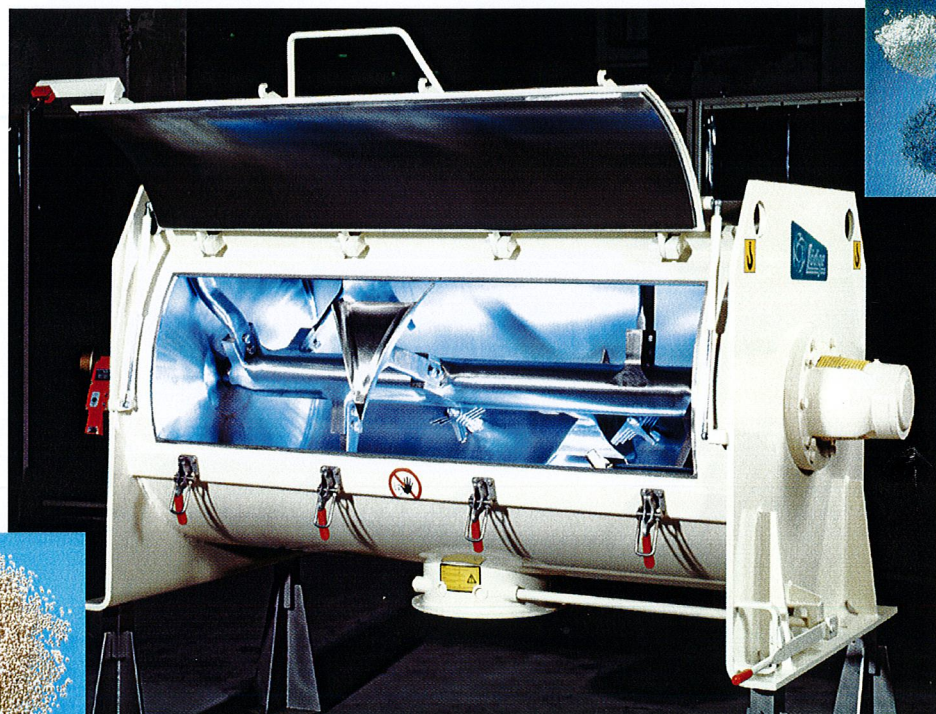
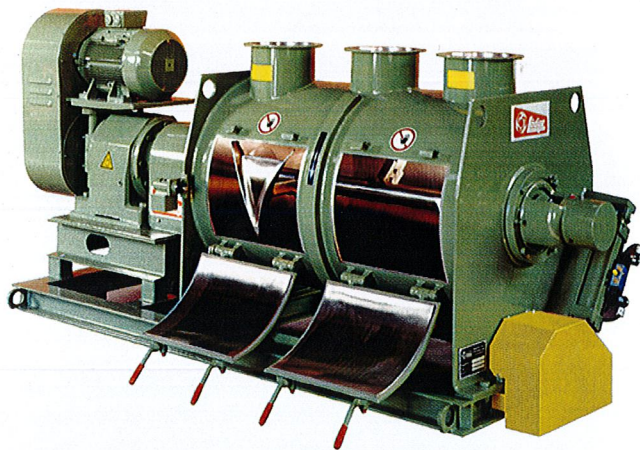




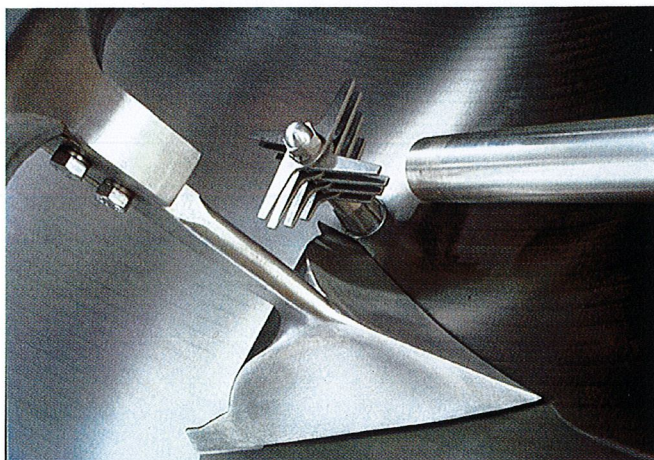
Ploughshare® - Batch Mixer



- Highest quality mixes
- Short mixing times
- Reproduceable batches
- Gentle treatment of the product
- Maximum availability
- Low maintenance mixer concept
- Easy accessibility to all inside parts of the mixer



Ploughshare® Batch Mixer FKM 600 D



Ploughshare®-Shovel -Chopper -Injection Lance
Liquid supply straight into the area in which the chopper operates

Sizes

Type	Drum Volume in liter	Working Capacity in liter
FKM 130 D	130	50 - 90
FKM 300 D	300	100 - 210
FKM 600 D	600	200 - 420
FKM 1200 D	1200	400 - 850
FKM 1600 D	1600	550 - 1100
FKM 2000 D	2000	800 - 1400
FKM 3000 D	3000	1200 - 2100
FKM 4200 D	4200	1500 - 3000
FKM 6000 D	6000	2100 - 4200
FKM 8000 D	8000	3000 - 5500
FKM 10000 D	10000	4000 - 7000
FKM 13500 D	13500	5000 - 10000
FKM 15000 D	15000	6000 - 11000
FKM 20000 D	20000	8000 - 14000
FKM 25000 D	25000	10000 - 17000
FKM 30000 D	30000	12000 - 21000

Batch Mixers

Batch mixers operate on the hurling and whirling principle introduced by Lödige to mixing technology. Equipped with mixing elements which can be adapted to individual requirement, the mixes produced in these machines are of the highest quality.

Mode of Operation

Ploughshare® shovels rotate as mixing elements in special arrangement on the mixer shaft in a horizontal, cylindrical drum. The size, number and positioning, geometric shape and peripheral speed of the mixing elements are coordinated in such a way that they produce a three-dimensional movement of the components. The resultant turbulence in the mix, whereby all the product is constantly involved in the mixing process, prevents the formation of deadspots or low-movement zones in the mixing drum and ensures high speed, precision mixing. To prevent particles from being squashed against the drum wall, the mixing elements are specially shaped to lift product from the wall within the radial movement of the mix.

In some cases additional assistance for the mixing elements to obtain the desired mixing effect is required. Separately driven, high-speed choppers can be installed to disperse agglomerations and control granulation during the mixing process in coordination with the mixing elements.

Range of Application

- Processing bulk materials (powdery, granular, fibrous)
- Supply of liquids to the dry solid materials (moistening + granulating)
- Processing pumpable materials

Optional Equipment

- Surfaces with maximum wear resistance
- Heavy duty constructional steels, stainless steels and special materials
- Chopper units
- Heated/cooled drum, endplates and shaft
- Equipment for liquid supply