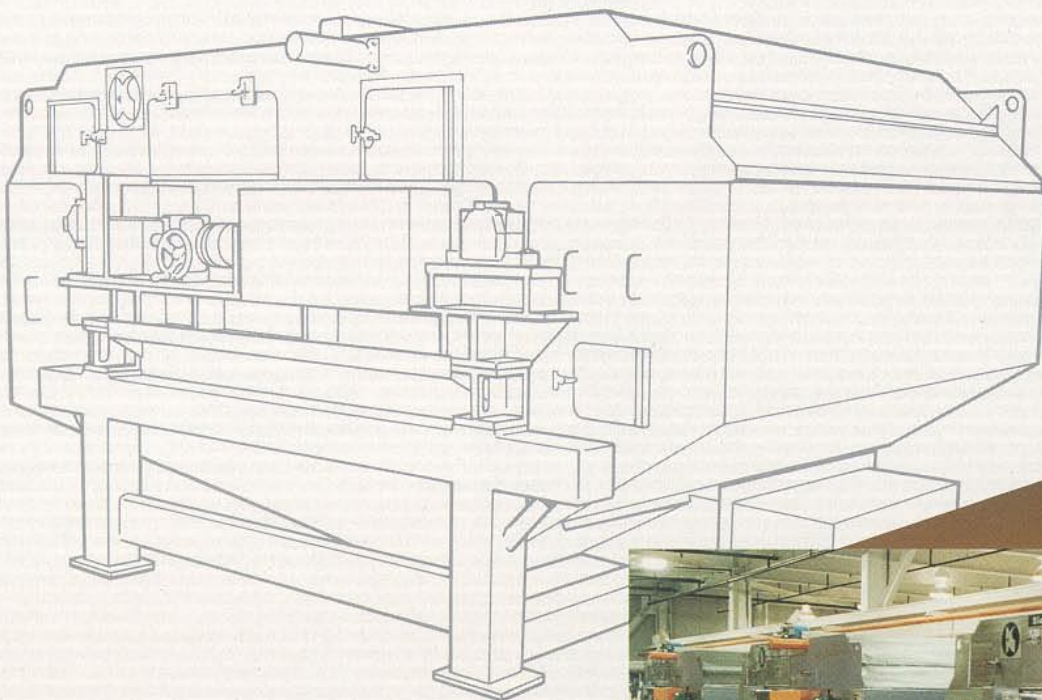


Black Clawson

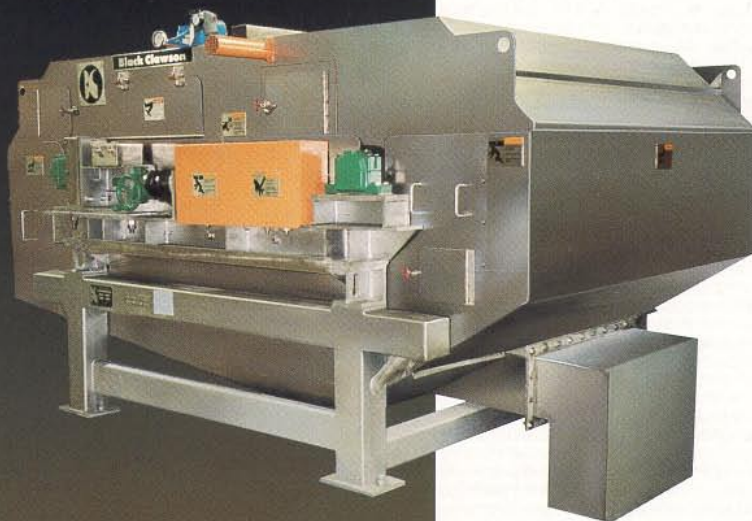
Excellence In
Pulp Washing and Thickening
Technology



DNT™ High Speed Washer/Thickener

KADANT
BLACK CLAWSON

DNT Washer



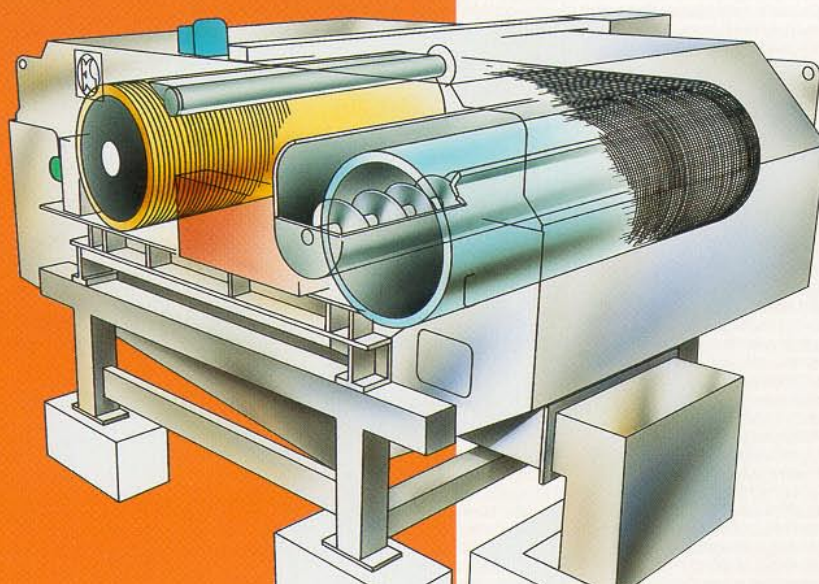
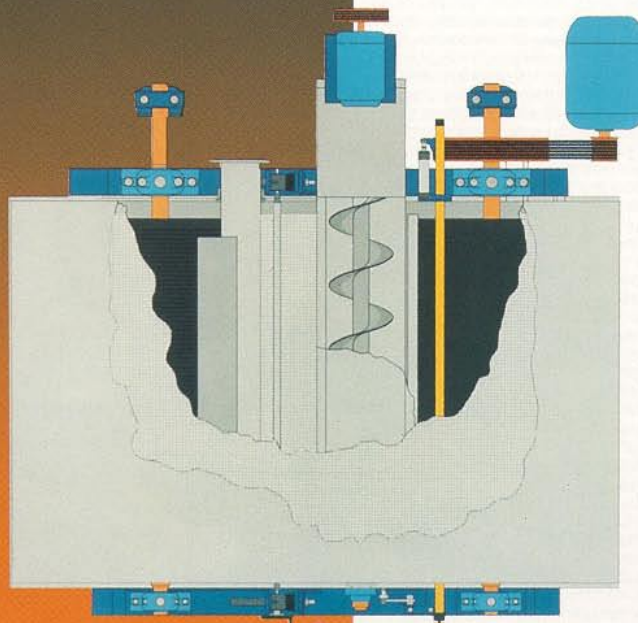
High Efficiency Ash

Features

- Compact—high tonnage in a small space
- Improved design—efficient washing at high basis weights
- Simple roll pattern—easy wire change
- Completely enclosed—cleaner and quieter operation
- Simple wire tracking and tension design
- No vacuum leg—reduced installation cost

Applications

- News-to-news washing
- Ledger-to-tissue washing
- Ledger-to-fine paper washing
- Thickening
- Fractionation



- Washes, thickens stock up to 100% consistency
- High tonnage throughput

And Dispersed Ink Removal

Description

The Black Clawson DNT Washer can wash and thicken stock up to 15% consistency. It is ideal for removing ink, ash and other contaminants from a variety of furnishes. High speed dewatering permits efficient removal of ink and ash from fiber, producing high tonnages of thoroughly washed stock in a compact space. The unit is cantilevered to use an endless wire, and is available in two sizes— the Model 100 and 200.

Controls

The DNT is supplied with an integral strain gauge and readout for wire tensioning.

Options

An optional electro-mechanical roll guiding mechanism is available for mechanized roll trimming, or for use with wires not having V-guides.

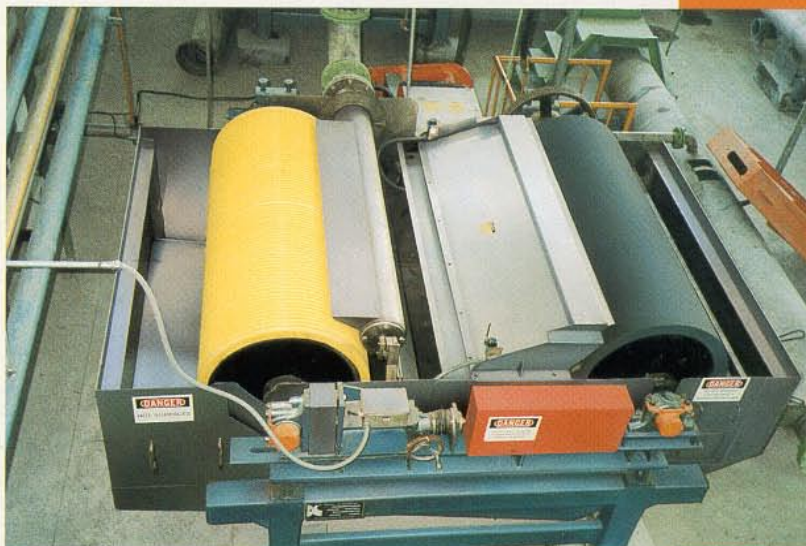
Operation

The DNT Washer is fed by a headbox, using synthetic wire as a dewatering medium. Stock is fed from the headbox into the first nip formed by a deeply grooved breast roll and the wire, resulting in high feed stock capacity and efficient washing. The stock is deposited on the wire and dewatered around the breast roll,

traveling to the couch roll, where it is dewatered a second time to produce highly washed and thickened stock up to 15% consistency. A doctor blade removes the thickened stock from the couch roll into a screw conveyor, which discharges the stock from the washer.

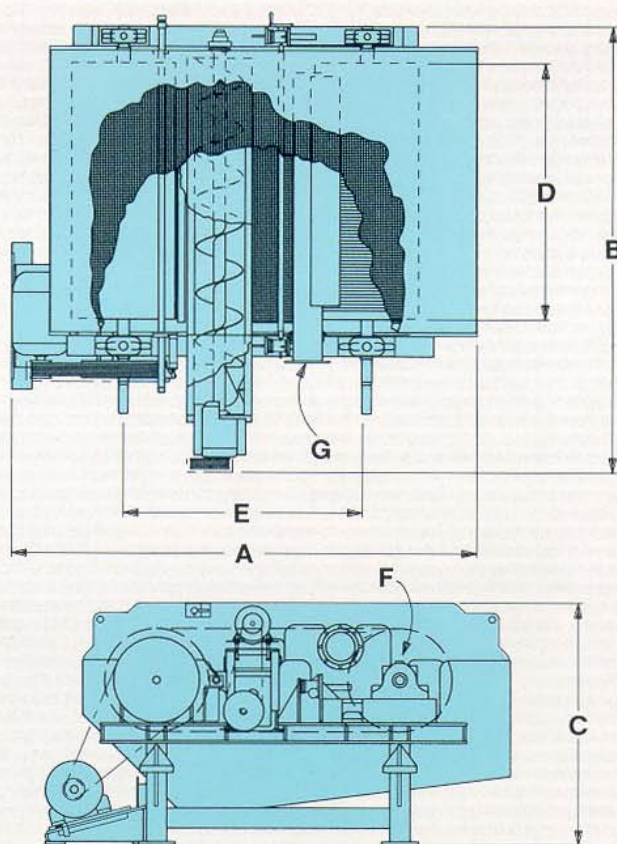
ASH REMOVAL EFFICIENCIES FOR VARIOUS TYPES OF THICKENING / WASHING EQUIPMENT

DEVICE	Feed Cons.	Accept Cons.	Ash Content			Hydr. Reject Rate	% Ash Removal
			Feed	Accept	White Water		
Sidehill Screen	0.9	3.8	7.8	3.8	33.8	80.0	66.7
Hydradenser	4.5	14.0	15.9	8.7	31.5	78.1	61.2
Press	12.0	29.2	8.4	8.1	62.5	51.6	19.6
DNT Washer	1.6	11.5	17.3	1.2	58.0	94.8	93.5



o 15% consistency • Efficient ink removal
rough-put in compact space

DNT Washer



MODEL									Operating Weight Empty		Operating Weight Full		Power Required
									lb.	kg	lb.	kg	
100	in.	A	B	C	D	E	F	G					
	mm	140	104	72	42	72	30	8	6000	2700	10000	4545	40hp
		3556	2642	1829	1067	1829	762	203					
200	in.	A	B	C	D	E	F	G					
	mm	140	138	72	76	72	30	8	8600	3910	12000	5455	75hp
		3556	3505	1829	1930	1829	762	203					

GENERAL DIMENSIONS — NOT CERTIFIED
FOR CONSTRUCTION OR INSTALLATION

KADANT
BLACK CLAWSON

AN ACCENT ON INNOVATION

7312 Central Parke Boulevard, Mason, OH 45040 USA 513-229-8100 Fax 513-229-8194 www.kadantbc.com