

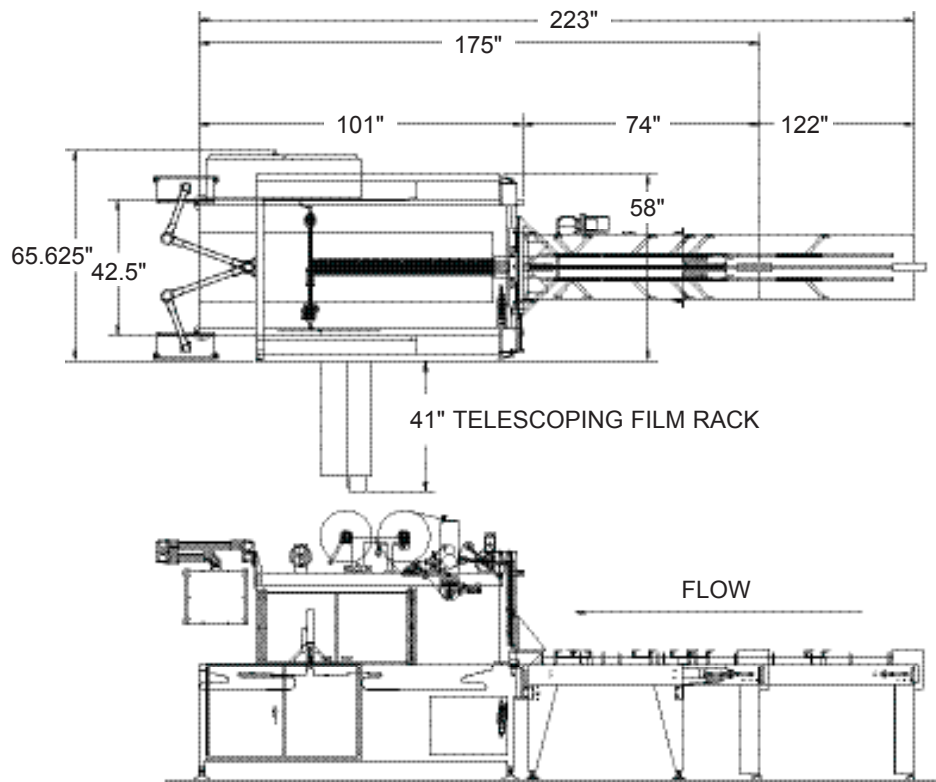


MACHINE FEATURES

- Heavy-duty rugged construction designed for high durability and around-the-clock operation
- Laser cut and CNC machined components for maximum precision
- Baked on powder coat finish provides a durable scratch resistant surface and prevents corrosion
- Static lap seal
- Dual-axis reciprocating end-seal
- Servo driven seal carriage and seal head
- 24" wide seal bar, with 10" high end seal opening
- Horizontal/vertical sealing capability
- Standard 6' flighted infeed conveyor
- Guards and control box doors are electrically interlocked
- Allen-Bradley® CompactLogix PLC
- Allen-Bradley® Kinetix servo drives and Allen-Bradley® servo motors
- Allen-Bradley® Panel View touchscreen interface, message display and self-diagnostics
- NEMA 12 electrical cabinet and controls
- Central point lubrication simplifies preventive maintenance
- Low film alert warns that a film changeover will soon be necessary

APPLICATIONS

- Plates
- Mailers
- Cosmetics
- Games
- Hardware
- Light bulbs
- Oil filters
- Pharmaceuticals
- Software
- CDs/DVD's
- Paper products
- Boxes
- Trays
- Multipacks



Right hand model with optional control panel shown

OPTIONS

- Stainless-steel construction
- Static/thermal bottom overlap sealing for polyolefin film
- Casters for machine portability
- Double roll film rack
- UL / CSA approved electrical cabinet
- Stack light and horn
- Film print registration
- Extra film forming plows
- Low product detection
- Hole punch
- Shrink tunnel
- Available with variety of infeeds including:
 - lug infeeds in 6', 10', 15', 20' lengths
 - dual pacing belt infeed
 - flight bar infeeds in 10' and 20' lengths

SPECIFICATIONS

Speed

- Up to 140 packages per minute
- Up to 140 feet per minute

Power Requirements

Electrical

- 460VAC, 3Ph, 60Hz, 44A
- Other voltages available on request

Pneumatic

- Pneumatic: 80 psi, 33 CFM (depending on options)

Product Range*

- Width: 2" to 22"
- Length: 5" to infinite
- Height: 1/4" to 10"

* Package maximums cannot occur together.

Film

- Max. film width: 46" single-wound
- Film type: polyolefin, polyethylene and PVC
- Clear or printed



Plow for Fast Tool-Less Changeovers



Horizontal Sealing



Vertical Sealing for Tall Product