



The SEAL® 62 Base laminator represents SEAL's latest offering to the rapidly growing digital display market. Ideal for mounting and laminating pressure-sensitive graphics up to 61", this machine represents a flexible package at an affordable price - without compromising its functionality.

The SEAL 62 Base is a pressure-sensitive machine with heat assist on the top roller that ensures superb results with a wide range of materials. Whatever the experience level of the operator, the SEAL 62 Base is easy-to-use, and will deliver genuine flexibility and high performance levels for the small to medium sized user.

Having great capability delivered at an

affordable price, the 62 Base is ideal for sign-makers. It provides the means for these users to finish their images and create more applications, which equals generating greater profitability. This laminator is also suitable for small to medium display based businesses who want to expand their range of applications. With the lower unwind/take-up option, you can encapsulate with pressure-sensitive films.

The SEAL 62 Base is ideal for producing a wide variety of display graphics

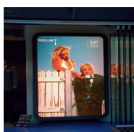
Rigid Indoor Displays



Rigid Outdoor Displays



Backlit Displays



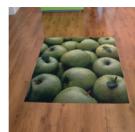
Pop-Up Displays



Roll-Up Displays



Floor Graphics



The SEAL 62 Base provides the following features:

Optimum performance

- 61" working width to handle a wide range of media
- Adjustable pressure and speed settings for maximum versatility
- 2" nip opening to cover a wide range of substrates including road signs with the use of a sled
- Heat assisted top roller for superb lamination performance
- Maximum operating speed of 16.4'/minute
- Manual nip adjustment for precise operation
- Robust, free standing design
- Optional roll-to-roll for creating vehicle graphics

Ease of use

- Ergonomic control panel for ease of use
- Auto-grip shafts for user friendly webbing
- Swing-up feed table to facilitate easy set up
- Optional roll trough, image guide and leveling feet

Safety

- Foot switch for hands free operation
- Self checking safety eyes for increased operator safety
- CE certified

SEAL® 62 Base

Technical Specifications

Maximum Working Width	61" (1575 mm)
Maximum Speed	16.4' /min. (5 m/min.)
Maximum Substrate Thickness	2" (50 mm)
Maximum Roller Temperature	104°F (40°C)
Roller Heating	Heat assisted top roller
Maximum Roll Weight	
Unwind	85 lbs (38.5 kg)
Take Up	35 lbs (15.9 kg)
Width	82" (2090 mm)
Height	52" (1326 mm)
Depth (excl. table)	19" (483 mm)
Depth (incl. in-feed table)	23" (590 mm)
Working Height	35.5" (900 mm)
Net Weight	530lbs. (240 kg)
Shipping Dimensions	
Width	86" (2184 mm)
Height	61" (1500 mm)
Depth	30" (762 mm)
Shipping Weight	661 lbs. (300 kg)
Electrical Requirements	115 VAC 50/60 Hz, 15A NEMA 5-20 plug
SEAL 62 Base Part Number	
115 VAC	64338A
230 VAC Europe	64339A
Optional Equipment Part Numbers	
Roll Trough	64614A
Autogrip Take Up	64621
Rear Power Take Up	64623
Leveling Feet (Set of 4)	5406A
Image Guide	64625A

Ergonomic control panel for ease of use.



Auto-grip shafts for user friendly webbing.



SEAL
7091 Troy Hill Drive
Suite B
Elkridge, MD 21075
U.S.A.
Tel: 800-257-7325
Fax: 800-966-4554

340191/04/2015

SEAL® is a registered trademark of ACCO BRANDS



Contact your local distributor:

www.sealgraphics.com