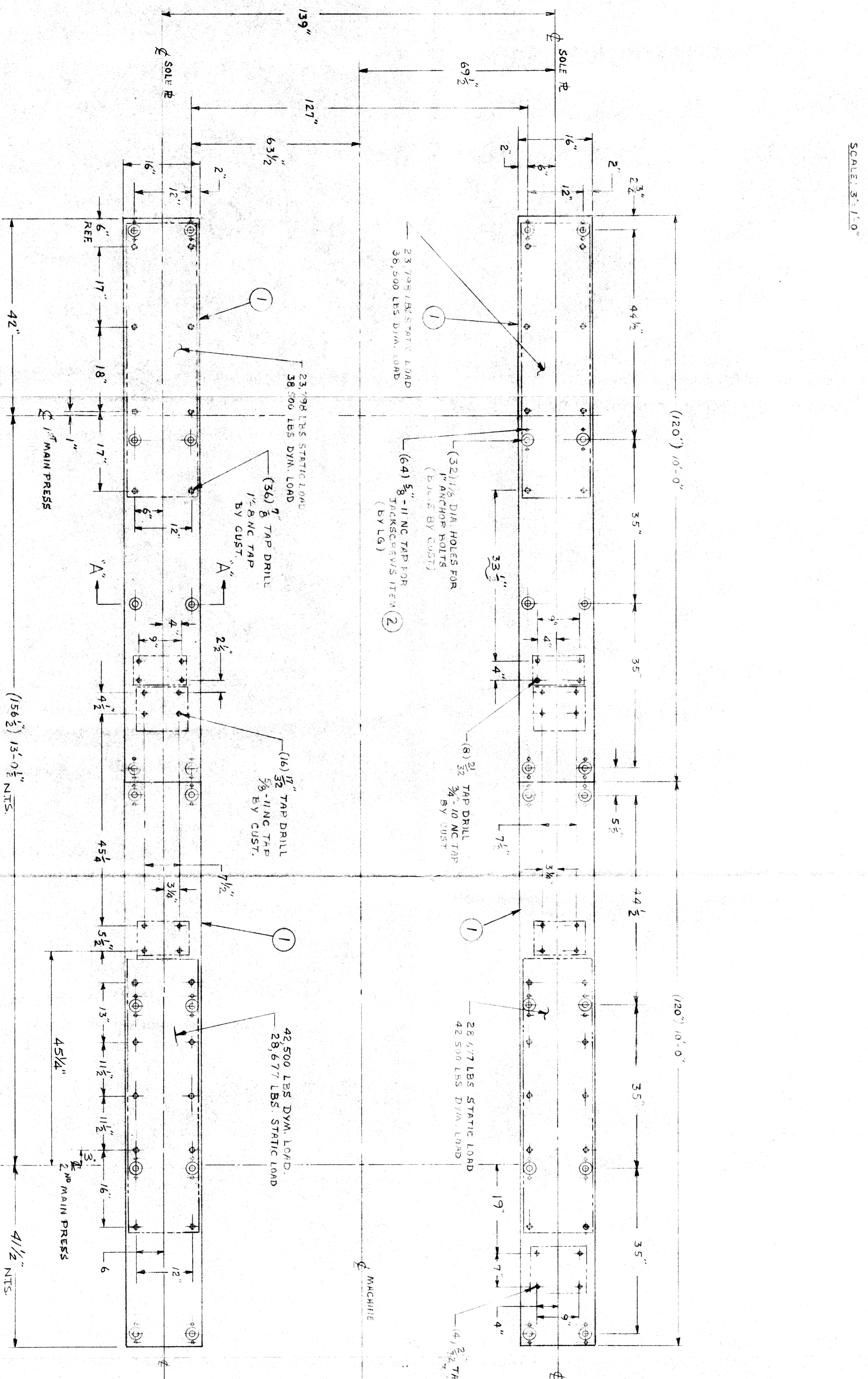
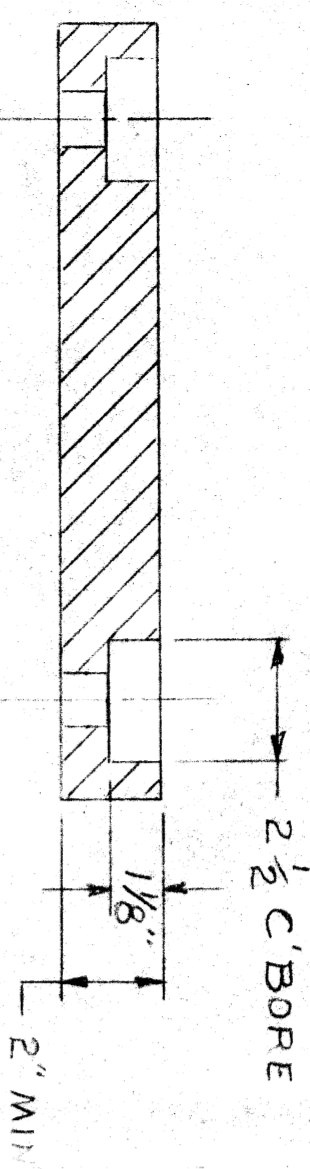


REV.	PROJ.	SOFT
Q		

REV.	ISSUED BY	BM-D-9264
Q	SHEET 1 OF 1	
PROJ.	DRAWING NO.	C-959-28
ACCT.	S. P.O.	
VENDOR	VENDOR	
DESCRIPTION	SOLE PLATE 16' x 120'	CAST IRON
ITEM NO.	QUAN.	TOTAL
1	4	
2	64	
SOLE PLATE 16' x 120'		
SO HD SET SCR 3/4" - 11/16" x 6 LG		STL



HEAVIEST CRANE LOAD
PRESS ROLL WITH BEAR.
ASSEMBLIES, 12000 #

FOR ASSY. SEE DWG.

MACHINING TOLERANCES UNLESS OTHERWISE SPECIFIED	
FRACTIONAL DIMS ± 1/32"	ANGLES ± 1/2°
DEC. DIMS ± .001"	FINISH
REVISIONS	BREAKALL SHARP EDGES
SCALE: 1" = 1'-0"	DWN. BY: <i>ML</i>
DATE: 3-4-86	DRAWING NO.
FIN. WT. 5992	CHK'D BY: <i>MS</i>
REV.	REV.
Q	Q

NO. REV.	TITLE	FOUNDATION PLAN
1	CUSTOMER	
2	DESCRIPTION	
3	ISSUED BY	
4	SHEET 1 OF 1	
5	DRAWING NO.	BM-D-9264
6	S. P.O.	
7	VENDOR	

SO. NO.	NO. REV.	TITLE	FOUNDATION PLAN
1	1	CUSTOMER	
2	2	DESCRIPTION	
3	3	ISSUED BY	
4	4	SHEET 1 OF 1	
5	5	DRAWING NO.	BM-D-9264
6	6	S. P.O.	
7	7	VENDOR	

THIS DRAWING AND ITS CONTENTS ARE THE PROPERTY OF LG INDUSTRIES INC. AND MAY NOT BE REPRODUCED WITHOUT PERMISSION

LG INDUSTRIES INC. COATESVILLE PA 19320 USA

SEP 24 1986