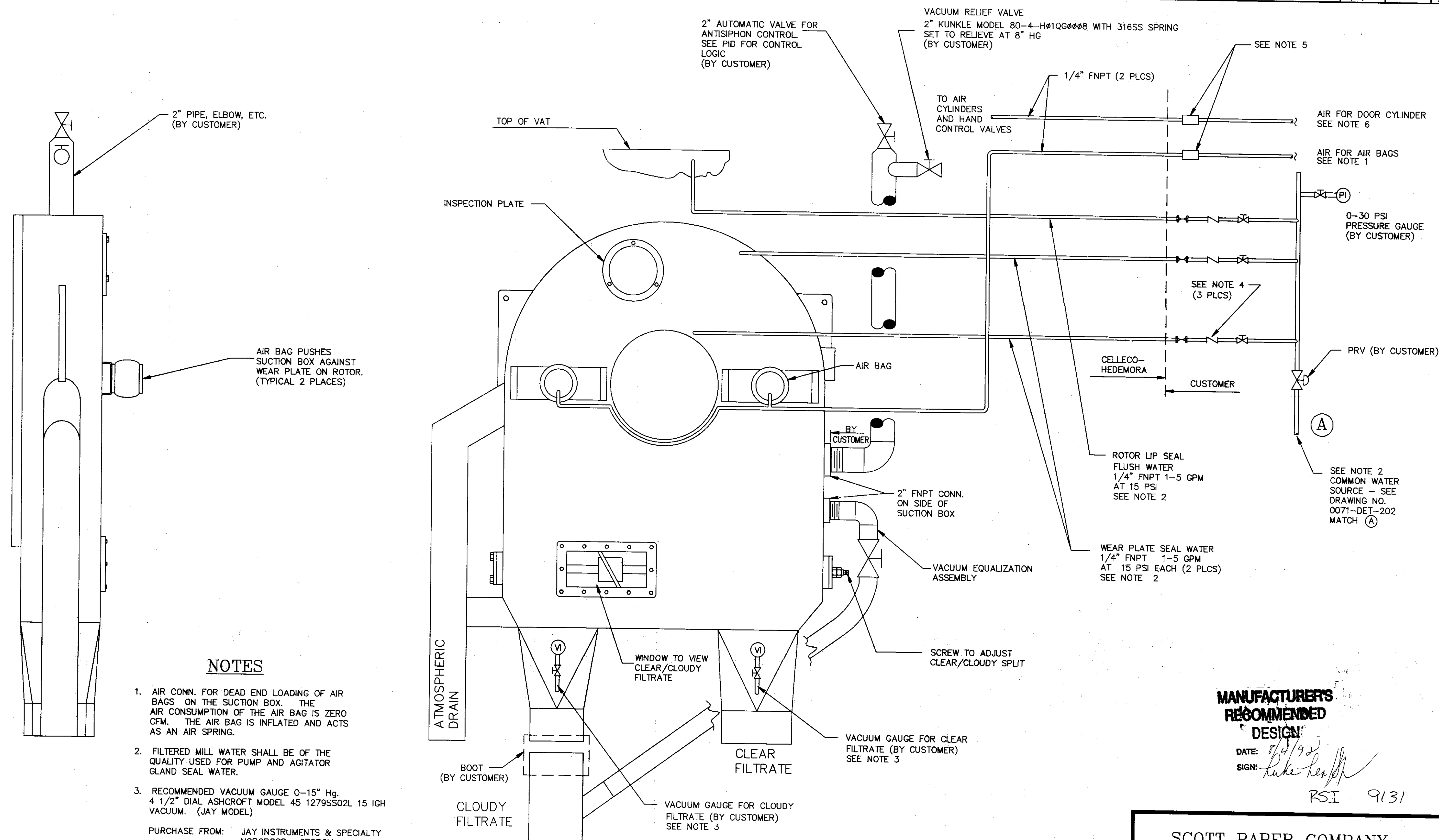


Revision No.	Revision	Date	Revised	Approved
0	RECOMMENDED DESIGN	4/2/92	R.W.	
1	ENGINEERING CHANGES	8/3/92	R.W.	



### NOTES

- AIR CONN. FOR DEAD END LOADING OF AIR BAGS ON THE SUCTION BOX. THE AIR CONSUMPTION OF THE AIR BAG IS ZERO CFM. THE AIR BAG IS INFLATED AND ACTS AS AN AIR SPRING.
- FILTERED MILL WATER SHALL BE OF THE QUALITY USED FOR PUMP AND AGITATOR GLAND SEAL WATER.
- RECOMMENDED VACUUM GAUGE 0-15" Hg. 4 1/2" DIAL ASHCROFT MODEL 45 1279SS02L 15 IGH VACUUM. (JAY MODEL)

PURCHASE FROM: JAY INSTRUMENTS & SPECIALTY  
NORCROSS, GEORGIA  
(404) 449-4400  
ATTN: MARY POTTER OR  
TED WILSON

ALTERNATE VACUUM GAUGE IS STANDARD 0-30" Hg  
VACUUM GAUGE PER CUSTOMER'S SPECIFICATIONS.  
1/4" PIPE, ELBOW, BALL VALVE, ETC. BY CUSTOMER.

- 3/8" I.D. TUBING, FLOW INDICATOR, BALL VALVE, 3/8" X 1/4" REDUCER (BY CUSTOMER) TYPICAL 3 PLACES.

### NOTES (CONTINUED)

- SEPARATE FILTER, REGULATOR, LUBRICATOR TO BE SUPPLIED FOR EACH CONNECTION BY CUSTOMER. AIR TO THE AIR BAGS REQUIRE A FILTER AND REGULATOR, BUT NO LUBRICATOR.
- AIR CONNECTION FOR HOOD DOOR AIR CYLINDERS 60 PSI DESIGN, 90 PSI MAXIMUM AIR CONSUMPTION 150 CFM PER DOOR (2 CYLINDERS) ASSUMING FIVE (5) SECONDS TO OPEN.

**MANUFACTURER'S  
RECOMMENDED  
DESIGN**

DATE: 8/4/92

SIGN: Luke Lerch

RSI 9131

**SCOTT PAPER COMPANY**  
**S.D. WARREN DIVISION**  
**MOBILE, ALABAMA**  
NO.4 PAPER MACHINE SAVEALL

CDP2-A-0071		Equipment No.	
Order number			
Drawn	Scale	QTY. ORDERED	
R.W.	N/A		
Approved	Date	FILE	
	3/26/92	0071	
CDP SUCTION BOX		Customer P.O. No.	
Model No. 3ML2-16(15)		M041331-E-00100	
Pitch 300		Drawing No.	
REF. DWG. NO. SUCTION		0071-DET-204	
		REV. 1	

This document and its contents are the property of Cellico AB and must not be copied, reproduced, transmitted or disclosed to any third party without the consent of Cellico AB. Contravention will be prosecuted.