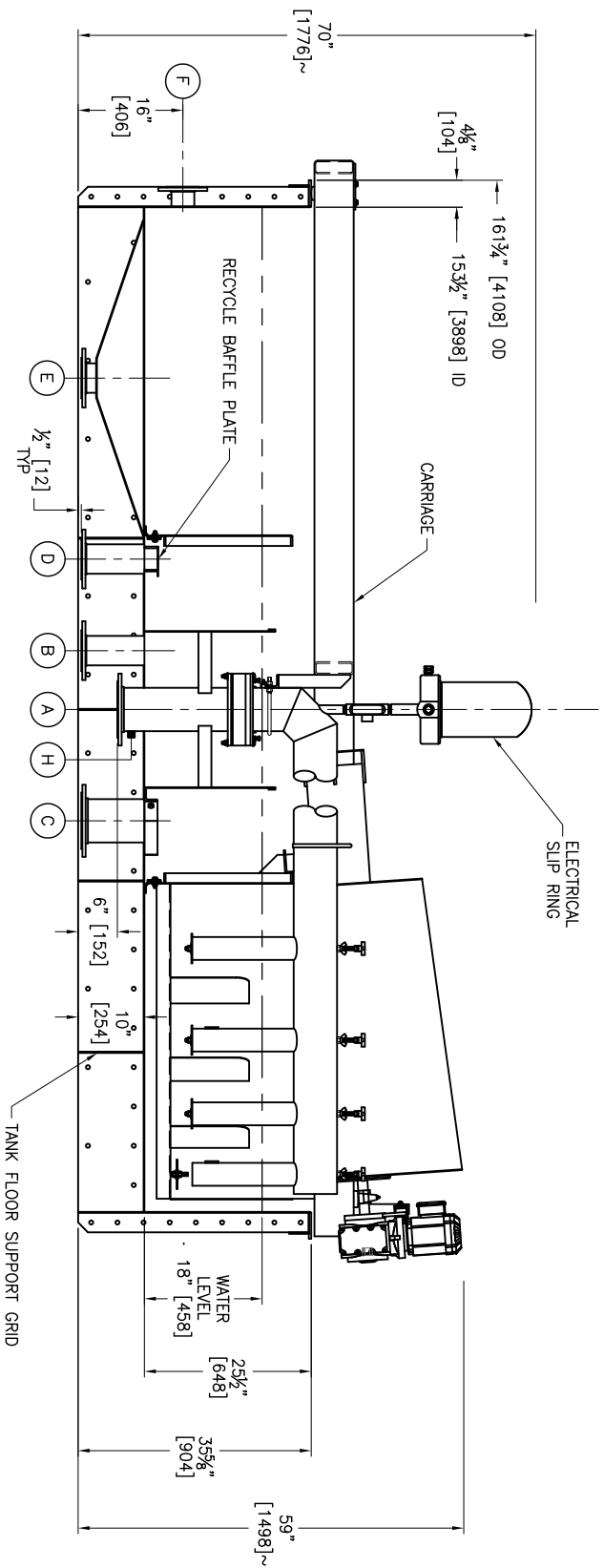
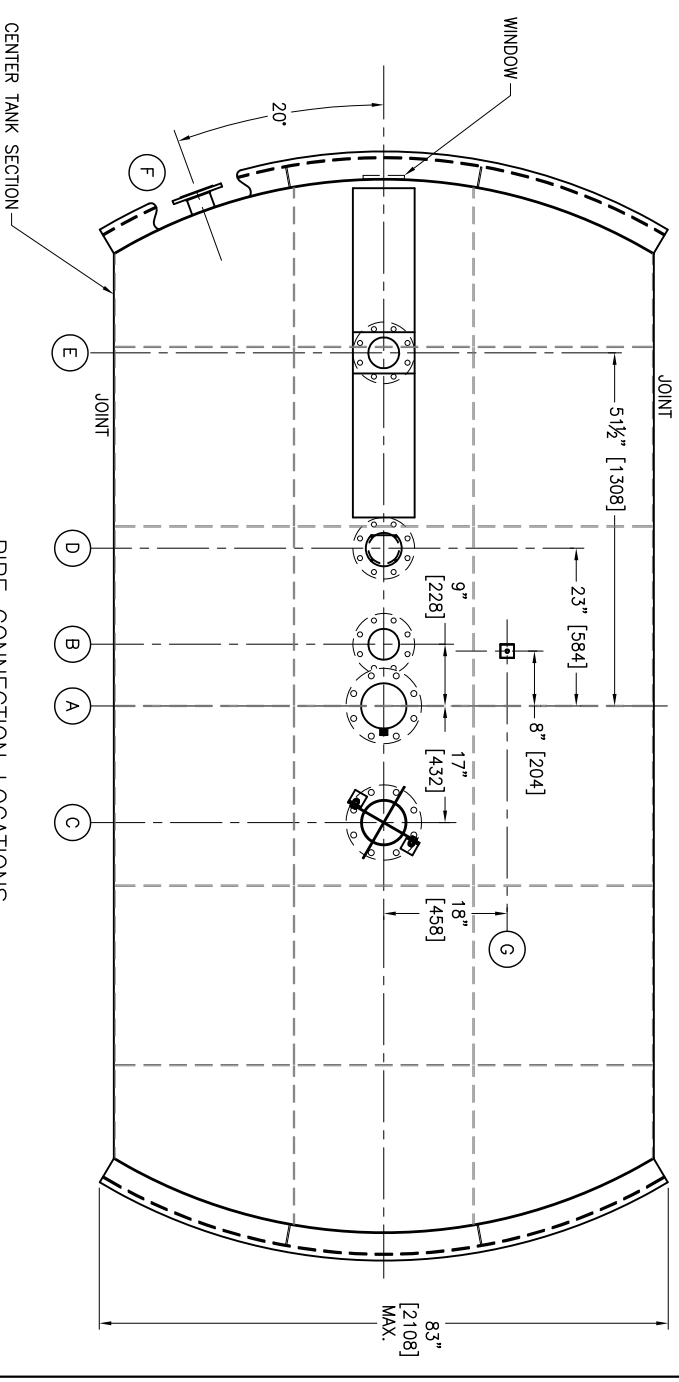


TOP VIEW



SECTION VIEW



ITEM	DESCRIPTION	CONNECTION
A	UNCLARIFIED WATER INLET	6" - *FLANGE
B	FLOATED SLUDGE OUTLET	4" - *FLANGE
C	CLARIFIED WATER OUTLET	6" - *FLANGE
D	CLARIFIED RECYCLE OUTLET	4" - *FLANGE
E	SEDIMENT PURGE OUTLET	4" - *FLANGE
F	LEVEL SENSOR CONNECTION	3" - *FLANGE
G	ADT BLEEDOFF CONNECTION	1/2" - FNPT
H	CHEMICAL CONNECTION	1/2" - FNPT

\*150 LB. FLANGE DRILLING DIMENSIONS

SPC-12 EQUIPMENT AND WATER WEIGHTS:  
 OPERATING: 17,500 LBS [8,000 KG]  
 FLOODED: 22,000 LBS [10,000 KG]

SPC-12 FABRICATION MATERIALS:  
 304LSS: SPC TANK WALL, TANK WALL  
 OUTER RIBS, WHEEL RIM, FLOOR, INTERNAL  
 TANKS, PIPE AND FACE RINGS, ROTATING  
 CARRIAGE FRAME, FLOOR SUPPORT GRID,  
 304SS: WETTED HARDWARE,  
 PLATED: NON-WETTED HARDWARE,  
 GALVANIZED: BACK-UP FLANGES,  
 NEOPRENE: WIPERS, SEALS & GASKETS.

**PRELIMINARY**  
 DO NOT USE FOR CONSTRUCTION.  
 EQUIPMENT DETAILS AND DIMENSIONS ARE  
 SUBJECT TO CHANGE WITHOUT NOTICE.

REF: SPC120L-2014-02, 09/22/14

**Krofta Technologies LLC**  
 PO Box 7, 401 South Street, Dalton, MA 01227  
 Tel: 413.236.5634 Fax: 413.236.6917 info@krofta.com

NAME: SUPRACELL SPC 12

DATE: 06/12/17 SCALE: - DRAWN BY: PLN DESIGNED BY: CHECKED BY: APPROVED BY:

TITLE: DIMENSIONS & PIPE LOCATIONS DRAWING NUMBER: SPC12-01-01 REV:

PROPERTY OF KROFTA, DO NOT COPY OR GIVE TO OTHERS WITHOUT PERMISSION. SUBJECT TO RETURN UPON DEMAND.