

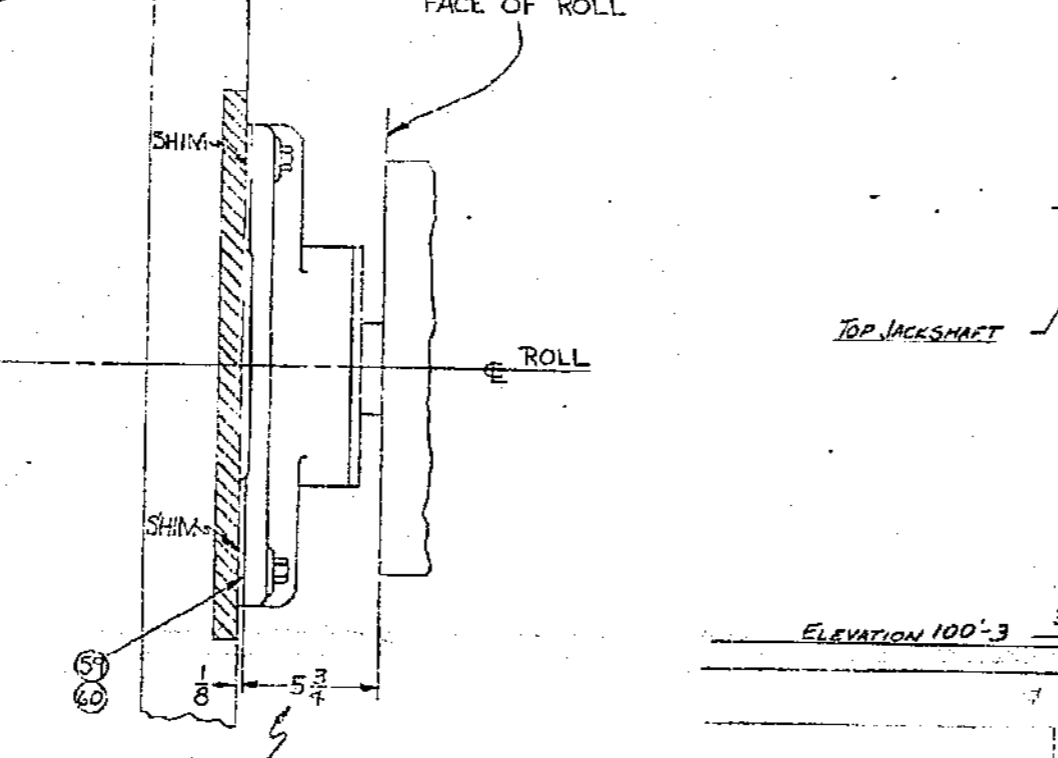
BILL OF MATERIAL

ITEM NO.	SYMBOL	DESCRIPTION	SUB SECT	NO. REQ'D - SECT.						TOTAL NO. REQ'D
				1	2	3	4	5	6	
1	1PL216	PATENT PLATE								1
2	C.I. 4D10282J-8	DRYER POST	DFF(8)	(7)	(5)					20
3	ST. D44215	7/10 TAPER PIN 3/8 x 6	DFF(14)	(14)	(10)					40
4	ST.	1 1/2 x 4 1/2 C.S. & HVY. W.	DFF(32)	(20)	(20)					80
5	C.I. 4D9848P-14	TOP FRAME TYR	DFF(5)	(5)	(3)					13
6	ST.	7/10 TAPER PIN 3 1/2 LG.	DFF(14)	(12)	(8)					34
7	ST.	1/8 x 5 B.T.S. & (2) HVY. W.	DFF(20)	(24)	(16)					68
8	C.I. 4D9848Q-15	TOP FRAME @ FEENEY	DFF(2)	(1)	(1)					4
9	C.I. 4D9847C-3	TOP END FRAME	DFF(1)	(1)	(1)					3
10	C.I. 4D9846C-3	TOP END FRAME	DFF(1)	(1)	(1)					3
11	ST.	1/2 x 4 B.T.S. & (2) HVY. W.	DFF(8)	(7)	(5)					20
12	C.I. 2D11501	TOP BACK RAIL TYR	DFF(4)	(4)	(2)					10
13	C.I. 2D11501A-1	TOP BACK RAIL @ FEENEY	DFF(1)	-	-					1
14	C.I. 2D11501B-2	TOP BACK RAIL END	DFF(1)	(1)	(1)					3
15	C.I. 2D11501C-3	TOP BACK RAIL END	DFF(1)	(1)	(1)					3
16	ST. D5362S	DOWEL	DFF(14)	(12)	(8)					34
17	ST.	3/8 x 2 1/2 C.S. & HVY. W.	DFF(56)	(48)	(32)					136
18		C-92 NEOPRENE CEMENT	DFF(7)							QUARTS TOTAL
19	C.I. 2D10268N-12	DOCTOR SUPT. POST	DFF(1)	(1)	(5)					7
20	C.I. 2D10302V-15	DOCTOR SUPT. ARCH	DFF(1)	(1)	(5)					7
21	ST.	3/8 x 2 1/2 C.S. & HVY. W.	DFF(10)	(10)	(50)					70
22	ST. D6044S	3/8 T.F. 3 LG. (THREADED)	DFF(20)	(18)	(30)					68
23	C.I. 1D10911J-11	GUARD RAIL BRACKET	DFF(7)	(6)	-					13
24	ST.	2 1/2 (2875 OD x .203 W) W.P. PIPE 3' 10 LG.	DFF(7)	(6)	-					13
25	ST.	1/4 x 4 LG. PIN	DFF(7)	(6)	-					13
26	ST.	1/2 x 2 LG. C.S. & HVY. W.	DFF(14)	(12)	-					26
27	C.I. 1D1014-1	TOP POST (FR. & BK.)	DFF(4)	(4)	(4)					12
28	ST. D3400S	3 T.P. 3 LG. (THREADED)	DFF(8)	(8)	(8)					24
29	ST.	1 x 3 1/2 C.S. & HVY. W.	DFF(2)	(2)	(12)					36
30	C.I. 1D10750H-8	TOP RAIL (FR. & BK.)	DFF	(2)	(2)					4
31	C.I. 1D10750DQ-11B	TOP RAIL (FR. & BK.)	DFF(2)	-	-					2
32	ST.	5/8 x 3 LG. T.P.	DFF(46)	(50)	(64)					142
33	ST.	5/8 x 3 1/2 B.T.S. & (2) HVY. W.	DFF(8)	(8)	(8)					24
34	ST. 1D2028-36	CROSS TIE	DFF(1)	(1)	(1)					3
35	ST.	5/8 x 2 1/2 LG. B.T.S.	DFF(4)	(4)	(4)					12
36	ST.	5/8 x 3 1/2 C.S. & HVY. W.	DFF(4)	(4)	(4)					12
37	ST.	1 x 5 SQ. HD. B.T.S. & (2) HVY. W.	DFF(48)	(36)	(63)					112
38	ST.	1 x 3 1/2 C.S. & HVY. W.	DFF(48)	(36)	(28)					112
39	ST. W2062S	7/10 TAPER PIN - 4 LG. - 5/8 THD.	DFF(30)	(38)	(30)					118
40	C.I. 1D10750DW-11L	RAIL (STRETCHER)	DFF(4)	(4)	(2)					10
41	ST.	3/4 x 3 1/2 B.T.S. & (2) HVY. W.	DFF(14)	(16)	(14)					48
42	C.I. 1D10370D-4	AIR GUIDE BLOCK	DFF(1)	(1)	-					2
43	C.I. 1D9757F-6	HAND GUIDE BLOCK	DFF(1)	(1)	-					2
44	ST.	3/4 x 3 1/2 B.T.S. & (2) HVY. W.	DFF(10)	(10)	(10)					30
45	ST.	3/4 x 3 C.S. & HVY. W.	DFF(2)	(2)	(2)					6
46	MS 1D2549S-7	RAISE PLATE	DFF(1)	(1)	(1)					3
47	CRS D8292S	RAISE PLATE	DFF(2)	(2)	(2)					6
48	ST.	3/4 x 2 C.S. & HVY. W.	DFF(4)	(4)	(4)					12
49	ST.	3/4 x 4 B.T.S. & HVY. W.	DFF(2)	(2)	(2)					6
50	ST.	5/8 x 2 1/2 B.T.S.	DFF(4)	(4)	(4)					12
51		5/8 x 2 C.S.	DFF	(8)	-					8
52	DI-6536, TAB. #7	HAND GUIDE CONTROL (TOP)	DAG(1)	(1)	(1)					3
53	DI-6470, TAB. #5	HAND GUIDE CONTROL (BOTTOM)	DAG(1)	(1)	(1)					3
54		RC 40 LB. CHAIN WITH (6) CONN. LINKS								130 TOTAL
55		3 1/2 x 1 1/2 (2) HVY. W.		(2)	(2)					4
56	C.I. 1D10570EE-2S	RAISE BLOCK (A.G.)	DFF	-	(1)					1
57	C.I. 1D9757A9-51	RAISE BLOCK (H.G.)	DFF	-	(1)					1
58	CR. 1D9592S	COVER PLATE	DFF	(1)	(1)					(2)
59	M. 1858S	SHIM	DFF(4)	(6)	(8)					20
60	M. 1858S-1	SHIM	DFF(4)	(8)	(8)					20
61	M. 19723S	ADAPTER PLATE	DFF	-	(1)					1
62	S.	3/8 x 1 1/2 C.S.	DFF	-	(4)					4
63	RAIL (STRETCHER)	DFF	-	(2)						2
64	ROPE STRETCHER IDLER	DFF	(1)	(1)	(1)					3
65	FELT ROLL STAND	DFF	(2)	-	-					2

BILL OF MATERIAL

ITEM NO.	SYMBOL	DESCRIPTION	SUB SECT	NO. REQ'D - SECT.						TOTAL NO. REQ'D
				1	2	3	4	5	6	
66	C.I. 1D9757WW-42	RAISE BLOCK	DFF(2)	-	-					2
67	ST.	3/4 x 3 B.T.S. & HVY. W.	DFF(8)	-	-					8
68										
69										
70										
71										
72										
73										
74										
75										
76										
77										
78										
79										
80										

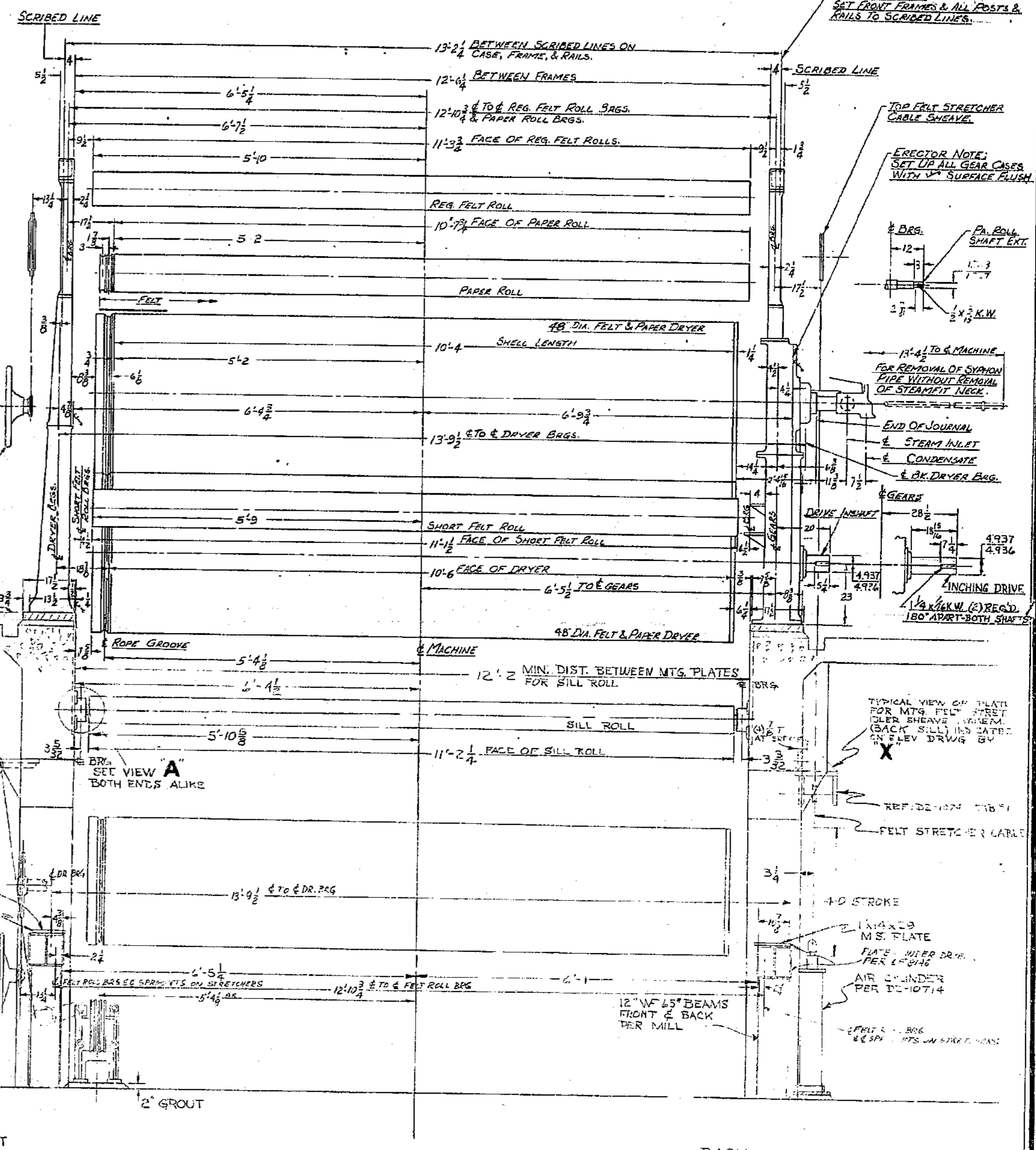
NOTE: ORDER DEPT. & ERECTOR. SEE 1-77-455 INST. FOR ORDERING & APPLYING.



VIEW A SCALE: 3" = 1'-0"

PARTIAL LIST OF DETAILS

SYMBOL	DESCRIPTION
MD3-DR-43 TAB. #1	PAPER & FELT DRYER
MD-DR-24 TAB. #13, #15	FRONT DRYER BRGS (PA. & FE. DRYERS)
MD-DR-12 TAB. #19	BACK FELT DRYER BRGS
MD-FR-103 ARR. B, C, D	ENCLOSED GEAR DRIVE
MD8-FE-108 TAB. #18	8" FELT ROLLS
MD3-FE-111 TAB. #1, #2, #3	10" FELT ROLLS
MD8-FE-123 SH. #3	FELT ROLL BRGS
MD3-SF-30 TAB. #5, #6	STEAMFIT ASSEM.
MD-ST-26 TAB. #8	STR. CROSS-SHAFT
MD-ST-6	AUTO STRETCHER CARRIAGE
D4-11161	ROPE SHEAVE MOUNTING
D2-10841, TAB. #4	SHEAVE IDLER (FELT STR.)
MD3-DR-43 TAB. #2	SWEAT DRYER
MD3-SD-2 TAB. #3, #4	SWEAT DRYER PIPING
MD3-PA-161, #18, #3 & 4	GL. COV. PA. ROLL



GAGE AT DRYERS LOOKING TOWARD WET END L.H. MACH. - 1700 F.P.M. - BOND & LEADER PAPER