





CHARGING AIR



STARTING AIR



LT - WATER



1 bar = 0,1 MPa ≈ 1 kp/cm²



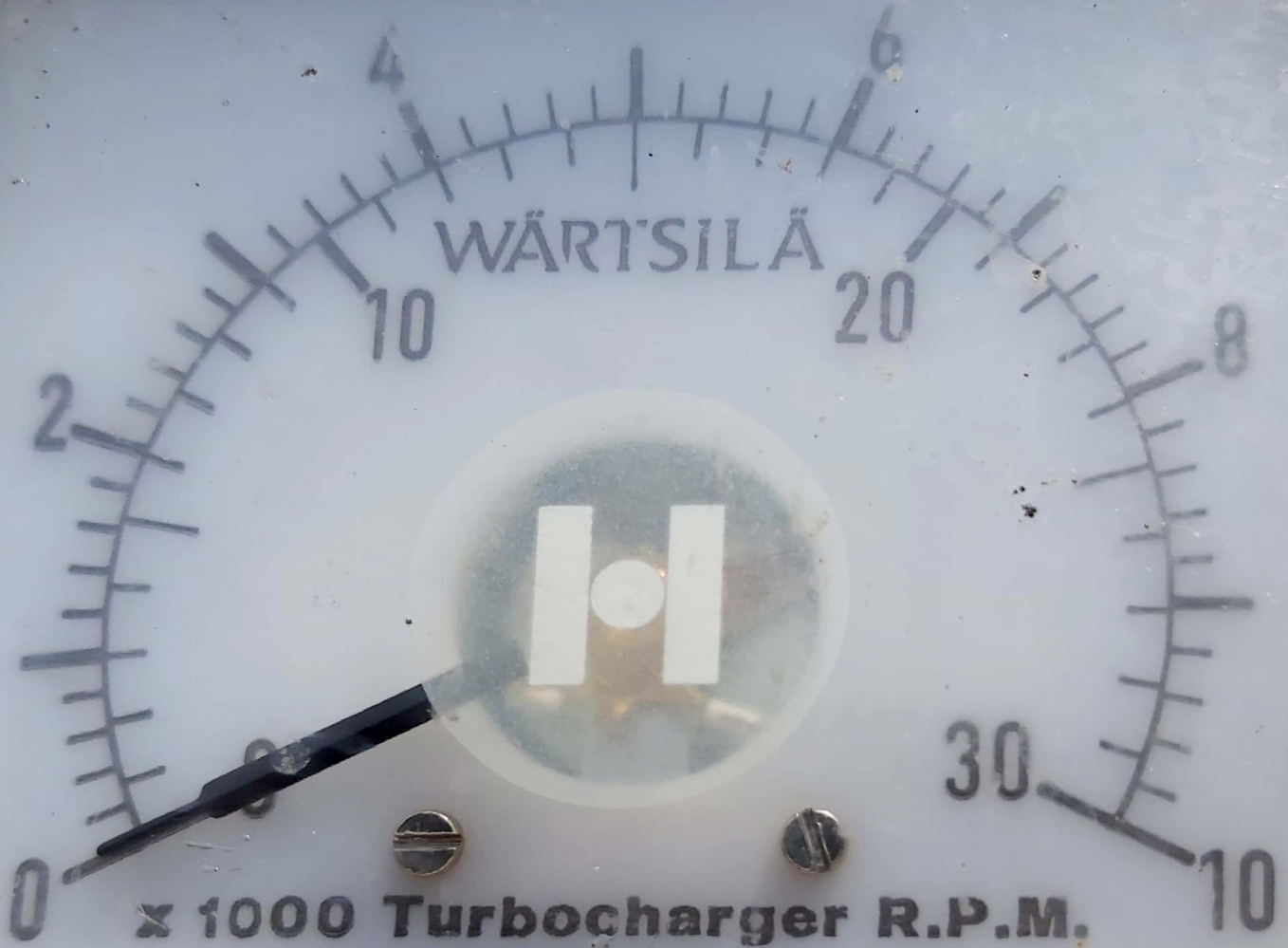
HT - WATER



FUEL



LUBRICATING OIL



x 1000 Turbocharger R.P.M.

x 100 Engine R.P.M.

0000740 h

15 102 T ☆



0000740 h

03-12



x 1000 Turbocharger R.P.M.
x 100 Engine R.P.M.

0000740 h

15 102 L ☆