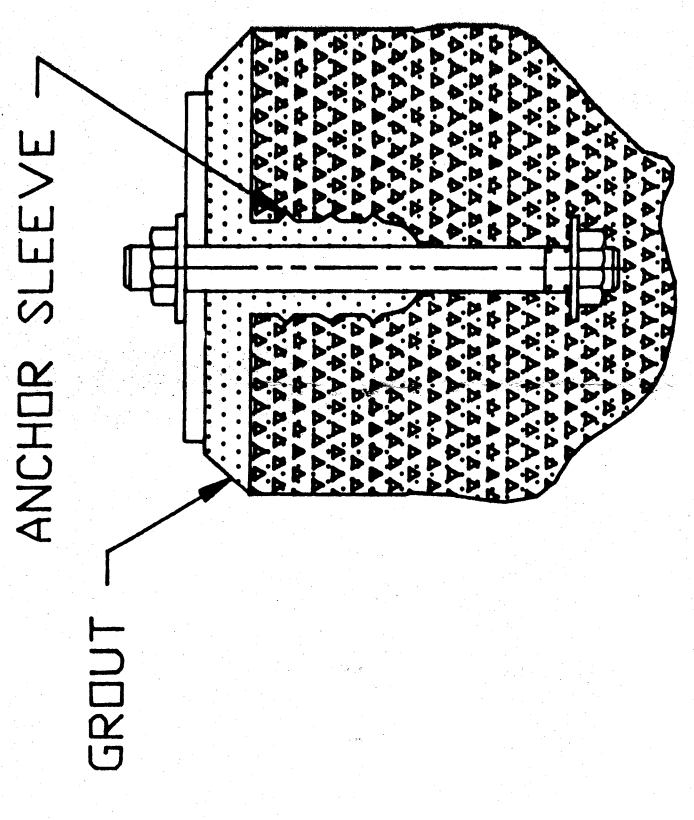
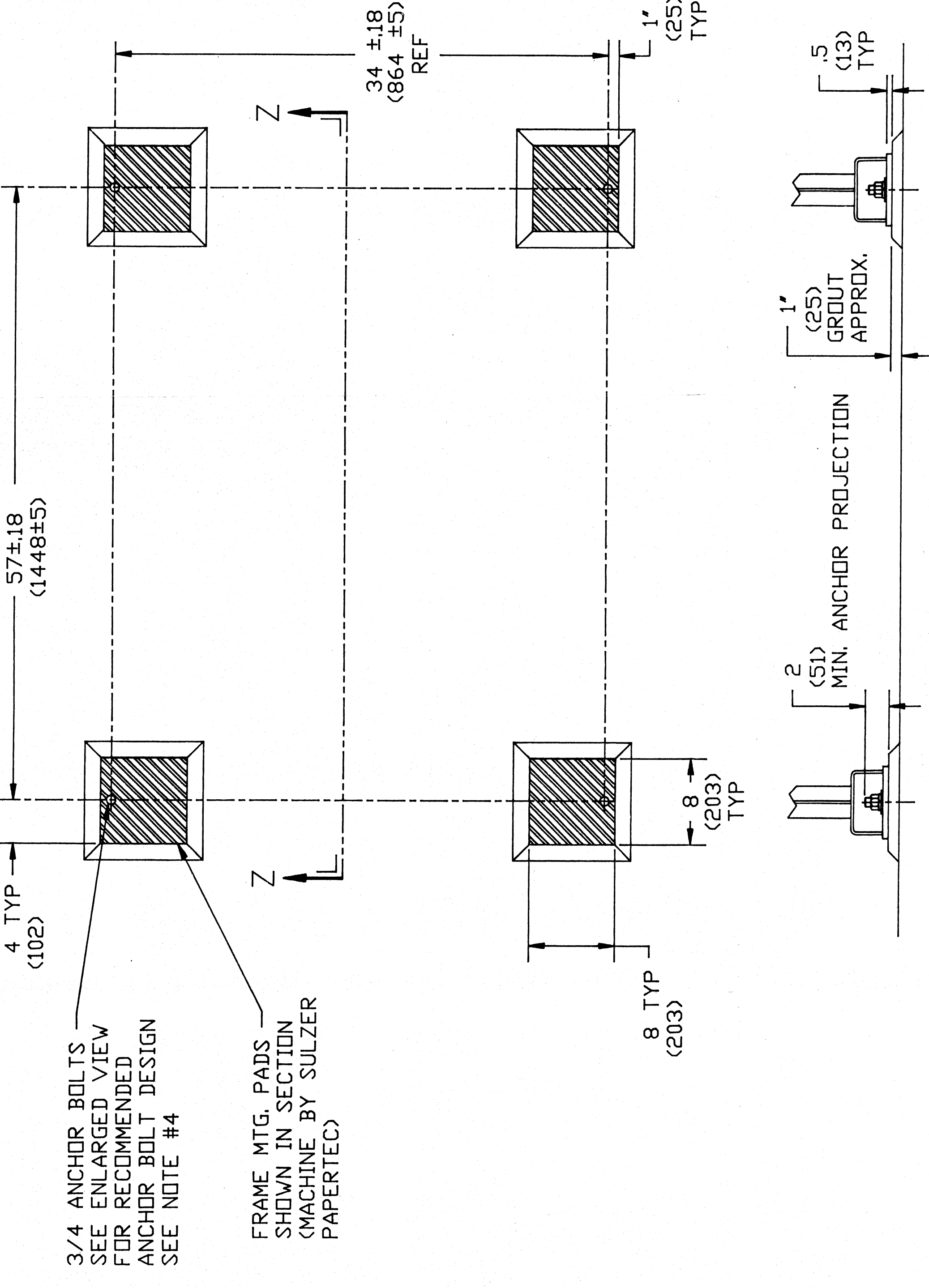


FOR ENGINEERING REFERENCE

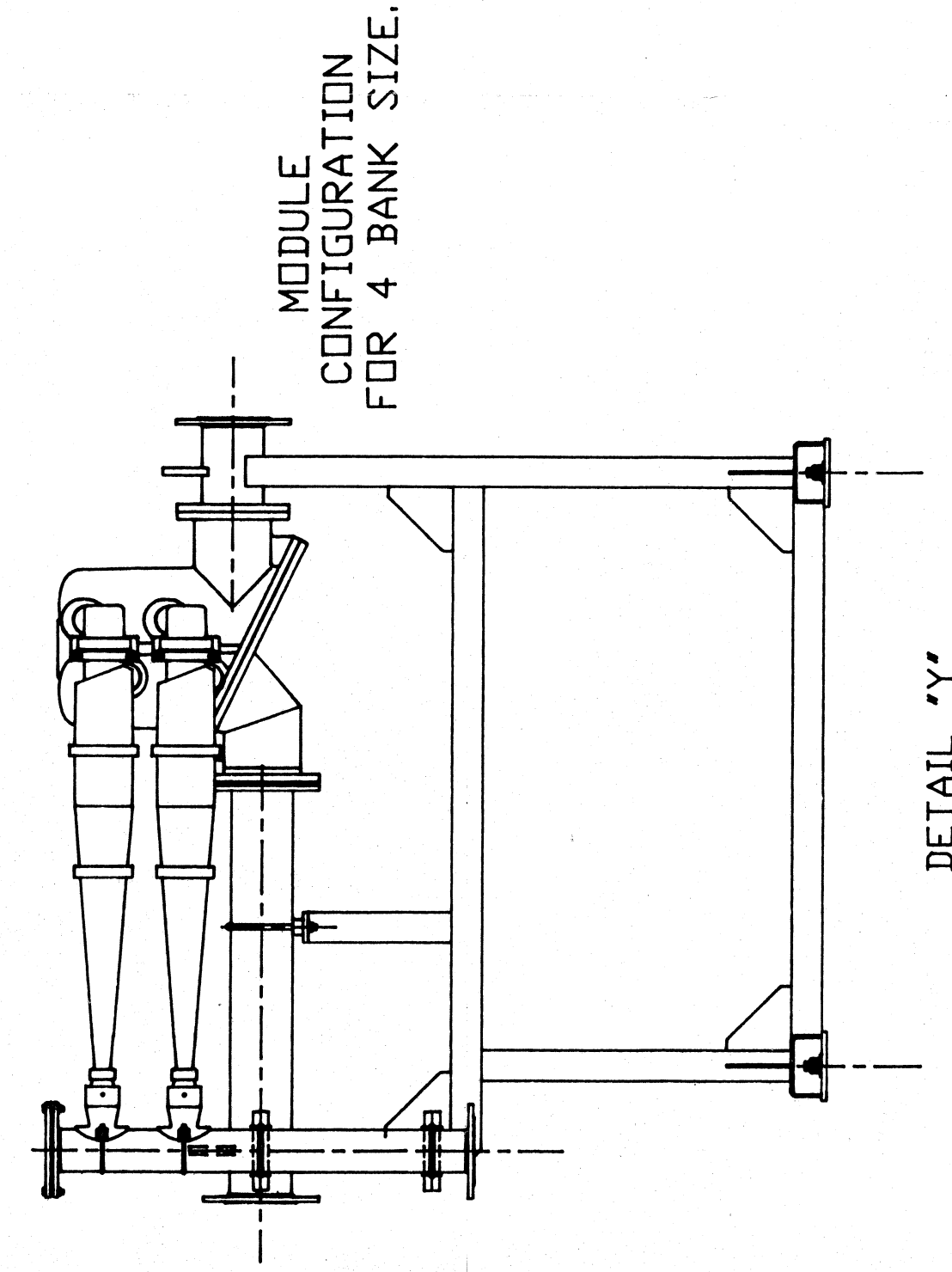
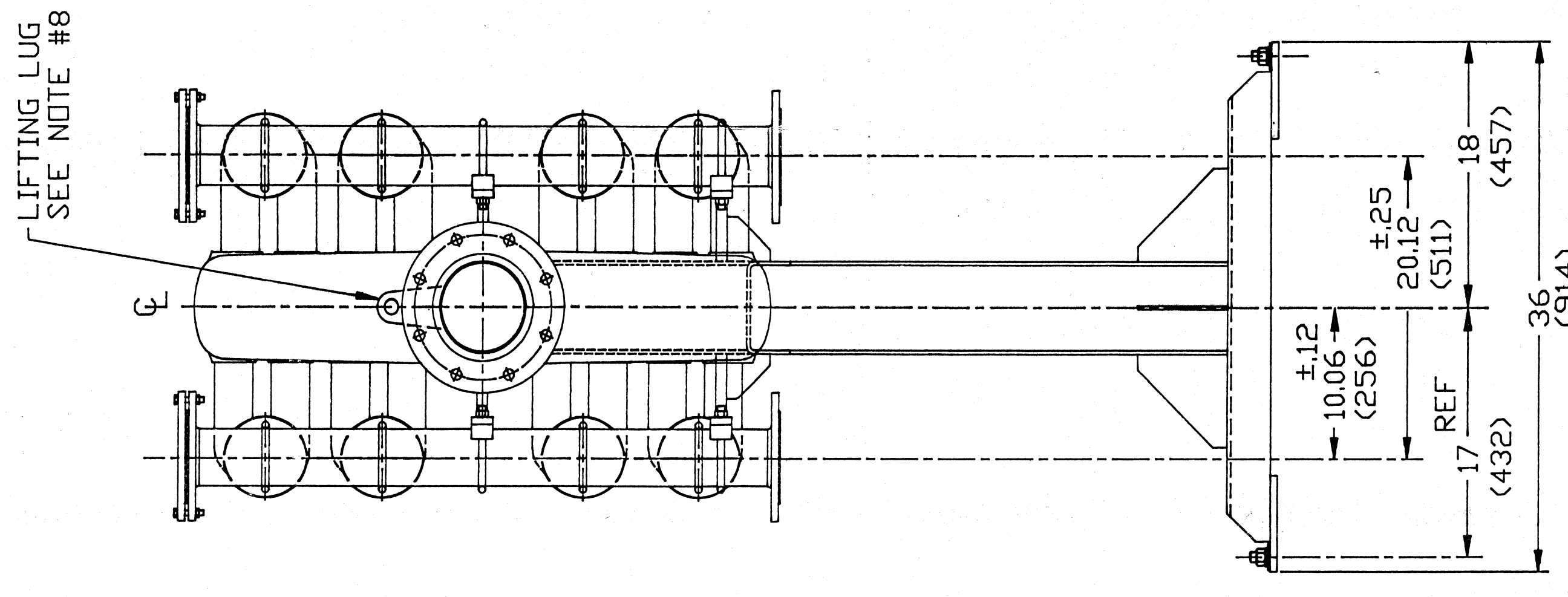
NOTICE
 SULZER PAPERTEC ASSUMES NO RESPONSIBILITY FOR DESIGN OF SUPPORTS, FOUNDATIONS, STRUCTURAL AND CONCRETE WORK OR ANY OTHER MATERIAL AND EQUIPMENT NOT SUPPLIED BY IT.



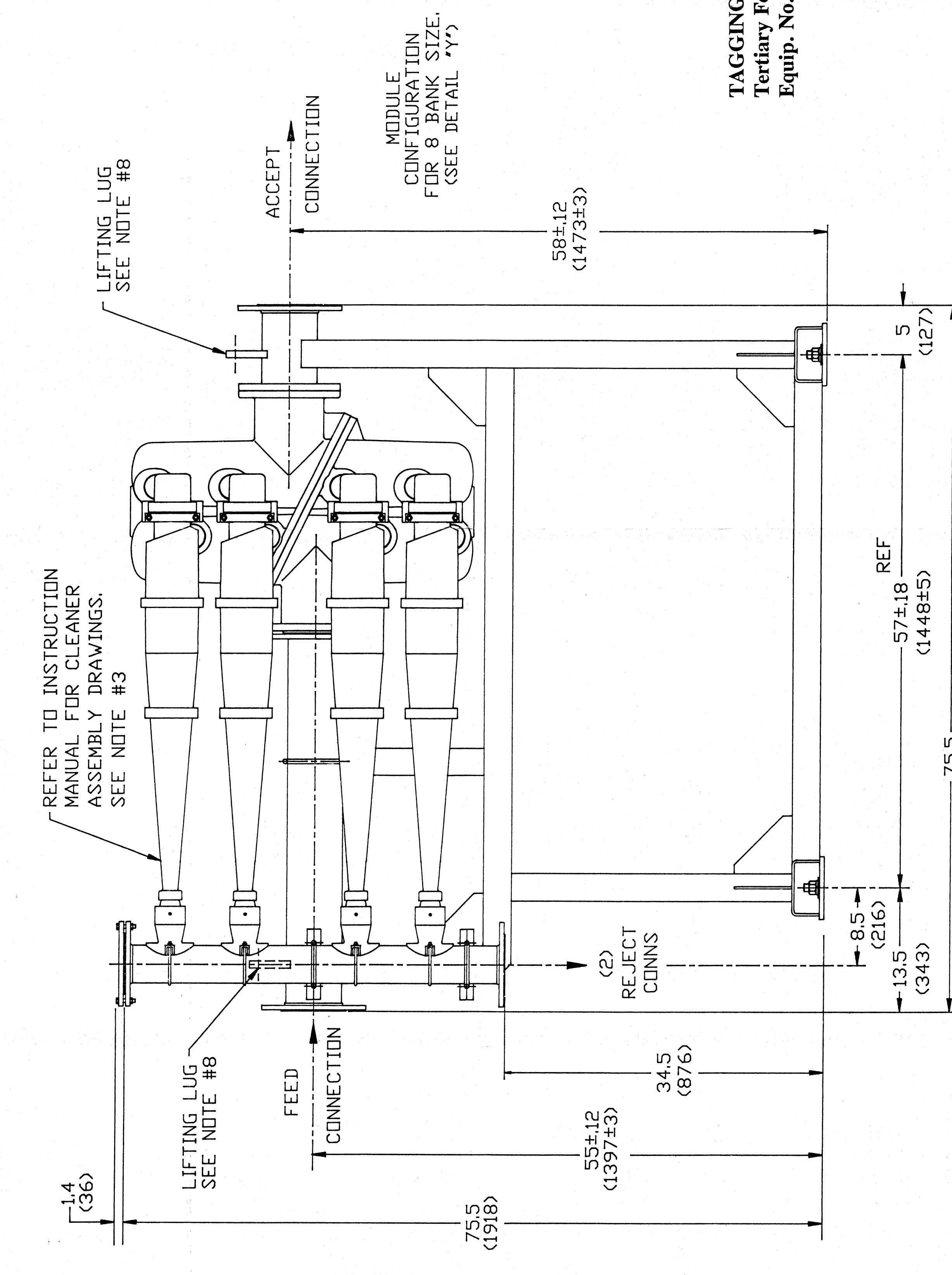
ENLARGED VIEW
 RECOMMENDED ANCHOR
 BOLT DESIGN



VIEW Z-Z



MODULE
 CONFIGURATION
 FOR 4 BANK SIZE.



TAGGING:
 Tertiary Forward Cleaners
 Equip. No. 3020-71037

FOR: Andover VPS Partnership
 ADDRESS: Auburn, ME
 S.O. 25562-12 C.O. 04359-N-018 SERIAL NO. INC-184

DRAWING APPROVED AS SENT AND FABRICATION SHALL BE IN ACCORDANCE WITH THE SPECIFICATIONS RETURNED CORRECTED TO SULZER PAPERTEC, MANSFIELD INC. WITHIN 90 DAYS OF RECEIPT.
 FINAL CERTIFIED
 DESIGNED BY: S. Secker DATE: 9.3.94

This Drawing is the Property of Sulzer Papertec, Mansfield, Inc. It is to be used only as specified and is not to be reproduced or used for any other purpose without the written consent of Sulzer Papertec, Mansfield, Inc. MAY 19 1994

CHECK ONE	BANK SIZE	EMPTY WEIGHT (W/O CLEANERS) LBS (KG)	OPERATING WT (W/CLEANERS) LBS (KG)		CONNECTION SIZE (NOTE #10)	
			FEED	ACCEPT	FEED	ACCEPT
	4	530 (241)	810 (368)	6"	6"	4'
✓	8	550 (250)	1010 (459)	6"	6"	4'

CONE MATERIAL	WEIGHT OF INDIVIDUAL CLEANER	
	LBS (KG)	(5,4)
NYLON	EMPTY	12 (5,4)
NYLON	FULL	33 (14,9)
CERAMIC	EMPTY	20 (9)
CERAMIC	FULL	41 (18,5)

NOTES:

- REFER TO INSTRUCTION MANUAL FOR INSTRUCTIONS ON INSTALLING, OPERATING, AND MAINTAINING CLEANER SYSTEM.
- SULZER PAPERTEC ASSUMES NO RESPONSIBILITY FOR THE DESIGN OF SUPPORTS, FOUNDATION, STRUCTURAL AND CONCRETE WORK, OR ANY OTHER EQUIPMENT NOT SUPPLIED BY IT.
- CLEANERS TO BE INSTALLED AFTER UNIT HAS BEEN GROUTED IN PLACE.
- ANCHOR BOLTS, NUTS, AND WASHERS ARE TO BE SUPPLIED BY CUSTOMER.
- FOUNDATION DESIGN TO INCLUDE 25% DYNAMIC LOAD ABOVE OPERATING WEIGHT.
- FEED, ACCEPT, AND REJECT PRESSURE GAUGES AND TRANSMITTERS SHOULD BE LOCATED AT THE SAME ELEVATION AS THE RESPECTIVE HEADERS ON THE CLEANER BANK. THIS PREVENTS MEASUREMENT INACCURACIES DUE TO ELEVATION DIFFERENCES. THE PRESSURE GAUGE/TRANSMITTER SHOULD BE WITHIN APPROXIMATELY 8 INCHES OF THE CLEANER BANK AS FAR FROM DISCONTINUITIES AS POSSIBLE, AND ON THE SIDES OF HORIZONTAL PIPE RUNS WHERE POSSIBLE.
- MAXIMUM OPERATING PRESSURE - 60 P.S.I. (4.1 BAR) MILL MUST PROVIDE SOME TYPE OF PRESSURE RELIEF SYSTEM TO PREVENT UNIT FROM BEING OVER PRESSURIZED.
- REFER TO INSTRUCTION MANUAL BEFORE LIFTING.
- WARNING**
 NEVER TIGHTEN FOUNDATION NUTS IN SUCH A WAY AS TO CAUSE STRESSES ON THE HEADER ASSEMBLY WHICH WILL CAUSE MIS-ALIGNMENT OF THE CLEANERS.
- ALL FLANGE CONNECTIONS ARE 150# ANSI 16.5 DRILLED VAN STONE TYPE.

DIMENSIONS
 INCH
 (MM)

DRWN	DATE	DFox	ASSY INSTALLATION	(4-8 BANK)
	7-10-92		MACHINE	L-S CLEANER
CHKD				ZHC5-904-00020
DATE				
SCALE				NONE

MANUFACTURED BY: **SULZER Papertec**
 MANSFIELD, MA U.S.A.