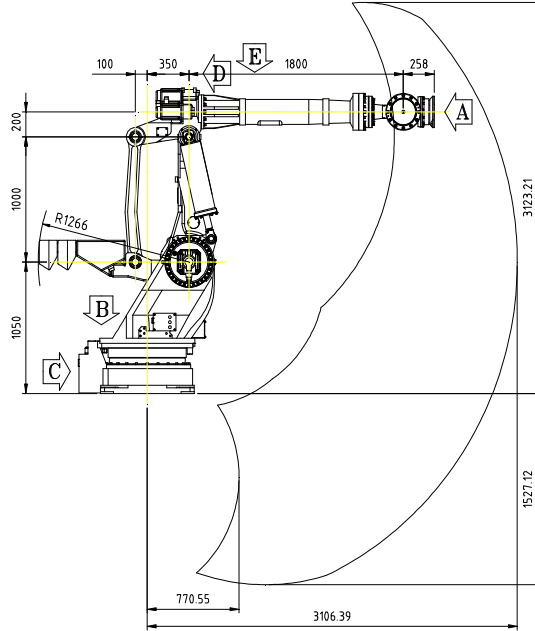
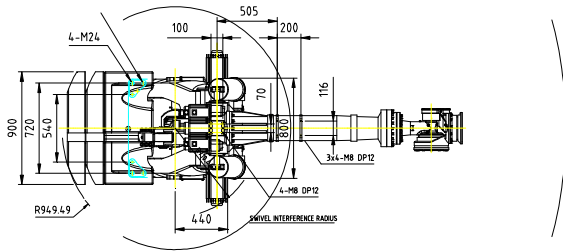


# HX400S

## Payload 400Kg



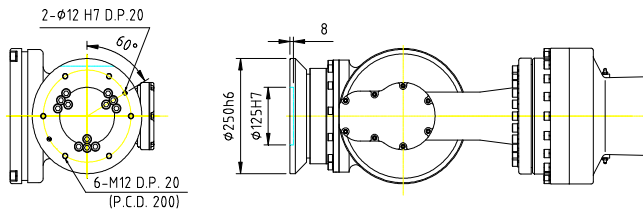
Installation method	
Floor	●
Ceiling	
Wall	

Application	
Spot Welding	●
Arc Welding	
Handling	●

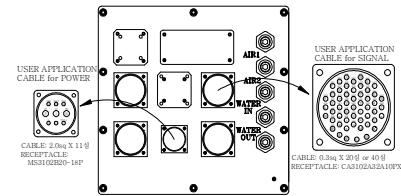
Item	Specification	
Robot model	HX400S	
Payload	400Kg	
Structure	Articulated	
Degree of freedom	6 axes	
Drive system	AC SERVO MOTOR	
Max. working envelope	A r m S	$\pm 3.142 \text{ rad } (\pm 180^\circ)$
	H	$+1.658 \sim -0.872 \text{ rad } (+95^\circ \sim -50^\circ)$
	V	$+1.047 \sim -1.047 \text{ rad } (+60^\circ \sim -60^\circ)$
	Wrist R2	$\pm 6.283 \text{ rad } (\pm 360^\circ)$
	B	$\pm 2.094 \text{ rad } (\pm 120^\circ)$
Max. working speed	A r m S	$1.484 \text{ rad / s } (85^\circ / \text{s})$
	H	$1.484 \text{ rad / s } (85^\circ / \text{s})$
	V	$1.484 \text{ rad / s } (85^\circ / \text{s})$
	Wrist R2	$1.745 \text{ rad / s } (100^\circ / \text{s})$
	B	$1.745 \text{ rad / s } (100^\circ / \text{s})$
Wrist torque	R2	1960 N·m (200Kgf·m)
	B	1960 N·m (200Kgf·m)
	R1	823 N·m (84Kgf·m)
Accuracy of position repeatability	$\pm 0.5 \text{ mm}$	
Ambient Temperature	$0 \sim 45\text{C } (273 \sim 318 \text{ K})$	
Robot's Weight	2910 Kg	
Working envelope section area	5.89 m <sup>2</sup>	

View A: Detailed drawing of the wrist attachment part

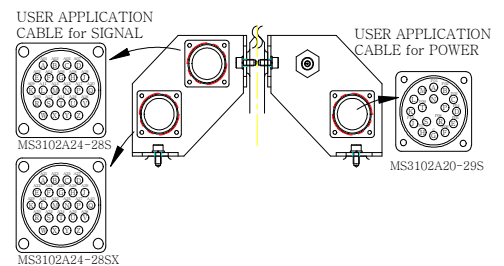
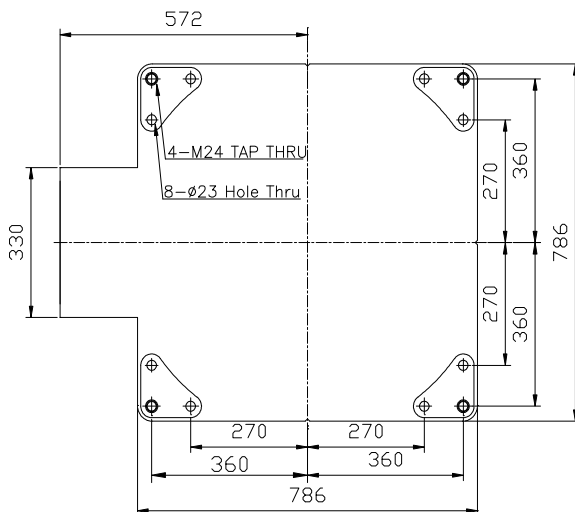
View C: Application cable connection part (Option)



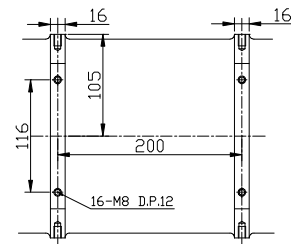
View B: Dimensional drawing for the floor installation of the body



View D: Application cable connection part (Option)



View E: Details of the application ancillary part attachment



\*\* For product improvement, some of the ratings, specifications, dimensions, etc. are subject to changes without notice.