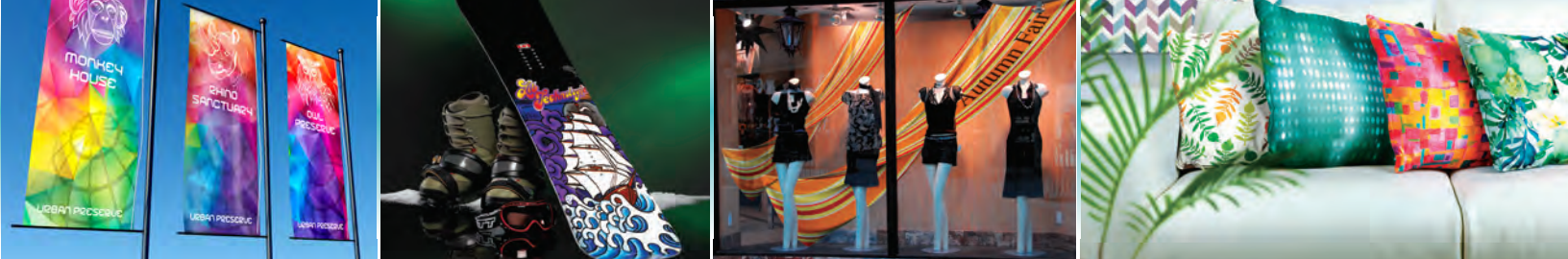


Simply brilliant.









## It All Starts With the Ink

Roland's new Texart SBL3 Dye Sublimation Ink delivers bold, vibrant color, deep, rich blacks, subtle gradations and remarkably fine details. The RT-640 can be configured as a four-color or eight-color device. In four-color (CMYK) mode, low-VOC Texart ink produces bright colors with velvety blacks, improved gray scale and high quality, detailed output. In eight-color (CMYKLcLmOrVi) mode, the addition of Orange and Violet ink produces an increased color gamut with exceptional reds, oranges, deep blues and purples, while Light Cyan and Light Magenta provide subtle gradations and beautiful skin tones.

The new Roland bulk ink system includes airtight sealed one liter pouches. When printing in four-color mode, the Roland Ink Switching System automatically switches to the backup pouch when the primary pouch runs out. Further expediting production, you can replace an empty pouch without stopping the printer.

The combined dye sublimation transfer technology of SBL3 inks and the RT-640 is ideally suited to all forms of textile manufacturing on polyester fabric.

## Every Detail Has Been Optimized for Exceptional Output, Performance and Value

An advanced, eight-channel print head contains 180 nozzles per channel capable of producing seven different droplet sizes for smoother gradations and denser color. Texart ink is approximately 15% less expensive per liter than conventional inks, yet provides outstanding color reproduction. The ink waveform and maintenance sequence control technology deliver optimum output and print quality. The RT-640 also includes a newly designed media feed adjuster at the front and back of the printer that prevents skewing when running transfer paper media at high speeds. Enhanced vacuum power keeps paper flat for printing.

## Powerful ErgoSoft Roland Edition RIP Included

ErgoSoft Roland Edition is a special edition RIP developed exclusively for Roland by ErgoSoft, a premier RIP provider in the sublimation market. Support for both eight-color and four-color printing is provided and it includes numerous features especially for sublimation production that combine excellent high-speed RIP throughput, image quality and productivity.

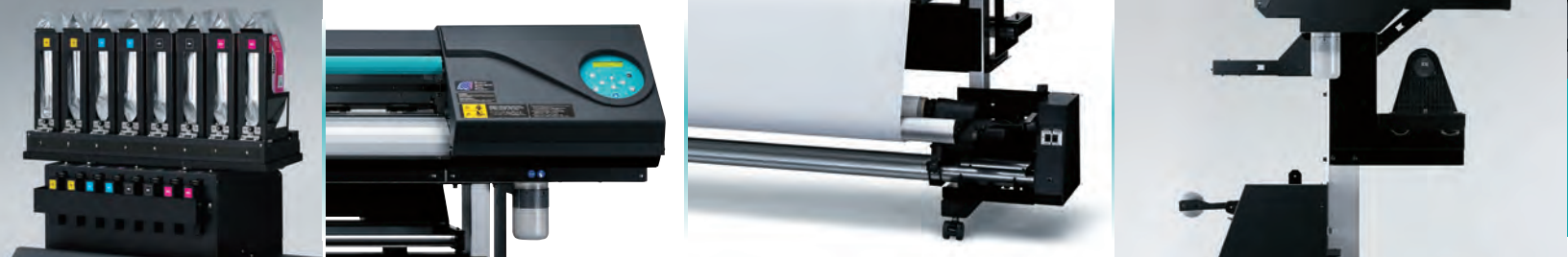


## Take Advantage of Advanced Productivity Features

The RT-640 comes with a host of features that boost productivity. The newly developed feed adjuster combined with an included take-up system facilitates precision unattended printing. The TU-3 take-up system combines a convenient front-mounted roller and an advanced tension controlled take-up unit for optimum media feeding and tracking. With Roland Printer Assist, you can manage your RT-640 remotely when you're in the office using an iPad tablet, allowing you to control common printer operations such as test printing and cleaning functions.



To watch a video of the RT-640  
visit [www.rolanddga.com/rt](http://www.rolanddga.com/rt).



## TEXART™ RT-640 DYE-SUBLIMATION PRINTER

- 64" integrated dye sublimation printer
- New Texart SBL3 Dye Sublimation Ink for vivid color
- ErgoSoft Roland Edition Sublimation RIP included
- Choose from two ink configurations
  - Dual CMYK
  - CMYKLCmOrVi
- Maximum speed of 351 sqft/hr (32.6 sqm) (540x360 dpi/2 pass)
- Gold-plated 8-channel print head for improved static control and variable droplet printing
- Advanced Feed Adjuster for highly stable printing
- Unattended printing with integrated bulk ink system and ink pouch switching when in 4-color mode
- Roland Printer Assist iPad app allows remote management of common printer functions
- Included media take-up handles 110 lb. rolls for greater capacity

- Ethernet connectivity for high-speed data transfer
- Industry-leading Roland reliability, service and support
- Two-Year, Trouble-Free Warranty\*
- Roland OnSupport sends production updates via text message or email or your computer, tablet or smart phone



For detailed features and specifications, visit [www.rolanddga.com/rt](http://www.rolanddga.com/rt).

## PRODUCT SPECIFICATIONS

Model		RT-640
Printing technology		Piezoelectric inkjet / Grit roller feed
Acceptable media	Width	Roll media: 10.2 to 64 in. (259 to 1,625 mm)
	Thickness	Roll media: Maximum 39 mil (1.0 mm)
	Weight	Roll media: Maximum Maximum 88 lbs. (40 kg)
	Roll outer diameter Core diameter	Maximum 8.3 in. (210 mm) 3 in. (76.2 mm) / 2 in. (50.8 mm) with optional flanges
Media take-up system		Maximum 8.3 in (210 mm) outer diameter / Maximum 110 lb. (40 kg) weight
Printing width		Maximum 63.6 in. (1615 mm)
Printing resolutions		Maximum 1,440 dpi
Distance accuracy		Error of less than $\pm 0.3\%$ of distance traveled, or $\pm 0.012$ in (0.3 mm), whichever is greater.
Interface		Ethernet (10 BASE-T / 100 BASE-TX, automatic switching)
Power-saving function		Automatic sleep feature
Power supply	Voltage and frequency Required power capacity	AC 100 to 240 V $\pm 10\%$ , 50/60 Hz Maximum 1.5 A
Power consumption	During operation Sleep mode	Maximum 140 W Approx. 31 W
Dimensions (with stand)		With Stand: 104.4 in. (W) x 31.3 in. (D) x 63 in. (H) (2,650 mm (W) x 795 mm (D) x 1,600 mm (H))
Weight (with stand)		With stand: 353 lbs (160 kg)
Environment	Power on Power off	Temperature: 18 to 25 °C (64.4 to 77 °F), humidity: 35 to 65 %RH (no condensation) Temperature: 15 to 30 °C (59 to 86 °F), humidity: 20 to 80 %RH (no condensation)
Included items		Exclusive stand, power cord, media clamps, media holder, replacement blades for separating knife, take-up reel, User's Manual, etc.

Specifications subject to change. \*Except select consumables and customer replacement items. Registration within 60 days and continuous exclusive use of Roland Inks during the first two years of ownership is required to qualify for the free second year of limited warranty coverage. Additional Terms and Conditions apply. See [www.rolanddga.com/warranties](http://www.rolanddga.com/warranties) for details

Get social with us.



Imagine. **Roland**®

FOR COMPLETE PRODUCT SPECIFICATIONS AND FEATURES, OR TO REQUEST A SAMPLE PRINT, CALL 800-542-2307 OR VISIT [WWW.ROLANDDGA.COM/RT](http://WWW.ROLANDDGA.COM/RT)  
 ROLAND DGA CORPORATION | 15363 BARRANCA PARKWAY | IRVINE, CALIFORNIA 92618-2216 | 800.542.2307 | 949.727.2100 | CERTIFIED ISO 9001:2008

RDGA-RT-03 July 2016