

VINCENT



KP SCREW PRESS



KP-12 with Safety Guarding



Fiber Filter as Pre-thickener to KP-10



KP-10 Screw Press at Vincent



Dual KP-16s on Dairy Manure



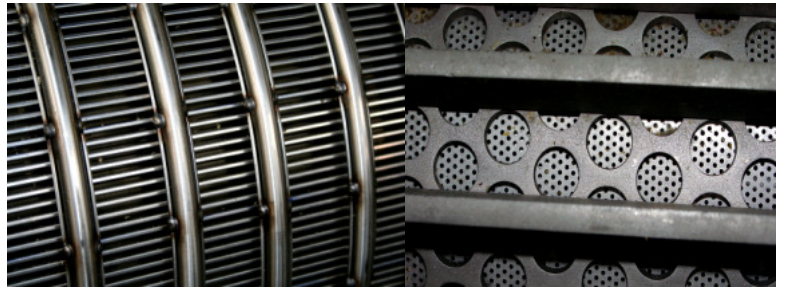
Shredder at Press Inlet



KP-16 with Level Sensor for Flow Control



KP-10 at Plastics Recycler



Stainless Steel Wedgewire (L) and Reinforced Perforated (R) Screens



Trio of KP-24s on Corn Fiber



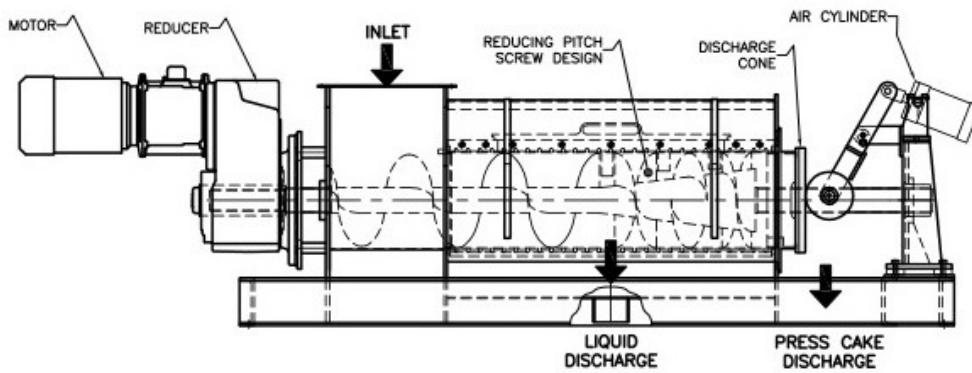
Interrupted Flighting, Graduated Pitch and Resistor Teeth for Maximum Dewatering



KP-6 Fed by Sidehill Screen



Air Cylinder Actuated Discharge Cone Controls Press Cake Moisture



Vincent Corporation specializes in the design, engineering and manufacture of screw presses. The company was founded in 1931 and is today **the number one provider** of screw presses in North America. Vincent presses can be found in over fifty countries, and over 200 in-service applications are described on our website.

The Series KP presses use a hollow-bore gearbox rated for 24/7 service. Dilute materials can be pumped directly into the screw press.

Sometimes pre-thickening improves performance, typically with a Vincent VDS parabolic sidehill screen or a Vincent Fiber Filter.

Vincent maintains a large fleet of rental presses that are available for on-site testing and demonstration. Alternatively, our engineers will run samples on a lab-sized press at our factory at no charge.

Model	Capacity* pounds/hr	Screw Speed RPM	Motor HP	Length feet.	Width feet.	Height feet.	Weight pounds
KP-6	300 - 1,000	16 - 24	2 - 5	6	1.2	2	800
KP-10	1,500 - 5,000	17 - 28	5 - 15	9	2	3	2,000
KP-12	4,000 - 16,000	22	10-20	10	2.5	3.5	3,500
KP-16	15,000 - 30,000	17 - 26	15 - 20	13	3	4	4,500
KP-24	30,000 - 80,000	15 - 27	30 - 60	19	4	5	14,000
KP-30	50,000 - 120,000	26	40-100	22	6	7	26,000

*Shown capacities are our best estimate based on current applications. They can change based on feed consistency, bulk density, viscosity, etc. Trials are recommended to determine throughput capacity for a production-sized machine.



For more information, visit our website at www.vincentcorp.com and browse through pictures, products, technical papers and much more. Vincent Engineers are available by phone at 813-248-2650 to answer your technical or sales inquiries. Feel free to come by and visit our facilities in Tampa, Florida.