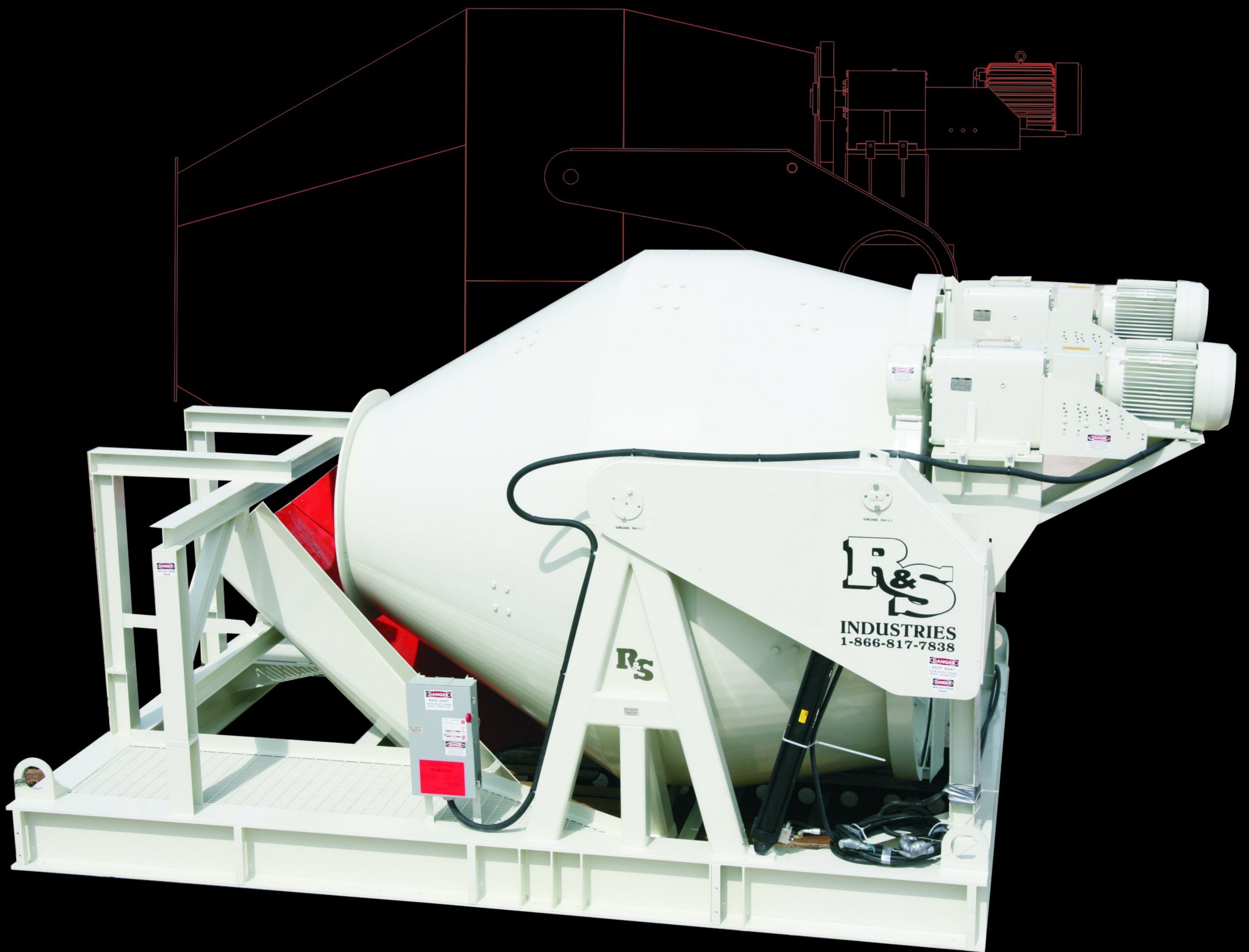


R&S INDUSTRIES

CENTRAL TILT MIXER



10, 12, 15, or 18yd.

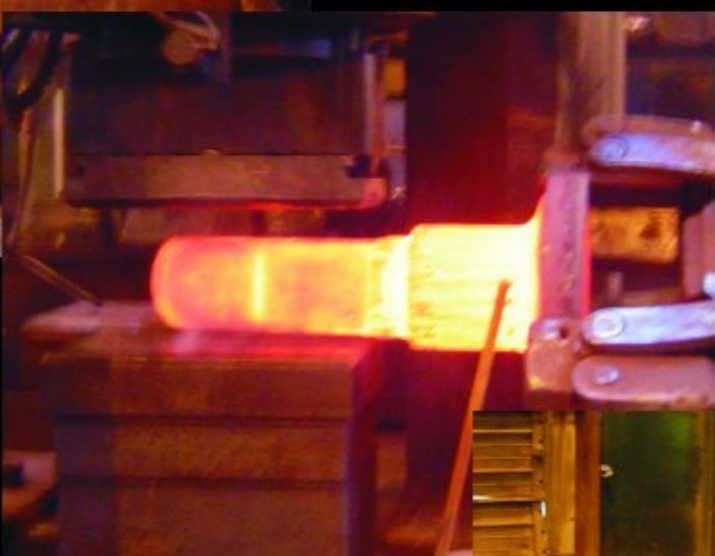


randsinc.com 866-817-7838

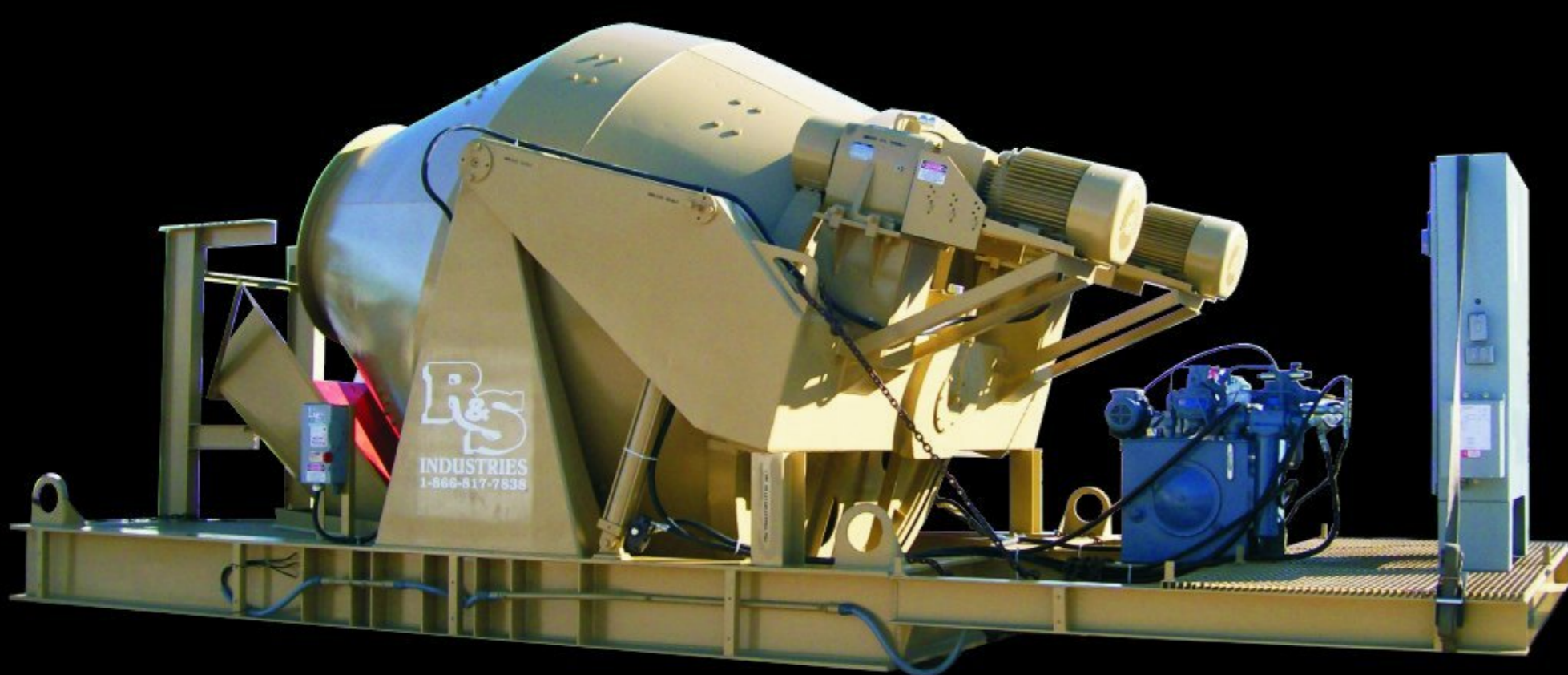
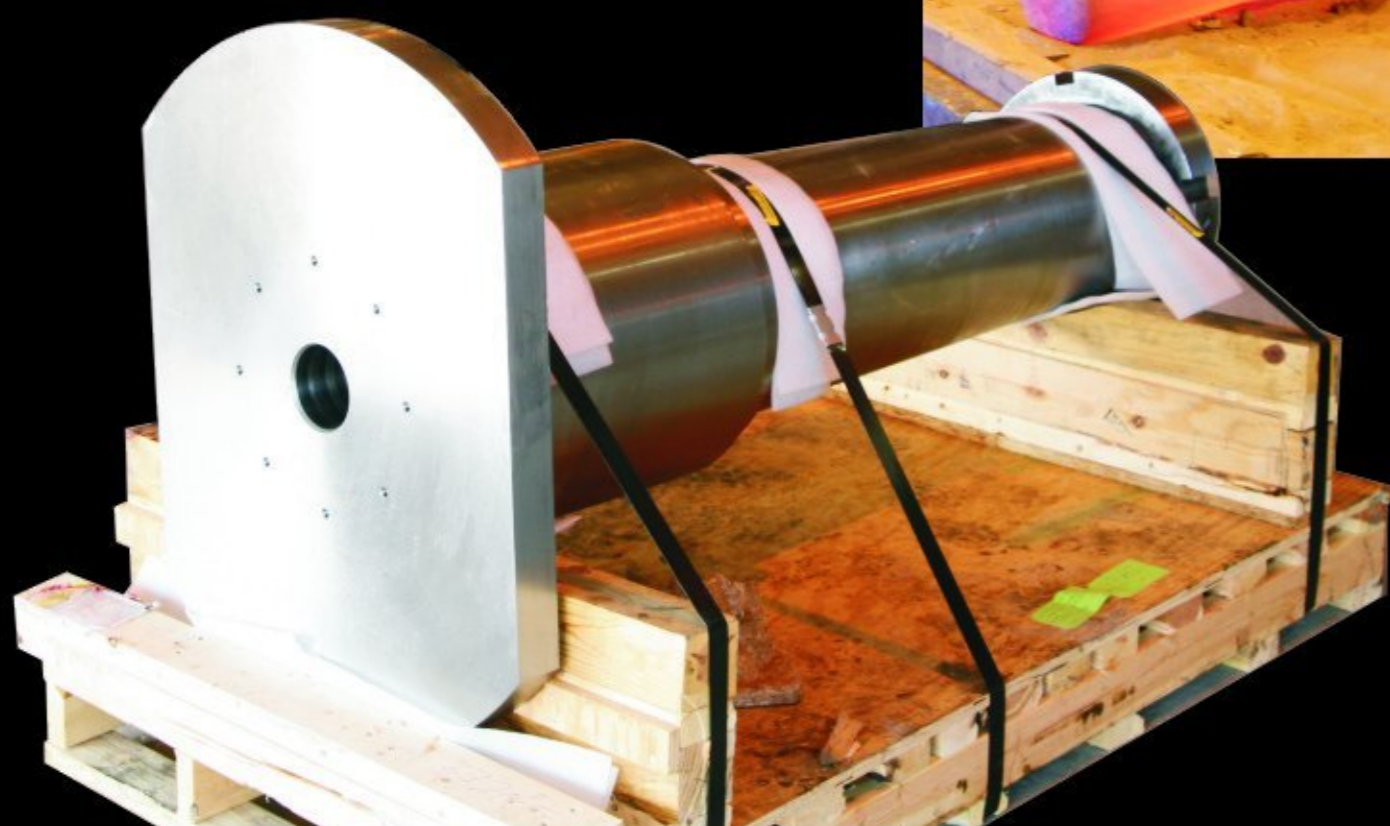
FEATURES INCLUDE:



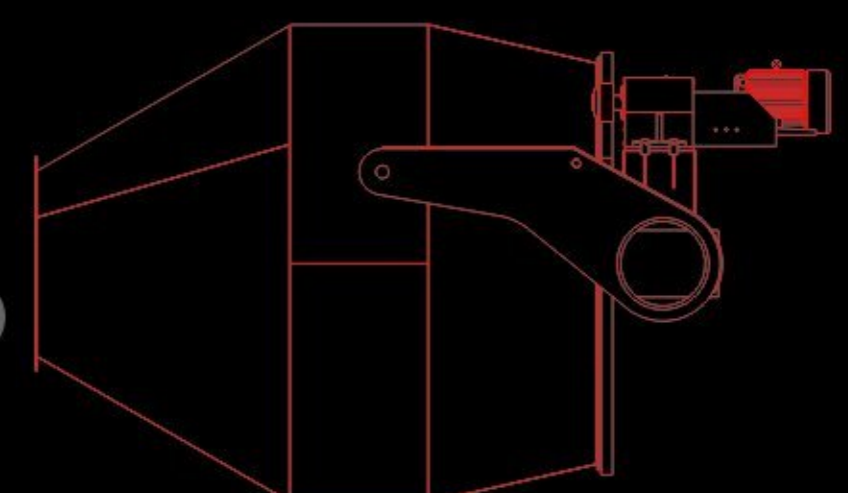
- Twin heavy duty drum drive units with helical reducers, couplings, TEFC motors and precision machined pinion gears.
- Hardened precision main gear with safety guard. Both main gear and drives are located away from mixer discharge area protecting them from contamination caused by splashing concrete.
- Tilting of mixer is provided by two hydraulic cylinders powered by a hydraulic power unit.
- The hydraulic power unit includes a pressure adjusting variable displacement pump. This style pump produces much less heat than the conventional vane and gear pumps. Power unit also includes pressure relief valve, suction and return line filters.
- Tilting of the mixer is controlled by variable speed control valve and a numeral dialing control knob.
- The mixing drum is supported at the rear by a hub and spindle assembly which includes two heavy-duty roller bearings and oil seal with replaceable steel wear ring. Both the hub and spindle are hammer forged and machined for high grade steel.
- The charging / discharging mixer mouth is the largest in the industry allowing for very quick charging and discharging of material, also providing easy access when servicing the interior of mixer. The mouth is equipped with an AR steel wear ring on which a rubber dust seal makes direct contact providing an excellent dust tight seal.
- Superior mixing of materials is accomplished by heavy-duty mixer blades. Unlike double opening tilt mixer, no secondary blades or buckets are required, greatly reducing clean-out time and blade replacement cost.
- Interior of drum and front side of mixing blades are protected by one inch thick poly-urethane liners.
- Concrete discharge chute which directs material into transport truck is lined with $\frac{3}{4}$ " poly-urethane wear liners. The chute is also equipped with over-sized splash guards which help contain wet material.
- Four proximity switches for confirming charging / discharge positions and reduce speed at end of titling cycle, protecting hydraulic system from sock loads.



Forged Spindle

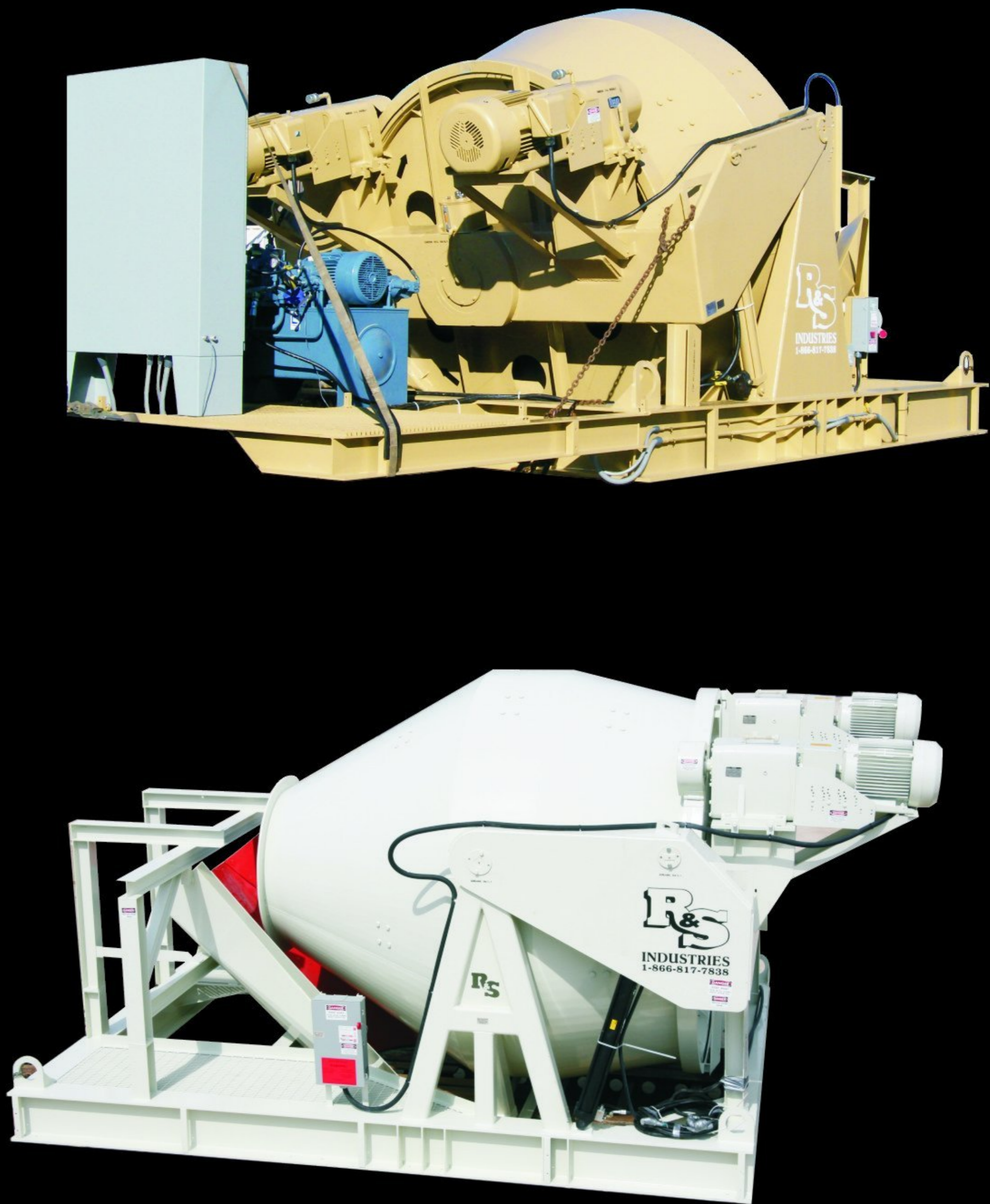


Available in: **10, 12, 15 & 18** cu yds



Optional Equipment

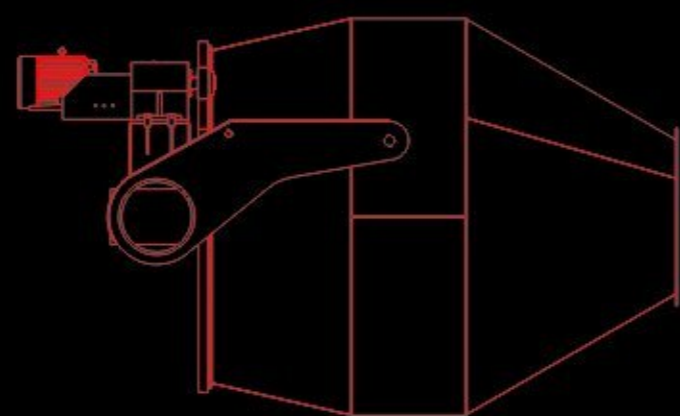
- Soft-start electrical motor gear for main mixer drives.
- Concrete collecting cone with ¾” poly-urethane liners for charging mixer trucks and 3’-0” long rubber discharge boot.
- Wringer gate helps control dripping of concrete on transport trucks by pinching off rubber boot.
- Telescopic discharge boot helps control flow of concrete in mixer trucks.
- Support systems designed to meet needs of your project including special heights, seismic codes, etc.
- Safety decks, ladders and stairways.
- Fast speed mixer hydraulic tilt system for charging holding hopper or dump trucks.
- Mobile transportation system for portable operations
- Emergency 110 volt back-up hydraulic tilt system used when main pump fails. Note: Customer to provide back-up power from generator or welding machine.



Mixer Specifications

MIXER SIZE (CUBIC YARDS)	RATED MIXER CAPACITY PER CPMB	HYDRUALIC POWER UNIT HP (STANDARD SPEED FOR READY MIX TRUCKS)	STANDARD TILT / RETURN TIMES	HYDRUALIC POWER UNIT HP (FAST SPEED FOR DUMP TRUCKS)	FAST TILT / RETURN TIMES
10	10.7	15	60 SEC / 9 SEC	40	10 SEC / 9 SEC
12	12.7	15	60 SEC / 9 SEC	40	10 SEC / 9 SEC
15	15.5	25	60 SEC / 9 SEC	50	10 SEC / 9 SEC
18	18.8	25	60 SEC / 9 SEC	50	10 SEC / 9 SEC

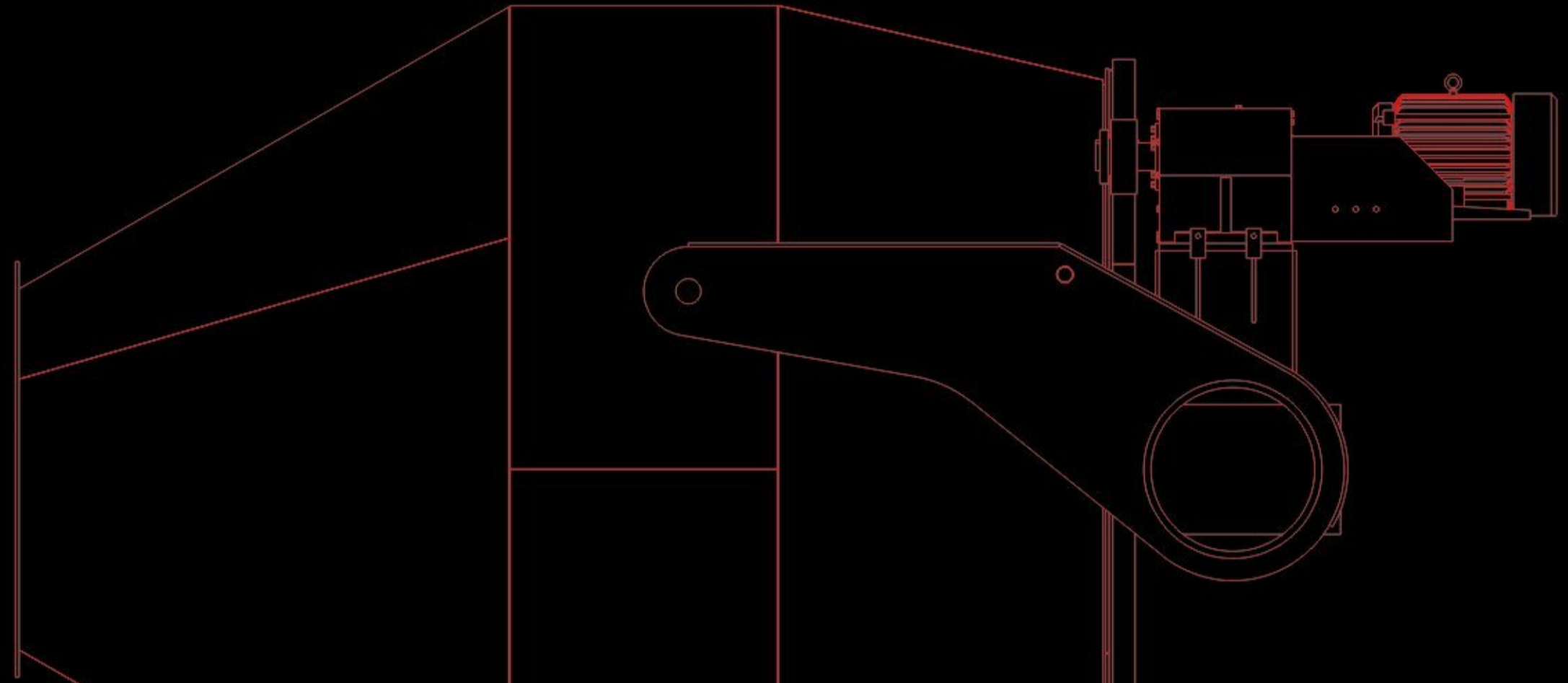
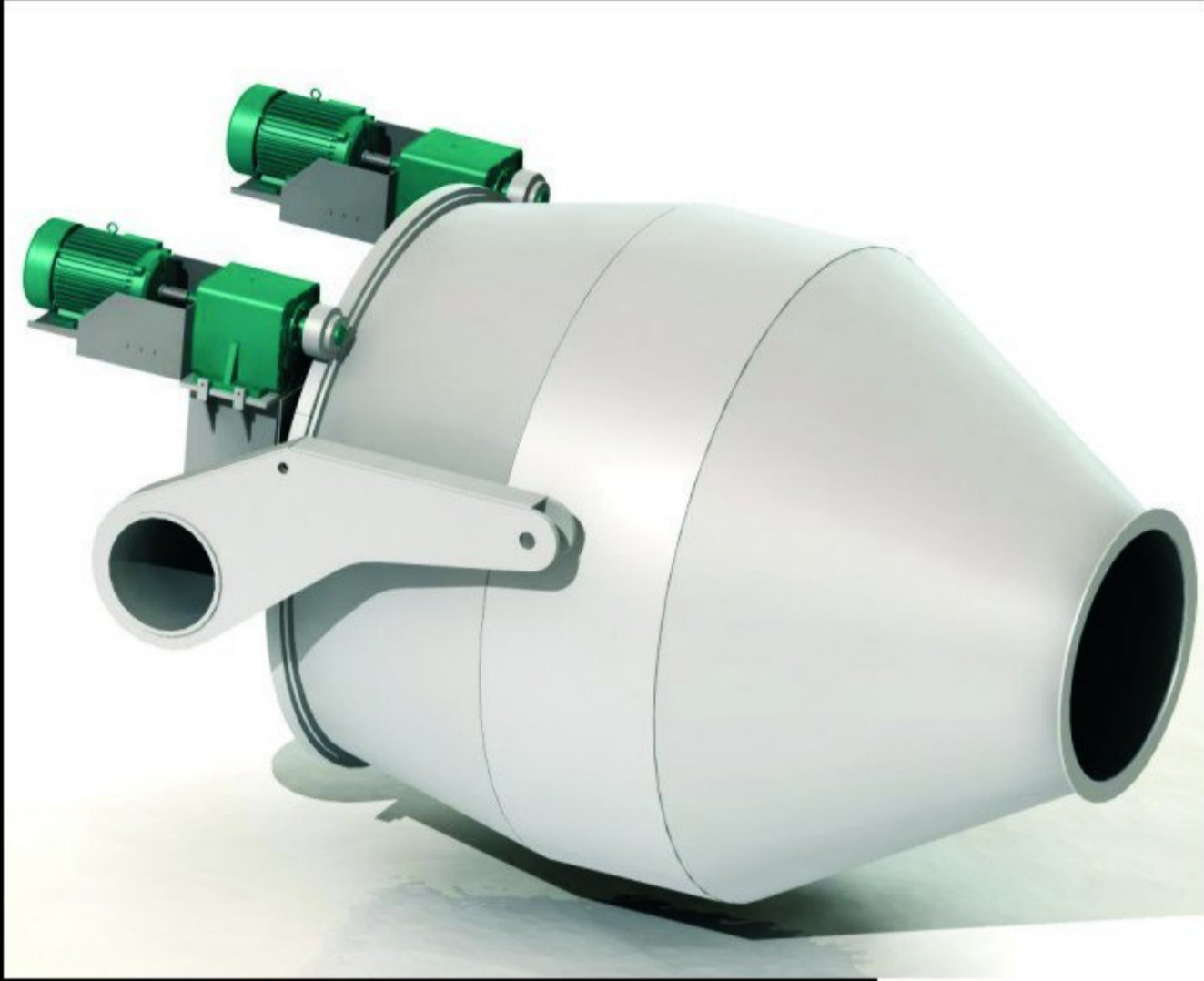
MIXER SIZE (CUBIC YARDS)	MIXER DRIVES	MIXING DRUM RPM'S	NUMBER OF MIXING BLADES	MIXING CHARGING / DISCHARGE OPENING	MAXIMUM WIDTH CHARGING CONVEYOR	SHIPPING WEIGHT (BASIC SHIPPING UNIT)
10	(2) 50 HP	10.2	4	48"	54"	
12	(2) 60 HP	10.2	4	48"	54"	
15	(2) 75 HP	8.31	5	54"	60"	55,000 LBS.
18	(2) 100 HP	8.31	5	54"	60"	60,000 LBS.



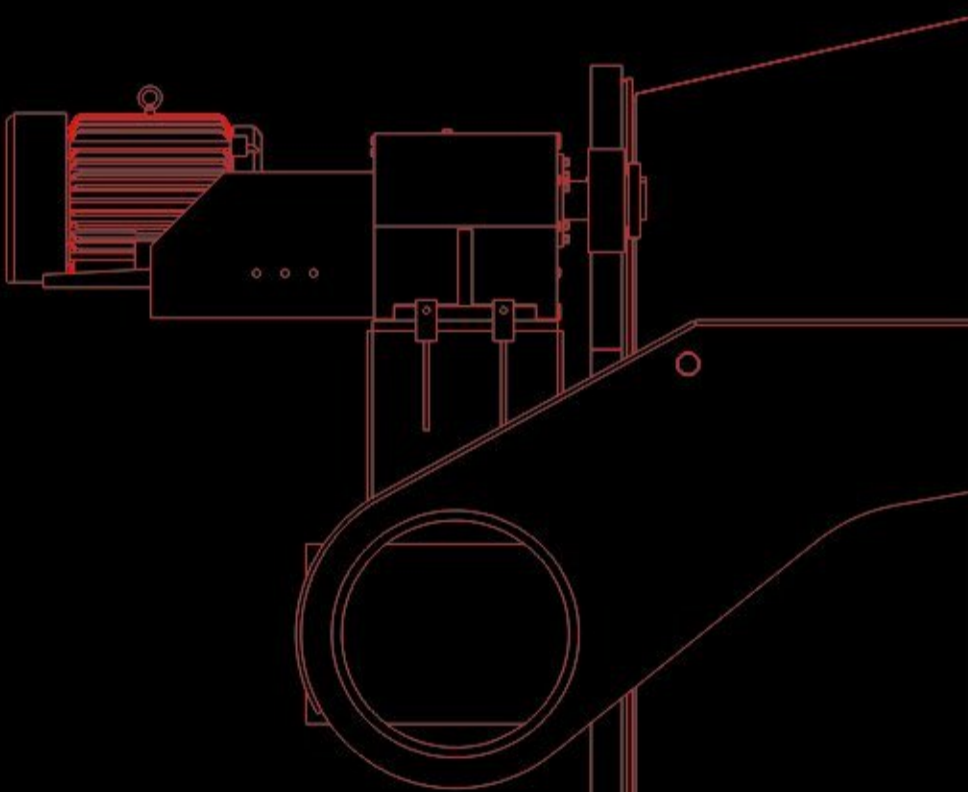
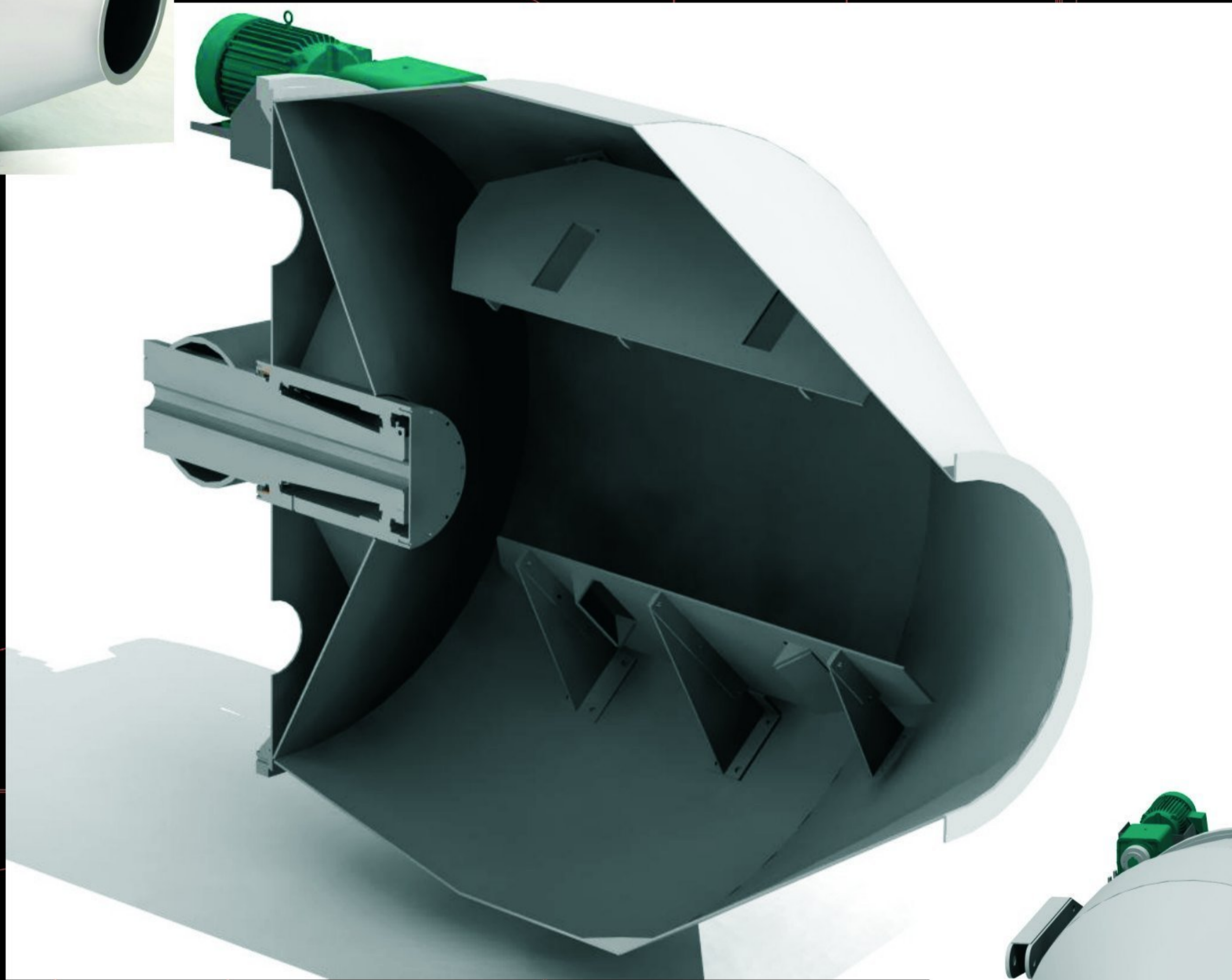
randsinc.com

R&S INDUSTRIES

866-817-7838



SOLIDWORKS RENDERING OF R&S MIXER



P.O.BOX 88, BROWNWOOD, TX 76804

RANDSINC.COM

SALES PHONE: 1-866-817-7838 / FAX 325-643-6641

MANUFACTURING & ACCOUNTING PHONE 325-643-1455