

Overview

Setting Information

The current settings to be used with the TRC-NW300 are:

NORMAL FUNDUS

- Auto exposure: ON
- Auto color base level: 0
- Flash Mode: STD
- Sharpness: -4
- Contrast: -4
- Hue (Color): 0
- Sensitivity: 100
- Shutter: 1/30
- White Balance: R-390 / G-230 / B-390
- Image size: 8MP (3264 x 2488)
- Image quality: JPEG Fine

DARK FUNDUS

- Auto exposure: ON
- Auto color base level: 0
- Flash Mode: STD
- Sharpness: -4
- Contrast: -4
- Hue (Color): 0
- Sensitivity: 200
- Shutter: 1/30
- White Balance: R-400 / G-230 / B-390
- Image size: 8MP (3264 x 2488)
- Image quality: JPEG Fine

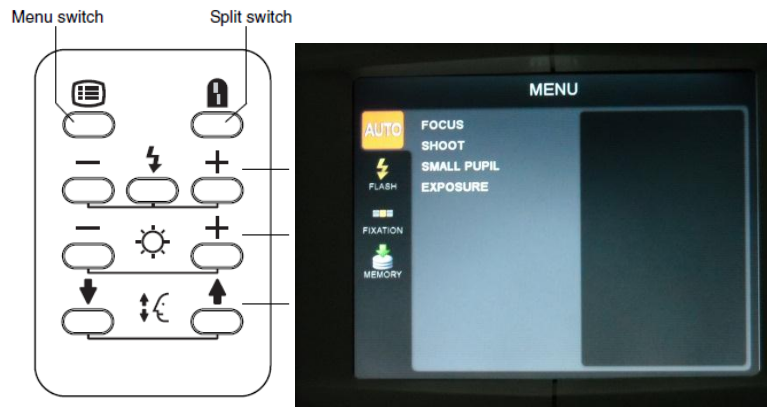
All other settings are the default from factory and don't need to be modified.

Below is the description of the steps to configure the new settings in a TRC-NW300 system with IMAGENet R4:

SETTINGS FOR THE TRC-NW300 FIRMWARE

To be performed using the TRC-NW300 menu on the instrument screen.

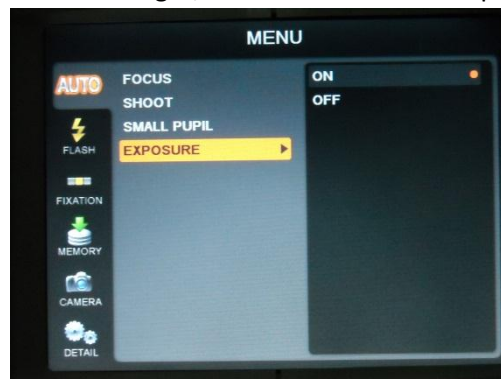
Press the Menu switch for the menu to appear on screen.



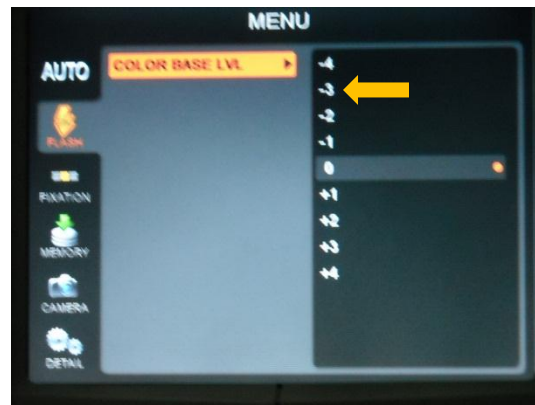
Press the button on the joystick for 10 seconds and the service menu will appear:



Using the arrows on the control, panel on the right, move the cursor to "Exposure" and set it to "On".



Move one place down to “Flash” and set the “Auto color base level” to -3.



Move down to levels to “Camera” and in the “Quality” line select “Fine”.



Move one line down to “Size” and select “8M pixel (3264x2448)”.



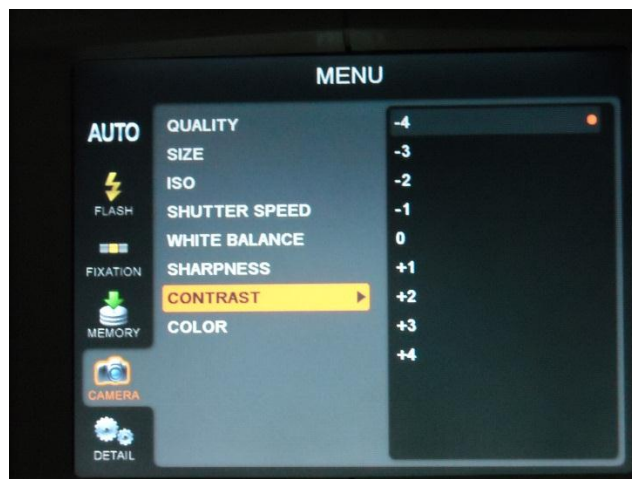
Skip ISO since this is controlled by IMAGEnet software. Go to “Shutter Speed” and select “1/30”.



Skip “White Balance” since this is controlled by IMAGEnet software. Go to “Sharpness” and set it to “-4”.



Go down to “Contrast” and set it to “-4”.



Go to “Color” and set it to “0”

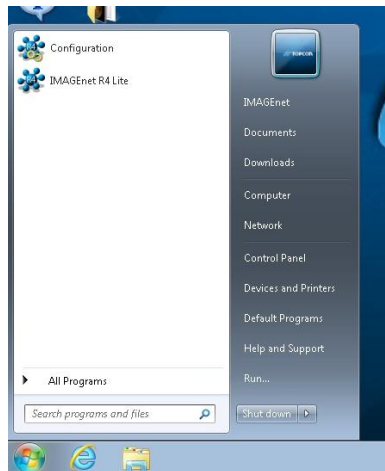


Exit the menu by pressing the menu button again.

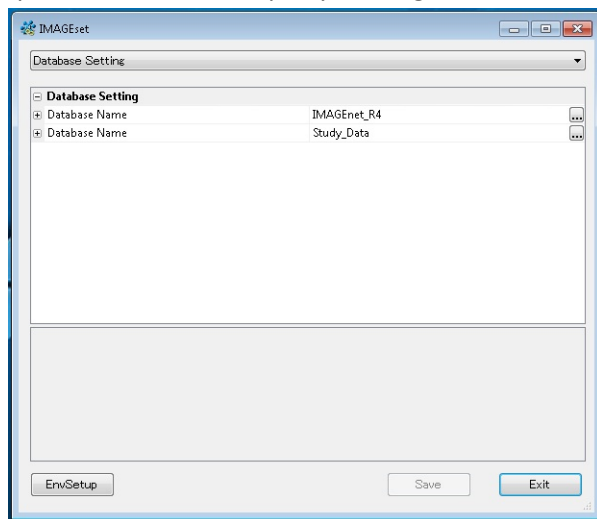
SETTINGS FOR IMAGEnet R4 – NORMAL FUNDUS

To be performed using the Configuration menu in the IMAGEnet R4 capture computer.

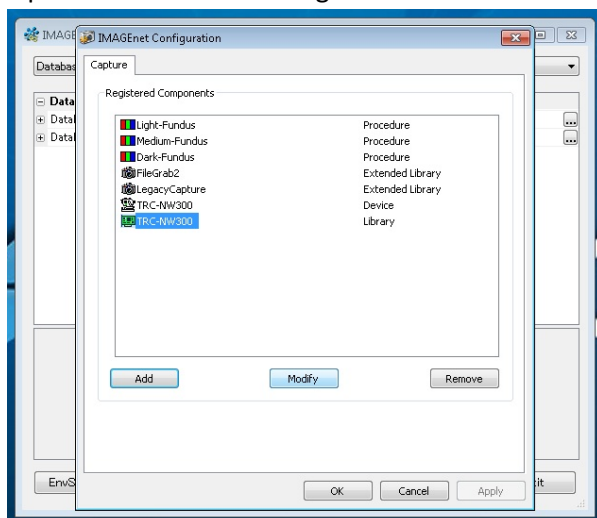
Click on the Start button and select “Configuration”



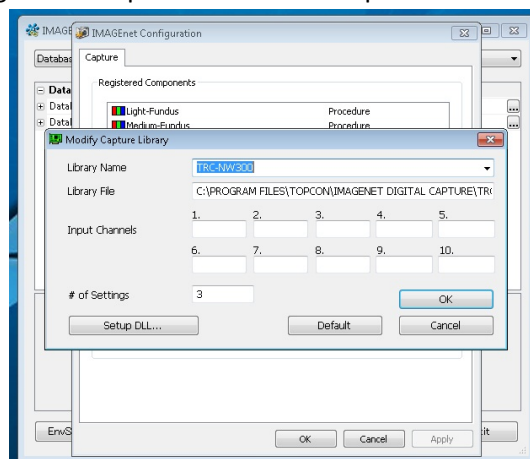
The configuration window will open. Select “Env Setup” by clicking the button on the lower left corner.



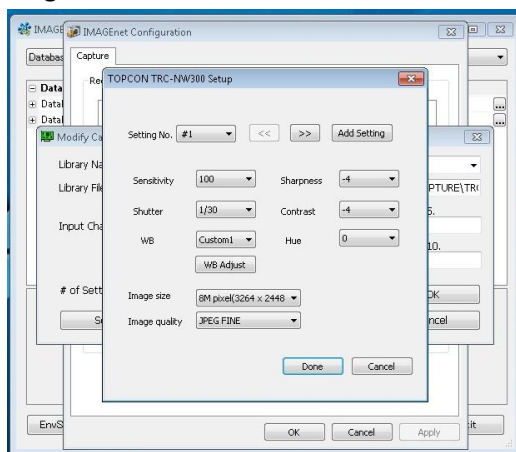
The capture dialog window will open. Select TRC-NW300 green icon and click on the “Modify” button.



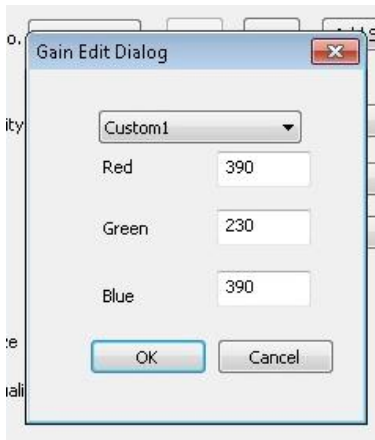
The Modify Capture Library dialog box will open. Click on “Setup DLL”.



The TRC-NW300 Setup dialog window will open. Make sure the Setting filed reads #1. Set each one of the fields to the configuration shown in the image below.

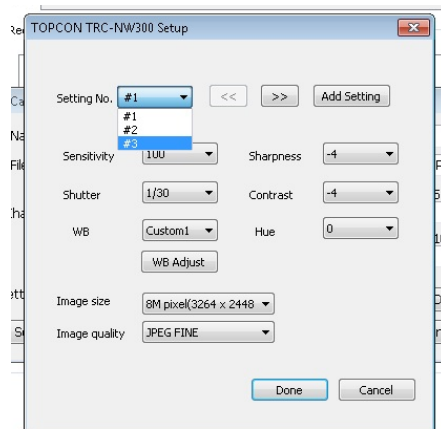


Then click on “WB Adjust”. The Gain Edit Dialog box will open. Set the Red, Green, and Blue fields to the numbers shown in the image below.

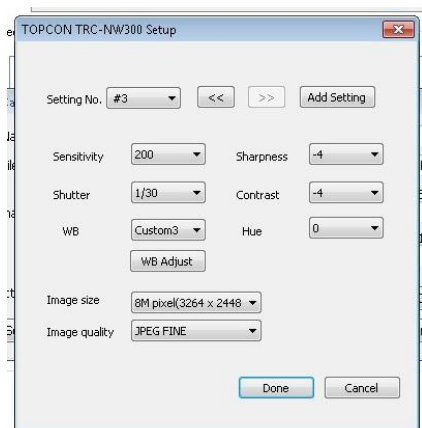


SETTINGS FOR IMAGEnet R4 – DARK FUNDUS

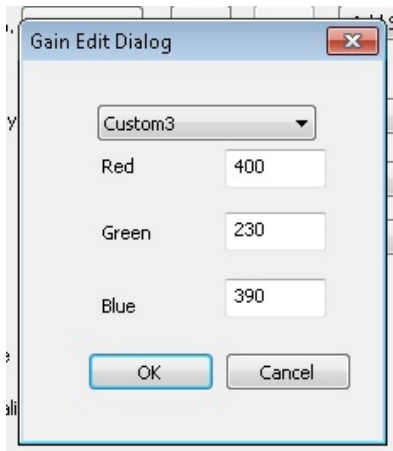
Close the dialog box clicking OK and click on “Settings” to open the selection list. Select #3.



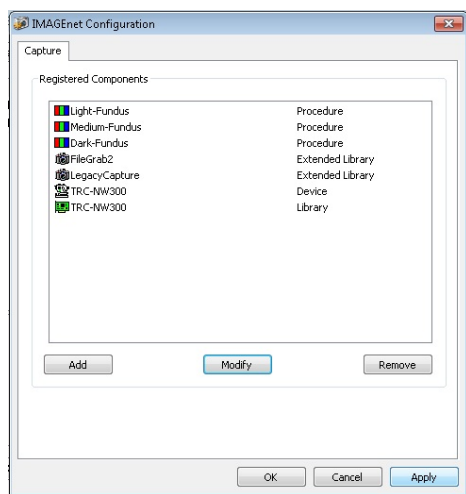
On the “Setting #3” window, set all the fields to the number shown on the image below.



Then click on “WB Adjust”. The Gain Edit Dialog box will open. Set the Red, Green, and Blue fields to the numbers shown in the image below.



Close all the windows by clicking “OK” or “Done” until you reach the window below. Click on “Apply” and then “OK”.



Exit the Configuration window and test the results. If the system is older or it has not been updated, you may notice that in the capture window there will be three capture tabs: “Light Fundus”, “Medium Fundus” and “Dark Fundus”.

Ignore the “Medium Fundus” tab and only use “Light Fundus” and “Dark Fundus” Eventually the “Medium Fundus” tab will be removed.