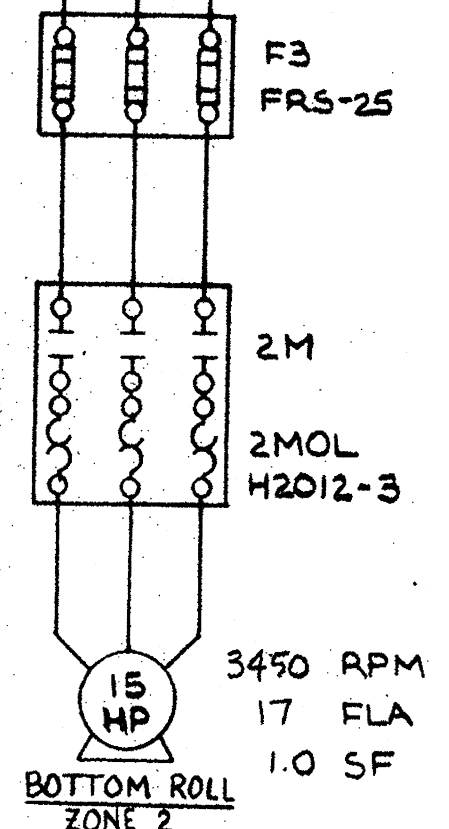
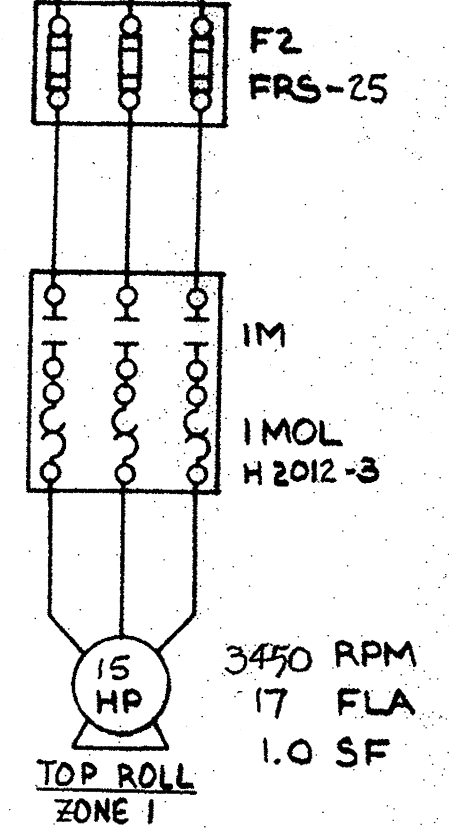
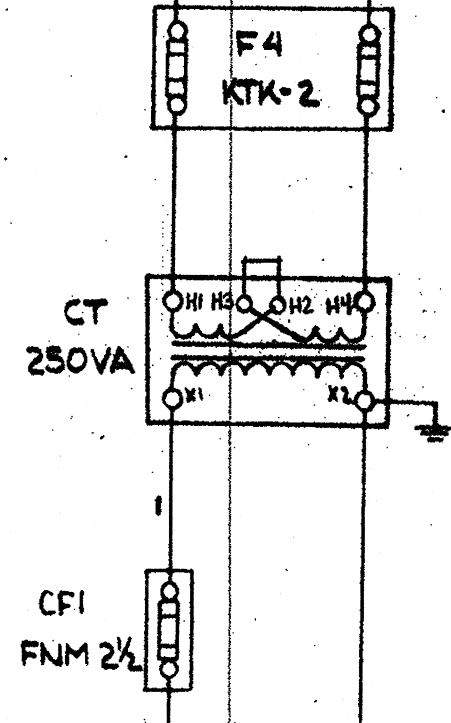
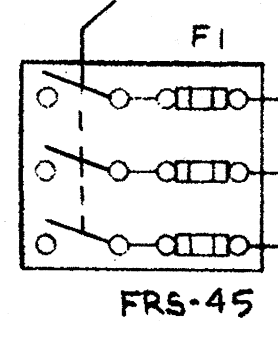
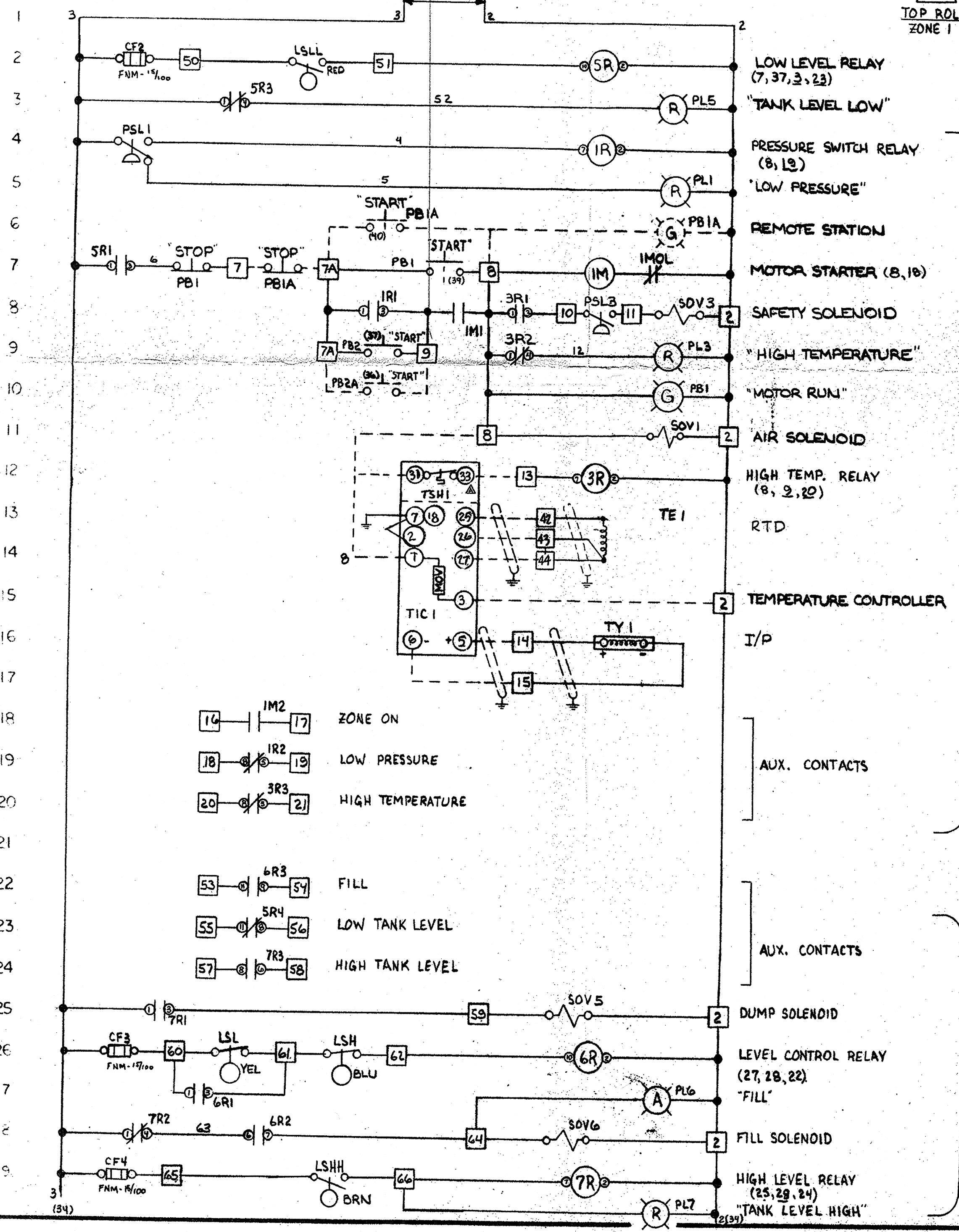


460 VOLT
3 PHASE
60 HERTZ
35 AMPS

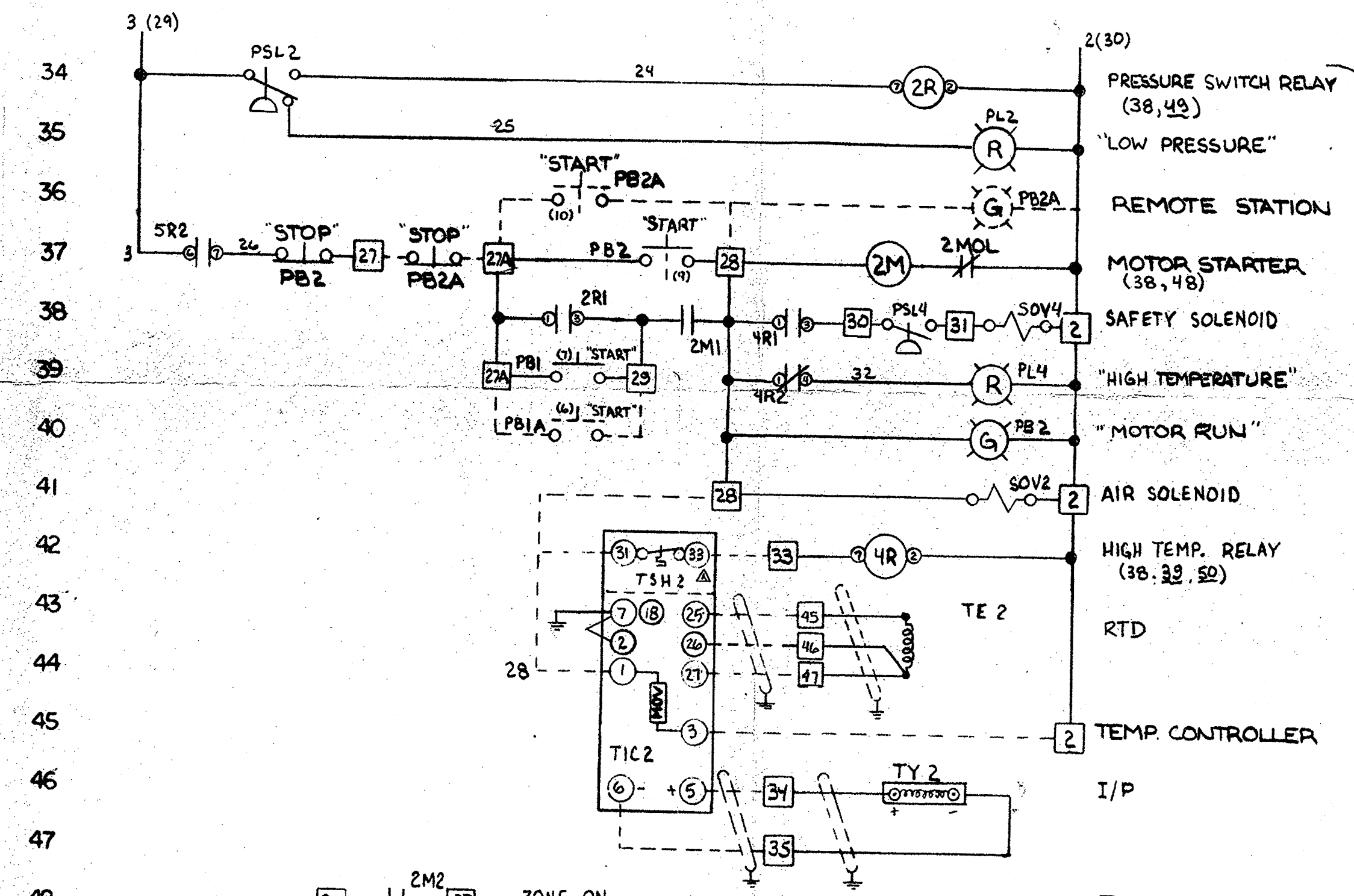


NOTES:

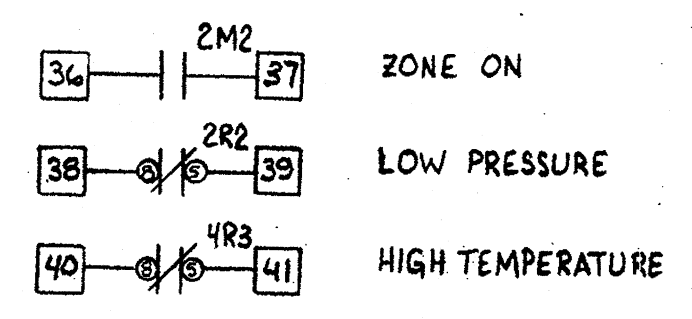
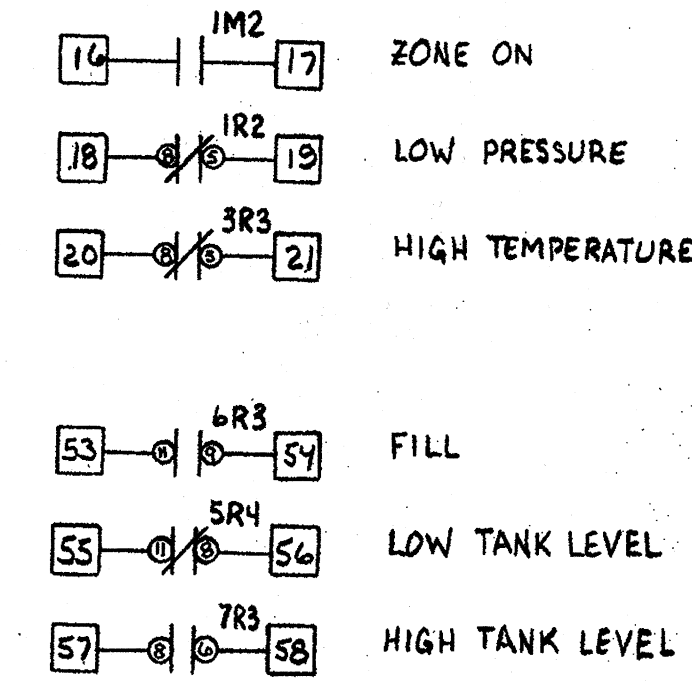
- 1) PUSHBUTTONS & PILOT LIGHTS W/-A SUFFIX BY OTHERS, IF NOT USED, JUMPER TERMINAL 7 TO 7A, AND 27 TO 27A.
- 2) WIRES SHOWN DOTTED BY OTHERS. LOW LEVEL SIGNALS (RESISTANCE, DC VOLTAGE AND OR/ CURRENT) TO BE RUN IN SEPARATE CONDUIT.
- 3) POWER WIRING TO BE 12GA. BLACK MINIMUM.
- 4) CONTROL WIRING TO BE 16GA. RED MIN. EXCEPT NEUTRAL TO BE WHITE, GROUND TO BE GREEN. WIRE EXTERNAL TO THE CABINET TO BE 14 GA THIN. WIRES WITH EXTERNAL SOURCE OF POWER TO BE YELLOW.



TOP ROLL
ZONE 1



BOTTOM ROLL
ZONE 2



KEYS

□	TERMINAL BLOCK - MAIN ENCLOSURE
○	TERMINAL BLOCK - DEVICES

REFERENCE DRAWINGS

D-89012	FLOW SCHEMATIC
D-89010	GEN. ARRANGEMENT

REV.	REVISION	BY	DATE
A	CHANGE TERMINAL ON TSH-1, TSH-2	KJP	4-5-89

THIS DRAWING AND ALL INFORMATION CONTAINED HEREIN IS THE PROPERTY OF ENERCON SYSTEMS, INC. AND MAY NOT BE DISCLOSED OR USED WITHOUT WRITTEN PERMISSION.

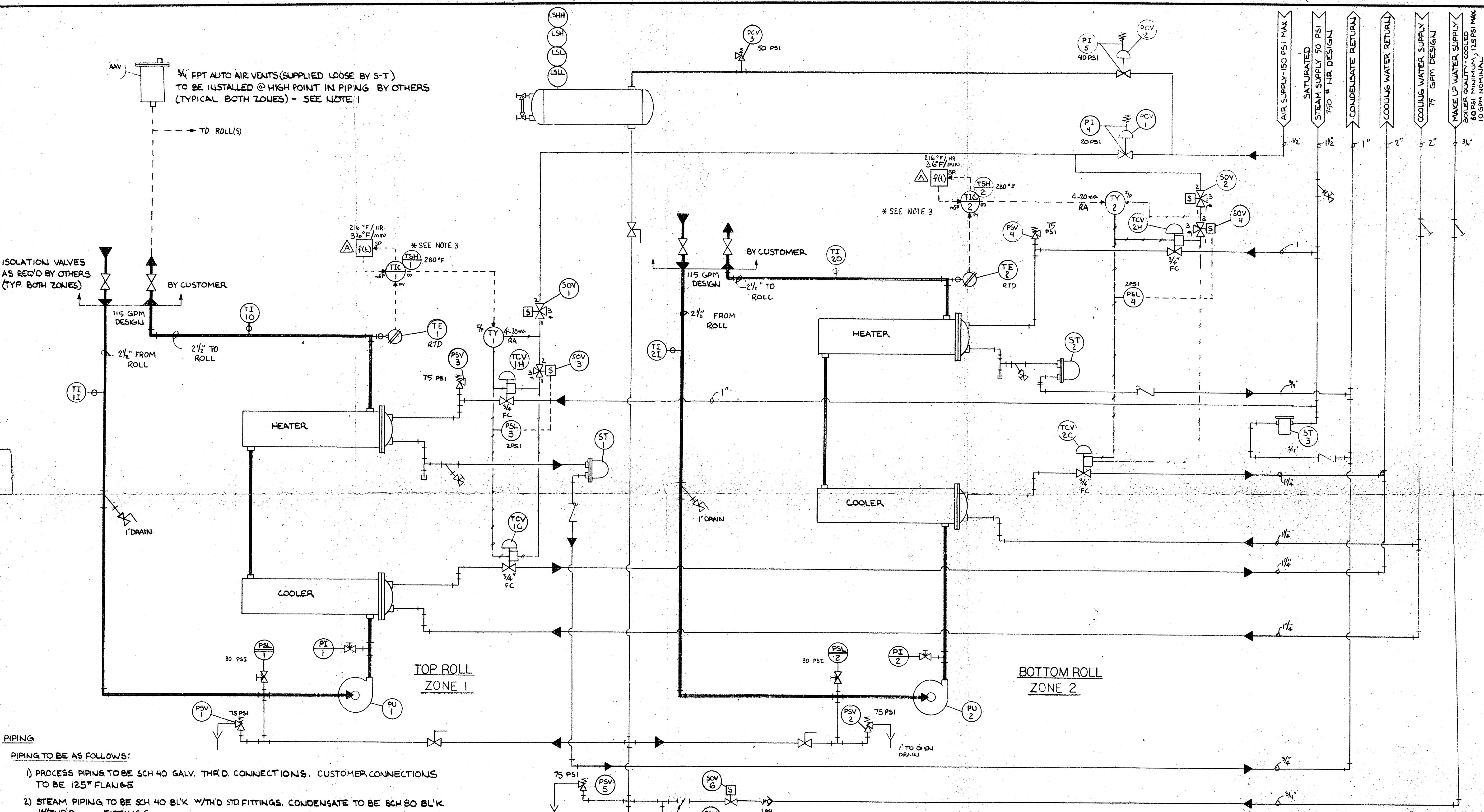
CRANE & COMPANY DALTON, MA.

ELECTRICAL SCHEMATIC

TCC-3115
HUNT & MOSCROP LTD.

SUPER-TROL DIV.
ENERCON SYSTEMS, INCORPORATED
CLEVELAND, OHIO U.S.A.

DWN R.P.	DATE 2/2/89	DRAWING NO.
CHK.	SCALE	D 89011
APPR.	55 89-4	REV.



PIPING

- PIPING TO BE AS FOLLOWS:
- 1) PROCESS PIPING TO BE SCH 40 GALV. THRD CONNECTIONS. CUSTOMER CONNECTIONS TO BE 125" FLANGE
 - 2) STEAM PIPING TO BE SCH 40 BL'K W/THD STD FITTINGS. CONDENSATE TO BE SCH 80 BL'K W/THRD FITTINGS.
 - 3) COOLING WATER PIPING TO BE SCH 40 GALV. W/STD. WT. THD. FITTINGS.
 - 4) OTHER PIPING TO BE SCH 40 GALV. W/STD. WT. THD. FITTINGS.

NOTES:

- 1) (2) AIR VENTS - SHIPPED LOOSE FOR FIELD INSTALLATION. (1 PER ROLL)
- 2) RELIEF VALVES & DRAINS TO BE PIPED TO OPEN DRAIN.
- 3) TEMPERATURE CONTROLLERS MOUNTED REMOTE IN MACHINE OPERATOR CONSOLE.

CRANE & COMPANY DALTON, MA.

FLOW SCHEMATIC

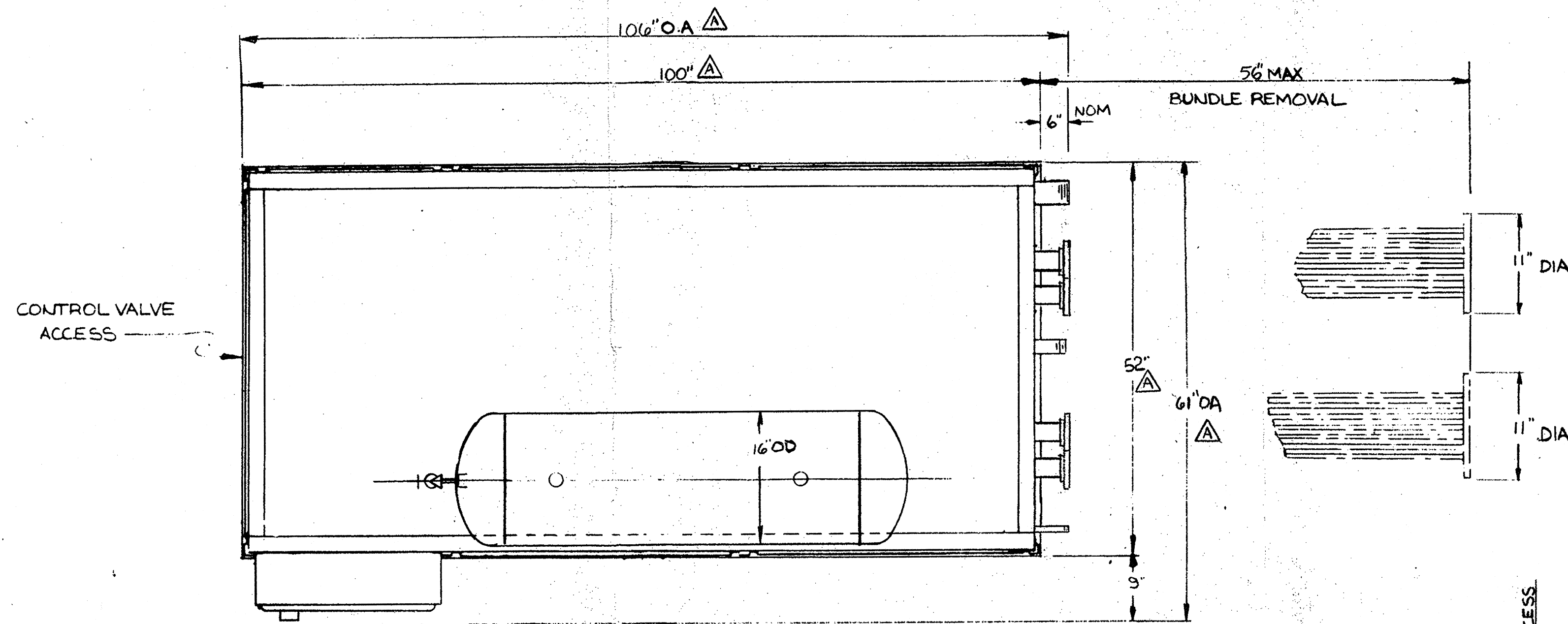
HUNT & MOSCROP, Ltd. TC2-S115

SUPER TROL SUPER-TROL DIV.
ENERCON SYSTEMS, INCORPORATED
CLEVELAND, OHIO U.S.A.

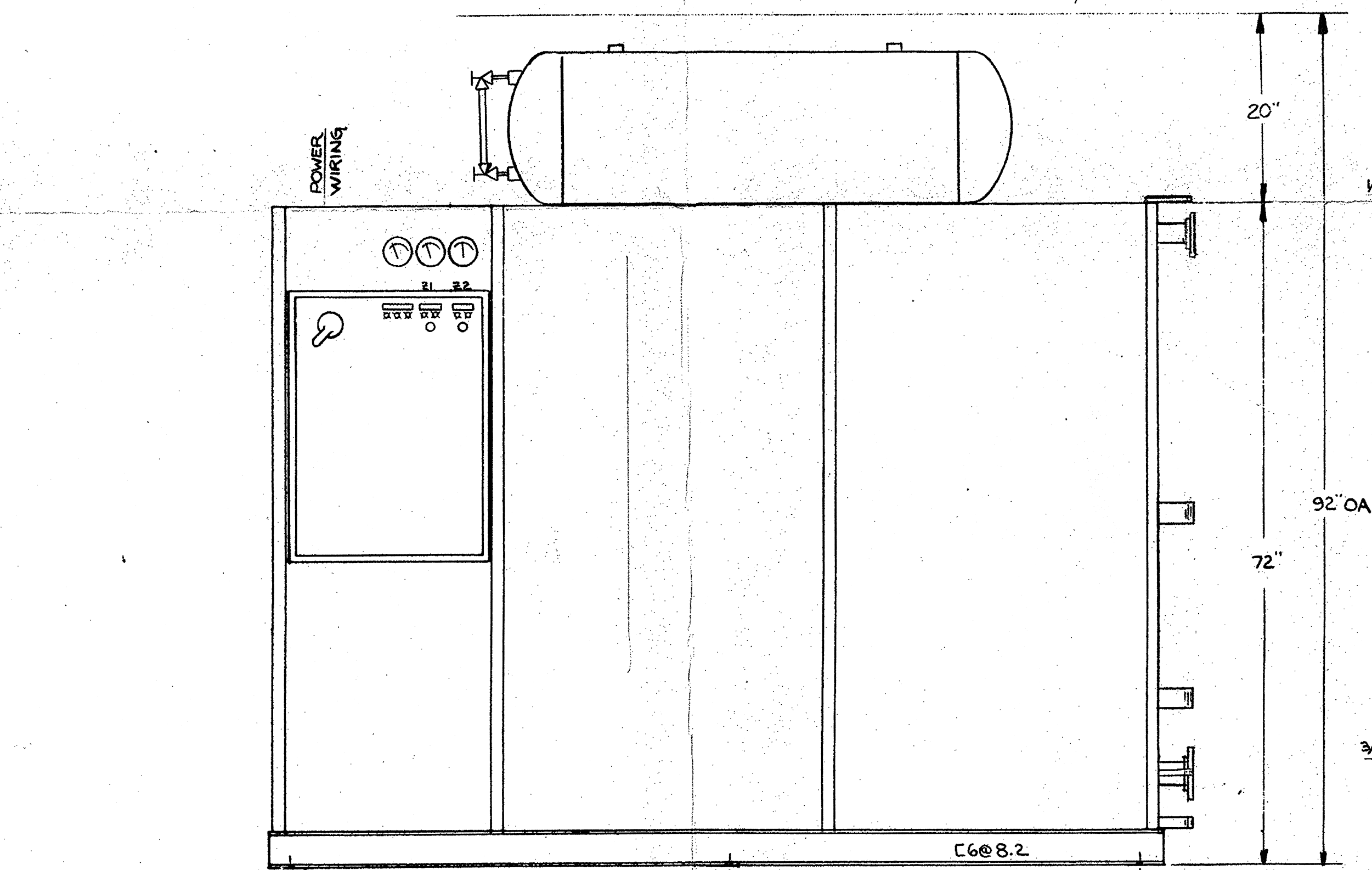
REFERENCE DRAWINGS		REVISION		DATE
D-89011	ELECT. SCHEMATIC			3/3/89
D-89010	GEN. ARRANGEMENT			

THIS DRAWING AND ALL INFORMATION CONTAINED HEREIN IS THE PROPERTY OF ENERCON SYSTEMS, INC. AND MAY NOT BE DISCLOSED OR USED WITHOUT WRITTEN PERMISSION.

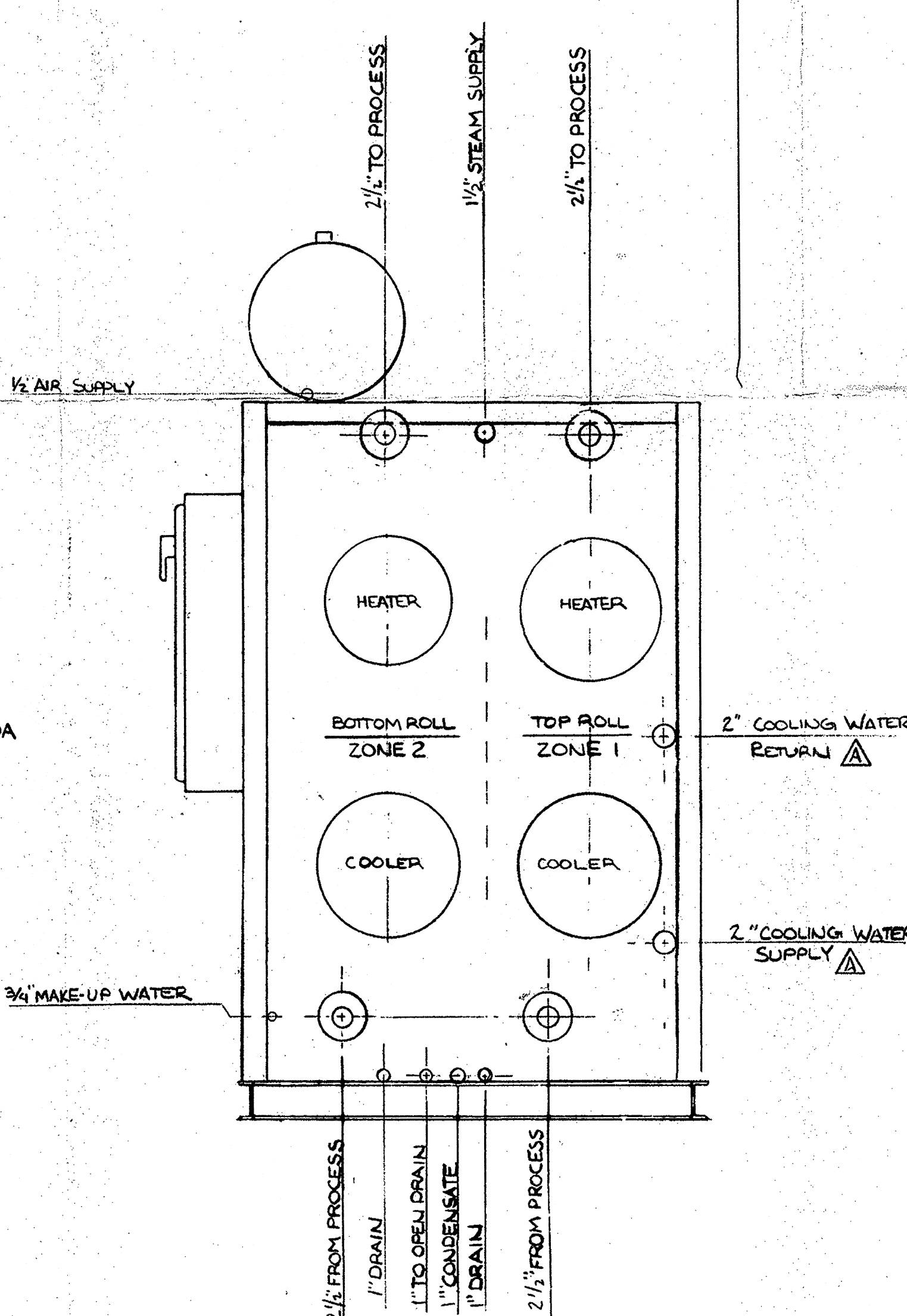
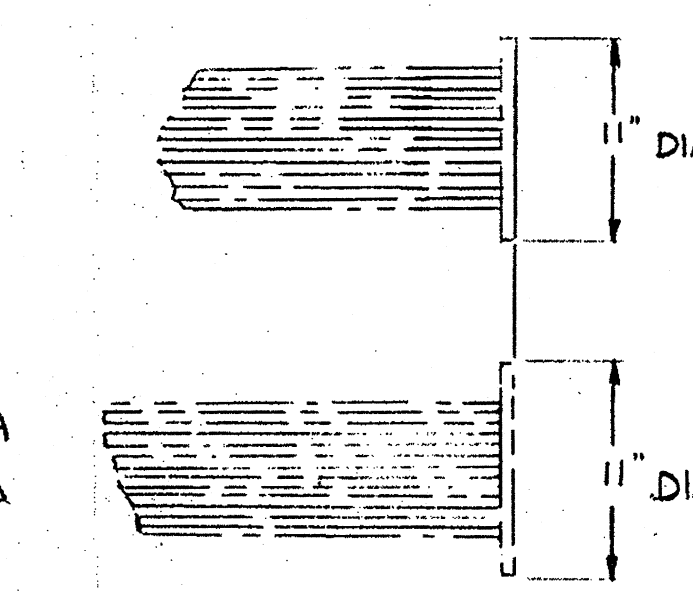
DWN. R.P.	DATE 2/2/89	DRAWING NO.
CHK.	SCALE 3/8" = 1'	D 89012
APPR.	SS 89-4	REV.



TOP VIEW



FRONT VIEW



PIPING END VIEW

NOTES:

- 1) PROCESS PIPING TO BE SCH 40 GALV. W/TH'D. CONNECTIONS. CUSTOMER CONNECTIONS TO BE 125# FLANGE. Δ
- 2) STEAM PIPING TO BE SCH 40 BLK. W/TH'D. FITTINGS. CONDENSATE TO BE SCH 80 BLK. W/TH'D. FITTINGS. Δ
- 3) COOLING WATER PIPING TO BE SCH 40 GALV. W/STD. WT. TH'D. FITTINGS.
- 4) OTHER PIPING TO BE SCH 40 GALV. W/STD. WT TH'D. FITTINGS.
- 5) RELIEF VALVES & DRAINS TO BE PIPED TO OPEN DRAIN.

REFERENCE DRAWINGS
 D- 89011 ELECT. SCHEMATIC
 D- 89012 FLOW SCHEMATIC

A	REISSUE, Add 4" TO WIDTH, 2" TO DEPTH	DJS	3/2/89
REV.	REVISION	BY	DATE
THIS DRAWING AND ALL INFORMATION CONTAINED HEREIN IS THE PROPERTY OF ENERCON SYSTEMS, INC. AND MAY NOT BE DISCLOSED OR USED WITHOUT WRITTEN PERMISSION.			

CRANE & COMPANY		DALTON, MA.	
GENERAL ARRANGEMENT			
HUNT & MOSCROP, Ltd.		TC2-S115	
		SUPER-TROL DIV.	
ENERCON SYSTEMS, INCORPORATED CLEVELAND, OHIO U.S.A.			
DWN. R.P.	DATE 2/1/89	DRAWING NO.	D 89010
CHK.	SCALE	REV.	
APPR.	55 89-4		