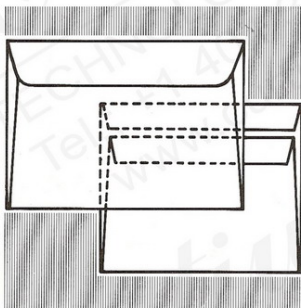
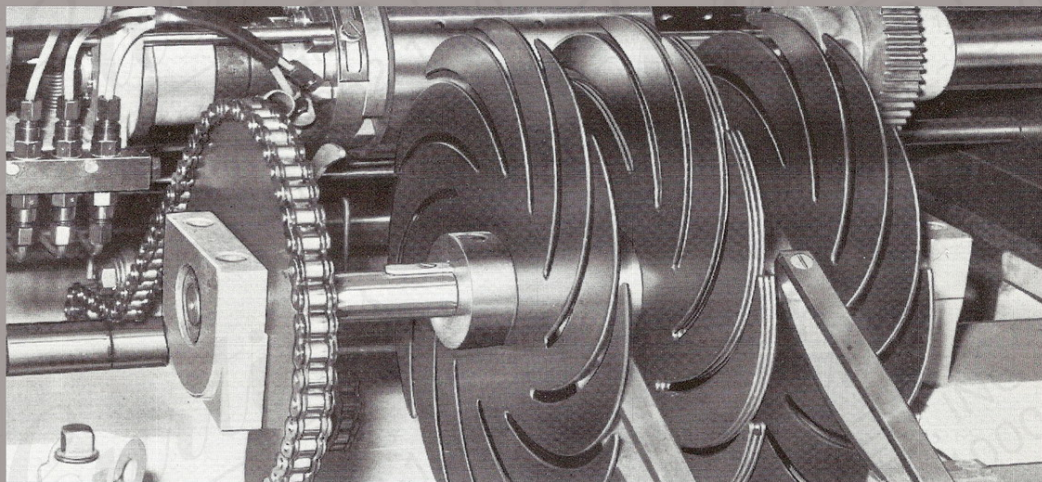


WINKLER+ DÜNNEBIER

WD

26C



Rotary Self-Seal Envelope Making Machine





Rotary Self-Seal Envelope Making Machine

HELIOS 26 C

Owing to their many advantages envelopes with self-seal gumming are becoming more and more popular.

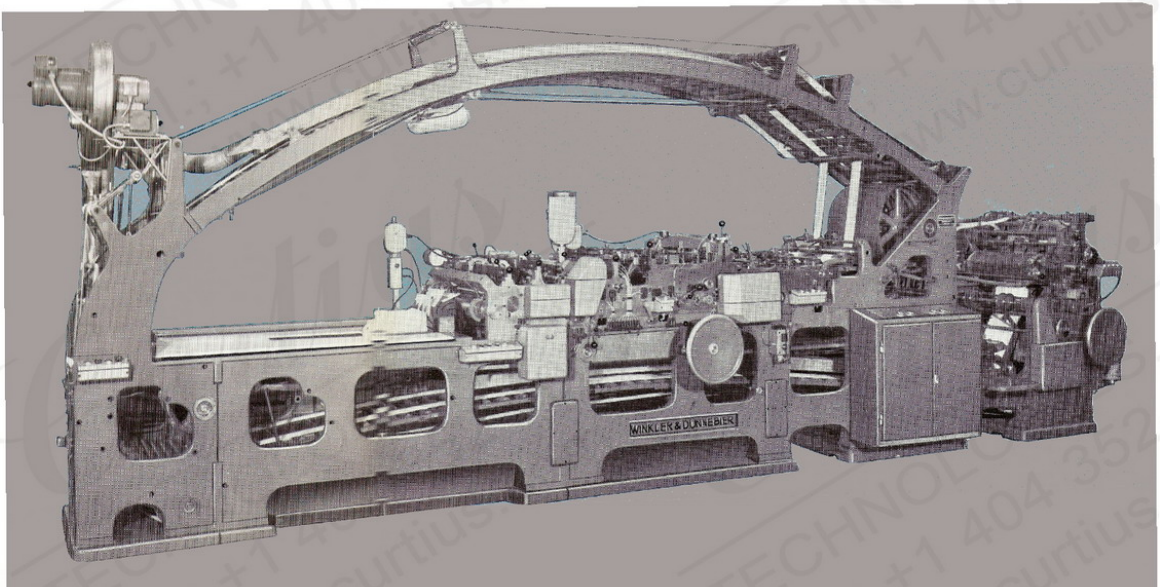
The blank-fed rotary envelope machine HELIOS 26 C meets this requirements, because on this machine all normal sizes of self-seal envelopes, as well as dextrin-gummed envelopes, can be manufactured.

Besides the flexographic inside printing unit the machine may also be equipped with a flexo outside printing unit increasing the versatility of this machine type.

The maximum paper width for the HELIOS 26 C is 520 mm = 20.1/2". The overall-length for the individual blanks to be handled is as follows:

diamond shapes	max. 350 mm,	min. 185 mm
	max. 13.3/4",	min. 7.1/4"
wallet shapes	max. 350 mm,	min. 185 mm
	max. 13.3/4",	min. 7.1/4"
„Constanzia“ sizes (booklets)	max. 341 mm,	min. 197 mm
	max. 13.7/16",	min. 7.3/4"

Like all other HELIOS envelope making machines for these size ranges, the Type 26 C Machine can be completed by a bander.

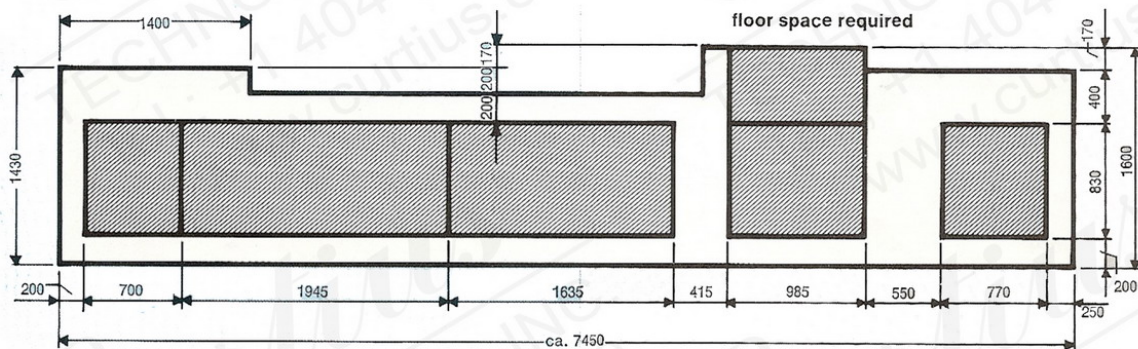
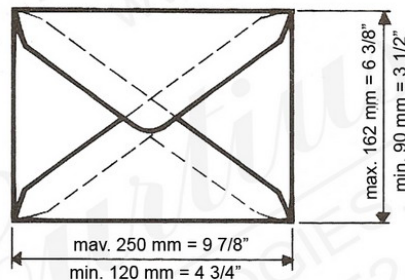
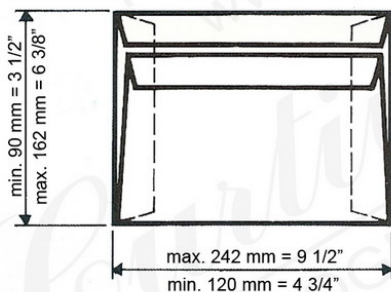
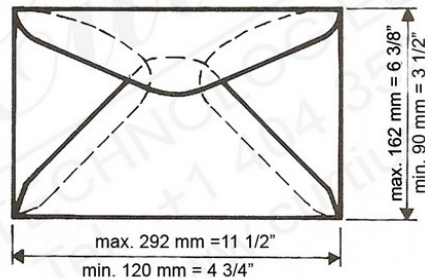
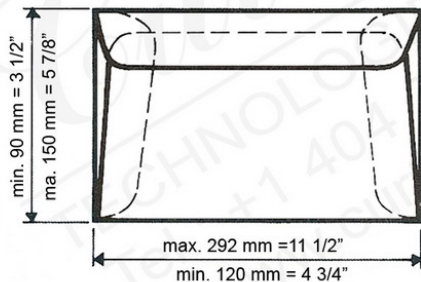




Rotary Self-Seal Envelope making Machine

HELIOS 26 C

size ranges



floor space required

1
300 x 500 mm
(11¹³/₁₆ x 19¹³/₁₆")
250
50 — 120 g/m²

inside printing unit (flexo)

maximum printing surface

max. output envelopes per minute

paper weights

power required

motors abt.
electrical heater abt.

net weight abt.

13 kVA
12 kW

7150 kg

Curtius

