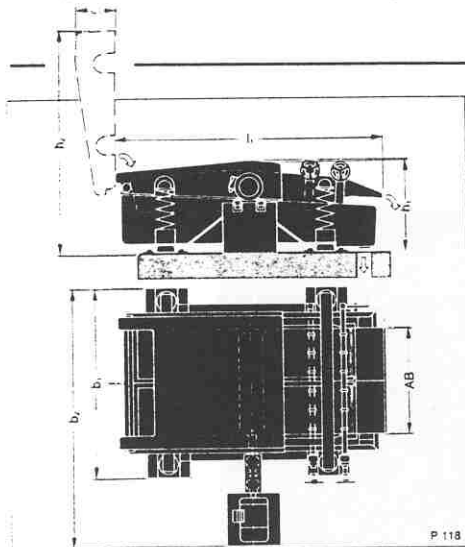


Vibration Screens, 500K and 1000 K



Dimensions [mm]	500 K	1,000 K
AB (op. width)	~ 500	~ 1,000
b ₁	1,040	1,800
b ₂	1,510	2,450
e ₁	290	405
h ₁	710	910
h ₂	1,480	2,530
l ₁	1,760	2,510

Technical data

		LC pulp screening		HC pulp screening	
		500 K	1000 K	500 K	1000 K
Screen size		500 K	1000 K	500 K	1000 K
Throughput*	t/24 hrs	3—11	10—33	5—23	15—65
Stock consistency	% b. d.	up to 2	up to 2	2—4.5	2—4.5
Screen perforation	mm dia.	1.4—4	1.4—4	5—10	5—10
Slot width	mm	0.6—1.6	0.6—1.6	—	—
Shower water consumption	l/min	10—20	30	20—30	60
Shower water pressure	bars	~ 2	~ 2	~ 2	~ 2
Speed	rpm	750	750	750	750
Motor rating	kW	1.1	3	1.1	3

* Depending on character of stock, consistency and screen perforation)

Universally applicable for the screening of practically all fibre materials, particularly stock containing spinning impurities (e.g. unsorted secondary fibres).

When used for the screening of high-consistency pulp, the screen removes large impurities such as film, plastics, wet-strength specks, wooden splinters and metal particles.

When used as low-consistency screen, the machine is an economic proposition in pulp mills, groundwood mills, deinking plants, and for the screening and rescreening of pulp in the stock preparation and approach-flow systems of paper mills.

Basic Arrangement

Robust steel vat with damming flap and cleanout hole, surfaces exposed to pulp rubber-lined. Sturdy screen basket of stainless steel with unbalance shaft and exchangeable screen plates. Externally mounted drive motor.

Special features

- Plane screen area vibrates on an air cushion.
- Application of perforated or slotted screen plates.
- In special cases fitted with additional rejects drainage facilities (e.g. for centrifugal cleaner rejects)

