

GENERAL MORGAN™

SHOWER ACTUATOR/OSCILLATOR

Since 1981. High reliability with thousands still running throughout the world.

- Easy installation - in-line or parallel and available as conversion kits for your existing showers.
- Handles any shower length.
- Standard stroke lengths
76.2, 127, 152, 203, 228.6, 254, and 305 mm
3, 5, 6, 8, 9, 10 and 12 inches
- Variable speeds with variable speed DC motors:
2 - 267 mm/min, 0.07 - 10.5 inches/min
- Fixed speeds available without control panel and with 110 VAC motors.
- Ideal for tough paper mill environments.
- “Ball Reverser” design is simple, no reversing switches, no need to reverse motor, instant turn around at end of stroke.
- Internal proximity switch provides automatic felt/fabric protection
- High reliability, General Morgan™ drivers have an unrivalled reliability record
- 12 month warranty.

GENERAL

The **General Morgan™ Actuator (formerly SRA-2000)** is the original model in a series of highly specialized shower actuators optimized for their respective range of applications.

The oil lubricated “Ball-Reverser” design has three balls in tracks in a ball reverser screw. The actuator can develop 1000 lbs of thrust. Length of stroke is fixed as determined by the length of screw flights installed in the unit.

Split bearings with UHMW Polyethylene liners and anti-rotation bars keep the shower in correct position and allow removing the shower from the paper machine and replacing it again without realigning the bearings.

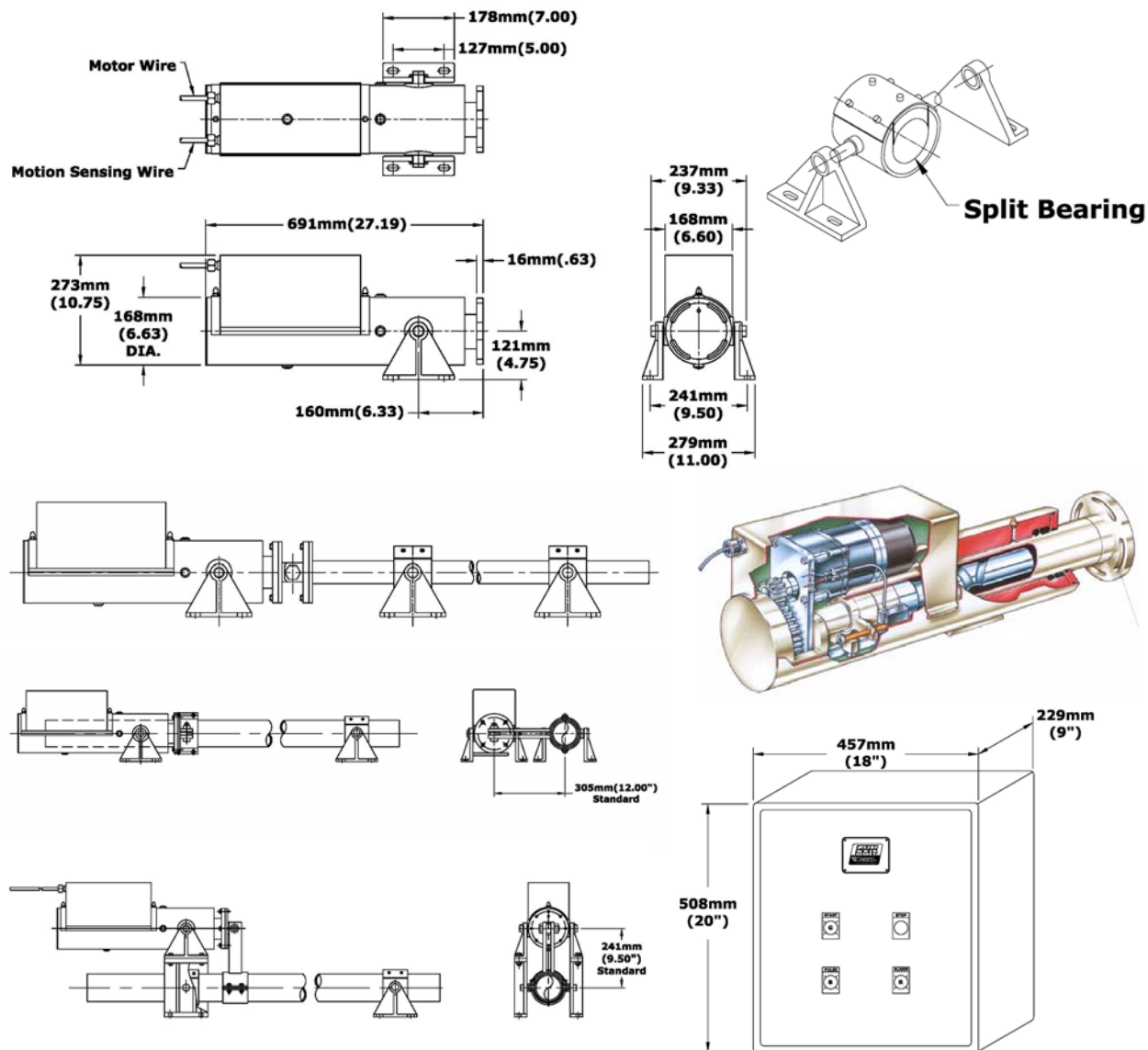


General Morgan™ (formerly SRA-2000) shower actuator, original three ball reverser introduced in 1981. Industry standard of “Complete Coverage Cleaning”.

TECHNICAL DATA

Type	General Morgan™ actuator for oscillating paper machine showers to achieve complete coverage cleaning.	Motor (Variable Speed)	0.125 horsepower (0.0932 kw) 130 VDC or 180 VDC, 0.9 amp. An integral gear box is attached for stroke rate. Gear box ratios 124:1 for 14.0 rpm, 216:1 for 8.3 rpm, and 432:1 for 1.6 rpm. Additional external gearing for standard ratios of 180:1, 300:1, and 600:1.
Manufacturer	CVN Vooner Paper Machinery, Greeneville, TN, USA	Motor (Fixed Speed)	0.125 horsepower (0.0932 kw) 110 VAC, 0.9 amp, 50/60 hz. Gear box ratios include some of the above.
Wetted Parts	All wetted parts 316SS	Motion Sensing	110 VAC
Lubrication	The General Morgan™ actuator ships with three (3) quarts 80-W-90 lubricating oil which is added by mill maintenance before installation. The actuator will not need additional lubrication during it's life.	Proximity Switch	Note two wires from motor housing, a motor lead and a proximity switch lead clearly marked as to how to connect. A separate power connection, 110 VAC, is needed for a panel board if used.
Maintenance	None	Weight	Actuator weight 120 lbs. (54.4 kg) (without trunnions and oil))
Control Panel	NEMA 4X, H - 20 inches (508 mm), W - 18 inches (457 mm), D - 9 inches (229 mm), door safety switch, material fiberglass. 110 VAC power supply, start/stop buttons, Three (3) lights: start, pulse, and alarm. 4-20 ma connections for DCS.	Noise	less than 80 decibels

DIMENSIONS AND MOUNTING



SERVICE

- Spare actuators, parts, and rebuild services are located in Greeneville, Tennessee.
- Onsite technical service is available from Greeneville, Tennessee.