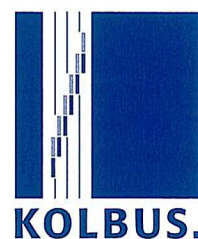


# KOLBUS → Technical Data

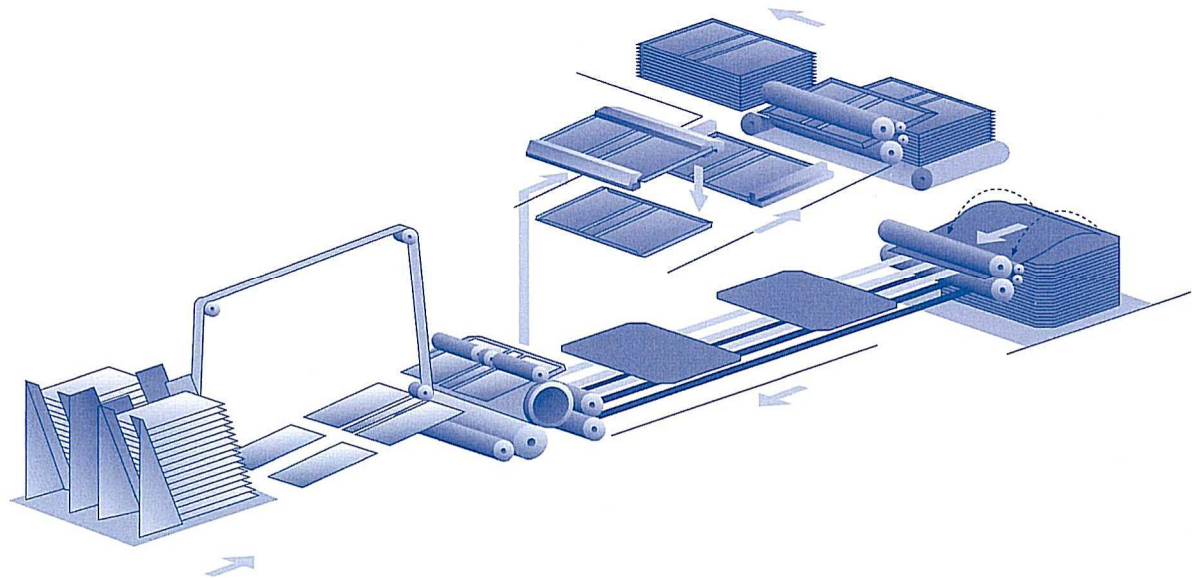
## Casemaker

### DA 260



For fully automatic production of book cases,  
files, display cards, calendar backs or game  
boards.





## AVAILABLE EQUIPMENT

### STANDARD EQUIPMENT

Board magazine for manual loading
Centre strip infeed for the spine strip made of roll material, holding capacity for 2 centre strip rolls, longitudinal and cross cutting device
Cloth feeder for interval charging with pile magazine, max. stacking height 350 mm
Miss cloth control during the separation process
Counter stacker delivery with following roller conveyor incl. table, overall length approx. 3,000 mm (max. stacking height 100 mm)
Movable gluing station for processing hot-glue with glue preparation unit in the premelter, heated glue application roller and scraper roller
Cloth cylinder with grippers and exchangeable plates for rubber pad (5 pcs. 500 mm wide and 5 pcs. 720 mm wide, incl. 10 pieces rubber pads)
Glue application adjustment from outside of the machine
Viscosity control device for automatic water supply to ensure constant glue viscosity
Pressing roller device for crease-free connection of the cover material with boards and spine strip
Device for producing padded cases (max. thickness: 8 mm with padding, to be pressed to 4 mm)
Automatic case counter
Single case request for control purposes done from the operating side
Infinitely variable drive
Safety standard according to CE directives and specifications

### OPTIONAL EQUIPMENT

Board centre strip magazine (boards: height min. 130 mm)
Chopper for the centre strip waste
Device for small format
Size range opened case: min. 154 x 100 mm (one-piece case: min. 140 x 100 mm)
<i>Cloth</i>
Width: min. 170 mm
Height: min. 130 mm (inside lining)
<i>Boards</i>
Width: min. 70 mm
Height: min. 100 mm

### Device for large format

Size range opened case: max. 670 x 405 mm

Cloth height: max. 435 mm

### Device for inside lining with cold glue

Optional equipment for the device for inside lining with cold glue: Device for cooling down the glue application rollers

Corner cutter (operation by hand) – for mounting in the tool cabinet

Pneumatic corner cutter for single corner cutting, model ECK 100 (for mounting in the tool cabinet) or for double corner cutting, model ECK 200 (movable unit)

Dimensions of model ECK 200:

Length: 1,100 mm

Width: 650 mm

Total height: 1,450 mm

- Two hand operating
- Fixed stack by foot operation
- Cutting height max. 80 mm
- Safety standard according to CE directives and specifications

The customer has to provide:

Factory line pressure: 8 – 10 bar

Compressed air supply: see extra sheet

### Tool cabinet

Template for preparing rubber pads (device for fitting the rubber pad on its plate outside the machine)

One set (5 pieces) additional plates for rubber pad – 720 mm

One set (5 pieces) additional plates for rubber pad – 500 mm

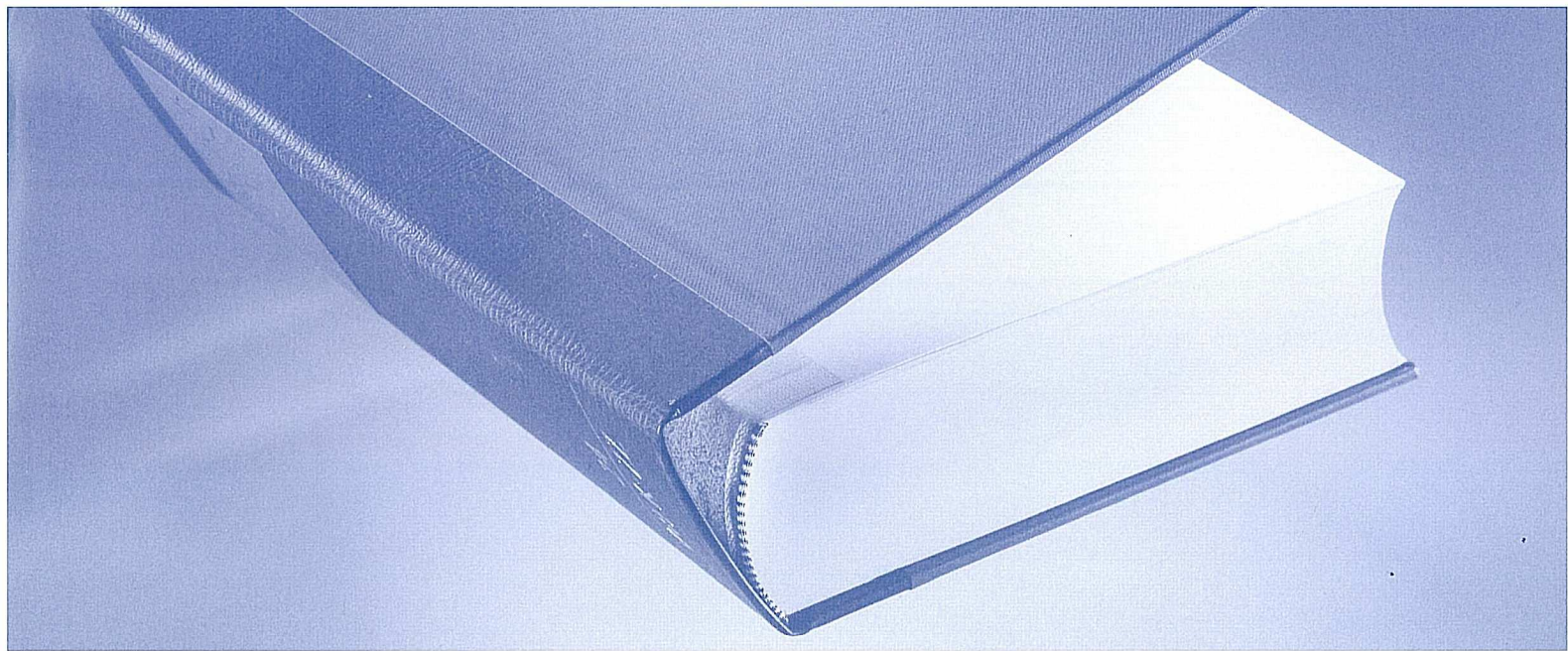
One set (5 pieces) additional rubber pads

Equipment for remote diagnosis, coupling via telephone network

Equipment for remote diagnosis, coupling with the line remote diagnosis server, model AFS 701

- Alternative equipment for the viscosity control device
- with pump and water tank/for manual filling or
  - water supply required





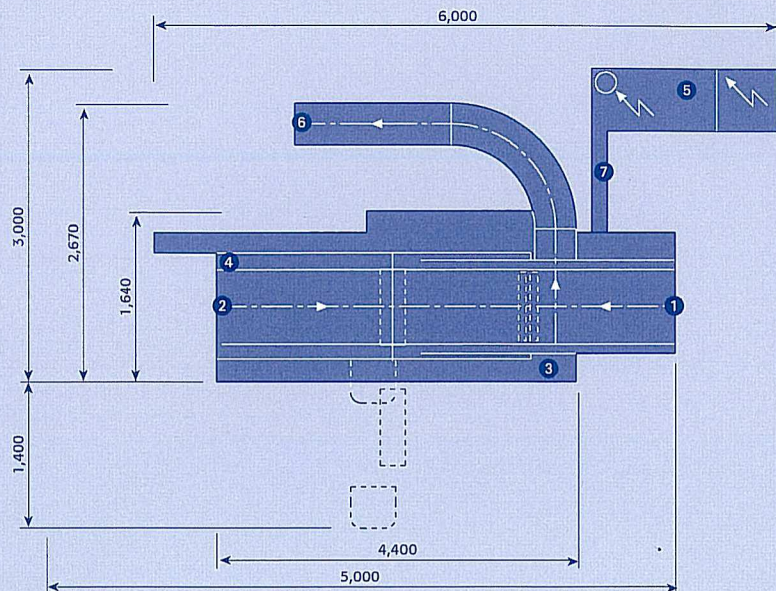
## Casemaker **DA 260**





# DA 260

- ① Infeed cloth
- ② Infeed boards
- ③ Connection compressed air
- ④ Water supply max. 8 bar
- ⑤ E-cabinet height approx. 2,000 mm
- ⑥ Delivery cases
- ⑦ Cable channel on the floor



## TECHNICAL DATA

### CASE

Size range opened case (min.) 205 x 140 mm

Size range opened case (max.) 670 x 390 mm

Joint width 4 – 15 mm

Width between boards 14 – 120 mm

Turn-in width, closed 8 – 15 mm

### CLOTH

width 223 – 708 mm

height 130 – 428 mm

### BOARDS

thickness 1 – 4 mm

width 95 – 328 mm

height 140 – 390 mm

### BOARD CENTRE STRIP

thickness 1 – 4 mm

width 6 – 90 mm

### CENTRE STRIP ROLL

thickness 0.3 – 0.6 mm

width 6 – 90 mm

### MECHANICAL SPEED

up to 40 cycles/min

Net production is subject to sizes, materials etc

The customer has to provide:

### COMPRESSED AIR REQUIREMENT

28 Nm<sup>3</sup>/h

### FACTORY LINE PRESSURE

6 bar

### COMPRESSED AIR SUPPLY

see extra sheet

### MACHINE DIMENSIONS

length 5,000 mm

width 3,000 mm

height 2,200 mm

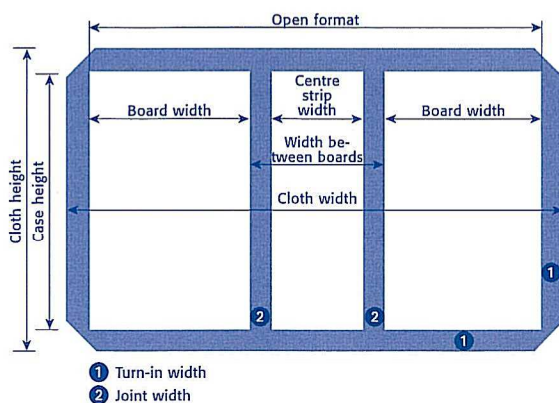
### WEIGHT

5,100 kg

### ELECTRICAL EQUIPMENT

3 phase, 400 volt/N/PE, 50 cycles

KOLBUS GmbH & Co. KG  
Osnabrücker Straße 77  
D-32369 Rahden  
Tel. +49 (0) 5771 71-0  
Fax +49 (0) 5771 71333  
www.kolbus.com



- ① Turn-in width
- ② Joint width