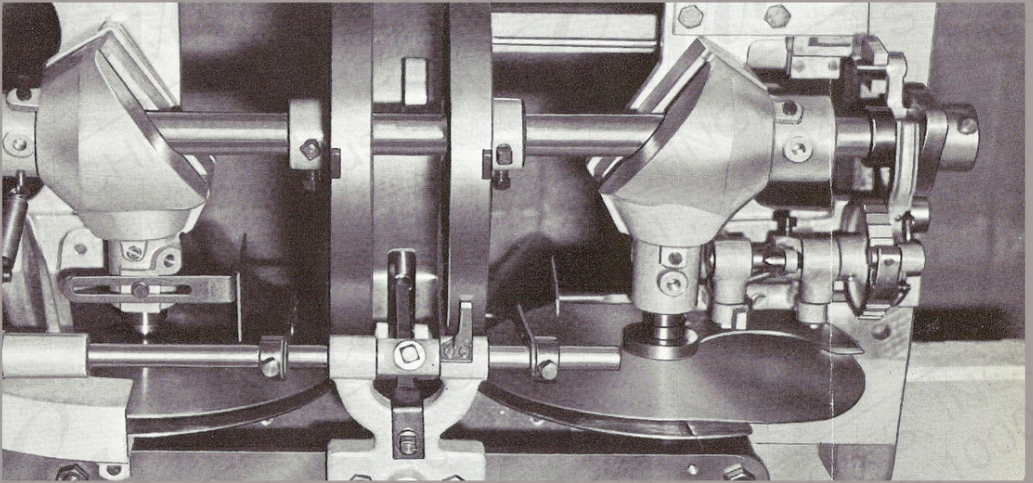


WINKLER+ DÜNNEBIER

WD

26 FF/FFG



Rotary Envelope Machine



The HELIOS 26 FF is suitable for the economic manufacture of tissue-lined envelopes. Regarding its most important features, this machine has been developed from our approved Type 26 G Machine which has been combined with a tissue-lining attachment. The envelopes to be lined are electronically detected.

The machine can be supplied in various models:

- 26 FFO** tissue-lining and folding machine with pellet seal flap gumming device. On request, the machine can be equipped with a roller gumming device with pneumatic throw-off.
- 26 FF** like 26 FFO, however, additionally with a shape flap gumming device allowing the application of adhesive to any shape of seal flap. A shaped gummer applies the seal flap gumming onto the individual blank.
- 26 FFG** like 26 FF, however, with the additional possibility of incorporating up to two flexographic outside printing units and one flexographic inside printing unit.
- 26 FFOG** like 26 FFG, but without shape gumming device.

The possibility of adapting printing units to the versions 26 FFG resp. 26 FFOG enables you to use these machines for different jobs should there be insufficient orders for tissue-lined envelopes.

Besides the simple operation of the machines of this type the high quality of the tissue-lined envelopes made on the 26 FFs is noteworthy.

The range of this machine covers the most called-for sizes. The maximum paper width is 520 mm = 20.1/2".

The overall length of the individual sizes is as follows:

diamond shapes	max. 335 mm, max. 13.1/8",	min. 170 mm min. 6.11/16"
wallet shapes	max. 320 mm, max. 12.5/8",	min. 170 mm min. 6.11/16"
„Constanzia“ sizes (booklets)	max. 265 mm, max. 10.7/16",	min. 170 mm min. 6.11/16"

Dimensions for tissue-lining:

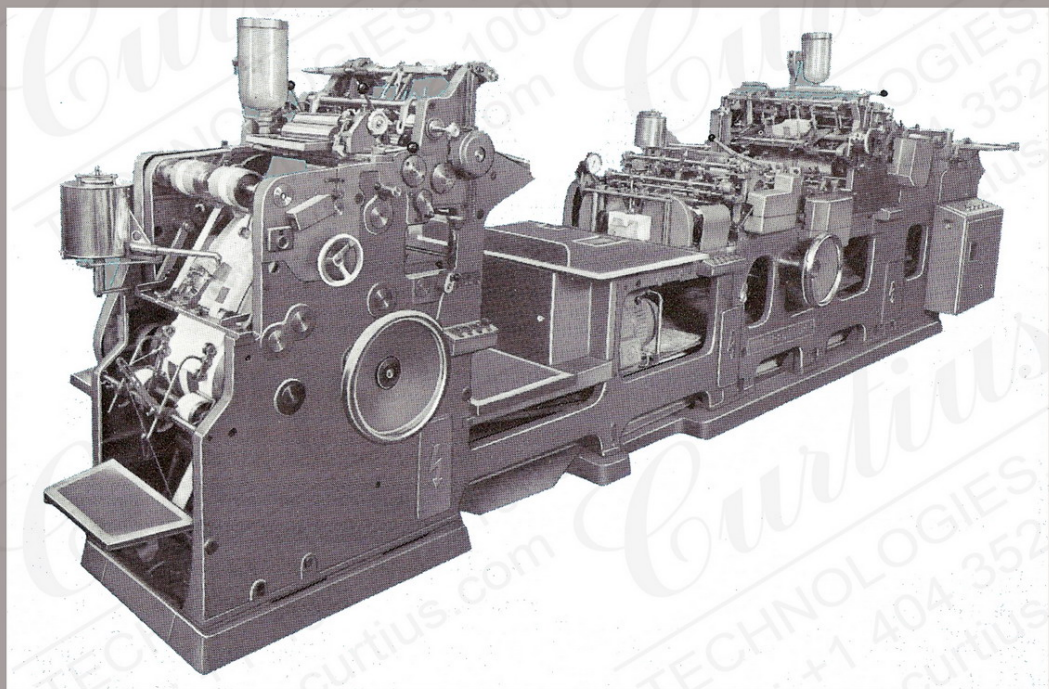
width	max. 450 mm, max. 17.23/32",	min. 112 mm min. 4.3/8"
length	max. 145 mm, max. 5.11/16",	min. 130 mm min. 5.1/8"





Rotary Envelope Machine

HELIOS 26 FF/FFG



220

50 — 120 g/m²

30 — 40 g/m²

14,5 kVA

12 kW

7000 kg

max. output envelopes per minute

paper weights

tissue lining weights

power required

motors abt.

electrical heater abt.

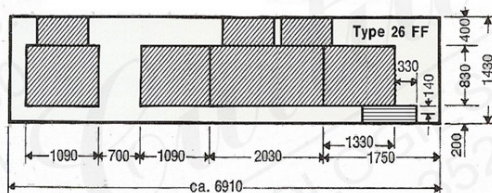
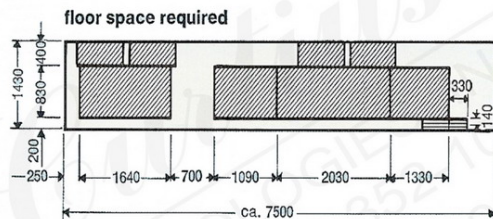
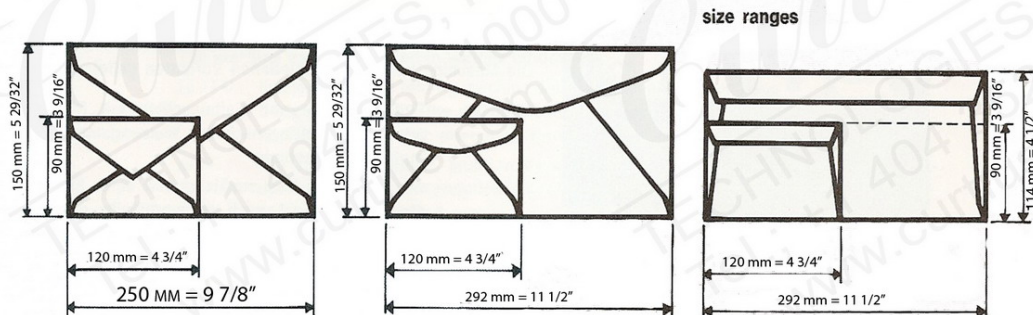
net weight abt.





Rotary Envelope Machine

HELIOS 26 FF/FFG



22 FFG

1

inside printing unit (flexo)

2

outside printing units (flexo)

300 x 500 mm
(11¹³/₁₆ x 19¹¹/₁₆")

maximum printing surface

220

max. output envelopes per minute

50 — 120 g/m²

paper weights

30 — 40 g/m²

tissue lining weights

17 kVA

power required

12 kW

motors abt.

electrical heater abt.

8000

net weight abt.

