

For installation on practically every paper grade and in many hot stock refining and pressure washing systems; ideal for a large number of paper machine primary and secondary head-box applications. Cast of stainless, bronze and cast iron . . . epoxy coated.

**All Black Clawson Selectifier® Screens feature
Simplicity and Ruggedness of Design**

Single cylinder, wide open construction permits
easy inspection and maintenance
easy adjustment of air-foil bars
easy exchange of cylinder

Single cylinder construction also allows the speed of the rotating element to be properly regulated—no waste of horsepower or inefficiency of performance.

Non-contacting, air-foil bars continuously sweep the inner surface of the screen, creating a pulsating action which increases efficiency of the cleaning, prevents plugging and effects uniform fiber dispersion.

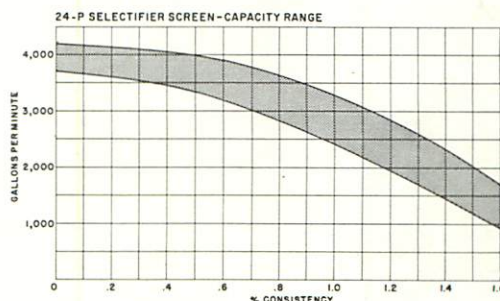
Major Benefits of Pressurized Selectifier Screening

Ahead of the Paper Machine:

1. It does an excellent job of final stock cleanup, removing pins, scale, shives and other unwanted material from the stock.
2. Deflocculates fiber bundles in the stock—improves formation on the wire.
3. Increases production—there are fewer breaks because stock lumps and slime slugs are eliminated.
4. Protects against felt and wire damage caused by foreign objects.
5. Relieves foaming conditions.
6. Plus many others.

In the Pulp Mill

1. High consistency pressurized screening and fractionation control permit production of newsprint groundwood and high grades of groundwood from one grinder furnish.
2. Reduces decker, pump, pipe and space requirements.
3. Enclosed system reduces air entrainment, foam and slime problems.
4. Lower installation cost and power consumption per ton.
5. Direct control of reject rates.
6. Automatic control of flows and pressures.
7. Flexibility in choice of location.
8. Less operator supervision and low mechanical maintenance.



IMPORTANT: Good screening requires the best equipment available employed in a properly engineered system. Black Clawson engineers, with an accumulation of over twenty-three years experience with 2,600 Selectifier Screens in operation, will assist you in your installation to ensure the maximum efficiency of your cleaning system.

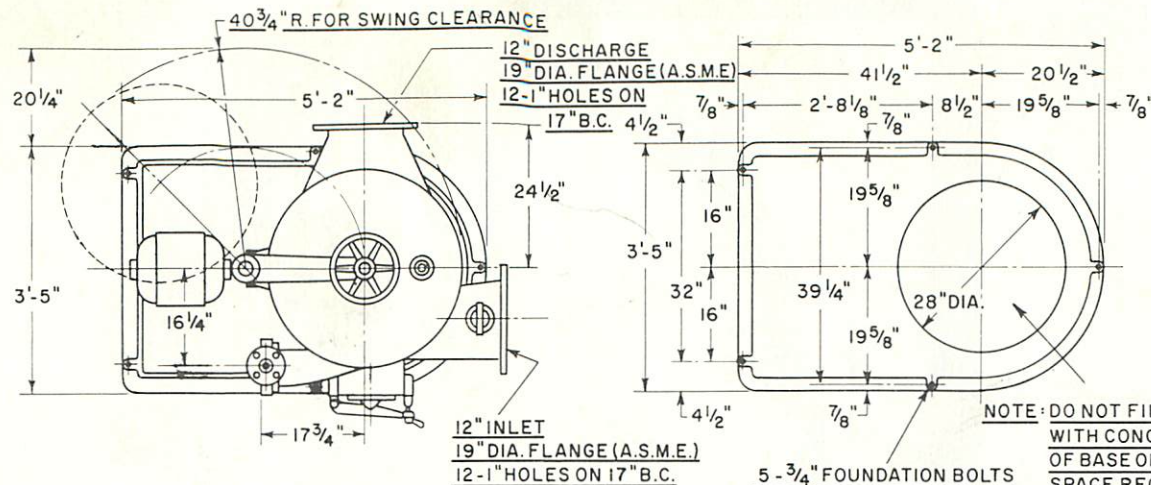
The Black Clawson Company



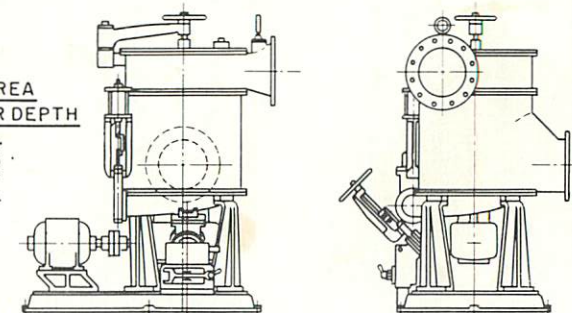
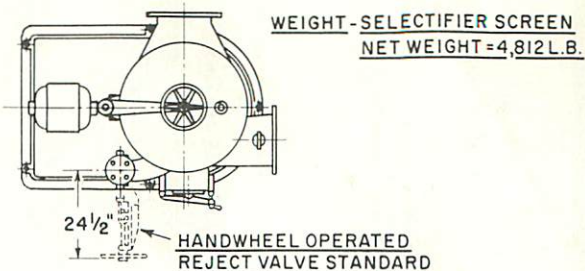
Shartle Division / Stock Preparation Systems

Middletown, Ohio / Phone 422-4561

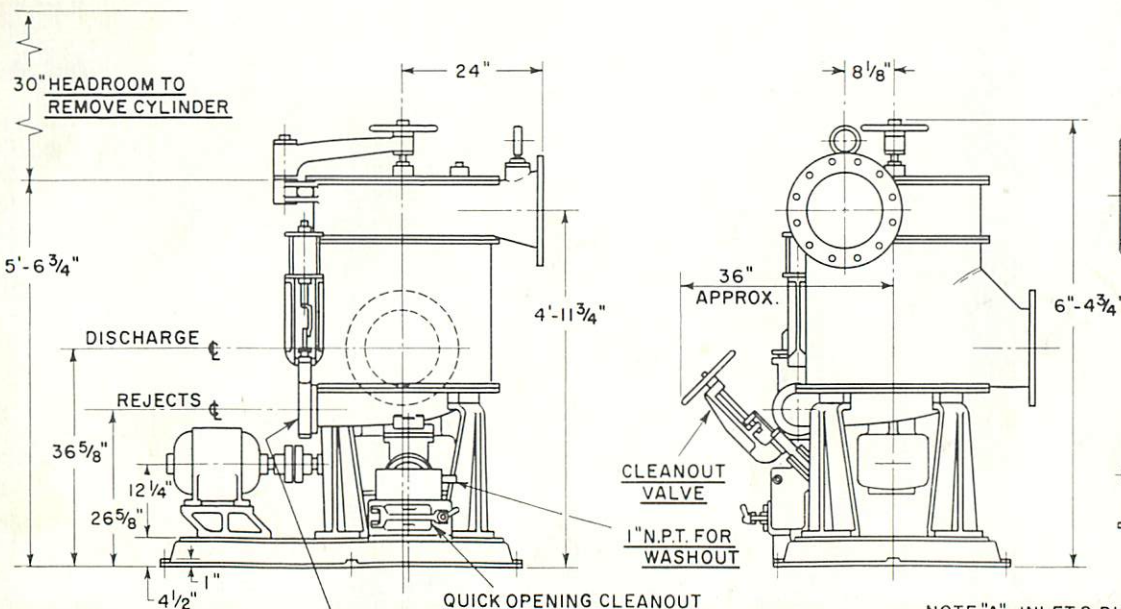
— NO. 24 P SELECTIFIER SCREEN, LAYOUT TEMPLATES —



PLAN



SCALE 1/4" = 1'-0"

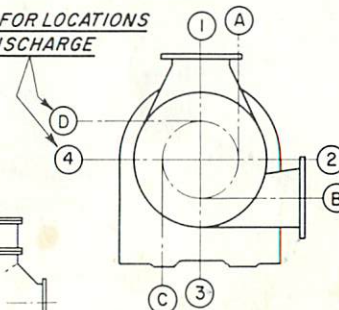


QUICK OPENING CLEANOUT

HAND OR PNEUMATIC OPERATED REJECT VALVE CAN BE SUPPLIED

ELEVATION SCALE 3/8" = 1'-0"

SEE NOTE "A" FOR LOCATIONS OF INLET & DISCHARGE



SCALE 3/16" = 1'-0"

NOTE "A" - INLET & DISCHARGE CAN BE MOUNTED IN ANY 30° POSITION EXCEPT FOR INTERFERENCE WITH REJECT VALVE.

CONSULT SHARTLE ENGINEERING FOR LOCATIONS IN AREA BETWEEN POSITION 2 AND 3.

10 TO 40 H.P. DRIVE MOTOR

THE BLACK CLAWSON COMPANY
SHARTLE DIVISION
MIDDLETOWN, OHIO

"NO. 24 P" SELECTIFIER SCREEN
LAYOUT TEMPLATES

E-67-E