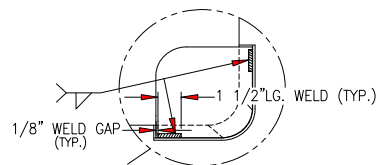


TOP VIEW



1/2" LG. WELD (TYP.)
1/8" WELD GAP (TYP.)

10 GA. SS LIFTING LUG PAD (4) REQUIRED [C]

FORMED DRUM OPENING WITH SS316L DRUM COVER #360500 WITH 3" X 2" POLY REDUCER AND VACUUM VENT #345108, PLATED LEVER LOCK CLAMP RING #323104, (CUSTOMER TO SUPPLY & INSTALL LID GASKET)

[D] [E] [F]

APPROVAL DRAWINGS

PLEASE LOOK OVER DRAWING AND MARK AS REQUIRED BELOW

APPROVED WITH NO CHANGES, PROCEED WITH FABRICATION

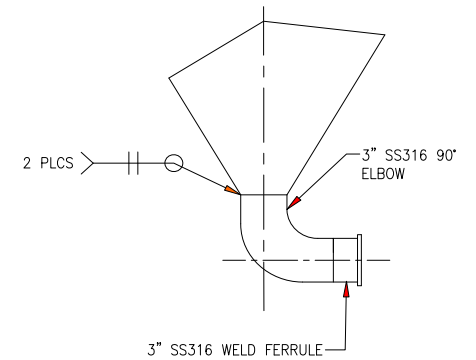
APPROVED AS NOTED, PROCEED WITH FABRICATION

NOT APPROVED, RESUBMIT APPROVAL DRAWINGS

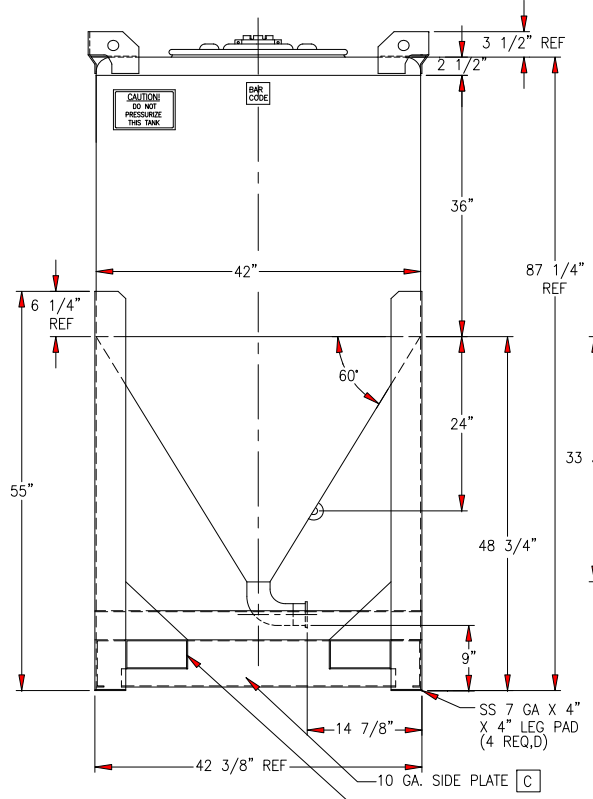
SIGNATURE _____

DATE _____

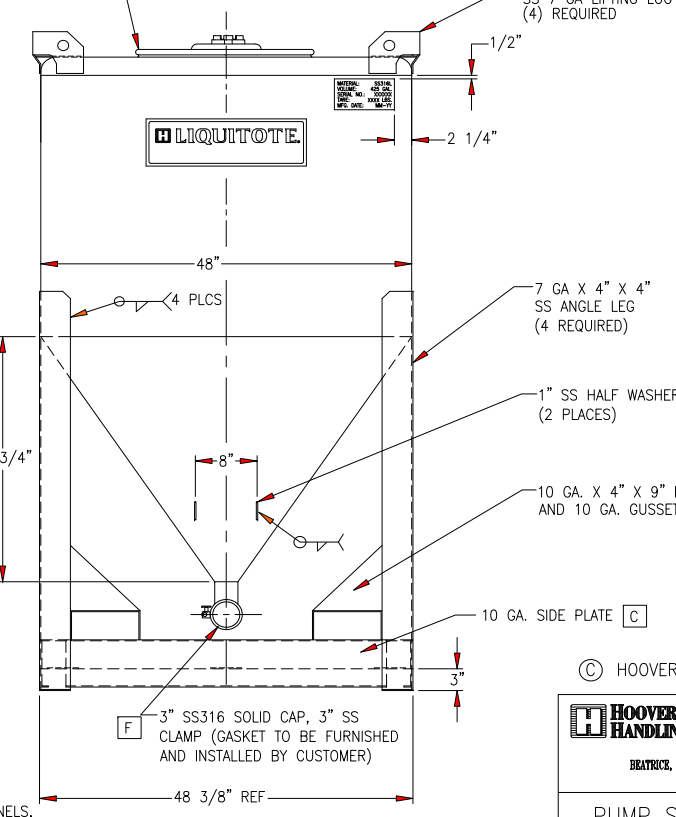
SYMBOL	REVISION	DATE	BY
A	MOVED HOLES ON THE LID TO 7 3/8" WAS 8" ECR 4054	11-9-99	MWK
B	ADDED NOTE #10 PER ECR #4063	12-1-99	TJZ
C	ADD SIDE PLTS, REVISED FC., AND REMOVED FTG PER ECR #4077	12-6-99	TJZ
D	CHGD DRUM CVR FROM 324225 TO 361423 W/VAC VENT ECR #4140	3-2-2000	DED
E	LEVER LK CLAMP RING #323104, #345108 VAC VENT, ECR5021	5-16-2003	SLK
F	CHG TO DRUM CVR WITH 3" HNP.L, REMOVED REDUCER ON OUTLET	5-14-04	DED



DETAIL -A-



FRONT VIEW



SIDE VIEW

- NOTES:**
1. REMOVE ALL BURRS AND SHARP EDGES.
 2. ALL WELDS TO BE FREE OF PITS, CRACKS, & CREVICES
 3. TIG WELD REPAIRS & ADD FILLER (NO SWEAT WELDS)
 4. THIS TANK WILL DOUBLE STACK.
 5. TANK TOP, BODY, & HOPPER ARE 10 GA MATERIAL.
 6. SOME HIDDEN LINES OMITTED FOR CLARITY
 7. SWEAT WELD ALL INSIDE WELDS
 8. DRAWING CREATED FROM 302606 REV. A.
 9. BOX LOOSE PARTS SEPERATELY
 10. STRIP AND CLEAN INTERIOR WELDS
 11. FOR FRAME WELDING INSTRUCTIONS SEE DWG #302622

© HOOVER MATERIALS HANDLING GROUP, INC., 1999, 2000, 2003, 2004 [FL-A]

HOOVER MATERIALS HANDLING GROUP, Inc.
BEATRICE, NEBRASKA

This drawing is loaned without other consideration than the agreement and condition that it is not to be reproduced, copied, or otherwise disposed of directly or indirectly, and is not to be used in whole or in part to assist in making or to furnish any information for the making of drawings, prints, apparatus or parts thereof. The acceptance of this drawing will be construed as an acceptance of the foregoing conditions, and as an admission of the exclusive ownership of Hoover Materials Handling Group, Inc. in and to this drawing and the information displayed therein. Significant parts of the described items, are subject matter of issued patents or pending patent applications in the United States and principal foreign countries. Unless certified, this drawing and items shown on this drawing are subject to change at any time.

PUMP SYSTEMS	DRAWN	DED	10-4-99	APPROVED	
	CHECKED			CERTIFIED	
				NEXT ASSY	SCALE 1:12
425 GALLON TANK 42X48/22/10ALL 60" HOPPER/3" ELBOW OUTLET	MATERIAL	316L SS IN PRODUCT ZONE	DRAWING NO.	371420	REV. F