



**SAVAGE
BROS. CO.**
SINCE 1855

A 21st Century Company . . . with 19th Century Craftsmanship

1125 Lunt Avenue
Elk Grove Village, IL 60007-5023 USA

Phone: 847-981-3000
USA Fax: 800-2-SAVAGE
World Fax: +847-981-3010
E-mail: info@savagebros.com
Web: www.savagebros.com

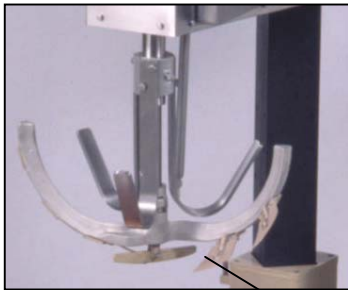
SAVAGE BROS CO.

FireMixer™

Everything you need for high batch production,
superior control, and maximum flexibility in use.

Warrior Single action
agitator is shown here, with
fixed position breaker bar.

Agitator for Double action,
counter-rotating **Chief** is shown
below. Double U-shaped center
blades provide extra stirring and
blending action required for
various candy types.



Spring-Loaded Scrapers wipe
the entire heated bowl surface
... helps prevent localized hot
spots to give you maximum
control of batch cooking even
at highest temperatures.

FireMixer uses Savage Spun
Copper or Stainless Steel Kettles
in 24" diameter, in depths from
12.5" to 18" ... maximum working
capacities from approximately 12
to 24 gallons for non-foaming
products

Ceramic insulation minimizes
heat loss to room when cooking

Variable Speed Drive ...
you can vary agitator
speeds from 30 to 60 RPM

Hydraulic Lift Mechanism
completely clears the kettle
at the touch of a button.

Control Panel is
conveniently located
for easy operation –
panel and controls
are described on
next page

Stainless Steel Drip Pan
swings under agitator to
catch sticky drips

Kettle Holder System
locates kettle accurately
and keeps handles clear
for easy lifting ... including
the easiest lifting using
Savage's LifTILTruk .

Manual Gas Throttle system
– adjusts the rate of heating
with this quarter-turn control
valve ... gas flame is visible
under kettle so flame
intensity can be observed
and adjusted precisely.

Also Available:
High-Speed S-92 FireMixer,
with *infra-red heat* .

Love the S-92 but don't have a
gas supply? Then ask to see our
S-92 12KW Electric FireMixer





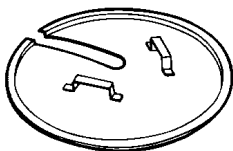
Cream Can Assembly

Stainless steel can with valve on articulated arm to drip feed milk products into the batch.



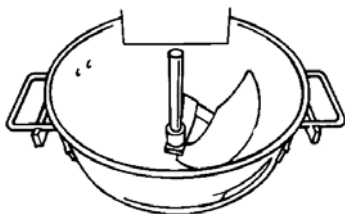
Drip Pan Assembly

Stainless steel plate on articulated arm to catch drippings off agitator when kettle is removed.



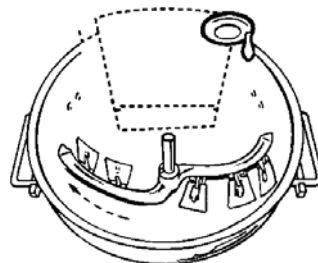
Kettle Cover

Stainless steel cover with slot; can operate agitator with cover on kettle.



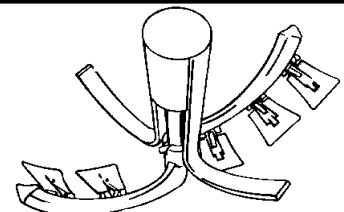
Nut-Stirrer / Agitator

Plow-type blade gives efficient "roll-over" or "folding" action for roasting or glazing nuts.



Single-Action Agitator

Standard on all FireMixers; only agitator on Warrior model. Spring-loaded dairy metal scrapers on variable speed arm.



Double-Action Agitator

Chief model adds a unique double hook counter-rotating inner agitator. For high torque applications, upgrade to 3-hook anti-shear inner agitator.

Large, bright temperature read-out can be seen from across the room – gives accurate temperature read-out to +/- 1 degree F.

Large, illuminated push/pull switches control power and burner ignition

You get fast, push-button agitator control.



Digital temperature control – Enter your required temperature set-point on the control panel ... FireMixer takes batch up to this temperature and then "cycles" heat on and off to maintain the set-point temperature.

Raise or lower the agitator at the touch of a button

Audible alarm – can be set to "beep" automatically when alarm temperature point is reached.

FireMixer Models:	S-92 Chief	S-92 Warrior
Natural Gas (NG)	#0310	#0320
Propane Gas (LP)	#0311	#0321
Agitator	Dual counter-rotating agitators - Spring-loaded scrapers - Double U-shaped inner stirrer	Single agitator with spring-loaded scrapers
Heat Adjustment	Manual Valve	
Temperature Adjustment	Programmable Digital Controller	
Heat Type	Cast Iron Convection Gas Burner	
Heat Range	125-150,000 BTU	
Insulation	Ceramic	
Stove Construction	Stainless Steel	
Electrical	208/230 60HZ 3-Phase 15 A, 1 HP Drive Motor	
Brim Full Kettle Capacity	17-30 Gallons (65-114 liters)	
Working Kettle Capacity	13.5 – 24 Gallons (50-91.2 Liters) (80% Brim Full)	
Kettle Sizes	24 in. Diameter x 12.5", 14", 16", or 18 in Deep (60 cm Diameter x 31, 35, 40, or 46 cm Deep)	
Space Requirements	36 x 52 in Footprint (92 x 132cm) 80 in (203cm) Fully Extended Height	
Weight	925 lb (420 kg)	875 lb (400 kg)
Options, Priced separately	Copper or Stainless Kettles, Drip Tray, Cream Can, Nut Stirrer, Breaker Bar, NEMA-4 Washdown, High Torque, limiter option, Teflon scrapers, triple blade inner stirrer.	
Note: Savage Bros. Co. may change specifications. Confirm specifications when ordering.		