



## **NCB612DXT CNC 6-SIDED DRILLING MACHINE**

The NCB612DXT CNC Drilling Centre is a high technology compact machine able to drill holes on 6 sides, groove top and bottom, and route shapes in one process without turning the panel. Continuous working for various batch sizes and patterns to suit complex production.

## DESIGN & CONSTRUCTION

The heavy duty machine body is welded with square tubes and laser-cut steel plates, then processed by an advanced CNC for metal work. This enhances the stability and strength of the body, reducing vibrations in the process.

- Gantry and machine bodies have been designed as one organic structure of high rigidity. Machine net weight up to **3850kg - hefty duty**;
- Frame bodies pass the **heat treatment** and **vibration aging treatment** to guarantee the whole service life without deforming.
- After **sandblasting** and **painting**, the top-grade CNC metal processing machines process the body and components to ensure perfect quality and detail.



## QUALITY CONTROL



Advanced measuring equipment and strict QC system also help to make sure the final machine we offer to our customers are of high quality;

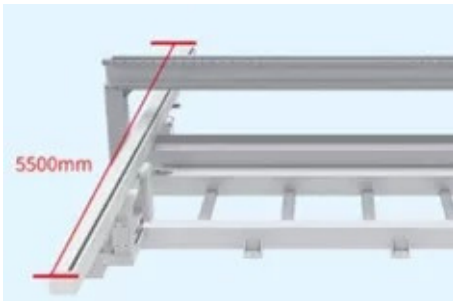
All the machines are delivered with Quality Certificate signed by QC specialist.

## PROFESSIONAL ASSEMBLY LINE

Assembly is a final and important step for ensuring ideal machine performance. Professional assembly lines, from machine bodies to small electrical components, are run by experienced technicians which guarantee machine standardization and performance.



## LONG CLAMP BEAM & FAST CLAMPS



The design of 5.5m longer high-rigidity clamp beam on two sides ensures stable and fast clamp moving with least vibration and reduces the frequency of switching clamp during processing, thus higher efficiency.

The movement of clamps is controlled by servo and along inclined rack&pinion for accuracy in the process; special air jet to remove the dust before clamping the board.



## INFED AIR FLOAT TABLE

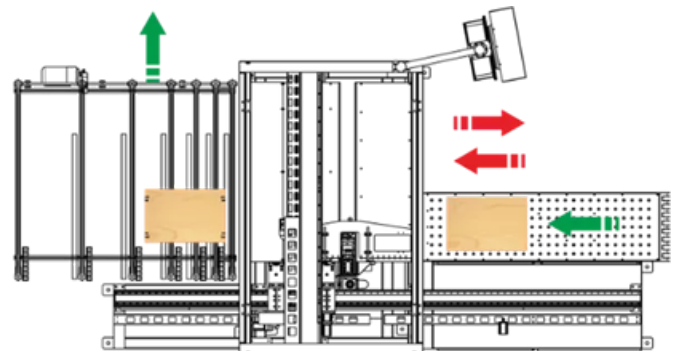


Floating the feed table in front makes boards smoothly move on the table, avoiding scratches on the panel surface. Standard with air blower.

## FEED-OUT

Can choose feed mode feed-in & out in front side or feed-in in front and feed-out in back.

Feed out in back mode with 2 steps smooth out. The hairbrush and conveyor belt can offer very good protection to the surface.



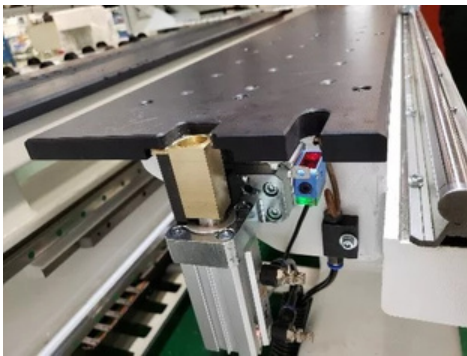
# POSITIONING

## Slide Aligner

Dual clampers cooperate well with auto side alignment to guarantee precision and stability in panel processing.



## Stopper



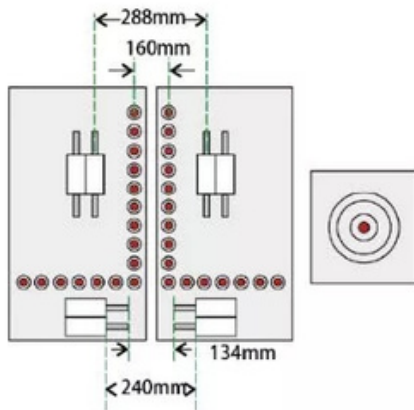
The stop is strong design to offer stable alignment. Besides, the sensor can measure the workpiece X length. The air blow will clean the dust on the sensor.

## Support Plates

Top and bottom drilling blocks and main spindles have support plate to offer the board a support force when the other side is being processed to ensure accuracy in process.



## TOP DRILLING BLOCK



5.5kW ATC main spindle + 2 boring blocks, increasing processing efficiency at least by 30%

Vertical drills: 16\*2

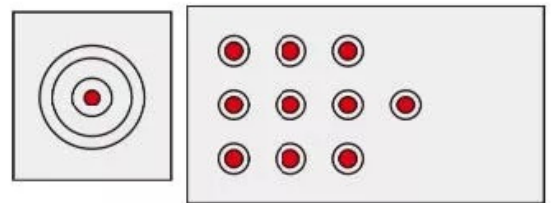
Horizontal drills: 4\*2 in X direction; 2\*2 in Y direction.

Symmetrical drilling simultaneously is 160mm.

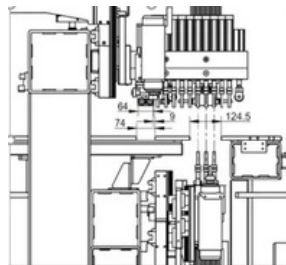
## BOTTOM DRILLING BLOCK

3.5kW world famous main spindle + one boring block.

10 vertical drills



## VERTICAL DRILLS IN COLLINEAR



Collinear vertical drills of top and bottom drilling blocks, faster to drill through holes.



## 4 POSITION TOOL CHANGER

Tool type ER25, main spindle can change tool automatically from 4 slots



## TOOL TOUCH OFF DEVICE



Without need of setting tool tip by manual by using tool setting gauge

## ACCURATE MOVEMENT OF EACH AXIS

### X and Y direction

Transported by high-stiffness rack and pinion, ensures the high precision, stability, smooth running and long service life.



### Z direction

Ball screw rod gives the machine added precision in Z direction.



### Servo motor

➤ The accurate movement of each axis is ensured by the high quality servo motors.

X axis: 0.75kw\*2;

Y axis: 0.85kw\*3;

Z axis: 0.85kw\*3.

➤ Max travelling speed: X/U/Y/Z:135/135/75/30m/min



## DRAG CHAIN



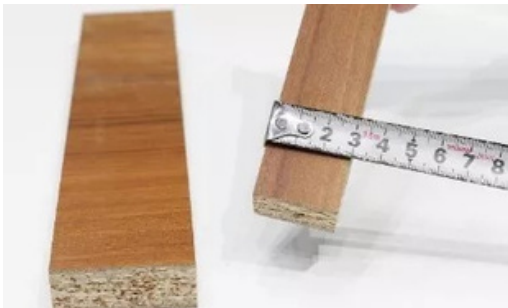
High-quality drag chain used to drag and protect electric wire and air tube during movement of each axis for longer service life.

## HAND WHEEL

Hand wheel makes commissioning more convenient.



## MIN. PROCESSING PART



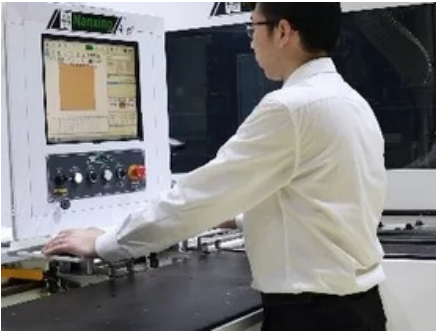
NCB612D drilling block design and software can do drilling for 30×200mm narrow parts.

## BARCODE READER

Read the panel processing information generated by furniture making software, panel processing can be simply performed by scanning the barcode, especially suitable for production line.



## IPC



IPC with Windows operating system.  
17" DELL display.

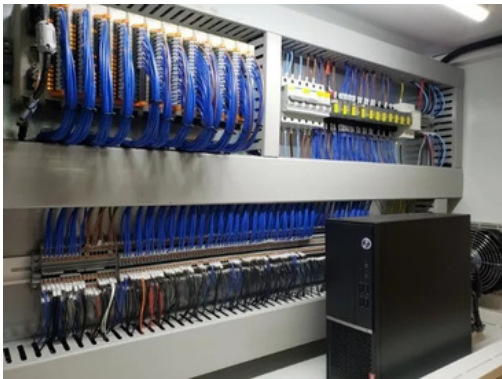
## CONTROL SYSTEM

SYNTEC CNC control system and operation software, reliable and the process efficiency is 20%-25% faster.





# EXCELLENT ELECTRICAL COMPONENTS

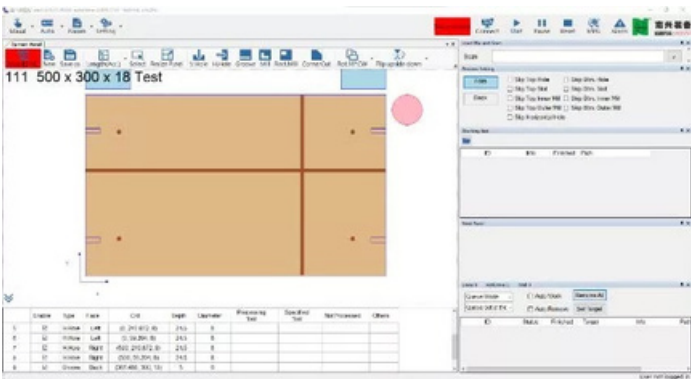


INOVANCE



# MULTI-FUNCTION OPERATION

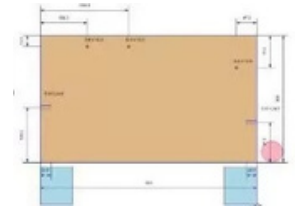
Control interface is modern and friendly



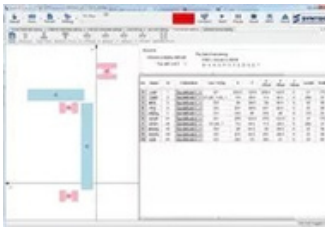
Full function operation mode. Such as:



### Length feature



## Simulation



## Couple processing



## Easy tools setting



## FILE FORMAT SUPPORT



Support various file formats such as  
MPR, DXF, BAN, BPP, PDX; XML; XXL.

## TECHNICAL SPECIFICATIONS

Table size	1350 x 688 mm
Panel length	200-2400 mm
Panel width	30-1200 mm
Panel thickness	8 - 50 mm
Vertical drills	16 x 2
Horizontal drills	X: 4×2    Y: 4×2
Bottom drills	10 ER25 x
Main spindle	2 5.5 kW x 1    3.5 kW x 1 18000RPM
Feeding speed	135/135/75/30 m/min
Transmission mode: X & Y axis	Rack and pinion
Transmission mode: Z axis	Ball screw
Transmission mode: Side alignment	Rack and pinion
Total power	22.5 kW
Weight	3,850 kg
Overall dimensions	5700 x 2990 x 2200