

Oertling

a history of precision weighing

Note: This site uses cookies. By continuing to use the website then you agree to our terms and conditions. Please see our terms and conditions for more information.

[Home](#)

Your Location: Oertling

Menu

[About Us](#)

[Balances](#)

Welcome

OERTLING fine British balances from 1847 to 1996 a brief history

Founder Ludwig Oertling (1818-1893) was a German instrument maker who came to England in 1844 and worked as an instrument maker. In 1847 he set up his own business which at sometime was at 12 Store Street, London. From about 1854 to 1860 he collaborated with George H Makins (assayer to the Bank of England) to produce a "Improved Assay Balance". It was so successful it became the prototype for many generations of Oertling assay balances. From 1861 to 1867 he worked in partnership with Edward Wilds Ladd in London.

The earliest known Oertling balance was manufactured in London in 1847 ;known as the Beale balance ,named after the person who purchased it for three pounds and seventeen shillings. This balance survived until about 1992 when it sadly went missing during the move from St Mary Cray to the Avery site at Smethwick.

After the death of Ludwig Oertling in 1893 his son Henry ran the company until his death in 1921. The company was sold to W & T Avery in 1925 and continued to manufacture at Naylor Road, Peckham in south London. This factory was badly damaged by German bombing during the second world war.

In 1952 the company moved to a purpose built factory at St Mary Cray Orpington, Kent. It kept open a repair centre at 23 Charterhouse Street, London which closed in about 1960. In 1992 the company moved to the Avery site (Soho Foundry) at Smethwick ,Birmingham.

The last Oertling balances were manufactured in 1996 , many are still in use to this day (2012) . Earlier models after being in use for many years have become collectors items and are tribute to the very fine engineering and cabinet making skills of the company.


This web site gives only a very brief history of the company and it's products, I hope at least gives some recognition to it's importance as a British balance manufacturer for almost 150 years.

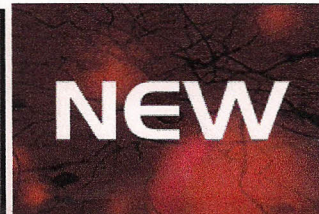
by Tony Morris - June 2012

©2012 European Instruments Ltd.
Website Terms & Privacy Statement

Product in Focus



 sartorius
Cubis :
Weighing Has Evolved





HYDROMETERS
PETROLEOMETERS
SACCHAROMETERS

BALANCES & WEIGHTS

(Assay, Chemical and Bullion)

AUTOMATIC COIN - WEIGHING MACHINES

FOR BANKS AND MINTS.

MADE IN ENGLAND BY

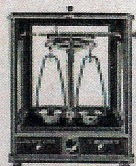
L. OERTLING, LTD.

Turnmill Street,
LONDON, E.C.1.

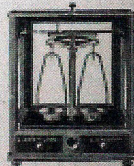
ESTABLISHED 1849.

Telephone :
Clerkenwell 1939.

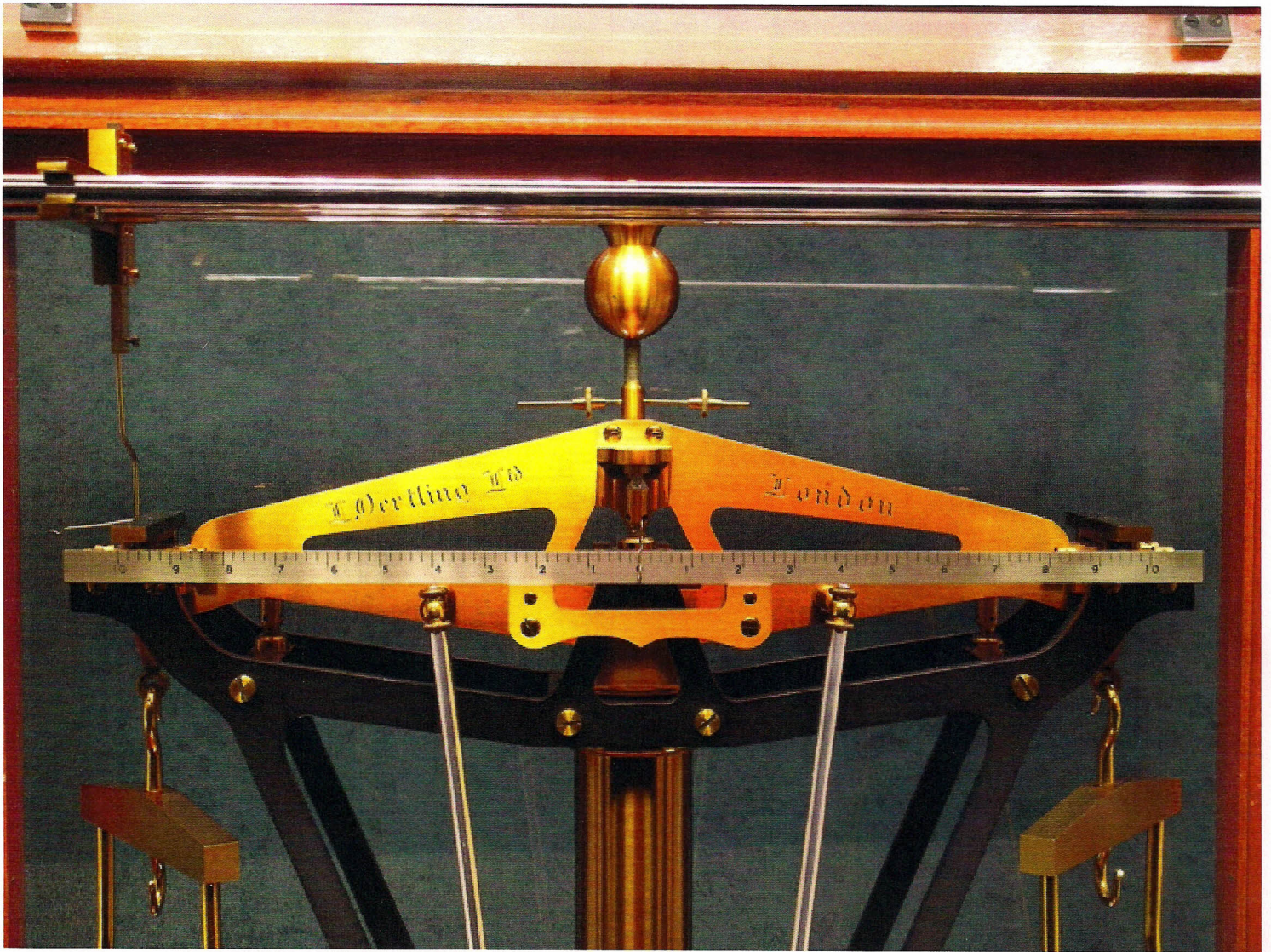
Tel. Address :
"Oertling, London."



STAND No. G. 56.



Codes : A.B.C. 5th Edition.



We recommend a book, "The Assay Balance, Its Evolution & the Histories of the Companies that made them" by John & Geraldine Shannon. according to that reference "Ludwig Oertling was born in Schwerin, a small town 50 miles east of Hamburg, Germany. Not long after his birth, the family moved from this farming region to Berlin. Here the eldest son, Johann August Daniel Oertling (1803-1866), became established as an instrument maker and eventually took in his brother as his apprentice. In his early 20s, Ludwig attended a university in Paris for a brief time before emigrating to London. because the apprenticeship served in Germany, he was able to secure his assistant's position with Makins.

after his association with Makin's, Oertling decided to specialize in the making of balances, and by 1851 was employing five men in his own business. In 10 years the workforce had risen to 12 and the family had moved to new quarters. In the 1860s Oertling formed a partnership with EW Ladd under the name of Ladd and Oertling. by the end of the 1860s the company moved once again to larger quarters.

The Oertling firm added 'Limited' to its name in the early 20th century. After Ludwig's death in 1893, his son Henry ran the company until his death in 1921."

The firm was sold to WT Avery in 1925. A joint Company was formed in 1928 with DeGrave & Oertling at one site (Naylor Rd Peckham). One did sales and one did manufacture but both names were put on the scales. The firms were made dormant in 1962. Then scales were sold under the name of Avery DeGrave. More information may be found here:

http://www.gracesguide.co.uk/wiki/L._Oertling and here:

http://stanton-instruments.co.uk/oe_slide.aspx where you can see an Oertling Model 2SB which appears very similar to your balance.