



Leading through passion.

# Cold Milling Machines

W 100 CF | W 100 CFi | W 120 CF | W 120 CFi | W 130 CF | W 130 CFi



# Highlights in operation

## INTUITIVE LEVELLING

The new LEVEL PRO PLUS levelling system offers simple and intuitive operation, guaranteeing high-quality, highly precise milling results.

## FULLY INTEGRATED LEVELLING SYSTEM

Full integration of the LEVEL PRO PLUS levelling system into the machine management system allows a high degree of automation.



### LEVELLING OPERATION

High-precision displacement sensors installed in the hydraulic cylinders of the side plates measure the milling depth which is then displayed on the high-resolution LEVEL PRO PLUS control screen.

### VIEW TO THE FRONT

The slender design of the machine frame provides a free view towards the front and of the milling edge.

### SCRAPER POSITION

The scraper position is detected by means of a displacement sensor and then displayed on the control screen.

### MULTIFUNCTIONAL ARMREST

The multifunctional, individually adjustable armrest combines innovative design and perfect user-friendliness. Important information is displayed on the colour control screen.

### AUTOMATIC FEATURES

Many new automatic features relieve the operator from a significant part of his workload and increase daily production rates.

### HEIGHT ADJUSTMENT OF MACHINE INCLUDED IN ARMREST

Convenient, hydraulic proportional height adjustment of the machine with milling depth memory feature included in the multifunctional armrest.

### "FAVOURITES" KEYS

Four "Favourites" keys can be programmed with 20 different functions.

### JOB DATA

Pertinent job details are provided automatically to allow the visualization of daily performance rates.

### SIDE-MOVING OPERATOR'S PLATFORM

The operator's platform can be moved outwards by 200 mm hydraulically, thus enabling an optimal view of the area ahead of the milling drum unit and of the right-hand front track unit or wheel.

### CAMERA SYSTEM

The optimized camera system provides the machine operator with a high-resolution image of the milling edge or point of material discharge.

### ERGONOMIC DRIVER'S SEAT

The driver's seat with integrated seat heating can be rotated to the left and right to offer a good view to the side and to the rear.

### "WELCOME" AND "GO HOME" LIGHTS FEATURE

The access ladder and operator's platform are fully illuminated when approaching or walking away from the machine.

### WEATHER PROTECTION

Additional wind and weather protection elements on the operator's platform offer protection from exposure to rain and wind.



LEVEL PRO PLUS levelling system.



View of the area ahead of the milled surface.



# Highlights in performance and productivity

10  
11

## EXHAUST GAS AFTER-TREATMENT FOR W 100 CFi, W 120 CFi, W 130 CFi

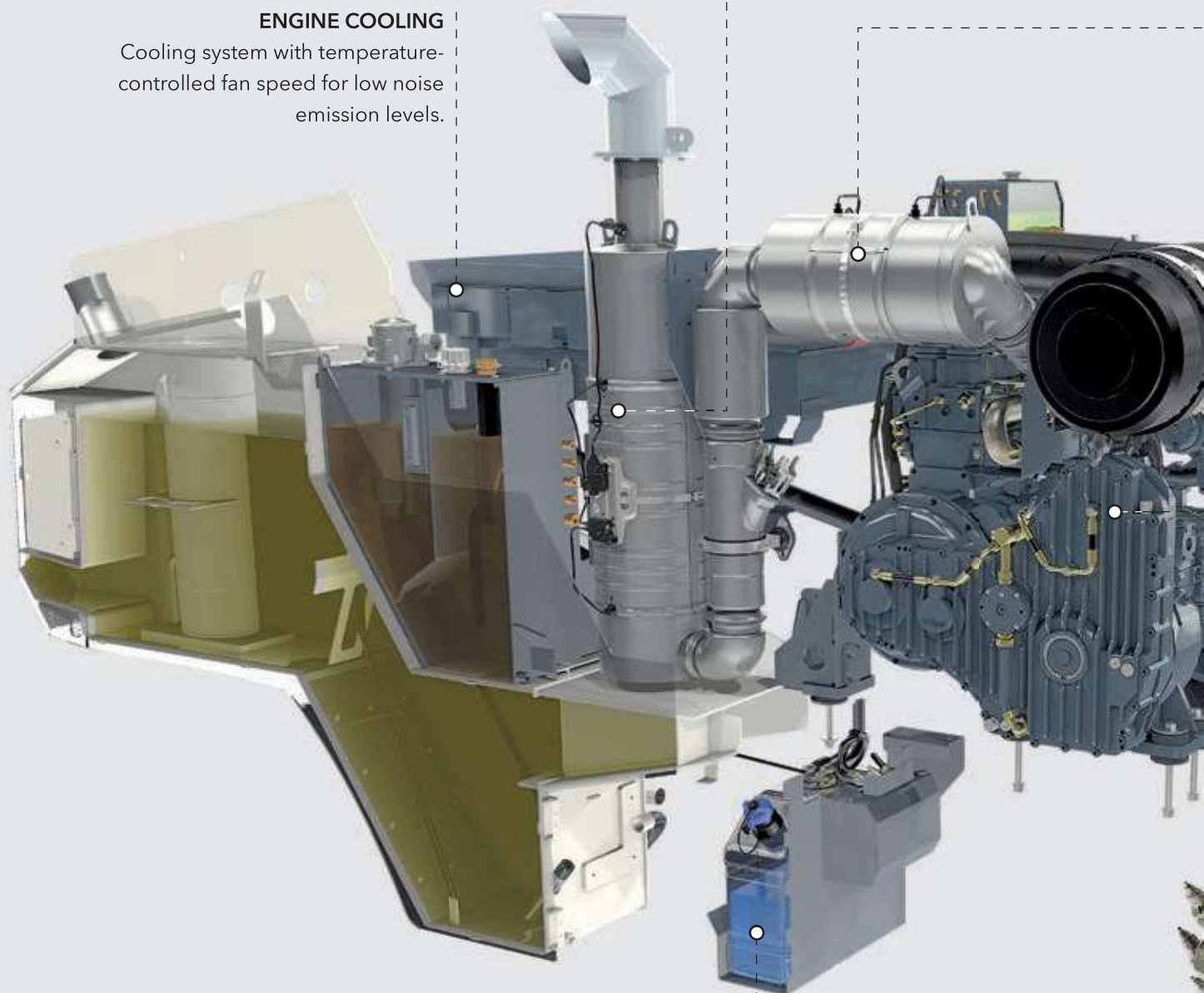
For effective exhaust gas purification, the diesel engine is fitted with both a two-way catalytic converter and SCR catalytic converter, thus complying with the strict requirements of the currently highest emission standards EC Stage 4/US Tier 4f.

## SCR CATALYTIC CONVERTER

The integrated SCR catalytic converter and added, special urea solution reduce nitrogen oxides.

## ENGINE COOLING

Cooling system with temperature-controlled fan speed for low noise emission levels.



## ADBLUE®/DEF TANK FOR W 100 CFi, W 120 CFi, W 130 CFi

Storage container for urea solution with easily accessible filling port.

## MECHANICAL MILLING DRUM DRIVE

Highly efficient belt drive for reduced fuel consumption.

### OPTIONAL DIESEL PARTICULATE FILTER

The diesel particulate filter is optionally available as original equipment, ensuring compliance with even stricter emission requirements.

### DIFFERENT MILLING DRUM SPEEDS

Three different milling drum speeds enable tremendous milling outputs in a wide range of applications.

### BATTERY-OPERATED HYDRAULIC POWER PACK

The extended electro-hydraulic power pack caters to functions such as the milling drum turning device, cutting tool extraction with the engine switched off, or emergency functions, thus increasing the machine's flexibility on site.

### LOAD-CONTROLLED WATER SPRAY SYSTEM

The amount of water injected to cool the cutting tools increases automatically relative to the increase in engine load. Water consumption can also be directly adjusted electrically from the operator's platform.

### FEWER OPERATOR INTERVENTIONS

The WIDRIVE machine management system includes many new automated features relieving the operator from part of his workload.

### AUTOMATED LOWERING OF THE DRUM INTO WORKING POSITION

The automated process of lowering the milling drum into working position uses relief sensors to prevent inadvertent lifting of the rear wheels or track units.

### COMPACT DIMENSIONS

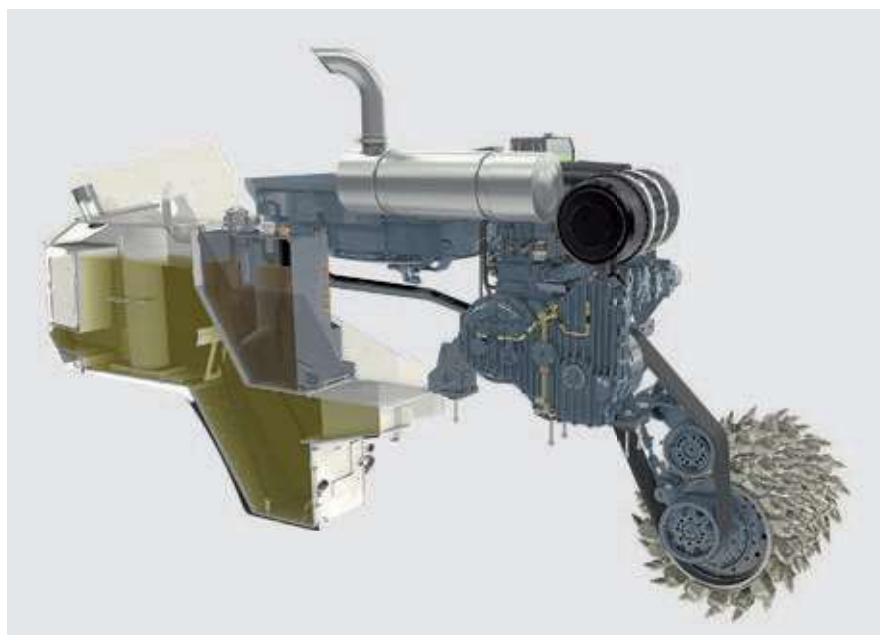
Optimized machine weight and compact dimensions ensure easy transport.

### TWO-WAY CATALYTIC CONVERTER

Catalytic converter oxidizing hydrocarbons and carbon monoxides.

### HIGH ENGINE POWER

Significantly higher engine power and increased maximum torque guarantee fast, productive operation even at the maximum milling depth.



W 100 CF, W 120 CF, W 130 CF for EC Stage 3a/US Tier 3:  
high-performance, fuel-efficient engine technology.

# Technical specification

12  
13

	W 100 CF	W 120 CF	W 130 CF
Milling drum			
Milling width	1,000 mm	1,200 mm	1,300 mm
Milling depth*	0–330 mm		
Drum diameter with tools	980 mm		
Engine			
Engine manufacturer	CUMMINS		
Type	QSL 9		
Cooling	water		
Number of cylinders	6		
Rated power at 2,100 min <sup>-1</sup>	246 kW/330 HP/334 PS		
Maximum power at 1,900 min <sup>-1</sup>	261 kW/350 HP/355 PS		
Displacement	8.9 l		
Fuel consumption at rated power	69 l/h		
Fuel consumption in field mix	28 l/h		
Emission standards	EC Stage 3a/US Tier 3		
Electrical system			
Electrical power supply	24 V		
Tank capacities			
Fuel tank	610 l		
Hydraulic oil tank	130 l		
Water tank	1,400 l	1,600 l	1,600 l
Driving properties			
Max. milling speed	0–85 m/min (5 km/h)		
Max. travel speed in wheeled design	0–125 m/min (7.5 km/h)		
Max. travel speed in tracked design	0–125 m/min (7.5 km/h)		
Crawler units			
Wheel size, front and rear (Ø x W)	660 x 280 mm		
Crawler units, front and rear (L x W x H)	1,330 x 260 x 550 mm		
Loading of the milled material			
Belt width of primary conveyor	650 mm		
Belt width of discharge conveyor	600 mm		
Theoretical capacity of discharge conveyor	176 m³/h		

\* = The maximum milling depth may deviate from the value indicated due to tolerances and wear.

	W 100 CFi	W 120 CFi	W 130 CFi
Milling drum			
Milling width	1,000 mm	1,200 mm	1,300 mm
Milling depth*	0–330 mm		
Drum diameter with tools	980 mm		
Engine			
Engine manufacturer	CUMMINS		
Type	QSL 9		
Cooling	water		
Number of cylinders	6		
Rated power at 2,100 min <sup>-1</sup>	248 kW/333 HP/337 PS		
Maximum power at 1,900 min <sup>-1</sup>	257 kW/345 HP/350 PS		
Displacement	8,9 l		
Fuel consumption at rated power	67 l/h		
Fuel consumption in field mix	27 l/h		
Emission standards	EC Stage 4/US Tier 4f		
Electrical system			
Electrical power supply	24 V		
Tank capacities			
Fuel tank	610 l		
AdBlue®/DEF tank	35 l		
Hydraulic oil tank	130 l		
Water tank	1,400 l	1,600 l	1,600 l
Driving properties			
Max. milling speed	0–85 m/min (5 km/h)		
Max. travel speed in wheeled design	0–125 m/min (7.5 km/h)		
Max. travel speed in tracked design	0–125 m/min (7.5 km/h)		
Crawler units			
Wheel size, front and rear (Ø x W)	660 x 280 mm		
Crawler units, front and rear (L x W x H)	1,330 x 260 x 550 mm		
Loading of the milled material			
Belt width of primary conveyor	650 mm		
Belt width of discharge conveyor	600 mm		
Theoretical capacity of discharge conveyor	176 m³/h		

\* = The maximum milling depth may deviate from the value indicated due to tolerances and wear.

# Technical specification

14  
15

	W 100 CF	W 120 CF	W 130 CF
Weight of base machine			
Empty weight of machine without tank contents	17,700 kg	18,600 kg	19,000 kg
Operating weight, CE*	18,800 kg	19,800 kg	20,200 kg
Maximum operating weight (full tanks, full range of equipment)	22,800 kg	24,100 kg	24,500 kg
Weights of tank contents			
Water tank filling	1,400 kg	1,600 kg	1,600 kg
Diesel tank filling (0.83 kg / l)	506 kg		
Additional add-on weights			
Driver and tools			
Driver	75 kg		
Weight of 5 cutting tool containers	125 kg		
On-board tools	30 kg		
Optional milling drum assemblies in lieu of standard			
Milling drum housing, FB1000 mm, FCS-L	280 kg		
Milling drum housing, FB1200 mm, FCS-L	330 kg		
Milling drum housing, FB1300 mm, FCS-L	370 kg		
Tandem scraper	180 kg		
Optional milling drums in lieu of standard			
Milling drum, FB1000 mm, LA 15, HT11, FCS-L	60 kg		
Milling drum, FB1200 mm, LA 15, HT11, FCS-L	60 kg		
Milling drum, FB1300 mm, LA 15, HT11, FCS-L	60 kg		
Milling drum, FB1000 mm, LA 8, HT11, FCS-L	400 kg		
Milling drum, FB1200 mm, LA 8, HT11, FCS-L	440 kg		
Milling drum, FB1300 mm, LA 8, HT11, FCS-L	460 kg		
Milling drum, FB1000 mm, LA 6x2, FCS-L	320 kg		
Milling drum, FB1200 mm, LA 6x2, FCS-L	350 kg		
Milling drum, FB1300 mm, LA 6x2, FCS-L	360 kg		
Optional additional equipment			
Crawler units in lieu of wheels	1,400 kg		
Canopy in lieu of standard	200 kg		
Short folding conveyor in lieu of standard	40 kg		
Long folding conveyor in lieu of standard	90 kg		
VCS – vacuum cutting system	150 kg		
Supplementary weight for flexible use	430 kg	540 kg	540 kg

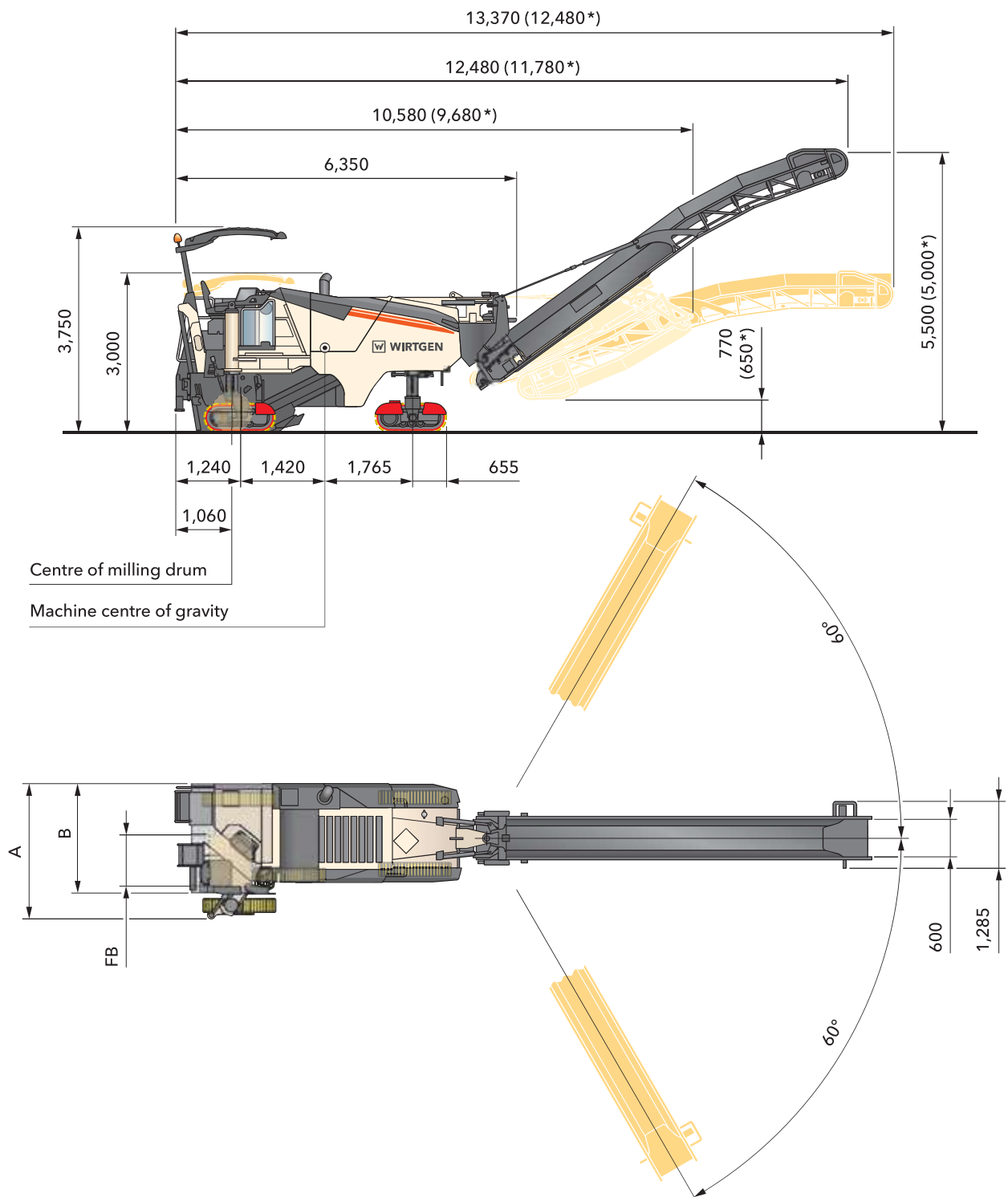
\* = Weight of machine with half-full water tank, half-full fuel tank, driver (75 kg) and on-board tools, excluding optional equipment



	W 100 CFi	W 120 CFi	W 130 CFi
Weight of base machine			
Empty weight of machine without tank contents	17,800 kg	18,700 kg	19,100 kg
Operating weight, CE *	18,900 kg	19,900 kg	20,300 kg
Maximum operating weight (full tanks, full range of equipment)	22,900 kg	24,200 kg	24,600 kg
Weights of tank contents			
Water tank filling	1,400 kg	1,600 kg	1,600 kg
Diesel tank filling (0.83 kg/l)	506 kg		
AdBlue® / DEF tank filling (1.1 kg/l)	38.5 kg		
Additional add-on weights			
Driver and tools			
Driver	75 kg		
Weight of 5 cutting tool containers	125 kg		
On-board tools	30 kg		
Optional milling drum assemblies in lieu of standard			
Milling drum housing, FB1000 mm, FCS-L	280 kg		
Milling drum housing, FB1200 mm, FCS-L	330 kg		
Milling drum housing, FB1300 mm, FCS-L	370 kg		
Tandem scraper	180 kg		
Optional milling drums in lieu of standard			
Milling drum, FB1000 mm, LA 15, HT11, FCS-L	60 kg		
Milling drum, FB1200 mm, LA 15, HT11, FCS-L	60 kg		
Milling drum, FB1300 mm, LA 15, HT11, FCS-L	60 kg		
Milling drum, FB1000 mm, LA 8, HT11, FCS-L	400 kg		
Milling drum, FB1200 mm, LA 8, HT11, FCS-L	440 kg		
Milling drum, FB1300 mm, LA 8, HT11, FCS-L	460 kg		
Milling drum, FB1000 mm, LA 6x2, FCS-L	320 kg		
Milling drum, FB1200 mm, LA 6x2, FCS-L	350 kg		
Milling drum, FB1300 mm, LA 6x2, FCS-L	360 kg		
Optional additional equipment			
Crawler units in lieu of wheels	1,400 kg		
Canopy in lieu of standard	200 kg		
Short folding conveyor in lieu of standard	40 kg		
Long folding conveyor in lieu of standard	90 kg		
VCS – vacuum cutting system	150 kg		
Supplementary weight for flexible use	430 kg	540 kg	540 kg

\* = Weight of machine with half-full water tank, half-full fuel tank, driver (75 kg) and on-board tools, excluding optional equipment

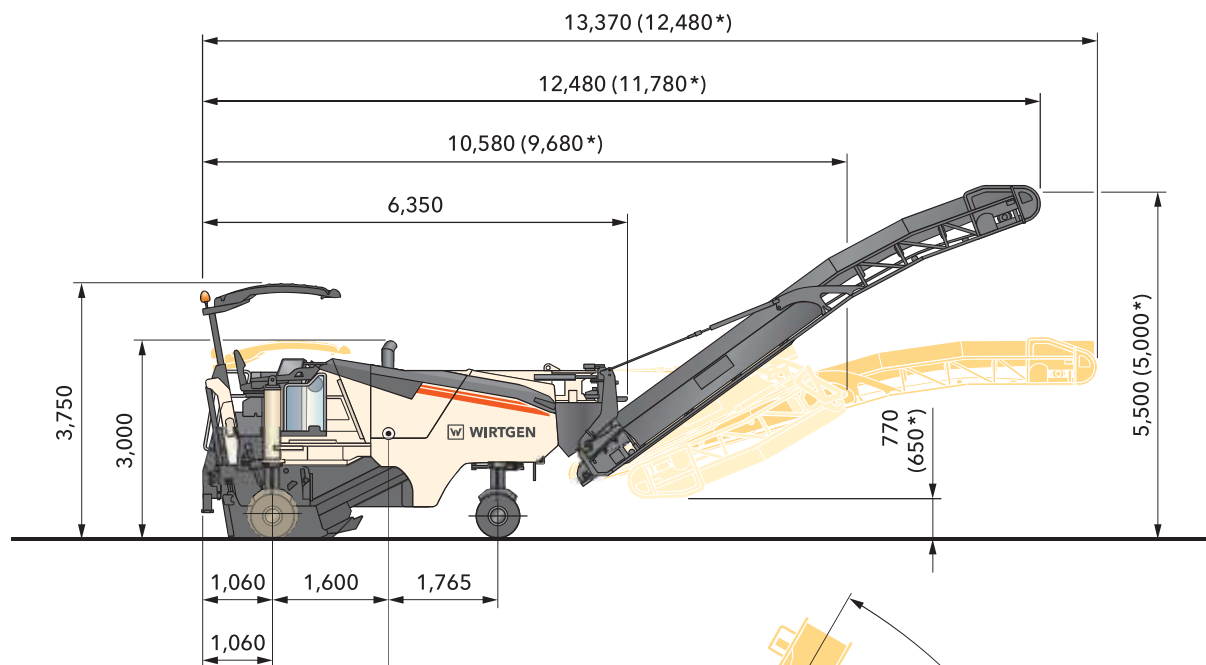
# Dimensions



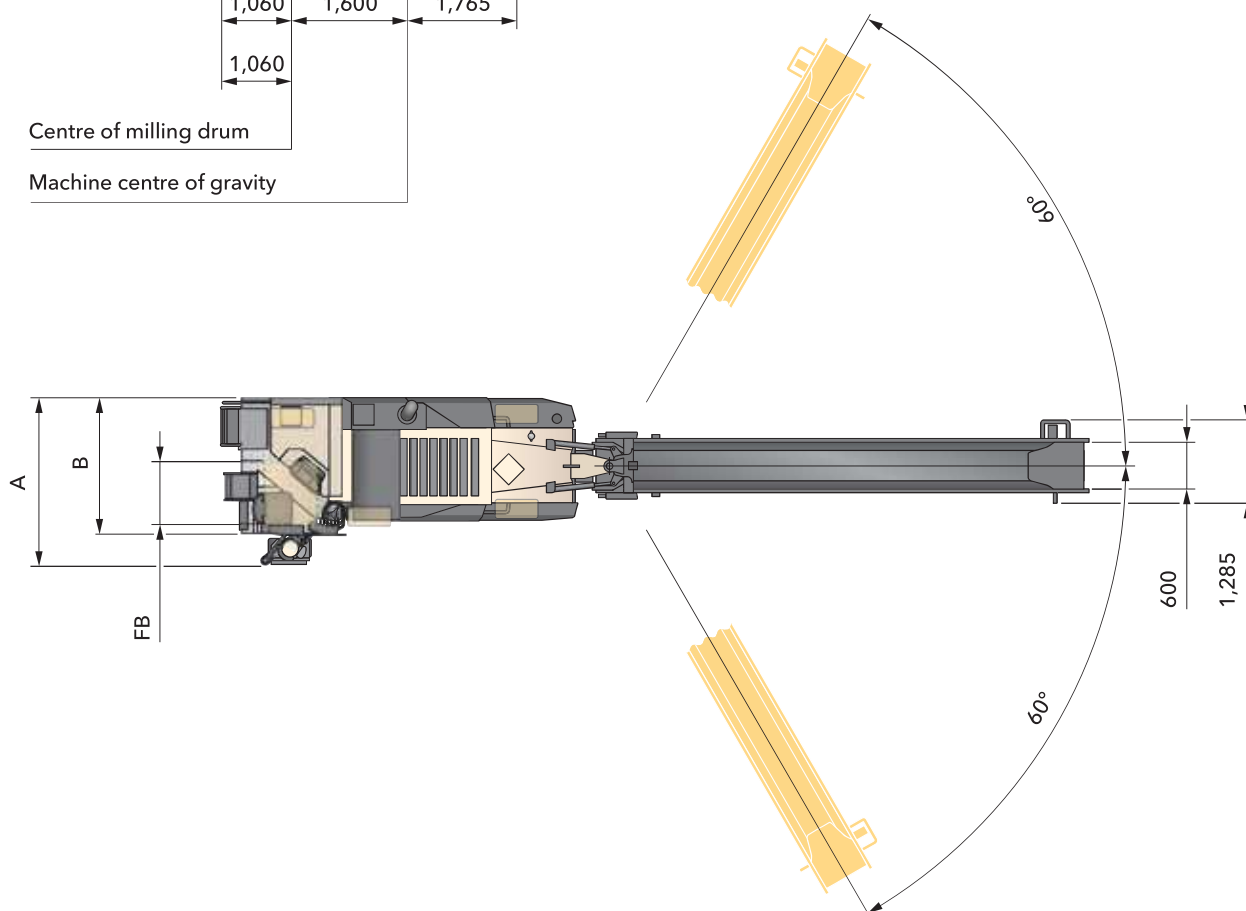
	FB	A	B
W 100 CF/W 100 CFi	1,000	2,540	2,130
W 120 CF/W 120 CFi	1,200	2,660	2,230
W 130 CF/W 130 CFi	1,300	2,760	2,330

Cold milling machine in tracked design, dimensions in mm

\*Short conveyor in folding design



Centre of milling drum  
Machine centre of gravity



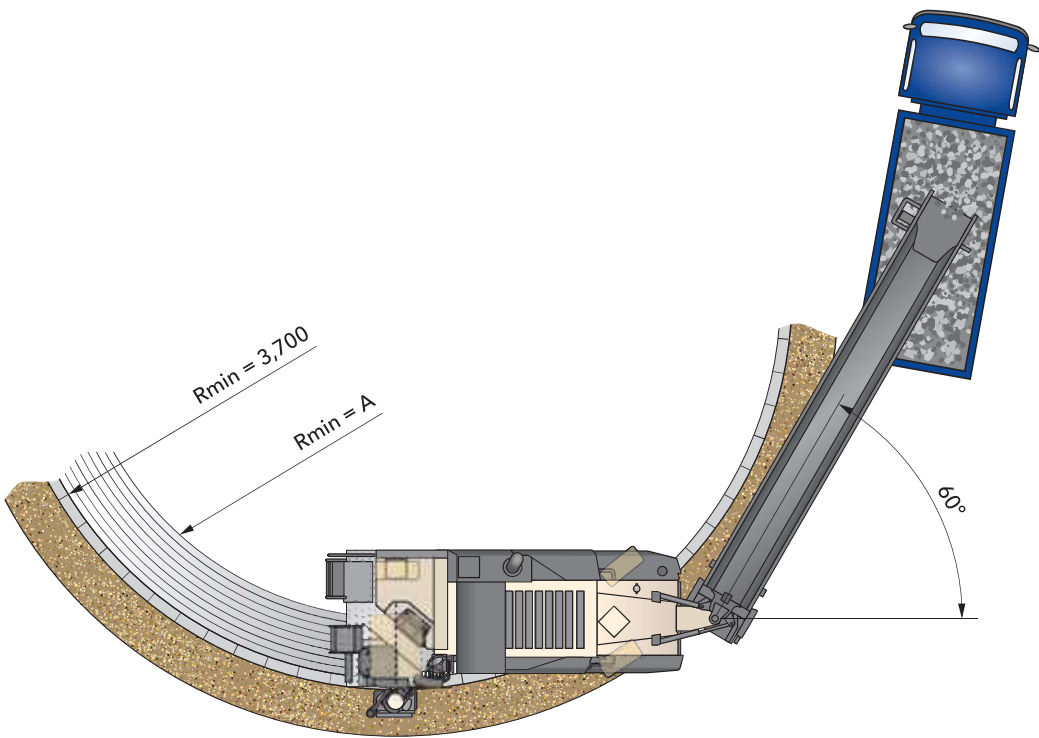
	FB	A	B
W 100 CF/W 100 CFi	1,000	2,540	2,130
W 120 CF/W 120 CFi	1,200	2,660	2,230
W 130 CF/W 130 CFi	1,300	2,760	2,330

Cold milling machine in wheeled design, dimensions in mm

\* Short conveyor in folding design

# Dimensions

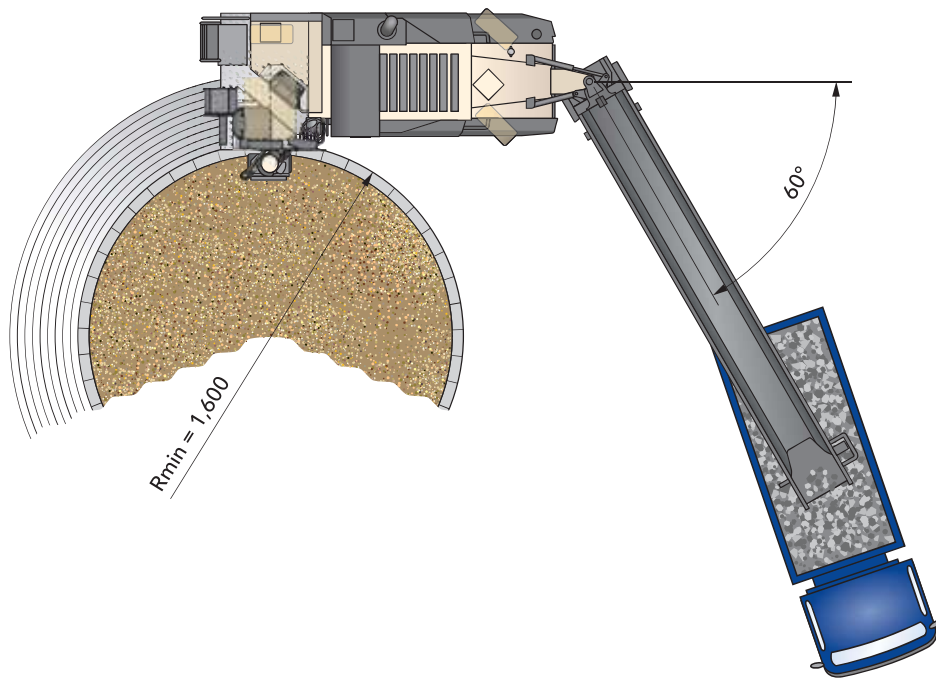
18  
19



	FB	A
W 100 CF/W 100 CFi	1,000	2,700
W 120 CF/W 120 CFi	1,200	2,500
W 130 CF/W 130 CFi	1,300	2,500

Milling radius, 150 mm milling depth, dimensions in mm





Milling radius, 150 mm milling depth, dimensions in mm