

D	1			3	4	5	6	7	8	9	10	11	12	13					
	2																		
N	DIMENSIONS			EMPTY WEIGHT (W/O CLEANERS) (W/CLEANERS) LBS (KG)	BANK SIZE	CHECK ONE	ANCHOR SLEEVE	GROUT	3/4 ANCHOR BOLTS	FRAME MTG. PADS	MIN. ANCHOR PROJECTION	1" NPT VENT	1" NPT DRAIN	LIFTING LUG	ACCEPTS CONNECTION	FEED CONNECTION	(2) REJECT CONNECTIONS	REJECT CONNECTIONS	
	"A"	"B"	"C"																"D"
	41.5 (1054)	31.31 (795)	47.12 (1197)	2285 (1039)	12														
				2532 (1151)	16														
	79.5 (2019)			3940 (1791)	20														
				4211 (1914)	24														
	117.5 (2984)			5073 (2306)	28														
				5389 (2450)	32														
	159.0 (4039)			6823 (3101)	36	✓													
				7105 (3230)	40														
				8089 (3677)	44														
	197.0 (5004)			8370 (3804)	48														

WEIGHT OF INDIVIDUAL CLEANER	
CONE MATERIAL	LBS (KG)
NYLON	12 (5.4)
NYLON	33 (14.9)
CERAMIC	20 (9)
CERAMIC	41 (18.5)

**NOTICE**  
SULZER PAPERTEC ASSUMES NO RESPONSIBILITY FOR DESIGN OF SUPPORTS, FOUNDATIONS, STRUCTURAL AND CONCRETE WORK OR ANY OTHER MATERIAL OR EQUIPMENT NOT SUPPLIED BY IT.

**NOTES:**

- REFER TO INSTRUCTION MANUAL FOR INSTRUCTIONS ON INSTALLING, OPERATING, AND MAINTAINING CLEANER SYSTEM.
- SULZER PAPERTEC ASSUMES NO RESPONSIBILITY FOR THE DESIGN OF SUPPORTS, FOUNDATION, STRUCTURAL AND CONCRETE WORK, OR ANY OTHER EQUIPMENT NOT SUPPLIED BY IT.
- CLEANERS TO BE INSTALLED AFTER UNIT HAS BEEN GROUTED IN PLACE.
- ANCHOR BOLTS, NUTS, AND WASHERS ARE TO BE SUPPLIED BY CUSTOMER.
- FOUNDATION DESIGN TO INCLUDE 25% DYNAMIC LOAD ABOVE OPERATING WEIGHT.
- FEED, ACCEPT, AND REJECT PRESSURE GAUGES AND TRANSMITTERS SHOULD BE LOCATED AT THE SAME ELEVATION AS THE RESPECTIVE HEADERS ON THE CLEANER BANK. THIS PREVENTS MEASUREMENT INACCURACIES DUE TO ELEVATION DIFFERENCES. THE PRESSURE GAUGE/TRANSMITTER SHOULD BE WITHIN APPROXIMATELY 8 INCHES OF THE CLEANER BANK, AS FAR FROM DISCONTINUITIES AS POSSIBLE, AND ON THE SIDES OF HORIZONTAL PIPE RUNS, WHERE POSSIBLE.
- MAXIMUM OPERATING PRESSURE - 60 P.S.I. (4.1 BAR) MILL MUST PROVIDE SOME TYPE OF PRESSURE RELIEF SYSTEM TO PREVENT UNIT FROM BEING OVER PRESSURIZED.
- REFER TO INSTRUCTION MANUAL BEFORE LIFTING.
- WARNING:** NEVER TIGHTEN FOUNDATION NUTS IN SUCH A WAY AS TO CAUSE STRESSES ON THE HEADER ASSEMBLY WHICH WILL CAUSE MIS-ALIGNMENT OF THE CLEANERS.
- ALL FLANGE CONNECTIONS ARE 150# ANSI 16.5 DRILLED VAN STONE TYPE.

This Drawing is the Property of Sulzer Papertec Machine Co. and is not to be reproduced or used in any way without the written permission of Sulzer Papertec Machine Co. MAY 12 1994

FOR APPROVAL:  APPROVED FOR FABRICATION  
ADDRESS:  APPROVED FOR FABRICATION  
S.O. NUMBER:  APPROVED FOR FABRICATION

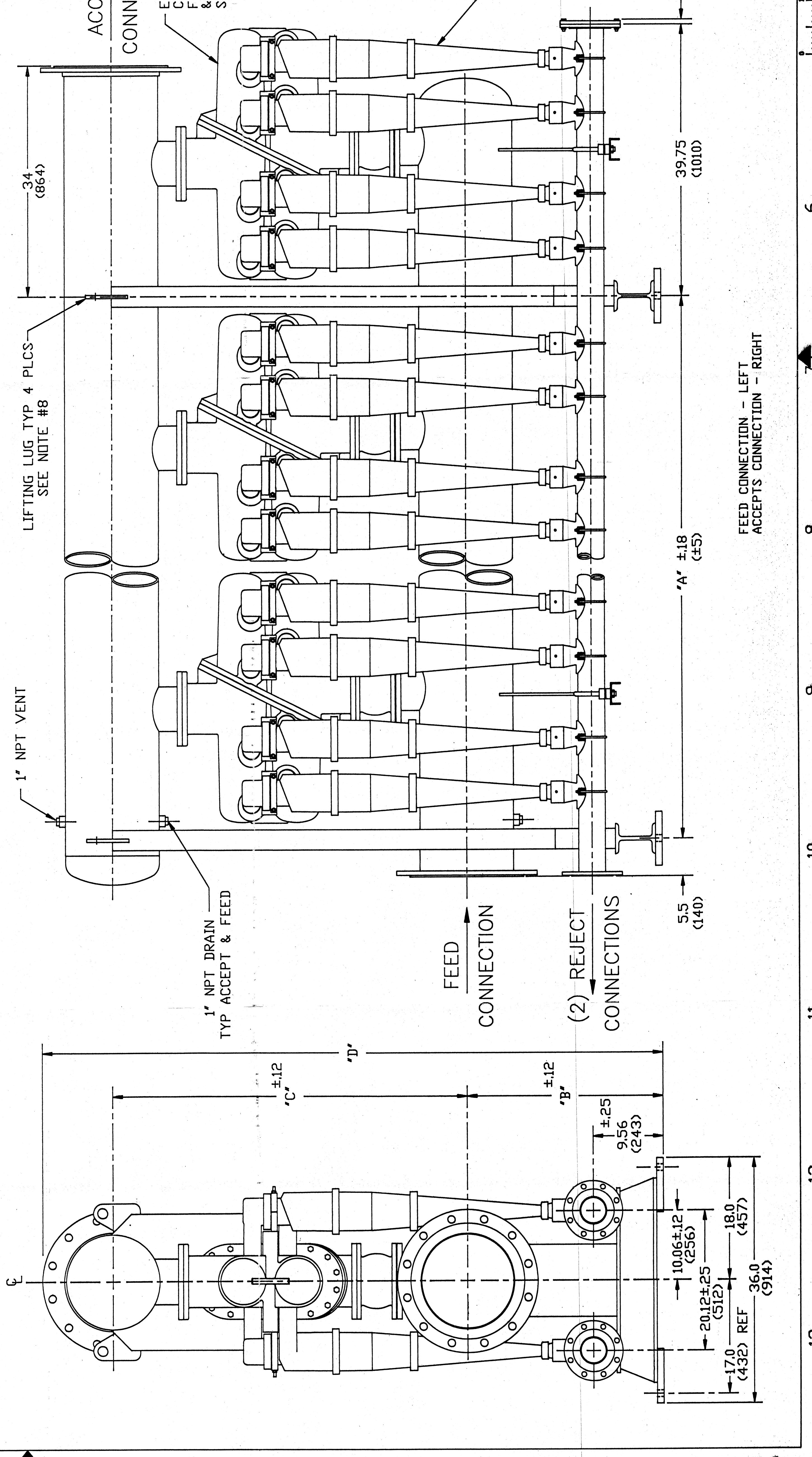
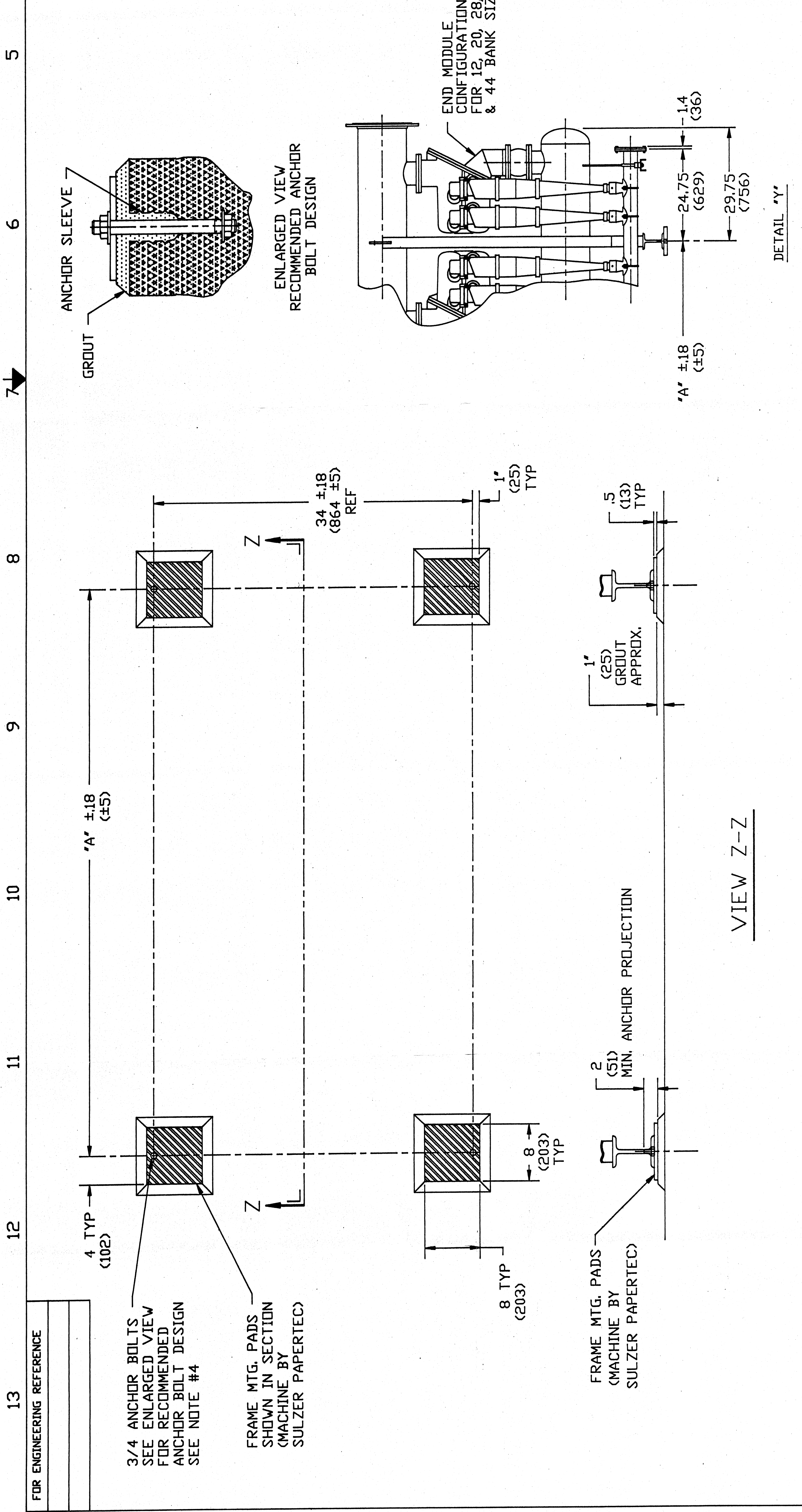
FOR APPROVAL: DRAWING APPROVED AS SENT AND FABRICATION WILL PROCEED AS SHOWN IF PRINTS ARE NOT RETURNED WITHIN 30 DAYS OF RECEIPT. DESTROY ALL PREVIOUSLY REVISIONED PRINTS. SIGNED:  DATE:

**TAGGING:**  
Primary Forward Cleaners  
Equip. Nos. 3020-61037, 3020-61137

DIMENSIONS (INCH)

DRWN	D/JG	ASSY INSTALLATION	(12-48 BANK)
DATE	5/5/94	MACHINE	LS CLEANER
CHKD	G/E/N		
DATE	5/6/94		
SCALE	NONE		
EQUIP. NO.			
DATE			
REVISED			
DATE			
DATE			

1 - CAD DWG



1 - CAD DWG

**SULZER Papertec**  
MANSFIELD, MA  
U.S.A.

ZHC5-904-00040