

BULLETIN CP900

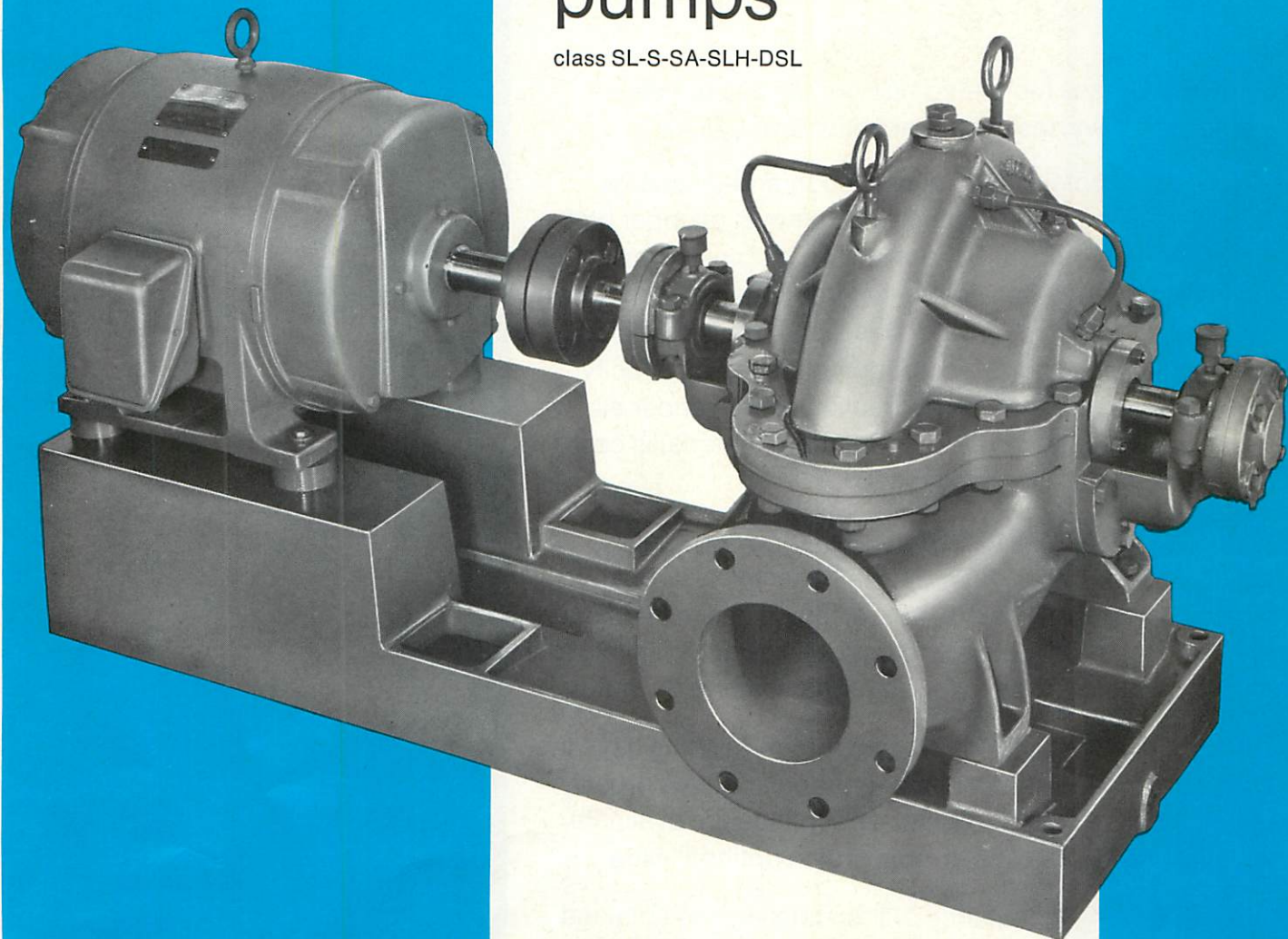


Canada Pumps

# DOUBLE SUCTION

single stage  
pumps

class SL-S-SA-SLH-DSL



engineered for  
high efficiency  
long life



# construction details



## Canada Pumps double suction single stage pumps

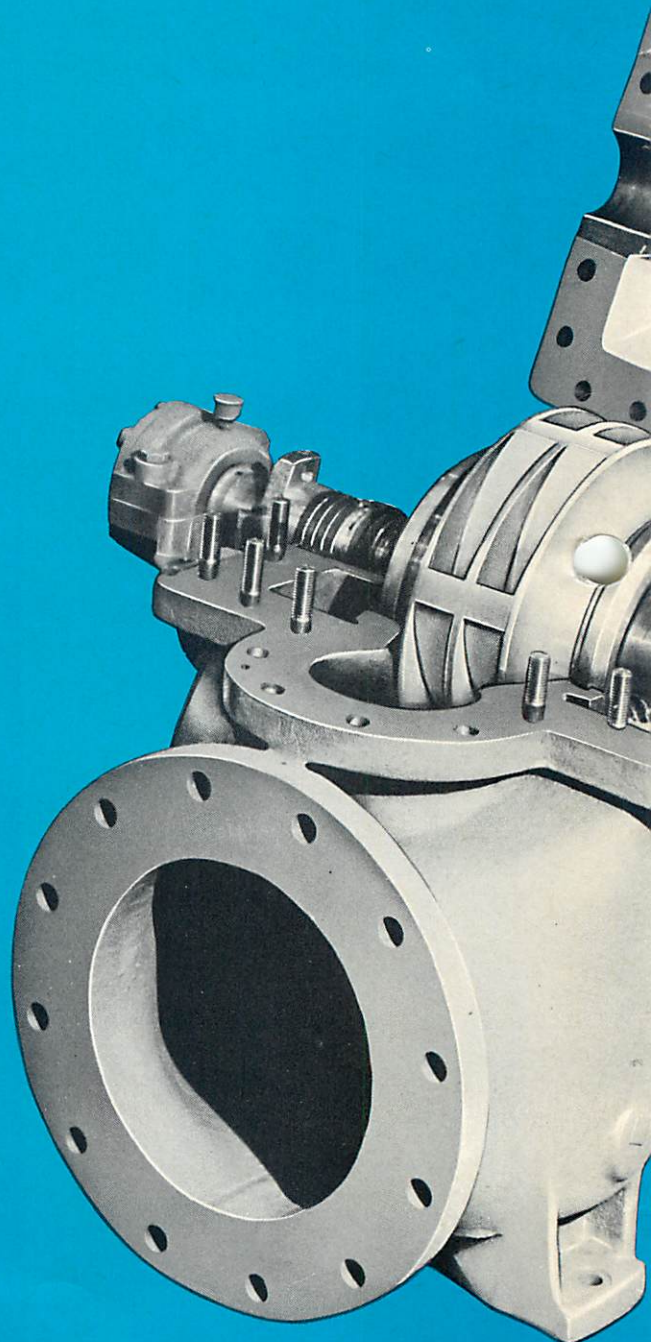
**BEARINGS** Grease lubricated heavy-duty ball bearings contained in heavy cast-iron brackets are standard

**CASING\*** Horizontally split, with suction and discharge nozzles cast in the lower half permits removal of upper half for inspection or removal without disturbing pipe connections. Flanges of machined casing are secured together with heavy bolts. Simple formation of water passages has ample area to limit friction losses and avoid sudden changes of velocity. The pump remains in perfect hydraulic balance under all conditions of head and pressure. Standard material is cast iron. Other materials are available

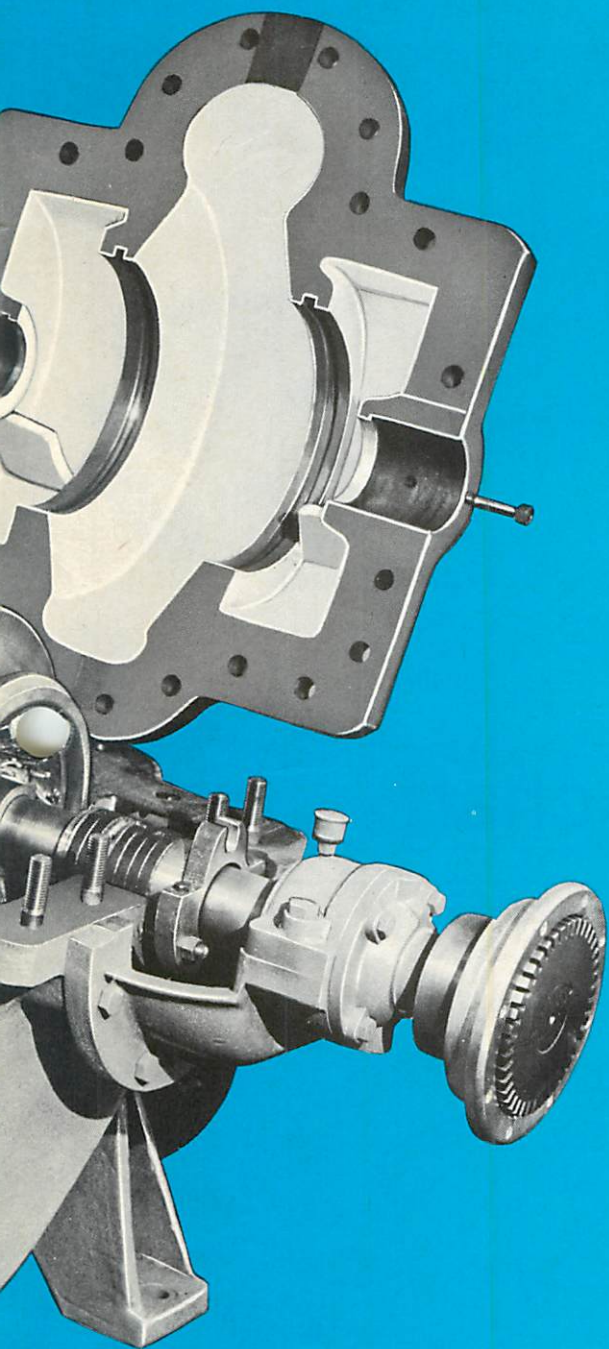
**CASING WEARING RINGS** Bronze wearing rings are supplied in the casing surrounding impeller inlets. L-shaped clearance rings are standard. Where fibrous or similar material is present in the water, lateral clearance rings are available to prevent mechanical binding or abnormal loading on motor

**COUPLING** Flexible Buffalo pin and rubber bushing have the strength to carry maximum loads required and are carefully machined and balanced. All-metal couplings are available on special order. Coupling guards are an optional extra

**IMPELLER** Hydraulic balance of the impeller is maintained by entrance of water in equal volume and pressure from opposite sides. Before shipment, each impeller is accurately tested to see that it is in perfect balance. These impellers are available in bronze, cast-iron, stainless steel or alloys. Impellers are designed for future installation of impeller wearing rings or can be provided initially on special order







\*horizontally split casing provides easier access

**SEAL CAGES** Bronze cage rings, with suitable circulating holes, are provided when required or specified. Also available in split type and/or special materials

**SHAFT** Standard is machined high grade carbon steel; while special metals are available when required. All rotating elements are assembled on shaft and checked for perfect balance before being placed in the pump

**STUFFING BOXES** Cast in each end of the pump casing, they are of especially deep construction to provide for ample packing. Mechanical seals are optional extra

**SUBBASE** Construction is exceptionally substantial, suitably ribbed and provided with heavy lugs for foundation bolts. Ample grout holes are provided. Drip lip can be furnished when required. Ample machine-finished pads are provided for mounting and bolting the pump and driver

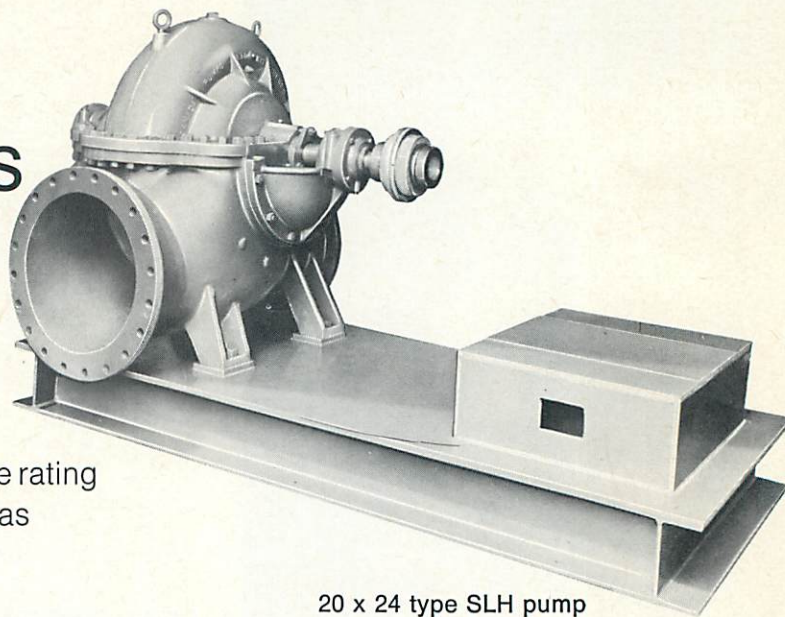
**SPECIAL** Custom designs and construction can be supplied for unusual applications: pressure, high temperature, corrosive or abrasive conditions. They are available in any material that is castable, machineable and commercially available. Get in touch with the Canada Pumps sales engineer in your area for solution to your particular problem



# composite rating charts



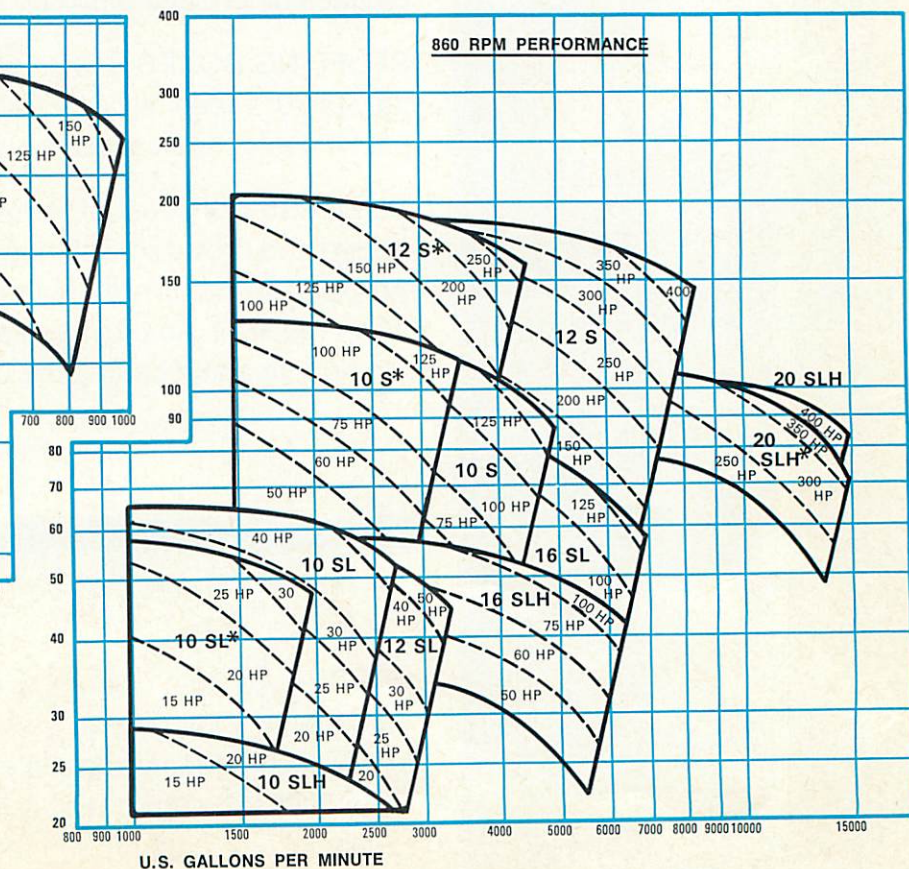
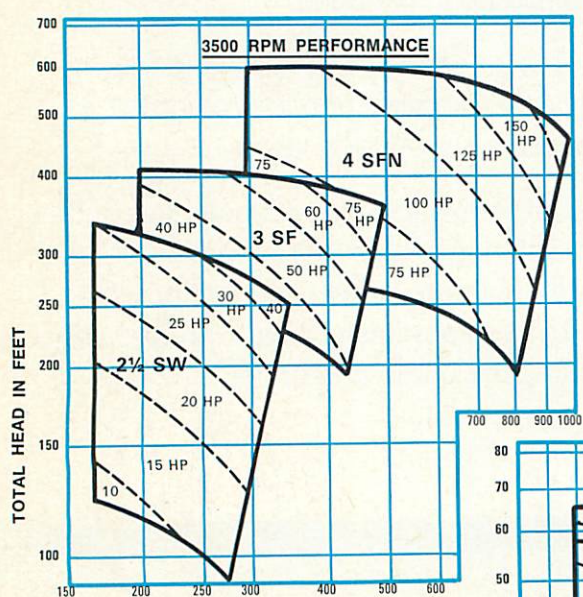
## Canada Pumps double suction single stage pumps



QUICK AND EASY answers from these composite rating charts provide best pump selection for efficiency as related to initial cost

20 x 24 type SLH pump

## 3500 rpm and 860 rpm composite rating chart

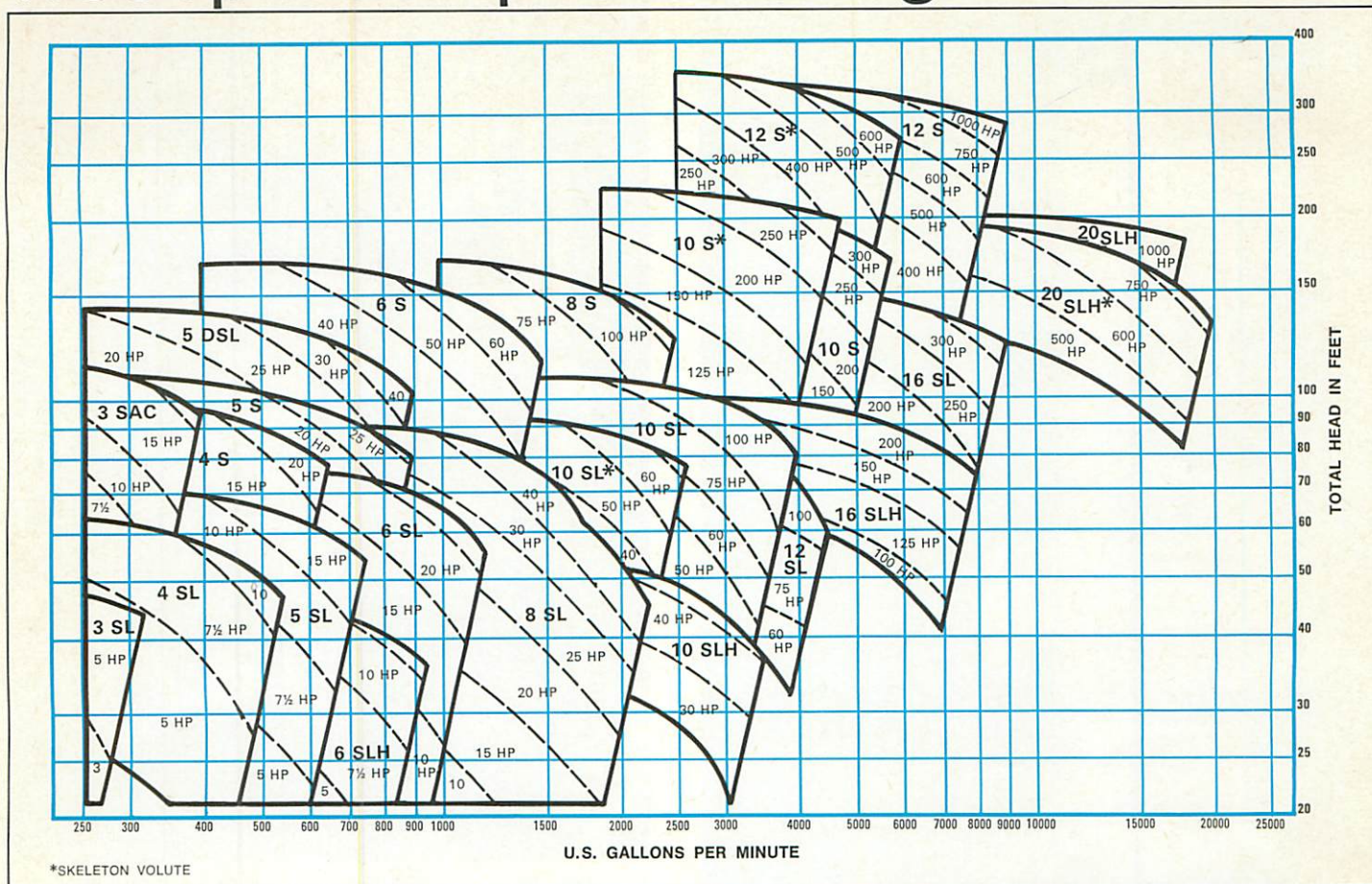


SELECTIONS BASED ON 1.0 SP. GR.  
AND 31.5 SSU VISCOSITY

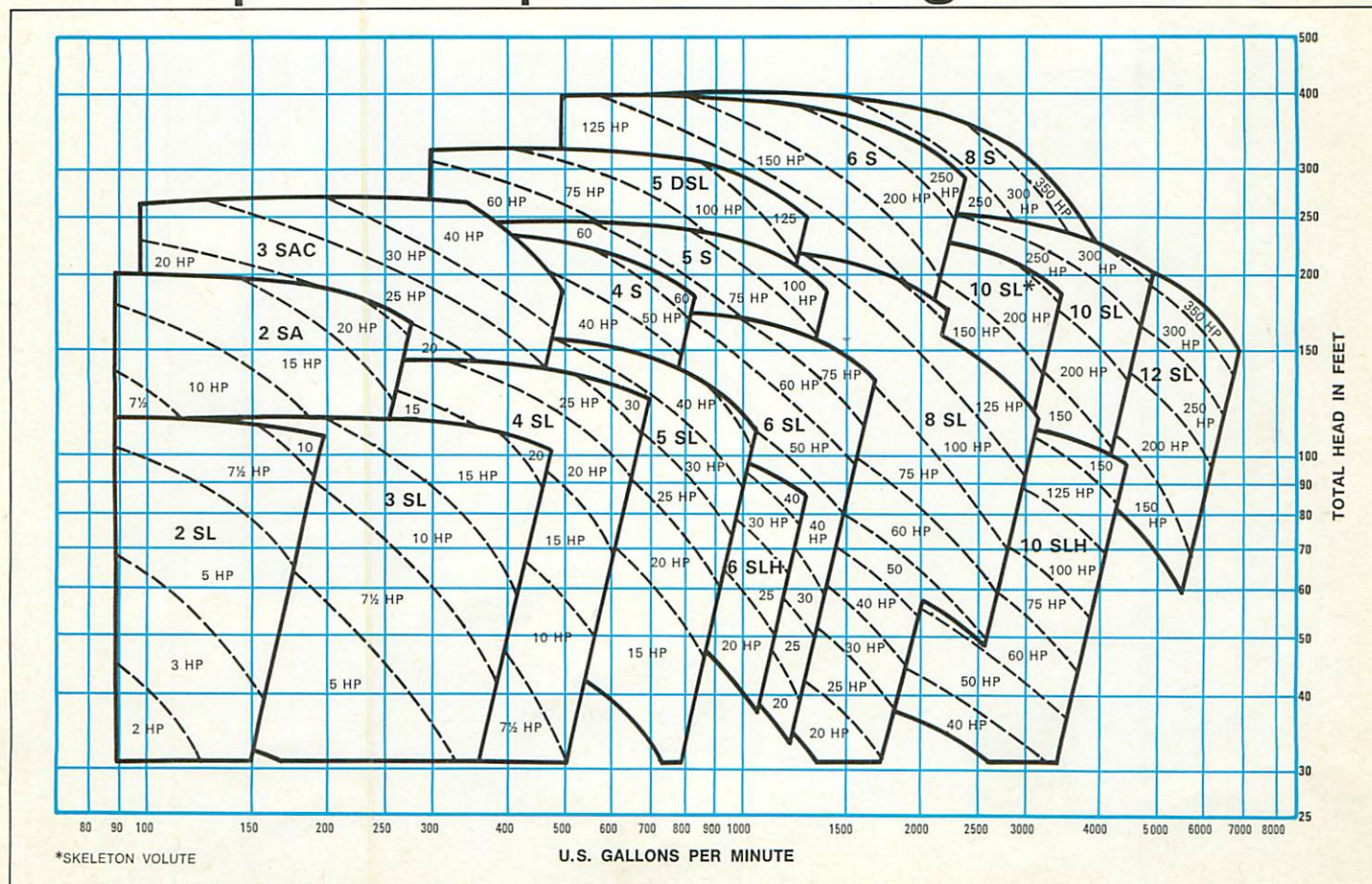
\*SKELETON VOLUME



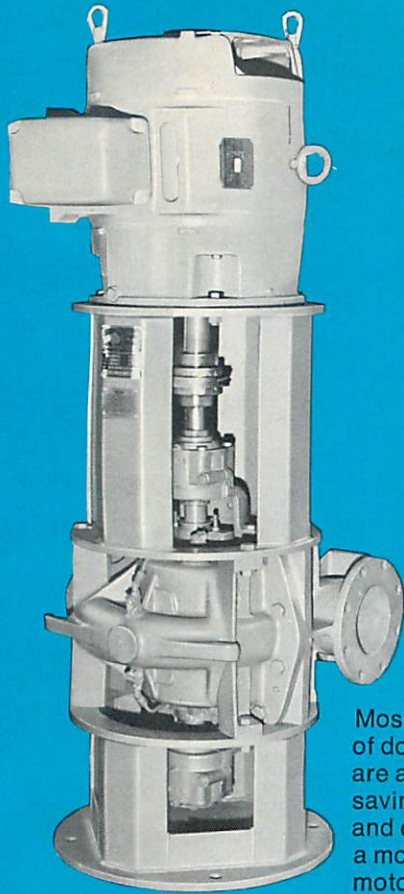
# 1150 rpm composite rating chart



# 1750 rpm composite rating chart

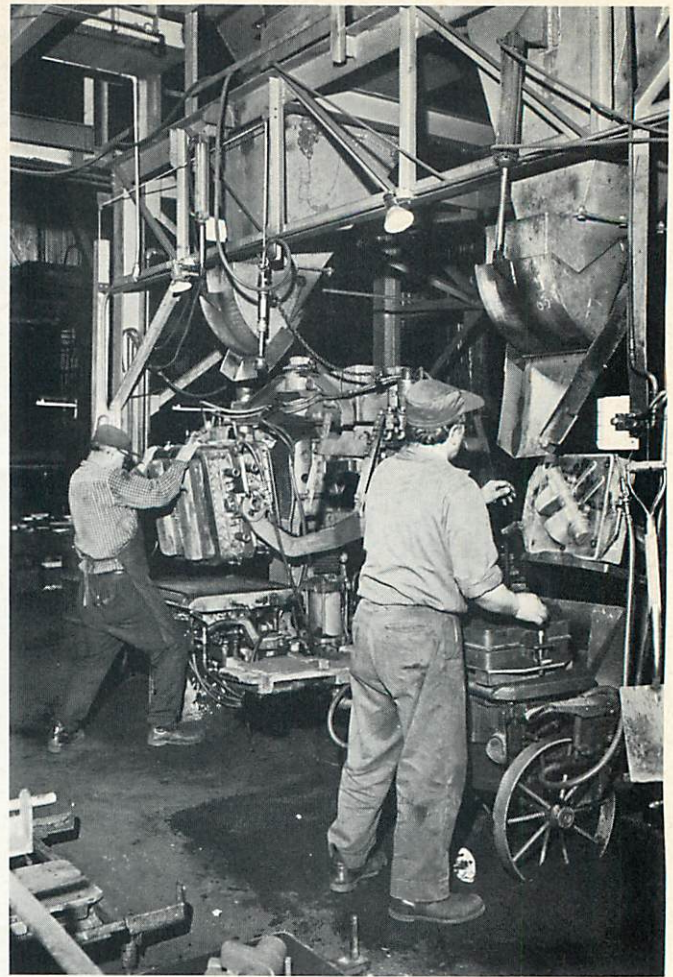




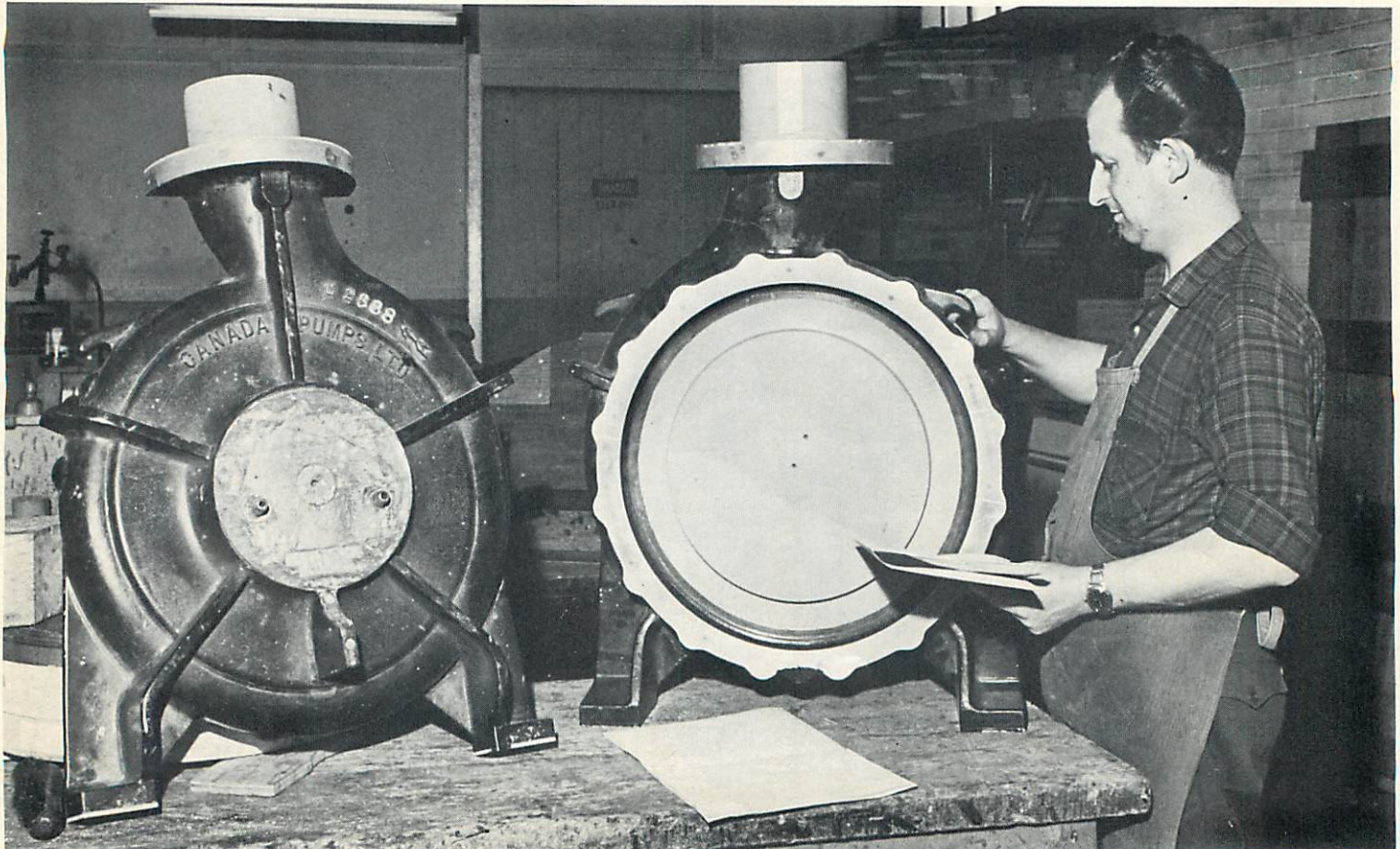


Most sizes and classes of double suction pumps are available in a space-saving vertical arrangement and can be provided with a mounted close-coupled motor (shown on top)

Canada Pumps' experienced patternmakers are kept busy because new pump designs are constantly being conceived. These craftsmen also easily make pattern modifications to create special pump designs



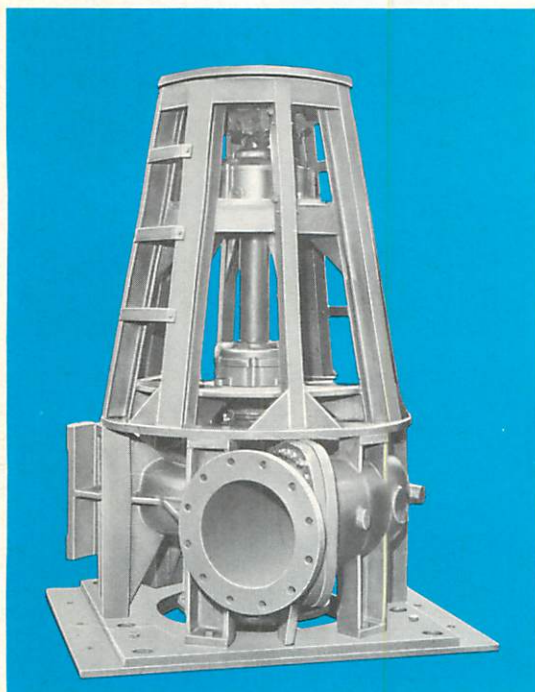
Unlike many pump manufacturers, Canada Pumps has retained its foundry. It has the latest types of equipment and has the abilities to cast Niresist, ductile iron, etc.



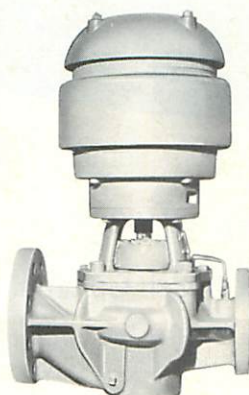




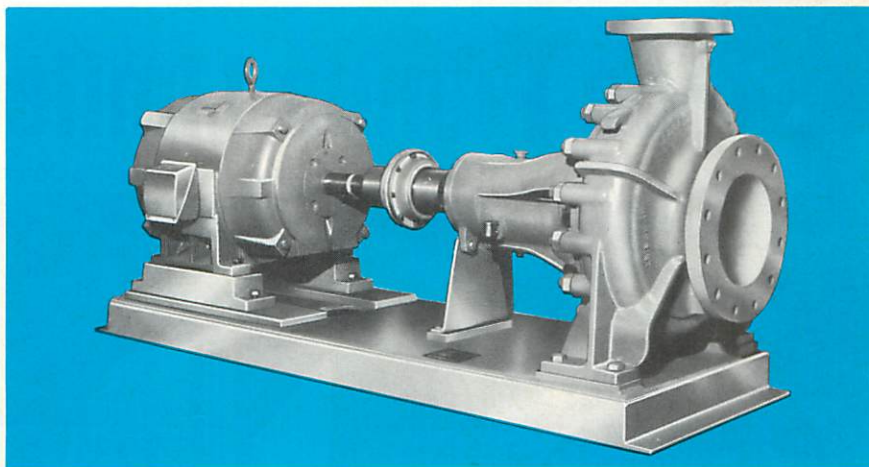
Canada Pumps also manufactures a complete line of single suction pumps for every purpose



Special 10" vertical paper stock pump (face mounted motor not shown)



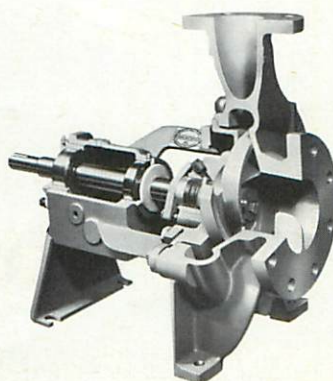
New 'close coupled' in-line single suction pump



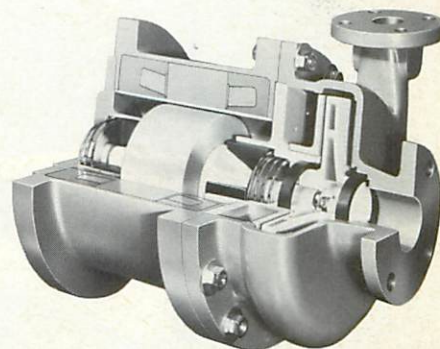
This all-new compact paper stock pump combines an easy maintenance back pull-out feature with the high efficiency and dependability expected from pumps manufactured by Canada Pumps Limited



Sump pumps in duplex unit have float switches shown with special stilling columns and high water alarm



Chem-Rated® pump with exclusive balanced thrust



Can-O-Matic® pump, hermetically sealed and with patented Thrust-O-Matic® motor



# nationwide service

## SAINT JOHN

Keith Brokerage, P.O. Box 512, Saint John, New Brunswick. (506) 693-1215

## MONTREAL

P.O. Box 40, Mount Royal Station, Montreal 304, Quebec. (514) 731-6851

## OTTAWA

77 Metcalfe Street — Suite 702, Ottawa, Ontario. (613) 236-2488

## TORONTO

1560 Bayview Avenue, Toronto 17, Ontario. (416) 483-1186

## HAMILTON

291 Queenston Road, Hamilton 30, Ontario. (416) 547-1929

## KITCHENER

Kitchener, Ontario. (519) 744-8111

## SARNIA

546 North Christina Street, Sarnia, Ontario. (519) 344-1940

## WINNIPEG

Nothart Engineering Sales Ltd., 4 — 193 Bannatyne Avenue, Winnipeg 2, Manitoba. (204) 942-5219

## SASKATOON

Creighton Enterprises Limited, 2510 Jasper Avenue, Saskatoon, Saskatchewan. (306) 653-4211

## EDMONTON

10975 — 124 Street, Edmonton 40, Alberta. (403) 455-1921

## VANCOUVER

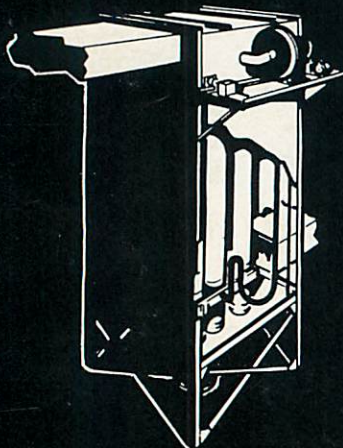
2 — 2455 Cypress Street, Vancouver 9, British Columbia. (604) 731-5808



# Canada Pumps Limited

in association with Canadian Blower & Forge Company, Ltd., Kitchener, Ontario . . . manufacturers of

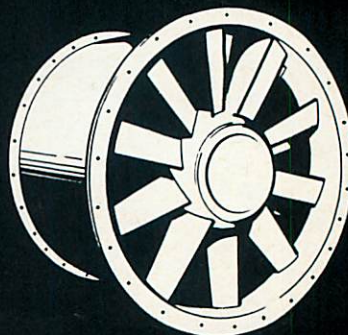
AIR CLEANING



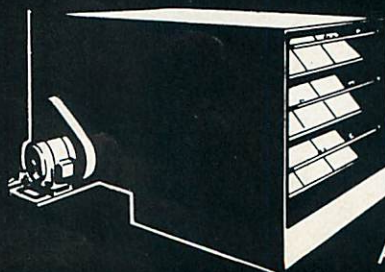
CENTRIFUGAL FANS



AXIAL FLOW FANS



AIR CONDITIONING



AIR WASHERS